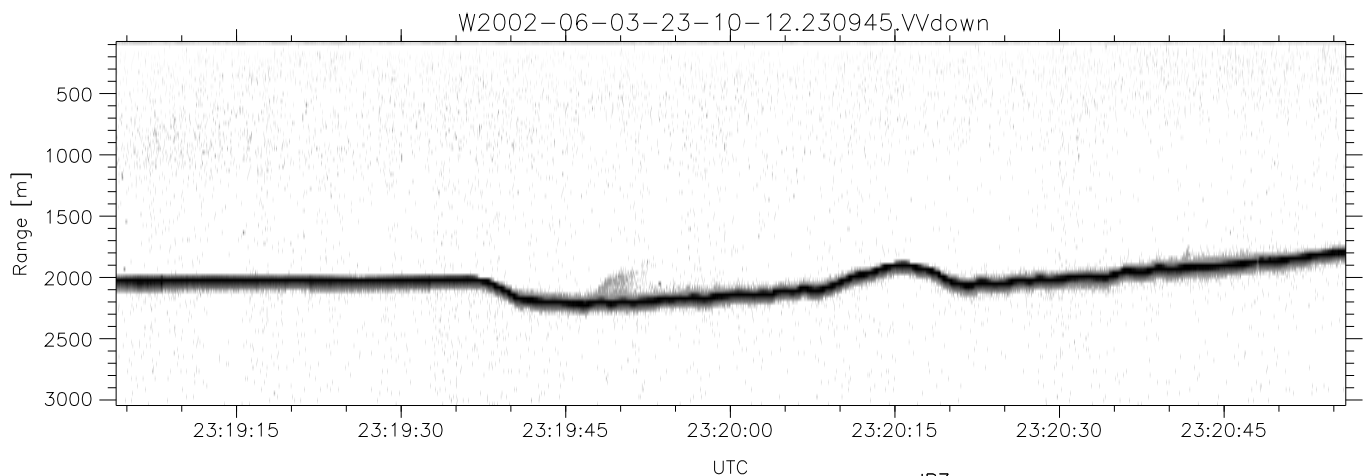
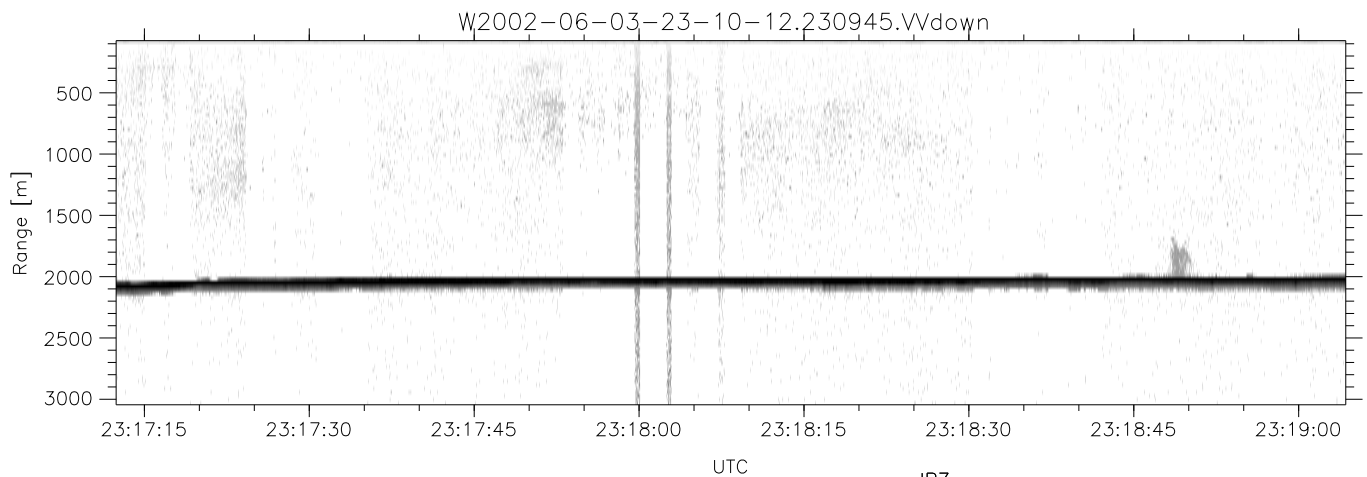
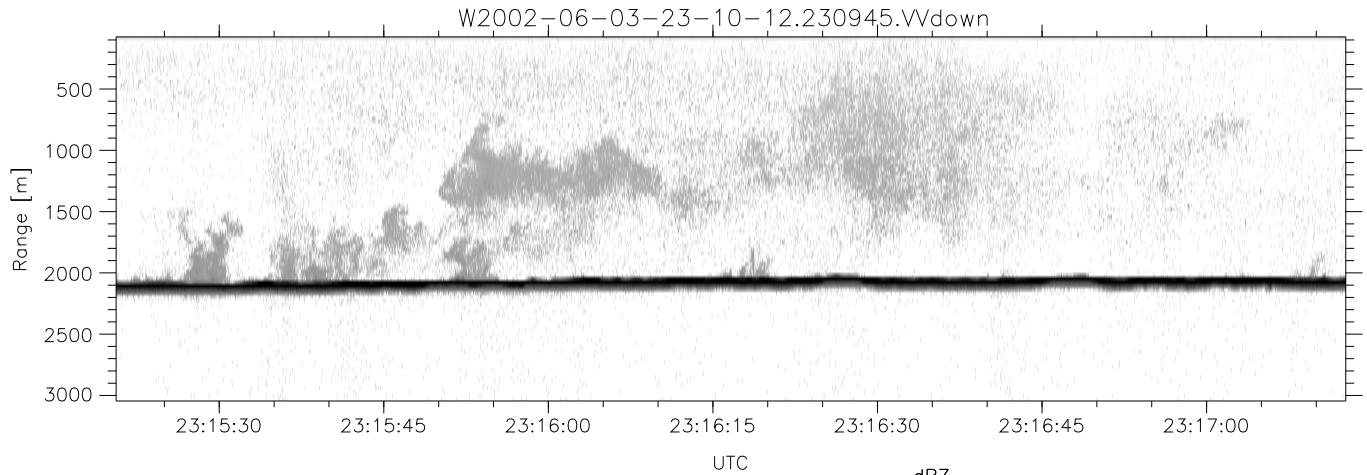


IHOP 2002 (dual-antenna config, modes 1,3,4,7) Data (cal: 55.0,50.0)

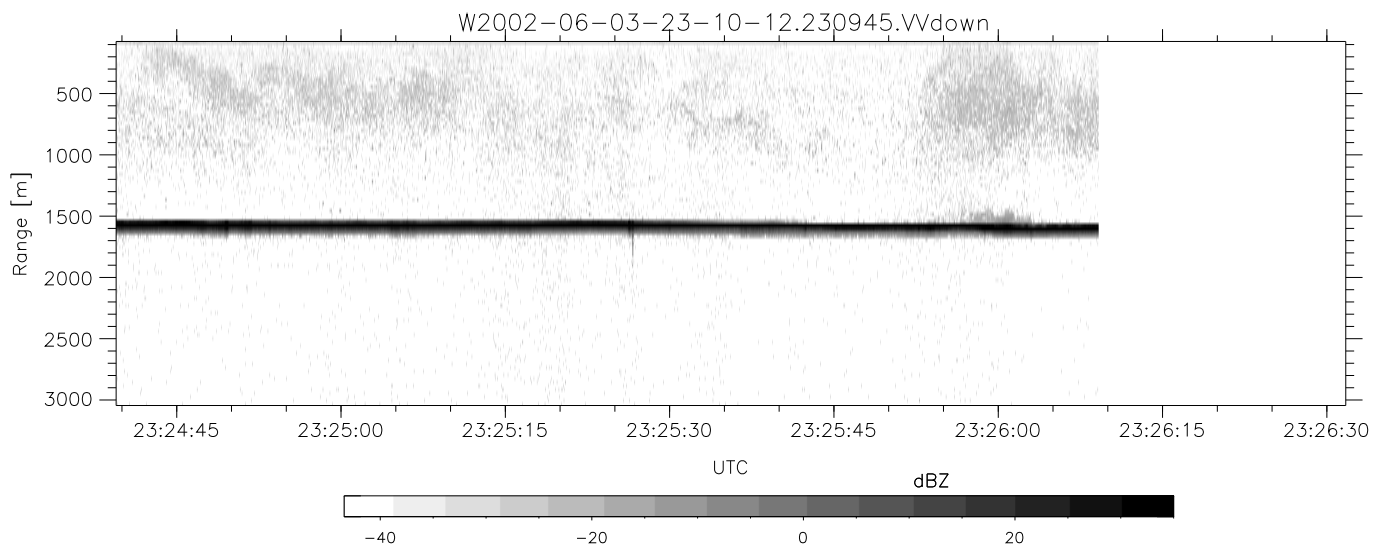
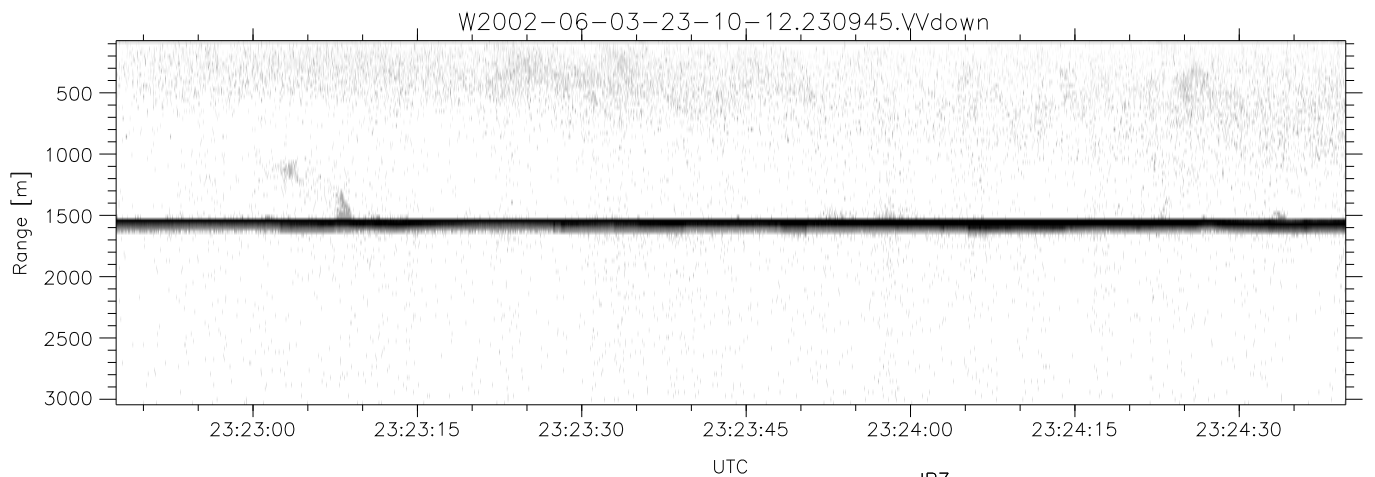
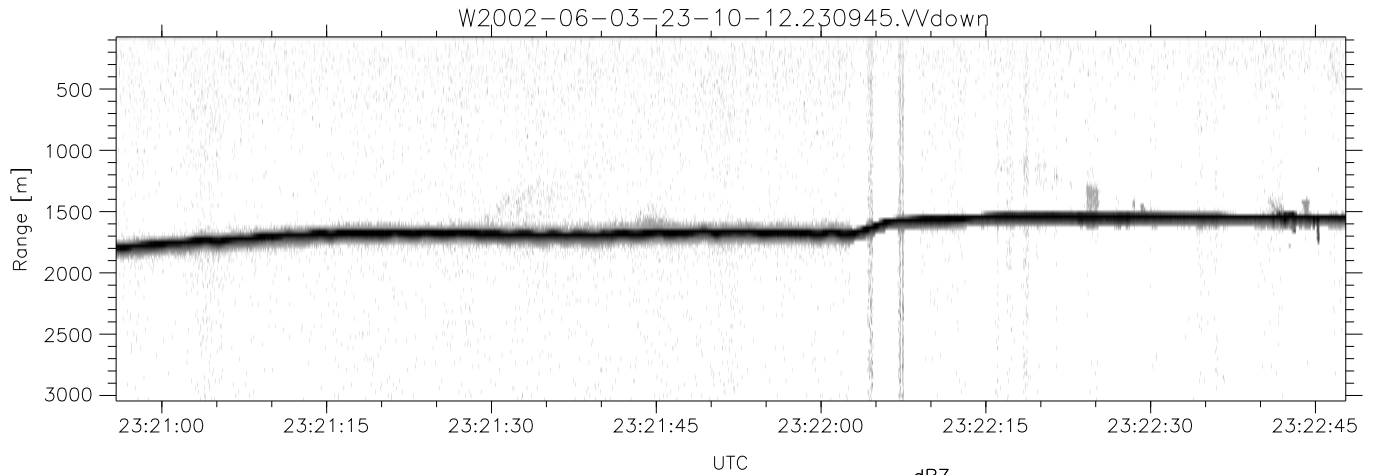
W2002-06-03-23-10-12 - PPMAG4
 IRIG:1,UTC: 23:09:45.56 to 23:46:36.19, Dur: 2211s
 TimeLngth: 2210.63s, TimeInt: 28ms (34.5pps)
 TimeCor=-13.0s, DSPDif(mn,mx,min):28,28,342
 PPS(min,max,std): 24,36,2.20
 Prof: 901 to 77265, NumProf(t/r): 76364/34138
 ProcTime/Recs: 23:09:45-23:26:09/0-34137
 MxACQtime: 33ms; DRate: 193.4KB/s; Flags: 0, 0, 0
 Pulse: 275ns, IFfilt: 5.0MHz; ppPol: HH HV VV
 TxPol: HHVV, PRF: 20 10 20 10 kHz
 Range: Delay 75m, Spacing 30m, Gates 100
 Ave. Pulses: 84, Rng/Prof Aspect@90m/s: 11.5

	Min	Max	Mean	Std	Varc%
hhN(dB)	-67.13	-62.03	-64.73	-73.03	14.8
vvN(dB)	-67.88	-61.99	-65.94	-73.44	17.8
hhL(dB)	-29.36	-10.35	-13.95	-18.66	33.8
vvL(dB)	-32.22	-13.53	-21.23	-23.59	58.0
ppN(m/s)	-12.67	12.64	0.04	4.19	
ppT(m/s)	-100.0	99.84	0.29	33.13	
hh/vv(dB)	-NaN	92.71	-NaN	70.80	-388
vh/hh(dB)	-NaN	-23.33	-47.54	-38.28	844.
hv/vv(dB)	-NaN	-30.52	-53.84	-42.65	1315
hnjmp(dB)	-2.15	2.73	0.17	-8.37	14.0
vnjmp(dB)	-2.51	3.05	0.17	-8.37	14.0



IHOP 2002 (dual-antenna config, modes 1,3,4,7) Data (cal: 55.0,50.0)

W2002-06-03-23-10-12 - PPMAG4	Min	Max	Mean	Std	Varc%
IRIG:1,UTC: 23:09:45.56 to 23:46:36.19, Dur: 2211s	-67.13	-62.03	-64.73	-73.03	14.8
TimeLngth: 2210.63s, TimeInt: 28ms (34.5pps)	-67.88	-61.99	-65.94	-73.44	17.8
TimeCor=-13.0s, DSPDif(mn,mx,min):28,28,342	-29.36	-10.35	-13.95	-18.66	33.8
PPS(min,max,std): 24,36,2.20	-32.22	-13.53	-21.23	-23.59	58.0
Prof: 901 to 77265, NumProf(t/r): 76364/34138	ppN(m/s)	-12.67	12.64	0.04	4.19
ProcTime/Recs: 23:09:45-23:26:09/0-34137	ppT(m/s)	-100.0	99.84	0.29	33.13
MxAcQtime: 33ms; DRate: 193.4KB/s; Flags: 0, 0, 0	hh/vv(dB)	-NaN	92.71	-NaN	70.80 -388
Pulse: 275ns, IFfilt: 5.0MHz; ppPol: HH HV VV	vh/hh(dB)	-NaN	-23.33	-47.54	-38.28 844.
TxPol: HHVV, PRF: 20 10 20 10 kHz	hv/vv(dB)	-NaN	-30.52	-53.84	-42.65 1315
Range: Delay 75m, Spacing 30m, Gates 100	hn/jmp(dB)	-2.15	2.73	0.17	-8.37 14.0
Ave. Pulses: 84, Rng/Prof Aspect@90m/s: 11.5	vn/jmp(dB)	-2.51	3.05	0.17	-8.37 14.0



IHOP 2002 (dual-antenna config, modes 1,3,4,7) Data (cal: 55.0,50.0)

W2002-06-03-23-10-12 - PPMAG4
 IRIG:1,UTC: 23:09:45.56 to 23:46:36.19, Dur: 2211s
 TimeLngth: 2210.63s, TimeInt: 28ms (34.5pps)
 TimeCor=-13.0s, DSPDif(mn,mx,min):28,28,342
 PPS(min,max,std): 24,36,2.20
 Prof: 901 to 77265, NumProf(t/r): 76364/34138
 ProcTime/Recs: 23:09:45-23:26:09/0-34137
 MxACQtime: 33ms; DRate: 193.4KB/s; Flags: 0, 0, 0
 Pulse: 275ns, IFfilt: 5.0MHz; ppPol: HH HV VV
 TxPol: HHVV, PRF: 20 10 20 10 kHz
 Range: Delay 75m, Spacing 30m, Gates 100
 Ave. Pulses: 84, Rng/Prof Aspect@90m/s: 11.5

	Min	Max	Mean	Std	Varc%
hhN(dB)	-67.13	-62.03	-64.73	-73.03	14.8
vvN(dB)	-67.88	-61.99	-65.94	-73.44	17.8
hhL(dB)	-29.36	-10.35	-13.95	-18.66	33.8
vvL(dB)	-32.22	-13.53	-21.23	-23.59	58.0
ppN(m/s)	-12.67	12.64	0.04	4.19	
ppT(m/s)	-100.0	99.84	0.29	33.13	
hh/vv(dB)	-NaN	92.71	-NaN	70.80	-388
vh/hh(dB)	-NaN	-23.33	-47.54	-38.28	844.
hv/vv(dB)	-NaN	-30.52	-53.84	-42.65	1315
hnjmp(dB)	-2.15	2.73	0.17	-8.37	14.0
vnjmp(dB)	-2.51	3.05	0.17	-8.37	14.0