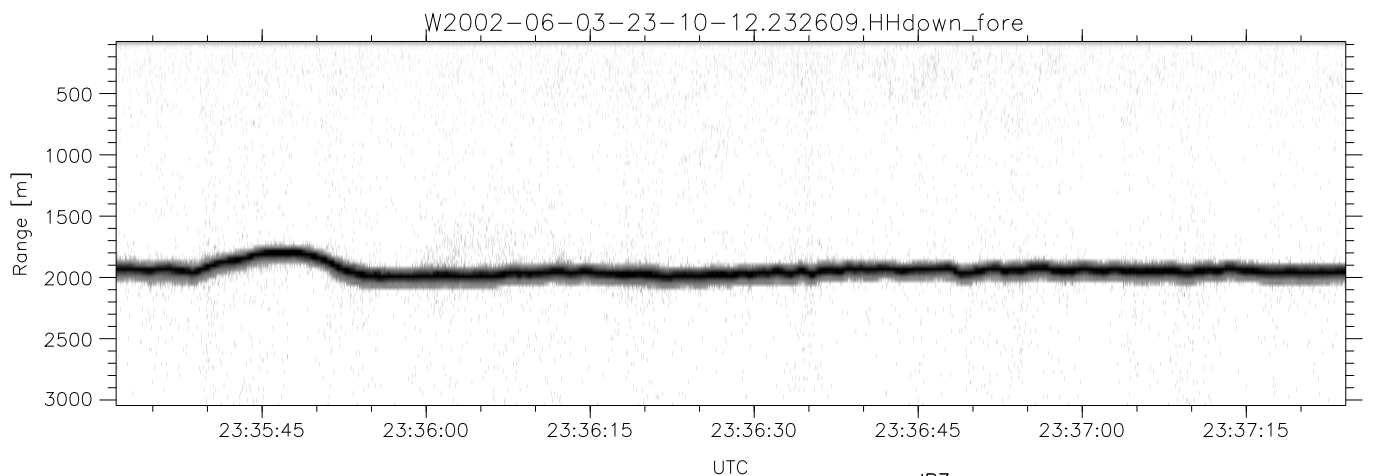
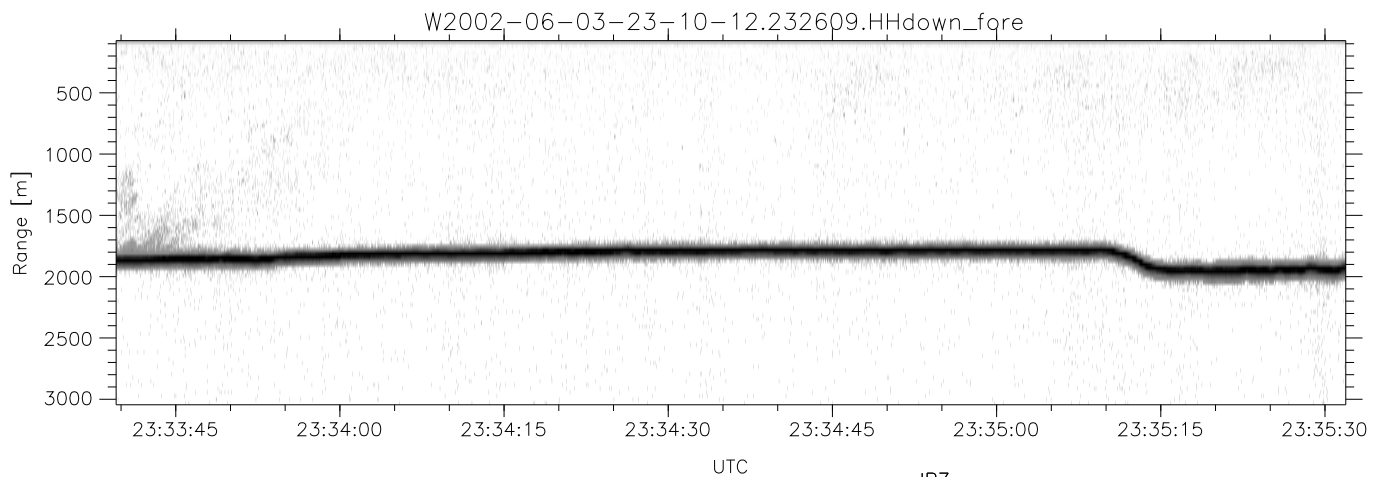
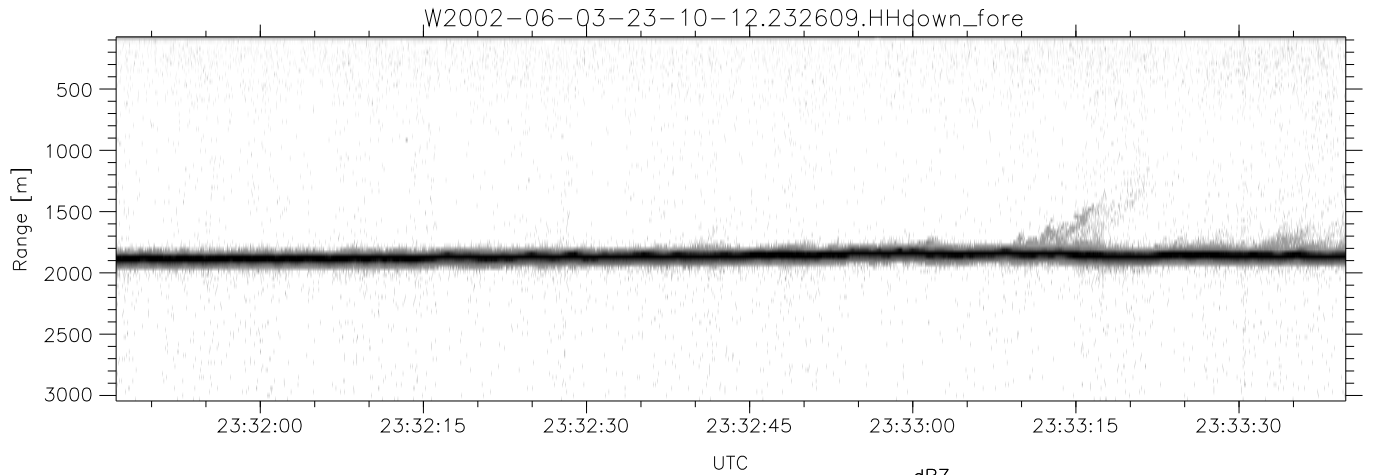


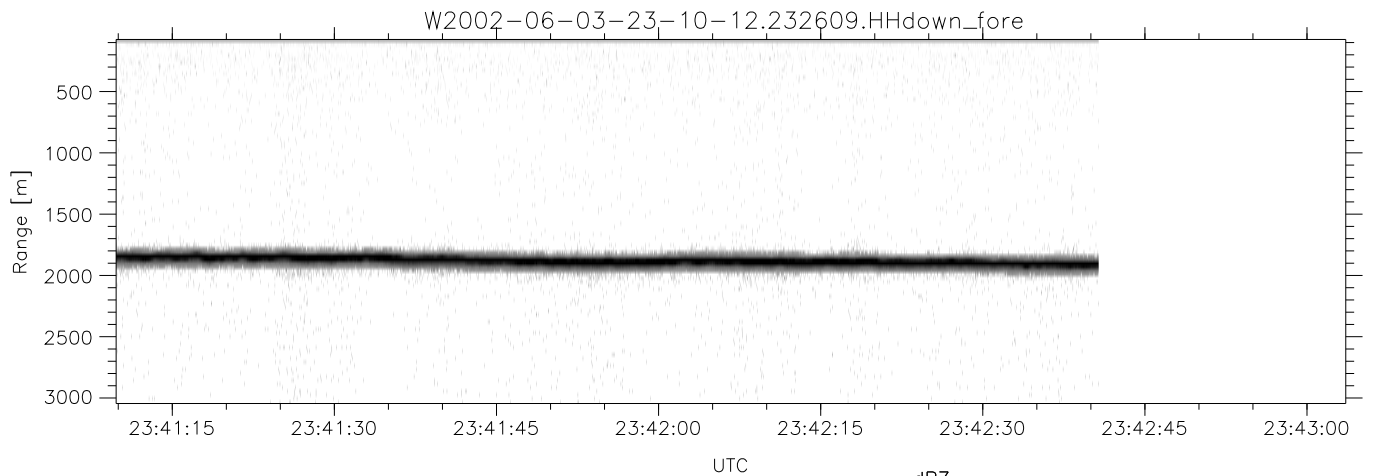
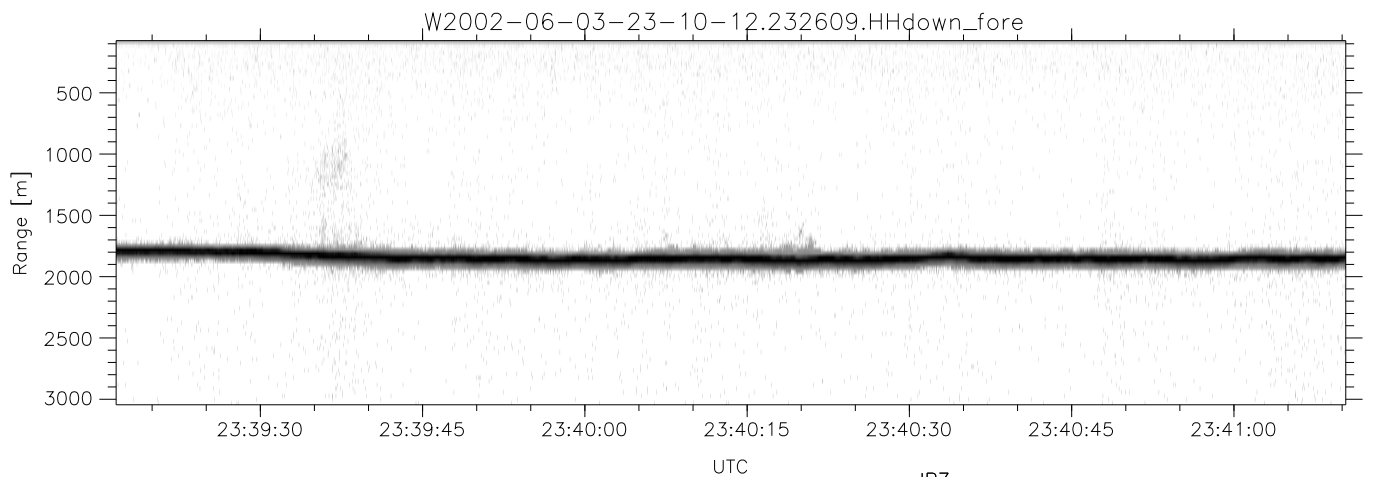
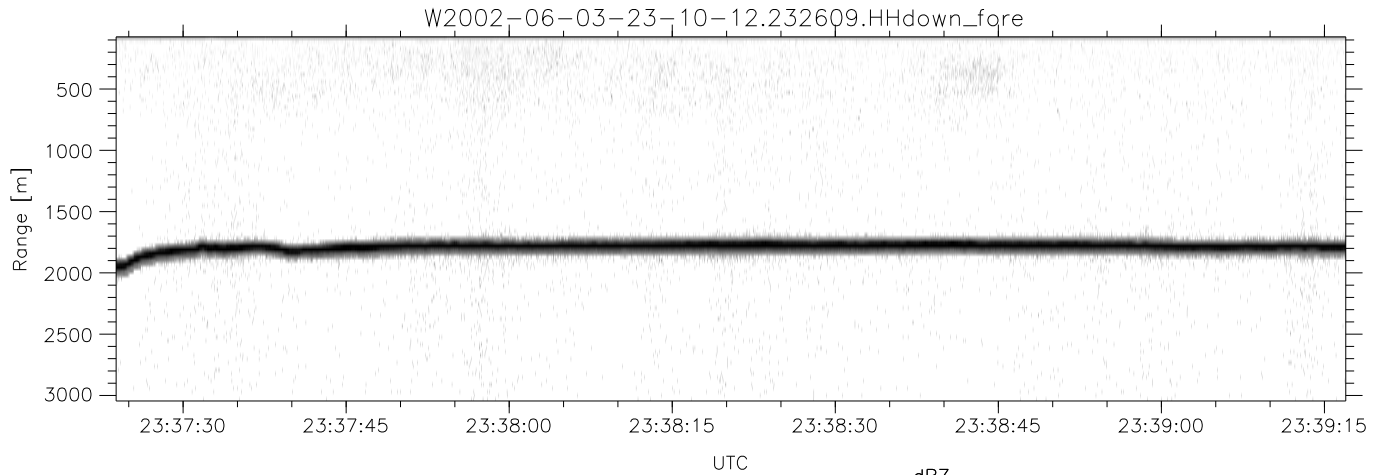
IHOP 2002 (dual-antenna config, modes 1,3,4,7) Data (cal: 55.0,50.0)

	Min	Max	Mean	Std	Varc%
W2002-06-03-23-10-12 - PPMAG4					
IRIG:1,UTC: 23:09:45.56 to 23:46:36.19, Dur: 2211s	hhN (dB)	-66.51 -62.96	-64.66	-74.67	10.0
TimeLngth: 2210.63s, TimeInt: 28ms (34.5pps)	vvN (dB)	-67.93 -64.38	-65.95	-75.95	10.0
TimeCor=-13.0s, DSPDif(mn,mx,min):28,28,362	hhL (dB)	-21.68 -11.07	-12.21	-21.50	11.8
PPS(min,max,std): 24,36,2.23	vvL (dB)	-25.39 -17.20	-21.04	-27.41	23.1
Prof: 901 to 77265, NumProf(t/r): 76364/34138	ppN (m/s)	-12.83 12.43	-0.01	4.17	
ProcTime/Recs: 23:26:09-23:42:40/34138-68275	ppT (m/s)	-101.3 98.18	-0.09	32.95	
MxACQtime: 33ms; DRate: 193.4KB/s; Flags: 0, 0, 0	hh/vv (dB)	-NaN 95.61	-NaN	76.40	-315
Pulse: 275ns, IFfilt: 5.0MHz; ppPol: HH HV VV	vh/hh (dB)	-NaN -30.83	-46.75	-41.77	314.
TxPol: HHVV, PRF: 20 10 20 10 kHz	hv/vv (dB)	-NaN -33.67	-54.49	-45.61	771.
Range: Delay 75m, Spacing 30m, Gates 100	hn_jmp (dB)	-2.23 2.46	0.16	-8.46	13.7
Ave. Pulses: 84, Rng/Prof Aspect@90m/s: 11.5	vn_jmp (dB)	-2.17 2.32	0.16	-8.37	14.0



IHOP 2002 (dual-antenna config, modes 1,3,4,7) Data (cal: 55.0,50.0)

W2002-06-03-23-10-12 - PPMAG4	Min	Max	Mean	Std	Varc%
IRIG:1,UTC: 23:09:45.56 to 23:46:36.19, Dur: 2211s	-66.51	-62.96	-64.66	-74.67	10.0
TimeLngth: 2210.63s, TimeInt: 28ms (34.5pps)	-67.93	-64.38	-65.95	-75.95	10.0
TimeCor=-13.0s, DSPDif(mn,mx,min):28,28,362	-21.68	-11.07	-12.21	-21.50	11.8
PPS(min,max,std): 24,36,2.23	-25.39	-17.20	-21.04	-27.41	23.1
Prof: 901 to 77265, NumProf(t/r): 76364/34138	ppN(m/s)	-12.83	12.43	-0.01	4.17
ProcTime/Recs: 23:26:09-23:42:40/34138-68275	ppT(m/s)	-101.3	98.18	-0.09	32.95
MxAcQtime: 33ms; DRate: 193.4KB/s; Flags: 0, 0, 0	hh/vv(dB)	-NaN	95.61	-NaN	76.40 -315
Pulse: 275ns, IFilt: 5.0MHz; ppPol: HH HV VV	vh/hh(dB)	-NaN	-30.83	-46.75	-41.77 314.
TxPol: HHVV, PRF: 20 10 20 10 kHz	hv/vv(dB)	-NaN	-33.67	-54.49	-45.61 771.
Range: Delay 75m, Spacing 30m, Gates 100	hnjmp(dB)	-2.23	2.46	0.16	-8.46 13.7
Ave. Pulses: 84, Rng/Prof Aspect@90m/s: 11.5	vnjmp(dB)	-2.17	2.32	0.16	-8.37 14.0



IHOP 2002 (dual-antenna config, modes 1,3,4,7) Data (cal: 55.0,50.0)

W2002-06-03-23-10-12 - PPMAG4	Min	Max	Mean	Std	Varc%	
IRIG:1,UTC: 23:09:45.56 to 23:46:36.19, Dur: 2211s	hhN (dB)	-66.51	-62.96	-64.66	-74.67	10.0
TimeLngth: 2210.63s, TimeInt: 28ms (34.5pps)	vvN (dB)	-67.93	-64.38	-65.95	-75.95	10.0
TimeCor=-13.0s, DSPDif(mn,mx,min):28,28,362	hhL (dB)	-21.68	-11.07	-12.21	-21.50	11.8
PPS(min,max,std): 24,36,2.23	vvL (dB)	-25.39	-17.20	-21.04	-27.41	23.1
Prof: 901 to 77265, NumProf(t/r): 76364/34138	ppN (m/s)	-12.83	12.43	-0.01	4.17	
ProcTime/Recs: 23:26:09-23:42:40/34138-68275	ppT (m/s)	-101.3	98.18	-0.09	32.95	
MxACQtime: 33ms; DRate: 193.4KB/s; Flags: 0, 0, 0	hh/vv (dB)	-NaN	95.61	-NaN	76.40	-315
Pulse: 275ns, IFfilt: 5.0MHz; ppPol: HH HV VV	vh/hh (dB)	-NaN	-30.83	-46.75	-41.77	314.
TxPol: HHVV, PRF: 20 10 20 10 kHz	hv/vv (dB)	-NaN	-33.67	-54.49	-45.61	771.
Range: Delay 75m, Spacing 30m, Gates 100	hnjmp (dB)	-2.23	2.46	0.16	-8.46	13.7
Ave. Pulses: 84, Rng/Prof Aspect@90m/s: 11.5	vnjmp (dB)	-2.17	2.32	0.16	-8.37	14.0