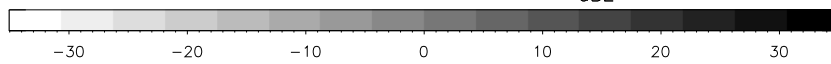
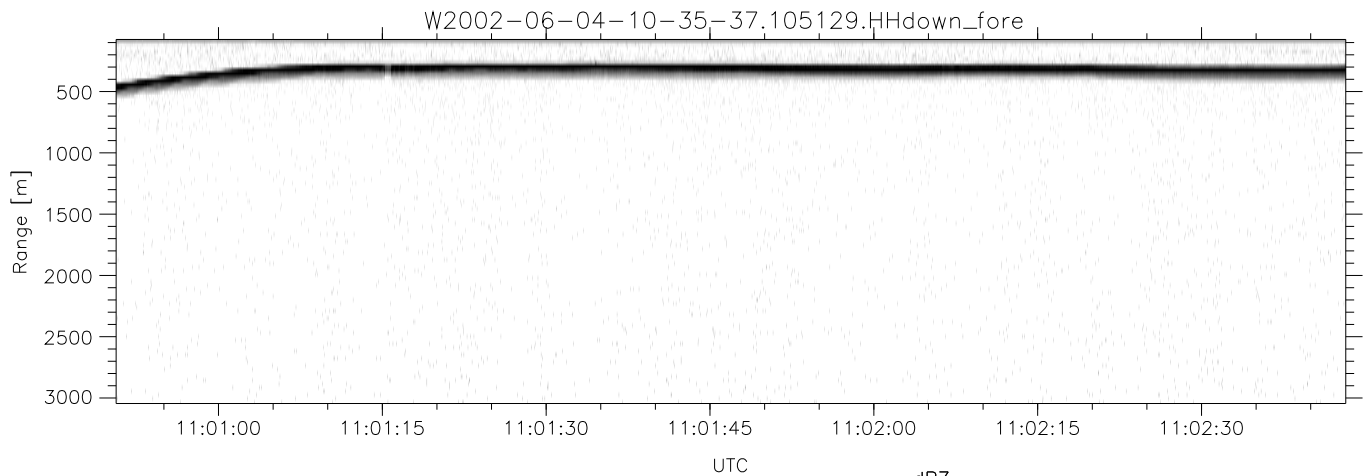
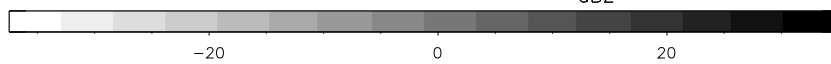
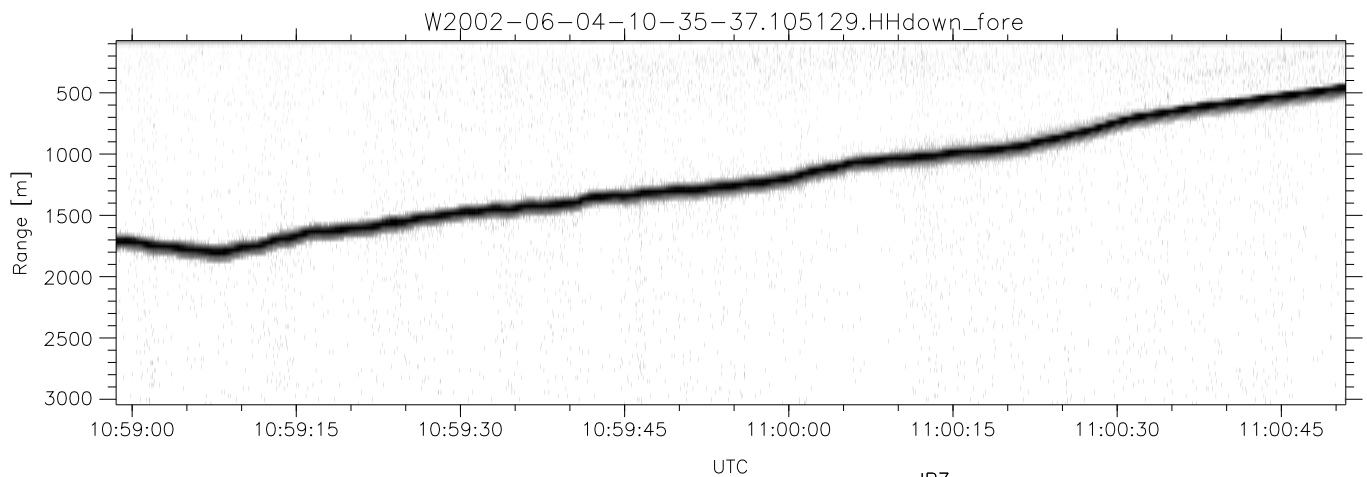
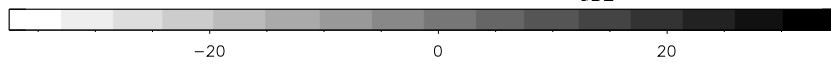
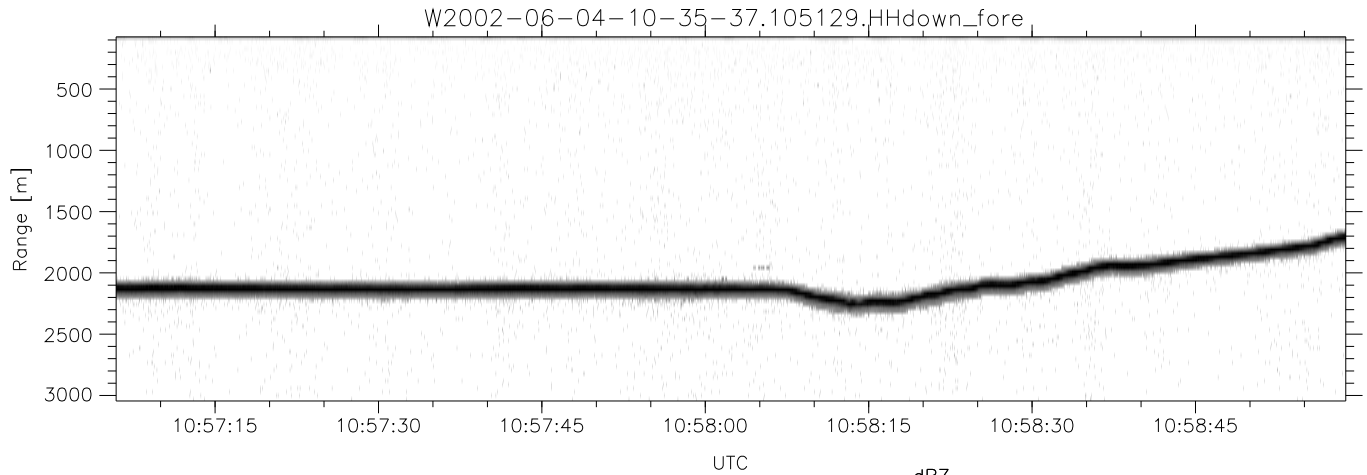


IHOP 2002 (dual-antenna config, modes 1,3,4,7) Data (cal: 55.0,50.0)

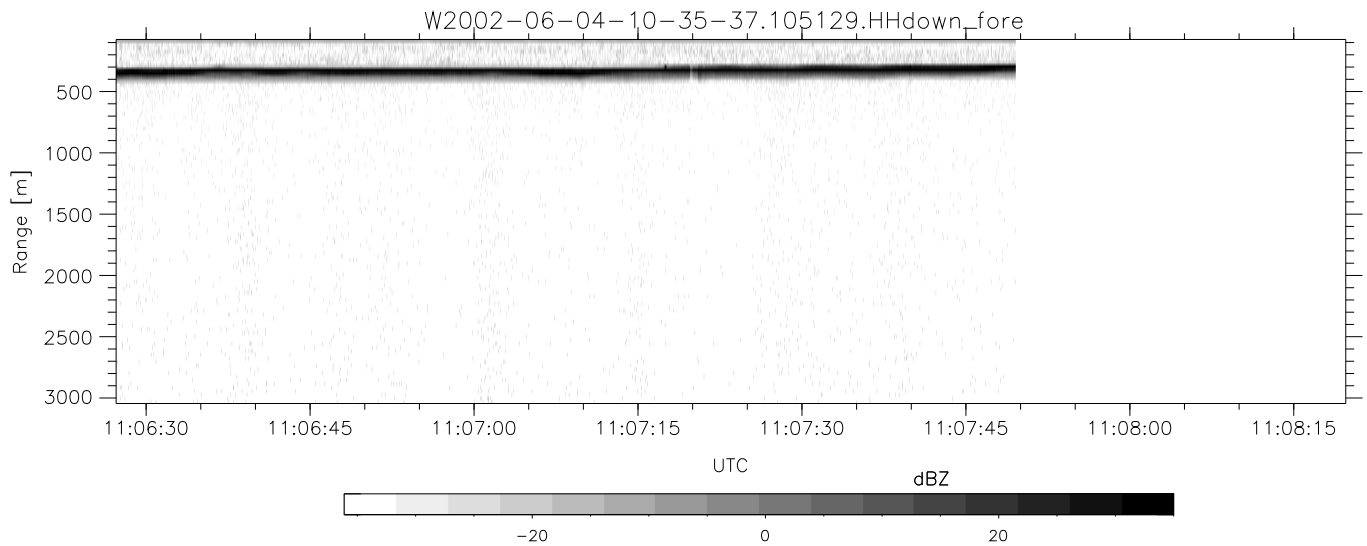
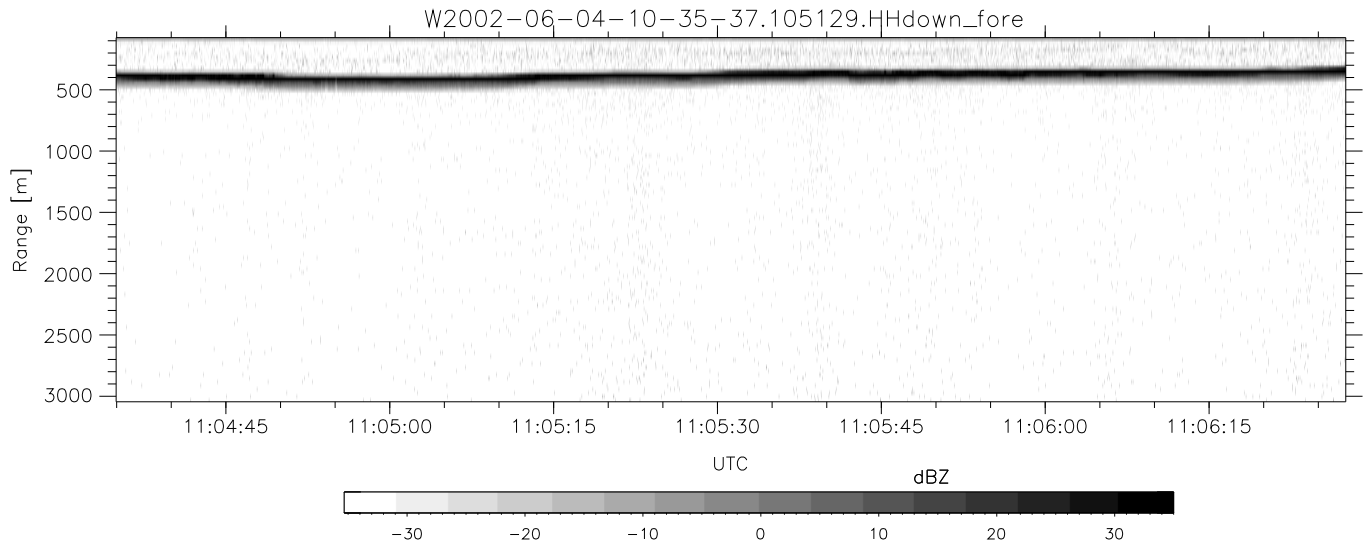
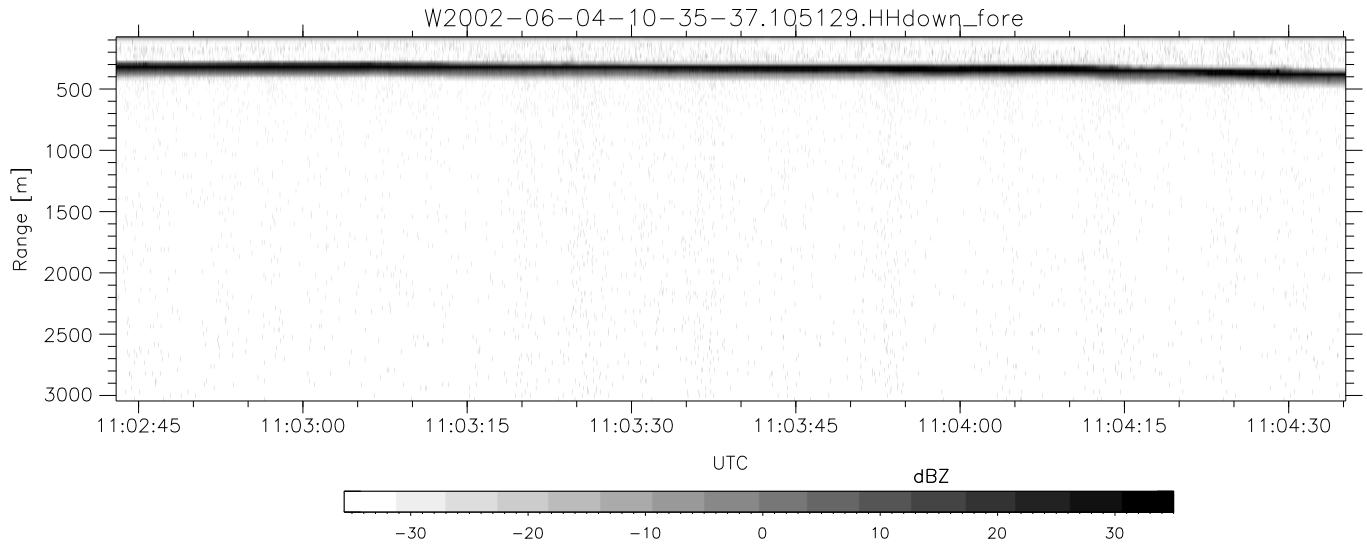
W2002-06-04-10-35-37 - PPMAG4	Min	Max	Mean	Std	Varc%	
IRIG:1,UTC: 10:35:10.27 to 11:37:50.81, Dur: 3760s	hhN(dB)	-67.05	-63.60	-65.18	-75.16	10.0
TimeLngth: 3760.54s, TimeInt: 28ms (34.8pps)	vvN(dB)	-67.65	-64.18	-65.88	-75.90	10.0
TimeCor=-13.0s, DSPDif(mn,min,mx):28,28,316	hhL(dB)	-29.16	-4.42	-9.91	-10.34	90.5
PPS(min,max,std): 25,36,2.15	vvL(dB)	-25.28	-9.61	-17.52	-17.39	102.
Prof: 944 to 131854, NumProf(t/r): 130910/34138	ppN(m/s)	-12.33	12.87	-0.00	4.12	
ProcTime/Recs: 10:51:29-11:07:49/34138-68275	ppT(m/s)	-97.39	101.70	-0.02	32.55	
MxAcQtime: 33ms; DRate: 194.9KB/s; Flags: 0, 0, 0	hh/vv(dB)	-NaN	87.38	41.60	64.34	1879
Pulse: 275ns, IFfilt: 5.0MHz; ppPol: HH HV VV	vh/hh(dB)	-NaN	4.60	-29.33	-16.68	1840
TxPol: HHVV, PRF: 20 10 20 10 kHz	hv/vv(dB)	-NaN	-17.48	-37.83	-32.21	364.
Range: Delay 75m, Spacing 30m, Gates 100	hnjmp(dB)	-2.47	2.16	-0.07	-8.69	13.7
Ave. Pulses: 84, Rng/Prof Aspect@90m/s: 11.6	vnjmp(dB)	-2.44	2.47	-0.07	-8.58	14.1



IHOP 2002 (dual-antenna config, modes 1,3,4,7) Data (cal: 55.0,50.0)

W2002-06-04-10-35-37 - PPMAG4
 IRIG:1,UTC: 10:35:10.27 to 11:37:50.81, Dur: 3760s
 TimeLngth: 3760.54s, TimeInt: 28ms (34.8pps)
 TimeCor=-13.0s, DSPDif(mn,min,mx):28,28,316
 PPS(min,max,std): 25,36,2.15
 Prof: 944 to 131854, NumProf(t/r): 130910/34138
 ProcTime/Recs: 10:51:29-11:07:49/34138-68275
 MxACQtime: 33ms; DRate: 194.9KB/s; Flags: 0, 0, 0
 Pulse: 275ns, IFfilt: 5.0MHz; ppPol: HH HV VV
 TxPol: HHVV, PRF: 20 10 20 10 kHz
 Range: Delay 75m, Spacing 30m, Gates 100
 Ave. Pulses: 84, Rng/Prof Aspect@90m/s: 11.6

	Min	Max	Mean	Std	Varc%
hhN(dB)	-67.05	-63.60	-65.18	-75.16	10.0
vvN(dB)	-67.65	-64.18	-65.88	-75.90	10.0
hhL(dB)	-29.16	-4.42	-9.91	-10.34	90.5
vvL(dB)	-25.28	-9.61	-17.52	-17.39	102.
ppN(m/s)	-12.33	12.87	-0.00	4.12	
ppT(m/s)	-97.39	101.70	-0.02	32.55	
hh/vv(dB)	-NaN	87.38	41.60	64.34	1879
vh/hh(dB)	-NaN	4.60	-29.33	-16.68	1840
hv/vv(dB)	-NaN	-17.48	-37.83	-32.21	364.
hnjmp(dB)	-2.47	2.16	-0.07	-8.69	13.7
vnjmp(dB)	-2.44	2.47	-0.07	-8.58	14.1



IHOP 2002 (dual-antenna config, modes 1,3,4,7) Data (cal: 55.0,50.0)

W2002-06-04-10-35-37 - PPMAG4
 IRIG:1,UTC: 10:35:10.27 to 11:37:50.81, Dur: 3760s
 TimeLngth: 3760.54s, TimeInt: 28ms (34.8pps)
 TimeCor=-13.0s, DSPDif(mn,min,mx):28,28,316
 PPS(min,max,std): 25,36,2.15
 Prof: 944 to 131854, NumProf(t/r): 130910/34138
 ProcTime/Recs: 10:51:29-11:07:49/34138-68275
 MxACQtime: 33ms; DRate: 194.9KB/s; Flags: 0, 0, 0
 Pulse: 275ns, IFilt: 5.0MHz; ppPol: HH HV VV
 TxPol: HHVV, PRF: 20 10 20 10 kHz
 Range: Delay 75m, Spacing 30m, Gates 100
 Ave. Pulses: 84, Rng/Prof Aspect@90m/s: 11.6

	Min	Max	Mean	Std	Varc%
hhN(dB)	-67.05	-63.60	-65.18	-75.16	10.0
vvN(dB)	-67.65	-64.18	-65.88	-75.90	10.0
hhL(dB)	-29.16	-4.42	-9.91	-10.34	90.5
vvL(dB)	-25.28	-9.61	-17.52	-17.39	102.
ppN(m/s)	-12.33	12.87	-0.00	4.12	
ppT(m/s)	-97.39	101.70	-0.02	32.55	
hh/vv(dB)	-NaN	87.38	41.60	64.34	1879
vh/hh(dB)	-NaN	4.60	-29.33	-16.68	1840
hv/vv(dB)	-NaN	-17.48	-37.83	-32.21	364.
hnjmp(dB)	-2.47	2.16	-0.07	-8.69	13.7
vnjmp(dB)	-2.44	2.47	-0.07	-8.58	14.1