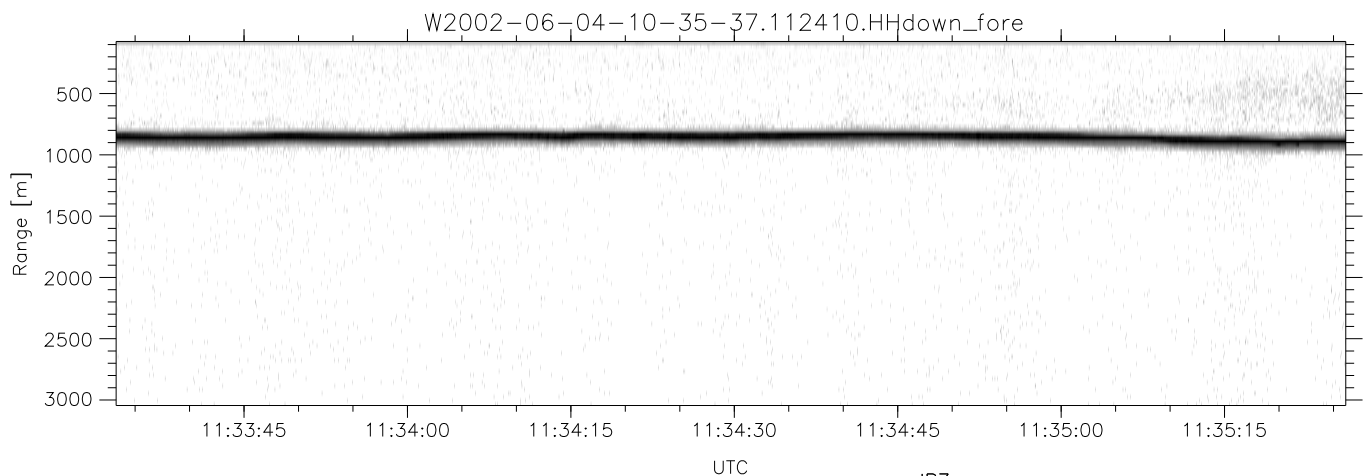
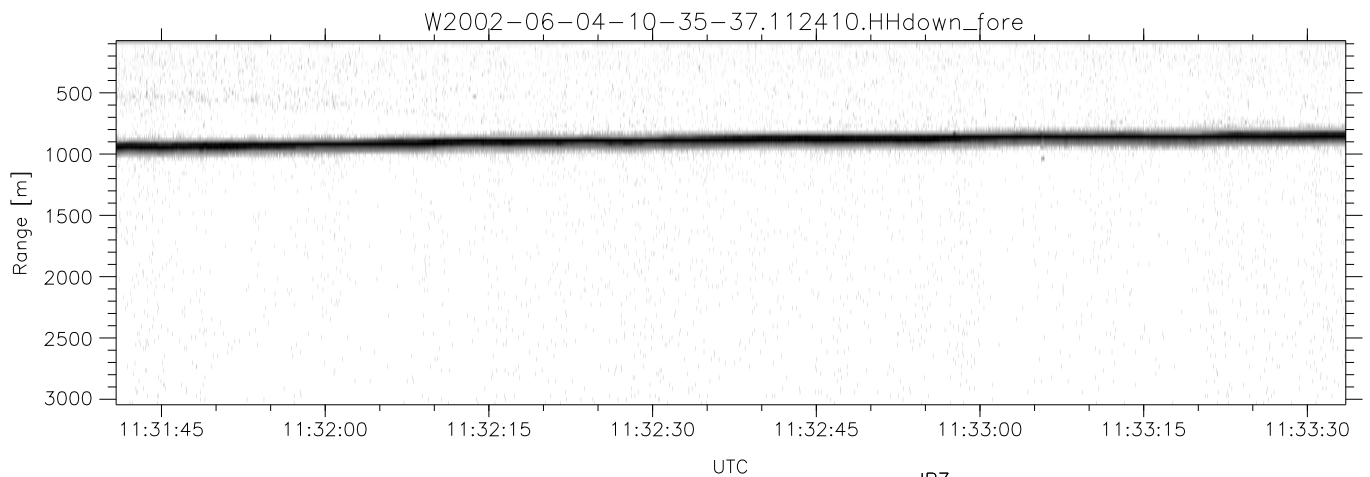
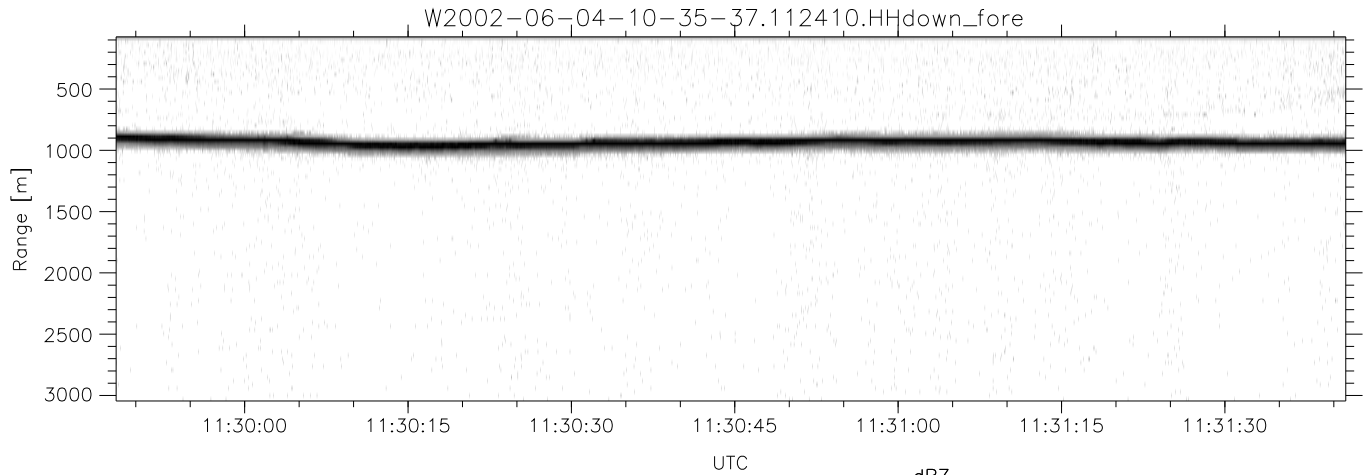


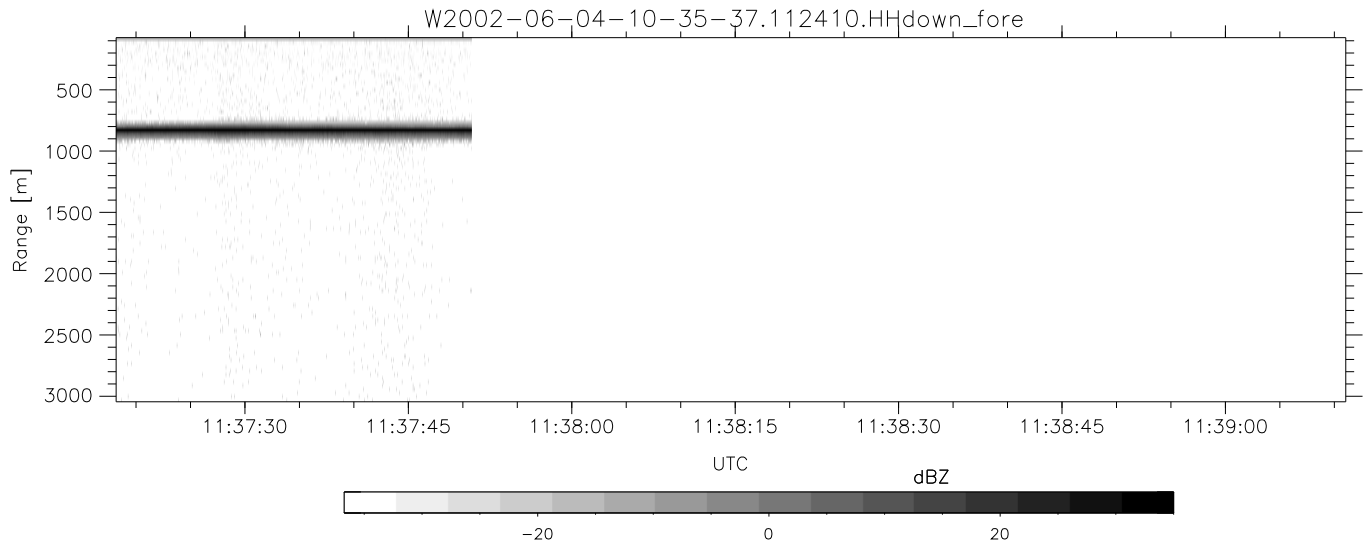
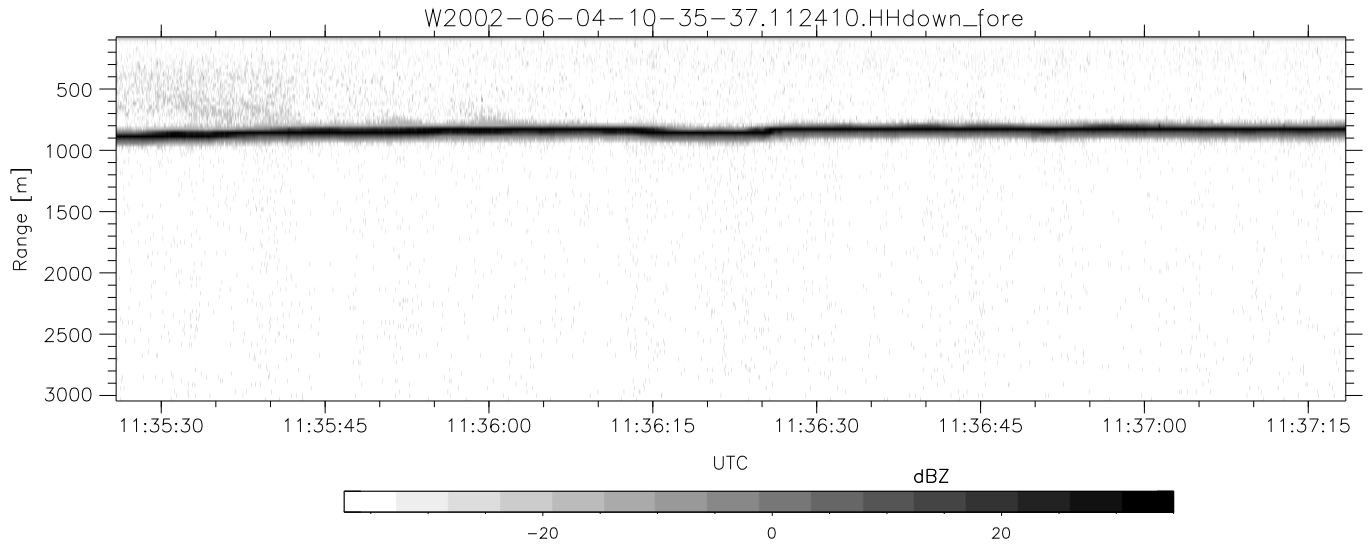
IHOP 2002 (dual-antenna config, modes 1,3,4,7) Data (cal: 55.0,50.0)

W2002-06-04-10-35-37 - PPMAG4	Min	Max	Mean	Std	Varc%	
IRIG:1,UTC: 10:35:10.27 to 11:37:50.81, Dur: 3760s	hhN(dB)	-67.27	-63.77	-65.27	-75.30	9.9
TimeLngth: 3760.54s, TimeInt: 28ms (34.8pps)	vvN(dB)	-67.83	-64.45	-65.94	-75.99	9.9
TimeCor=-13.0s, DSPDif(mn,min,mx):28,28,341	hhL(dB)	-16.62	-8.91	-12.18	-19.31	19.4
PPS(min,max,std): 24,36,2.17	vvL(dB)	-20.84	-11.82	-16.22	-19.64	45.5
Prof: 944 to 131854, NumProf(t/r): 130910/28496	ppN(m/s)	-12.67	12.77	-0.00	4.15	
ProcTime/Recs: 11:24:10-11:37:50/102414-130909	ppT(m/s)	-100.0	100.87	-0.01	32.77	
MxACQtime: 33ms; DRate: 194.9KB/s; Flags: 0, 0, 0	hh/vv(dB)	-NaN	93.90	49.60	74.39	3016
Pulse: 275ns, IFilt: 5.0MHz; ppPol: HH HV VV	vh/hh(dB)	-NaN	-29.85	-45.01	-40.67	271.
TxPol: HHVV, PRF: 20 10 20 10 kHz	hv/vv(dB)	-NaN	-24.64	-48.61	-43.61	316.
Range: Delay 75m, Spacing 30m, Gates 100	hn_jmp(dB)	-2.41	2.15	-0.08	-8.69	13.8
Ave. Pulses: 84, Rng/Prof Aspect@90m/s: 11.6	vn_jmp(dB)	-2.65	2.28	-0.07	-8.64	13.9



IHOP 2002 (dual-antenna config, modes 1,3,4,7) Data (cal: 55.0,50.0)

W2002-06-04-10-35-37 - PPMAG4	Min	Max	Mean	Std	Varc%	
IRIG:1,UTC: 10:35:10.27 to 11:37:50.81, Dur: 3760s	hhN(dB)	-67.27	-63.77	-65.27	-75.30	9.9
TimeLngth: 3760.54s, TimeInt: 28ms (34.8pps)	vvN(dB)	-67.83	-64.45	-65.94	-75.99	9.9
TimeCor=-13.0s, DSPDif(mn,min,mx):28,28,341	hhL(dB)	-16.62	-8.91	-12.18	-19.31	19.4
PPS(min,max,std): 24,36,2.17	vvL(dB)	-20.84	-11.82	-16.22	-19.64	45.5
Prof: 944 to 131854, NumProf(t/r): 130910/28496	ppN(m/s)	-12.67	12.77	-0.00	4.15	
ProcTime/Recs: 11:24:10-11:37:50/102414-130909	ppT(m/s)	-100.0	100.87	-0.01	32.77	
MxAcQtime: 33ms; DRate: 194.9KB/s; Flags: 0, 0, 0	hh/vv(dB)	-NaN	93.90	49.60	74.39	3016
Pulse: 275ns, IFilt: 5.0MHz; ppPol: HH HV VV	vh/hh(dB)	-NaN	-29.85	-45.01	-40.67	271.
TxPol: HHVV, PRF: 20 10 20 10 kHz	hv/vv(dB)	-NaN	-24.64	-48.61	-43.61	316.
Range: Delay 75m, Spacing 30m, Gates 100	hn_jmp(dB)	-2.41	2.15	-0.08	-8.69	13.8
Ave. Pulses: 84, Rng/Prof Aspect@90m/s: 11.6	vn_jmp(dB)	-2.65	2.28	-0.07	-8.64	13.9



IHOP 2002 (dual-antenna config, modes 1,3,4,7) Data (cal: 55.0,50.0)

W2002-06-04-10-35-37 - PPMAG4						
IRIG:1,UTC: 10:35:10.27 to 11:37:50.81, Dur: 3760s	hhN (dB)	Min	Max	Mean	Std	Varc%
TimeLngth: 3760.54s, TimeInt: 28ms (34.8pps)	vvN (dB)	-67.83	-64.45	-65.94	-75.99	9.9
TimeCor=-13.0s, DSPDif(mn,min,mx):28,28,341	hhL (dB)	-16.62	-8.91	-12.18	-19.31	19.4
PPS(min,max,std): 24,36,2.17	vvL (dB)	-20.84	-11.82	-16.22	-19.64	45.5
Prof: 944 to 131854, NumProf(t/r): 130910/28496	ppN (m/s)	-12.67	12.77	-0.00	4.15	
ProcTime/Recs: 11:24:10-11:37:50/102414-130909	ppT (m/s)	-100.0	100.87	-0.01	32.77	
MxACQtime: 33ms; DRate: 194.9KB/s; Flags: 0, 0, 0	hh/vv (dB)	-NaN	93.90	49.60	74.39	3016
Pulse: 275ns, IFfilt: 5.0MHz; ppPol: HH HV VV	vh/hh (dB)	-NaN	-29.85	-45.01	-40.67	271.
TxPol: HHVV, PRF: 20 10 20 10 kHz	hv/vv (dB)	-NaN	-24.64	-48.61	-43.61	316.
Range: Delay 75m, Spacing 30m, Gates 100	hnjmp (dB)	-2.41	2.15	-0.08	-8.69	13.8
Ave. Pulses: 84, Rng/Prof Aspect@90m/s: 11.6	vnjmp (dB)	-2.65	2.28	-0.07	-8.64	13.9