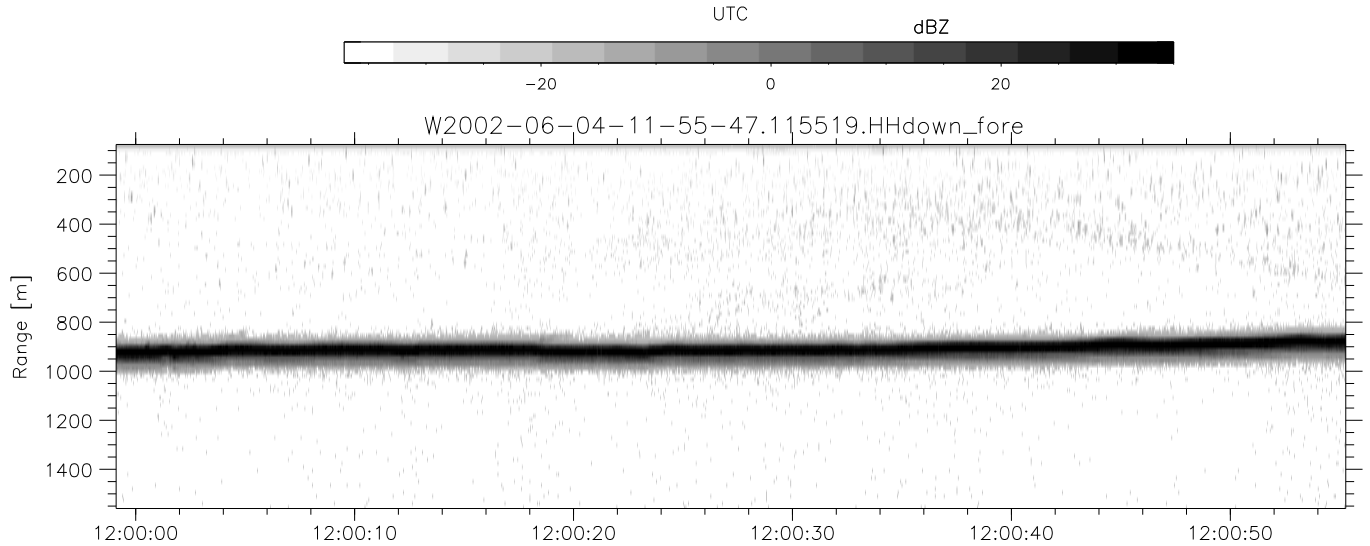
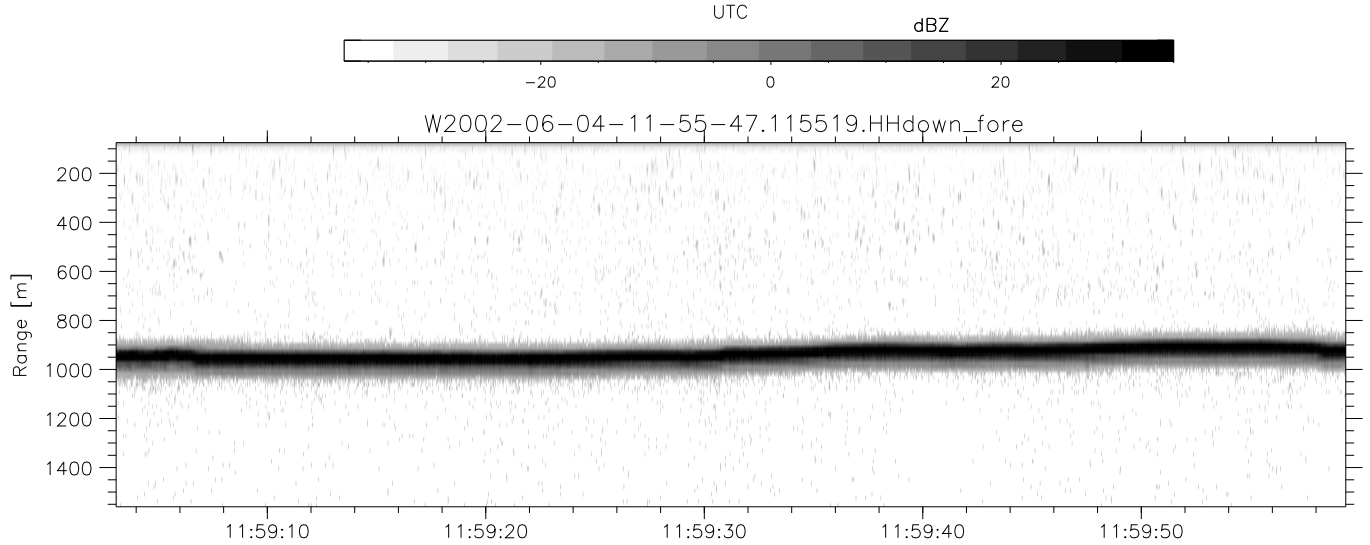
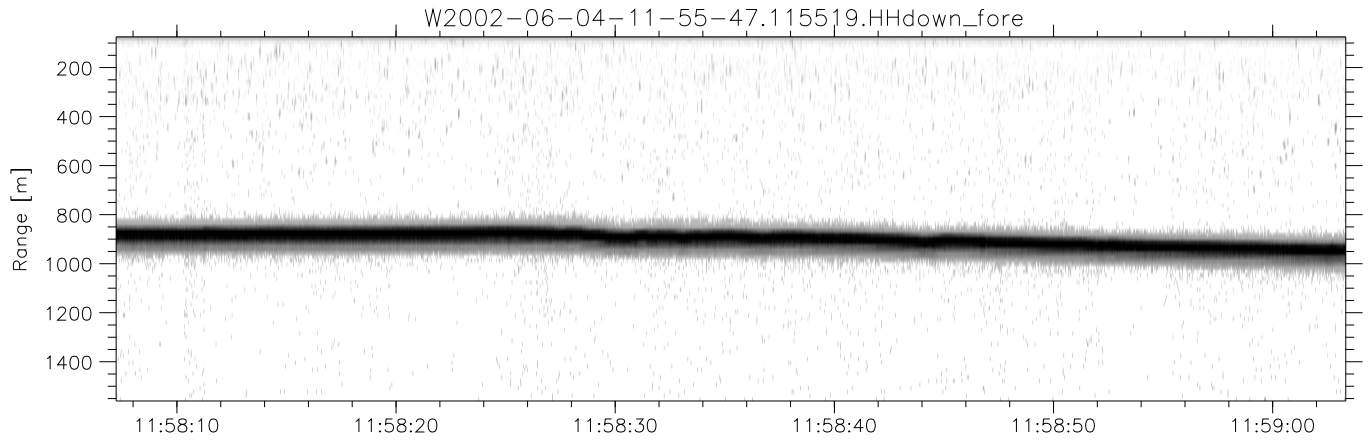


IHOP 2002 (dual-antenna config, modes 1,3,4,7) Data (cal: 55.0,50.0)

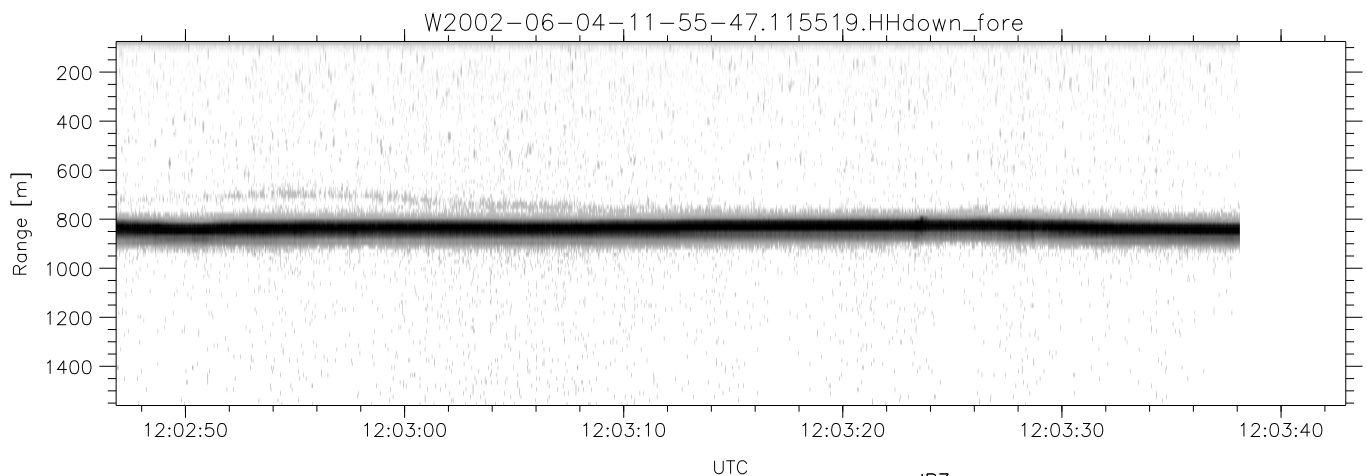
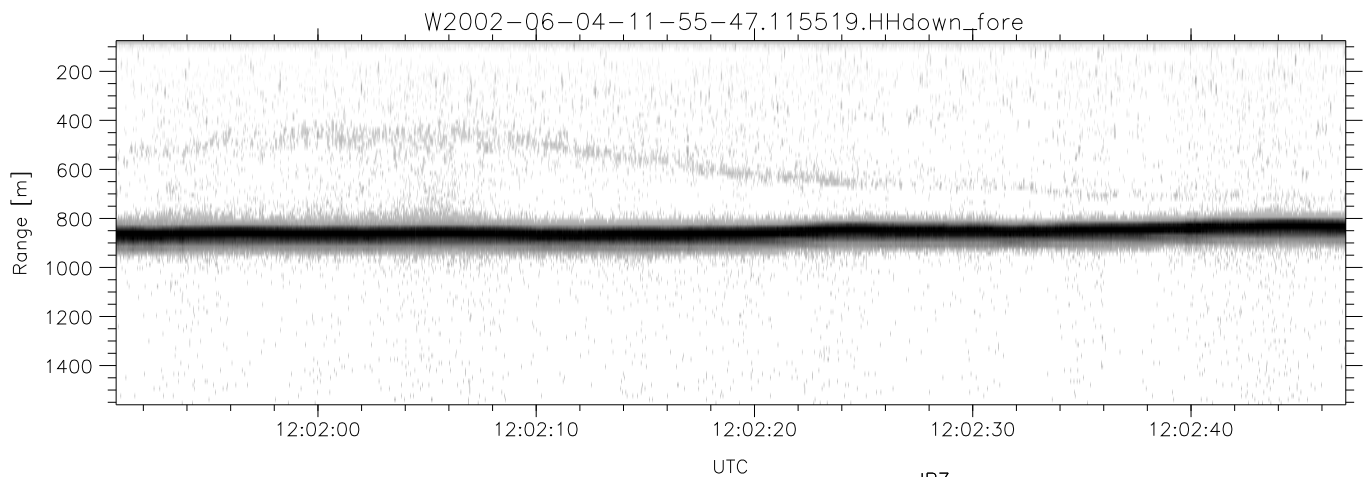
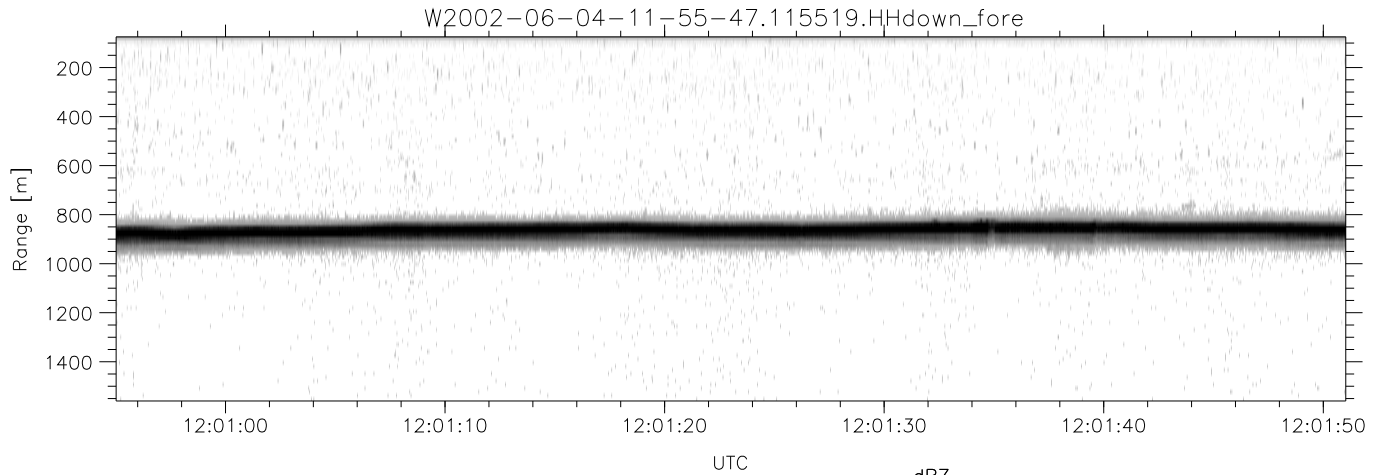
W2002-06-04-11-55-47 - PPMAG4
 IRIG:1,UTC: 11:55:19.75 to 12:10:59.27, Dur: 940s
 TimeLngth: 939.52s, TimeInt: 29ms (34.2pps)
 TimeCor=-13.0s, DSPDif(mn,min,mx):28,28,326
 PPS(min,max,std): 19,36,2.37
 Prof: 644 to 32763, NumProf(t/r): 32119/17069
 ProcTime/Recs: 11:55:19-12:03:38/0-17068
 MxACQtime: 33ms; DRate: 191.4KB/s; Flags: 0, 0, 0
 Pulse: 275ns, IFilt: 5.0MHz; ppPol: HH HV VV
 TxPol: HHVV, PRF: 20 10 20 10 kHz
 Range: Delay 75m, Spacing 15m, Gates 100
 Ave. Pulses: 84, Rng/Prof Aspect@90m/s: 5.7

	Min	Max	Mean	Std	Varc%
hhN(dB)	-67.14	-63.81	-65.31	-75.36	9.9
vvN(dB)	-67.89	-64.59	-66.06	-76.09	9.9
hhL(dB)	-13.63	-9.43	-12.02	-22.04	10.0
vvL(dB)	-21.60	-13.96	-16.64	-23.81	19.2
ppN(m/s)	-12.55	12.79	0.06	4.14	
ppT(m/s)	-99.13	101.08	0.50	32.68	
hh/vv(dB)	-NaN	97.11	52.00	74.19	1654
vh/hh(dB)	-NaN	-30.20	-45.56	-40.61	312.
hv/vv(dB)	-NaN	-30.90	-49.11	-44.39	296.
hnjmp(dB)	-2.63	2.02	-0.07	-8.71	13.7
vnjmp(dB)	-2.43	2.54	-0.08	-8.62	14.0



IHOP 2002 (dual-antenna config, modes 1,3,4,7) Data (cal: 55.0,50.0)

W2002-06-04-11-55-47 - PPMAG4	Min	Max	Mean	Std	Varc%	
IRIG:1,UTC: 11:55:19.75 to 12:10:59.27, Dur: 940s	hhN (dB)	-67.14	-63.81	-65.31	-75.36	9.9
TimeLngth: 939.52s, TimeInt: 29ms (34.2pps)	vvN (dB)	-67.89	-64.59	-66.06	-76.09	9.9
TimeCor=-13.0s, DSPDif(mn,min,mx):28,28,326	hhL (dB)	-13.63	-9.43	-12.02	-22.04	10.0
PPS(min,max,std): 19,36,2.37	vvL (dB)	-21.60	-13.96	-16.64	-23.81	19.2
Prof: 644 to 32763, NumProf(t/r): 32119/17069	ppN (m/s)	-12.55	12.79	0.06	4.14	
ProcTime/Recs: 11:55:19-12:03:38/0-17068	ppT (m/s)	-99.13	101.08	0.50	32.68	
MxACQtime: 33ms; DRate: 191.4KB/s; Flags: 0, 0, 0	hh/vv (dB)	-NaN	97.11	52.00	74.19	1654
Pulse: 275ns, IFfilt: 5.0MHz; ppPol: HH HV VV	vh/hh (dB)	-NaN	-30.20	-45.56	-40.61	312.
TxPol: HHVV, PRF: 20 10 20 10 kHz	hv/vv (dB)	-NaN	-30.90	-49.11	-44.39	296.
Range: Delay 75m, Spacing 15m, Gates 100	hnjmp (dB)	-2.63	2.02	-0.07	-8.71	13.7
Ave. Pulses: 84, Rng/Prof Aspect@90m/s: 5.7	vnjmp (dB)	-2.43	2.54	-0.08	-8.62	14.0



IHOP 2002 (dual-antenna config, modes 1,3,4,7) Data (cal: 55.0,50.0)

	Min	Max	Mean	Std	Varc%	
W2002-06-04-11-55-47 - PPMAG4						
IRIG:1,UTC: 11:55:19.75 to 12:10:59.27, Dur: 940s	hhN (dB)	-67.14	-63.81	-65.31	-75.36	9.9
TimeLngth: 939.52s, TimeInt: 29ms (34.2pps)	vvN (dB)	-67.89	-64.59	-66.06	-76.09	9.9
TimeCor=-13.0s, DSPDif(mn,min,mx):28,28,326	hhL (dB)	-13.63	-9.43	-12.02	-22.04	10.0
PPS(min,max,std): 19,36,2.37	vvL (dB)	-21.60	-13.96	-16.64	-23.81	19.2
Prof: 644 to 32763, NumProf(t/r): 32119/17069	ppN (m/s)	-12.55	12.79	0.06	4.14	
ProcTime/Recs: 11:55:19-12:03:38/0-17068	ppT (m/s)	-99.13	101.08	0.50	32.68	
MxACQtime: 33ms; DRate: 191.4KB/s; Flags: 0, 0, 0	hh/vv (dB)	-NaN	97.11	52.00	74.19	1654
Pulse: 275ns, IFilt: 5.0MHz; ppPol: HH HV VV	vh/hh (dB)	-NaN	-30.20	-45.56	-40.61	312.
TxPol: HHVV, PRF: 20 10 20 10 kHz	hv/vv (dB)	-NaN	-30.90	-49.11	-44.39	296.
Range: Delay 75m, Spacing 15m, Gates 100	hn_jmp (dB)	-2.63	2.02	-0.07	-8.71	13.7
Ave. Pulses: 84, Rng/Prof Aspect@90m/s: 5.7	vn_jmp (dB)	-2.43	2.54	-0.08	-8.62	14.0