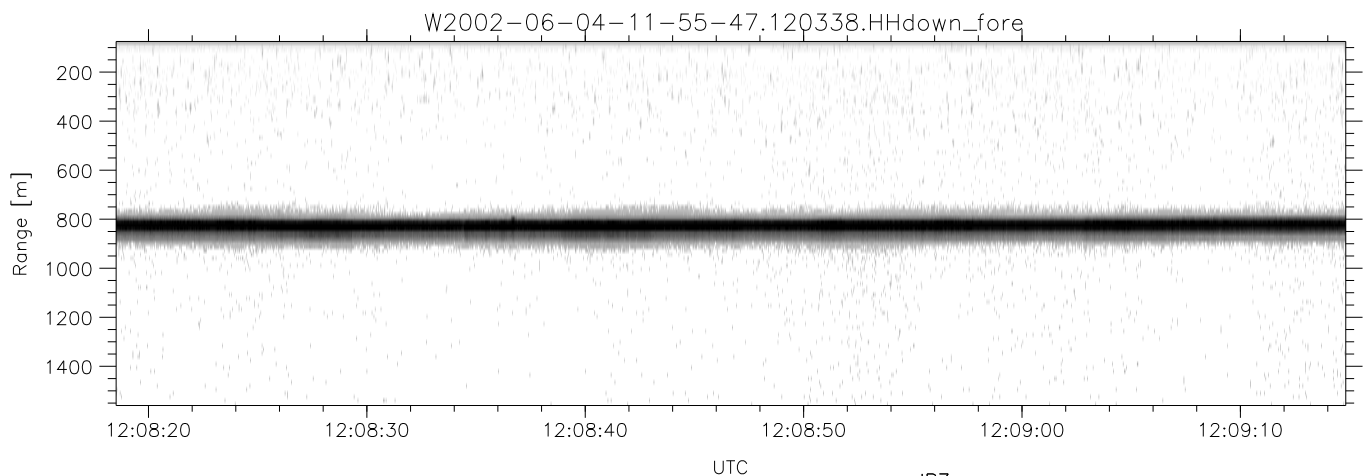
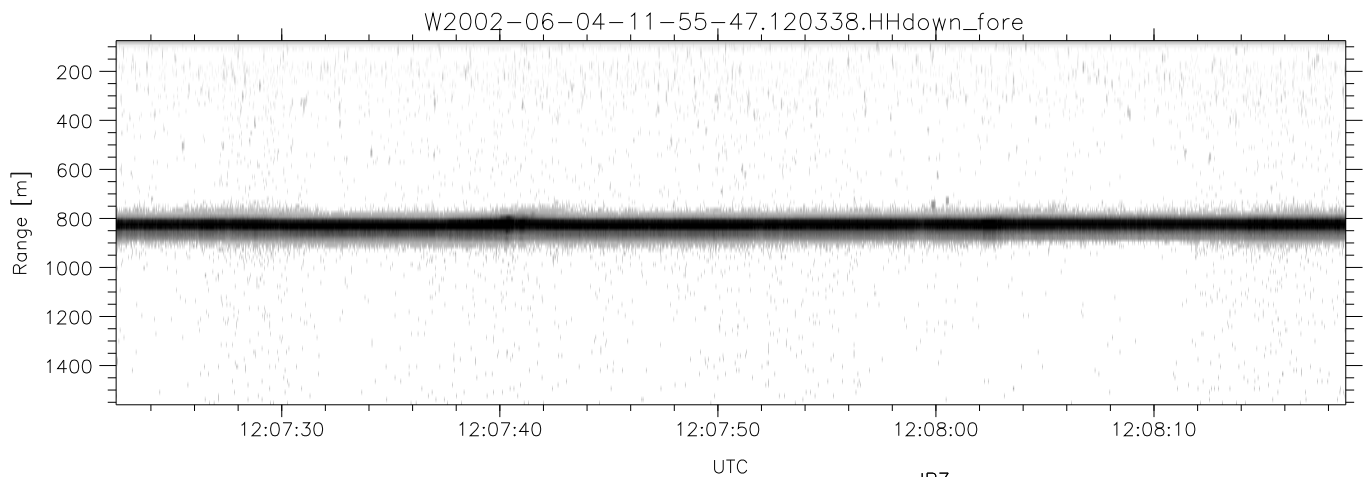
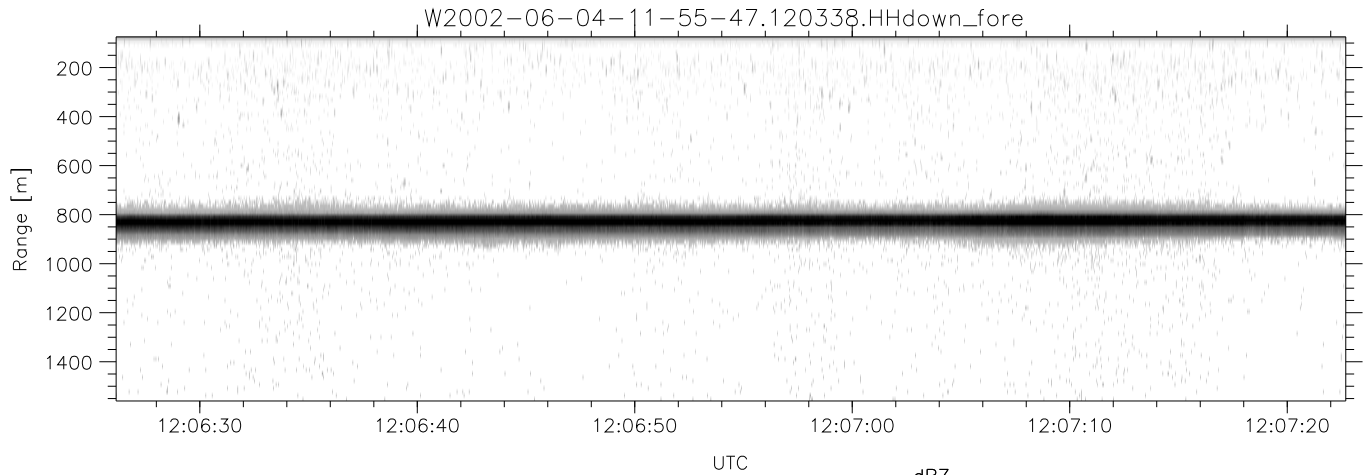


IHOP 2002 (dual-antenna config, modes 1,3,4,7) Data (cal: 55.0,50.0)

W2002-06-04-11-55-47 - PPMAG4
 IRIG:1,UTC: 11:55:19.75 to 12:10:59.27, Dur: 940s
 TimeLngth: 939.52s, TimeInt: 29ms (34.2pps)
 TimeCor=-13.0s, DSPDif(mn,min,mx):29,28,327
 PPS(min,max,std): 23,36,2.34
 Prof: 644 to 32763, NumProf(t/r): 32119/15050
 ProcTime/Recs: 12:03:38-12:10:59/17069-32118
 MxACQtime: 33ms; DRate: 191.4KB/s; Flags: 0, 0, 0
 Pulse: 275ns, IFfilt: 5.0MHz; ppPol: HH HV VV
 TxPol: HHVV, PRF: 20 10 20 10 kHz
 Range: Delay 75m, Spacing 15m, Gates 100
 Ave. Pulses: 84, Rng/Prof Aspect@90m/s: 5.7

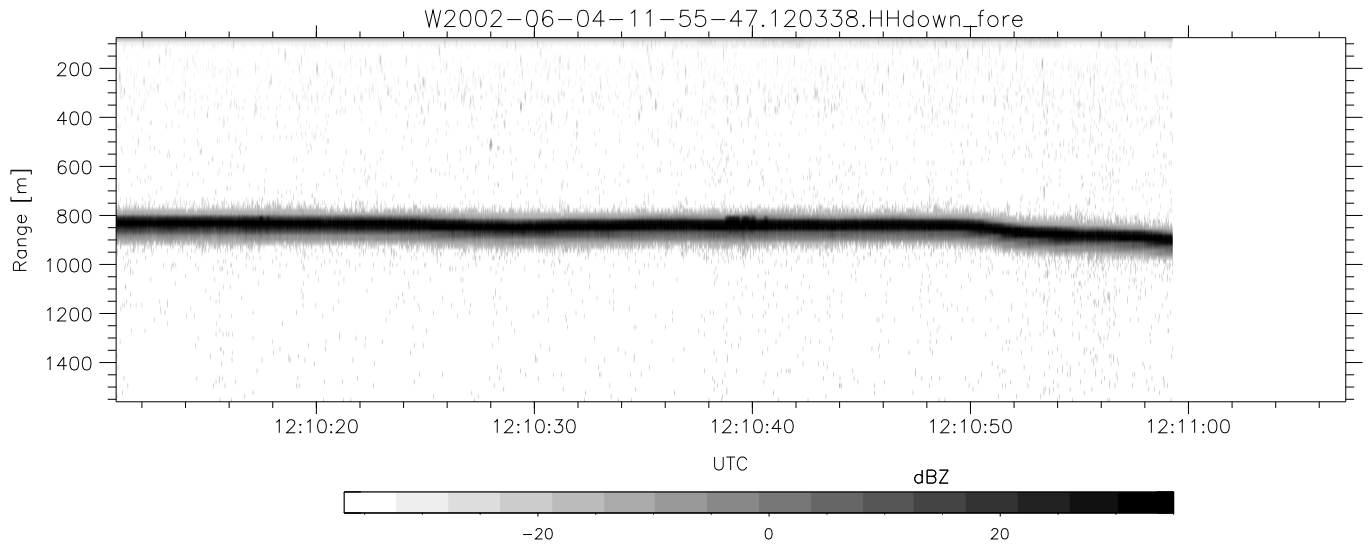
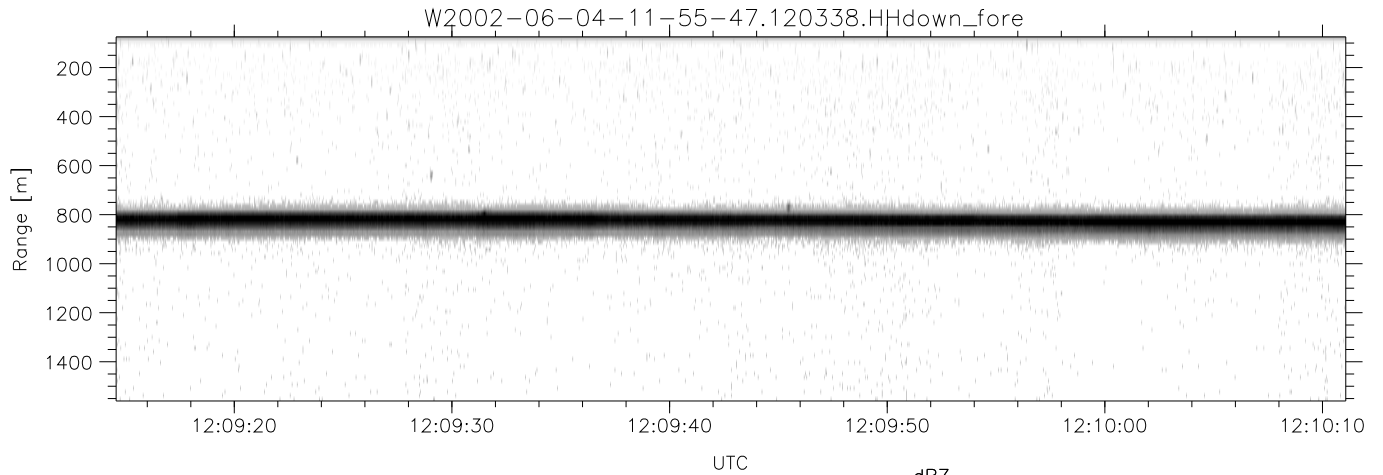
	Min	Max	Mean	Std	Varc%
hhN(dB)	-67.23	-63.79	-65.38	-75.44	9.8
vvN(dB)	-67.81	-64.39	-66.09	-76.08	10.0
hhL(dB)	-13.60	-9.35	-12.17	-21.41	11.9
vvL(dB)	-21.47	-13.97	-16.74	-23.44	21.4
ppN(m/s)	-12.40	12.50	-0.00	4.16	
ppT(m/s)	-97.94	98.76	-0.03	32.84	
hh/vv(dB)	-NaN	97.98	51.64	74.42	1898
vh/hh(dB)	-NaN	-30.12	-45.82	-41.36	278.
hv/vv(dB)	-NaN	-30.45	-48.85	-44.68	261.
hnjmp(dB)	-2.13	2.59	0.15	-8.42	13.9
vnjmp(dB)	-2.13	2.37	0.17	-8.31	14.2



IHOP 2002 (dual-antenna config, modes 1,3,4,7) Data (cal: 55.0,50.0)

W2002-06-04-11-55-47 - PPMAG4
 IRIG:1,UTC: 11:55:19.75 to 12:10:59.27, Dur: 940s
 TimeLngth: 939.52s, TimeInt: 29ms (34.2pps)
 TimeCor=-13.0s, DSPDif(mn,min,mx):29,28,327
 PPS(min,max,std): 23,36,2.34
 Prof: 644 to 32763, NumProf(t/r): 32119/15050
 ProcTime/Recs: 12:03:38-12:10:59/17069-32118
 MxACQtime: 33ms; DRate: 191.4KB/s; Flags: 0, 0, 0
 Pulse: 275ns, IFfilt: 5.0MHz; ppPol: HH HV VV
 TxPol: HHVV, PRF: 20 10 20 10 kHz
 Range: Delay 75m, Spacing 15m, Gates 100
 Ave. Pulses: 84, Rng/Prof Aspect@90m/s: 5.7

	Min	Max	Mean	Std	Varc%
hhN(dB)	-67.23	-63.79	-65.38	-75.44	9.8
vvN(dB)	-67.81	-64.39	-66.09	-76.08	10.0
hhL(dB)	-13.60	-9.35	-12.17	-21.41	11.9
vvL(dB)	-21.47	-13.97	-16.74	-23.44	21.4
ppN(m/s)	-12.40	12.50	-0.00	4.16	
ppT(m/s)	-97.94	98.76	-0.03	32.84	
hh/vv(dB)	-NaN	97.98	51.64	74.42	1898
vh/hh(dB)	-NaN	-30.12	-45.82	-41.36	278.
hv/vv(dB)	-NaN	-30.45	-48.85	-44.68	261.
hnjmp(dB)	-2.13	2.59	0.15	-8.42	13.9
vnjmp(dB)	-2.13	2.37	0.17	-8.31	14.2



IHOP 2002 (dual-antenna config, modes 1,3,4,7) Data (cal: 55.0,50.0)

W2002-06-04-11-55-47 - PPMAG4						
IRIG:1,UTC: 11:55:19.75 to 12:10:59.27, Dur: 940s	hhN(dB)	Min	Max	Mean	Std	Varc%
TimeLngth: 939.52s, TimeInt: 29ms (34.2pps)	vvN(dB)	-67.81	-64.39	-66.09	-76.08	10.0
TimeCor=-13.0s, DSPDif(mn,min,mx):29,28,327	hhL(dB)	-13.60	-9.35	-12.17	-21.41	11.9
PPS(min,max,std): 23,36,2.34	vvL(dB)	-21.47	-13.97	-16.74	-23.44	21.4
Prof: 644 to 32763, NumProf(t/r): 32119/15050	ppN(m/s)	-12.40	12.50	-0.00	4.16	
ProcTime/Recs: 12:03:38-12:10:59/17069-32118	ppT(m/s)	-97.94	98.76	-0.03	32.84	
MxACQtime: 33ms; DRate: 191.4KB/s; Flags: 0, 0, 0	hh/vv(dB)	-NaN	97.98	51.64	74.42	1898
Pulse: 275ns, IFfilt: 5.0MHz; ppPol: HH HV VV	vh/hh(dB)	-NaN	-30.12	-45.82	-41.36	278.
TxPol: HHVV, PRF: 20 10 20 10 kHz	hv/vv(dB)	-NaN	-30.45	-48.85	-44.68	261.
Range: Delay 75m, Spacing 15m, Gates 100	hnjmp(dB)	-2.13	2.59	0.15	-8.42	13.9
Ave. Pulses: 84, Rng/Prof Aspect@90m/s: 5.7	vnjmp(dB)	-2.13	2.37	0.17	-8.31	14.2