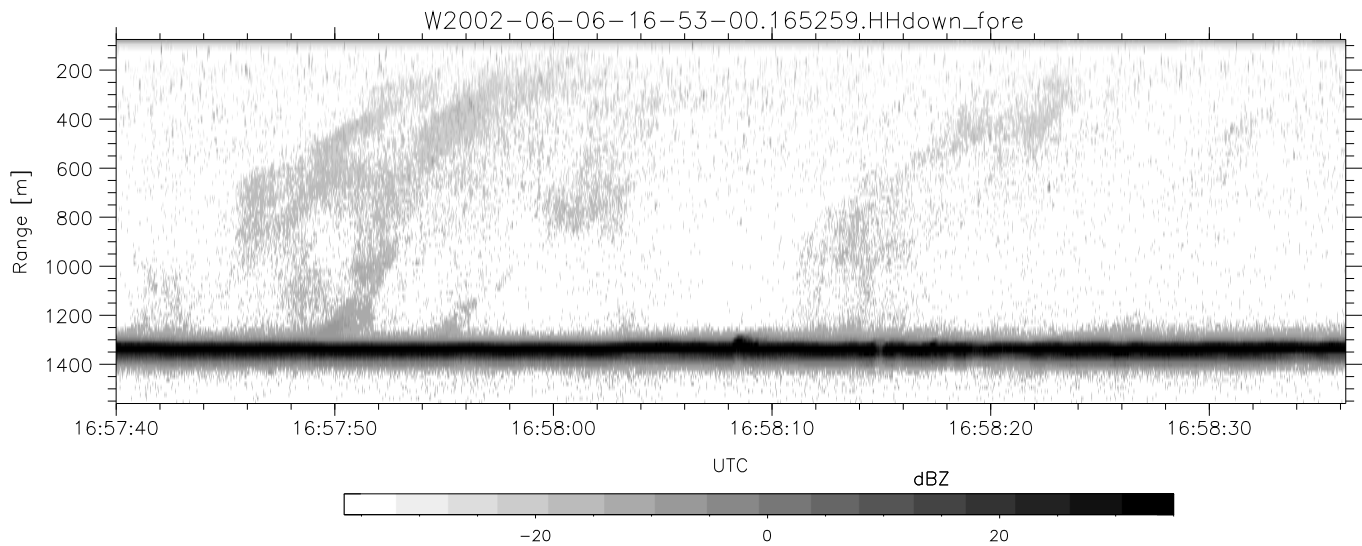
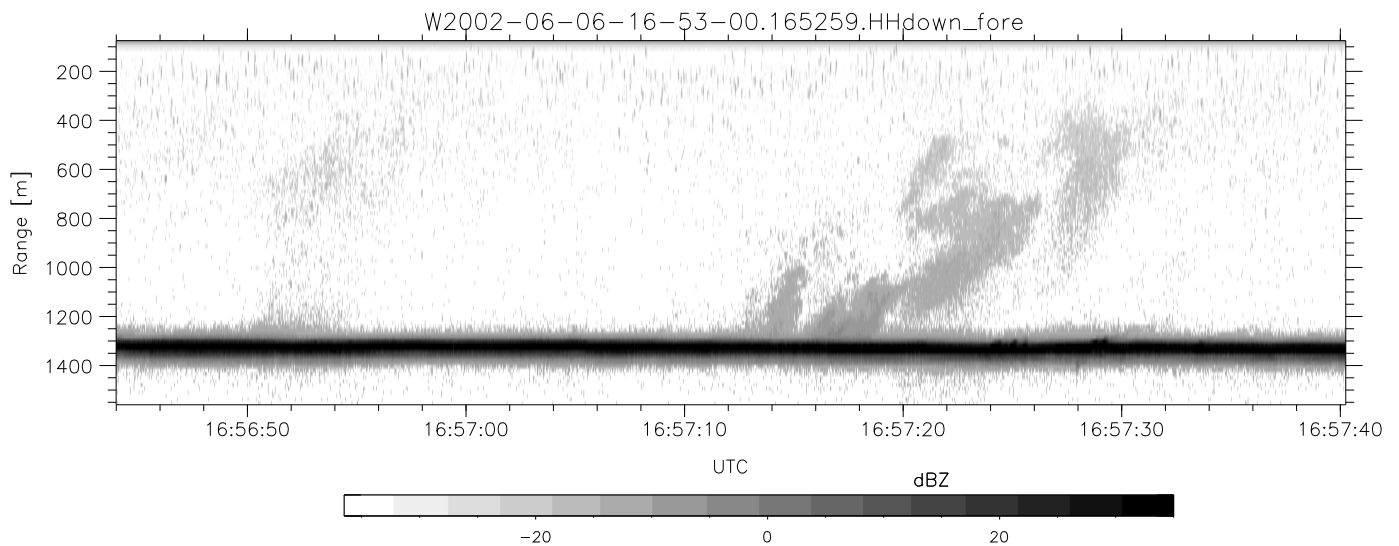
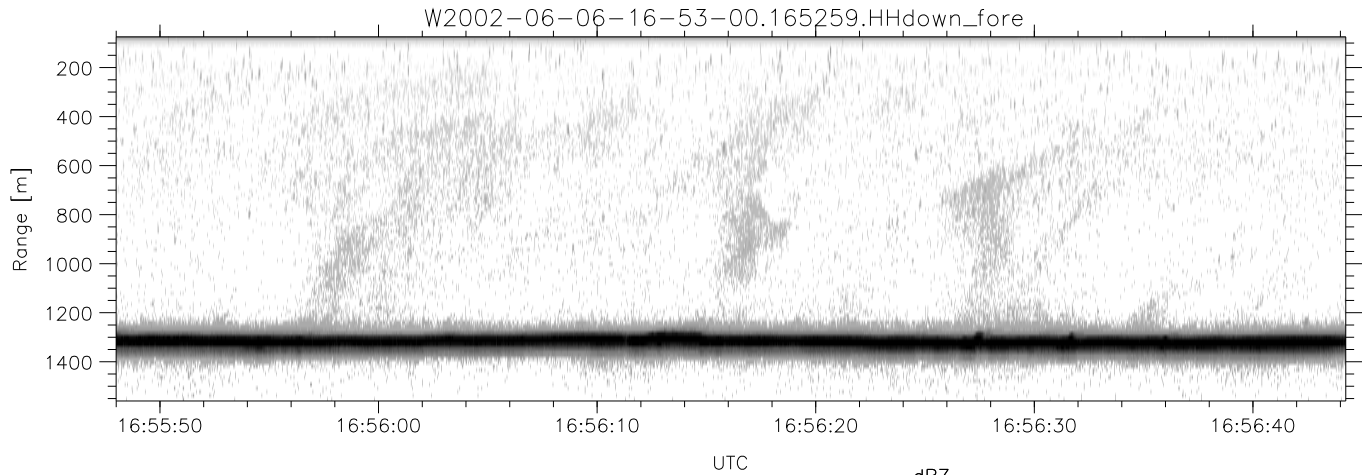


IHOP 2002 (dual-antenna config, modes 1,3,4,7) Data (cal: 55.0,50.0)

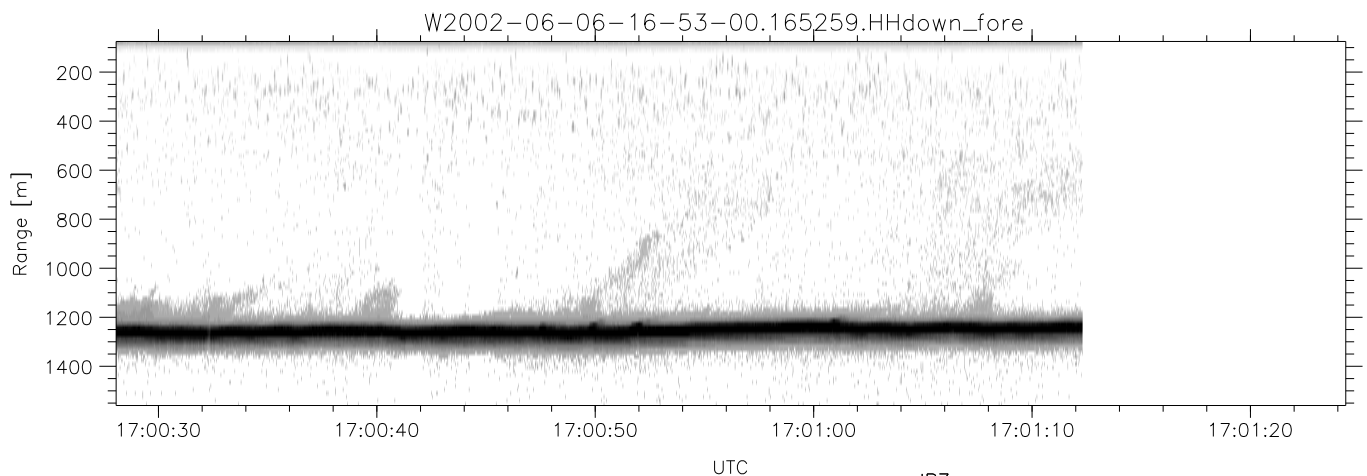
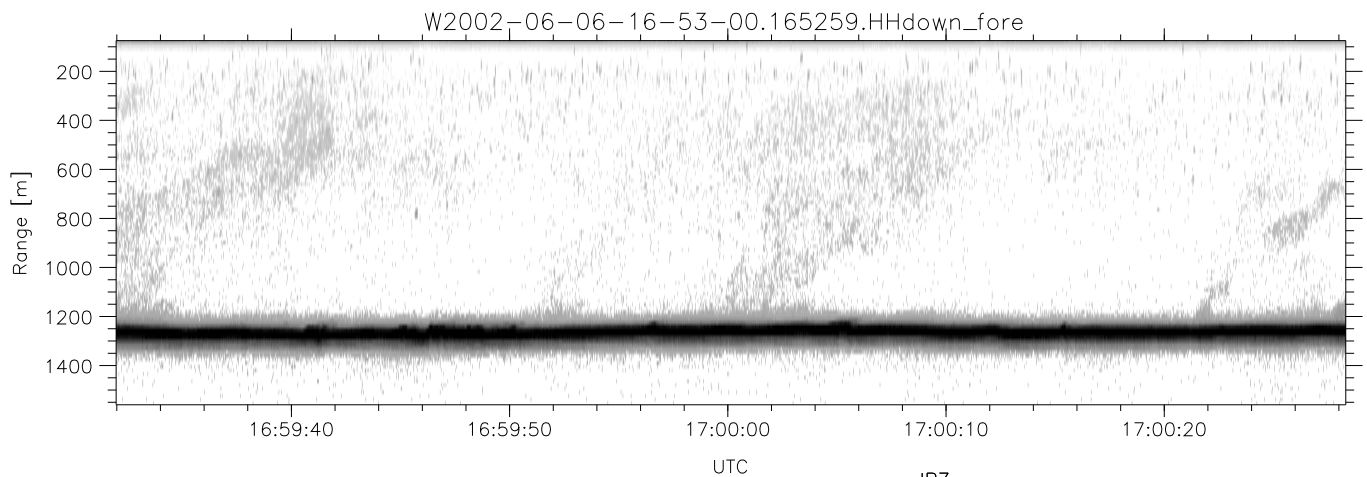
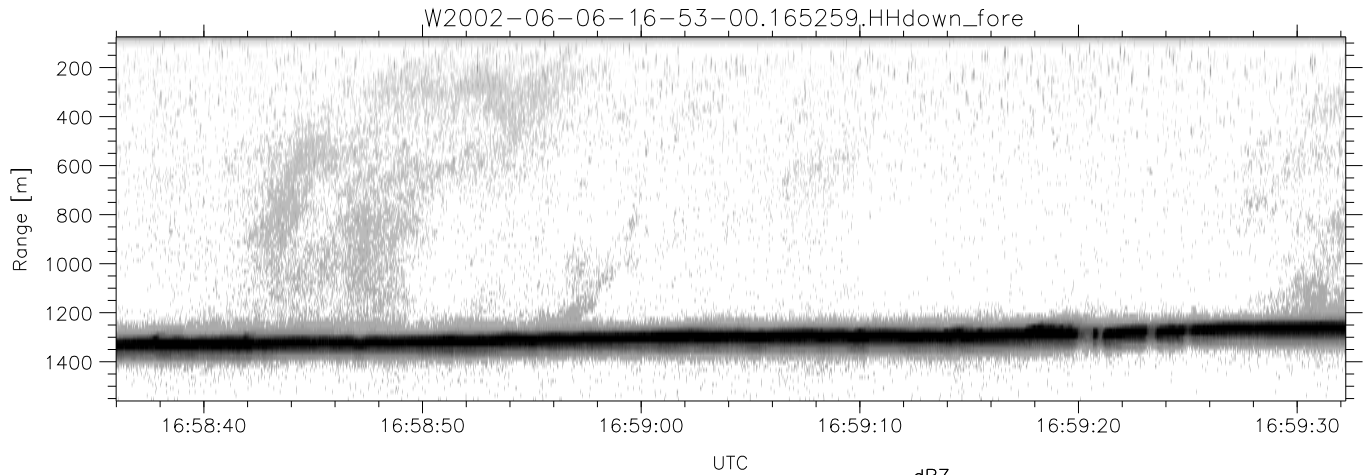
W2002-06-06-16-53-00 - PPMAG4
 IRIG:1,UTC: 16:52:59.93 to 17:12:32.54, Dur: 1173s
 TimeLngth: 1172.61s, TimeInt: 28ms (34.7pps)
 TimeCor=-13.0s, DSPDif(mn,min,mx):28,28,322
 PPS(min,max,std): 23,36,2.17
 Prof: 1201 to 41860, NumProf(t/r): 40659/17069
 ProcTime/Recs: 16:52:59-17:01:12/0-17068
 MxACQtime: 33ms; DRate: 194.1KB/s; Flags: 0, 0, 0
 Pulse: 275ns, IFfilt: 5.0MHz; ppPol: HH HV VV
 TxPol: HHVV, PRF: 20 10 20 10 kHz
 Range: Delay 75m, Spacing 15m, Gates 100
 Ave. Pulses: 84, Rng/Prof Aspect@90m/s: 5.8

	Min	Max	Mean	Std	Varc%
hhN(dB)	-67.50	-63.76	-65.40	-75.42	10.0
vvN(dB)	-68.18	-64.33	-66.05	-76.06	10.0
hhL(dB)	-12.75	-6.04	-8.35	-16.54	15.2
vvL(dB)	-24.02	-13.25	-15.22	-20.99	26.5
ppN(m/s)	-12.63	12.95	-0.00	4.14	
ppT(m/s)	-99.77	102.32	-0.04	32.69	
hh/vv(dB)	-NaN	106.22	56.74	81.49	2984
vh/hh(dB)	-NaN	-29.80	-45.52	-41.41	258.
hv/vv(dB)	-NaN	-29.62	-50.12	-44.80	340.
hnjmp(dB)	-2.15	2.38	0.16	-8.46	13.7
vnjmp(dB)	-2.33	2.79	0.15	-8.37	14.1



IHOP 2002 (dual-antenna config, modes 1,3,4,7) Data (cal: 55.0,50.0)

W2002-06-06-16-53-00 - PPMAG4	Min	Max	Mean	Std	Varc%	
IRIG:1,UTC: 16:52:59.93 to 17:12:32.54, Dur: 1173s	hhN (dB)	-67.50	-63.76	-65.40	-75.42	10.0
TimeLngth: 1172.61s, TimeInt: 28ms (34.7pps)	vvN (dB)	-68.18	-64.33	-66.05	-76.06	10.0
TimeCor=-13.0s, DSPDif(mn,min,mx):28,28,322	hhL (dB)	-12.75	-6.04	-8.35	-16.54	15.2
PPS(min,max,std): 23,36,2.17	vvL (dB)	-24.02	-13.25	-15.22	-20.99	26.5
Prof: 1201 to 41860, NumProf(t/r): 40659/17069	ppN (m/s)	-12.63	12.95	-0.00	4.14	
ProcTime/Recs: 16:52:59-17:01:12/0-17068	ppT (m/s)	-99.77	102.32	-0.04	32.69	
MxACQtime: 33ms; DRate: 194.1KB/s; Flags: 0, 0, 0	hh/vv (dB)	-NaN	106.22	56.74	81.49	2984
Pulse: 275ns, IFfilt: 5.0MHz; ppPol: HH HV VV	vh/hh (dB)	-NaN	-29.80	-45.52	-41.41	258.
TxPol: HHVV, PRF: 20 10 20 10 kHz	hv/vv (dB)	-NaN	-29.62	-50.12	-44.80	340.
Range: Delay 75m, Spacing 15m, Gates 100	hn_jmp (dB)	-2.15	2.38	0.16	-8.46	13.7
Ave. Pulses: 84, Rng/Prof Aspect@90m/s: 5.8	vn_jmp (dB)	-2.33	2.79	0.15	-8.37	14.1



IHOP 2002 (dual-antenna config, modes 1,3,4,7) Data (cal: 55.0,50.0)

W2002-06-06-16-53-00 - PPMAG4
 IRIG:1,UTC: 16:52:59.93 to 17:12:32.54, Dur: 1173s
 TimeLngth: 1172.61s, TimeInt: 28ms (34.7pps)
 TimeCor=-13.0s, DSPDif(mn,min,mx):28,28,322
 PPS(min,max,std): 23,36,2.17
 Prof: 1201 to 41860, NumProf(t/r): 40659/17069
 ProcTime/Recs: 16:52:59-17:01:12/0-17068
 MxACQtime: 33ms; DRate: 194.1KB/s; Flags: 0, 0, 0
 Pulse: 275ns, IFfilt: 5.0MHz; ppPol: HH HV VV
 TxPol: HHVV, PRF: 20 10 20 10 kHz
 Range: Delay 75m, Spacing 15m, Gates 100
 Ave. Pulses: 84, Rng/Prof Aspect@90m/s: 5.8

	Min	Max	Mean	Std	Varc%
hhN(dB)	-67.50	-63.76	-65.40	-75.42	10.0
vvN(dB)	-68.18	-64.33	-66.05	-76.06	10.0
hhL(dB)	-12.75	-6.04	-8.35	-16.54	15.2
vvL(dB)	-24.02	-13.25	-15.22	-20.99	26.5
ppN(m/s)	-12.63	12.95	-0.00	4.14	
ppT(m/s)	-99.77	102.32	-0.04	32.69	
hh/vv(dB)	-NaN	106.22	56.74	81.49	2984
vh/hh(dB)	-NaN	-29.80	-45.52	-41.41	258.
hv/vv(dB)	-NaN	-29.62	-50.12	-44.80	340.
hnjmp(dB)	-2.15	2.38	0.16	-8.46	13.7
vnjmp(dB)	-2.33	2.79	0.15	-8.37	14.1