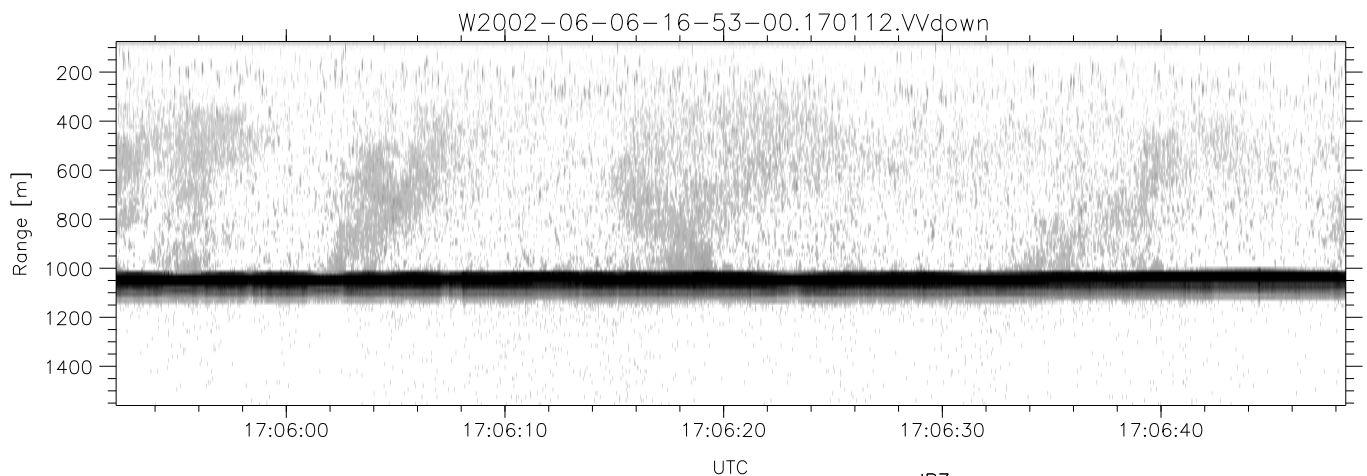
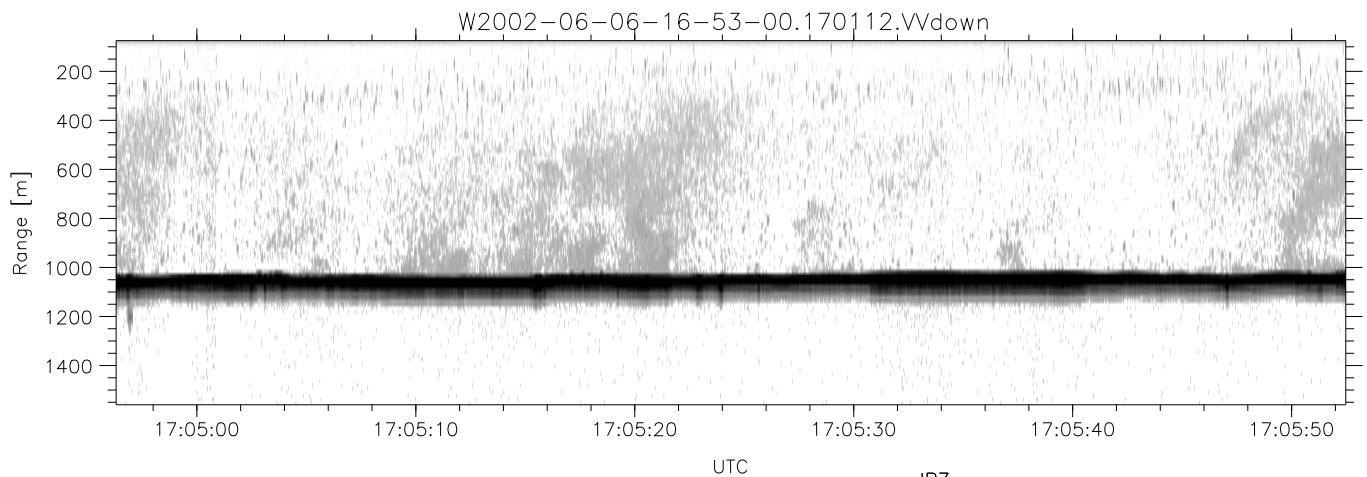
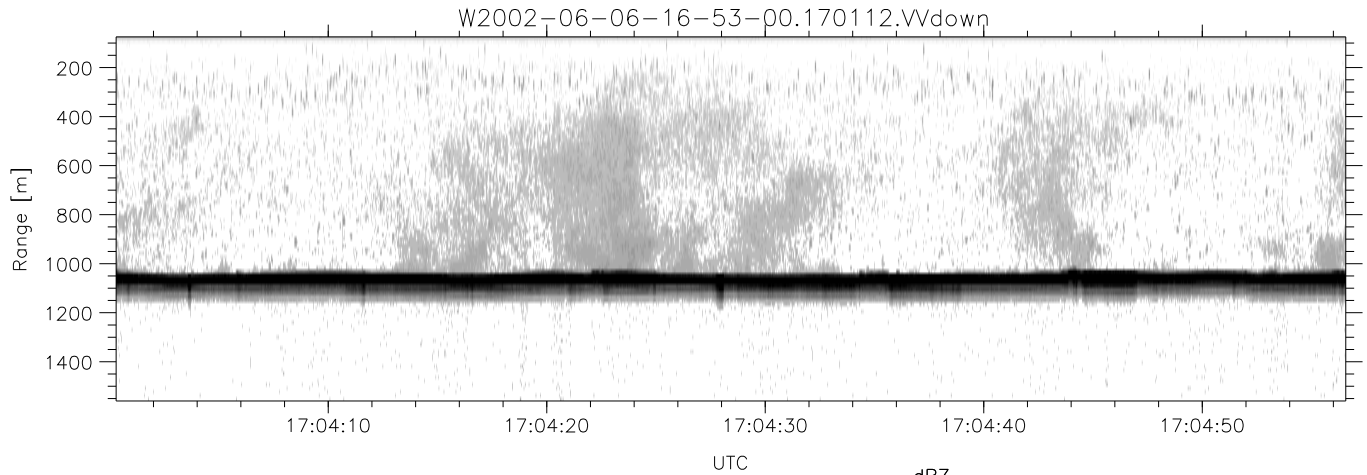


IHOP 2002 (dual-antenna config, modes 1,3,4,7) Data (cal: 55.0,50.0)

W2002-06-06-16-53-00 - PPMAG4  
 IRIG:1,UTC: 16:52:59.93 to 17:12:32.54, Dur: 1173s  
 TimeLngth: 1172.61s, TimeInt: 28ms (34.7pps)  
 TimeCor=-13.0s, DSPDif(mn,min,mx):28,28,316  
 PPS(min,max,std): 25,36,2.15  
 Prof: 1201 to 41860, NumProf(t/r): 40659/17069  
 ProcTime/Recs: 17:01:12-17:09:24/17069-34137  
 MxACQtime: 33ms; DRate: 194.1KB/s; Flags: 0, 0, 0  
 Pulse: 275ns, IFfilt: 5.0MHz; ppPol: HH HV VV  
 TxPol: HHVV, PRF: 20 10 20 10 kHz  
 Range: Delay 75m, Spacing 15m, Gates 100  
 Ave. Pulses: 84, Rng/Prof Aspect@90m/s: 5.8

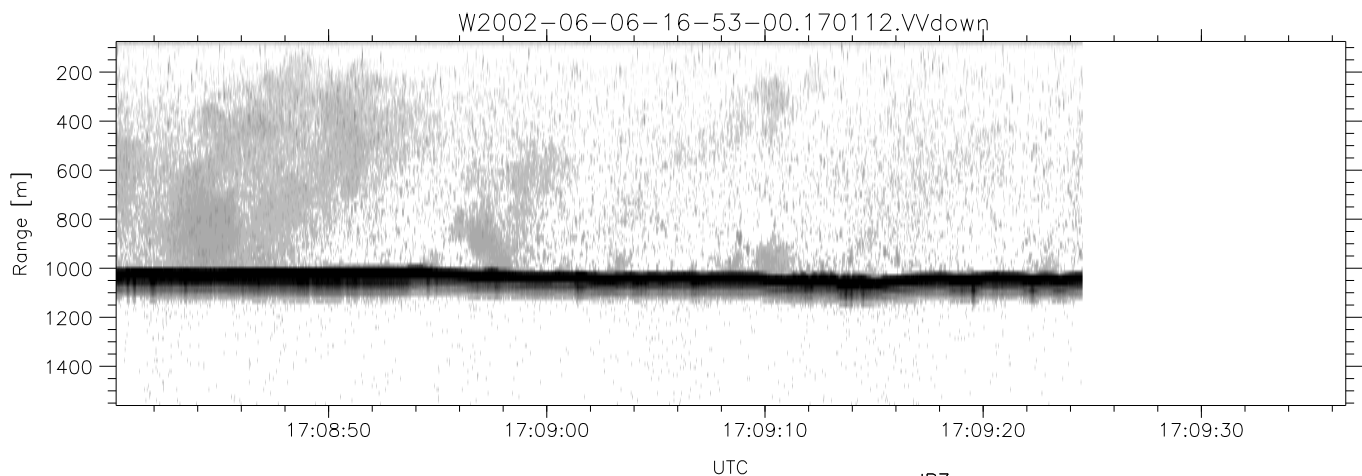
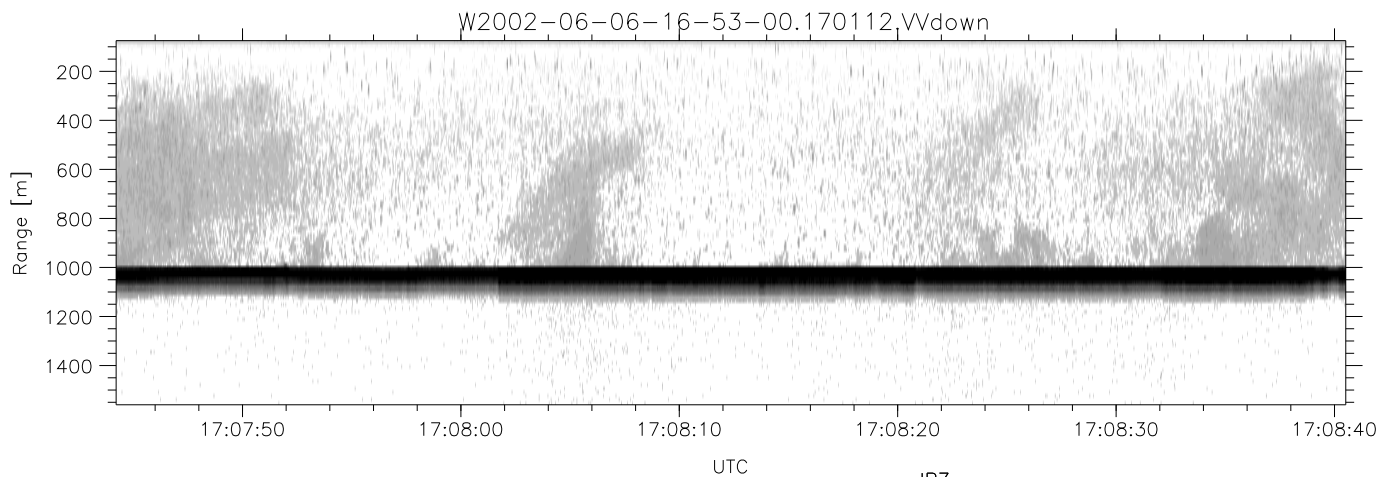
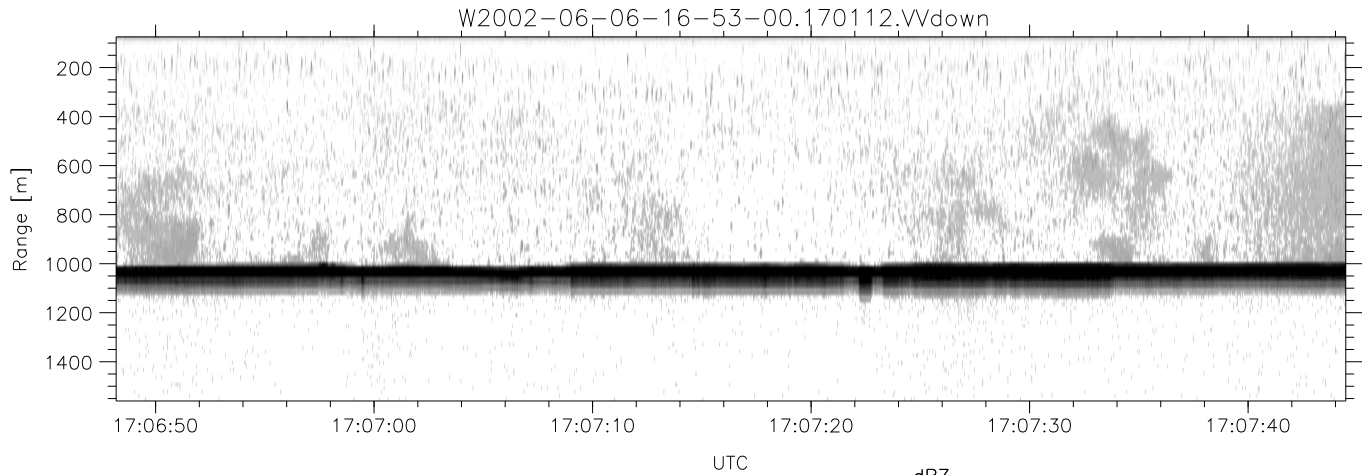
	Min	Max	Mean	Std	Varc%
hhN(dB)	-67.24	-63.28	-65.39	-75.32	10.2
vvN(dB)	-67.69	-64.14	-66.03	-76.00	10.1
hhL(dB)	-13.25	-6.37	-9.04	-16.68	17.2
vvL(dB)	-19.14	-13.10	-14.57	-23.47	12.9
ppN(m/s)	-12.60	12.19	0.06	4.09	
ppT(m/s)	-99.53	96.28	0.50	32.31	
hh/vv(dB)	-NaN	102.75	48.14	81.67	2256
vh/hh(dB)	-NaN	-29.12	-45.64	-40.91	297.
hv/vv(dB)	-NaN	-28.99	-50.15	-44.97	329.
hnjmp(dB)	-2.35	2.14	-0.08	-8.66	13.9
vnjmp(dB)	-2.35	2.07	-0.06	-8.60	14.0



IHOP 2002 (dual-antenna config, modes 1,3,4,7) Data (cal: 55.0,50.0)

W2002-06-06-16-53-00 - PPMAG4  
 IRIG:1,UTC: 16:52:59.93 to 17:12:32.54, Dur: 1173s  
 TimeLngth: 1172.61s, TimeInt: 28ms (34.7pps)  
 TimeCor=-13.0s, DSPDif(mn,min,mx):28,28,316  
 PPS(min,max,std): 25,36,2.15  
 Prof: 1201 to 41860, NumProf(t/r): 40659/17069  
 ProcTime/Recs: 17:01:12-17:09:24/17069-34137  
 MxACQtime: 33ms; DRate: 194.1KB/s; Flags: 0, 0, 0  
 Pulse: 275ns, IFfilt: 5.0MHz; ppPol: HH HV VV  
 TxPol: HHVV, PRF: 20 10 20 10 kHz  
 Range: Delay 75m, Spacing 15m, Gates 100  
 Ave. Pulses: 84, Rng/Prof Aspect@90m/s: 5.8

	Min	Max	Mean	Std	Varc%
hhN(dB)	-67.24	-63.28	-65.39	-75.32	10.2
vvN(dB)	-67.69	-64.14	-66.03	-76.00	10.1
hhL(dB)	-13.25	-6.37	-9.04	-16.68	17.2
vvL(dB)	-19.14	-13.10	-14.57	-23.47	12.9
ppN(m/s)	-12.60	12.19	0.06	4.09	
ppT(m/s)	-99.53	96.28	0.50	32.31	
hh/vv(dB)	-NaN	102.75	48.14	81.67	2256
vh/hh(dB)	-NaN	-29.12	-45.64	-40.91	297.
hv/vv(dB)	-NaN	-28.99	-50.15	-44.97	329.
hnjmp(dB)	-2.35	2.14	-0.08	-8.66	13.9
vnjmp(dB)	-2.35	2.07	-0.06	-8.60	14.0



IHOP 2002 (dual-antenna config, modes 1,3,4,7) Data (cal: 55.0,50.0)

W2002-06-06-16-53-00 - PPMAG4  
 IRIG:1,UTC: 16:52:59.93 to 17:12:32.54, Dur: 1173s  
 TimeLngth: 1172.61s, TimeInt: 28ms (34.7pps)  
 TimeCor=-13.0s, DSPDif(mn,min,mx):28,28,316  
 PPS(min,max,std): 25,36,2.15  
 Prof: 1201 to 41860, NumProf(t/r): 40659/17069  
 ProcTime/Recs: 17:01:12-17:09:24/17069-34137  
 MxACQtime: 33ms; DRate: 194.1KB/s; Flags: 0, 0, 0  
 Pulse: 275ns, IFfilt: 5.0MHz; ppPol: HH HV VV  
 TxPol: HHVV, PRF: 20 10 20 10 kHz  
 Range: Delay 75m, Spacing 15m, Gates 100  
 Ave. Pulses: 84, Rng/Prof Aspect@90m/s: 5.8

	Min	Max	Mean	Std	Varc%
hhN(dB)	-67.24	-63.28	-65.39	-75.32	10.2
vvN(dB)	-67.69	-64.14	-66.03	-76.00	10.1
hhL(dB)	-13.25	-6.37	-9.04	-16.68	17.2
vvL(dB)	-19.14	-13.10	-14.57	-23.47	12.9
ppN(m/s)	-12.60	12.19	0.06	4.09	
ppT(m/s)	-99.53	96.28	0.50	32.31	
hh/vv(dB)	-NaN	102.75	48.14	81.67	2256
vh/hh(dB)	-NaN	-29.12	-45.64	-40.91	297.
hv/vv(dB)	-NaN	-28.99	-50.15	-44.97	329.
hnjmp(dB)	-2.35	2.14	-0.08	-8.66	13.9
vnjmp(dB)	-2.35	2.07	-0.06	-8.60	14.0