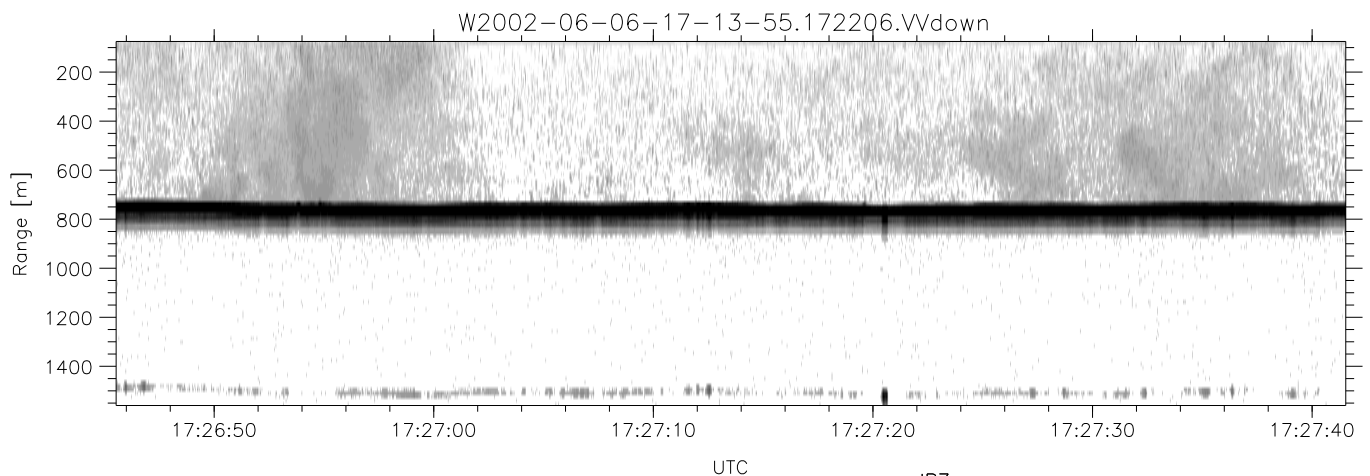
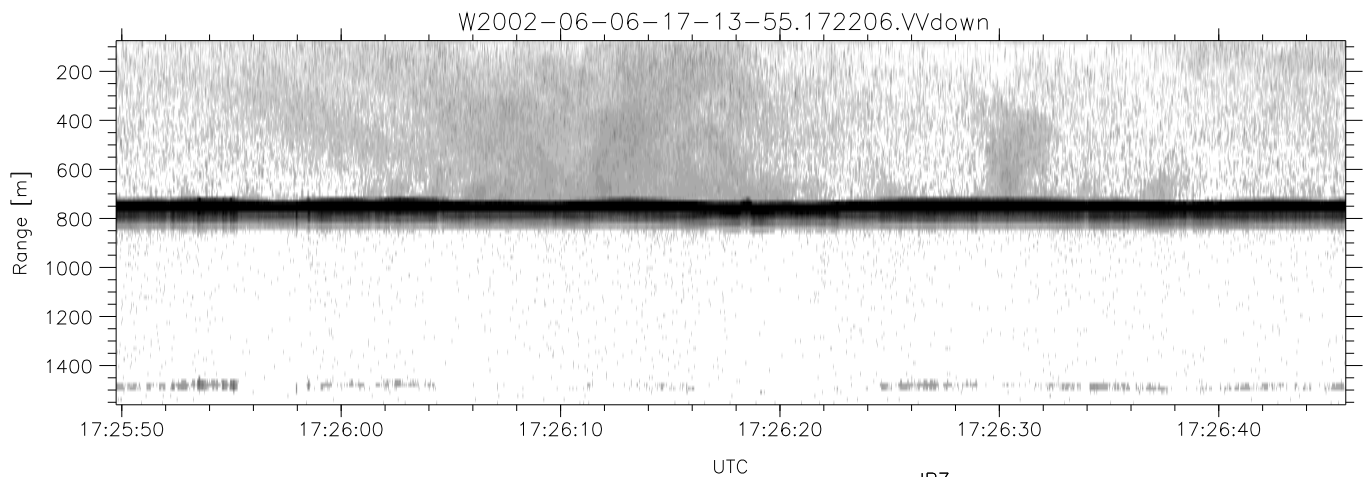
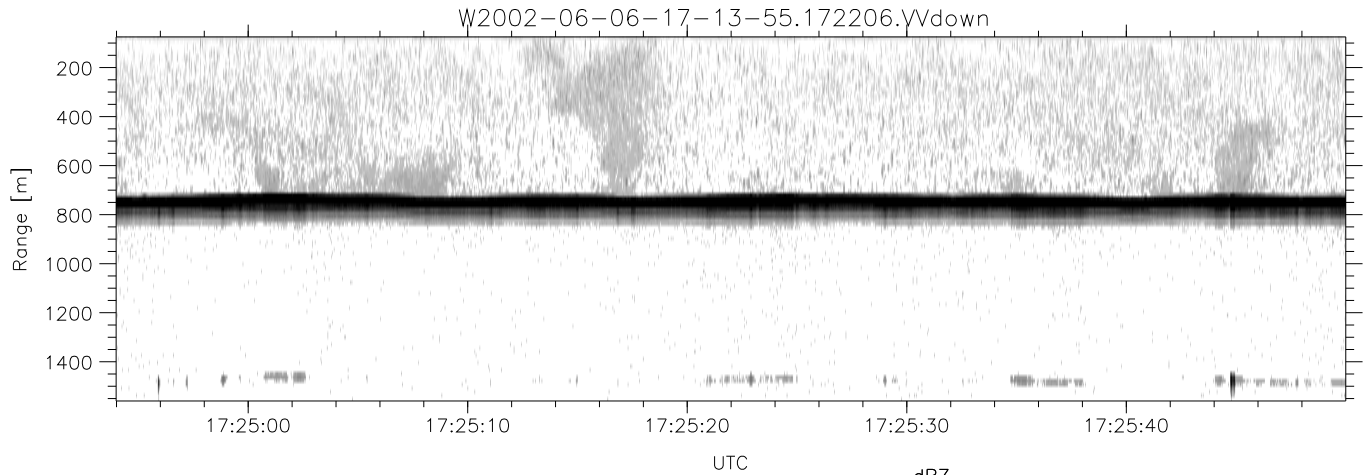


IHOP 2002 (dual-antenna config, modes 1,3,4,7) Data (cal: 49.0,50.0)

W2002-06-06-17-13-55 - PPMAG4
 IRIG:1,UTC: 17:13:54.93 to 18:18:46.62, Dur: 3892s
 TimeLngth: 3891.68s, TimeInt: 28ms (34.5pps)
 TimeCor=-13.0s, DSPDif(mn,min,mx):28,28,322
 PPS(min,max,std): 25,36,2.18
 Prof: 640 to 134897, NumProf(t/r): 134257/17069
 ProcTime/Recs: 17:22:06-17:30:19/17069-34137
 MxAcQtime: 33ms; DRate: 193.1KB/s; Flags: 0, 0, 0
 Pulse: 275ns, IFfilt: 5.0MHz; ppPol: HH HV VV
 TxPol: HHVV, PRF: 20 10 20 10 kHz
 Range: Delay 75m, Spacing 15m, Gates 100
 Ave. Pulses: 84, Rng/Prof Aspect@90m/s: 5.7

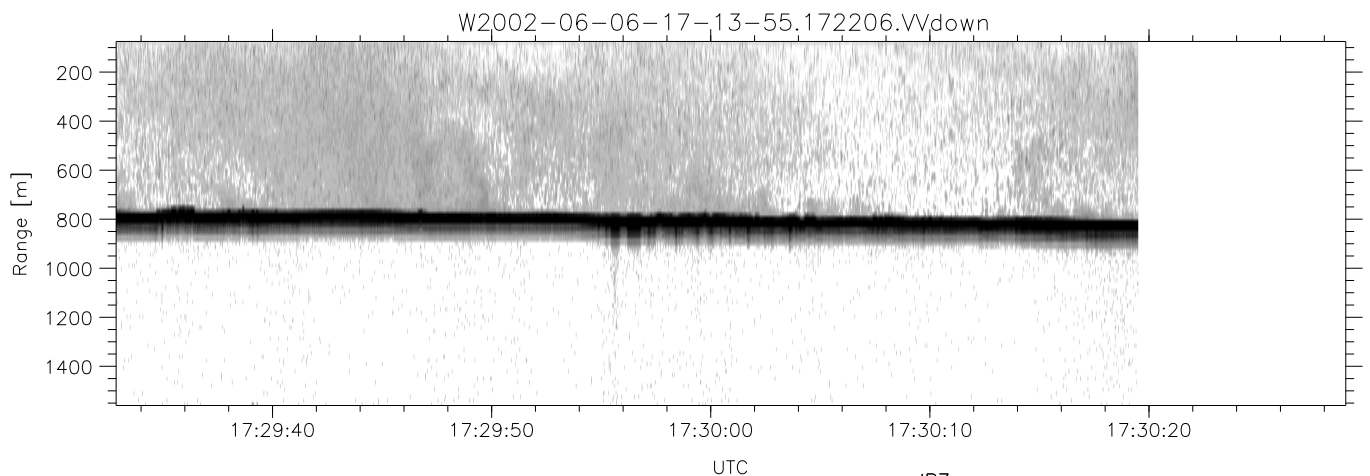
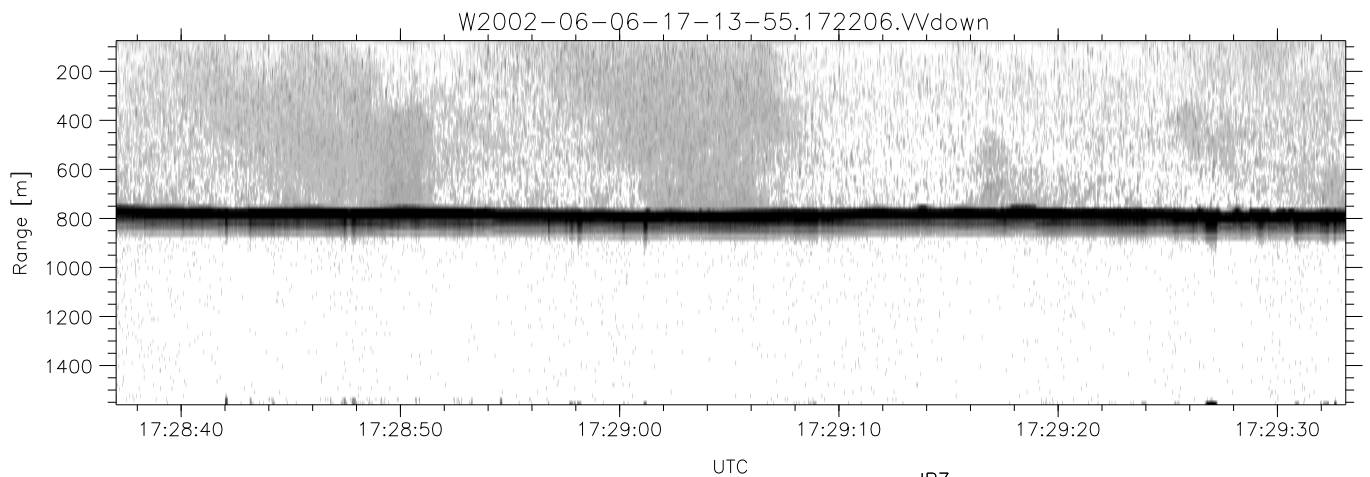
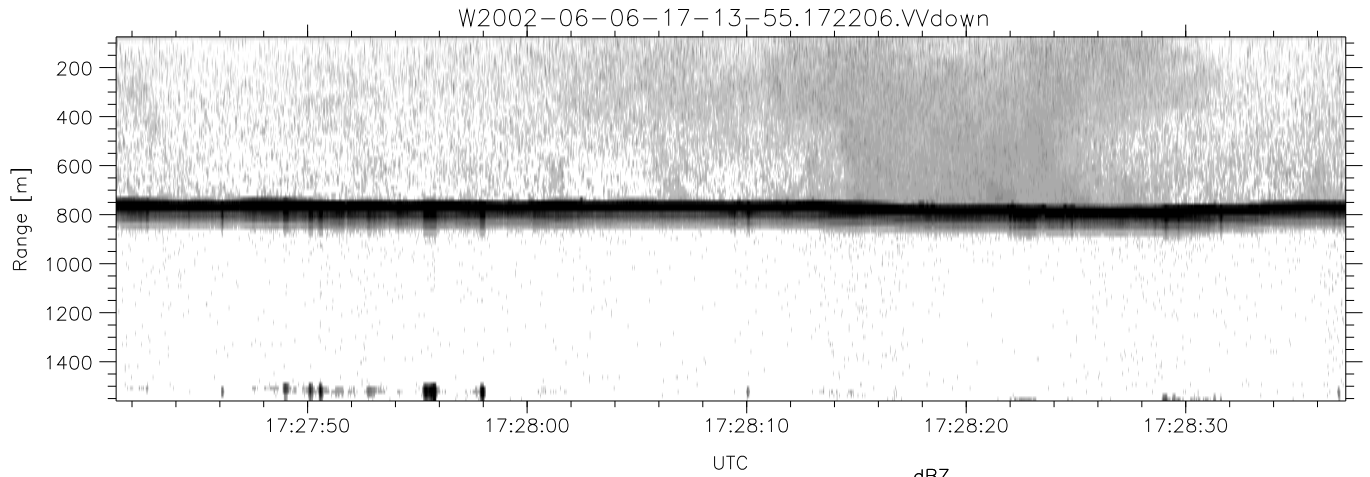
	Min	Max	Mean	Std	Varc%
hhN(dB)	-67.34	-64.17	-65.72	-75.78	9.9
vvN(dB)	-67.98	-64.15	-66.06	-76.00	10.2
hhL(dB)	-12.96	-6.57	-8.05	-17.32	11.8
vvL(dB)	-33.44	-14.83	-23.95	-26.28	58.4
ppN(m/s)	-12.27	12.31	0.10	4.11	
ppT(m/s)	-96.90	97.23	0.80	32.50	
hh/vv(dB)	-NaN	49.74	15.32	34.47	8238
vh/hh(dB)	-NaN	-29.91	-33.62	-35.97	58.1
hv/vv(dB)	-NaN	-33.11	-57.26	-46.16	1287
hnjmp(dB)	-1.96	2.46	0.18	-8.44	13.7
vnjmp(dB)	-2.13	2.32	0.16	-8.32	14.2



IHOP 2002 (dual-antenna config, modes 1,3,4,7) Data (cal: 49.0,50.0)

W2002-06-06-17-13-55 - PPMAG4
 IRIG:1,UTC: 17:13:54.93 to 18:18:46.62, Dur: 3892s
 TimeLngth: 3891.68s, TimeInt: 28ms (34.5pps)
 TimeCor=-13.0s, DSPDif(mn,min,mx):28,28,322
 PPS(min,max,std): 25,36,2.18
 Prof: 640 to 134897, NumProf(t/r): 134257/17069
 ProcTime/Recs: 17:22:06-17:30:19/17069-34137
 MxACQtime: 33ms; DRate: 193.1KB/s; Flags: 0, 0, 0
 Pulse: 275ns, IFilt: 5.0MHz; ppPol: HH HV VV
 TxPol: HHVV, PRF: 20 10 20 10 kHz
 Range: Delay 75m, Spacing 15m, Gates 100
 Ave. Pulses: 84, Rng/Prof Aspect@90m/s: 5.7

	Min	Max	Mean	Std	Varc%
hhN(dB)	-67.34	-64.17	-65.72	-75.78	9.9
vvN(dB)	-67.98	-64.15	-66.06	-76.00	10.2
hhL(dB)	-12.96	-6.57	-8.05	-17.32	11.8
vvL(dB)	-33.44	-14.83	-23.95	-26.28	58.4
ppN(m/s)	-12.27	12.31	0.10	4.11	
ppT(m/s)	-96.90	97.23	0.80	32.50	
hh/vv(dB)	-NaN	49.74	15.32	34.47	8238
vh/hh(dB)	-NaN	-29.91	-33.62	-35.97	58.1
hv/vv(dB)	-NaN	-33.11	-57.26	-46.16	1287
hh_jmp(dB)	-1.96	2.46	0.18	-8.44	13.7
vv_jmp(dB)	-2.13	2.32	0.16	-8.32	14.2



IHOP 2002 (dual-antenna config, modes 1,3,4,7) Data (cal: 49.0,50.0)

W2002-06-06-17-13-55 - PPMAG4
 IRIG:1,UTC: 17:13:54.93 to 18:18:46.62, Dur: 3892s
 TimeLngth: 3891.68s, TimeInt: 28ms (34.5pps)
 TimeCor=-13.0s, DSPDif(mn,min,mx):28,28,322
 PPS(min,max,std): 25,36,2.18
 Prof: 640 to 134897, NumProf(t/r): 134257/17069
 ProcTime/Recs: 17:22:06-17:30:19/17069-34137
 MxACQtime: 33ms; DRate: 193.1KB/s; Flags: 0, 0, 0
 Pulse: 275ns, IFfilt: 5.0MHz; ppPol: HH HV VV
 TxPol: HHVV, PRF: 20 10 20 10 kHz
 Range: Delay 75m, Spacing 15m, Gates 100
 Ave. Pulses: 84, Rng/Prof Aspect@90m/s: 5.7

	Min	Max	Mean	Std	Varc%
hhN(dB)	-67.34	-64.17	-65.72	-75.78	9.9
vvN(dB)	-67.98	-64.15	-66.06	-76.00	10.2
hhL(dB)	-12.96	-6.57	-8.05	-17.32	11.8
vvL(dB)	-33.44	-14.83	-23.95	-26.28	58.4
ppN(m/s)	-12.27	12.31	0.10	4.11	
ppT(m/s)	-96.90	97.23	0.80	32.50	
hh/vv(dB)	-NaN	49.74	15.32	34.47	8238
vh/hh(dB)	-NaN	-29.91	-33.62	-35.97	58.1
hv/vv(dB)	-NaN	-33.11	-57.26	-46.16	1287
hnjmp(dB)	-1.96	2.46	0.18	-8.44	13.7
vnjmp(dB)	-2.13	2.32	0.16	-8.32	14.2