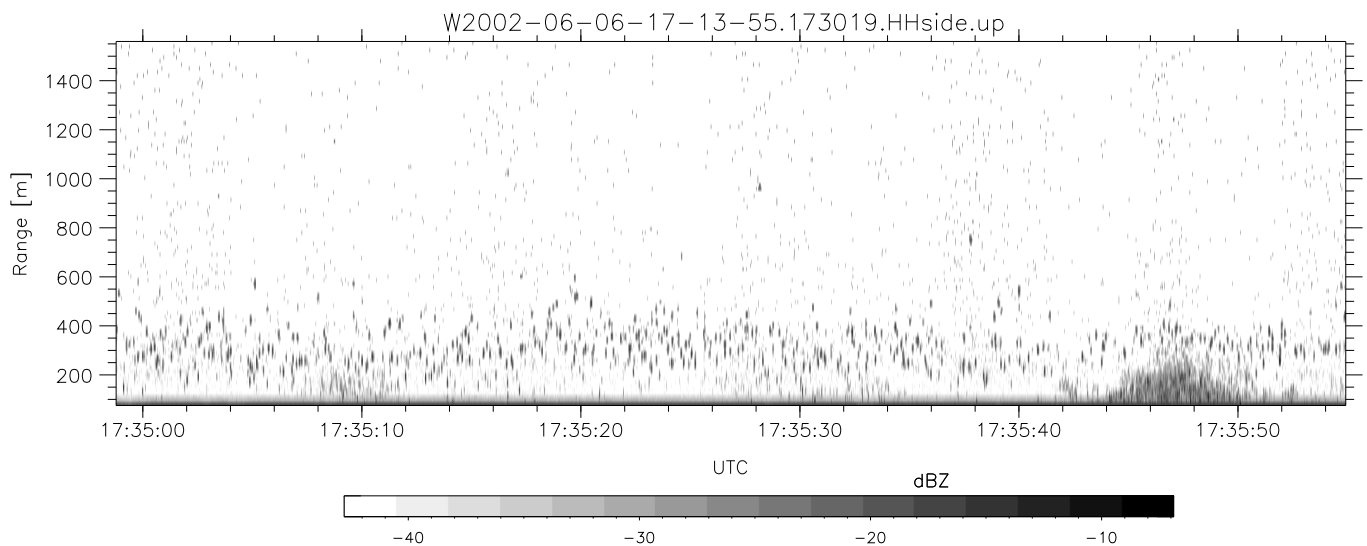
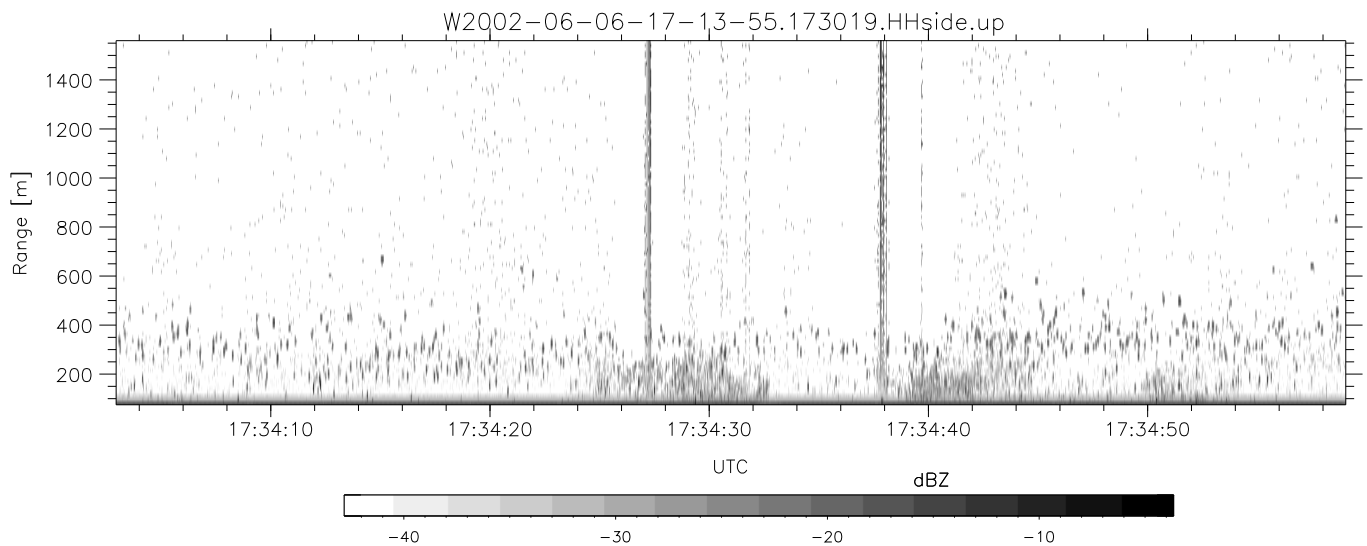
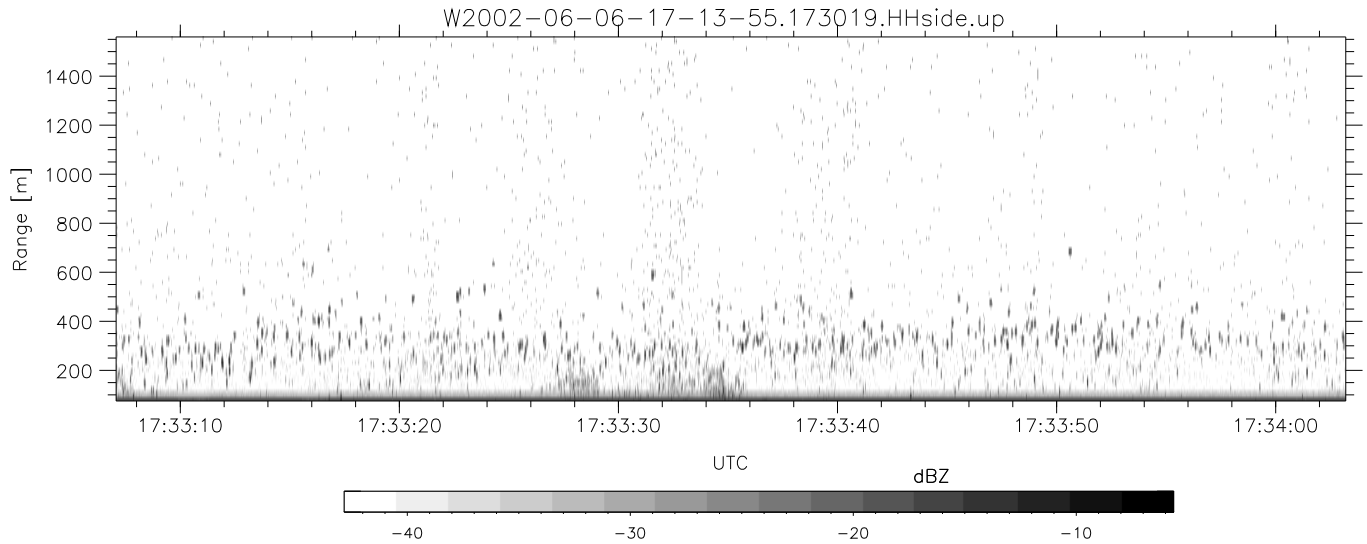


IHOP 2002 (dual-antenna config, modes 1,3,4,7) Data (cal: 49.0,50.0)

W2002-06-06-17-13-55 - PPMAG4
 IRIG:1,UTC: 17:13:54.93 to 18:18:46.62, Dur: 3892s
 TimeLngth: 3891.68s, TimeInt: 28ms (34.5pps)
 TimeCor=-13.0s, DSPDif(mn,min,mx):28,28,310
 PPS(min,max,std): 25,36,2.14
 Prof: 640 to 134897, NumProf(t/r): 134257/17069
 ProcTime/Recs: 17:30:19-17:38:32/34138-51206
 MxACQtime: 33ms; DRate: 193.1KB/s; Flags: 0, 0, 0
 Pulse: 275ns, IFfilt: 5.0MHz; ppPol: HH HV VV
 TxPol: HHVV, PRF: 20 10 20 10 kHz
 Range: Delay 75m, Spacing 15m, Gates 100
 Ave. Pulses: 84, Rng/Prof Aspect@90m/s: 5.7

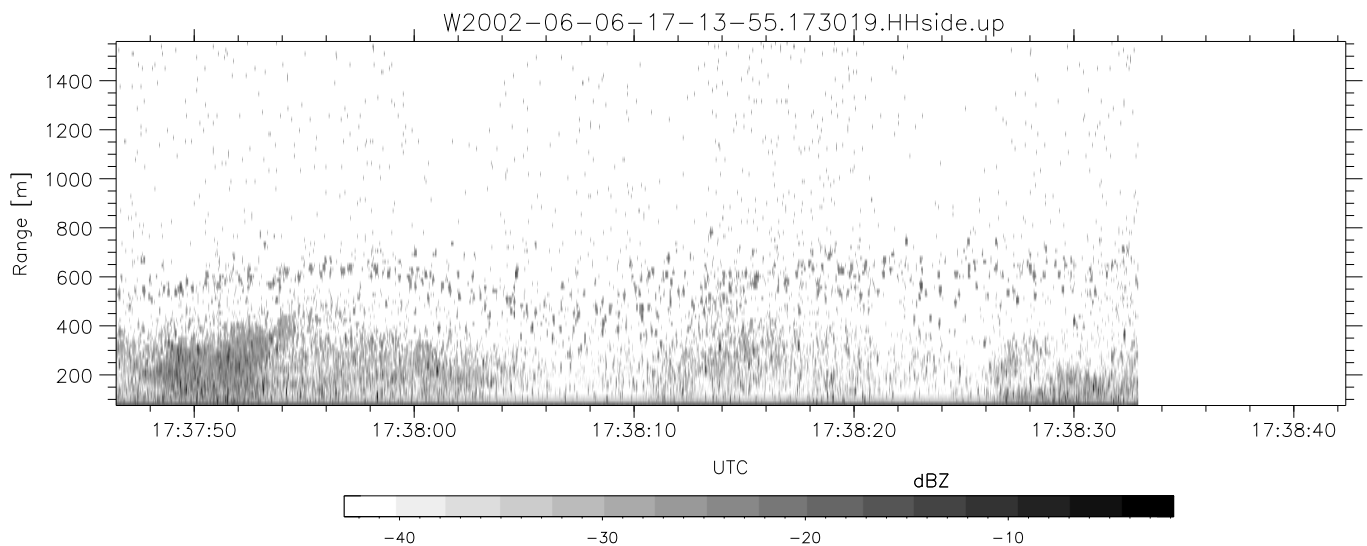
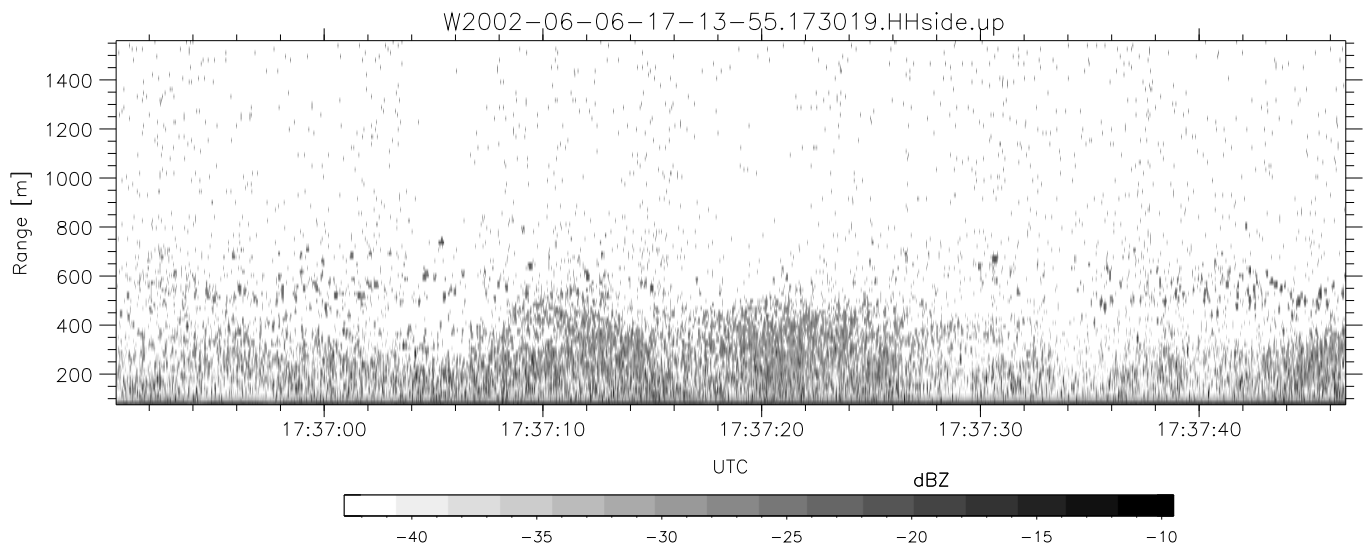
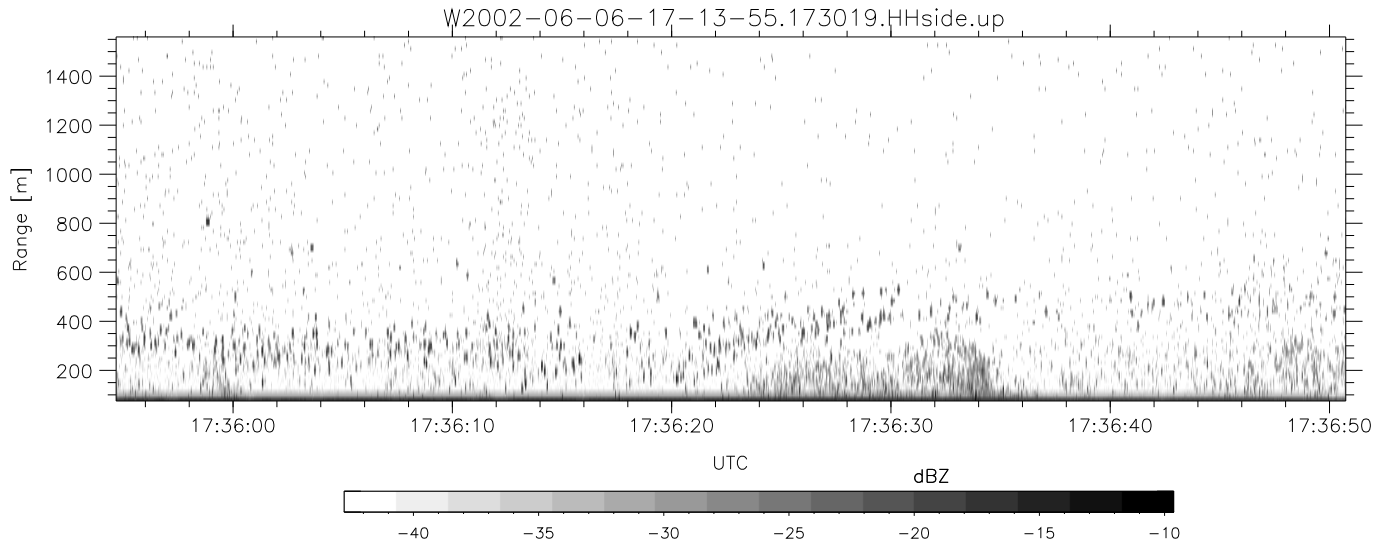
	Min	Max	Mean	Std	Varc%
hhN(dB)	-67.46	-62.10	-65.74	-75.53	10.5
vvN(dB)	-67.80	-61.87	-66.07	-75.63	11.1
hhL(dB)	-14.63	-6.61	-8.36	-15.75	18.2
vvL(dB)	-33.67	-12.73	-21.82	-21.48	108.
ppN(m/s)	-12.36	12.83	0.01	4.14	
ppT(m/s)	-97.68	101.39	0.09	32.74	
hh/vv(dB)	-NaN	56.85	-NaN	47.31	-128
vh/hh(dB)	-NaN	-28.40	-34.03	-34.87	82.5
hv/vv(dB)	-NaN	-28.53	-58.13	-45.25	1941
hnjmp(dB)	-2.13	2.26	-0.09	-8.69	13.8
vnjmp(dB)	-3.05	2.04	-0.08	-8.62	14.0



IHOP 2002 (dual-antenna config, modes 1,3,4,7) Data (cal: 49.0,50.0)

W2002-06-06-17-13-55 - PPMAG4
 IRIG:1,UTC: 17:13:54.93 to 18:18:46.62, Dur: 3892s
 TimeLngth: 3891.68s, TimeInt: 28ms (34.5pps)
 TimeCor=-13.0s, DSPDif(mn,min,mx):28,28,310
 PPS(min,max,std): 25,36,2.14
 Prof: 640 to 134897, NumProf(t/r): 134257/17069
 ProcTime/Recs: 17:30:19-17:38:32/34138-51206
 MxACQtime: 33ms; DRate: 193.1KB/s; Flags: 0, 0, 0
 Pulse: 275ns, IFfilt: 5.0MHz; ppPol: HH HV VV
 TxPol: HHVV, PRF: 20 10 20 10 kHz
 Range: Delay 75m, Spacing 15m, Gates 100
 Ave. Pulses: 84, Rng/Prof Aspect@90m/s: 5.7

	Min	Max	Mean	Std	Varc%
hhN(dB)	-67.46	-62.10	-65.74	-75.53	10.5
vvN(dB)	-67.80	-61.87	-66.07	-75.63	11.1
hhL(dB)	-14.63	-6.61	-8.36	-15.75	18.2
vvL(dB)	-33.67	-12.73	-21.82	-21.48	108.
ppN(m/s)	-12.36	12.83	0.01	4.14	
ppT(m/s)	-97.68	101.39	0.09	32.74	
hh/vv(dB)	-NaN	56.85	-NaN	47.31	-128
vh/hh(dB)	-NaN	-28.40	-34.03	-34.87	82.5
hv/vv(dB)	-NaN	-28.53	-58.13	-45.25	1941
hnjmp(dB)	-2.13	2.26	-0.09	-8.69	13.8
vnjmp(dB)	-3.05	2.04	-0.08	-8.62	14.0



IHOP 2002 (dual-antenna config, modes 1,3,4,7) Data (cal: 49.0,50.0)

W2002-06-06-17-13-55 - PPMAG4
 IRIG:1,UTC: 17:13:54.93 to 18:18:46.62, Dur: 3892s
 TimeLngth: 3891.68s, TimeInt: 28ms (34.5pps)
 TimeCor=-13.0s, DSPDif(mn,min,mx):28,28,310
 PPS(min,max,std): 25,36,2.14
 Prof: 640 to 134897, NumProf(t/r): 134257/17069
 ProcTime/Recs: 17:30:19-17:38:32/34138-51206
 MxACQtime: 33ms; DRate: 193.1KB/s; Flags: 0, 0, 0
 Pulse: 275ns, IFfilt: 5.0MHz; ppPol: HH HV VV
 TxPol: HHVV, PRF: 20 10 20 10 kHz
 Range: Delay 75m, Spacing 15m, Gates 100
 Ave. Pulses: 84, Rng/Prof Aspect@90m/s: 5.7

	Min	Max	Mean	Std	Varc%
hhN(dB)	-67.46	-62.10	-65.74	-75.53	10.5
vvN(dB)	-67.80	-61.87	-66.07	-75.63	11.1
hhL(dB)	-14.63	-6.61	-8.36	-15.75	18.2
vvL(dB)	-33.67	-12.73	-21.82	-21.48	108.
ppN(m/s)	-12.36	12.83	0.01	4.14	
ppT(m/s)	-97.68	101.39	0.09	32.74	
hh/vv(dB)	-NaN	56.85	-NaN	47.31	-128
vh/hh(dB)	-NaN	-28.40	-34.03	-34.87	82.5
hv/vv(dB)	-NaN	-28.53	-58.13	-45.25	1941
hnjmp(dB)	-2.13	2.26	-0.09	-8.69	13.8
vnjmp(dB)	-3.05	2.04	-0.08	-8.62	14.0