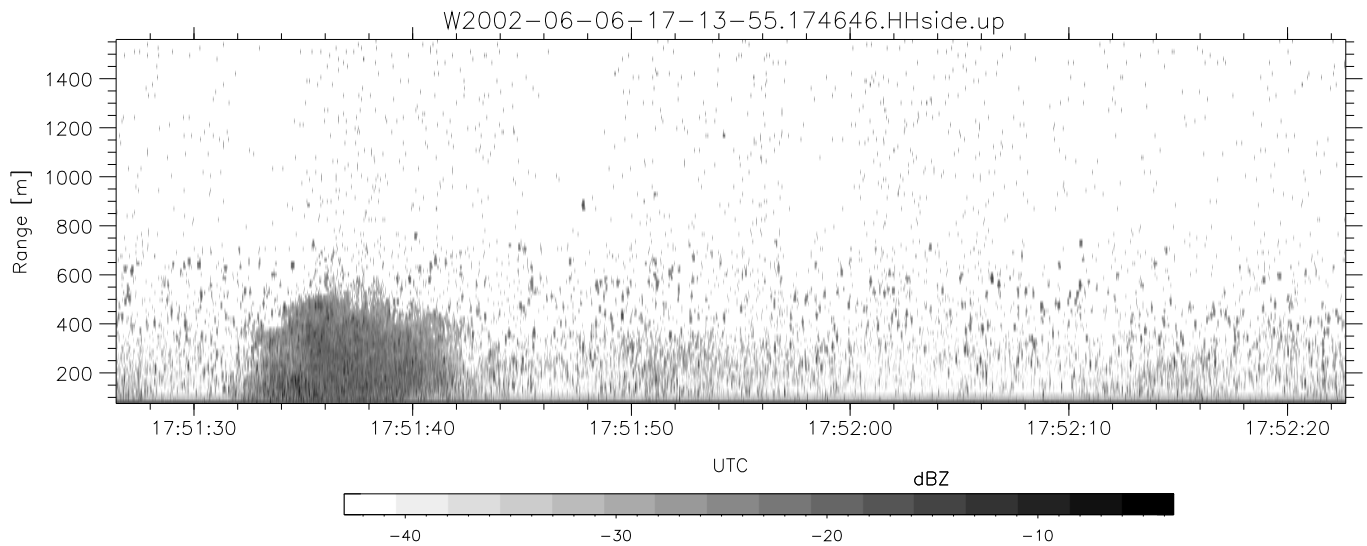
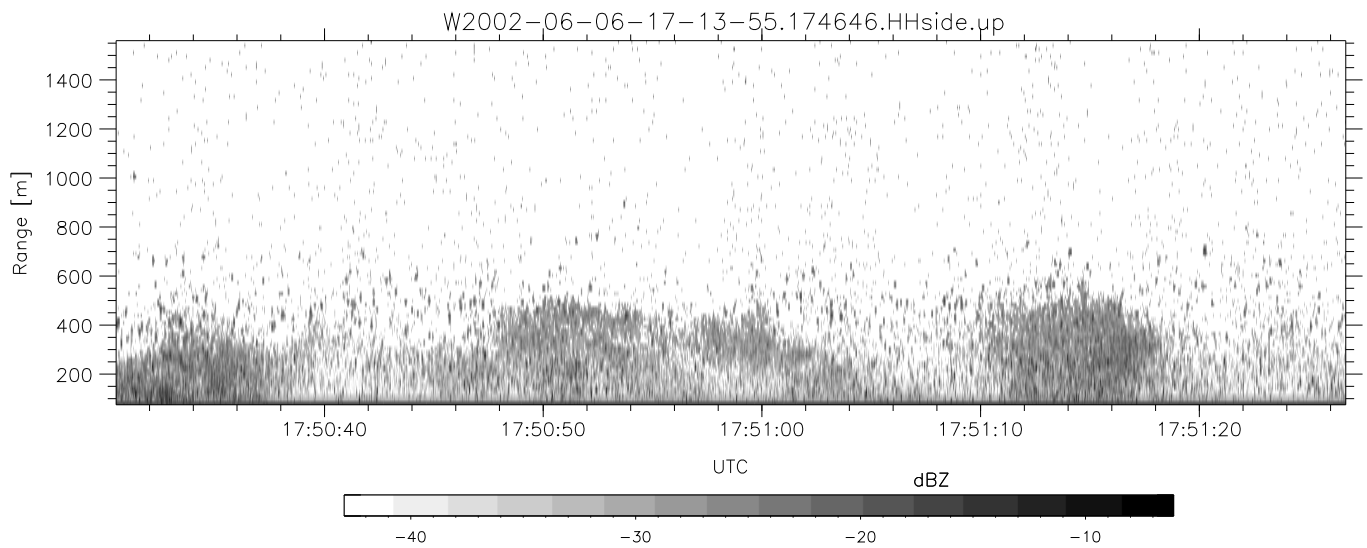
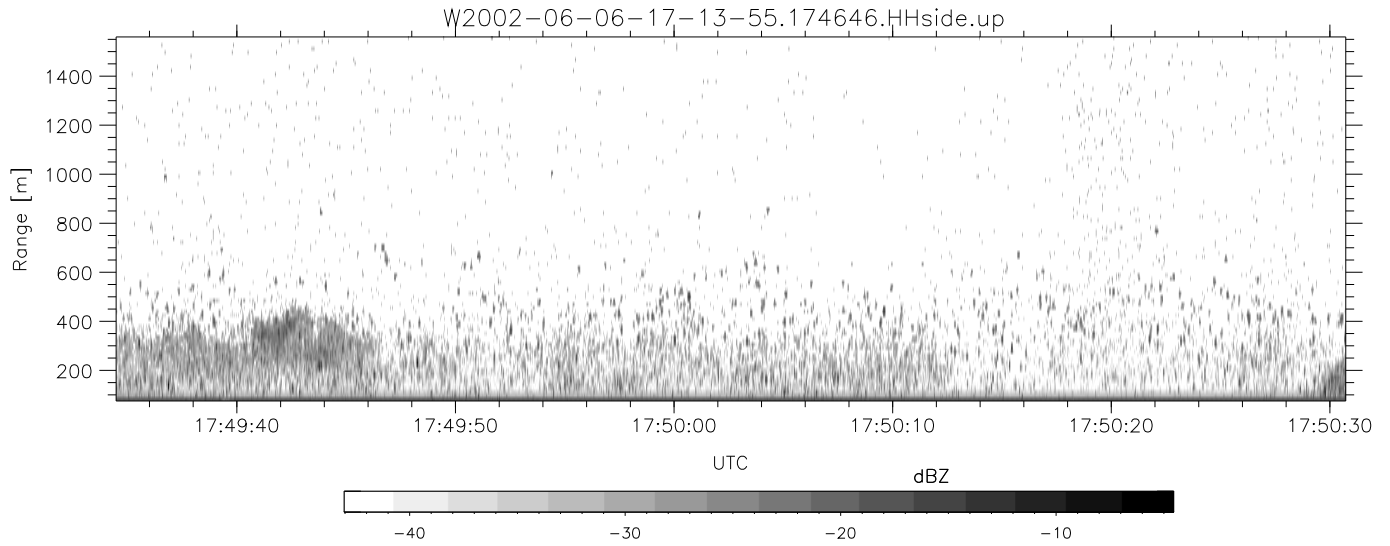


IHOP 2002 (dual-antenna config, modes 1,3,4,7) Data (cal: 49.0,50.0)

W2002-06-06-17-13-55 - PPMAG4
 IRIG:1,UTC: 17:13:54.93 to 18:18:46.62, Dur: 3892s
 TimeLngth: 3891.68s, TimeInt: 28ms (34.5pps)
 TimeCor=-13.0s, DSPDif(mn,min,mx):28,28,304
 PPS(min,max,std): 24,36,2.16
 Prof: 640 to 134897, NumProf(t/r): 134257/17069
 ProcTime/Recs: 17:46:46-17:55:00/68276-85344
 MxACQtime: 33ms; DRate: 193.1KB/s; Flags: 0, 0, 0
 Pulse: 275ns, IFfilt: 5.0MHz; ppPol: HH HV VV
 TxPol: HHVV, PRF: 20 10 20 10 kHz
 Range: Delay 75m, Spacing 15m, Gates 100
 Ave. Pulses: 84, Rng/Prof Aspect@90m/s: 5.7

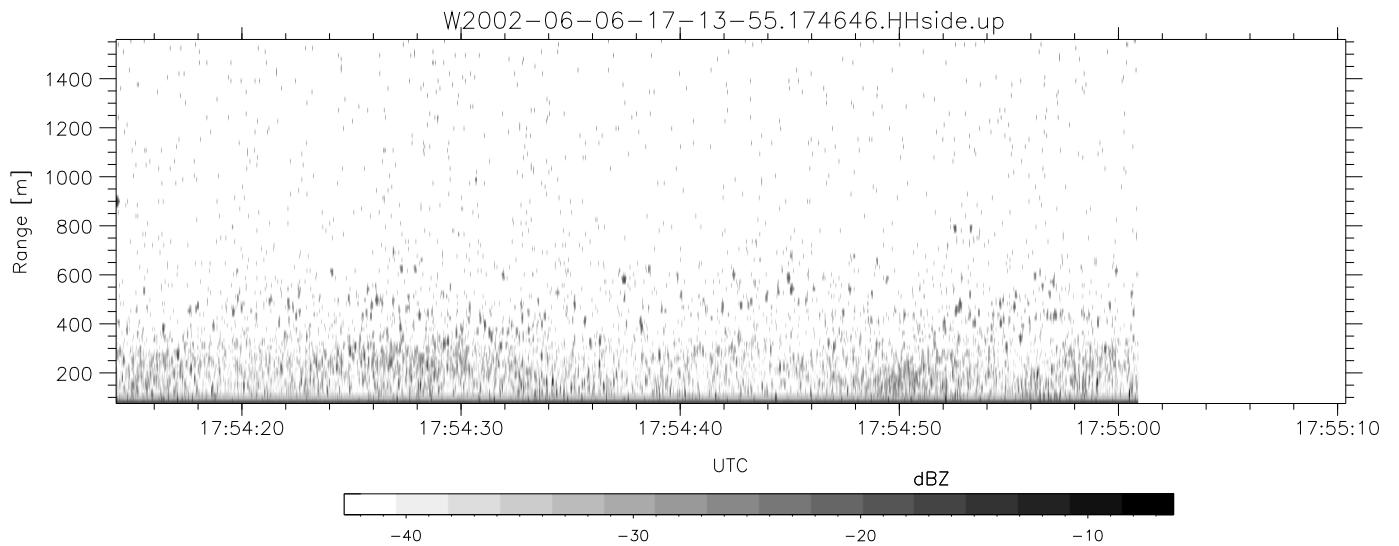
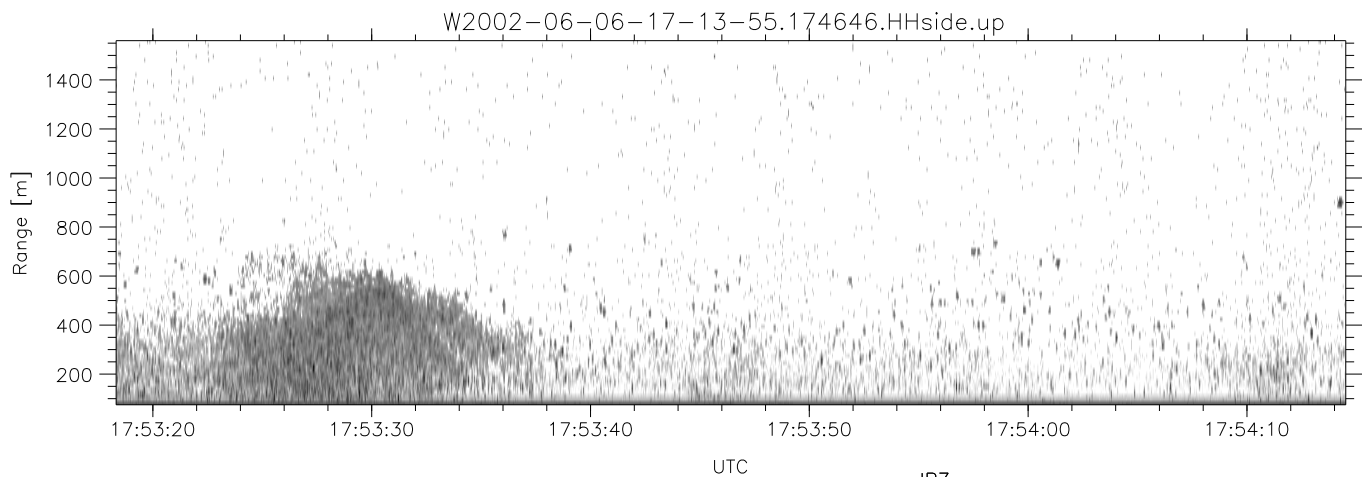
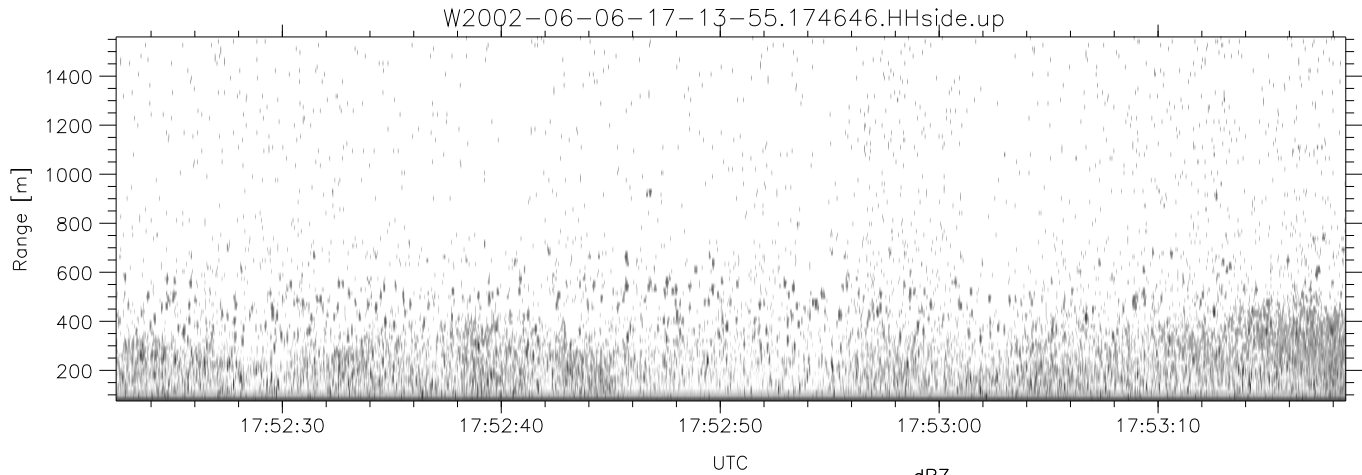
	Min	Max	Mean	Std	Varc%
hhN(dB)	-67.60	-64.40	-65.80	-75.94	9.7
vvN(dB)	-67.91	-64.52	-66.14	-76.14	10.0
hhL(dB)	-12.15	-7.51	-8.73	-19.07	9.2
vvL(dB)	-33.32	-12.53	-16.46	-19.85	45.8
ppN(m/s)	-12.54	12.54	-0.06	4.13	
ppT(m/s)	-99.08	99.04	-0.47	32.60	
hh/vv(dB)	-NaN	42.08	14.40	26.14	1492
vh/hh(dB)	-NaN	-29.65	-35.32	-37.17	65.2
hv/vv(dB)	-NaN	-34.24	-55.12	-47.07	638.
hnjmp(dB)	-2.34	1.94	-0.08	-8.72	13.7
vnjmp(dB)	-2.19	2.16	-0.08	-8.64	13.9



IHOP 2002 (dual-antenna config, modes 1,3,4,7) Data (cal: 49.0,50.0)

W2002-06-06-17-13-55 - PPMAG4
 IRIG:1,UTC: 17:13:54.93 to 18:18:46.62, Dur: 3892s
 TimeLngth: 3891.68s, TimeInt: 28ms (34.5pps)
 TimeCor=-13.0s, DSPDif(mn,min,mx):28,28,304
 PPS(min,max,std): 24,36,2.16
 Prof: 640 to 134897, NumProf(t/r): 134257/17069
 ProcTime/Recs: 17:46:46-17:55:00/68276-85344
 MxACQtime: 33ms; DRate: 193.1KB/s; Flags: 0, 0, 0
 Pulse: 275ns, IFfilt: 5.0MHz; ppPol: HH HV VV
 TxPol: HHVV, PRF: 20 10 20 10 kHz
 Range: Delay 75m, Spacing 15m, Gates 100
 Ave. Pulses: 84, Rng/Prof Aspect@90m/s: 5.7

	Min	Max	Mean	Std	Varc%
hhN (dB)	-67.60	-64.40	-65.80	-75.94	9.7
vvN (dB)	-67.91	-64.52	-66.14	-76.14	10.0
hhL (dB)	-12.15	-7.51	-8.73	-19.07	9.2
vvL (dB)	-33.32	-12.53	-16.46	-19.85	45.8
ppN (m/s)	-12.54	12.54	-0.06	4.13	
ppT (m/s)	-99.08	99.04	-0.47	32.60	
hh/vv (dB)	-NaN	42.08	14.40	26.14	1492
vh/hh (dB)	-NaN	-29.65	-35.32	-37.17	65.2
hv/vv (dB)	-NaN	-34.24	-55.12	-47.07	638.
hh_jmp (dB)	-2.34	1.94	-0.08	-8.72	13.7
vv_jmp (dB)	-2.19	2.16	-0.08	-8.64	13.9



IHOP 2002 (dual-antenna config, modes 1,3,4,7) Data (cal: 49.0,50.0)

W2002-06-06-17-13-55 - PPMAG4
 IRIG:1,UTC: 17:13:54.93 to 18:18:46.62, Dur: 3892s
 TimeLngth: 3891.68s, TimeInt: 28ms (34.5pps)
 TimeCor=-13.0s, DSPDif(mn,min,mx):28,28,304
 PPS(min,max,std): 24,36,2.16
 Prof: 640 to 134897, NumProf(t/r): 134257/17069
 ProcTime/Recs: 17:46:46-17:55:00/68276-85344
 MxACQtime: 33ms; DRate: 193.1KB/s; Flags: 0, 0, 0
 Pulse: 275ns, IFfilt: 5.0MHz; ppPol: HH HV VV
 TxPol: HHVV, PRF: 20 10 20 10 kHz
 Range: Delay 75m, Spacing 15m, Gates 100
 Ave. Pulses: 84, Rng/Prof Aspect@90m/s: 5.7

	Min	Max	Mean	Std	Varc%
hhN(dB)	-67.60	-64.40	-65.80	-75.94	9.7
vvN(dB)	-67.91	-64.52	-66.14	-76.14	10.0
hhL(dB)	-12.15	-7.51	-8.73	-19.07	9.2
vvL(dB)	-33.32	-12.53	-16.46	-19.85	45.8
ppN(m/s)	-12.54	12.54	-0.06	4.13	
ppT(m/s)	-99.08	99.04	-0.47	32.60	
hh/vv(dB)	-NaN	42.08	14.40	26.14	1492
vh/hh(dB)	-NaN	-29.65	-35.32	-37.17	65.2
hv/vv(dB)	-NaN	-34.24	-55.12	-47.07	638.
hnjmp(dB)	-2.34	1.94	-0.08	-8.72	13.7
vnjmp(dB)	-2.19	2.16	-0.08	-8.64	13.9