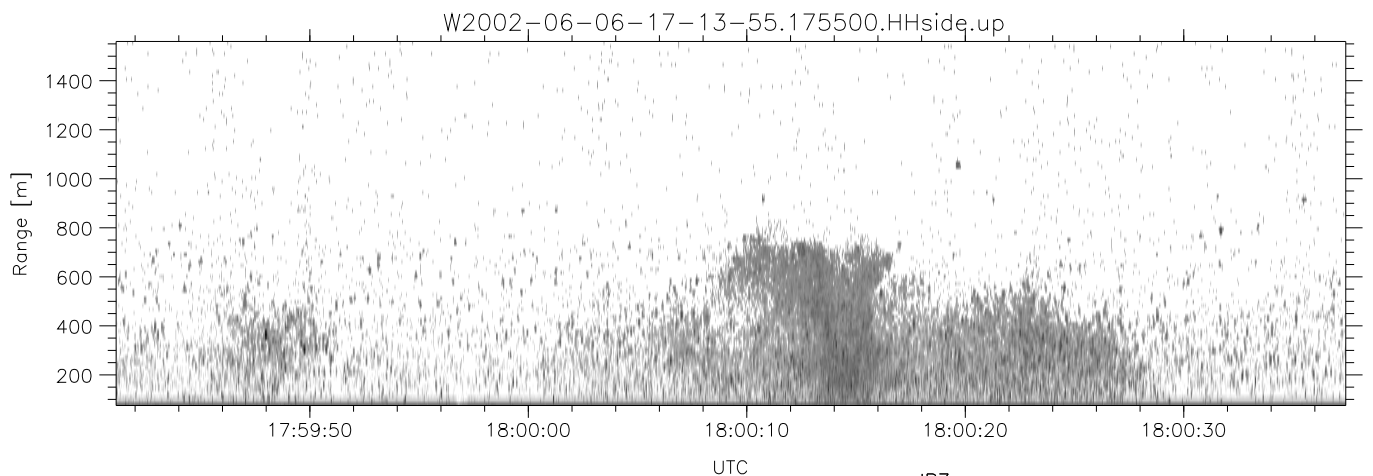
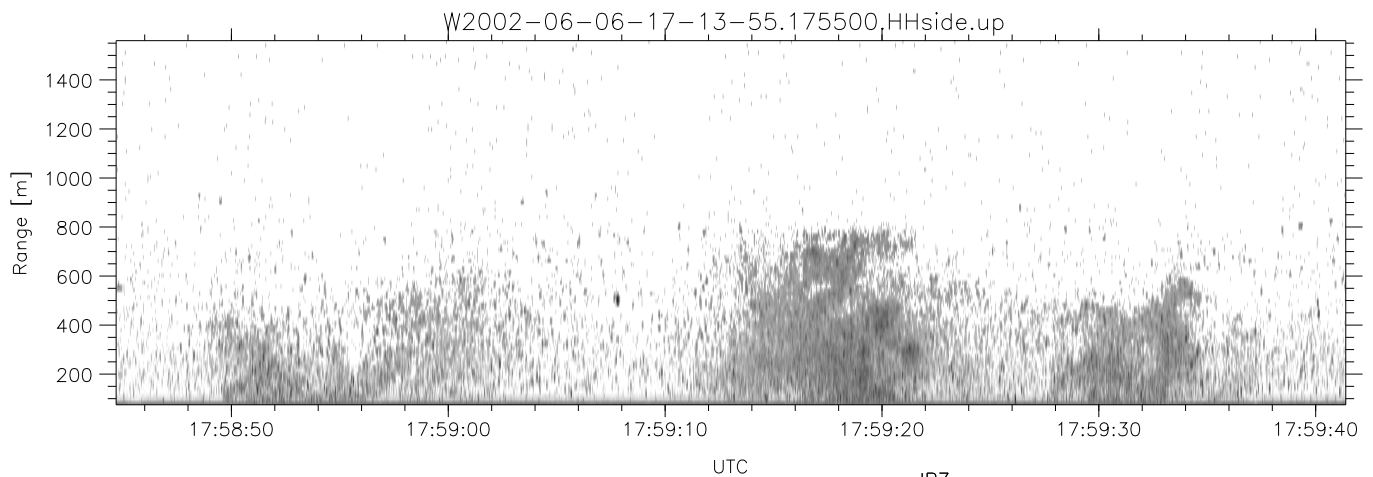
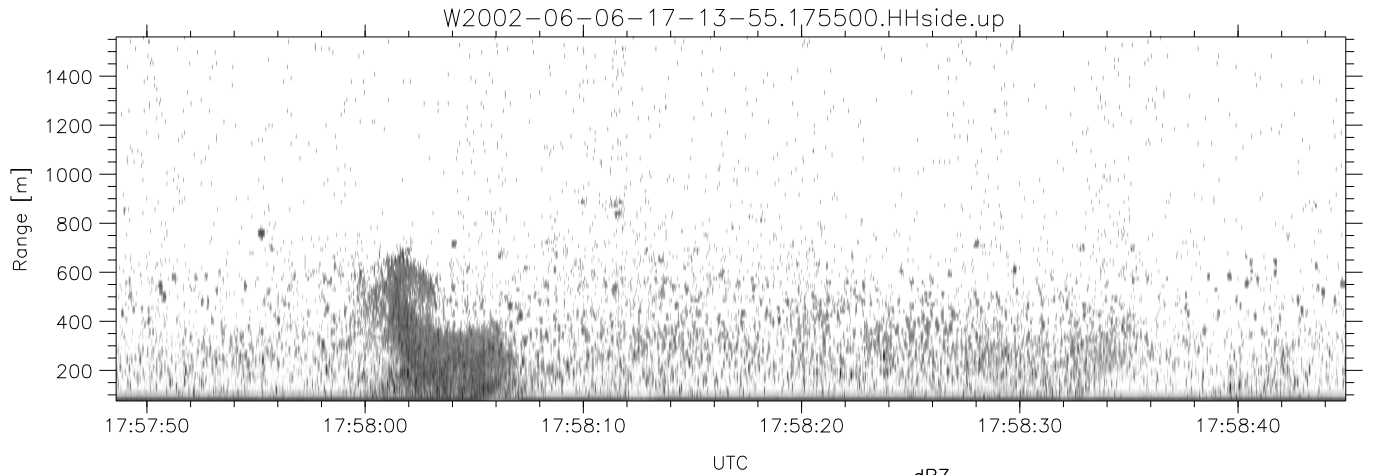


IHOP 2002 (dual-antenna config, modes 1,3,4,7) Data (cal: 49.0,50.0)

W2002-06-06-17-13-55 - PPMAG4
 IRIG:1,UTC: 17:13:54.93 to 18:18:46.62, Dur: 3892s
 TimeLngth: 3891.68s, TimeInt: 28ms (34.5pps)
 TimeCor=-13.0s, DSPDif(mn,min,mx):28,28,352
 PPS(min,max,std): 24,36,2.18
 Prof: 640 to 134897, NumProf(t/r): 134257/17069
 ProcTime/Recs: 17:55:00-18:03:16/85345-102413
 MxACQtime: 33ms; DRate: 193.1KB/s; Flags: 0, 0, 0
 Pulse: 275ns, IFfilt: 5.0MHz; ppPol: HH HV VV
 TxPol: HHVV, PRF: 20 10 20 10 kHz
 Range: Delay 75m, Spacing 15m, Gates 100
 Ave. Pulses: 84, Rng/Prof Aspect@90m/s: 5.7

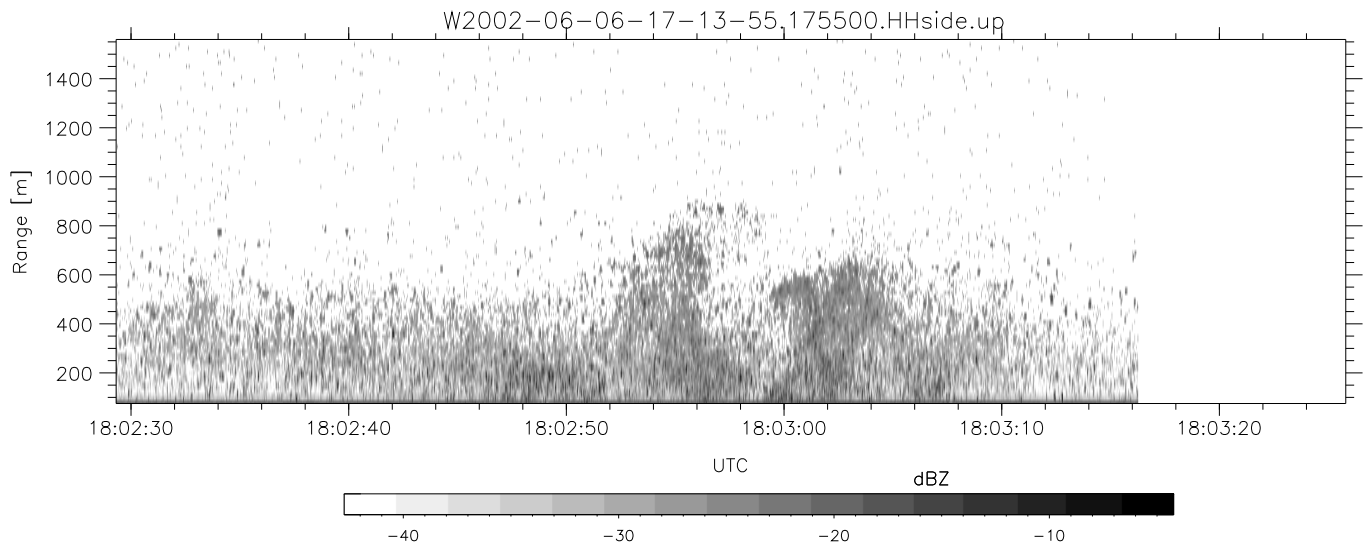
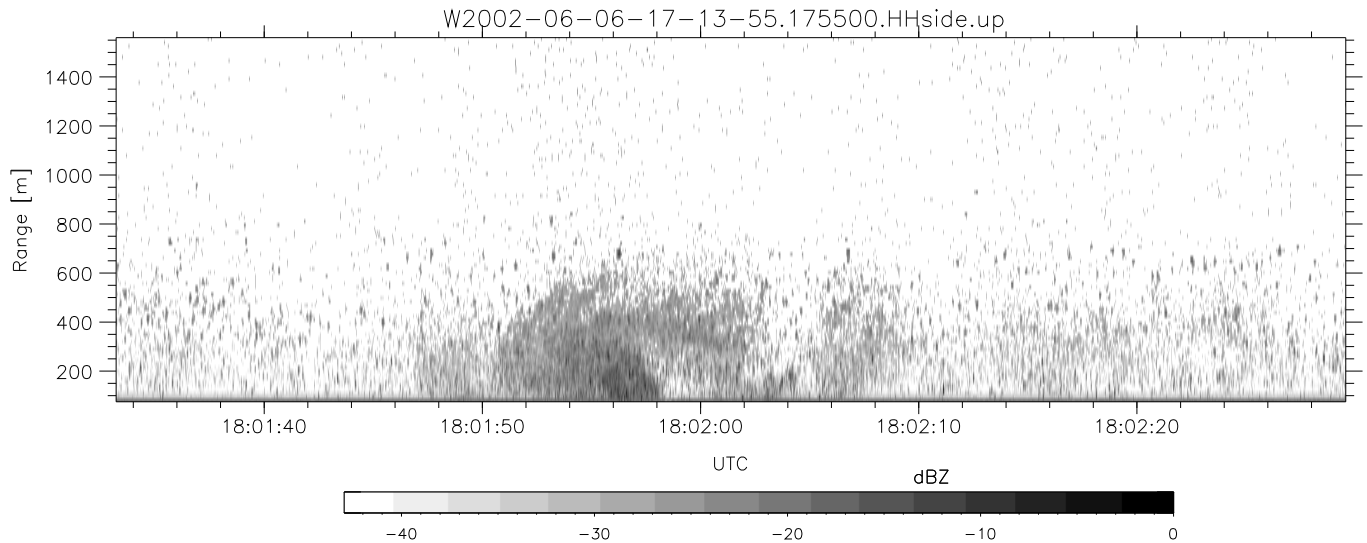
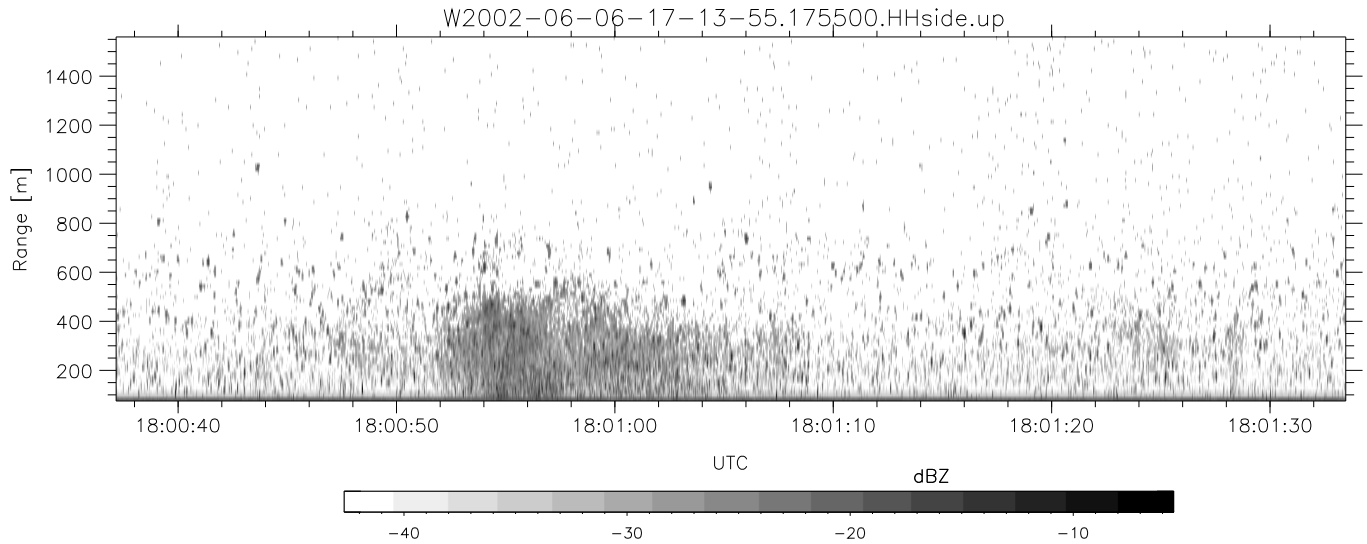
	Min	Max	Mean	Std	Varc%
hhN(dB)	-67.50	-63.96	-65.83	-75.87	9.9
vvN(dB)	-68.04	-64.57	-66.15	-76.15	10.0
hhL(dB)	-22.27	-7.98	-9.92	-16.16	23.8
vvL(dB)	-30.76	-12.28	-16.50	-20.92	36.2
ppN(m/s)	-12.47	12.63	-0.07	4.11	
ppT(m/s)	-98.49	99.74	-0.52	32.46	
hh/vv(dB)	-NaN	51.18	15.45	30.62	3290
vh/hh(dB)	-NaN	-28.64	-35.77	-35.96	95.8
hv/vv(dB)	-NaN	-34.63	-53.54	-46.76	476.
hnjmp(dB)	-2.44	2.58	0.17	-8.42	13.8
vnjmp(dB)	-2.46	2.39	0.15	-8.38	14.0



IHOP 2002 (dual-antenna config, modes 1,3,4,7) Data (cal: 49.0,50.0)

W2002-06-06-17-13-55 - PPMAG4
 IRIG:1,UTC: 17:13:54.93 to 18:18:46.62, Dur: 3892s
 TimeLngth: 3891.68s, TimeInt: 28ms (34.5pps)
 TimeCor=-13.0s, DSPDif(mn,min,mx):28,28,352
 PPS(min,max,std): 24,36,2.18
 Prof: 640 to 134897, NumProf(t/r): 134257/17069
 ProcTime/Recs: 17:55:00-18:03:16/85345-102413
 MxACQtime: 33ms; DRate: 193.1KB/s; Flags: 0, 0, 0
 Pulse: 275ns, IFfilt: 5.0MHz; ppPol: HH HV VV
 TxPol: HHVV, PRF: 20 10 20 10 kHz
 Range: Delay 75m, Spacing 15m, Gates 100
 Ave. Pulses: 84, Rng/Prof Aspect@90m/s: 5.7

	Min	Max	Mean	Std	Varc%
hhN(dB)	-67.50	-63.96	-65.83	-75.87	9.9
vvN(dB)	-68.04	-64.57	-66.15	-76.15	10.0
hhL(dB)	-22.27	-7.98	-9.92	-16.16	23.8
vvL(dB)	-30.76	-12.28	-16.50	-20.92	36.2
ppN(m/s)	-12.47	12.63	-0.07	4.11	
ppT(m/s)	-98.49	99.74	-0.52	32.46	
hh/vv(dB)	-NaN	51.18	15.45	30.62	3290
vh/hh(dB)	-NaN	-28.64	-35.77	-35.96	95.8
hv/vv(dB)	-NaN	-34.63	-53.54	-46.76	476.
hnjmp(dB)	-2.44	2.58	0.17	-8.42	13.8
vnjmp(dB)	-2.46	2.39	0.15	-8.38	14.0



IHOP 2002 (dual-antenna config, modes 1,3,4,7) Data (cal: 49.0,50.0)

W2002-06-06-17-13-55 - PPMAG4
 IRIG:1,UTC: 17:13:54.93 to 18:18:46.62, Dur: 3892s
 TimeLngth: 3891.68s, TimeInt: 28ms (34.5pps)
 TimeCor=-13.0s, DSPDif(mn,min,mx):28,28,352
 PPS(min,max,std): 24,36,2.18
 Prof: 640 to 134897, NumProf(t/r): 134257/17069
 ProcTime/Recs: 17:55:00-18:03:16/85345-102413
 MxACQtime: 33ms; DRate: 193.1KB/s; Flags: 0, 0, 0
 Pulse: 275ns, IFfilt: 5.0MHz; ppPol: HH HV VV
 TxPol: HHVV, PRF: 20 10 20 10 kHz
 Range: Delay 75m, Spacing 15m, Gates 100
 Ave. Pulses: 84, Rng/Prof Aspect@90m/s: 5.7

	Min	Max	Mean	Std	Varc%
hhN(dB)	-67.50	-63.96	-65.83	-75.87	9.9
vvN(dB)	-68.04	-64.57	-66.15	-76.15	10.0
hhL(dB)	-22.27	-7.98	-9.92	-16.16	23.8
vvL(dB)	-30.76	-12.28	-16.50	-20.92	36.2
ppN(m/s)	-12.47	12.63	-0.07	4.11	
ppT(m/s)	-98.49	99.74	-0.52	32.46	
hh/vv(dB)	-NaN	51.18	15.45	30.62	3290
vh/hh(dB)	-NaN	-28.64	-35.77	-35.96	95.8
hv/vv(dB)	-NaN	-34.63	-53.54	-46.76	476.
hnjmp(dB)	-2.44	2.58	0.17	-8.42	13.8
vnjmp(dB)	-2.46	2.39	0.15	-8.38	14.0