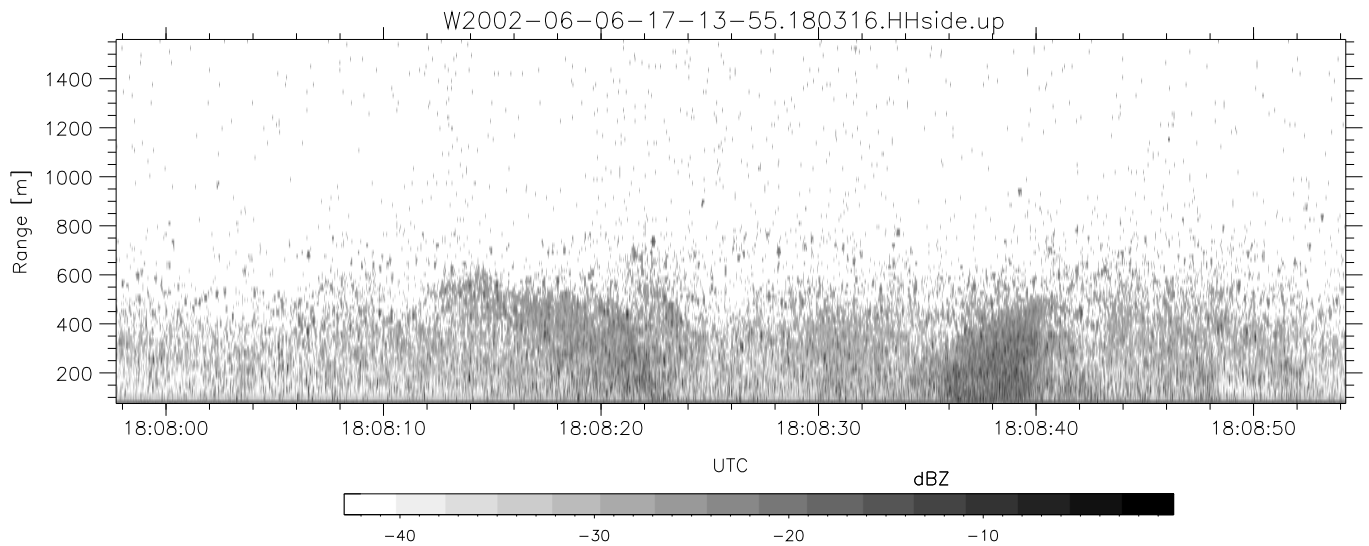
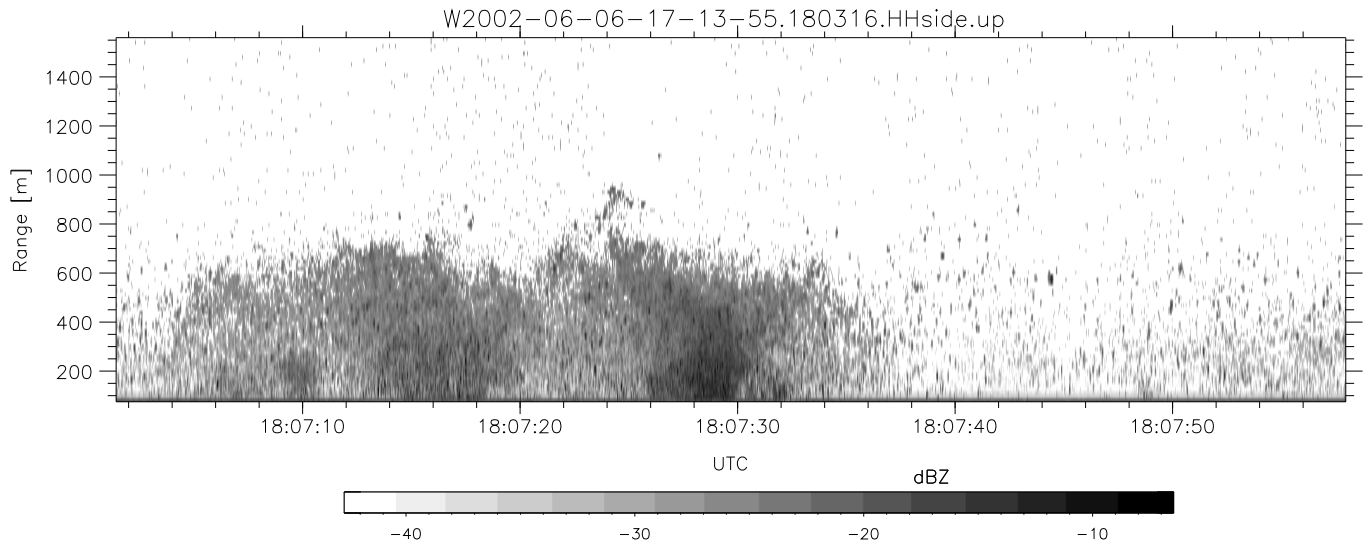
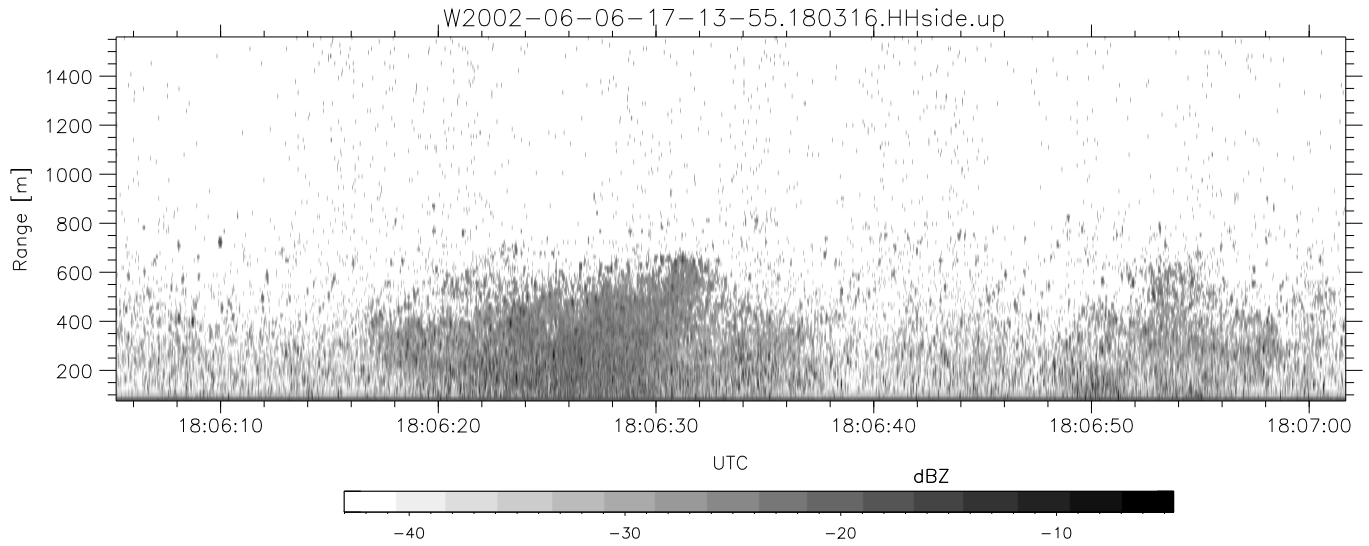


IHOP 2002 (dual-antenna config, modes 1,3,4,7) Data (cal: 49.0,50.0)

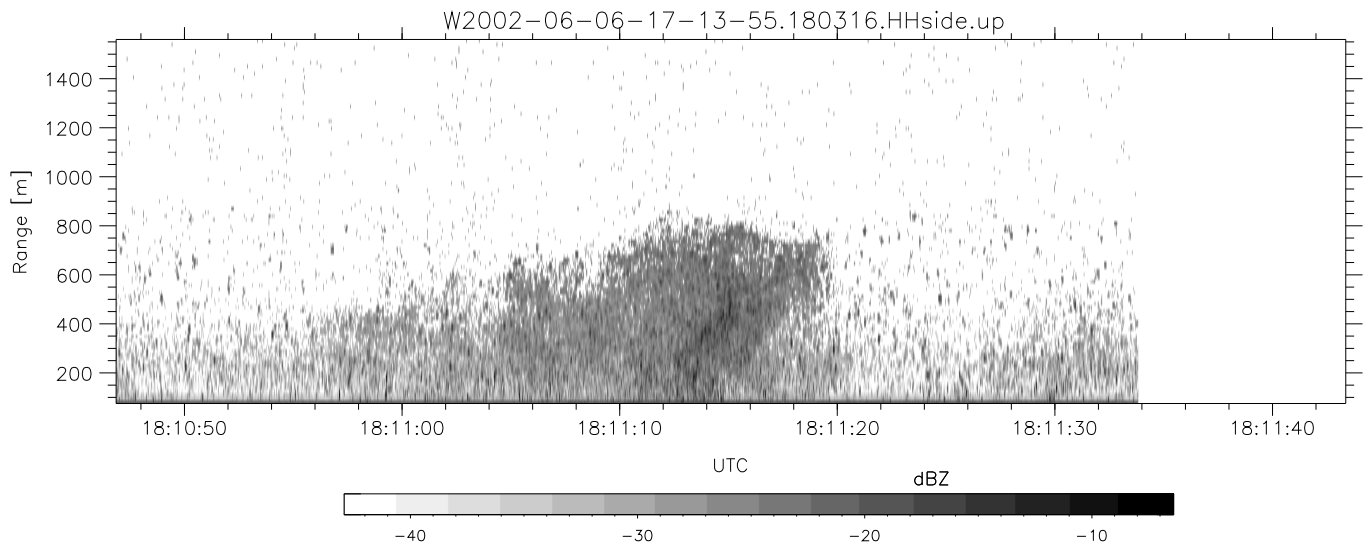
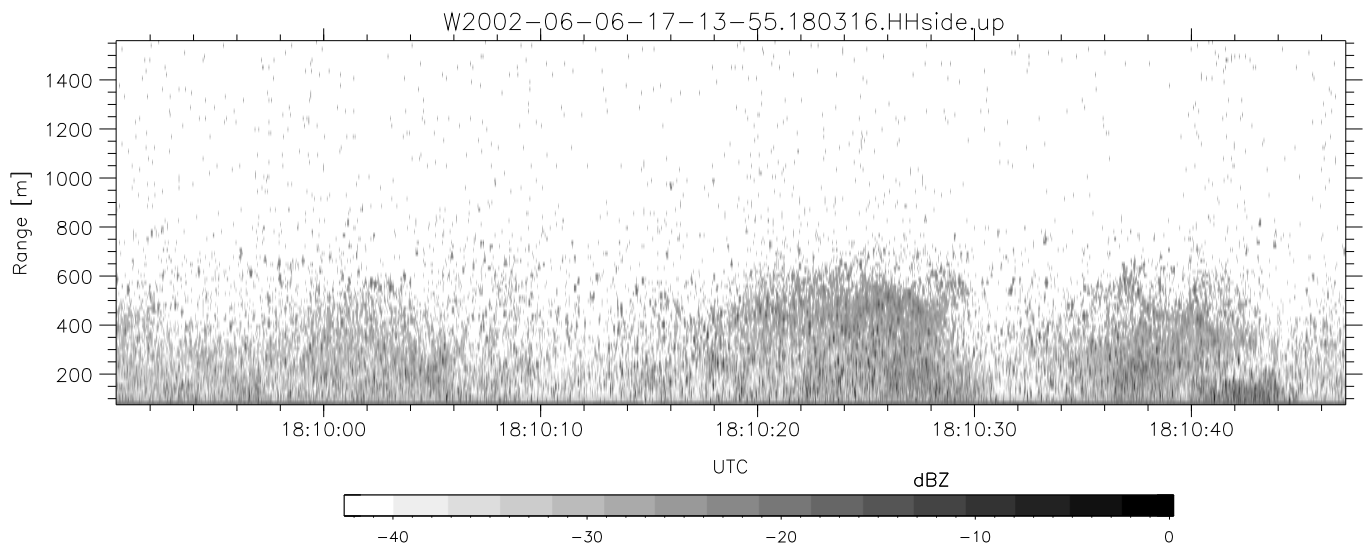
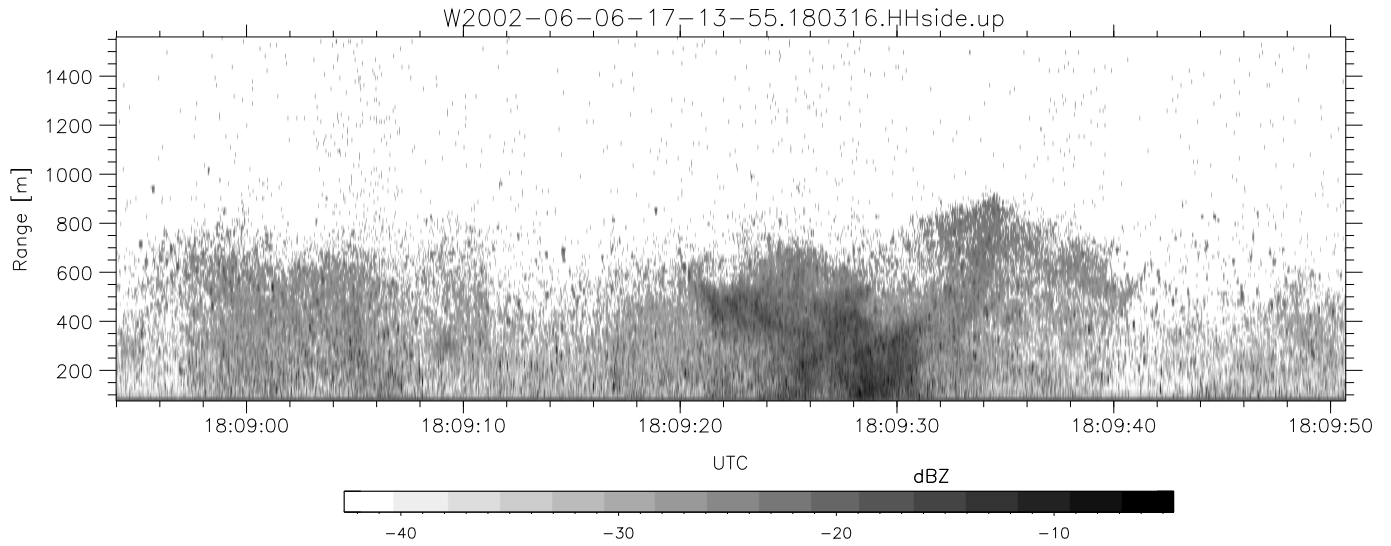
W2002-06-06-17-13-55 - PPMAG4
 IRIG:1,UTC: 17:13:54.93 to 18:18:46.62, Dur: 3892s
 TimeLngth: 3891.68s, TimeInt: 28ms (34.5pps)
 TimeCor=-13.0s, DSPDif(mn,min,mx):29,28,365
 PPS(min,max,std): 23,36,2.29
 Prof: 640 to 134897, NumProf(t/r): 134257/17069
 ProcTime/Recs: 18:03:16-18:11:33/102414-119482
 MxACQtime: 33ms; DRate: 193.1KB/s; Flags: 0, 0, 0
 Pulse: 275ns, IFfilt: 5.0MHz; ppPol: HH HV VV
 TxPol: HHVV, PRF: 20 10 20 10 kHz
 Range: Delay 75m, Spacing 15m, Gates 100
 Ave. Pulses: 84, Rng/Prof Aspect@90m/s: 5.7

	Min	Max	Mean	Std	Varc%
hhN(dB)	-67.67	-64.22	-65.86	-75.95	9.8
vvN(dB)	-68.01	-64.63	-66.21	-76.22	10.0
hhL(dB)	-21.82	-8.69	-10.41	-17.47	19.7
vvL(dB)	-26.04	-12.50	-15.96	-23.74	16.7
ppN(m/s)	-12.48	12.24	-0.08	4.11	
ppT(m/s)	-98.59	96.67	-0.59	32.50	
hh/vv(dB)	-NaN	56.01	12.67	35.67	1994
vh/hh(dB)	-NaN	-28.99	-35.34	-35.81	89.6
hv/vv(dB)	-NaN	-22.47	-51.59	-42.84	750.
hnjmp(dB)	-2.58	2.09	-0.10	-8.74	13.7
vnjmp(dB)	-2.50	2.26	-0.08	-8.62	14.0



IHOP 2002 (dual-antenna config, modes 1,3,4,7) Data (cal: 49.0,50.0)

W2002-06-06-17-13-55 - PPMAG4	Min	Max	Mean	Std	Varc%	
IRIG:1,UTC: 17:13:54.93 to 18:18:46.62, Dur: 3892s	hhN (dB)	-67.67	-64.22	-65.86	-75.95	9.8
TimeLngth: 3891.68s, TimeInt: 28ms (34.5pps)	vvN (dB)	-68.01	-64.63	-66.21	-76.22	10.0
TimeCor=-13.0s, DSPDif(mn,min,mx):29,28,365	hhL (dB)	-21.82	-8.69	-10.41	-17.47	19.7
PPS(min,max,std): 23,36,2.29	vvL (dB)	-26.04	-12.50	-15.96	-23.74	16.7
Prof: 640 to 134897, NumProf(t/r): 134257/17069	ppN (m/s)	-12.48	12.24	-0.08	4.11	
ProcTime/Recs: 18:03:16-18:11:33/102414-119482	ppT (m/s)	-98.59	96.67	-0.59	32.50	
MxACQtime: 33ms; DRate: 193.1KB/s; Flags: 0, 0, 0	hh/vv (dB)	-NaN	56.01	12.67	35.67	1994
Pulse: 275ns, IFilt: 5.0MHz; ppPol: HH HV VV	vh/hh (dB)	-NaN	-28.99	-35.34	-35.81	89.6
TxPol: HHVV, PRF: 20 10 20 10 kHz	hv/vv (dB)	-NaN	-22.47	-51.59	-42.84	750.
Range: Delay 75m, Spacing 15m, Gates 100	hn/jmp (dB)	-2.58	2.09	-0.10	-8.74	13.7
Ave. Pulses: 84, Rng/Prof Aspect@90m/s: 5.7	vn/jmp (dB)	-2.50	2.26	-0.08	-8.62	14.0



IHOP 2002 (dual-antenna config, modes 1,3,4,7) Data (cal: 49.0,50.0)

	Min	Max	Mean	Std	Varc%
W2002-06-06-17-13-55 - PPMAG4					
IRIG:1,UTC: 17:13:54.93 to 18:18:46.62, Dur: 3892s	hhN (dB)	-67.67 -64.22	-65.86	-75.95	9.8
TimeLngth: 3891.68s, TimeInt: 28ms (34.5pps)	vvN (dB)	-68.01 -64.63	-66.21	-76.22	10.0
TimeCor=-13.0s, DSPDif(mn,min,mx):29,28,365	hhL (dB)	-21.82 -8.69	-10.41	-17.47	19.7
PPS(min,max,std): 23,36,2.29	vvL (dB)	-26.04 -12.50	-15.96	-23.74	16.7
Prof: 640 to 134897, NumProf(t/r): 134257/17069	ppN (m/s)	-12.48 12.24	-0.08	4.11	
ProcTime/Recs: 18:03:16-18:11:33/102414-119482	ppT (m/s)	-98.59 96.67	-0.59	32.50	
MxAcQtime: 33ms; DRate: 193.1KB/s; Flags: 0, 0, 0	hh/vv (dB)	-NaN 56.01	12.67	35.67	1994
Pulse: 275ns, IFilt: 5.0MHz; ppPol: HH HV VV	vh/hh (dB)	-NaN -28.99	-35.34	-35.81	89.6
TxPol: HHVV, PRF: 20 10 20 10 kHz	hv/vv (dB)	-NaN -22.47	-51.59	-42.84	750.
Range: Delay 75m, Spacing 15m, Gates 100	hnjmp (dB)	-2.58 2.09	-0.10	-8.74	13.7
Ave. Pulses: 84, Rng/Prof Aspect@90m/s: 5.7	vnjmp (dB)	-2.50 2.26	-0.08	-8.62	14.0