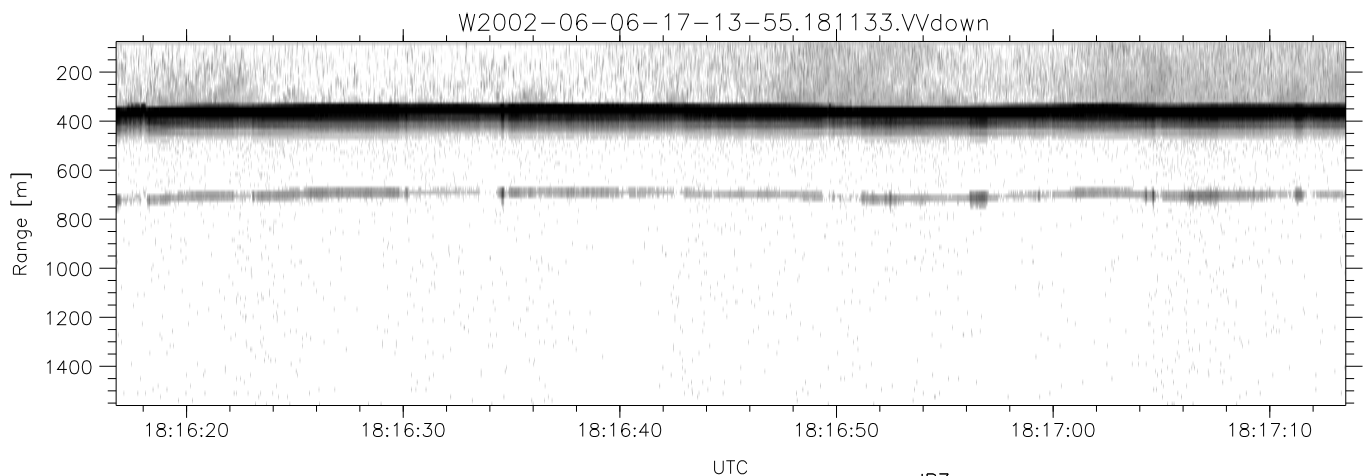
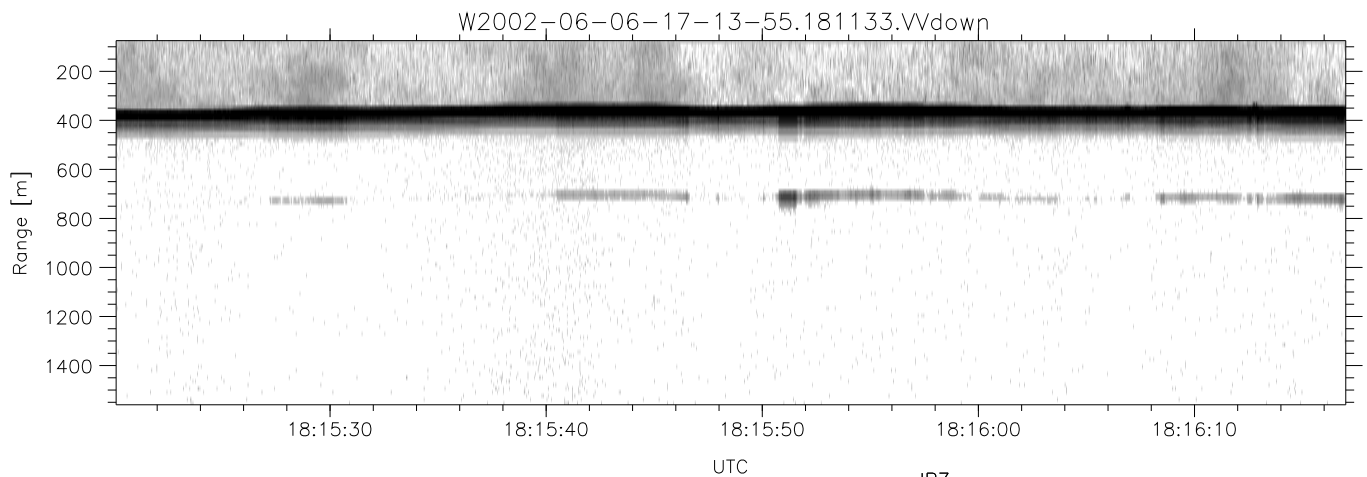
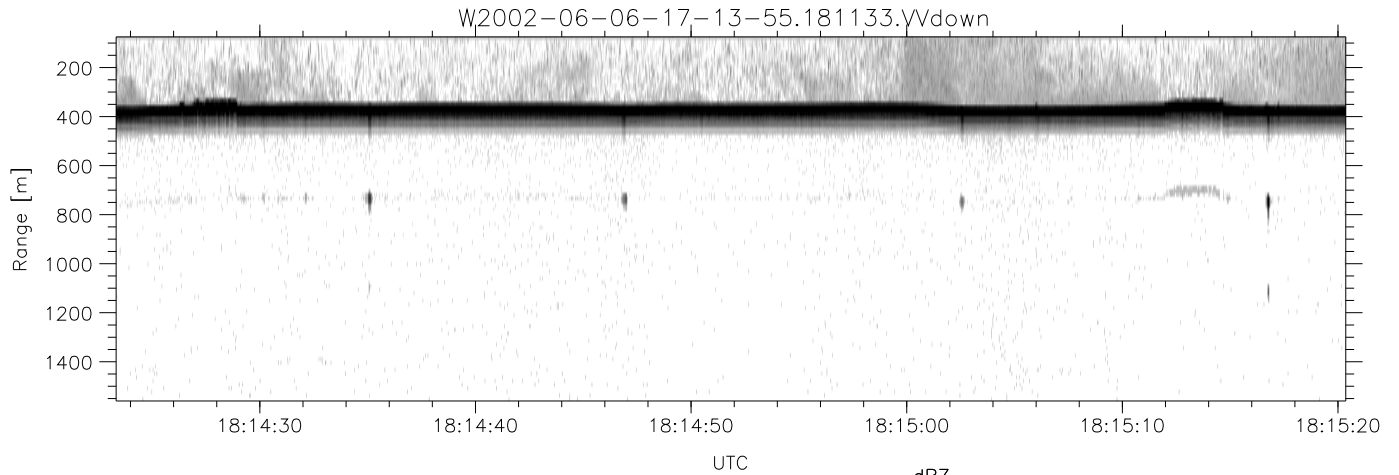


IHOP 2002 (dual-antenna config, modes 1,3,4,7) Data (cal: 49.0,50.0)

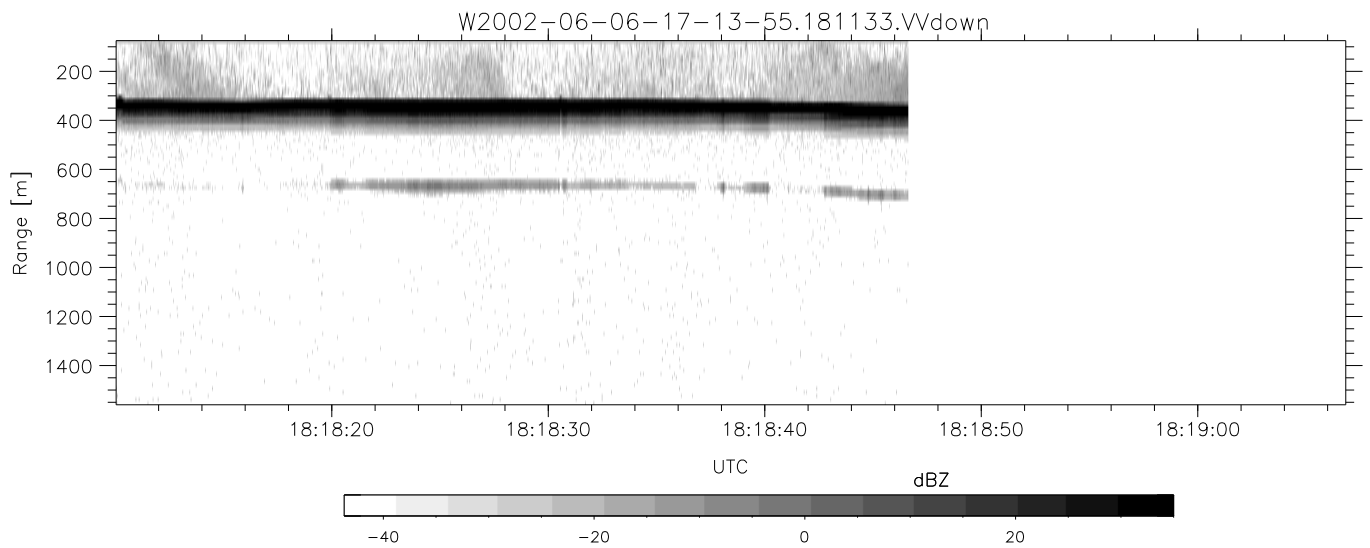
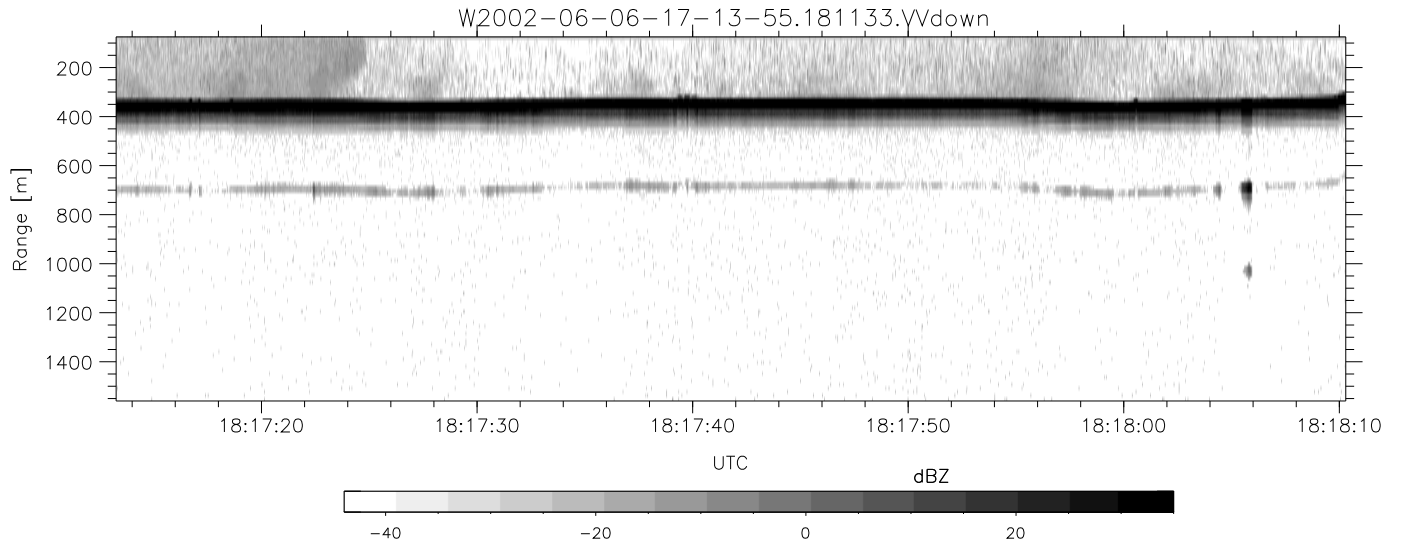
W2002-06-06-17-13-55 - PPMAG4  
 IRIG:1,UTC: 17:13:54.93 to 18:18:46.62, Dur: 3892s  
 TimeLngth: 3891.68s, TimeInt: 28ms (34.5pps)  
 TimeCor=-13.0s, DSPDif(mn,min,mx):29,28,329  
 PPS(min,max,std): 23,36,2.36  
 Prof: 640 to 134897, NumProf(t/r): 134257/14774  
 ProcTime/Recs: 18:11:33-18:18:46/119483-134256  
 MxACQtime: 33ms; DRate: 193.1KB/s; Flags: 0, 0, 0  
 Pulse: 275ns, IFfilt: 5.0MHz; ppPol: HH HV VV  
 TxPol: HHVV, PRF: 20 10 20 10 kHz  
 Range: Delay 75m, Spacing 15m, Gates 100  
 Ave. Pulses: 84, Rng/Prof Aspect@90m/s: 5.7

	Min	Max	Mean	Std	Varc%
hhN(dB)	-67.77	-64.45	-65.91	-75.95	9.9
vvN(dB)	-68.12	-64.68	-66.25	-76.28	9.9
hhL(dB)	-18.83	-9.16	-10.86	-19.59	13.4
vvL(dB)	-23.26	-14.01	-16.09	-24.17	15.6
ppN(m/s)	-12.45	12.68	-0.02	4.09	
ppT(m/s)	-98.37	100.18	-0.15	32.34	
hh/vv(dB)	-NaN	48.62	10.74	28.96	6641
vh/hh(dB)	-NaN	-31.01	-35.22	-36.85	68.8
hv/vv(dB)	-NaN	-35.19	-54.38	-46.89	561.
hnjmp(dB)	-1.97	2.43	0.17	-8.45	13.7
vnjmp(dB)	-2.33	2.49	0.17	-8.34	14.1



IHOP 2002 (dual-antenna config, modes 1,3,4,7) Data (cal: 49.0,50.0)

W2002-06-06-17-13-55 - PPMAG4	Min	Max	Mean	Std	Varc%	
IRIG:1,UTC: 17:13:54.93 to 18:18:46.62, Dur: 3892s	hhN (dB)	-67.77	-64.45	-65.91	-75.95	9.9
TimeLngth: 3891.68s, TimeInt: 28ms (34.5pps)	vvN (dB)	-68.12	-64.68	-66.25	-76.28	9.9
TimeCor=-13.0s, DSPDif(mn,min,mx):29,28,329	hhL (dB)	-18.83	-9.16	-10.86	-19.59	13.4
PPS(min,max,std): 23,36,2.36	vvL (dB)	-23.26	-14.01	-16.09	-24.17	15.6
Prof: 640 to 134897, NumProf(t/r): 134257/14774	ppN (m/s)	-12.45	12.68	-0.02	4.09	
ProcTime/Recs: 18:11:33-18:18:46/119483-134256	ppT (m/s)	-98.37	100.18	-0.15	32.34	
MxAcQtime: 33ms; DRate: 193.1KB/s; Flags: 0, 0, 0	hh/vv (dB)	-NaN	48.62	10.74	28.96	6641
Pulse: 275ns, IFilt: 5.0MHz; ppPol: HH HV VV	vh/hh (dB)	-NaN	-31.01	-35.22	-36.85	68.8
TxPol: HHVV, PRF: 20 10 20 10 kHz	hv/vv (dB)	-NaN	-35.19	-54.38	-46.89	561.
Range: Delay 75m, Spacing 15m, Gates 100	hnjmp (dB)	-1.97	2.43	0.17	-8.45	13.7
Ave. Pulses: 84, Rng/Prof Aspect@90m/s: 5.7	vnjmp (dB)	-2.33	2.49	0.17	-8.34	14.1



IHOP 2002 (dual-antenna config, modes 1,3,4,7) Data (cal: 49.0,50.0)

W2002-06-06-17-13-55 - PPMAG4					
IRIG:1,UTC: 17:13:54.93 to 18:18:46.62, Dur: 3892s	hhN(dB)	Min	Max	Mean	Std
TimeLngth: 3891.68s, TimeInt: 28ms (34.5pps)	vvN(dB)	-67.77	-64.45	-65.91	-75.95
TimeCor=-13.0s, DSPDif(mn,min,mx):29,28,329	hhL(dB)	-68.12	-64.68	-66.25	-76.28
PPS(min,max,std): 23,36,2.36	vvL(dB)	-18.83	-9.16	-10.86	-19.59
Prof: 640 to 134897, NumProf(t/r): 134257/14774	ppN(m/s)	-23.26	-14.01	-16.09	-24.17
ProcTime/Recs: 18:11:33-18:18:46/119483-134256	ppT(m/s)	-12.45	12.68	-0.02	4.09
MxACQtime: 33ms; DRate: 193.1KB/s; Flags: 0, 0, 0	hh/vv(dB)	-98.37	100.18	-0.15	32.34
Pulse: 275ns, IFilt: 5.0MHz; ppPol: HH HV VV	vh/hh(dB)	-NaN	48.62	10.74	28.96
TxPol: HHVV, PRF: 20 10 20 10 kHz	hv/vv(dB)	-NaN	-31.01	-35.22	-36.85
Range: Delay 75m, Spacing 15m, Gates 100	hn/jmp(dB)	-NaN	-35.19	-54.38	-46.89
Ave. Pulses: 84, Rng/Prof Aspect@90m/s: 5.7	vn/jmp(dB)	-1.97	2.43	0.17	-8.45
		-2.33	2.49	0.17	-8.34