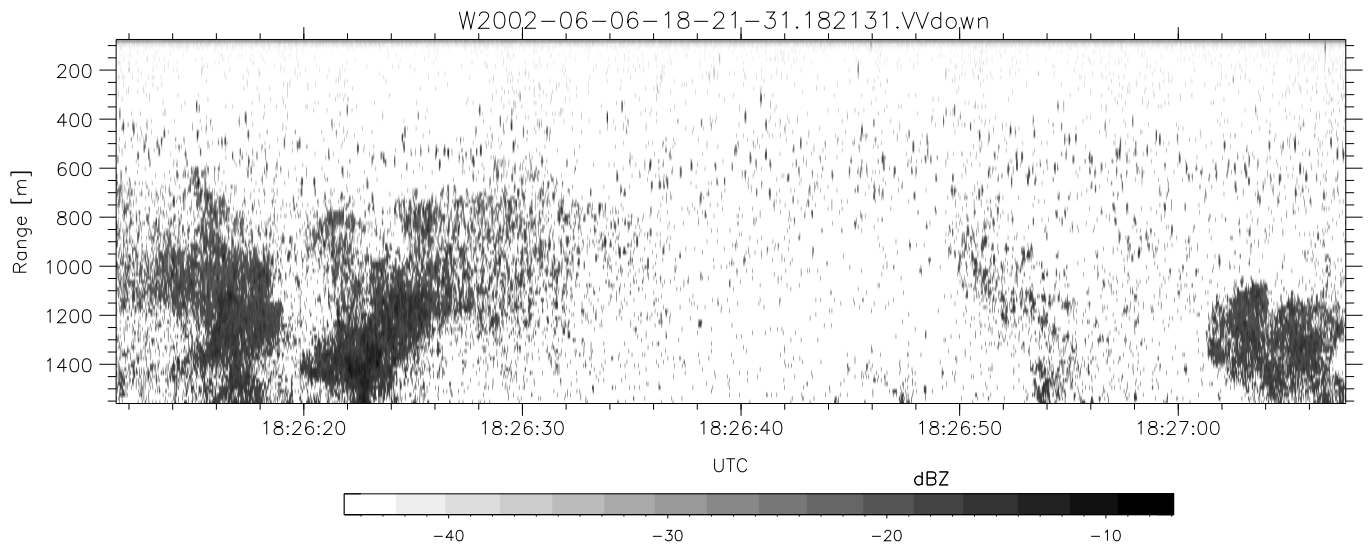
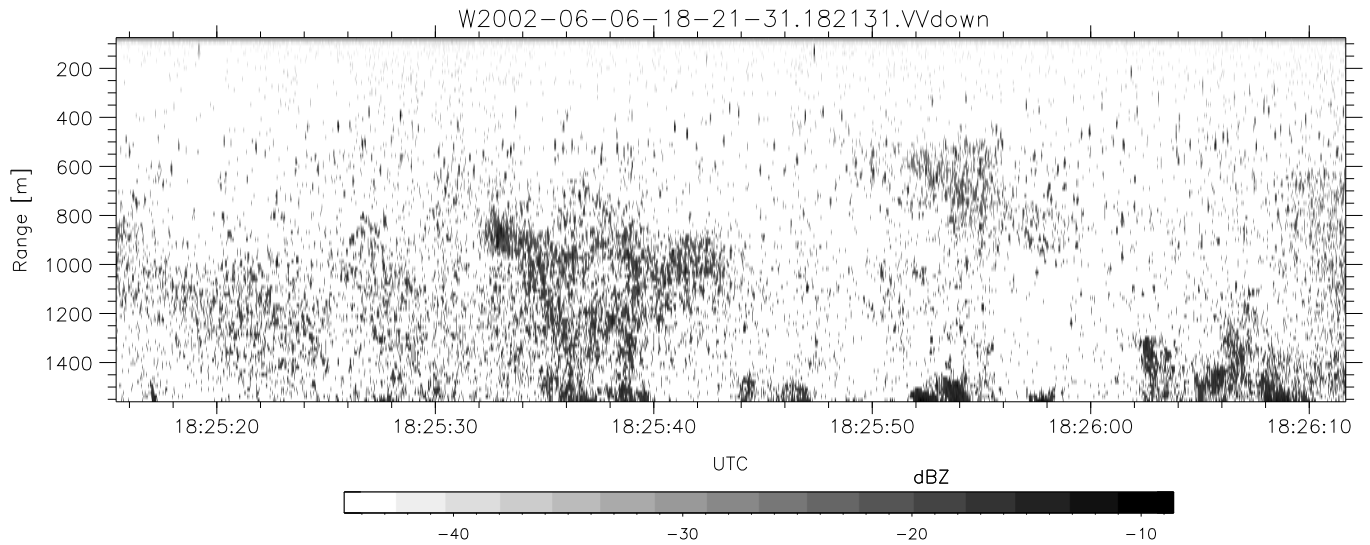
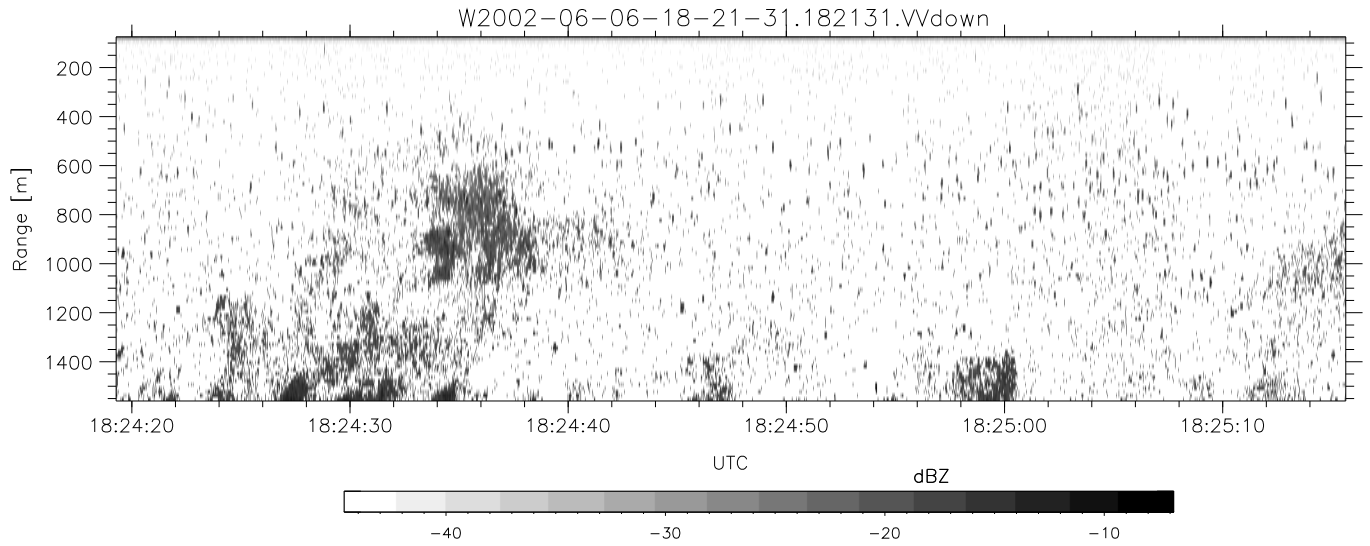


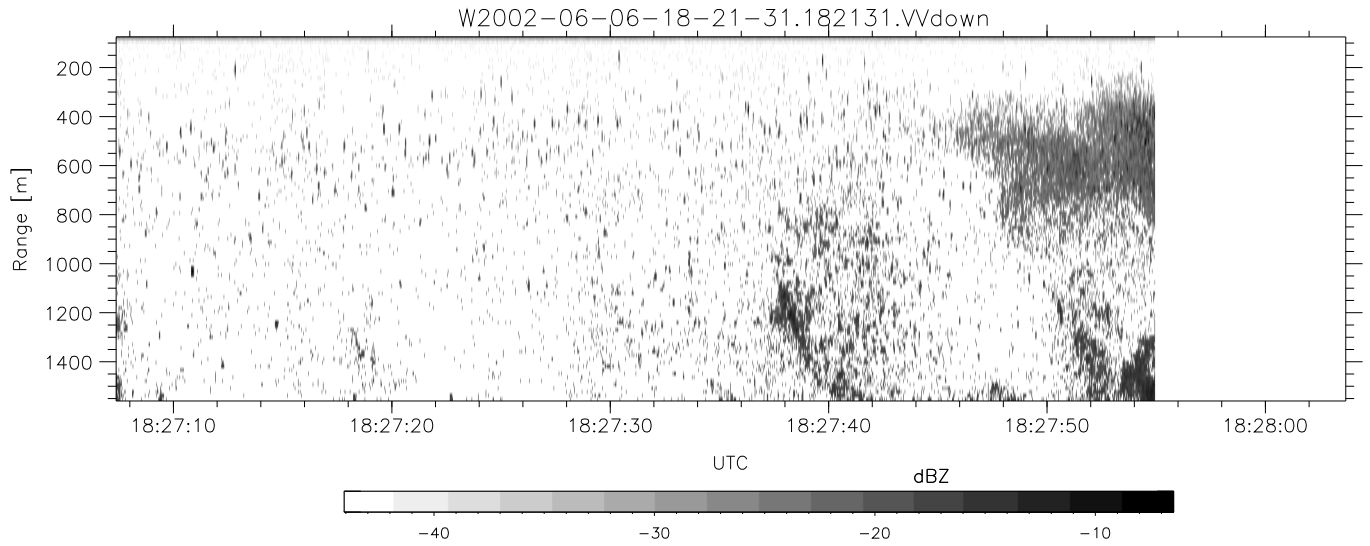
IHOP 2002 (dual-antenna config, modes 1,3,4,7) Data (cal: 55.0,50.0)

W2002-06-06-18-21-31 - PPMAG4	Min	Max	Mean	Std	Varc%	
IRIG:1,UTC: 18:21:31.41 to 18:27:54.94, Dur: 383s	hhN (dB)	-67.20	-63.91	-65.43	-75.35	10.2
TimeLngth: 383.53s, TimeInt: 29ms (34.1pps)	vvN (dB)	-68.07	-64.67	-66.28	-76.24	10.1
TimeCor=-13.0s, DSPDif(mn,min,mx):29,28,317	hhL (dB)	-19.08	-9.46	-14.81	-15.86	78.5
PPS(min,max,std): 24,36,2.27	vvL (dB)	-29.37	-13.91	-20.70	-21.37	85.6
Prof: 554 to 13635, NumProf(t/r): 13081/13081	ppN (m/s)	-12.46	12.09	0.02	4.15	
MxACQtime: 33ms; DRate: 190.9KB/s; Flags: 0, 0, 0	ppT (m/s)	-98.45	95.47	0.17	32.82	
Pulse: 275ns, IFfilt: 5.0MHz; ppPol: HH HV VV	hh/vv (dB)	-NaN	94.17	54.78	75.13	1082
TxPol: HHVV, PRF: 20 10 20 10 kHz	vh/hh (dB)	-NaN	-31.05	-46.67	-41.72	312.
Range: Delay 75m, Spacing 15m, Gates 100	hv/vv (dB)	-NaN	-35.01	-NaN	-44.64	-194
Ave. Pulses: 84, Rng/Prof Aspect@90m/s: 5.7	hn/jmp (dB)	-2.39	1.90	-0.09	-8.70	13.8
	vn/jmp (dB)	-2.54	2.12	-0.07	-8.53	14.3



IHOP 2002 (dual-antenna config, modes 1,3,4,7) Data (cal: 55.0,50.0)

	Min	Max	Mean	Std	Varc%
W2002-06-06-18-21-31 - PPMAG4					
IRIG:1,UTC: 18:21:31.41 to 18:27:54.94, Dur: 383s	hhN (dB)	-67.20 -63.91	-65.43	-75.35	10.2
TimeLngth: 383.53s, TimeInt: 29ms (34.1pps)	vvN (dB)	-68.07 -64.67	-66.28	-76.24	10.1
TimeCor=-13.0s, DSPDif(mn,min,mx):29,28,317	hhL (dB)	-19.08 -9.46	-14.81	-15.86	78.5
PPS(min,max,std): 24,36,2.27	vvL (dB)	-29.37 -13.91	-20.70	-21.37	85.6
Prof: 554 to 13635, NumProf(t/r): 13081/13081	ppN (m/s)	-12.46 12.09	0.02	4.15	
MxACQtime: 33ms; DRate: 190.9KB/s; Flags: 0, 0, 0	ppT (m/s)	-98.45 95.47	0.17	32.82	
Pulse: 275ns, IFfilt: 5.0MHz; ppPol: HH HV VV	hh/vv (dB)	-NaN 94.17	54.78	75.13	1082
TxPol: HHVV, PRF: 20 10 20 10 kHz	vh/hh (dB)	-NaN -31.05	-46.67	-41.72	312.
Range: Delay 75m, Spacing 15m, Gates 100	hv/vv (dB)	-NaN -35.01	-NaN	-44.64	-194
Ave. Pulses: 84, Rng/Prof Aspect@90m/s: 5.7	hn/jmp (dB)	-2.39 1.90	-0.09	-8.70	13.8
	vn/jmp (dB)	-2.54 2.12	-0.07	-8.53	14.3



IHOP 2002 (dual-antenna config, modes 1,3,4,7) Data (cal: 55.0,50.0)

W2002-06-06-18-21-31 - PPMAG4						
IRIG:1,UTC: 18:21:31.41 to 18:27:54.94, Dur: 383s	hhN(dB)	Min	Max	Mean	Std	Varc%
TimeLngth: 383.53s, TimeInt: 29ms (34.1pps)	vvN(dB)	-67.20	-63.91	-65.43	-75.35	10.2
TimeCor=-13.0s, DSPDif(mn,min,mx):29,28,317	hhL(dB)	-68.07	-64.67	-66.28	-76.24	10.1
PPS(min,max,std): 24,36,2.27	vvL(dB)	-19.08	-9.46	-14.81	-15.86	78.5
Prof: 554 to 13635, NumProf(t/r): 13081/13081	ppN(m/s)	-29.37	-13.91	-20.70	-21.37	85.6
MxACQtime: 33ms; DRate: 190.9KB/s; Flags: 0, 0, 0	ppT(m/s)	-12.46	12.09	0.02	4.15	
Pulse: 275ns, IFfilt: 5.0MHz; ppPol: HH HV VV	hh/vv(dB)	-98.45	95.47	0.17	32.82	
TxPol: HHVV, PRF: 20 10 20 10 kHz	vh/hh(dB)	-NaN	94.17	54.78	75.13	1082
Range: Delay 75m, Spacing 15m, Gates 100	hv/vv(dB)	-NaN	-31.05	-46.67	-41.72	312.
Ave. Pulses: 84, Rng/Prof Aspect@90m/s: 5.7	hn/vv(dB)	-NaN	-35.01	-NaN	-44.64	-194
	hn/jmp(dB)	-2.39	1.90	-0.09	-8.70	13.8
	vn/jmp(dB)	-2.54	2.12	-0.07	-8.53	14.3