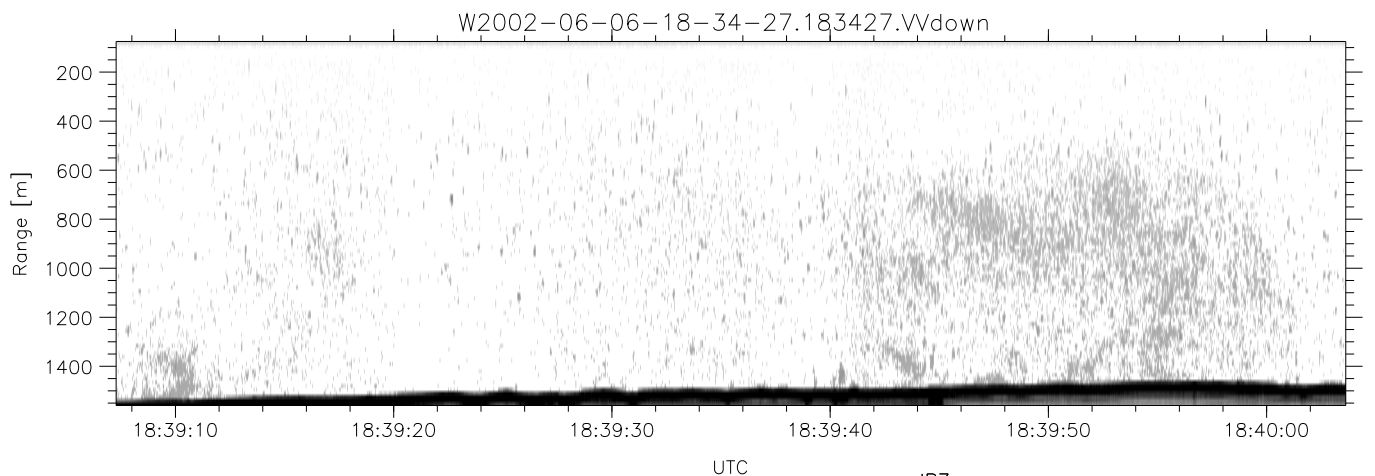
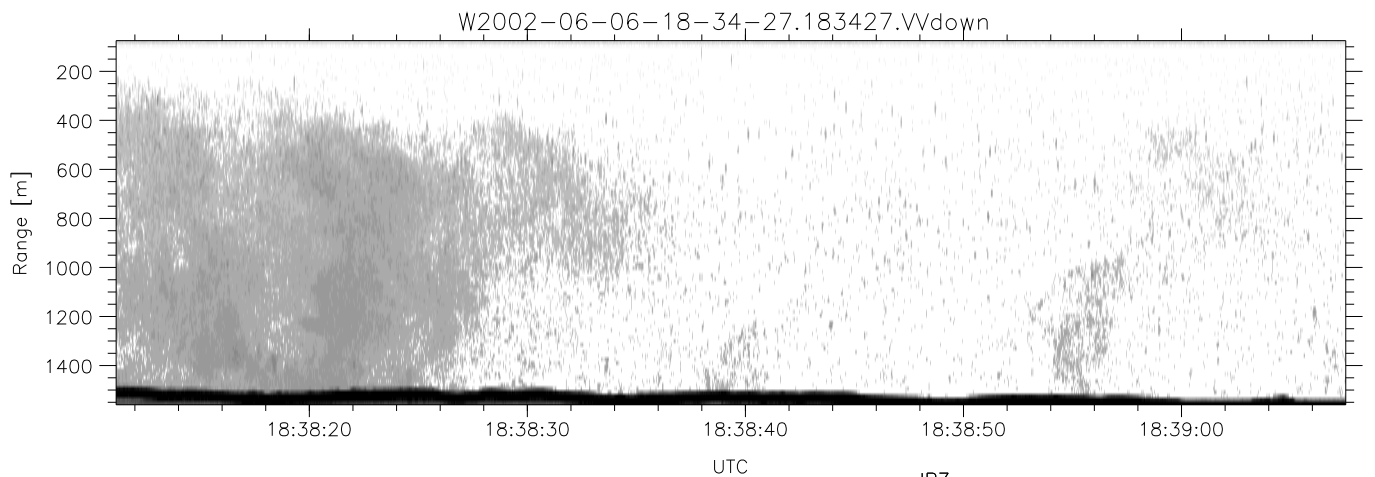
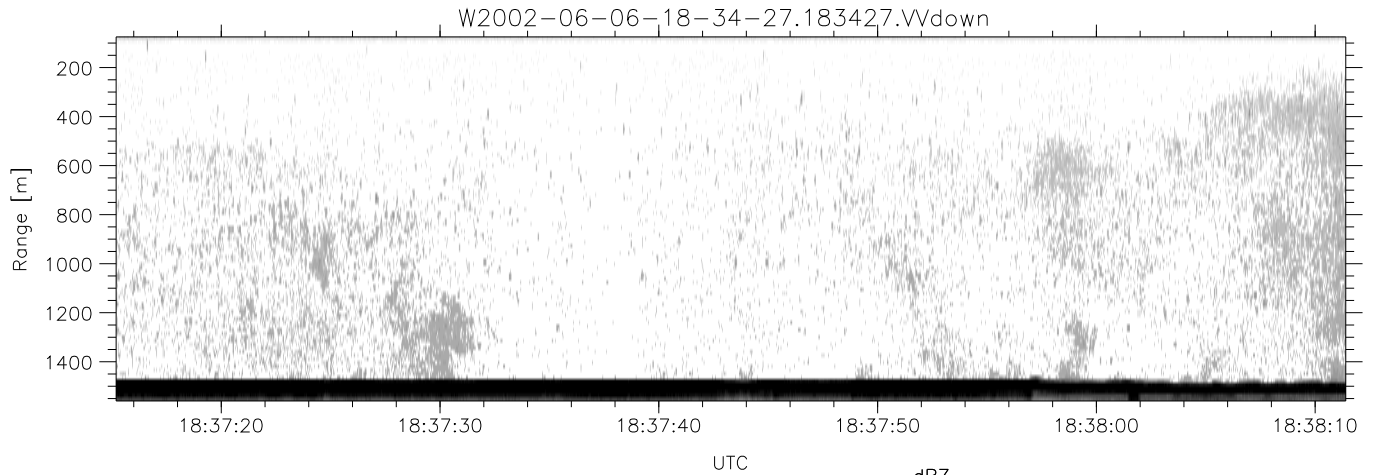


IHOP 2002 (dual-antenna config, modes 1,3,4,7) Data (cal: 55.0,50.0)

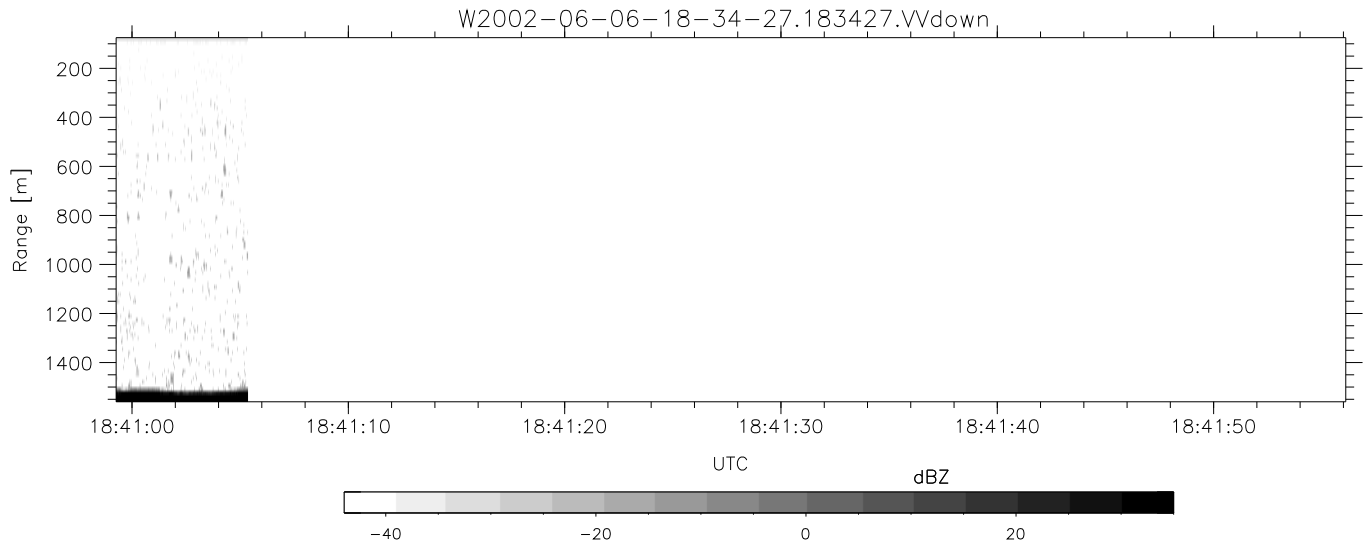
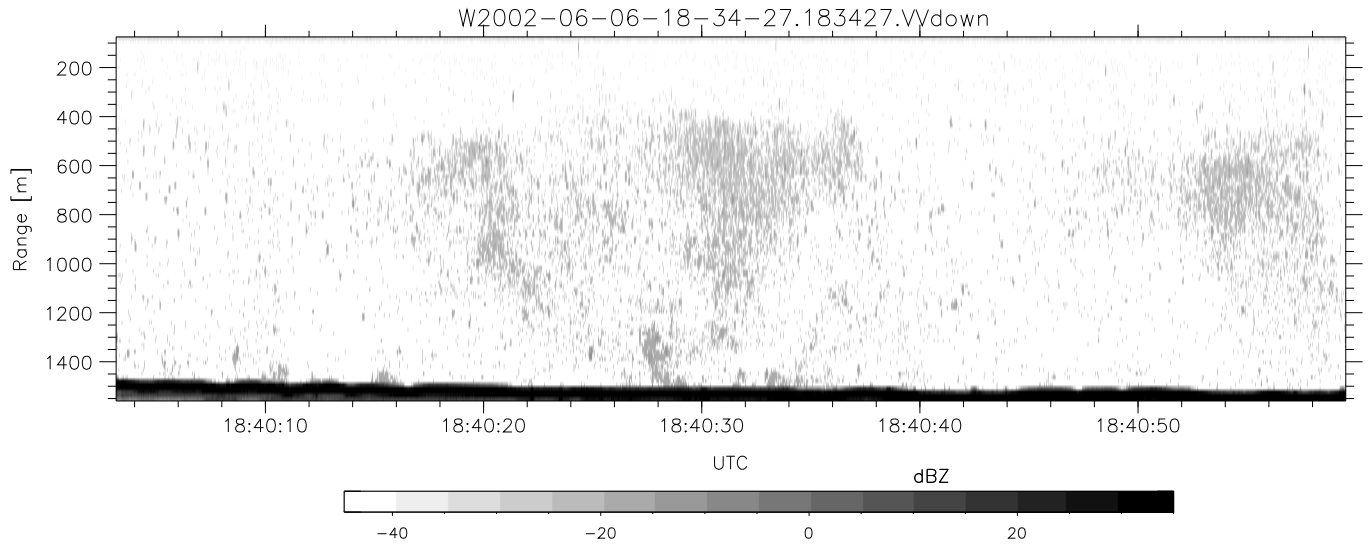
W2002-06-06-18-34-27 - PPMAG4
 IRIG:1,UTC: 18:34:27.30 to 18:41:05.34, Dur: 398s
 TimeLngth: 398.05s, TimeInt: 29ms (34.1pps)
 TimeCor=-13.0s, DSPDif(mn,min,mx):29,28,362
 PPS(min,max,std): 23,36,2.28
 Prof: 421 to 13989, NumProf(t/r): 13568/13568
 MxACQtime: 33ms; DRate: 190.8KB/s; Flags: 0, 0, 0
 Pulse: 275ns, IFfilt: 5.0MHz; ppPol: HH HV VV
 TxPol: HHVV, PRF: 20 10 20 10 kHz
 Range: Delay 75m, Spacing 15m, Gates 100
 Ave. Pulses: 84, Rng/Prof Aspect@90m/s: 5.7

	Min	Max	Mean	Std	Varc%
hhN(dB)	-67.17	-63.73	-65.43	-75.45	10.0
vvN(dB)	-67.95	-64.88	-66.30	-76.28	10.1
hhL(dB)	-21.52	-16.08	-19.03	-23.50	35.7
vvL(dB)	-24.88	-20.71	-22.67	-30.23	17.5
ppN(m/s)	-11.99	12.74	0.04	4.15	
ppT(m/s)	-94.74	100.62	0.30	32.75	
hh/vv(dB)	-NaN	38.50	22.12	29.93	603.
vh/hh(dB)	-99.00	-99.00	-99.00	-99.00	-99.
hv/vv(dB)	-NaN	-33.46	-50.01	-45.92	256.
hn_jmp(dB)	-2.24	2.51	0.18	-8.40	13.9
vn_jmp(dB)	-2.40	2.53	0.16	-8.33	14.2



IHOP 2002 (dual-antenna config, modes 1,3,4,7) Data (cal: 55.0,50.0)

W2002-06-06-18-34-27 - PPMAG4	Min	Max	Mean	Std	Varc%	
IRIG:1,UTC: 18:34:27.30 to 18:41:05.34, Dur: 398s	hhN(dB)	-67.17	-63.73	-65.43	-75.45	10.0
TimeLngth: 398.05s, TimeInt: 29ms (34.1pps)	vvN(dB)	-67.95	-64.88	-66.30	-76.28	10.1
TimeCor=-13.0s, DSPDif(mn,min,mx):29,28,362	hhL(dB)	-21.52	-16.08	-19.03	-23.50	35.7
PPS(min,max,std): 23,36,2.28	vvL(dB)	-24.88	-20.71	-22.67	-30.23	17.5
Prof: 421 to 13989, NumProf(t/r): 13568/13568	ppN(m/s)	-11.99	12.74	0.04	4.15	
MxACQtime: 33ms; DRate: 190.8KB/s; Flags: 0, 0, 0	ppT(m/s)	-94.74	100.62	0.30	32.75	
Pulse: 275ns, IFfilt: 5.0MHz; ppPol: HH HV VV	hh/vv(dB)	-NaN	38.50	22.12	29.93	603.
TxPol: HHVV, PRF: 20 10 20 10 kHz	vh/hh(dB)	-99.00	-99.00	-99.00	-99.00	-99.
Range: Delay 75m, Spacing 15m, Gates 100	hv/vv(dB)	-NaN	-33.46	-50.01	-45.92	256.
Ave. Pulses: 84, Rng/Prof Aspect@90m/s: 5.7	hn_jmp(dB)	-2.24	2.51	0.18	-8.40	13.9
	vn_jmp(dB)	-2.40	2.53	0.16	-8.33	14.2



IHOP 2002 (dual-antenna config, modes 1,3,4,7) Data (cal: 55.0,50.0)

W2002-06-06-18-34-27 - PPMAG4						
IRIG:1,UTC: 18:34:27.30 to 18:41:05.34, Dur: 398s	hhN (dB)	Min	Max	Mean	Std	Varc%
TimeLngth: 398.05s, TimeInt: 29ms (34.1pps)	vvN (dB)	-67.17	-63.73	-65.43	-75.45	10.0
TimeCor=-13.0s, DSPDif(mn,min,mx):29,28,362	hhL (dB)	-67.95	-64.88	-66.30	-76.28	10.1
PPS(min,max,std): 23,36,2.28	vvL (dB)	-21.52	-16.08	-19.03	-23.50	35.7
Prof: 421 to 13989, NumProf(t/r): 13568/13568	ppN (m/s)	-24.88	-20.71	-22.67	-30.23	17.5
MxACQtime: 33ms; DRate: 190.8KB/s; Flags: 0, 0, 0	ppT (m/s)	-11.99	12.74	0.04	4.15	
Pulse: 275ns, IFFilt: 5.0MHz; ppPol: HH HV VV	hh/vv (dB)	-94.74	100.62	0.30	32.75	
TxPol: HHVV, PRF: 20 10 20 10 kHz	vh/vv (dB)	-NaN	38.50	22.12	29.93	603.
Range: Delay 75m, Spacing 15m, Gates 100	hh/hh (dB)	-99.00	-99.00	-99.00	-99.00	-99.
Ave. Pulses: 84, Rng/Prof Aspect@90m/s: 5.7	hv/vv (dB)	-NaN	-33.46	-50.01	-45.92	256.
	hn/jmp (dB)	-2.24	2.51	0.18	-8.40	13.9
	vn/jmp (dB)	-2.40	2.53	0.16	-8.33	14.2