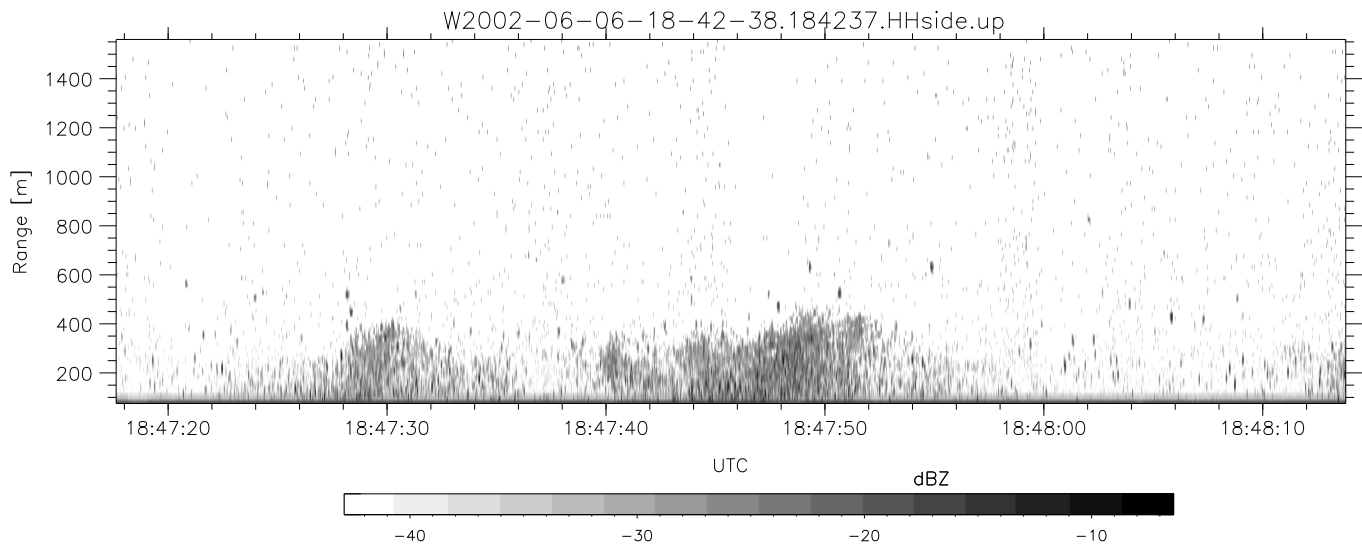
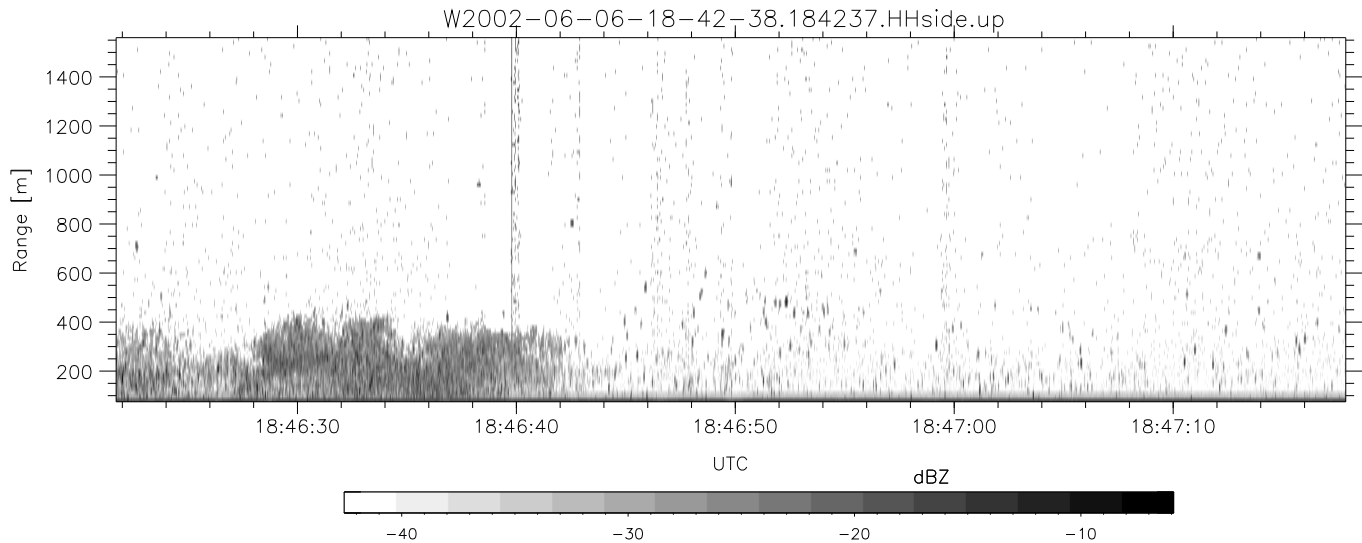
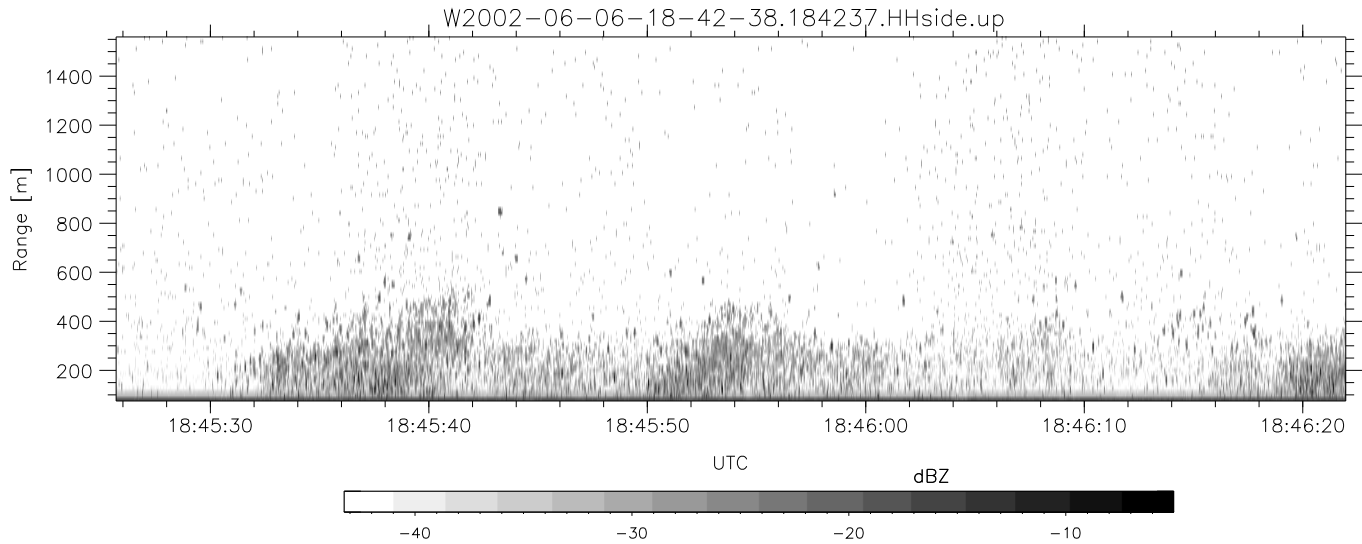


IHOP 2002 (dual-antenna config, modes 1,3,4,7) Data (cal: 49.0,50.0)

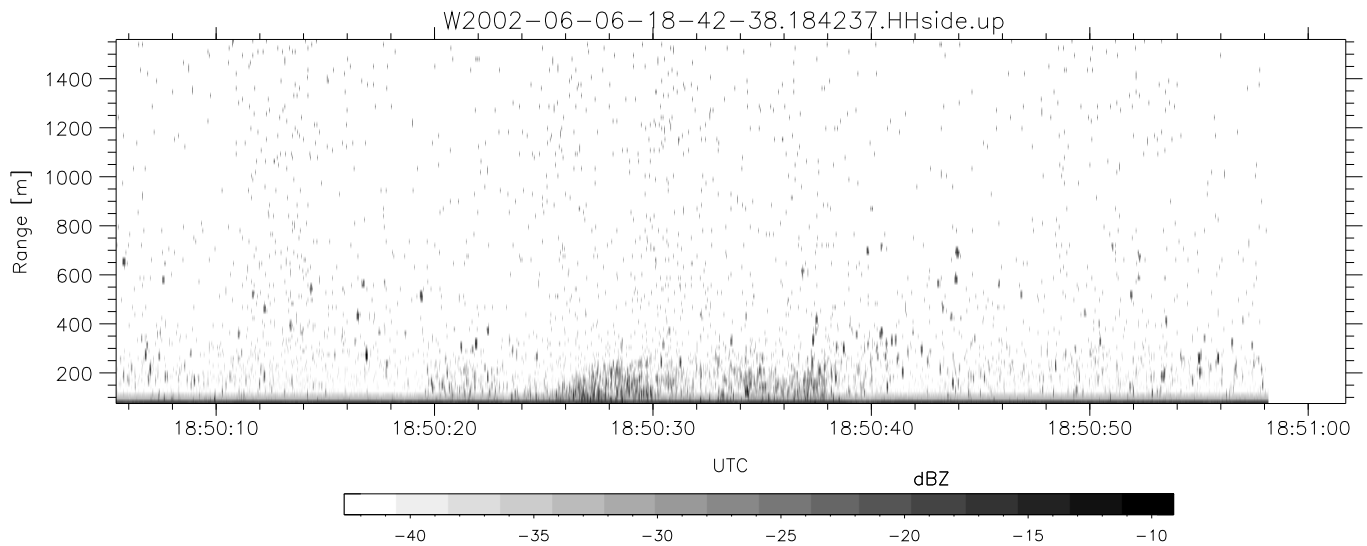
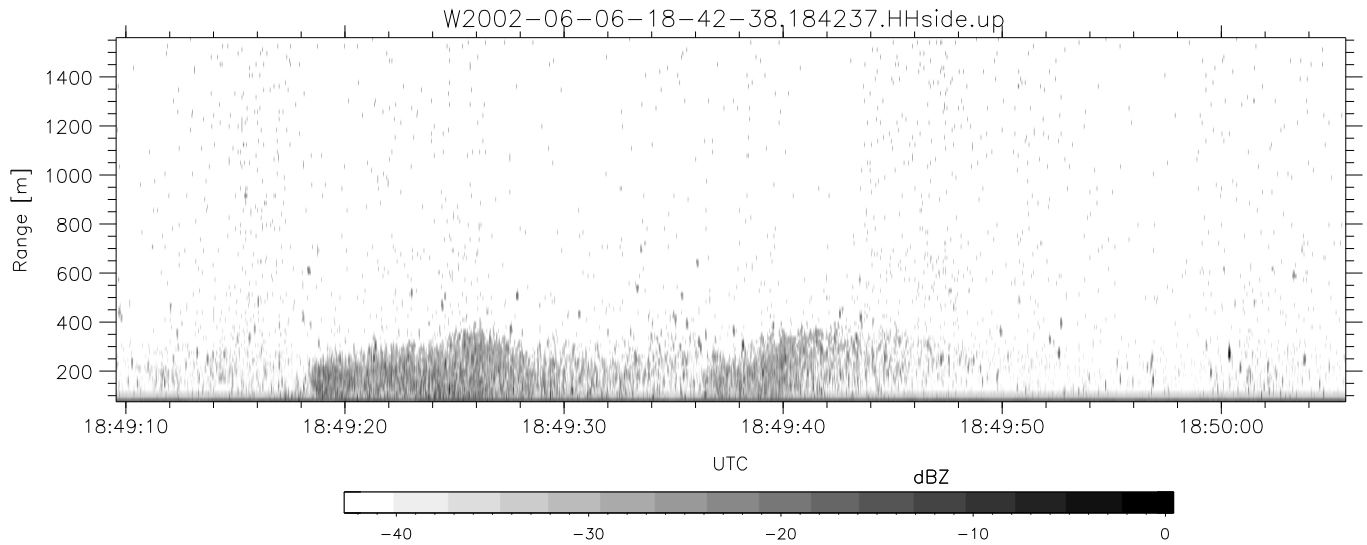
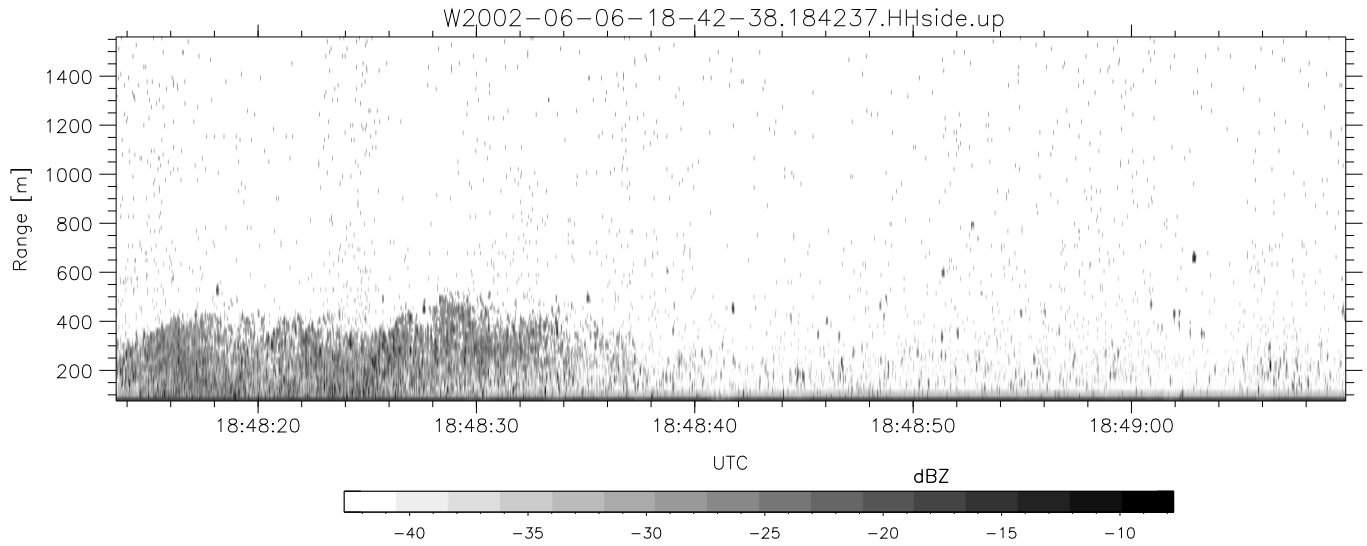
W2002-06-06-18-42-38 - PPMAG4
 IRIG:1,UTC: 18:42:37.85 to 19:04:23.09, Dur: 1306s
 TimeLngth: 1305.24s, TimeInt: 29ms (34.1pps)
 TimeCor=-13.0s, DSPDif(mn,min,mx):29,28,320
 PPS(min,max,std): 12,36,2.39
 Prof: 658 to 45164, NumProf(t/r): 44506/17069
 ProcTime/Recs: 18:42:37-18:50:58/0-17068
 MxAcQtime: 33ms; DRate: 190.9KB/s; Flags: 0, 0, 0
 Pulse: 275ns, IFfilt: 5.0MHz; ppPol: HH HV VV
 TxPol: HHVV, PRF: 20 10 20 10 kHz
 Range: Delay 75m, Spacing 15m, Gates 100
 Ave. Pulses: 84, Rng/Prof Aspect@90m/s: 5.7

	Min	Max	Mean	Std	Varc%
hhN(dB)	-67.70	-62.59	-65.69	-75.65	10.1
vvN(dB)	-68.12	-61.35	-66.28	-75.90	10.9
hhL(dB)	-24.89	-7.27	-9.46	-14.53	31.1
vvL(dB)	-26.26	-12.56	-16.08	-20.48	36.3
ppN(m/s)	-12.55	12.48	0.18	4.17	
ppT(m/s)	-99.12	98.62	1.41	32.96	
hh/vv(dB)	-NaN	48.24	16.21	30.44	2650
vh/hh(dB)	-NaN	-30.73	-36.30	-36.60	93.5
hv/vv(dB)	-NaN	-32.20	-51.46	-45.53	392.
hnjmp(dB)	-2.42	2.14	-0.08	-8.64	13.9
vnjmp(dB)	-2.73	2.12	-0.10	-8.61	14.1



IHOP 2002 (dual-antenna config, modes 1,3,4,7) Data (cal: 49.0,50.0)

	Min	Max	Mean	Std	Varc%	
W2002-06-06-18-42-38 - PPMAG4						
IRIG:1,UTC: 18:42:37.85 to 19:04:23.09, Dur: 1306s	hhN (dB)	-67.70	-62.59	-65.69	-75.65	10.1
TimeLngth: 1305.24s, TimeInt: 29ms (34.1pps)	vvN (dB)	-68.12	-61.35	-66.28	-75.90	10.9
TimeCor=-13.0s, DSPDif(mn,min,mx):29,28,320	hhL (dB)	-24.89	-7.27	-9.46	-14.53	31.1
PPS(min,max,std): 12,36,2.39	vvL (dB)	-26.26	-12.56	-16.08	-20.48	36.3
Prof: 658 to 45164, NumProf(t/r): 44506/17069	ppN (m/s)	-12.55	12.48	0.18	4.17	
ProcTime/Recs: 18:42:37-18:50:58/0-17068	ppT (m/s)	-99.12	98.62	1.41	32.96	
MxACQtime: 33ms; DRate: 190.9KB/s; Flags: 0, 0, 0	hh/vv (dB)	-NaN	48.24	16.21	30.44	2650
Pulse: 275ns, IFilt: 5.0MHz; ppPol: HH HV VV	vh/hh (dB)	-NaN	-30.73	-36.30	-36.60	93.5
TxPol: HHVV, PRF: 20 10 20 10 kHz	hv/vv (dB)	-NaN	-32.20	-51.46	-45.53	392.
Range: Delay 75m, Spacing 15m, Gates 100	hn_jmp (dB)	-2.42	2.14	-0.08	-8.64	13.9
Ave. Pulses: 84, Rng/Prof Aspect@90m/s: 5.7	vn_jmp (dB)	-2.73	2.12	-0.10	-8.61	14.1



IHOP 2002 (dual-antenna config, modes 1,3,4,7) Data (cal: 49.0,50.0)

W2002-06-06-18-42-38 - PPMAG4	Min	Max	Mean	Std	Varc%	
IRIG:1,UTC: 18:42:37.85 to 19:04:23.09, Dur: 1306s	hhN(dB)	-67.70	-62.59	-65.69	-75.65	10.1
TimeLngth: 1305.24s, TimeInt: 29ms (34.1pps)	vvN(dB)	-68.12	-61.35	-66.28	-75.90	10.9
TimeCor=-13.0s, DSPDif(mn,min,mx):29,28,320	hhL(dB)	-24.89	-7.27	-9.46	-14.53	31.1
PPS(min,max,std): 12,36,2.39	vvL(dB)	-26.26	-12.56	-16.08	-20.48	36.3
Prof: 658 to 45164, NumProf(t/r): 44506/17069	ppN(m/s)	-12.55	12.48	0.18	4.17	
ProcTime/Recs: 18:42:37-18:50:58/0-17068	ppT(m/s)	-99.12	98.62	1.41	32.96	
MxACQtime: 33ms; DRate: 190.9KB/s; Flags: 0, 0, 0	hh/vv(dB)	-NaN	48.24	16.21	30.44	2650
Pulse: 275ns, IFfilt: 5.0MHz; ppPol: HH HV VV	vh/hh(dB)	-NaN	-30.73	-36.30	-36.60	93.5
TxPol: HHVV, PRF: 20 10 20 10 kHz	hv/vv(dB)	-NaN	-32.20	-51.46	-45.53	392.
Range: Delay 75m, Spacing 15m, Gates 100	hn_jmp(dB)	-2.42	2.14	-0.08	-8.64	13.9
Ave. Pulses: 84, Rng/Prof Aspect@90m/s: 5.7	vn_jmp(dB)	-2.73	2.12	-0.10	-8.61	14.1