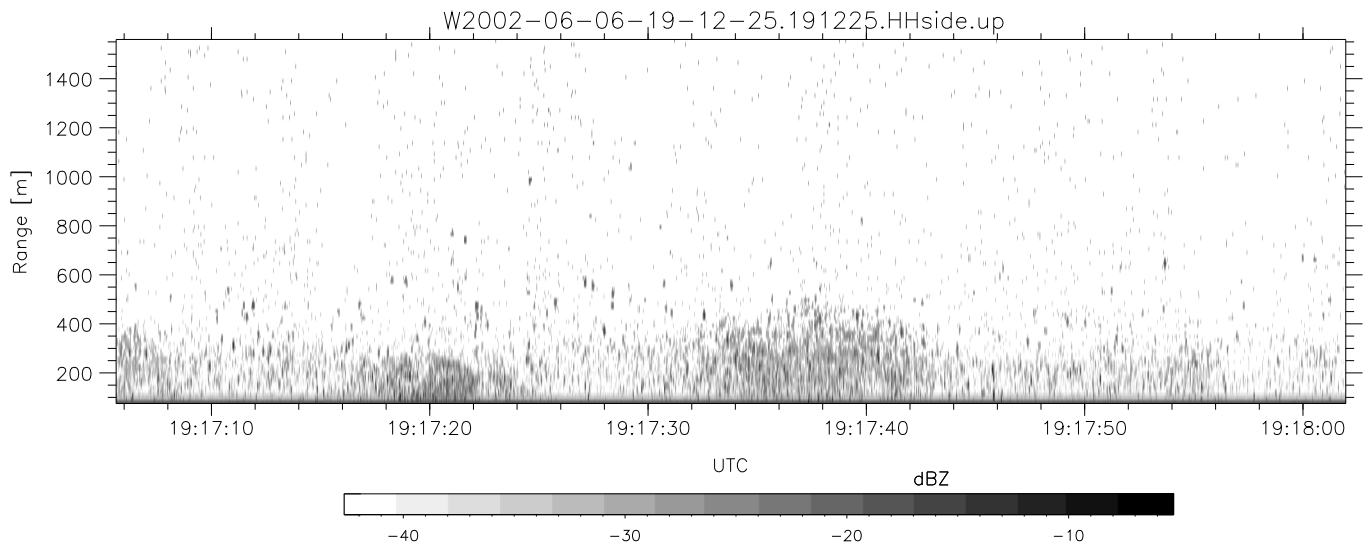
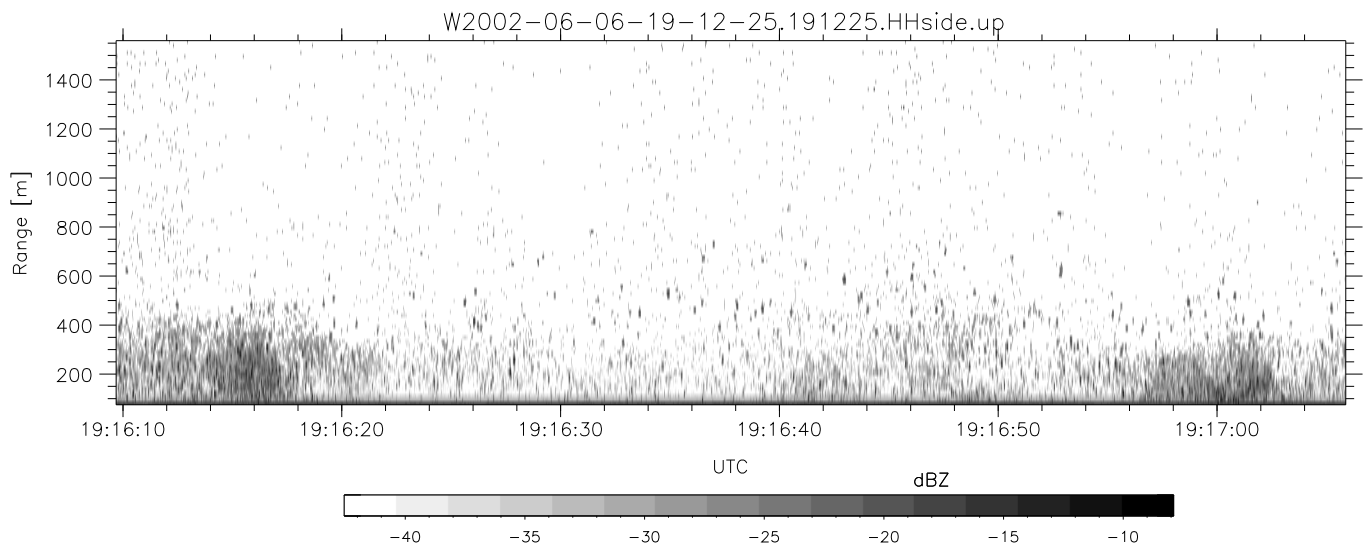
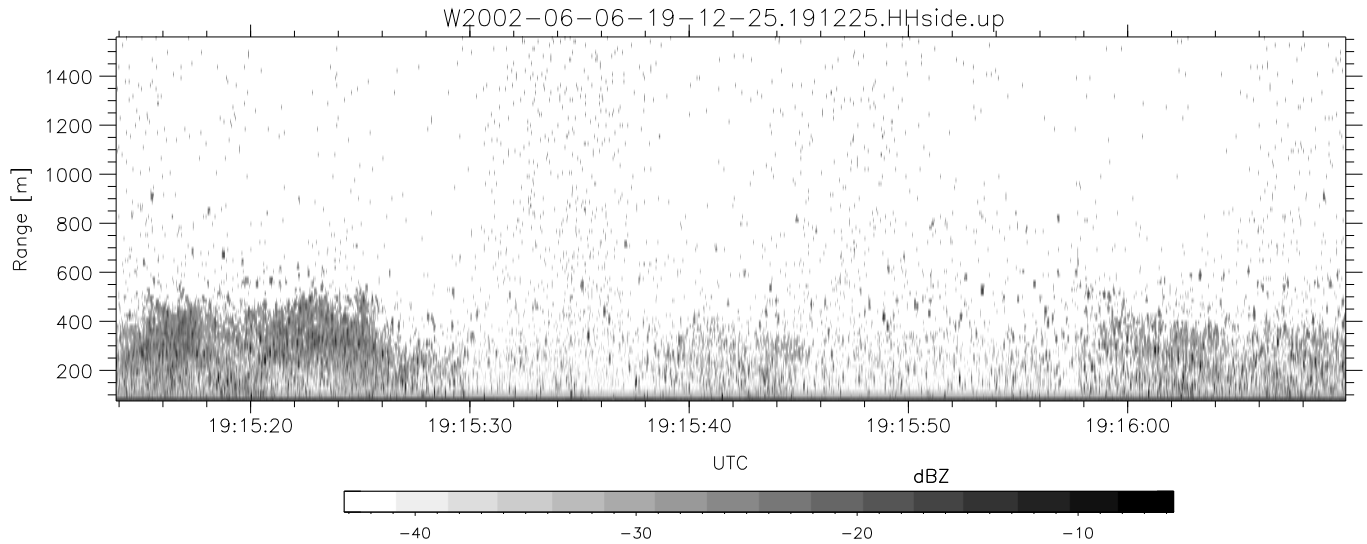


IHOP 2002 (dual-antenna config, modes 1,3,4,7) Data (cal: 49.0,50.0)

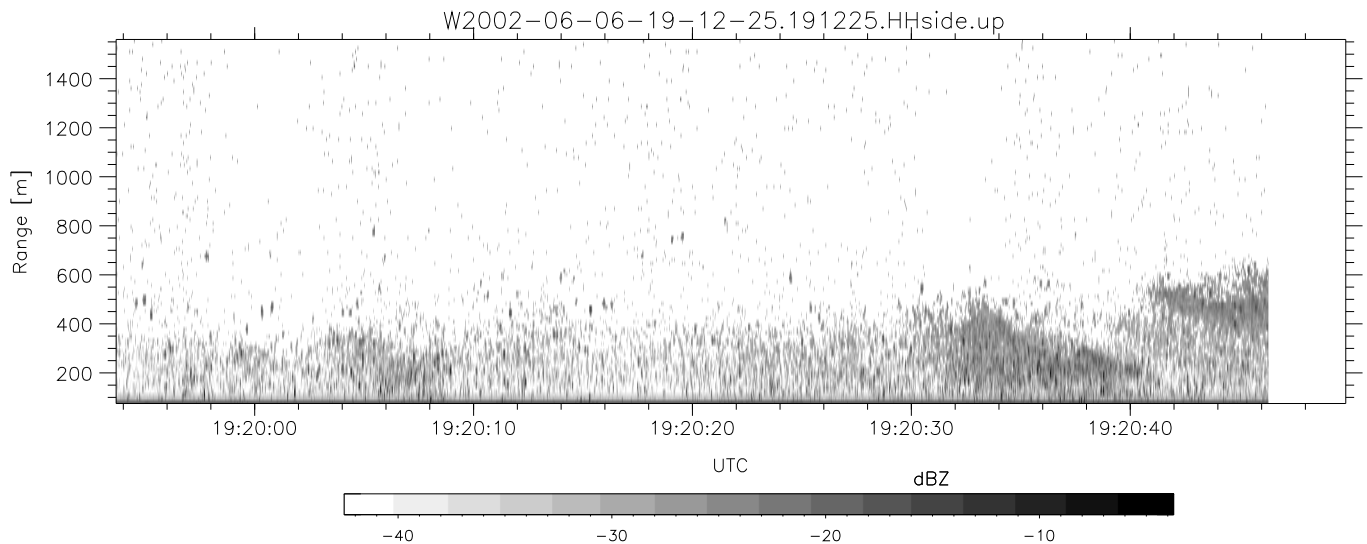
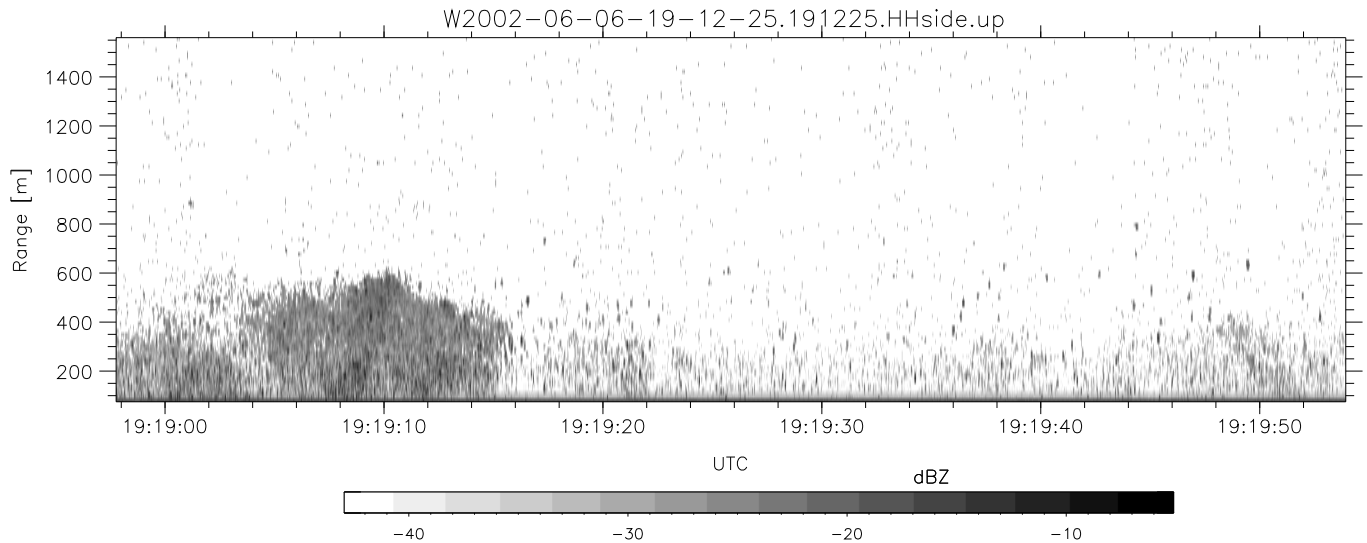
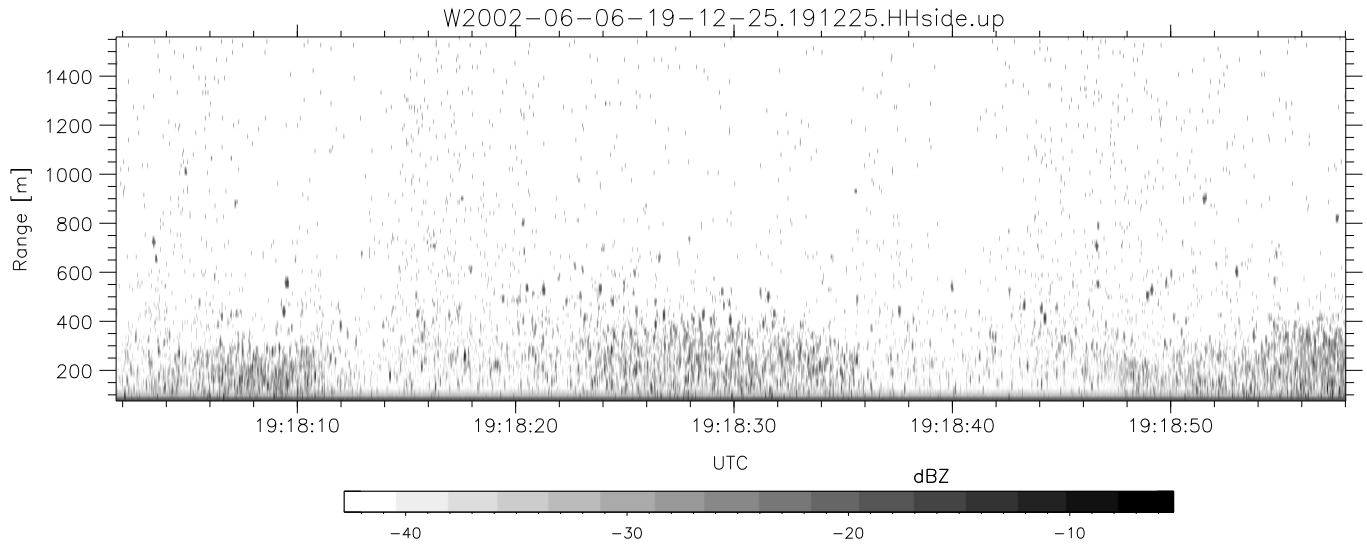
W2002-06-06-19-12-25 - PPMAG4  
 IRIG:1,UTC: 19:12:25.63 to 19:49:36.10, Dur: 2231s  
 TimeLngth: 2230.47s, TimeInt: 29ms (34.1pps)  
 TimeCor=-13.0s, DSPDif(mn,min,mx):29,28,379  
 PPS(min,max,std): 23,36,2.31  
 Prof: 208 to 76248, NumProf(t/r): 76040/17069  
 ProcTime/Recs: 19:12:25-19:20:46/0-17068  
 MxACQtime: 33ms; DRate: 190.8KB/s; Flags: 0, 0, 0  
 Pulse: 275ns, IFfilt: 5.0MHz; ppPol: HH HV VV  
 TxPol: HHVV, PRF: 20 10 20 10 kHz  
 Range: Delay 75m, Spacing 15m, Gates 100  
 Ave. Pulses: 84, Rng/Prof Aspect@90m/s: 5.7

	Min	Max	Mean	Std	Varc%
hhN(dB)	-67.69	-64.13	-65.70	-75.73	9.9
vvN(dB)	-68.03	-64.76	-66.30	-76.33	9.9
hhL(dB)	-11.30	-7.50	-8.89	-19.92	7.9
vvL(dB)	-34.96	-15.86	-22.31	-23.58	74.6
ppN(m/s)	-12.42	12.46	0.02	4.15	
ppT(m/s)	-98.14	98.41	0.12	32.80	
hh/vv(dB)	-NaN	51.88	5.39	35.48	1021
vh/hh(dB)	-NaN	-31.33	-36.29	-37.08	83.2
hv/vv(dB)	-NaN	-29.07	-50.52	-46.25	267.
hnjmp(dB)	-2.52	2.24	-0.09	-8.67	13.9
vnjmp(dB)	-2.59	2.14	-0.07	-8.55	14.2



IHOP 2002 (dual-antenna config, modes 1,3,4,7) Data (cal: 49.0,50.0)

	Min	Max	Mean	Std	Varc%
W2002-06-06-19-12-25 - PPMAG4					
IRIG:1,UTC: 19:12:25.63 to 19:49:36.10, Dur: 2231s	hhN (dB)	-67.69 -64.13	-65.70	-75.73	9.9
TimeLngth: 2230.47s, TimeInt: 29ms (34.1pps)	vvN (dB)	-68.03 -64.76	-66.30	-76.33	9.9
TimeCor=-13.0s, DSPDif(mn,min,mx):29,28,379	hhL (dB)	-11.30 -7.50	-8.89	-19.92	7.9
PPS(min,max,std): 23,36,2.31	vvL (dB)	-34.96 -15.86	-22.31	-23.58	74.6
Prof: 208 to 76248, NumProf(t/r): 76040/17069	ppN (m/s)	-12.42 12.46	0.02	4.15	
ProcTime/Recs: 19:12:25-19:20:46/0-17068	ppT (m/s)	-98.14 98.41	0.12	32.80	
MxACQtime: 33ms; DRate: 190.8KB/s; Flags: 0, 0, 0	hh/vv (dB)	-NaN 51.88	5.39	35.48	1021
Pulse: 275ns, IFfilt: 5.0MHz; ppPol: HH HV VV	vh/hh (dB)	-NaN -31.33	-36.29	-37.08	83.2
TxPol: HHVV, PRF: 20 10 20 10 kHz	hv/vv (dB)	-NaN -29.07	-50.52	-46.25	267.
Range: Delay 75m, Spacing 15m, Gates 100	hn_jmp (dB)	-2.52 2.24	-0.09	-8.67	13.9
Ave. Pulses: 84, Rng/Prof Aspect@90m/s: 5.7	vn_jmp (dB)	-2.59 2.14	-0.07	-8.55	14.2



IHOP 2002 (dual-antenna config, modes 1,3,4,7) Data (cal: 49.0,50.0)

	Min	Max	Mean	Std	Varc%
W2002-06-06-19-12-25 - PPMAG4					
IRIG:1,UTC: 19:12:25.63 to 19:49:36.10, Dur: 2231s	hhN (dB)	-67.69 -64.13	-65.70	-75.73	9.9
TimeLngth: 2230.47s, TimeInt: 29ms (34.1pps)	vvN (dB)	-68.03 -64.76	-66.30	-76.33	9.9
TimeCor=-13.0s, DSPDif(mn,min,mx):29,28,379	hhL (dB)	-11.30 -7.50	-8.89	-19.92	7.9
PPS(min,max,std): 23,36,2.31	vvL (dB)	-34.96 -15.86	-22.31	-23.58	74.6
Prof: 208 to 76248, NumProf(t/r): 76040/17069	ppN (m/s)	-12.42 12.46	0.02	4.15	
ProcTime/Recs: 19:12:25-19:20:46/0-17068	ppT (m/s)	-98.14 98.41	0.12	32.80	
MxACQtime: 33ms; DRate: 190.8KB/s; Flags: 0, 0, 0	hh/vv (dB)	-NaN 51.88	5.39	35.48	1021
Pulse: 275ns, IFilt: 5.0MHz; ppPol: HH HV VV	vh/hh (dB)	-NaN -31.33	-36.29	-37.08	83.2
TxPol: HHVV, PRF: 20 10 20 10 kHz	hv/vv (dB)	-NaN -29.07	-50.52	-46.25	267.
Range: Delay 75m, Spacing 15m, Gates 100	hn/jmp (dB)	-2.52 2.24	-0.09	-8.67	13.9
Ave. Pulses: 84, Rng/Prof Aspect@90m/s: 5.7	vn/jmp (dB)	-2.59 2.14	-0.07	-8.55	14.2