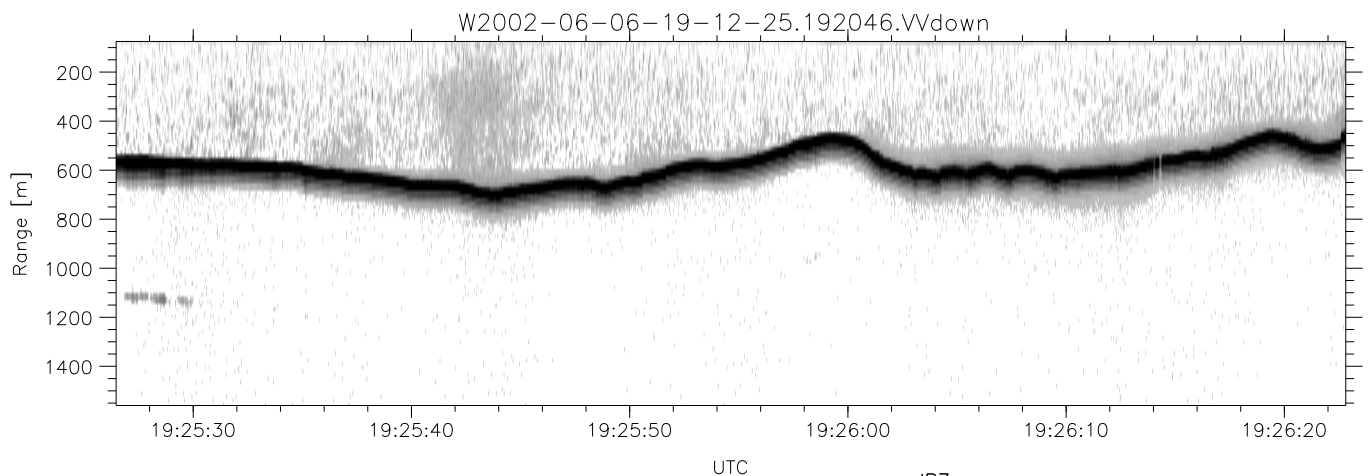
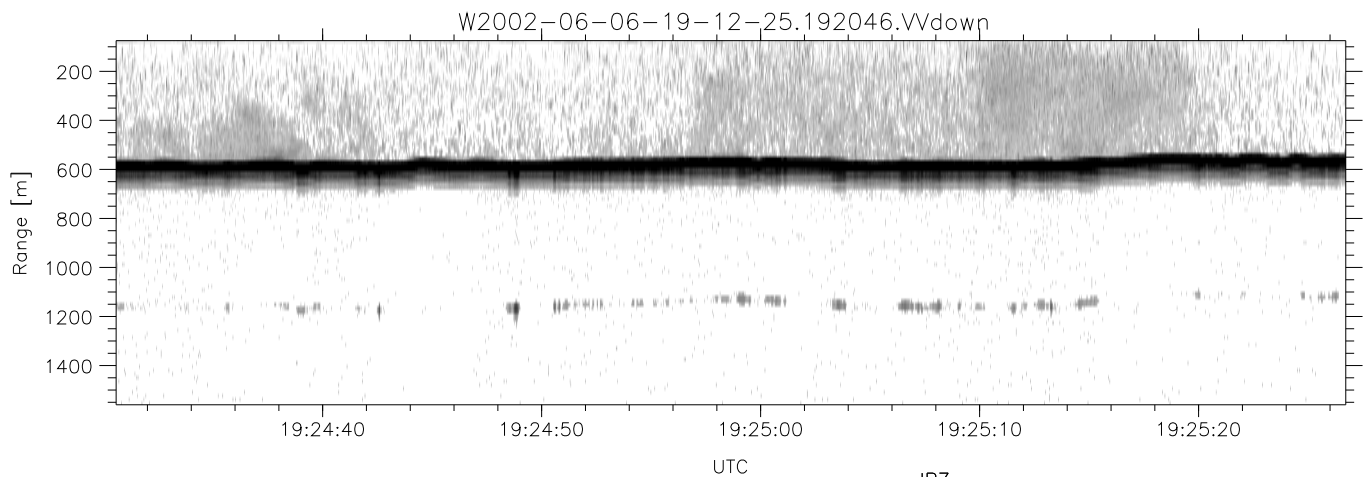
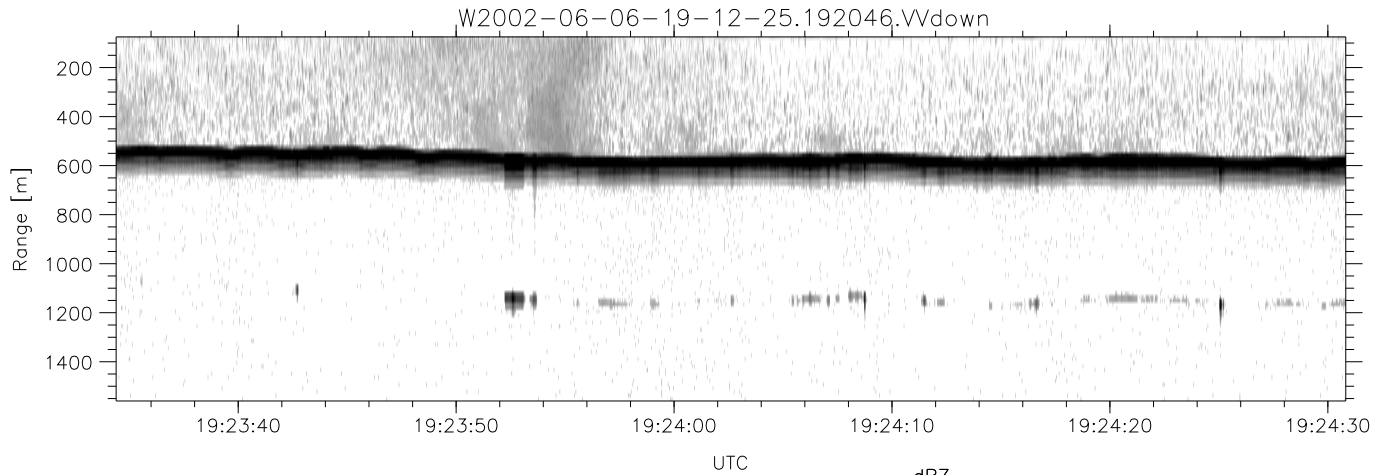


IHOP 2002 (dual-antenna config, modes 1,3,4,7) Data (cal: 49.0,50.0)

W2002-06-06-19-12-25 - PPMAG4  
 IRIG:1,UTC: 19:12:25.63 to 19:49:36.10, Dur: 2231s  
 TimeLngth: 2230.47s, TimeInt: 29ms (34.1pps)  
 TimeCor=-13.0s, DSPDif(mn,min,mx):29,28,386  
 PPS(min,max,std): 22,36,2.36  
 Prof: 208 to 76248, NumProf(t/r): 76040/17069  
 ProcTime/Recs: 19:20:46-19:29:07/17069-34137  
 MxACQtime: 33ms; DRate: 190.8KB/s; Flags: 0, 0, 0  
 Pulse: 275ns, IFfilt: 5.0MHz; ppPol: HH HV VV  
 TxPol: HHVV, PRF: 20 10 20 10 kHz  
 Range: Delay 75m, Spacing 15m, Gates 100  
 Ave. Pulses: 84, Rng/Prof Aspect@90m/s: 5.7

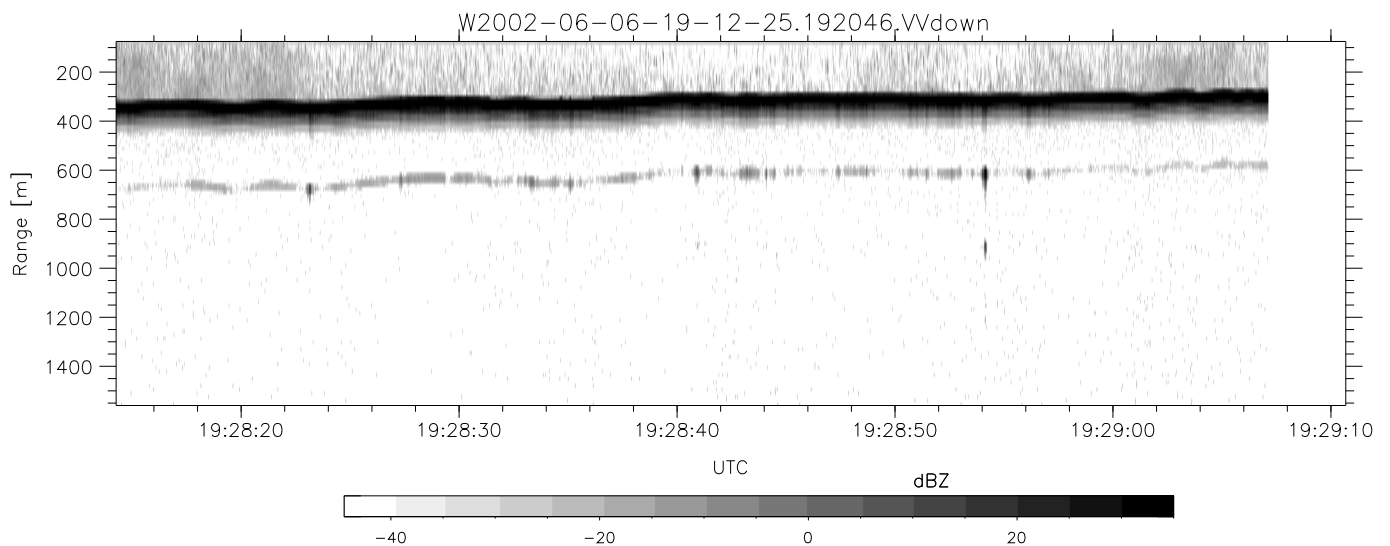
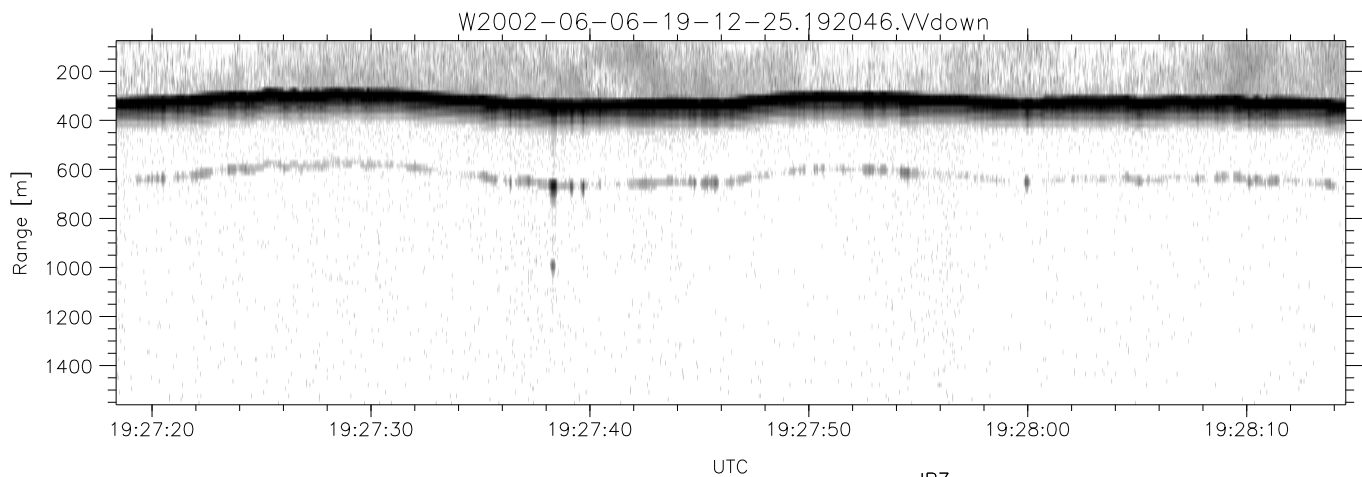
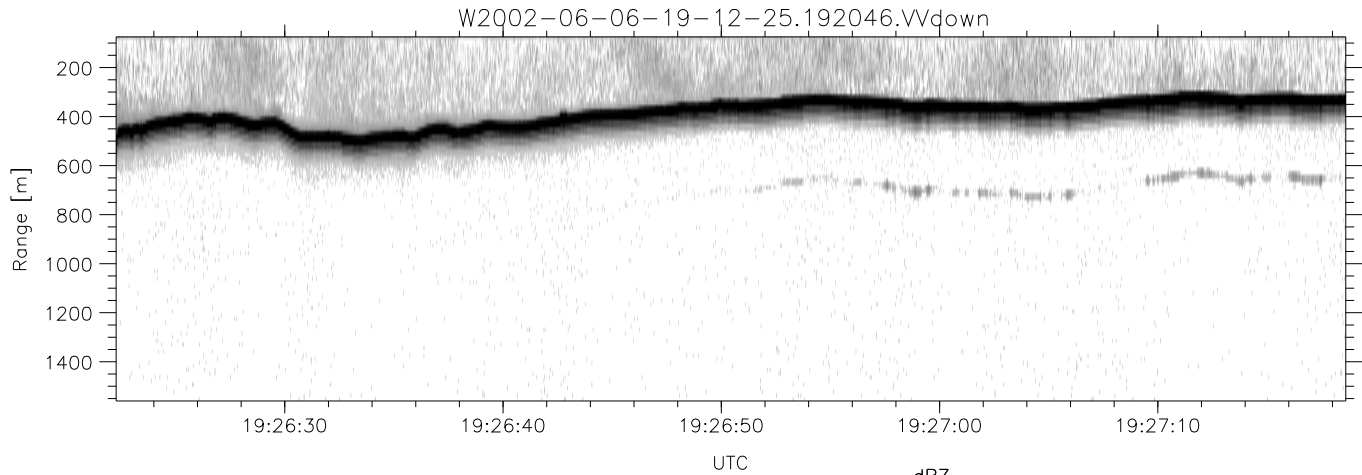
|           | Min    | Max    | Mean   | Std    | Varc% |
|-----------|--------|--------|--------|--------|-------|
| hhN(dB)   | -67.48 | -64.09 | -65.68 | -75.72 | 9.9   |
| vvN(dB)   | -68.01 | -64.61 | -66.31 | -76.29 | 10.0  |
| hhL(dB)   | -12.86 | -7.80  | -9.20  | -18.67 | 11.3  |
| vvL(dB)   | -34.42 | -14.25 | -20.49 | -21.47 | 79.8  |
| ppN(m/s)  | -11.93 | 12.42  | -0.03  | 4.13   |       |
| ppT(m/s)  | -94.26 | 98.14  | -0.26  | 32.65  |       |
| hh/vv(dB) | -NaN   | 52.70  | -NaN   | 39.69  | -526  |
| vh/hh(dB) | -NaN   | -30.62 | -36.97 | -37.21 | 94.8  |
| hv/vv(dB) | -NaN   | -29.32 | -50.38 | -45.87 | 282.  |
| hnjmp(dB) | -1.96  | 2.73   | 0.18   | -8.36  | 14.0  |
| vnjmp(dB) | -2.04  | 2.35   | 0.15   | -8.29  | 14.3  |



IHOP 2002 (dual-antenna config, modes 1,3,4,7) Data (cal: 49.0,50.0)

W2002-06-06-19-12-25 - PPMAG4  
 IRIG:1,UTC: 19:12:25.63 to 19:49:36.10, Dur: 2231s  
 TimeLngth: 2230.47s, TimeInt: 29ms (34.1pps)  
 TimeCor=-13.0s, DSPDif(mn,min,mx):29,28,386  
 PPS(min,max,std): 22,36,2.36  
 Prof: 208 to 76248, NumProf(t/r): 76040/17069  
 ProcTime/Recs: 19:20:46-19:29:07/17069-34137  
 MxACQtime: 33ms; DRate: 190.8KB/s; Flags: 0, 0, 0  
 Pulse: 275ns, IFfilt: 5.0MHz; ppPol: HH HV VV  
 TxPol: HHVV, PRF: 20 10 20 10 kHz  
 Range: Delay 75m, Spacing 15m, Gates 100  
 Ave. Pulses: 84, Rng/Prof Aspect@90m/s: 5.7

|           | Min    | Max    | Mean   | Std    | Varc% |
|-----------|--------|--------|--------|--------|-------|
| hhN(dB)   | -67.48 | -64.09 | -65.68 | -75.72 | 9.9   |
| vvN(dB)   | -68.01 | -64.61 | -66.31 | -76.29 | 10.0  |
| hhL(dB)   | -12.86 | -7.80  | -9.20  | -18.67 | 11.3  |
| vvL(dB)   | -34.42 | -14.25 | -20.49 | -21.47 | 79.8  |
| ppN(m/s)  | -11.93 | 12.42  | -0.03  | 4.13   |       |
| ppT(m/s)  | -94.26 | 98.14  | -0.26  | 32.65  |       |
| hh/vv(dB) | -NaN   | 52.70  | -NaN   | 39.69  | -526  |
| vh/hh(dB) | -NaN   | -30.62 | -36.97 | -37.21 | 94.8  |
| hv/vv(dB) | -NaN   | -29.32 | -50.38 | -45.87 | 282.  |
| hnjmp(dB) | -1.96  | 2.73   | 0.18   | -8.36  | 14.0  |
| vnjmp(dB) | -2.04  | 2.35   | 0.15   | -8.29  | 14.3  |



IHOP 2002 (dual-antenna config, modes 1,3,4,7) Data (cal: 49.0,50.0)

W2002-06-06-19-12-25 - PPMAG4  
 IRIG:1,UTC: 19:12:25.63 to 19:49:36.10, Dur: 2231s  
 TimeLngth: 2230.47s, TimeInt: 29ms (34.1pps)  
 TimeCor=-13.0s, DSPDif(mn,min,mx):29,28,386  
 PPS(min,max,std): 22,36,2.36  
 Prof: 208 to 76248, NumProf(t/r): 76040/17069  
 ProcTime/Recs: 19:20:46-19:29:07/17069-34137  
 MxACQtime: 33ms; DRate: 190.8KB/s; Flags: 0, 0, 0  
 Pulse: 275ns, IFilt: 5.0MHz; ppPol: HH HV VV  
 TxPol: HHVV, PRF: 20 10 20 10 kHz  
 Range: Delay 75m, Spacing 15m, Gates 100  
 Ave. Pulses: 84, Rng/Prof Aspect@90m/s: 5.7

|           | Min    | Max    | Mean   | Std    | Varc% |
|-----------|--------|--------|--------|--------|-------|
| hhN(dB)   | -67.48 | -64.09 | -65.68 | -75.72 | 9.9   |
| vvN(dB)   | -68.01 | -64.61 | -66.31 | -76.29 | 10.0  |
| hhL(dB)   | -12.86 | -7.80  | -9.20  | -18.67 | 11.3  |
| vvL(dB)   | -34.42 | -14.25 | -20.49 | -21.47 | 79.8  |
| ppN(m/s)  | -11.93 | 12.42  | -0.03  | 4.13   |       |
| ppT(m/s)  | -94.26 | 98.14  | -0.26  | 32.65  |       |
| hh/vv(dB) | -NaN   | 52.70  | -NaN   | 39.69  | -526  |
| vh/hh(dB) | -NaN   | -30.62 | -36.97 | -37.21 | 94.8  |
| hv/vv(dB) | -NaN   | -29.32 | -50.38 | -45.87 | 282.  |
| hnjmp(dB) | -1.96  | 2.73   | 0.18   | -8.36  | 14.0  |
| vnjmp(dB) | -2.04  | 2.35   | 0.15   | -8.29  | 14.3  |