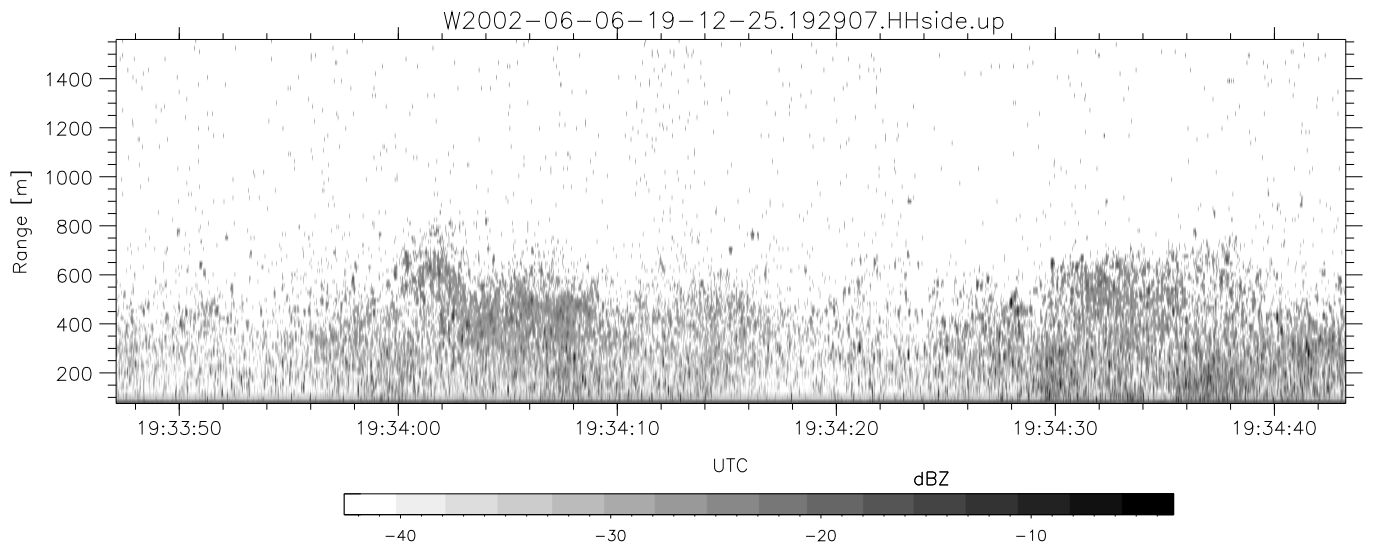
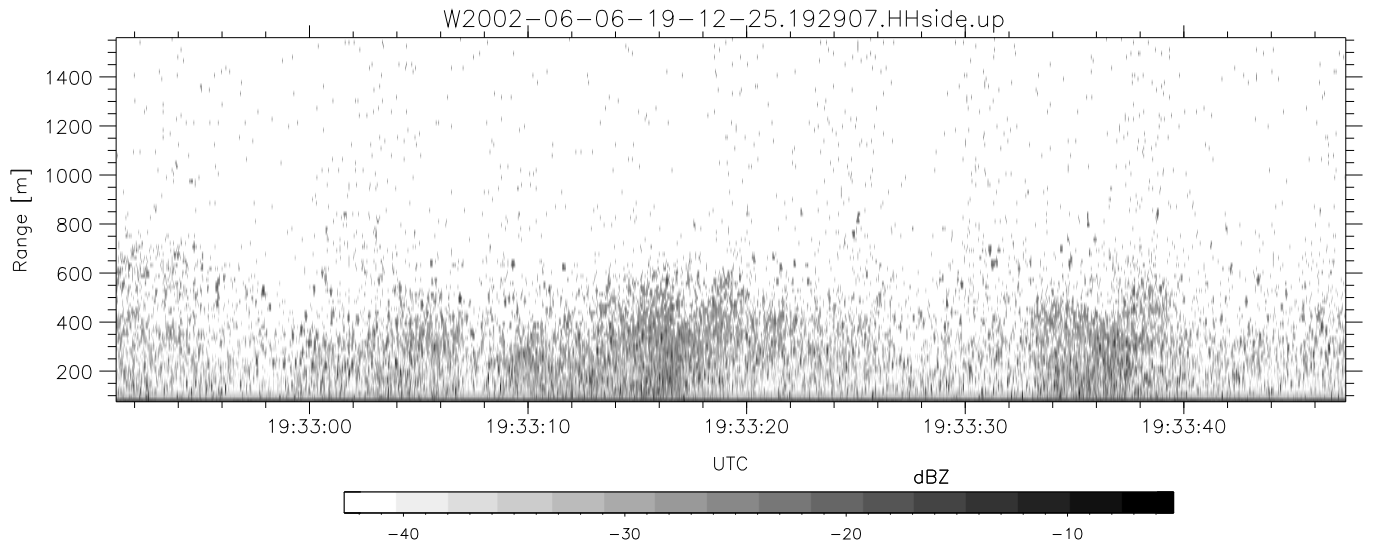
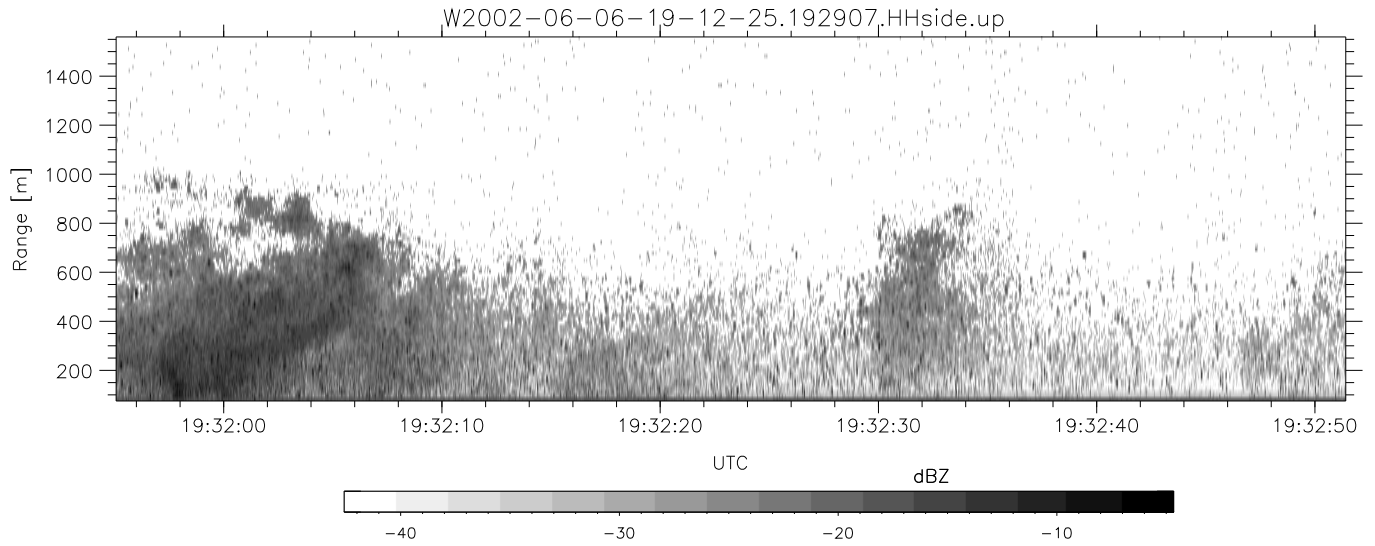


IHOP 2002 (dual-antenna config, modes 1,3,4,7) Data (cal: 49.0,50.0)

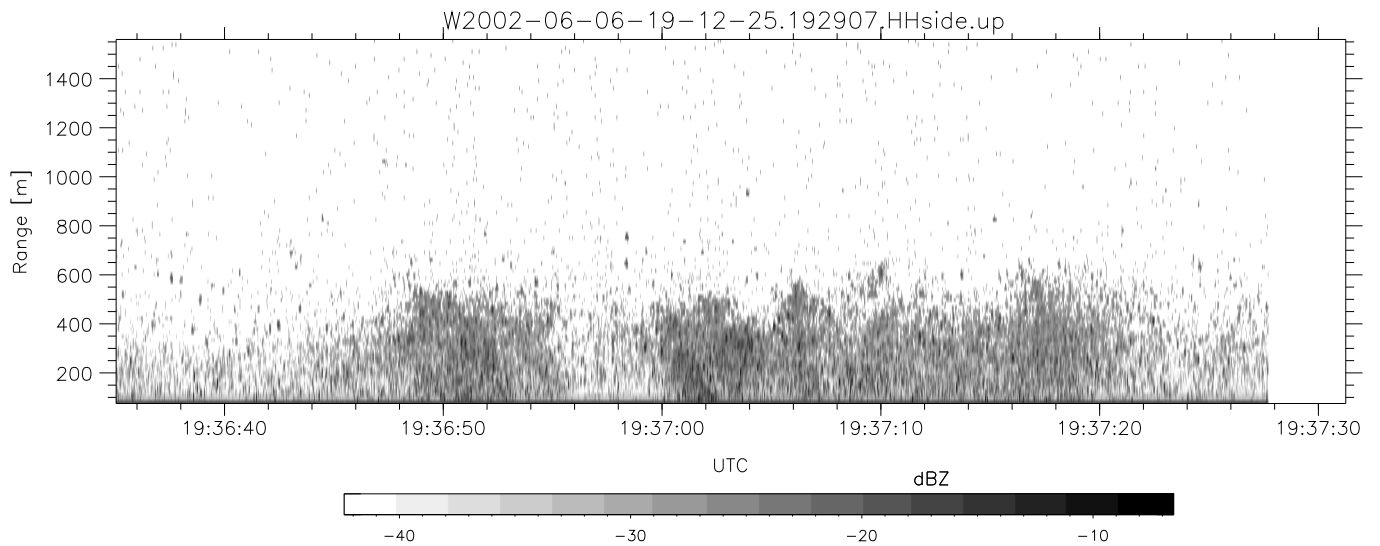
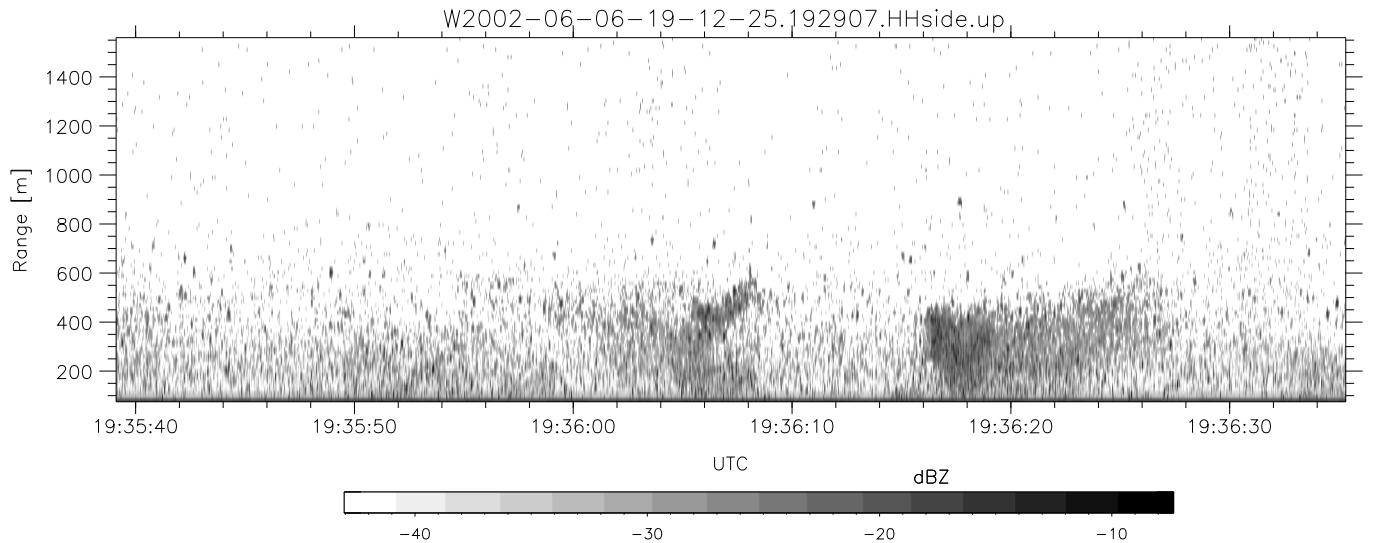
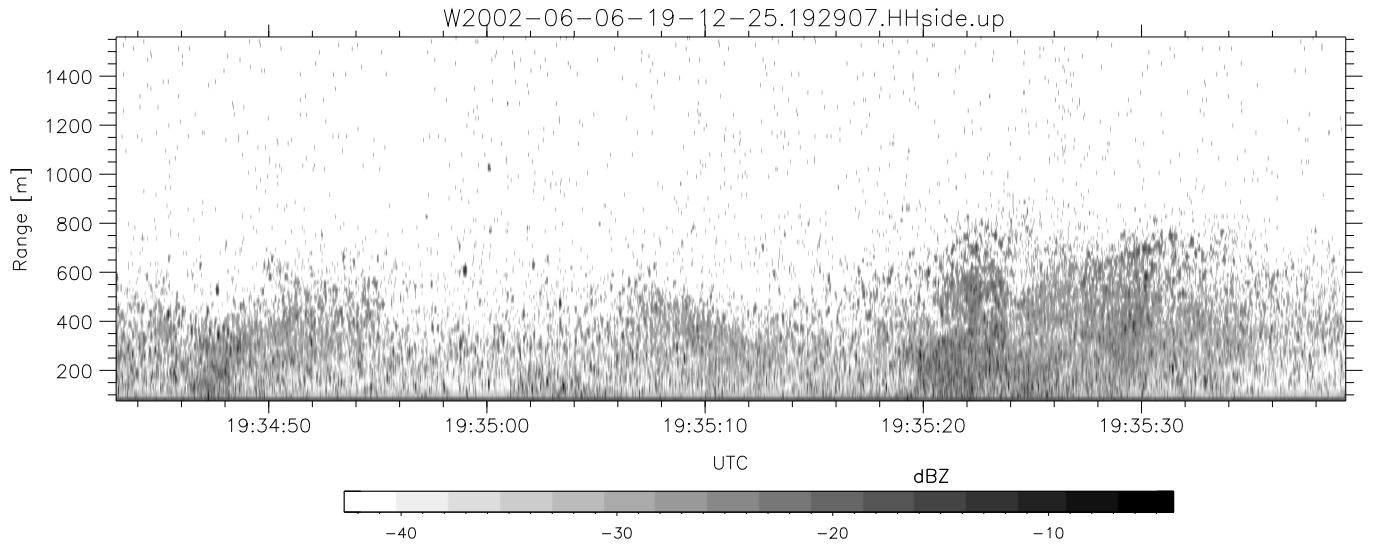
W2002-06-06-19-12-25 - PPMAG4  
 IRIG:1,UTC: 19:12:25.63 to 19:49:36.10, Dur: 2231s  
 TimeLngth: 2230.47s, TimeInt: 29ms (34.1pps)  
 TimeCor=-13.0s, DSPDif(mn,min,mx):29,28,361  
 PPS(min,max,std): 24,36,2.31  
 Prof: 208 to 76248, NumProf(t/r): 76040/17069  
 ProcTime/Recs: 19:29:07-19:37:27/34138-51206  
 MxACQtime: 33ms; DRate: 190.8KB/s; Flags: 0, 0, 0  
 Pulse: 275ns, IFfilt: 5.0MHz; ppPol: HH HV VV  
 TxPol: HHVV, PRF: 20 10 20 10 kHz  
 Range: Delay 75m, Spacing 15m, Gates 100  
 Ave. Pulses: 84, Rng/Prof Aspect@90m/s: 5.7

	Min	Max	Mean	Std	Varc%
hhN(dB)	-67.77	-64.16	-65.70	-75.71	10.0
vvN(dB)	-68.09	-64.69	-66.33	-76.34	10.0
hhL(dB)	-12.66	-7.86	-9.46	-18.51	12.5
vvL(dB)	-23.74	-14.36	-17.10	-23.50	22.9
ppN(m/s)	-12.25	12.58	-0.04	4.16	
ppT(m/s)	-96.81	99.40	-0.33	32.86	
hh/vv(dB)	-NaN	80.67	34.61	57.63	2002
vh/hh(dB)	-NaN	-30.12	-35.88	-36.58	85.0
hv/vv(dB)	-NaN	-24.71	-49.34	-44.33	317.
hnjmp(dB)	-2.39	2.24	-0.09	-8.59	14.1
vnjmp(dB)	-2.38	1.93	-0.08	-8.61	14.0



IHOP 2002 (dual-antenna config, modes 1,3,4,7) Data (cal: 49.0,50.0)

	Min	Max	Mean	Std	Varc%	
W2002-06-06-19-12-25 - PPMAG4						
IRIG:1,UTC: 19:12:25.63 to 19:49:36.10, Dur: 2231s	hhN (dB)	-67.77	-64.16	-65.70	-75.71	10.0
TimeLngth: 2230.47s, TimeInt: 29ms (34.1pps)	vvN (dB)	-68.09	-64.69	-66.33	-76.34	10.0
TimeCor=-13.0s, DSPDif(mn,min,mx):29,28,361	hhL (dB)	-12.66	-7.86	-9.46	-18.51	12.5
PPS(min,max,std): 24,36,2.31	vvL (dB)	-23.74	-14.36	-17.10	-23.50	22.9
Prof: 208 to 76248, NumProf(t/r): 76040/17069	ppN (m/s)	-12.25	12.58	-0.04	4.16	
ProcTime/Recs: 19:29:07-19:37:27/34138-51206	ppT (m/s)	-96.81	99.40	-0.33	32.86	
MxACQtime: 33ms; DRate: 190.8KB/s; Flags: 0, 0, 0	hh/vv (dB)	-NaN	80.67	34.61	57.63	2002
Pulse: 275ns, IFfilt: 5.0MHz; ppPol: HH HV VV	vh/hh (dB)	-NaN	-30.12	-35.88	-36.58	85.0
TxPol: HHVV, PRF: 20 10 20 10 kHz	hv/vv (dB)	-NaN	-24.71	-49.34	-44.33	317.
Range: Delay 75m, Spacing 15m, Gates 100	hn/jmp (dB)	-2.39	2.24	-0.09	-8.59	14.1
Ave. Pulses: 84, Rng/Prof Aspect@90m/s: 5.7	vn/jmp (dB)	-2.38	1.93	-0.08	-8.61	14.0



IHOP 2002 (dual-antenna config, modes 1,3,4,7) Data (cal: 49.0,50.0)

	Min	Max	Mean	Std	Varc%
W2002-06-06-19-12-25 - PPMAG4					
IRIG:1,UTC: 19:12:25.63 to 19:49:36.10, Dur: 2231s					
TimeLngth: 2230.47s, TimeInt: 29ms (34.1pps)					
TimeCor=-13.0s, DSPDif(mn,min,mx):29,28,361					
PPS(min,max,std): 24,36,2.31					
Prof: 208 to 76248, NumProf(t/r): 76040/17069					
ProcTime/Recs: 19:29:07-19:37:27/34138-51206					
MxACQtime: 33ms; DRate: 190.8KB/s; Flags: 0, 0, 0					
Pulse: 275ns, IFfilt: 5.0MHz; ppPol: HH HV VV					
TxPol: HHVV, PRF: 20 10 20 10 kHz					
Range: Delay 75m, Spacing 15m, Gates 100					
Ave. Pulses: 84, Rng/Prof Aspect@90m/s: 5.7					
hhN(dB)	-67.77	-64.16	-65.70	-75.71	10.0
vvN(dB)	-68.09	-64.69	-66.33	-76.34	10.0
hhL(dB)	-12.66	-7.86	-9.46	-18.51	12.5
vvL(dB)	-23.74	-14.36	-17.10	-23.50	22.9
ppN(m/s)	-12.25	12.58	-0.04	4.16	
ppT(m/s)	-96.81	99.40	-0.33	32.86	
hh/vv(dB)	-NaN	80.67	34.61	57.63	2002
vh/hh(dB)	-NaN	-30.12	-35.88	-36.58	85.0
hv/vv(dB)	-NaN	-24.71	-49.34	-44.33	317.
hnjmp(dB)	-2.39	2.24	-0.09	-8.59	14.1
vnjmp(dB)	-2.38	1.93	-0.08	-8.61	14.0