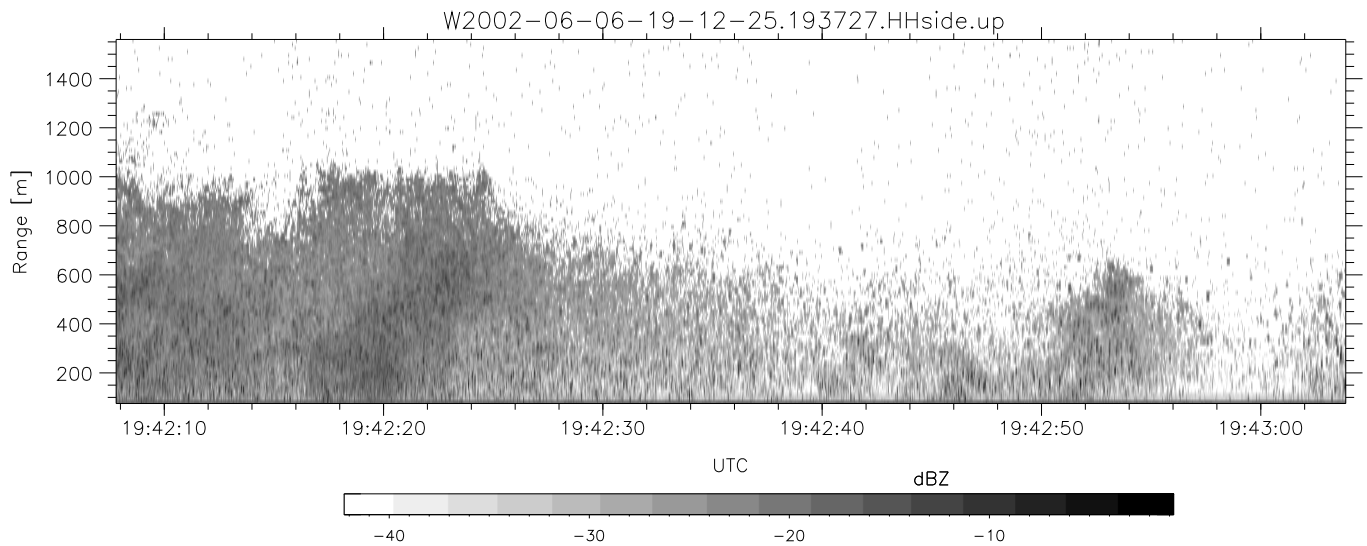
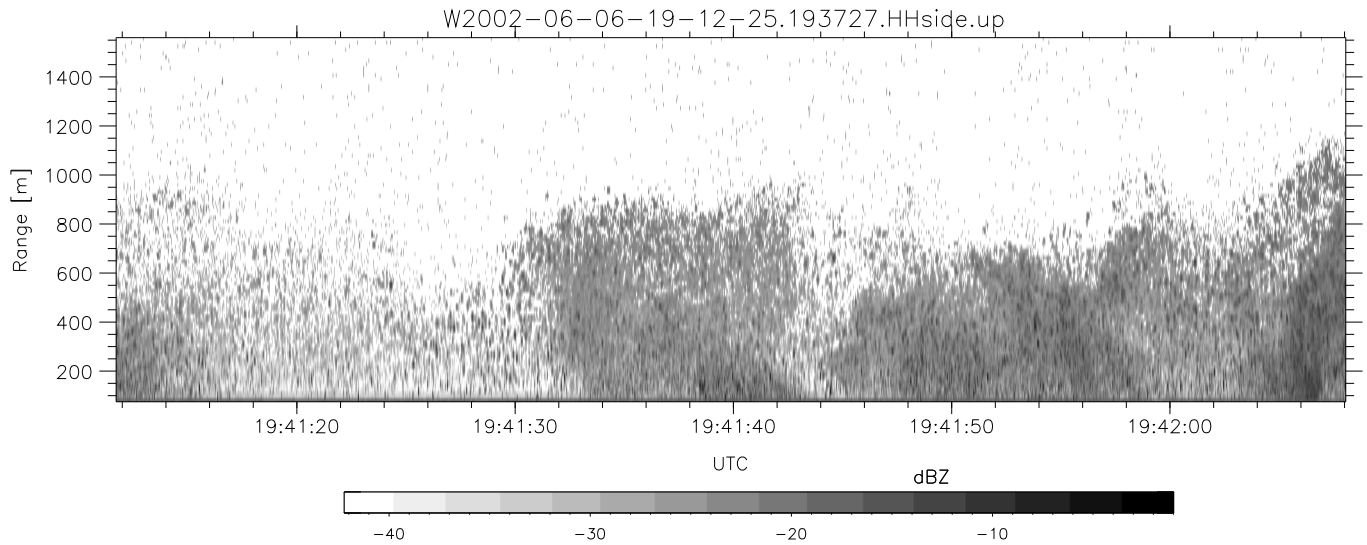
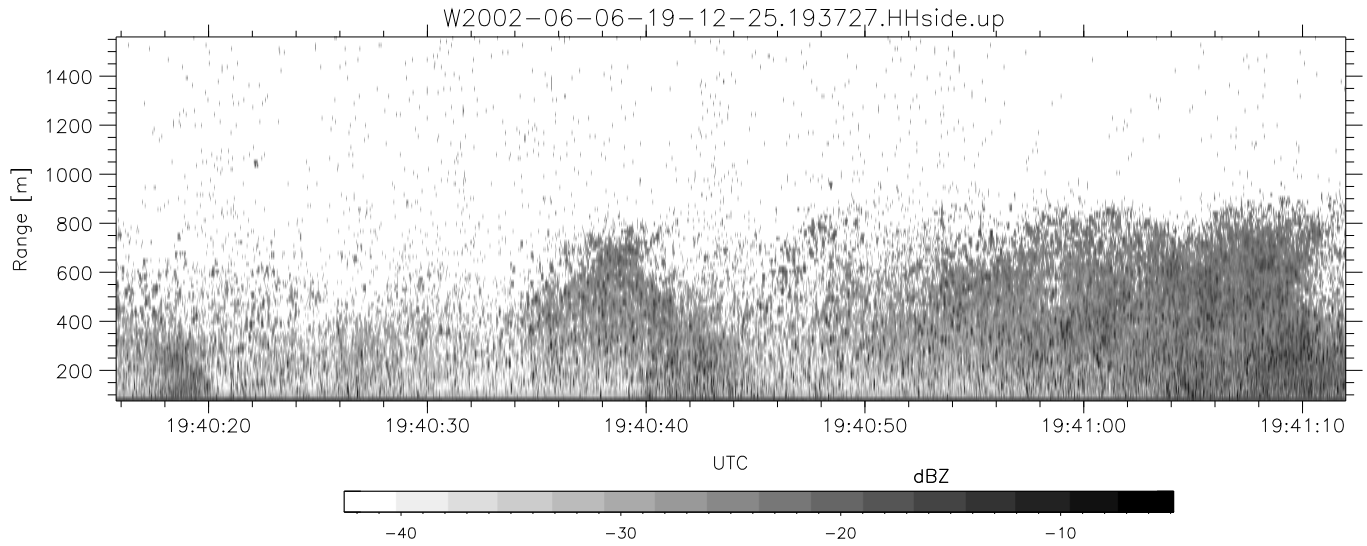


IHOP 2002 (dual-antenna config, modes 1,3,4,7) Data (cal: 49.0,50.0)

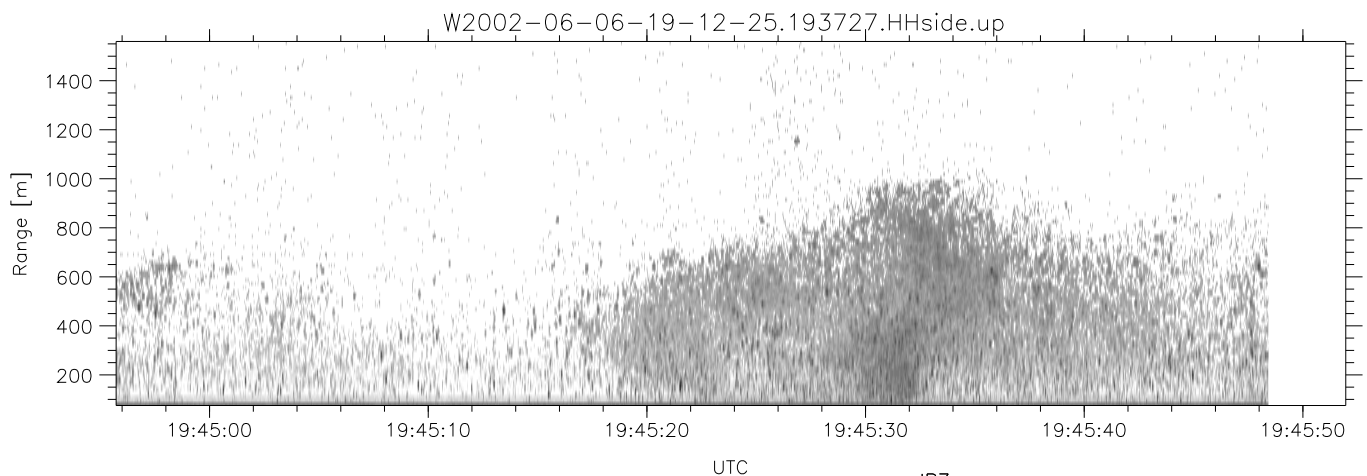
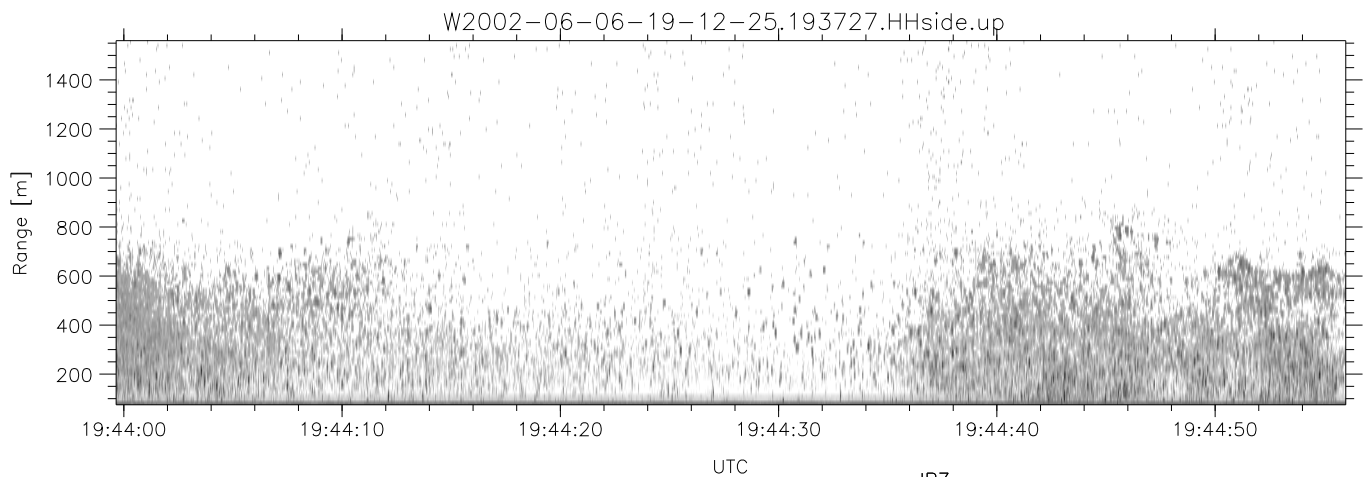
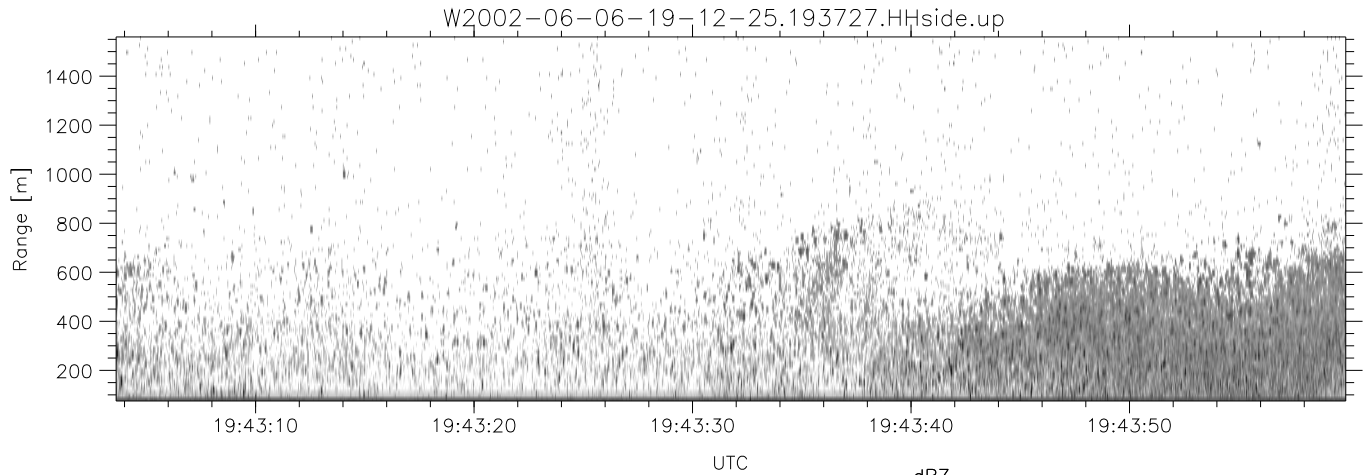
W2002-06-06-19-12-25 - PPMAG4
 IRIG:1,UTC: 19:12:25.63 to 19:49:36.10, Dur: 2231s
 TimeLngth: 2230.47s, TimeInt: 29ms (34.1pps)
 TimeCor=-13.0s, DSPDif(mn,min,mx):29,28,316
 PPS(min,max,std): 24,36,2.28
 Prof: 208 to 76248, NumProf(t/r): 76040/17069
 ProcTime/Recs: 19:37:27-19:45:48/51207-68275
 MxACQtime: 33ms; DRate: 190.8KB/s; Flags: 0, 0, 0
 Pulse: 275ns, IFfilt: 5.0MHz; ppPol: HH HV VV
 TxPol: HHVV, PRF: 20 10 20 10 kHz
 Range: Delay 75m, Spacing 15m, Gates 100
 Ave. Pulses: 84, Rng/Prof Aspect@90m/s: 5.7

	Min	Max	Mean	Std	Varc%
hhN(dB)	-67.43	-64.27	-65.74	-75.79	9.9
vvN(dB)	-68.34	-64.64	-66.34	-76.34	10.0
hhL(dB)	-14.35	-7.94	-9.52	-18.74	12.0
vvL(dB)	-22.77	-14.19	-17.07	-24.03	20.1
ppN(m/s)	-12.06	12.47	-0.07	4.11	
ppT(m/s)	-95.30	98.55	-0.55	32.51	
hh/vv(dB)	-NaN	55.44	14.60	32.26	5843
vh/hh(dB)	-NaN	-29.66	-36.39	-36.70	93.1
hv/vv(dB)	-NaN	-21.19	-50.19	-44.01	414.
hn_jmp(dB)	-2.16	2.54	0.16	-8.42	13.9
vn_jmp(dB)	-2.57	2.35	0.17	-8.35	14.1



IHOP 2002 (dual-antenna config, modes 1,3,4,7) Data (cal: 49.0,50.0)

	Min	Max	Mean	Std	Varc%	
W2002-06-06-19-12-25 - PPMAG4						
IRIG:1,UTC: 19:12:25.63 to 19:49:36.10, Dur: 2231s	hhN (dB)	-67.43	-64.27	-65.74	-75.79	9.9
TimeLngth: 2230.47s, TimeInt: 29ms (34.1pps)	vvN (dB)	-68.34	-64.64	-66.34	-76.34	10.0
TimeCor=-13.0s, DSPDif(mn,min,mx):29,28,316	hhL (dB)	-14.35	-7.94	-9.52	-18.74	12.0
PPS(min,max,std): 24,36,2.28	vvL (dB)	-22.77	-14.19	-17.07	-24.03	20.1
Prof: 208 to 76248, NumProf(t/r): 76040/17069	ppN (m/s)	-12.06	12.47	-0.07	4.11	
ProcTime/Recs: 19:37:27-19:45:48/51207-68275	ppT (m/s)	-95.30	98.55	-0.55	32.51	
MxACQtime: 33ms; DRate: 190.8KB/s; Flags: 0, 0, 0	hh/vv (dB)	-NaN	55.44	14.60	32.26	5843
Pulse: 275ns, IFfilt: 5.0MHz; ppPol: HH HV VV	vh/hh (dB)	-NaN	-29.66	-36.39	-36.70	93.1
TxPol: HHVV, PRF: 20 10 20 10 kHz	hv/vv (dB)	-NaN	-21.19	-50.19	-44.01	414.
Range: Delay 75m, Spacing 15m, Gates 100	hn_jmp (dB)	-2.16	2.54	0.16	-8.42	13.9
Ave. Pulses: 84, Rng/Prof Aspect@90m/s: 5.7	vn_jmp (dB)	-2.57	2.35	0.17	-8.35	14.1



IHOP 2002 (dual-antenna config, modes 1,3,4,7) Data (cal: 49.0,50.0)

W2002-06-06-19-12-25 - PPMAG4	Min	Max	Mean	Std	Varc%	
IRIG:1,UTC: 19:12:25.63 to 19:49:36.10, Dur: 2231s	hhN(dB)	-67.43	-64.27	-65.74	-75.79	9.9
TimeLngth: 2230.47s, TimeInt: 29ms (34.1pps)	vvN(dB)	-68.34	-64.64	-66.34	-76.34	10.0
TimeCor=-13.0s, DSPDif(mn,min,mx):29,28,316	hhL(dB)	-14.35	-7.94	-9.52	-18.74	12.0
PPS(min,max,std): 24,36,2.28	vvL(dB)	-22.77	-14.19	-17.07	-24.03	20.1
Prof: 208 to 76248, NumProf(t/r): 76040/17069	ppN(m/s)	-12.06	12.47	-0.07	4.11	
ProcTime/Recs: 19:37:27-19:45:48/51207-68275	ppT(m/s)	-95.30	98.55	-0.55	32.51	
MxACQtime: 33ms; DRate: 190.8KB/s; Flags: 0, 0, 0	hh/vv(dB)	-NaN	55.44	14.60	32.26	5843
Pulse: 275ns, IFilt: 5.0MHz; ppPol: HH HV VV	vh/hh(dB)	-NaN	-29.66	-36.39	-36.70	93.1
TxPol: HHVV, PRF: 20 10 20 10 kHz	hv/vv(dB)	-NaN	-21.19	-50.19	-44.01	414.
Range: Delay 75m, Spacing 15m, Gates 100	hn_jmp(dB)	-2.16	2.54	0.16	-8.42	13.9
Ave. Pulses: 84, Rng/Prof Aspect@90m/s: 5.7	vn_jmp(dB)	-2.57	2.35	0.17	-8.35	14.1