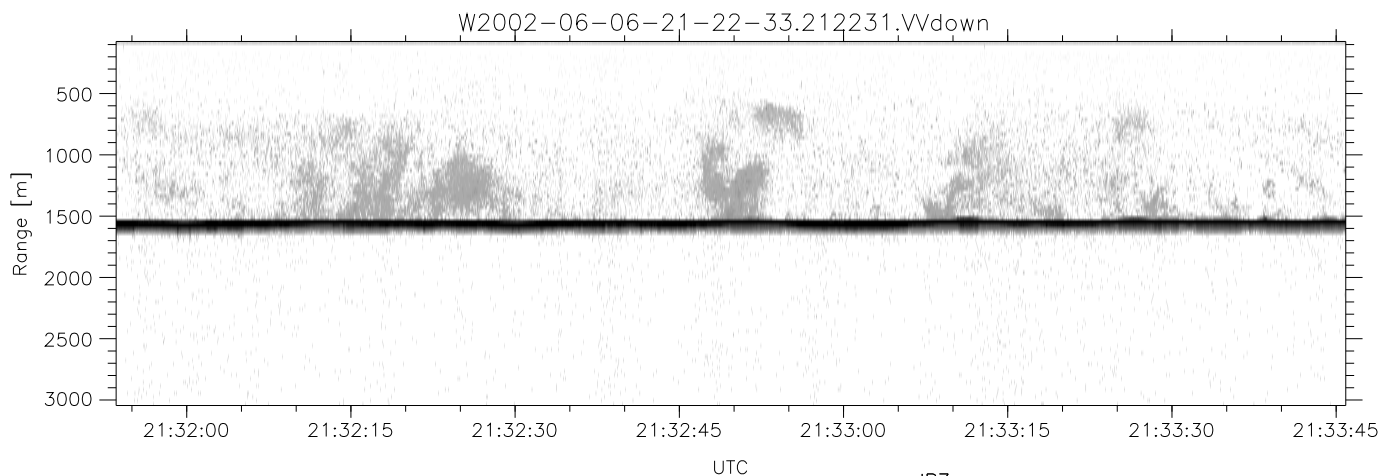
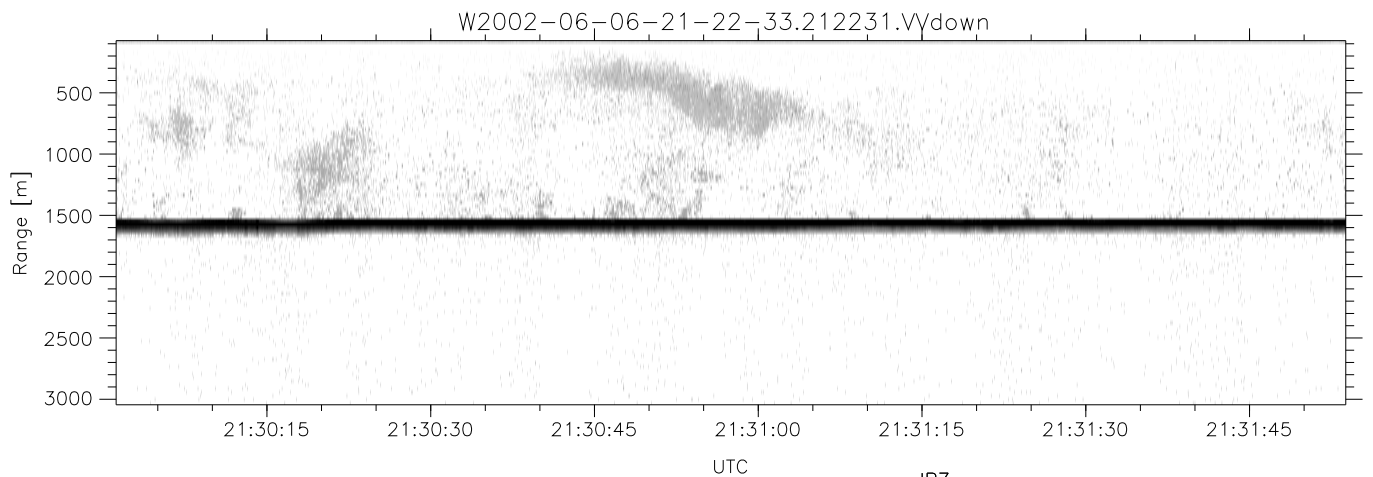
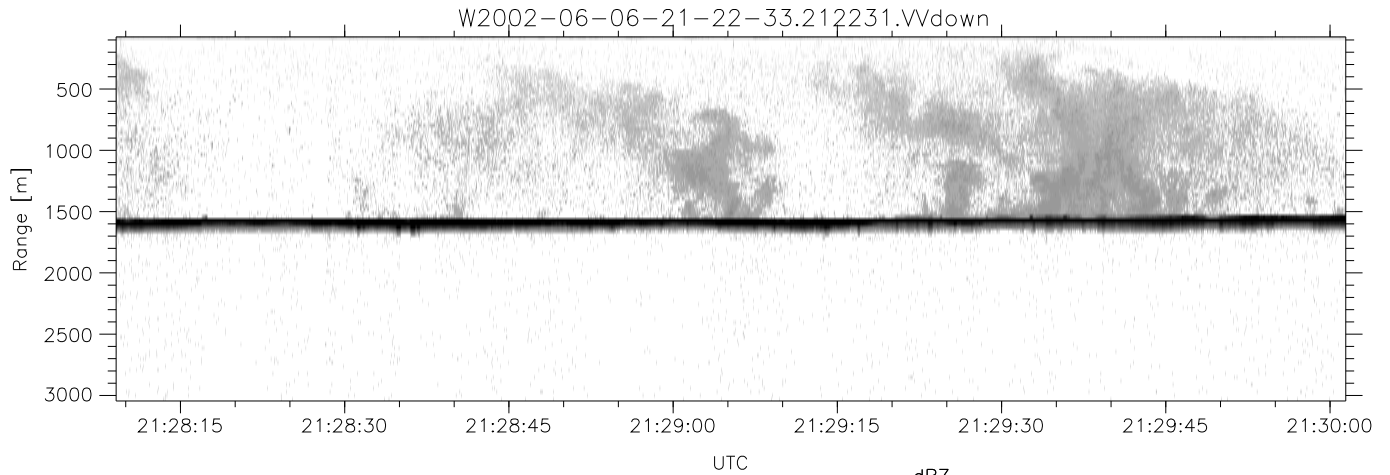


IHOP 2002 (dual-antenna config, modes 1,3,4,7) Data (cal: 55.0,50.0)

W2002-06-06-21-22-33 - PPMAG4
 IRIG:1,UTC: 21:22:31.57 to 21:41:33.59, Dur: 1142s
 TimeLngth: 1142.02s, TimeInt: 28ms (34.8pps)
 TimeCor=-13.0s, DSPDif(mn,min,mx):28,28,320
 PPS(min,max,std): 0,36,2.44
 Prof: 557 to 40346, NumProf(t/r): 39789/34138
 ProcTime/Recs: 21:22:31-21:38:51/0-34137
 MxAcQtime: 33ms; DRate: 195.0KB/s; Flags: 0, 0, 0
 Pulse: 275ns, IFilt: 5.0MHz; ppPol: HH HV VV
 TxPol: HHVV, PRF: 20 10 20 10 kHz
 Range: Delay 75m, Spacing 30m, Gates 100
 Ave. Pulses: 84, Rng/Prof Aspect@90m/s: 11.6

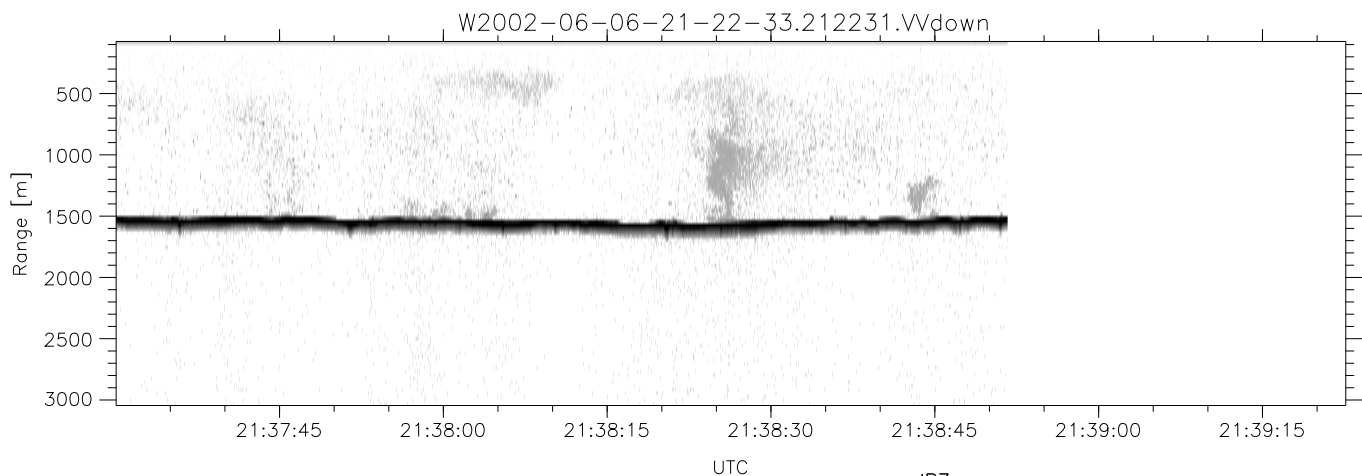
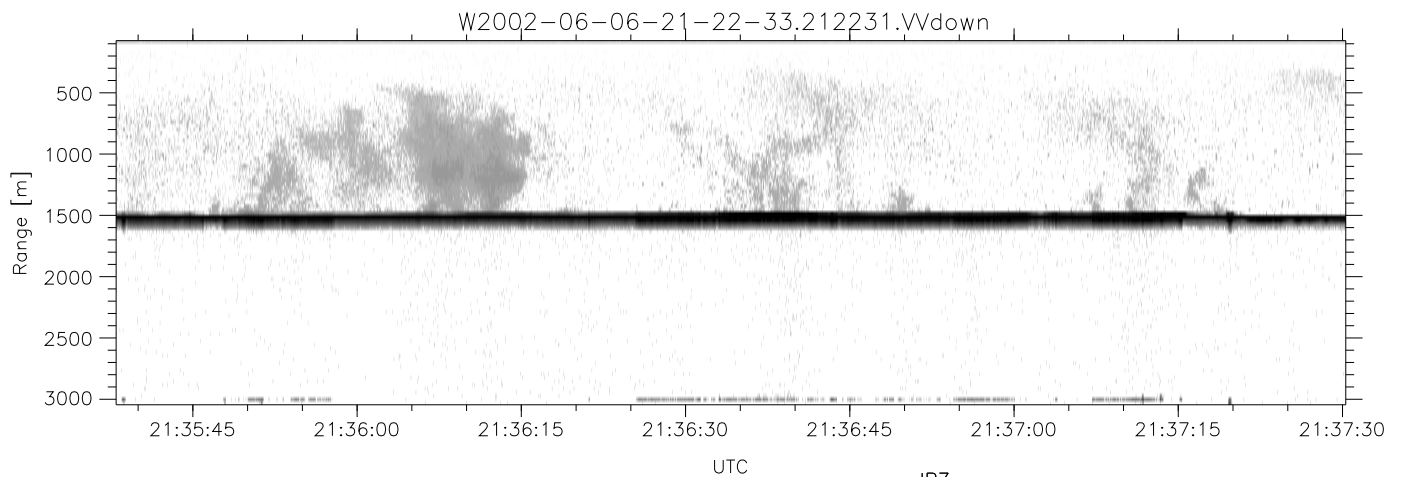
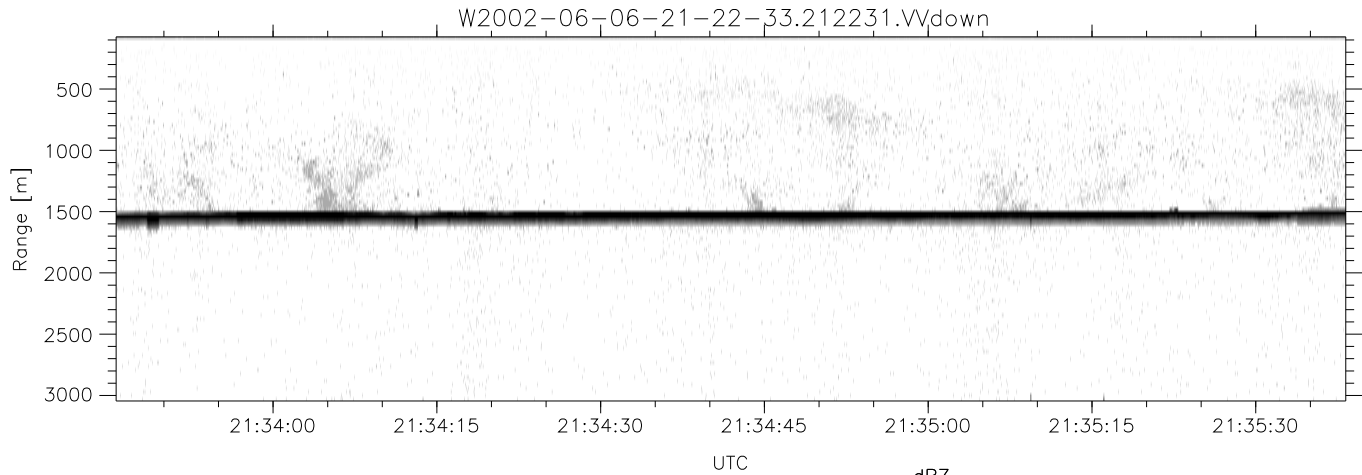
	Min	Max	Mean	Std	Varc%
hhN(dB)	-67.28	-63.65	-65.49	-75.56	9.8
vvN(dB)	-68.26	-64.35	-66.06	-76.08	9.9
hhL(dB)	-21.68	-8.41	-16.15	-20.57	36.1
vvL(dB)	-30.54	-13.37	-19.89	-25.66	26.5
ppN(m/s)	-12.58	12.23	0.02	4.13	
ppT(m/s)	-99.40	96.66	0.19	32.63	
hh/vv(dB)	-NaN	98.38	-NaN	76.40	-617
vh/hh(dB)	-NaN	-30.36	-46.78	-41.82	313.
hv/vv(dB)	-NaN	-33.76	-52.59	-45.93	463.
hnjmp(dB)	-2.06	2.69	0.17	-8.41	13.9
vnjmp(dB)	-2.23	2.32	0.17	-8.40	13.9



IHOP 2002 (dual-antenna config, modes 1,3,4,7) Data (cal: 55.0,50.0)

W2002-06-06-21-22-33 - PPMAG4
 IRIG:1,UTC: 21:22:31.57 to 21:41:33.59, Dur: 1142s
 TimeLngth: 1142.02s, TimeInt: 28ms (34.8pps)
 TimeCor=-13.0s, DSPDif(mn,min,mx):28,28,320
 PPS(min,max,std): 0,36,2.44
 Prof: 557 to 40346, NumProf(t/r): 39789/34138
 ProcTime/Recs: 21:22:31-21:38:51/0-34137
 MxAcQtime: 33ms; DRate: 195.0KB/s; Flags: 0, 0, 0
 Pulse: 275ns, IFilt: 5.0MHz; ppPol: HH HV VV
 TxPol: HHVV, PRF: 20 10 20 10 kHz
 Range: Delay 75m, Spacing 30m, Gates 100
 Ave. Pulses: 84, Rng/Prof Aspect@90m/s: 11.6

	Min	Max	Mean	Std	Varc%
hhN (dB)	-67.28	-63.65	-65.49	-75.56	9.8
vvN (dB)	-68.26	-64.35	-66.06	-76.08	9.9
hhL (dB)	-21.68	-8.41	-16.15	-20.57	36.1
vvL (dB)	-30.54	-13.37	-19.89	-25.66	26.5
ppN (m/s)	-12.58	12.23	0.02	4.13	
ppT (m/s)	-99.40	96.66	0.19	32.63	
hh/vv (dB)	-NaN	98.38	-NaN	76.40	-617
vh/hh (dB)	-NaN	-30.36	-46.78	-41.82	313.
hv/vv (dB)	-NaN	-33.76	-52.59	-45.93	463.
hnjmp (dB)	-2.06	2.69	0.17	-8.41	13.9
vnjmp (dB)	-2.23	2.32	0.17	-8.40	13.9



IHOP 2002 (dual-antenna config, modes 1,3,4,7) Data (cal: 55.0,50.0)

W2002-06-06-21-22-33 - PPMAG4	Min	Max	Mean	Std	Varc%	
IRIG:1,UTC: 21:22:31.57 to 21:41:33.59, Dur: 1142s	hhN (dB)	-67.28	-63.65	-65.49	-75.56	9.8
TimeLngth: 1142.02s, TimeInt: 28ms (34.8pps)	vvN (dB)	-68.26	-64.35	-66.06	-76.08	9.9
TimeCor=-13.0s, DSPDif(mn,min,mx):28,28,320	hhL (dB)	-21.68	-8.41	-16.15	-20.57	36.1
PPS(min,max,std): 0,36,2.44	vvL (dB)	-30.54	-13.37	-19.89	-25.66	26.5
Prof: 557 to 40346, NumProf(t/r): 39789/34138	ppN (m/s)	-12.58	12.23	0.02	4.13	
ProcTime/Recs: 21:22:31-21:38:51/0-34137	ppT (m/s)	-99.40	96.66	0.19	32.63	
MxACQtime: 33ms; DRate: 195.0KB/s; Flags: 0, 0, 0	hh/vv (dB)	-NaN	98.38	-NaN	76.40	-617
Pulse: 275ns, IFilt: 5.0MHz; ppPol: HH HV VV	vh/hh (dB)	-NaN	-30.36	-46.78	-41.82	313.
TxPol: HHVV, PRF: 20 10 20 10 kHz	hv/vv (dB)	-NaN	-33.76	-52.59	-45.93	463.
Range: Delay 75m, Spacing 30m, Gates 100	hnjmp (dB)	-2.06	2.69	0.17	-8.41	13.9
Ave. Pulses: 84, Rng/Prof Aspect@90m/s: 11.6	vnjmp (dB)	-2.23	2.32	0.17	-8.40	13.9