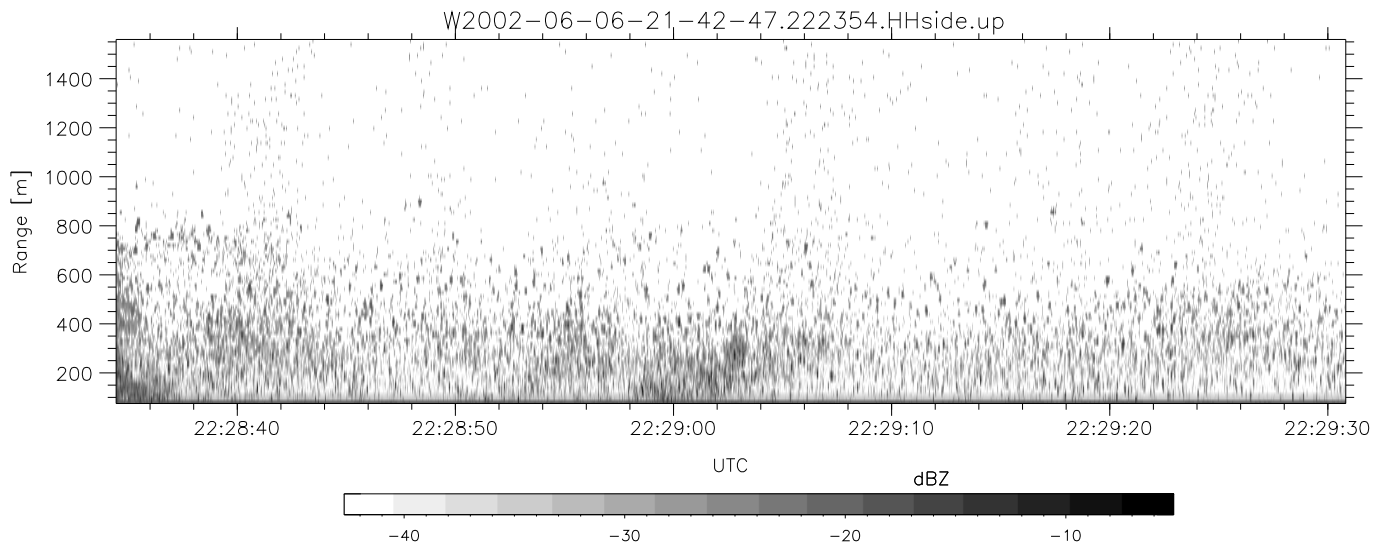
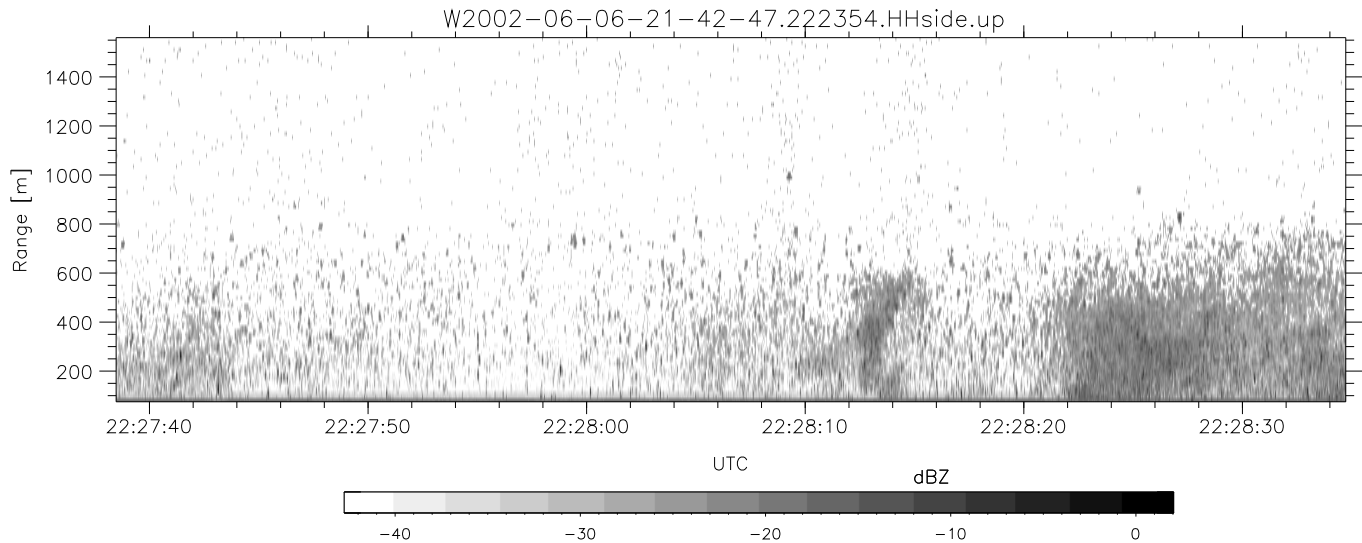
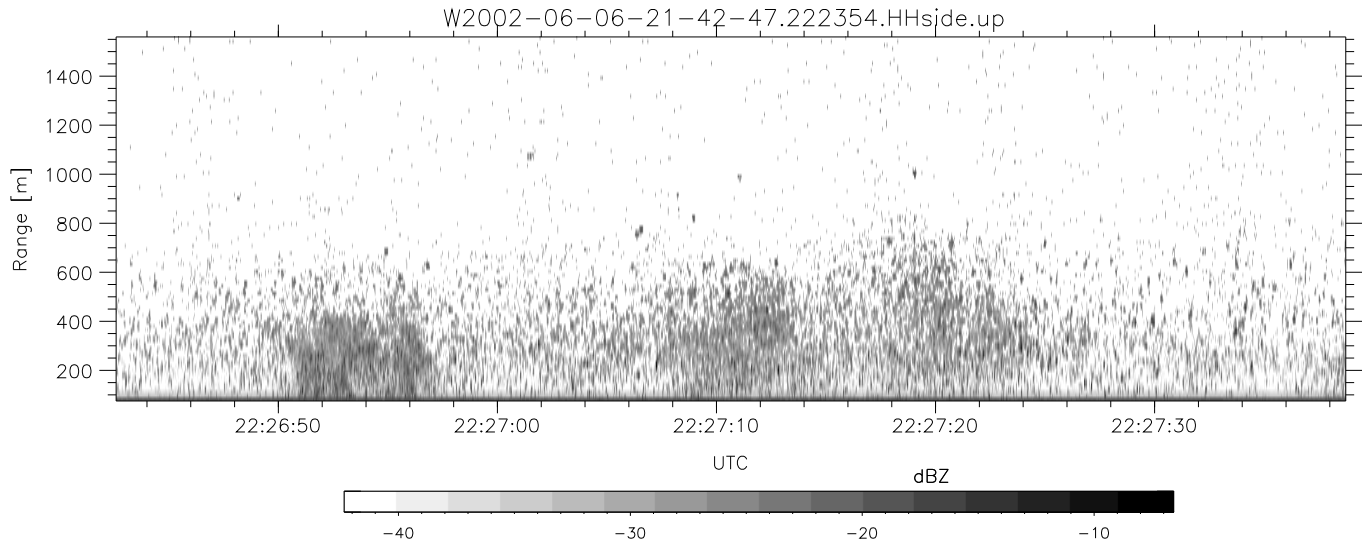


IHOP 2002 (dual-antenna config, modes 1,3,4,7) Data (cal: 49.0,50.0)

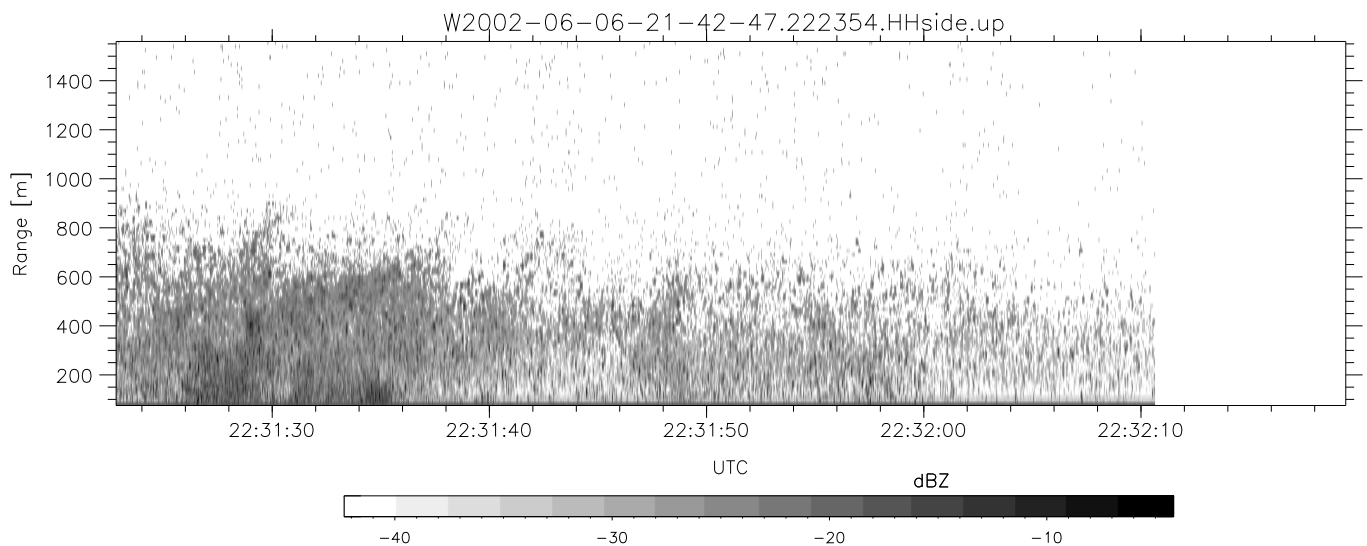
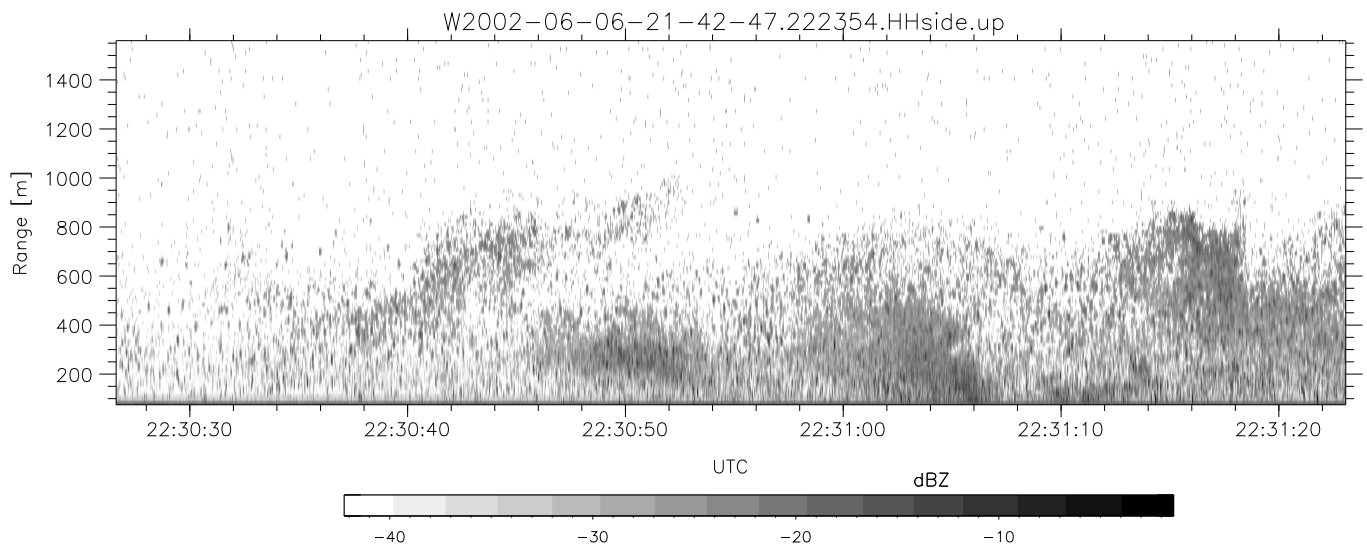
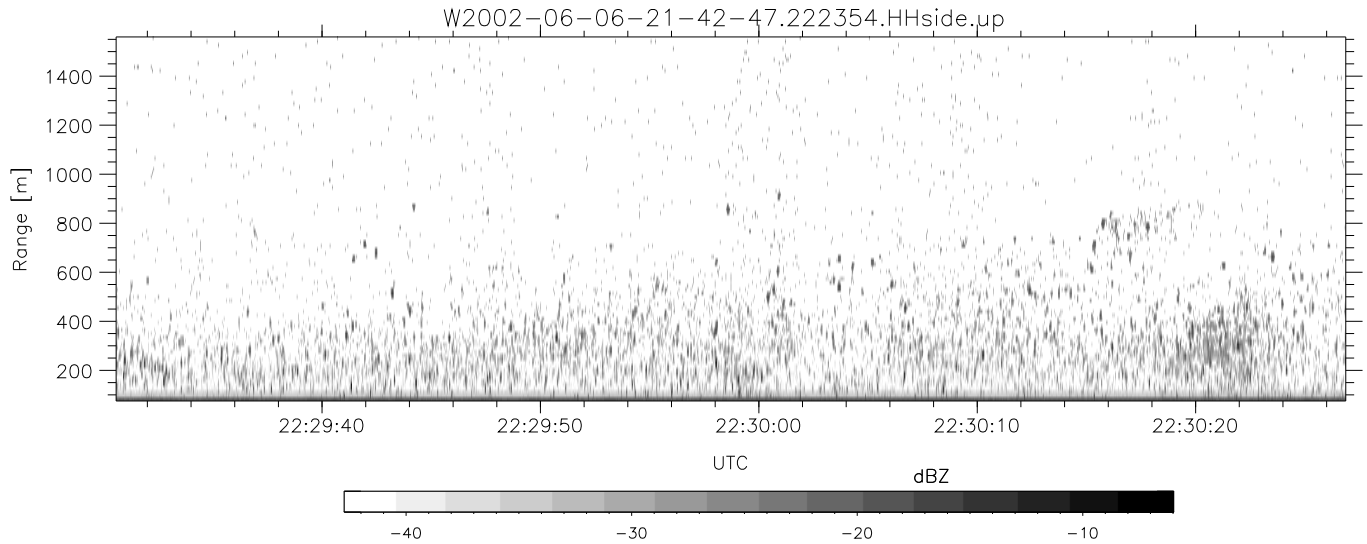
W2002-06-06-21-42-47 - PPMAG4  
 IRIG:1,UTC: 21:42:46.79 to 22:52:21.79, Dur: 4175s  
 TimeLngth: 4175.01s, TimeInt: 29ms (34.4pps)  
 TimeCor=-13.0s, DSPDif(mn,min,mx):28,28,323  
 PPS(min,max,std): 23,36,2.21  
 Prof: 503 to 144291, NumProf(t/r): 143788/17069  
 ProcTime/Recs: 22:23:54-22:32:10/85345-102413  
 MxAcQtime: 33ms; DRate: 192.8KB/s; Flags: 0, 0, 0  
 Pulse: 275ns, IFfilt: 5.0MHz; ppPol: HH HV VV  
 TxPol: HHVV, PRF: 20 10 20 10 kHz  
 Range: Delay 75m, Spacing 15m, Gates 100  
 Ave. Pulses: 84, Rng/Prof Aspect@90m/s: 5.7

	Min	Max	Mean	Std	Varc%
hhN(dB)	-67.41	-64.00	-65.55	-75.58	9.9
vvN(dB)	-67.97	-64.36	-66.16	-76.17	10.0
hhL(dB)	-15.48	-8.82	-10.06	-19.95	10.2
vvL(dB)	-35.32	-15.64	-19.59	-21.58	63.3
ppN(m/s)	-12.46	12.61	0.02	4.17	
ppT(m/s)	-98.41	99.65	0.13	32.94	
hh/vv(dB)	-NaN	52.65	17.34	32.29	3124
vh/hh(dB)	-NaN	-29.81	-36.14	-36.01	102.
hv/vv(dB)	-NaN	-27.51	-50.83	-46.07	298.
hnjmp(dB)	-2.22	2.20	-0.08	-8.65	13.9
vnjmp(dB)	-2.35	2.39	-0.09	-8.62	14.0



IHOP 2002 (dual-antenna config, modes 1,3,4,7) Data (cal: 49.0,50.0)

W2002-06-06-21-42-47 - PPMAG4	Min	Max	Mean	Std	Varc%
IRIG:1,UTC: 21:42:46.79 to 22:52:21.79, Dur: 4175s	-67.41	-64.00	-65.55	-75.58	9.9
TimeLngth: 4175.01s, TimeInt: 29ms (34.4pps)	-67.97	-64.36	-66.16	-76.17	10.0
TimeCor=-13.0s, DSPDif(mn,min,mx):28,28,323	-15.48	-8.82	-10.06	-19.95	10.2
PPS(min,max,std): 23,36,2.21	-35.32	-15.64	-19.59	-21.58	63.3
Prof: 503 to 144291, NumProf(t/r): 143788/17069	ppN(m/s)	-12.46	12.61	0.02	4.17
ProcTime/Recs: 22:23:54-22:32:10/85345-102413	ppT(m/s)	-98.41	99.65	0.13	32.94
MxACQtime: 33ms; DRate: 192.8KB/s; Flags: 0, 0, 0	hh/vv(dB)	-NaN	52.65	17.34	32.29 3124
Pulse: 275ns, IFfilt: 5.0MHz; ppPol: HH HV VV	vh/hh(dB)	-NaN	-29.81	-36.14	-36.01 102.
TxPol: HHVV, PRF: 20 10 20 10 kHz	hv/vv(dB)	-NaN	-27.51	-50.83	-46.07 298.
Range: Delay 75m, Spacing 15m, Gates 100	hnjmp(dB)	-2.22	2.20	-0.08	-8.65 13.9
Ave. Pulses: 84, Rng/Prof Aspect@90m/s: 5.7	vnjmp(dB)	-2.35	2.39	-0.09	-8.62 14.0



IHOP 2002 (dual-antenna config, modes 1,3,4,7) Data (cal: 49.0,50.0)

W2002-06-06-21-42-47 - PPMAG4  
 IRIG:1,UTC: 21:42:46.79 to 22:52:21.79, Dur: 4175s  
 TimeLngth: 4175.01s, TimeInt: 29ms (34.4pps)  
 TimeCor=-13.0s, DSPDif(mn,min,mx):28,28,323  
 PPS(min,max,std): 23,36,2.21  
 Prof: 503 to 144291, NumProf(t/r): 143788/17069  
 ProcTime/Recs: 22:23:54-22:32:10/85345-102413  
 MxACQtime: 33ms; DRate: 192.8KB/s; Flags: 0, 0, 0  
 Pulse: 275ns, IFfilt: 5.0MHz; ppPol: HH HV VV  
 TxPol: HHVV, PRF: 20 10 20 10 kHz  
 Range: Delay 75m, Spacing 15m, Gates 100  
 Ave. Pulses: 84, Rng/Prof Aspect@90m/s: 5.7

	Min	Max	Mean	Std	Varc%
hhN(dB)	-67.41	-64.00	-65.55	-75.58	9.9
vvN(dB)	-67.97	-64.36	-66.16	-76.17	10.0
hhL(dB)	-15.48	-8.82	-10.06	-19.95	10.2
vvL(dB)	-35.32	-15.64	-19.59	-21.58	63.3
ppN(m/s)	-12.46	12.61	0.02	4.17	
ppT(m/s)	-98.41	99.65	0.13	32.94	
hh/vv(dB)	-NaN	52.65	17.34	32.29	3124
vh/hh(dB)	-NaN	-29.81	-36.14	-36.01	102.
hv/vv(dB)	-NaN	-27.51	-50.83	-46.07	298.
hnjmp(dB)	-2.22	2.20	-0.08	-8.65	13.9
vnjmp(dB)	-2.35	2.39	-0.09	-8.62	14.0