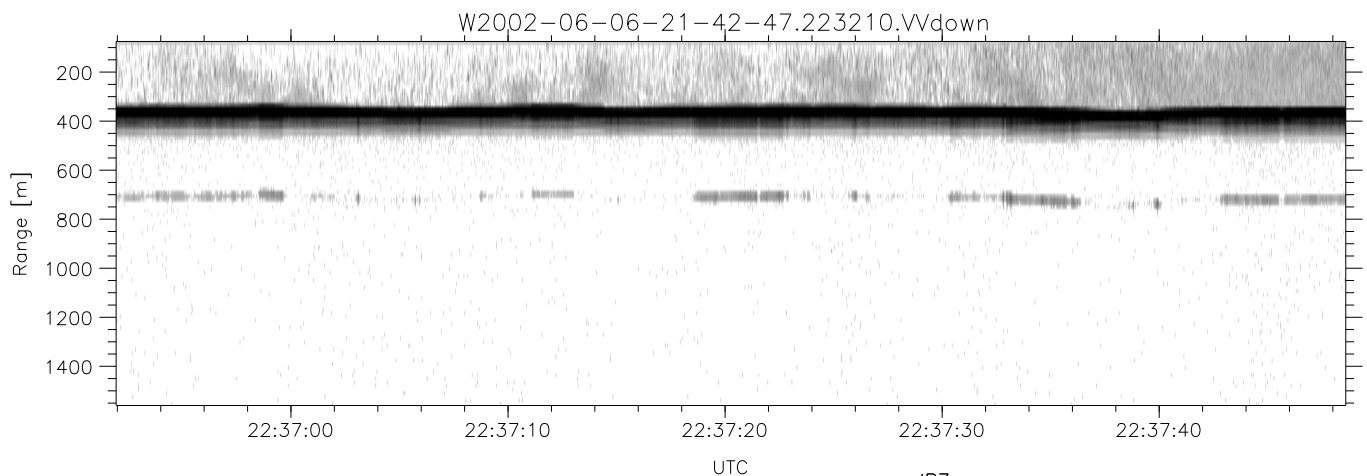
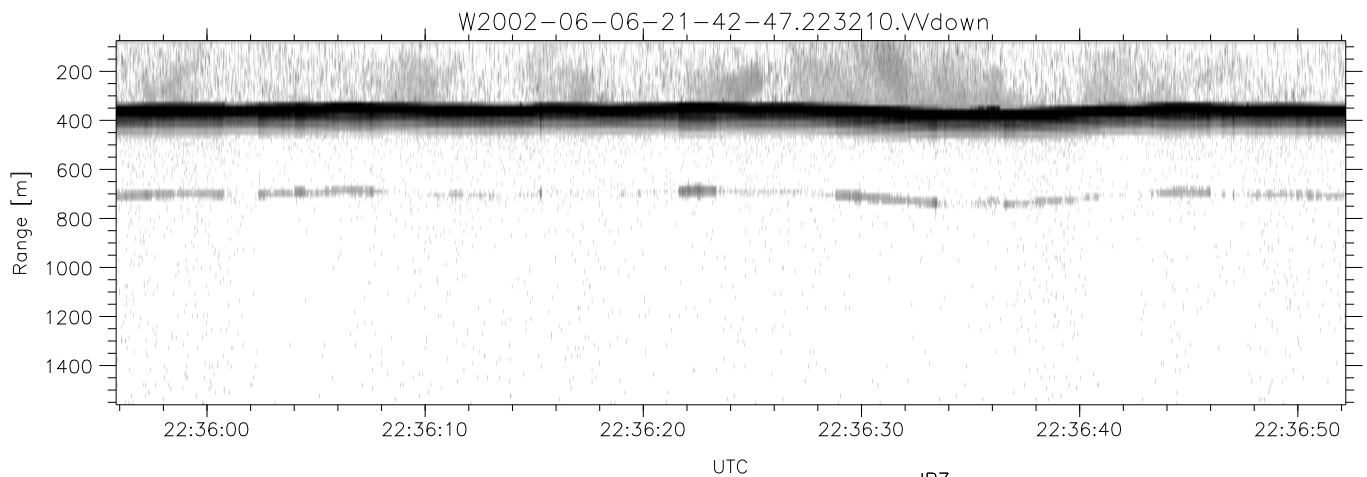
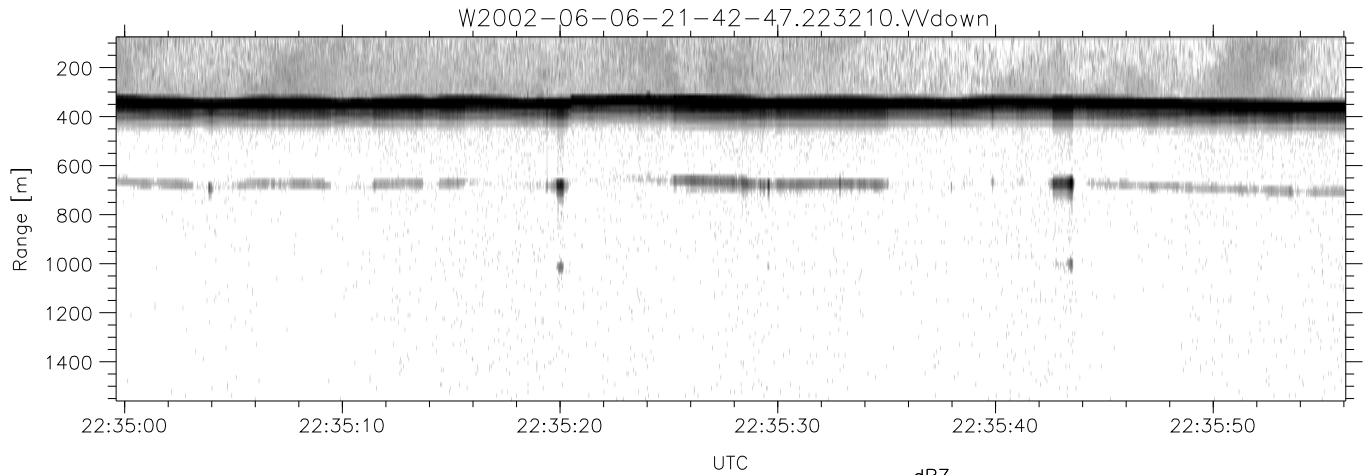


IHOP 2002 (dual-antenna config, modes 1,3,4,7) Data (cal: 49.0,50.0)

W2002-06-06-21-42-47 - PPMAG4
 IRIG:1,UTC: 21:42:46.79 to 22:52:21.79, Dur: 4175s
 TimeLngth: 4175.01s, TimeInt: 29ms (34.4pps)
 TimeCor=-13.0s, DSPDif(mn,min,mx):29,28,356
 PPS(min,max,std): 23,36,2.30
 Prof: 503 to 144291, NumProf(t/r): 143788/17069
 ProcTime/Recs: 22:32:10-22:40:29/102414-119482
 MxACQtime: 33ms; DRate: 192.8KB/s; Flags: 0, 0, 0
 Pulse: 275ns, IFfilt: 5.0MHz; ppPol: HH HV VV
 TxPol: HHVV, PRF: 20 10 20 10 kHz
 Range: Delay 75m, Spacing 15m, Gates 100
 Ave. Pulses: 84, Rng/Prof Aspect@90m/s: 5.7

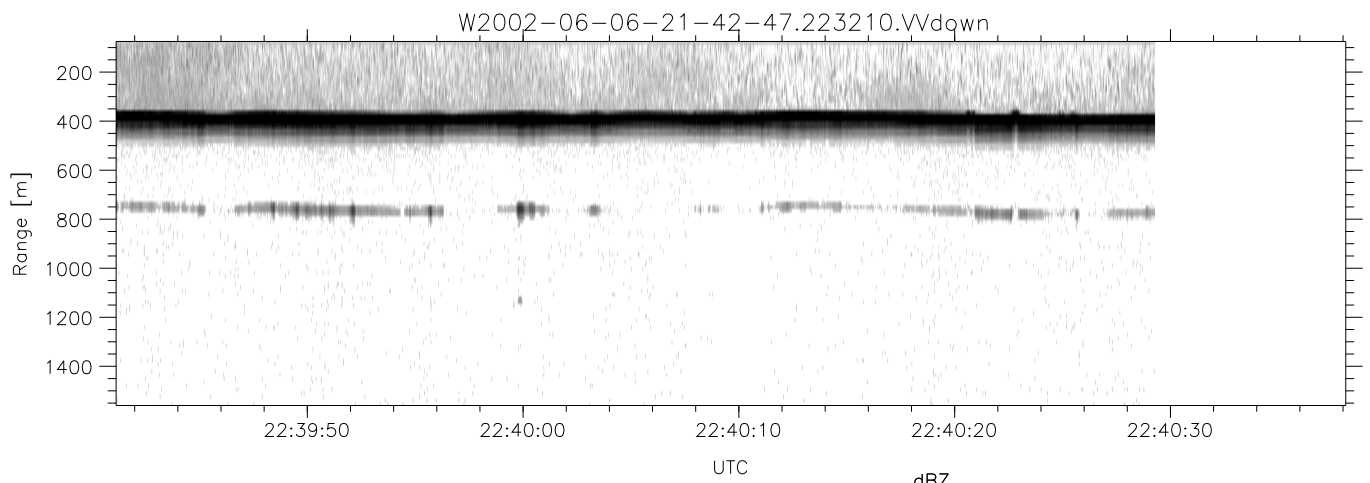
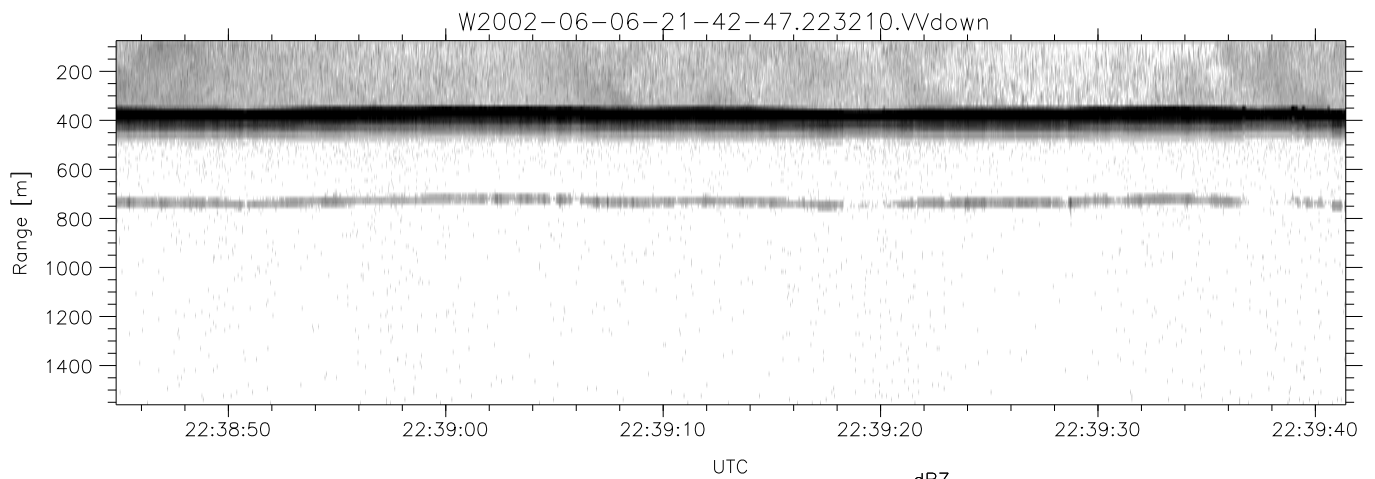
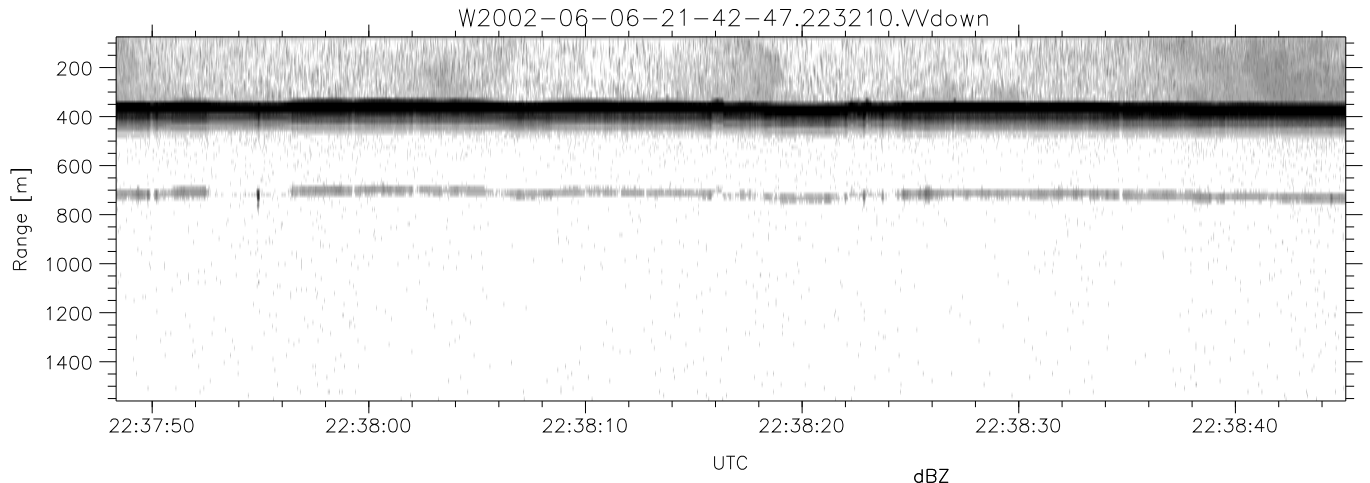
	Min	Max	Mean	Std	Varc%
hhN(dB)	-67.26	-64.03	-65.61	-75.71	9.8
vvN(dB)	-68.10	-64.74	-66.23	-76.20	10.1
hhL(dB)	-13.32	-9.09	-10.45	-19.80	11.6
vvL(dB)	-23.62	-15.59	-17.53	-24.01	22.5
ppN(m/s)	-12.24	12.87	0.04	4.15	
ppT(m/s)	-96.71	101.69	0.28	32.78	
hh/vv(dB)	-NaN	52.62	13.42	31.18	5975
vh/hh(dB)	-NaN	-29.86	-36.61	-36.52	102.
hv/vv(dB)	-NaN	-30.24	-49.84	-45.86	250.
hnjmp(dB)	-2.34	2.10	0.15	-8.51	13.6
vnjmp(dB)	-2.12	2.45	0.18	-8.28	14.3



IHOP 2002 (dual-antenna config, modes 1,3,4,7) Data (cal: 49.0,50.0)

W2002-06-06-21-42-47 - PPMAG4
 IRIG:1,UTC: 21:42:46.79 to 22:52:21.79, Dur: 4175s
 TimeLngth: 4175.01s, TimeInt: 29ms (34.4pps)
 TimeCor=-13.0s, DSPDif(mn,min,mx):29,28,356
 PPS(min,max,std): 23,36,2.30
 Prof: 503 to 144291, NumProf(t/r): 143788/17069
 ProcTime/Recs: 22:32:10-22:40:29/102414-119482
 MxACQtime: 33ms; DRate: 192.8KB/s; Flags: 0, 0, 0
 Pulse: 275ns, IFilt: 5.0MHz; ppPol: HH HV VV
 TxPol: HHVV, PRF: 20 10 20 10 kHz
 Range: Delay 75m, Spacing 15m, Gates 100
 Ave. Pulses: 84, Rng/Prof Aspect@90m/s: 5.7

	Min	Max	Mean	Std	Varc%
hhN(dB)	-67.26	-64.03	-65.61	-75.71	9.8
vvN(dB)	-68.10	-64.74	-66.23	-76.20	10.1
hhL(dB)	-13.32	-9.09	-10.45	-19.80	11.6
vvL(dB)	-23.62	-15.59	-17.53	-24.01	22.5
ppN(m/s)	-12.24	12.87	0.04	4.15	
ppT(m/s)	-96.71	101.69	0.28	32.78	
hh/vv(dB)	-NaN	52.62	13.42	31.18	5975
vh/hh(dB)	-NaN	-29.86	-36.61	-36.52	102.
hv/vv(dB)	-NaN	-30.24	-49.84	-45.86	250.
hh_jmp(dB)	-2.34	2.10	0.15	-8.51	13.6
vv_jmp(dB)	-2.12	2.45	0.18	-8.28	14.3



IHOP 2002 (dual-antenna config, modes 1,3,4,7) Data (cal: 49.0,50.0)

W2002-06-06-21-42-47 - PPMAG4
 IRIG:1,UTC: 21:42:46.79 to 22:52:21.79, Dur: 4175s
 TimeLngth: 4175.01s, TimeInt: 29ms (34.4pps)
 TimeCor=-13.0s, DSPDif(mn,min,mx):29,28,356
 PPS(min,max,std): 23,36,2.30
 Prof: 503 to 144291, NumProf(t/r): 143788/17069
 ProcTime/Recs: 22:32:10-22:40:29/102414-119482
 MxACQtime: 33ms; DRate: 192.8KB/s; Flags: 0, 0, 0
 Pulse: 275ns, IFilt: 5.0MHz; ppPol: HH HV VV
 TxPol: HHVV, PRF: 20 10 20 10 kHz
 Range: Delay 75m, Spacing 15m, Gates 100
 Ave. Pulses: 84, Rng/Prof Aspect@90m/s: 5.7

	Min	Max	Mean	Std	Varc%
hhN(dB)	-67.26	-64.03	-65.61	-75.71	9.8
vvN(dB)	-68.10	-64.74	-66.23	-76.20	10.1
hhL(dB)	-13.32	-9.09	-10.45	-19.80	11.6
vvL(dB)	-23.62	-15.59	-17.53	-24.01	22.5
ppN(m/s)	-12.24	12.87	0.04	4.15	
ppT(m/s)	-96.71	101.69	0.28	32.78	
hh/vv(dB)	-NaN	52.62	13.42	31.18	5975
vh/hh(dB)	-NaN	-29.86	-36.61	-36.52	102.
hv/vv(dB)	-NaN	-30.24	-49.84	-45.86	250.
hn_jmp(dB)	-2.34	2.10	0.15	-8.51	13.6
vn_jmp(dB)	-2.12	2.45	0.18	-8.28	14.3