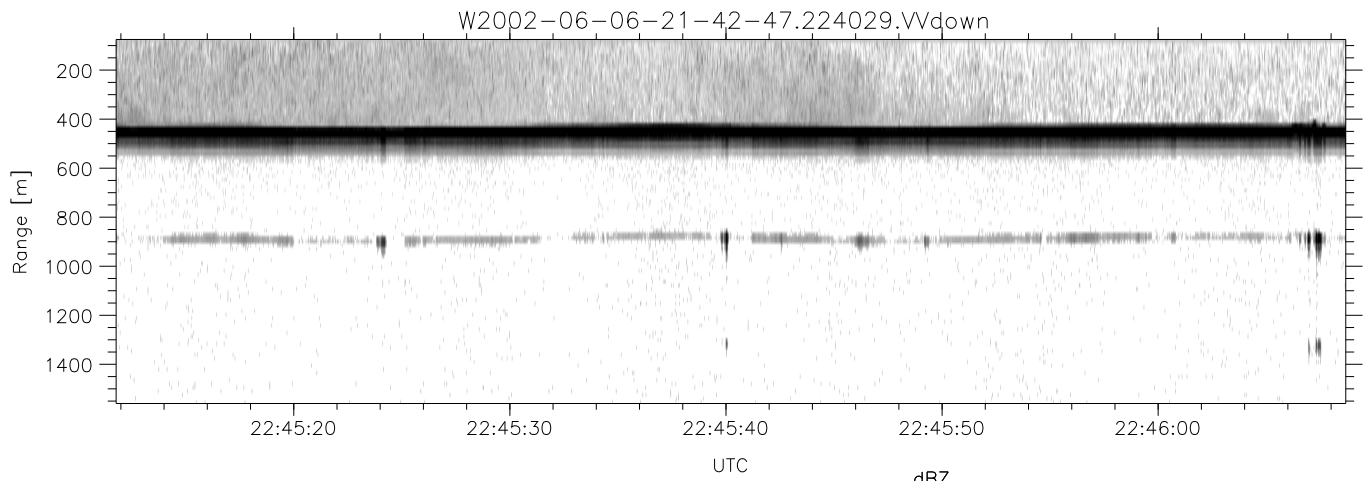
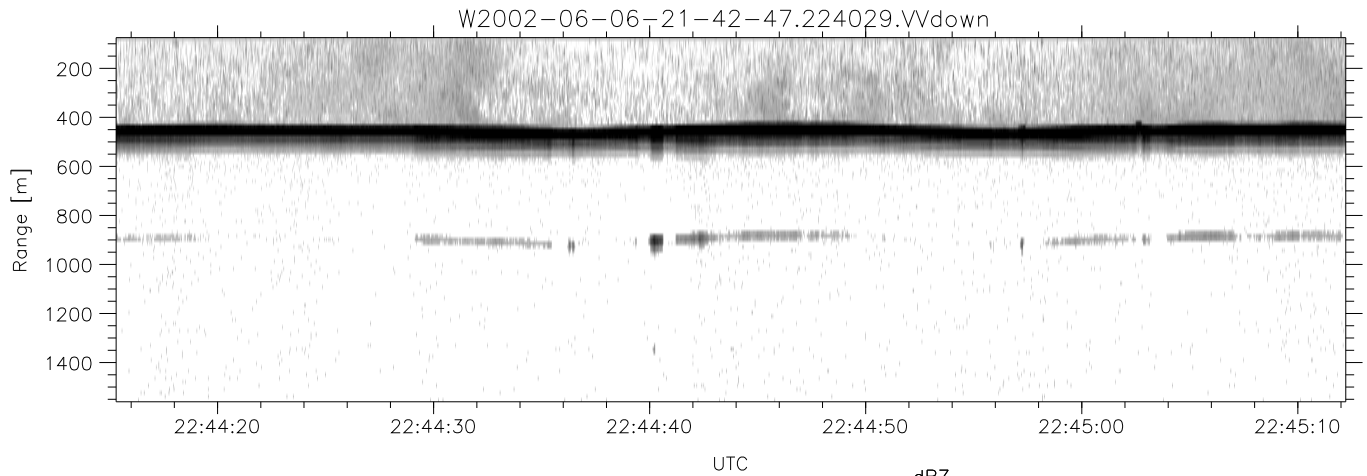
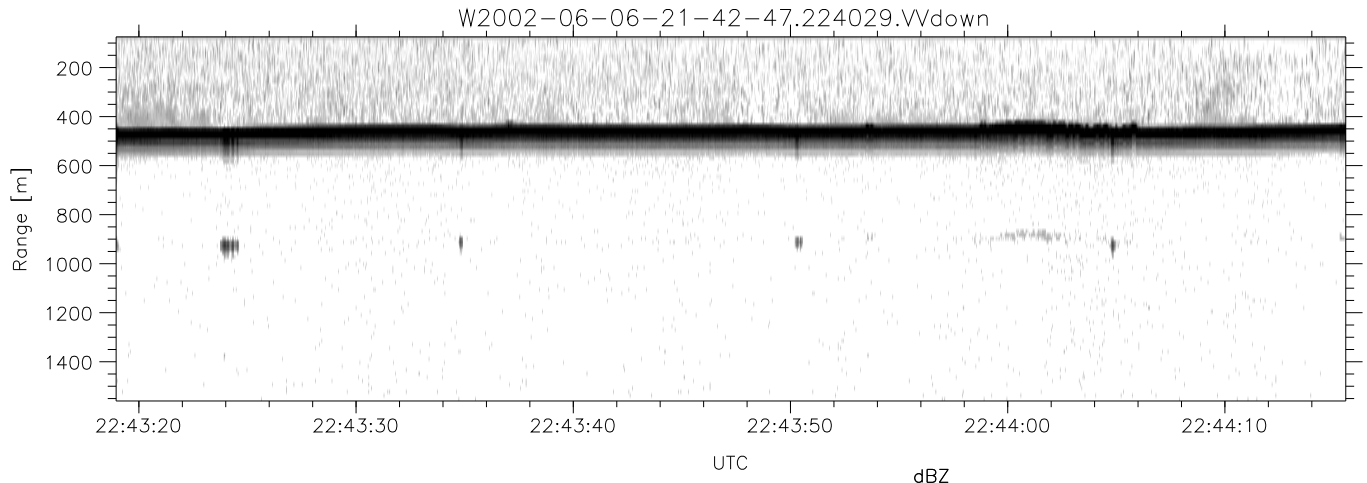


IHOP 2002 (dual-antenna config, modes 1,3,4,7) Data (cal: 49.0,50.0)

W2002-06-06-21-42-47 - PPMAG4
 IRIG:1,UTC: 21:42:46.79 to 22:52:21.79, Dur: 4175s
 TimeLngth: 4175.01s, TimeInt: 29ms (34.4pps)
 TimeCor=-13.0s, DSPDif(mn,min,mx):29,28,372
 PPS(min,max,std): 23,36,2.30
 Prof: 503 to 144291, NumProf(t/r): 143788/17069
 ProcTime/Recs: 22:40:29-22:48:49/119483-136551
 MxAcQtime: 33ms; DRate: 192.8KB/s; Flags: 0, 0, 0
 Pulse: 275ns, IFilt: 5.0MHz; ppPol: HH HV VV
 TxPol: HHVV, PRF: 20 10 20 10 kHz
 Range: Delay 75m, Spacing 15m, Gates 100
 Ave. Pulses: 84, Rng/Prof Aspect@90m/s: 5.7

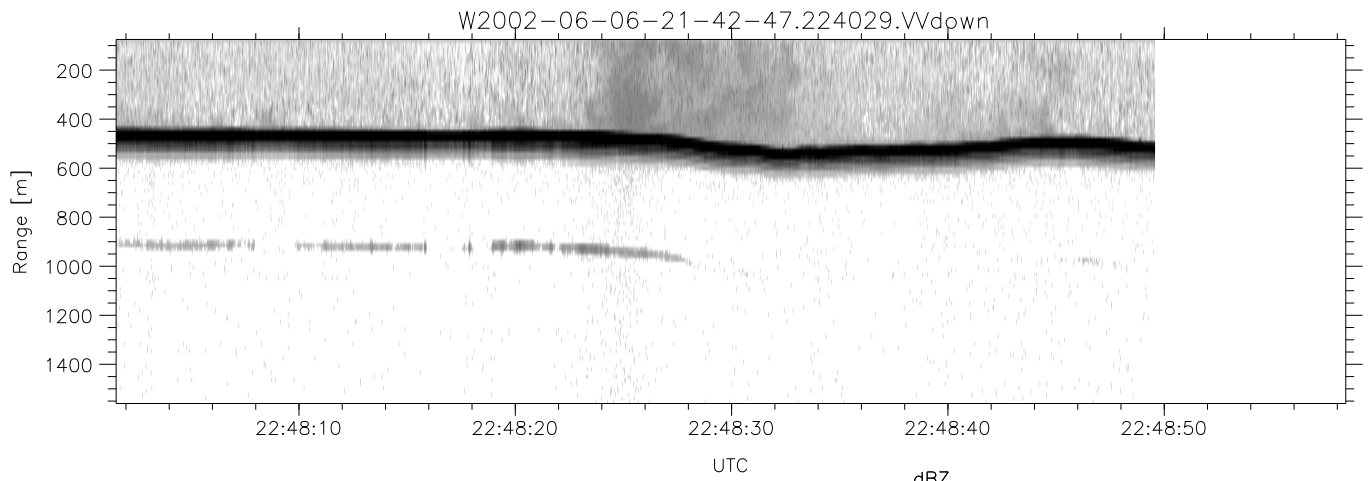
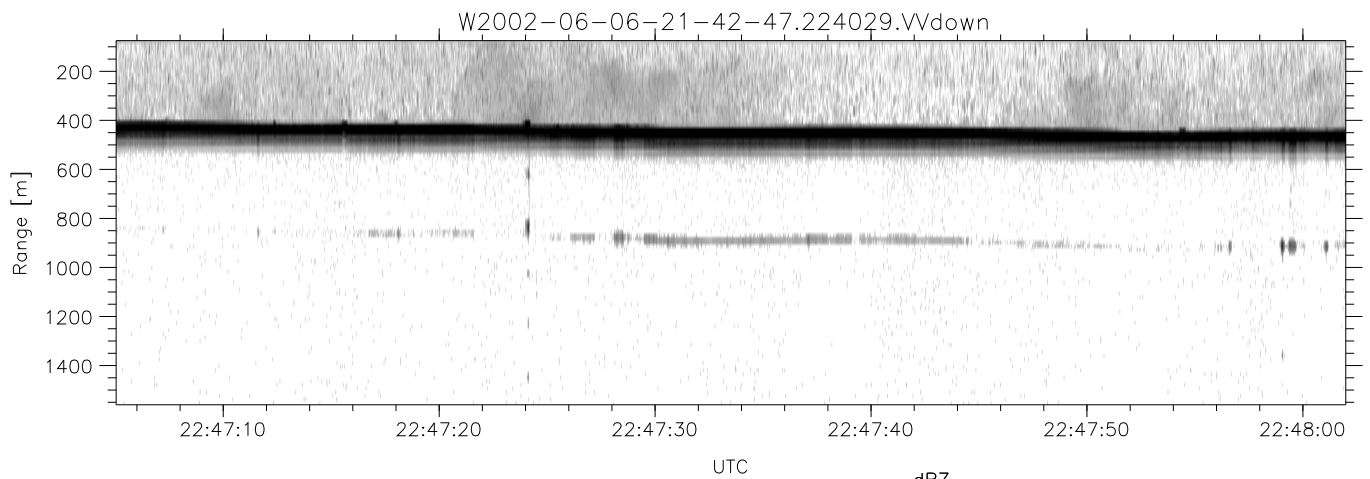
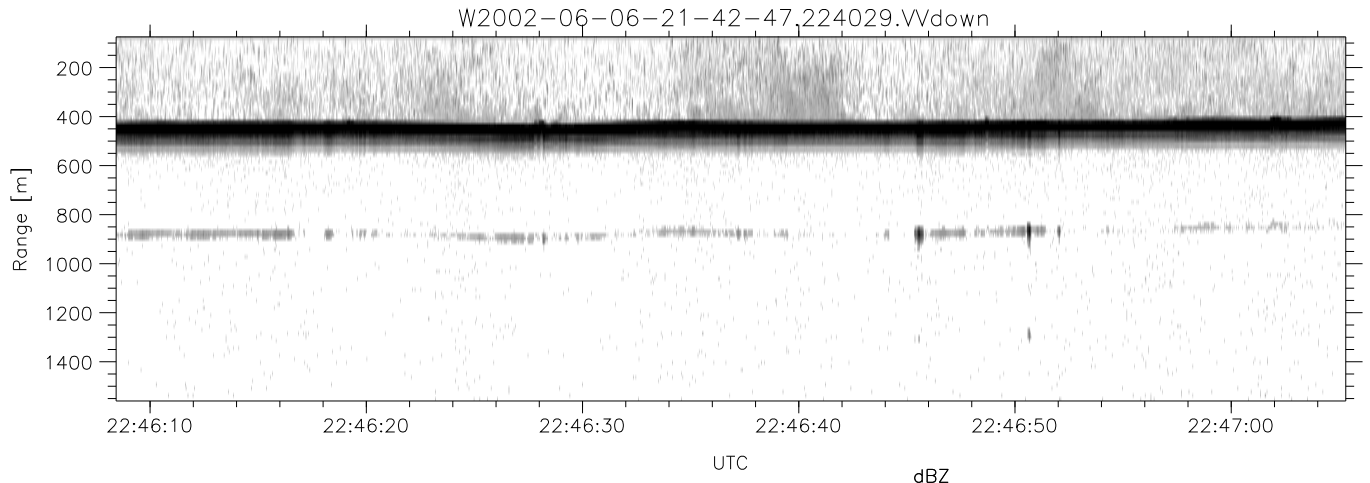
	Min	Max	Mean	Std	Varc%
hhN(dB)	-67.61	-64.25	-65.85	-75.93	9.8
vvN(dB)	-67.93	-64.66	-66.27	-76.27	10.0
hhL(dB)	-15.10	-10.17	-11.65	-21.09	11.4
vvL(dB)	-23.05	-15.24	-17.03	-23.89	20.6
ppN(m/s)	-12.26	12.53	-0.13	4.12	
ppT(m/s)	-96.86	99.02	-1.00	32.58	
hh/vv(dB)	-NaN	43.99	13.62	25.95	1708
vh/hh(dB)	-NaN	-29.54	-36.29	-36.30	99.8
hv/vv(dB)	-NaN	-31.76	-52.37	-46.83	358.
hnjmp(dB)	-2.11	2.05	-0.08	-8.68	13.8
vnjmp(dB)	-2.37	2.22	-0.08	-8.57	14.2



IHOP 2002 (dual-antenna config, modes 1,3,4,7) Data (cal: 49.0,50.0)

W2002-06-06-21-42-47 - PPMAG4
 IRIG:1,UTC: 21:42:46.79 to 22:52:21.79, Dur: 4175s
 TimeLngth: 4175.01s, TimeInt: 29ms (34.4pps)
 TimeCor=-13.0s, DSPDif(mn,min,mx):29,28,372
 PPS(min,max,std): 23,36,2.30
 Prof: 503 to 144291, NumProf(t/r): 143788/17069
 ProcTime/Recs: 22:40:29-22:48:49/119483-136551
 MxACQtime: 33ms; DRate: 192.8KB/s; Flags: 0, 0, 0
 Pulse: 275ns, IFilt: 5.0MHz; ppPol: HH HV VV
 TxPol: HHVV, PRF: 20 10 20 10 kHz
 Range: Delay 75m, Spacing 15m, Gates 100
 Ave. Pulses: 84, Rng/Prof Aspect@90m/s: 5.7

	Min	Max	Mean	Std	Varc%
hhN(dB)	-67.61	-64.25	-65.85	-75.93	9.8
vvN(dB)	-67.93	-64.66	-66.27	-76.27	10.0
hhL(dB)	-15.10	-10.17	-11.65	-21.09	11.4
vvL(dB)	-23.05	-15.24	-17.03	-23.89	20.6
ppN(m/s)	-12.26	12.53	-0.13	4.12	
ppT(m/s)	-96.86	99.02	-1.00	32.58	
hh/vv(dB)	-NaN	43.99	13.62	25.95	1708
vh/hh(dB)	-NaN	-29.54	-36.29	-36.30	99.8
hv/vv(dB)	-NaN	-31.76	-52.37	-46.83	358.
hnjmp(dB)	-2.11	2.05	-0.08	-8.68	13.8
vnjmp(dB)	-2.37	2.22	-0.08	-8.57	14.2



IHOP 2002 (dual-antenna config, modes 1,3,4,7) Data (cal: 49.0,50.0)

W2002-06-06-21-42-47 - PPMAG4
 IRIG:1,UTC: 21:42:46.79 to 22:52:21.79, Dur: 4175s
 TimeLngth: 4175.01s, TimeInt: 29ms (34.4pps)
 TimeCor=-13.0s, DSPDif(mn,min,mx):29,28,372
 PPS(min,max,std): 23,36,2.30
 Prof: 503 to 144291, NumProf(t/r): 143788/17069
 ProcTime/Recs: 22:40:29-22:48:49/119483-136551
 MxACQtime: 33ms; DRate: 192.8KB/s; Flags: 0, 0, 0
 Pulse: 275ns, IFilt: 5.0MHz; ppPol: HH HV VV
 TxPol: HHVV, PRF: 20 10 20 10 kHz
 Range: Delay 75m, Spacing 15m, Gates 100
 Ave. Pulses: 84, Rng/Prof Aspect@90m/s: 5.7

	Min	Max	Mean	Std	Varc%
hhN (dB)	-67.61	-64.25	-65.85	-75.93	9.8
vvN (dB)	-67.93	-64.66	-66.27	-76.27	10.0
hhL (dB)	-15.10	-10.17	-11.65	-21.09	11.4
vvL (dB)	-23.05	-15.24	-17.03	-23.89	20.6
ppN (m/s)	-12.26	12.53	-0.13	4.12	
ppT (m/s)	-96.86	99.02	-1.00	32.58	
hh/vv (dB)	-NaN	43.99	13.62	25.95	1708
vh/hh (dB)	-NaN	-29.54	-36.29	-36.30	99.8
hv/vv (dB)	-NaN	-31.76	-52.37	-46.83	358.
hnjmp (dB)	-2.11	2.05	-0.08	-8.68	13.8
vnjmp (dB)	-2.37	2.22	-0.08	-8.57	14.2