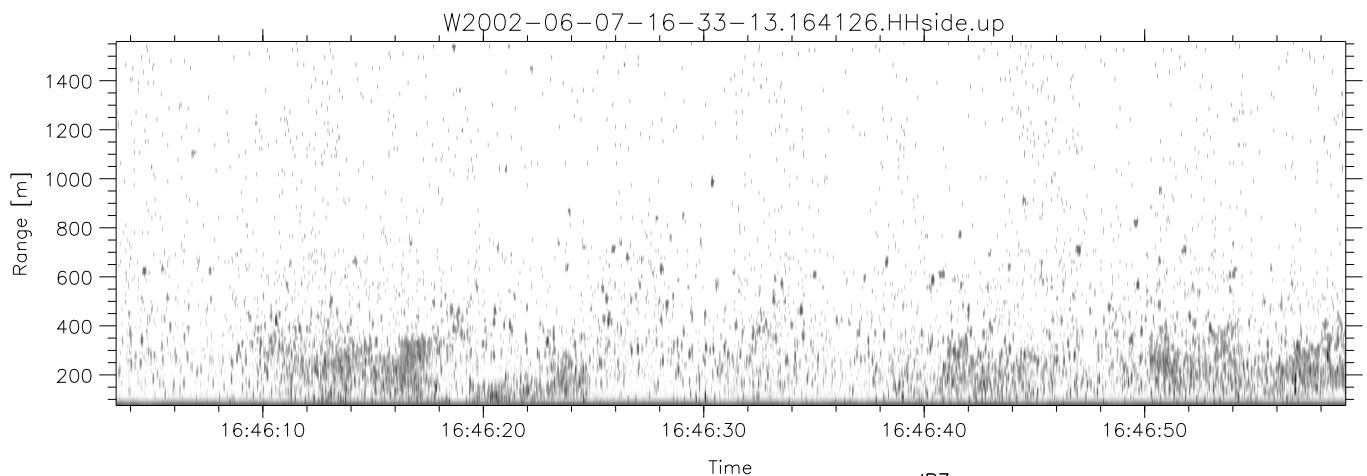
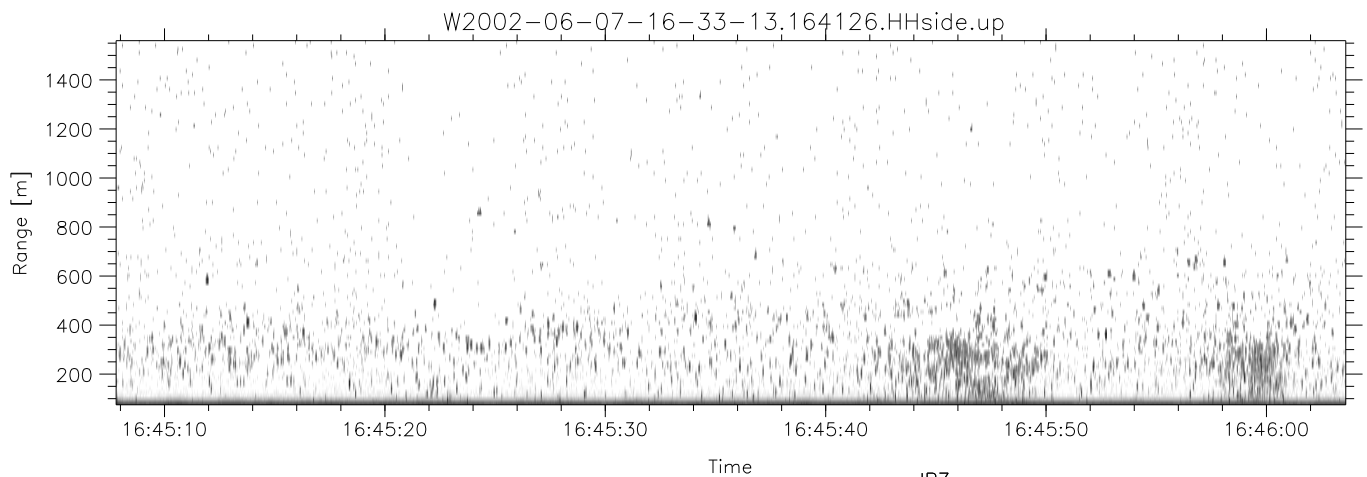
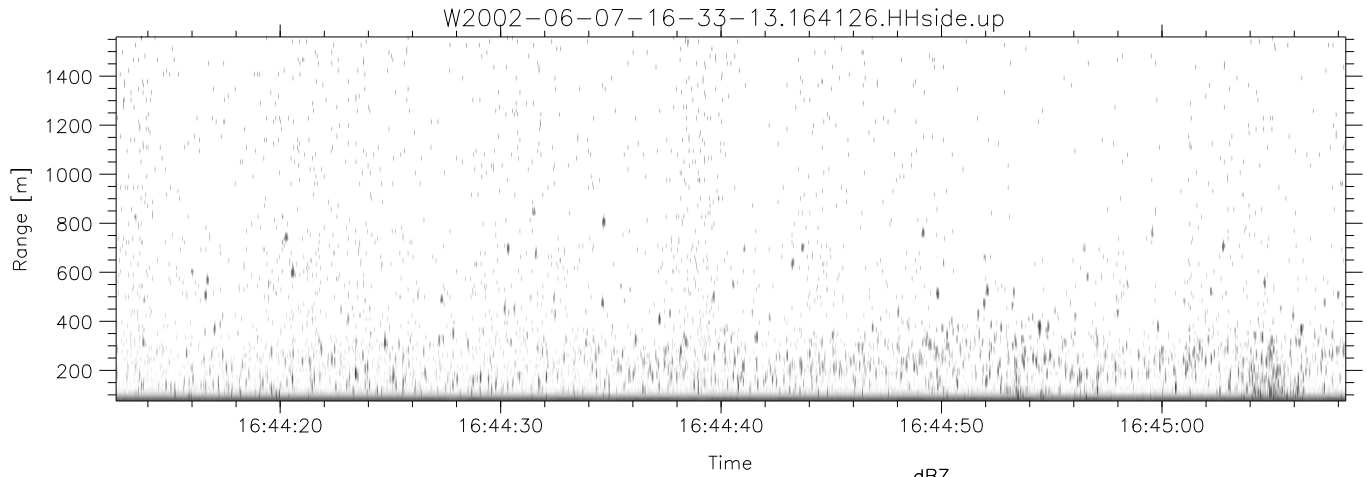


IHOP 2002 (dual-antenna config, modes 1,3,4,7) Data (cal: 49.0,50.0)

W2002-06-07-16-33-13 - PPMAG4
 IRIG:0,Time: 16:33:12.64 to 18:41:58.06, Dur: 7726s
 TimeLngth: 7725.42s, TimeInt: 29ms (34.4pps)
 TimeCor=0.0s, DSPDif(mn,min,mx):28,28,312
 PPS(min,max,std): 25,36,2.14
 Prof: 536 to 266091, NumProf(t/r): 265555/17069
 ProcTime/Recs: 16:41:26-16:49:38/17069-34137
 MxACQtime: 33ms; DRate: 192.4KB/s; Flags: 0, 0, 0
 Pulse: 275ns, IFfilt: 5.0MHz; ppPol: HH HV VV
 TxPol: HHVV, PRF: 20 10 20 10 kHz
 Range: Delay 75m, Spacing 15m, Gates 100
 Ave. Pulses: 84, Rng/Prof Aspect@90m/s: 5.7

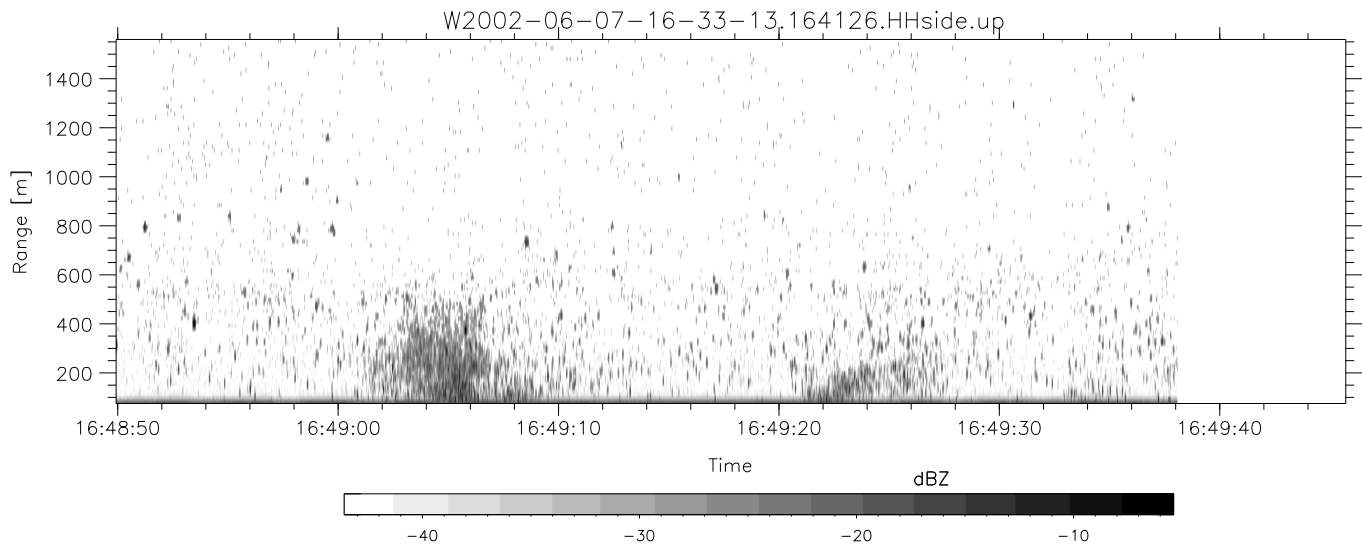
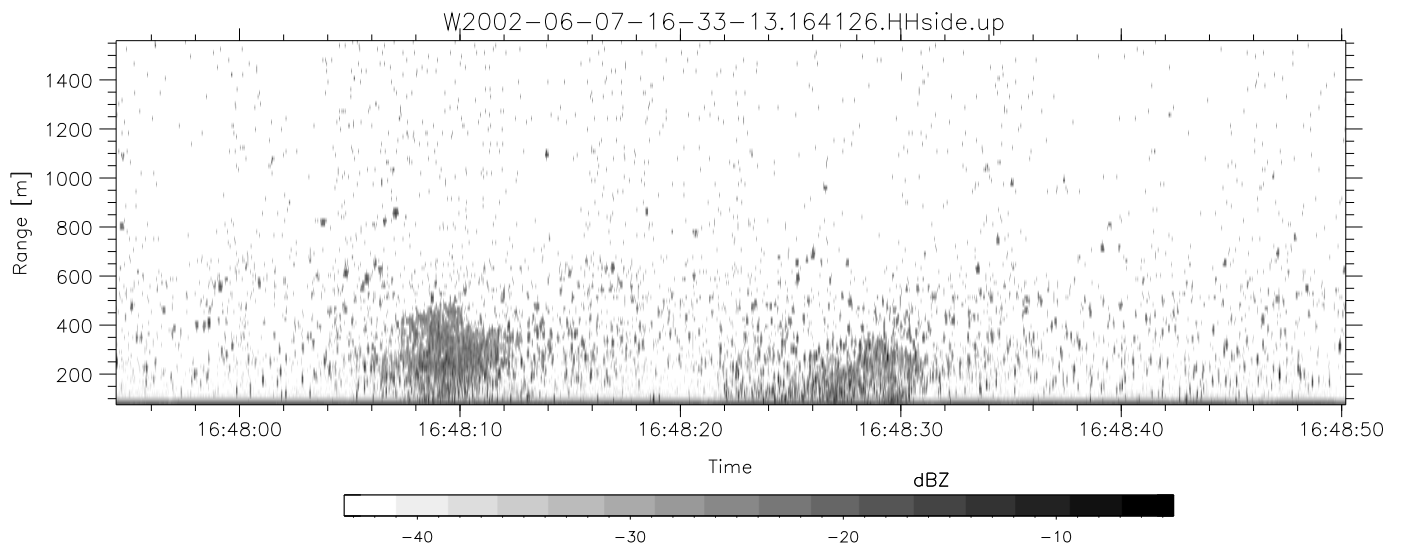
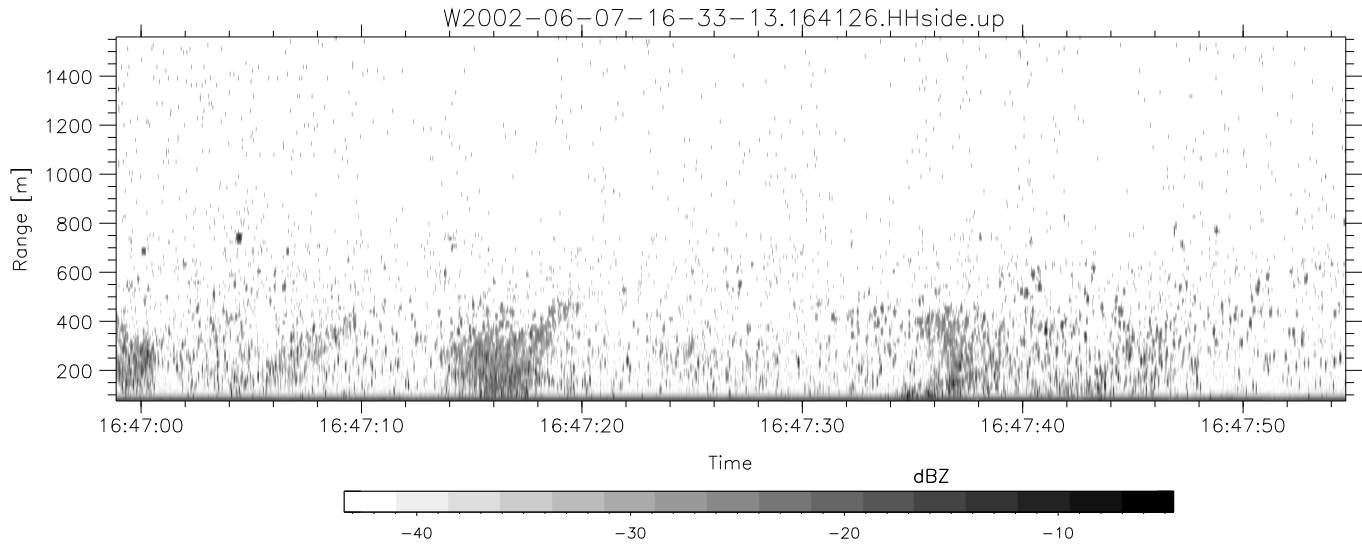
	Min	Max	Mean	Std	Varc%
hhN(dB)	-67.25	-61.39	-65.44	-75.43	10.0
vvN(dB)	-67.73	-61.24	-65.82	-75.57	10.6
hhL(dB)	-15.18	-5.97	-8.68	-15.69	19.9
vvL(dB)	-28.26	-8.25	-13.61	-14.38	83.7
ppN(m/s)	-12.55	12.52	-0.02	4.08	
ppT(m/s)	-99.18	98.89	-0.17	32.21	
hh/vv(dB)	-NaN	52.05	17.93	34.24	4274
vh/hh(dB)	-NaN	-11.67	-21.56	-17.92	231.
hv/vv(dB)	-NaN	-15.32	-35.38	-29.62	376.
hnjmp(dB)	-3.33	2.77	0.14	-8.45	13.8
vnjmp(dB)	-2.89	2.54	0.15	-8.39	14.0



IHOP 2002 (dual-antenna config, modes 1,3,4,7) Data (cal: 49.0,50.0)

W2002-06-07-16-33-13 - PPMAG4
 IRIG:0,Time: 16:33:12.64 to 18:41:58.06, Dur: 7726s
 TimeLngth: 7725.42s, TimeInt: 29ms (34.4pps)
 TimeCor=0.0s, DSPDif(mn,min,mx):28,28,312
 PPS(min,max,std): 25,36,2.14
 Prof: 536 to 266091, NumProf(t/r): 265555/17069
 ProcTime/Recs: 16:41:26-16:49:38/17069-34137
 MxACQtime: 33ms; DRate: 192.4KB/s; Flags: 0, 0, 0
 Pulse: 275ns, IFilt: 5.0MHz; ppPol: HH HV VV
 TxPol: HHVV, PRF: 20 10 20 10 kHz
 Range: Delay 75m, Spacing 15m, Gates 100
 Ave. Pulses: 84, Rng/Prof Aspect@90m/s: 5.7

	Min	Max	Mean	Std	Varc%
hhN(dB)	-67.25	-61.39	-65.44	-75.43	10.0
vvN(dB)	-67.73	-61.24	-65.82	-75.57	10.6
hhL(dB)	-15.18	-5.97	-8.68	-15.69	19.9
vvL(dB)	-28.26	-8.25	-13.61	-14.38	83.7
ppN(m/s)	-12.55	12.52	-0.02	4.08	
ppT(m/s)	-99.18	98.89	-0.17	32.21	
hh/vv(dB)	-NaN	52.05	17.93	34.24	4274
vh/hh(dB)	-NaN	-11.67	-21.56	-17.92	231.
hv/vv(dB)	-NaN	-15.32	-35.38	-29.62	376.
hnjmp(dB)	-3.33	2.77	0.14	-8.45	13.8
vnjmp(dB)	-2.89	2.54	0.15	-8.39	14.0



IHOP 2002 (dual-antenna config, modes 1,3,4,7) Data (cal: 49.0,50.0)

W2002-06-07-16-33-13 - PPMAG4
 IRIG:0,Time: 16:33:12.64 to 18:41:58.06, Dur: 7726s
 TimeLngth: 7725.42s, TimeInt: 29ms (34.4pps)
 TimeCor=0.0s, DSPDif(mn,min,mx):28,28,312
 PPS(min,max,std): 25,36,2.14
 Prof: 536 to 266091, NumProf(t/r): 265555/17069
 ProcTime/Recs: 16:41:26-16:49:38/17069-34137
 MxACQtime: 33ms; DRate: 192.4KB/s; Flags: 0, 0, 0
 Pulse: 275ns, IFfilt: 5.0MHz; ppPol: HH HV VV
 TxPol: HHVV, PRF: 20 10 20 10 kHz
 Range: Delay 75m, Spacing 15m, Gates 100
 Ave. Pulses: 84, Rng/Prof Aspect@90m/s: 5.7

	Min	Max	Mean	Std	Varc%
hhN(dB)	-67.25	-61.39	-65.44	-75.43	10.0
vvN(dB)	-67.73	-61.24	-65.82	-75.57	10.6
hhL(dB)	-15.18	-5.97	-8.68	-15.69	19.9
vvL(dB)	-28.26	-8.25	-13.61	-14.38	83.7
ppN(m/s)	-12.55	12.52	-0.02	4.08	
ppT(m/s)	-99.18	98.89	-0.17	32.21	
hh/vv(dB)	-NaN	52.05	17.93	34.24	4274
vh/hh(dB)	-NaN	-11.67	-21.56	-17.92	231.
hv/vv(dB)	-NaN	-15.32	-35.38	-29.62	376.
hnjmp(dB)	-3.33	2.77	0.14	-8.45	13.8
vnjmp(dB)	-2.89	2.54	0.15	-8.39	14.0