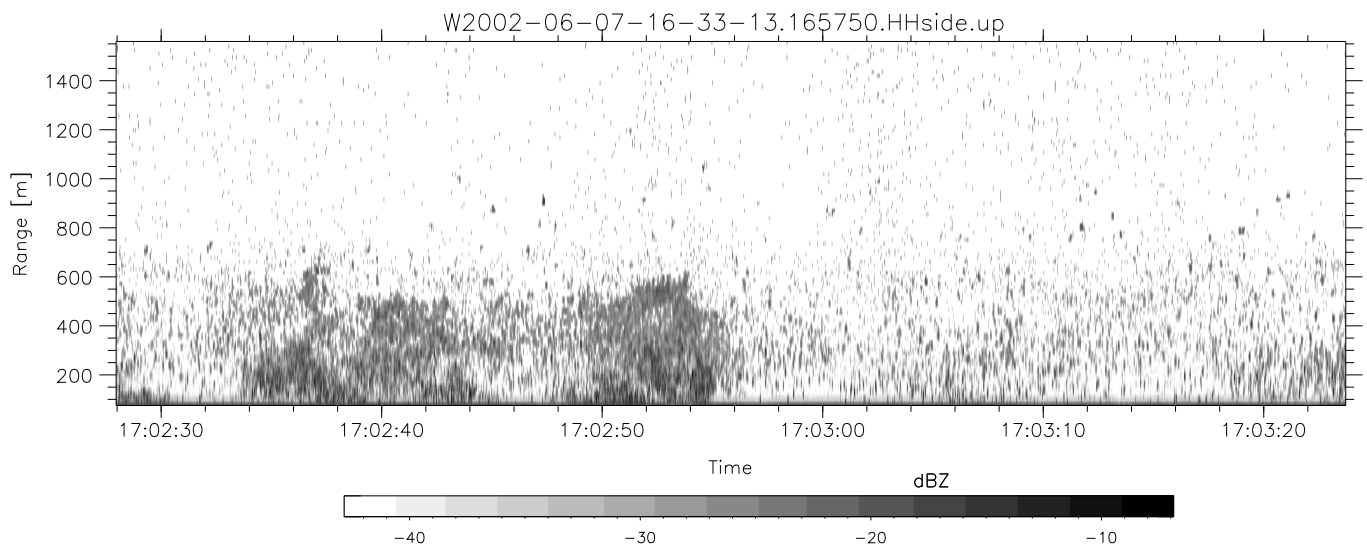
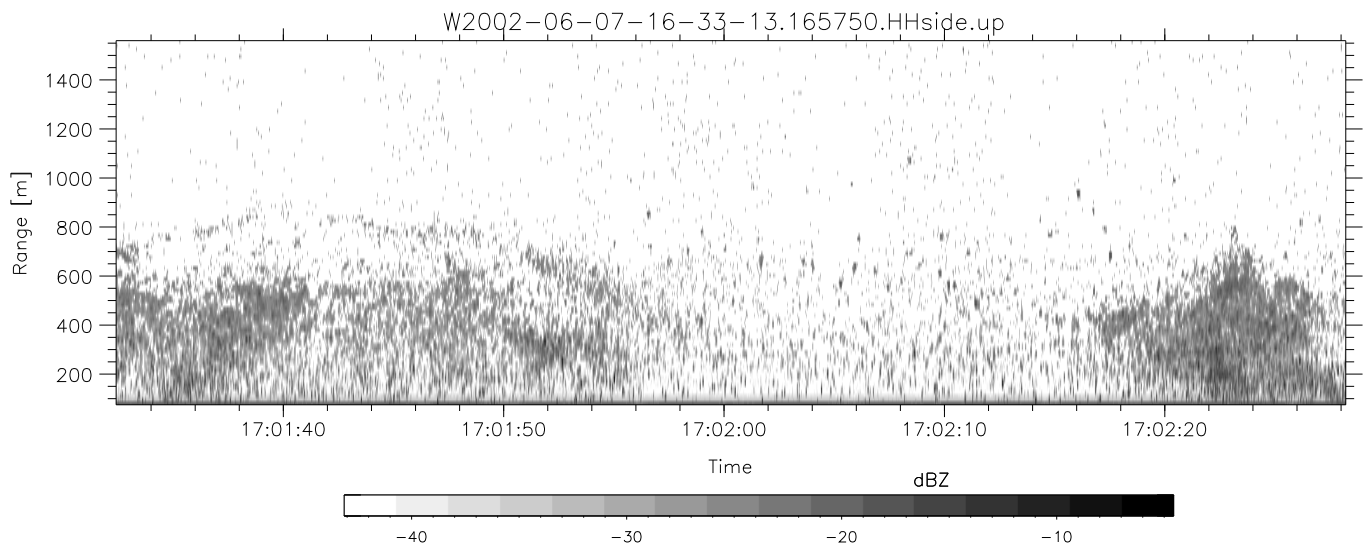
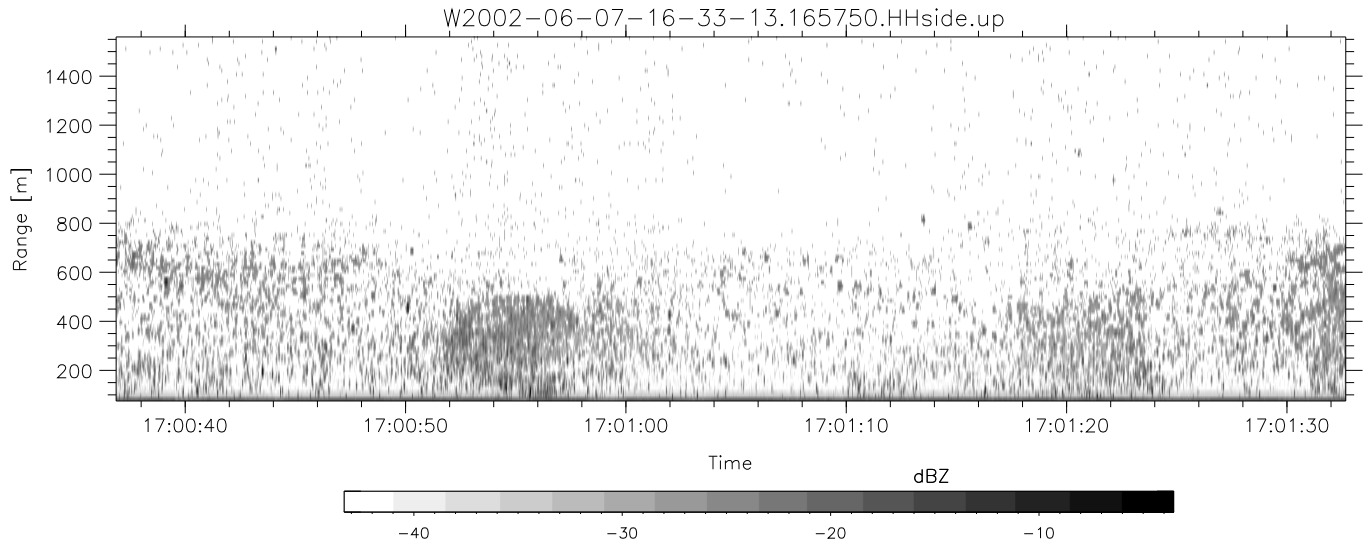


IHOP 2002 (dual-antenna config, modes 1,3,4,7) Data (cal: 49.0,50.0)

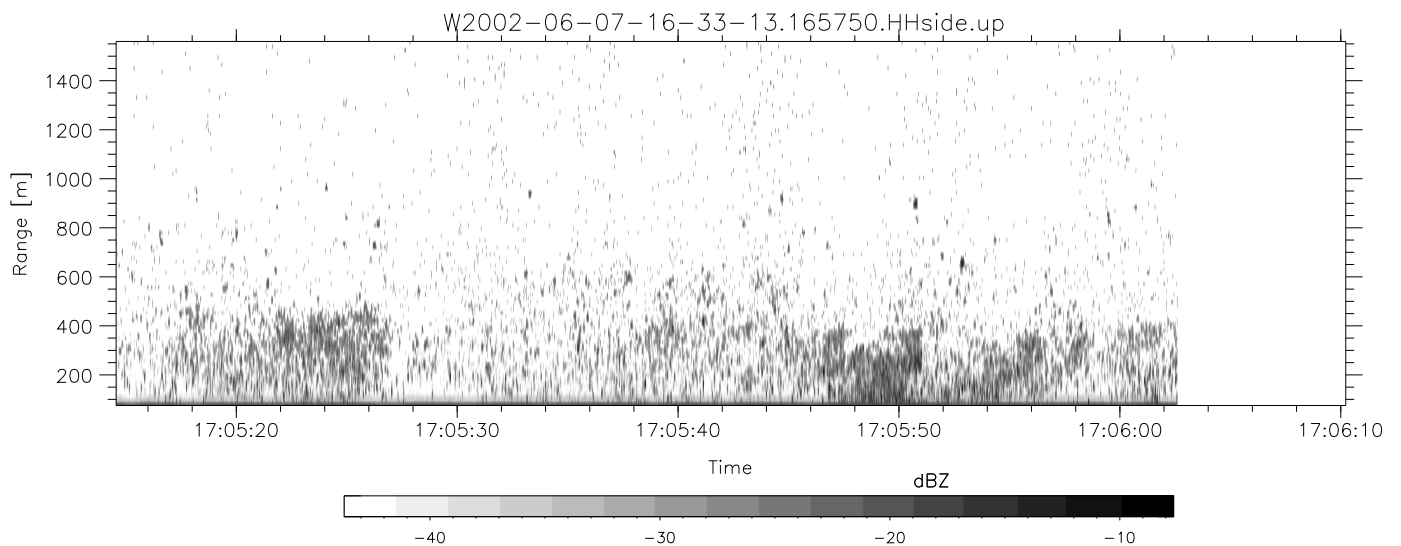
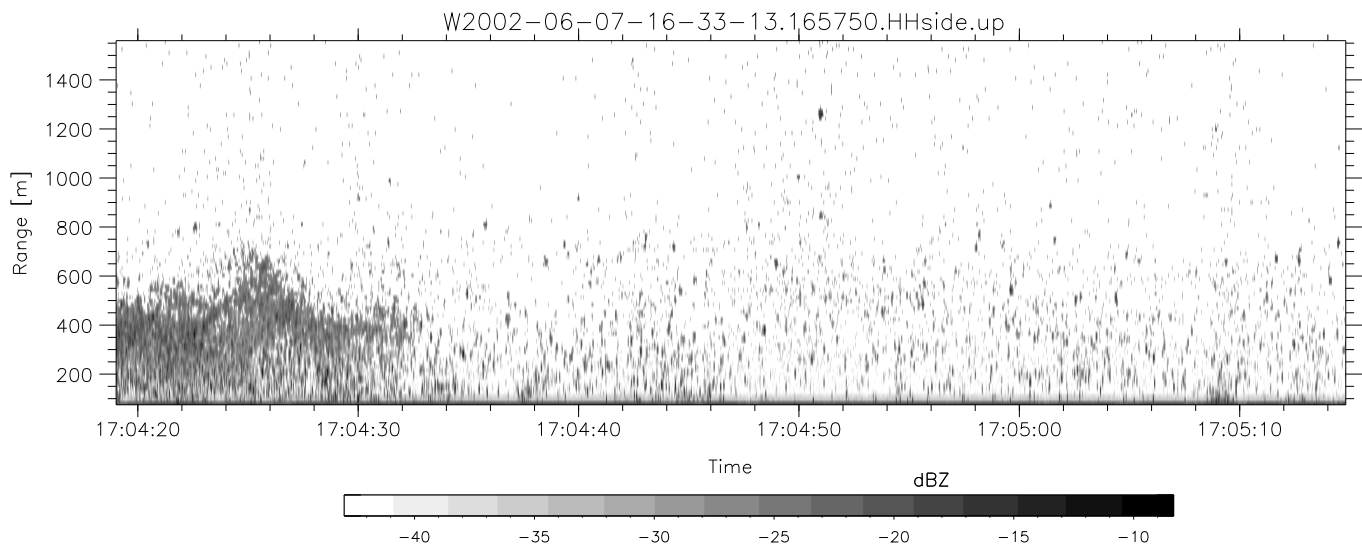
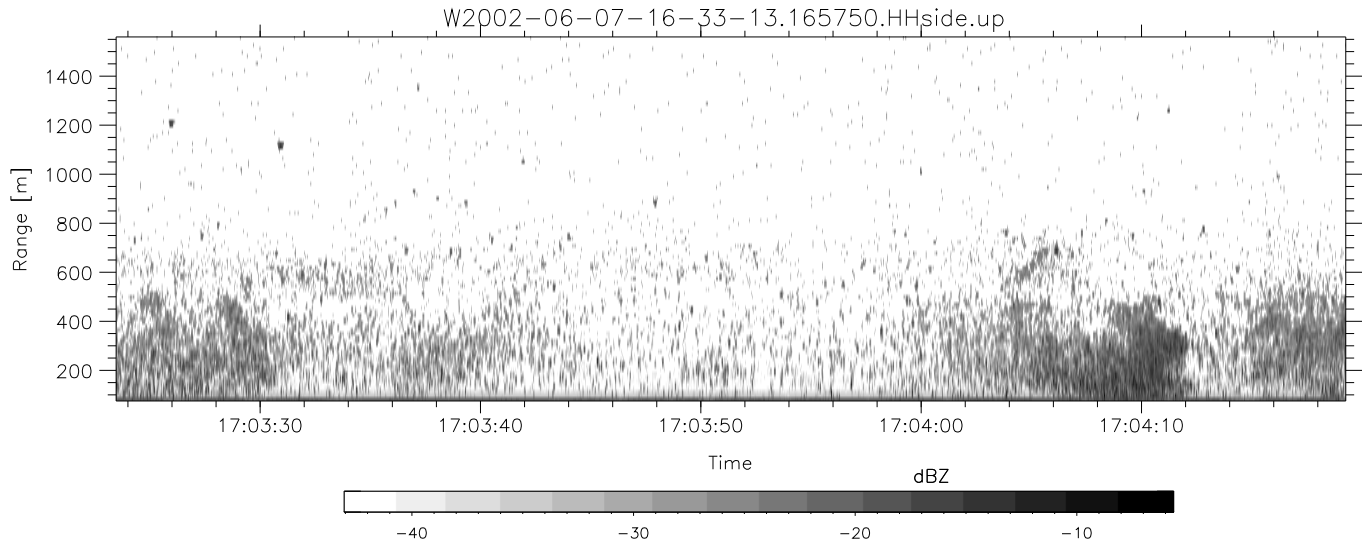
W2002-06-07-16-33-13 - PPMAG4	Min	Max	Mean	Std	Varc%	
IRIG:0,Time: 16:33:12.64 to 18:41:58.06, Dur: 7726s	hhN (dB)	-67.42	-64.14	-65.64	-75.74	9.8
TimeLngth: 7725.42s, TimeInt: 29ms (34.4pps)	vvN (dB)	-67.75	-64.22	-65.96	-76.02	9.9
TimeCor=0.0s, DSPDif(mn,min,mx):28,28,316	hhL (dB)	-15.48	-8.19	-10.88	-17.91	19.8
PPS(min,max,std): 25,36,2.17	vvL (dB)	-25.15	-13.48	-16.99	-24.04	19.7
Prof: 536 to 266091, NumProf(t/r): 265555/17069	ppN (m/s)	-12.27	12.18	-0.03	4.14	
ProcTime/Recs: 16:57:50-17:06:02/51207-68275	ppT (m/s)	-96.95	96.26	-0.21	32.69	
MxAcQtime: 33ms; DRate: 192.4KB/s; Flags: 0, 0, 0	hh/vv (dB)	-NaN	57.52	15.39	39.58	2626
Pulse: 275ns, IFilt: 5.0MHz; ppPol: HH HV VV	vh/hh (dB)	-NaN	-20.20	-27.40	-26.75	116.
TxPol: HHVV, PRF: 20 10 20 10 kHz	hv/vv (dB)	-NaN	-18.51	-34.07	-31.68	173.
Range: Delay 75m, Spacing 15m, Gates 100	hn_jmp (dB)	-2.20	2.35	0.15	-8.45	13.8
Ave. Pulses: 84, Rng/Prof Aspect@90m/s: 5.7	vn_jmp (dB)	-1.80	2.30	0.16	-8.40	13.9



IHOP 2002 (dual-antenna config, modes 1,3,4,7) Data (cal: 49.0,50.0)

W2002-06-07-16-33-13 - PPMAG4
 IRIG:0,Time: 16:33:12.64 to 18:41:58.06, Dur: 7726s
 TimeLngth: 7725.42s, TimeInt: 29ms (34.4pps)
 TimeCor=0.0s, DSPDif(mn,min,mx):28,28,316
 PPS(min,max,std): 25,36,2.17
 Prof: 536 to 266091, NumProf(t/r): 265555/17069
 ProcTime/Recs: 16:57:50-17:06:02/51207-68275
 MxACQtime: 33ms; DRate: 192.4KB/s; Flags: 0, 0, 0
 Pulse: 275ns, IFfilt: 5.0MHz; ppPol: HH HV VV
 TxPol: HHVV, PRF: 20 10 20 10 kHz
 Range: Delay 75m, Spacing 15m, Gates 100
 Ave. Pulses: 84, Rng/Prof Aspect@90m/s: 5.7

	Min	Max	Mean	Std	Varc%
hhN (dB)	-67.42	-64.14	-65.64	-75.74	9.8
vvN (dB)	-67.75	-64.22	-65.96	-76.02	9.9
hhL (dB)	-15.48	-8.19	-10.88	-17.91	19.8
vvL (dB)	-25.15	-13.48	-16.99	-24.04	19.7
ppN (m/s)	-12.27	12.18	-0.03	4.14	
ppT (m/s)	-96.95	96.26	-0.21	32.69	
hh/vv (dB)	-NaN	57.52	15.39	39.58	2626
vh/hh (dB)	-NaN	-20.20	-27.40	-26.75	116.
hv/vv (dB)	-NaN	-18.51	-34.07	-31.68	173.
hnjmp (dB)	-2.20	2.35	0.15	-8.45	13.8
vnjmp (dB)	-1.80	2.30	0.16	-8.40	13.9



IHOP 2002 (dual-antenna config, modes 1,3,4,7) Data (cal: 49.0,50.0)

W2002-06-07-16-33-13 - PPMAG4
 IRIG:0,Time: 16:33:12.64 to 18:41:58.06, Dur: 7726s
 TimeLngth: 7725.42s, TimeInt: 29ms (34.4pps)
 TimeCor=0.0s, DSPDif(mn,min,mx):28,28,316
 PPS(min,max,std): 25,36,2.17
 Prof: 536 to 266091, NumProf(t/r): 265555/17069
 ProcTime/Recs: 16:57:50-17:06:02/51207-68275
 MxACQtime: 33ms; DRate: 192.4KB/s; Flags: 0, 0, 0
 Pulse: 275ns, IFfilt: 5.0MHz; ppPol: HH HV VV
 TxPol: HHVV, PRF: 20 10 20 10 kHz
 Range: Delay 75m, Spacing 15m, Gates 100
 Ave. Pulses: 84, Rng/Prof Aspect@90m/s: 5.7

	Min	Max	Mean	Std	Varc%
hhN(dB)	-67.42	-64.14	-65.64	-75.74	9.8
vvN(dB)	-67.75	-64.22	-65.96	-76.02	9.9
hhL(dB)	-15.48	-8.19	-10.88	-17.91	19.8
vvL(dB)	-25.15	-13.48	-16.99	-24.04	19.7
ppN(m/s)	-12.27	12.18	-0.03	4.14	
ppT(m/s)	-96.95	96.26	-0.21	32.69	
hh/vv(dB)	-NaN	57.52	15.39	39.58	2626
vh/hh(dB)	-NaN	-20.20	-27.40	-26.75	116.
hv/vv(dB)	-NaN	-18.51	-34.07	-31.68	173.
hnjmp(dB)	-2.20	2.35	0.15	-8.45	13.8
vnjmp(dB)	-1.80	2.30	0.16	-8.40	13.9