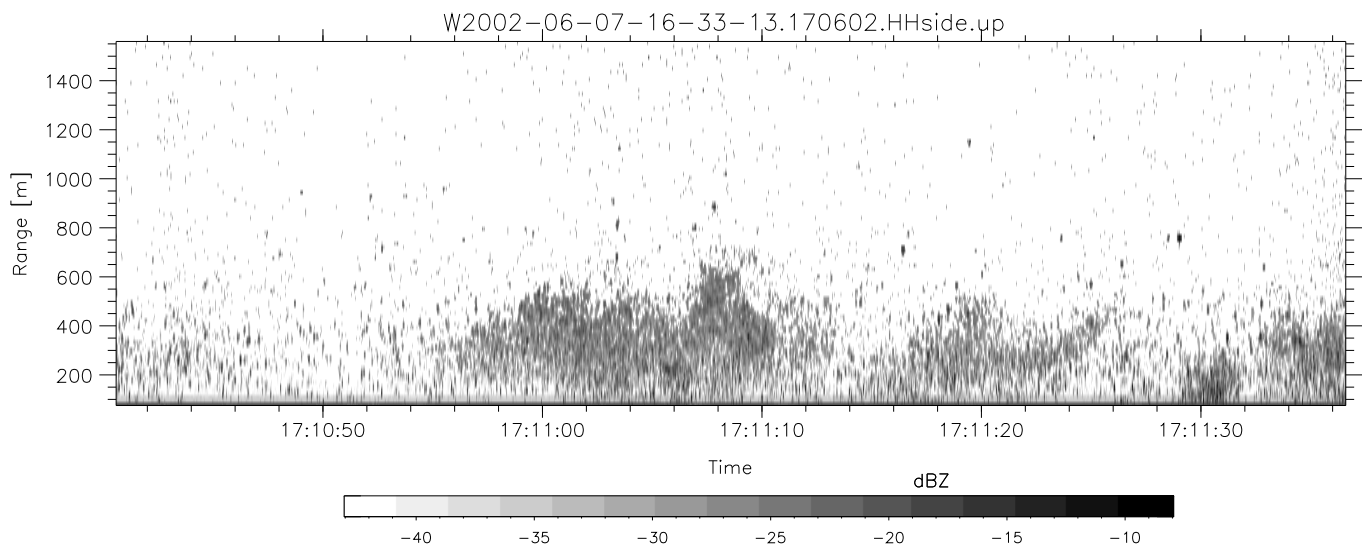
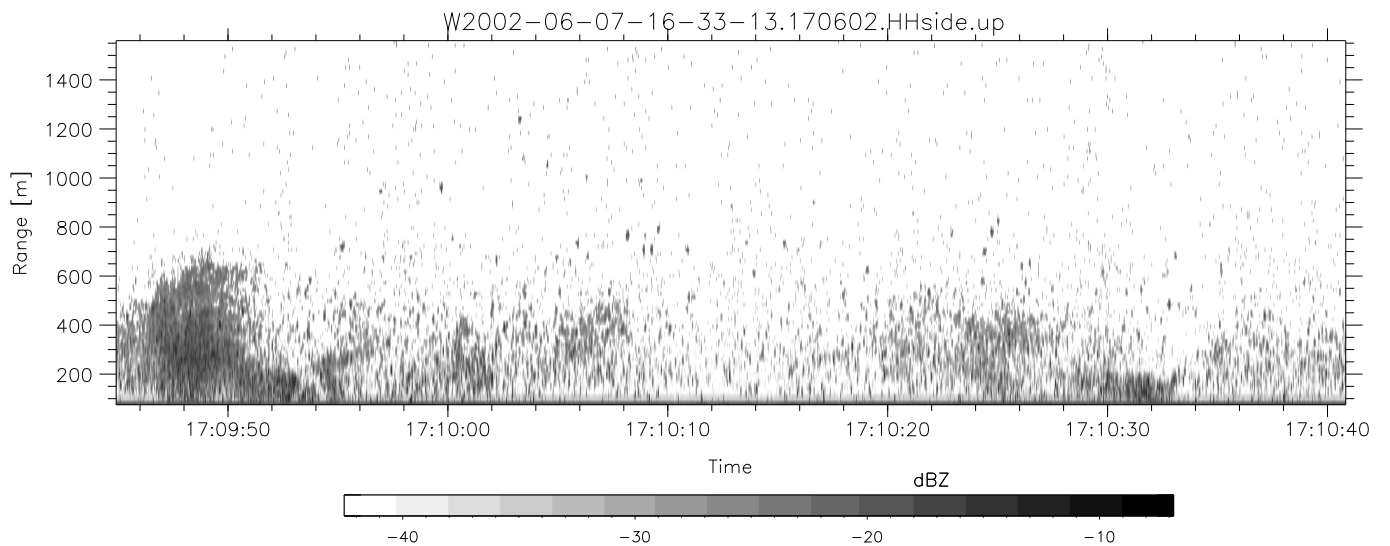
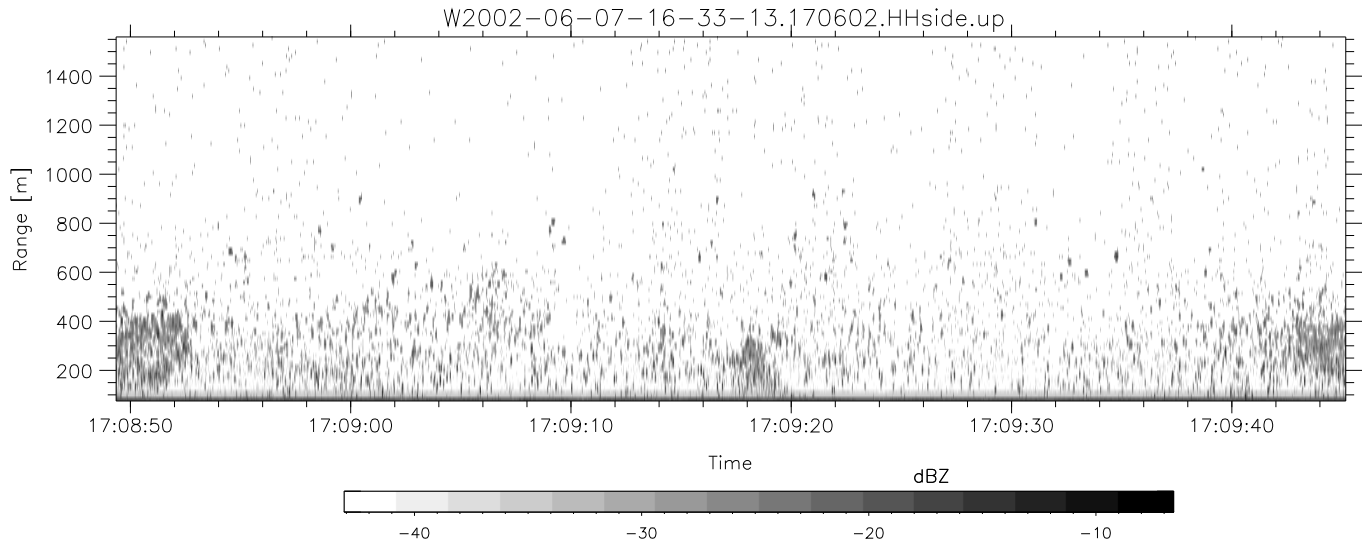


IHOP 2002 (dual-antenna config, modes 1,3,4,7) Data (cal: 49.0,50.0)

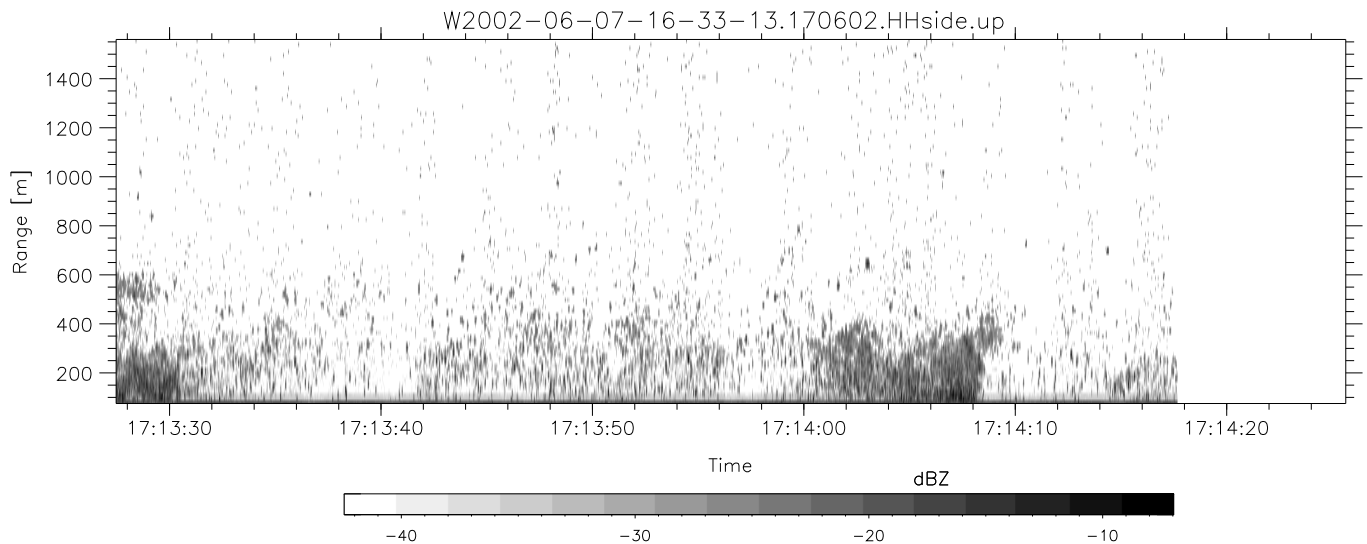
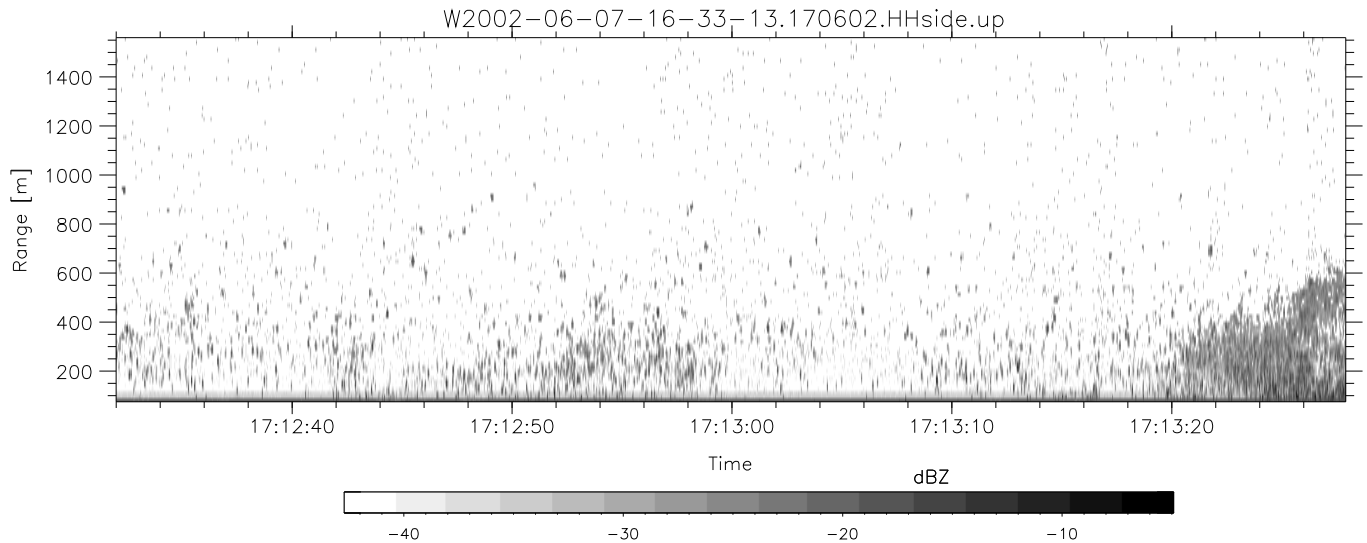
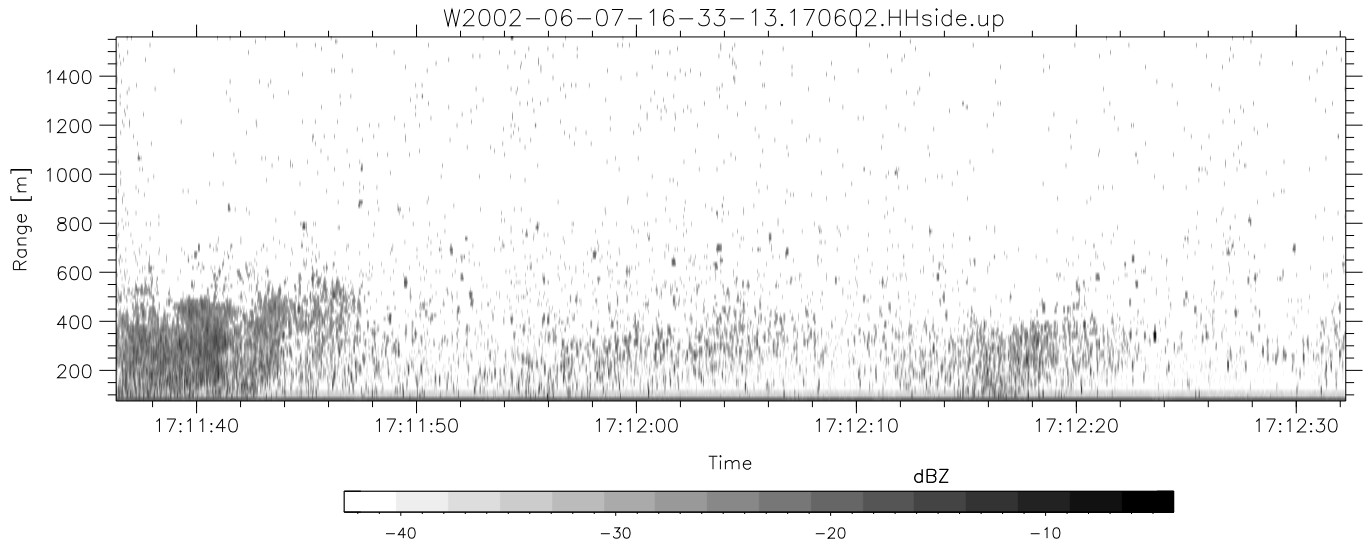
W2002-06-07-16-33-13 - PPMAG4
 IRIG:0,Time: 16:33:12.64 to 18:41:58.06, Dur: 7726s
 TimeLngth: 7725.42s, TimeInt: 29ms (34.4pps)
 TimeCor=0.0s, DSPDif(mn,min,mx):28,28,312
 PPS(min,max,std): 17,36,2.48
 Prof: 536 to 266091, NumProf(t/r): 265555/17069
 ProcTime/Recs: 17:06:02-17:14:17/68276-85344
 MxACQtime: 33ms; DRate: 192.4KB/s; Flags: 0, 0, 0
 Pulse: 275ns, IFfilt: 5.0MHz; ppPol: HH HV VV
 TxPol: HHVV, PRF: 20 10 20 10 kHz
 Range: Delay 75m, Spacing 15m, Gates 100
 Ave. Pulses: 84, Rng/Prof Aspect@90m/s: 5.7

	Min	Max	Mean	Std	Varc%
hhN(dB)	-67.45	-63.69	-65.65	-75.19	11.1
vvN(dB)	-67.77	-64.24	-66.07	-76.10	9.9
hhL(dB)	-15.03	-9.42	-11.07	-19.40	14.7
vvL(dB)	-25.45	-15.11	-17.36	-24.97	17.3
ppN(m/s)	-12.67	12.60	-0.03	4.15	
ppT(m/s)	-100.1	99.53	-0.27	32.75	
hh/vv(dB)	-NaN	49.21	15.92	30.71	3014
vh/hh(dB)	-44.67	-20.23	-28.12	-26.57	142.
hv/vv(dB)	-NaN	-10.19	-29.79	-26.37	219.
hh_jmp(dB)	-2.72	2.22	-0.08	-8.69	13.8
vv_jmp(dB)	-2.58	2.11	-0.07	-8.64	13.9



IHOP 2002 (dual-antenna config, modes 1,3,4,7) Data (cal: 49.0,50.0)

	Min	Max	Mean	Std	Varc%	
W2002-06-07-16-33-13 - PPMAG4						
IRIG:0,Time: 16:33:12.64 to 18:41:58.06, Dur: 7726s	hhN (dB)	-67.45	-63.69	-65.65	-75.19	11.1
TimeLngth: 7725.42s, TimeInt: 29ms (34.4pps)	vvN (dB)	-67.77	-64.24	-66.07	-76.10	9.9
TimeCor=0.0s, DSPDif(mn,min,mx):28,28,312	hhL (dB)	-15.03	-9.42	-11.07	-19.40	14.7
PPS(min,max,std): 17,36,2.48	vvL (dB)	-25.45	-15.11	-17.36	-24.97	17.3
Prof: 536 to 266091, NumProf(t/r): 265555/17069	ppN (m/s)	-12.67	12.60	-0.03	4.15	
ProcTime/Recs: 17:06:02-17:14:17/68276-85344	ppT (m/s)	-100.1	99.53	-0.27	32.75	
MxACQtime: 33ms; DRate: 192.4KB/s; Flags: 0, 0, 0	hh/vv (dB)	-NaN	49.21	15.92	30.71	3014
Pulse: 275ns, IFfilt: 5.0MHz; ppPol: HH HV VV	vh/hh (dB)	-44.67	-20.23	-28.12	-26.57	142.
TxPol: HHVV, PRF: 20 10 20 10 kHz	hv/vv (dB)	-NaN	-10.19	-29.79	-26.37	219.
Range: Delay 75m, Spacing 15m, Gates 100	hn/jmp (dB)	-2.72	2.22	-0.08	-8.69	13.8
Ave. Pulses: 84, Rng/Prof Aspect@90m/s: 5.7	vn/jmp (dB)	-2.58	2.11	-0.07	-8.64	13.9



IHOP 2002 (dual-antenna config, modes 1,3,4,7) Data (cal: 49.0,50.0)

W2002-06-07-16-33-13 - PPMAG4
 IRIG:0,Time: 16:33:12.64 to 18:41:58.06, Dur: 7726s
 TimeLngth: 7725.42s, TimeInt: 29ms (34.4pps)
 TimeCor=0.0s, DSPDif(mn,min,mx):28,28,312
 PPS(min,max,std): 17,36,2.48
 Prof: 536 to 266091, NumProf(t/r): 265555/17069
 ProcTime/Recs: 17:06:02-17:14:17/68276-85344
 MxACQtime: 33ms; DRate: 192.4KB/s; Flags: 0, 0, 0
 Pulse: 275ns, IFilt: 5.0MHz; ppPol: HH HV VV
 TxPol: HHVV, PRF: 20 10 20 10 kHz
 Range: Delay 75m, Spacing 15m, Gates 100
 Ave. Pulses: 84, Rng/Prof Aspect@90m/s: 5.7

	Min	Max	Mean	Std	Varc%
hhN (dB)	-67.45	-63.69	-65.65	-75.19	11.1
vvN (dB)	-67.77	-64.24	-66.07	-76.10	9.9
hhL (dB)	-15.03	-9.42	-11.07	-19.40	14.7
vvL (dB)	-25.45	-15.11	-17.36	-24.97	17.3
ppN (m/s)	-12.67	12.60	-0.03	4.15	
ppT (m/s)	-100.1	99.53	-0.27	32.75	
hh/vv (dB)	-NaN	49.21	15.92	30.71	3014
vh/hh (dB)	-44.67	-20.23	-28.12	-26.57	142.
hv/vv (dB)	-NaN	-10.19	-29.79	-26.37	219.
hnjmp (dB)	-2.72	2.22	-0.08	-8.69	13.8
vnjmp (dB)	-2.58	2.11	-0.07	-8.64	13.9