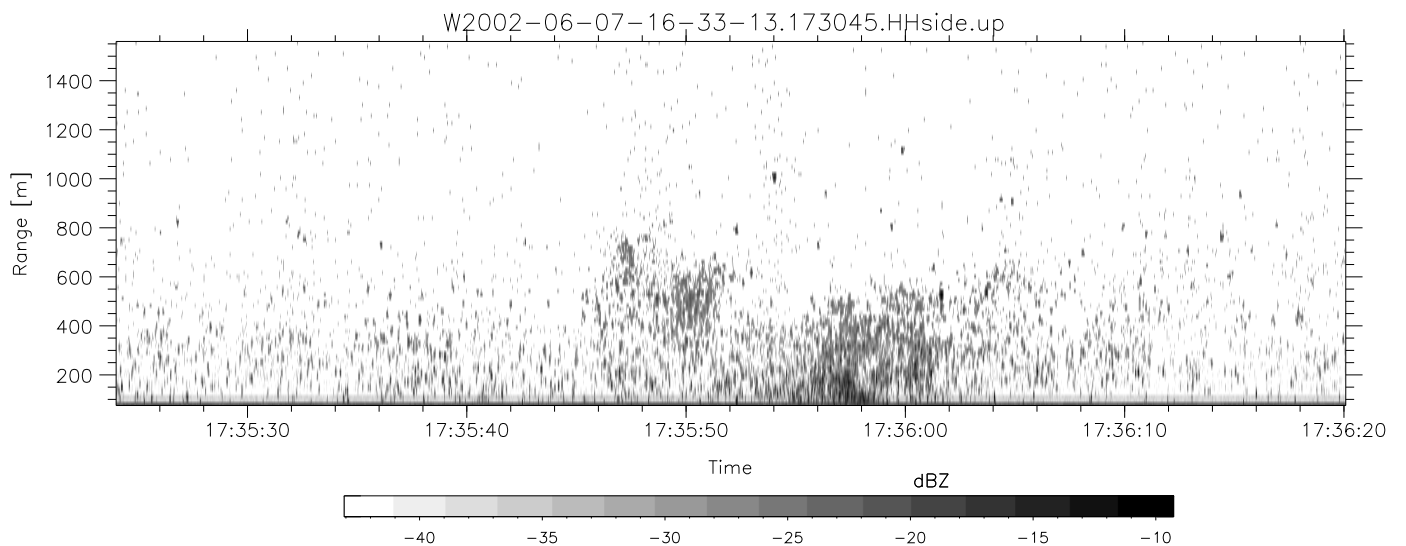
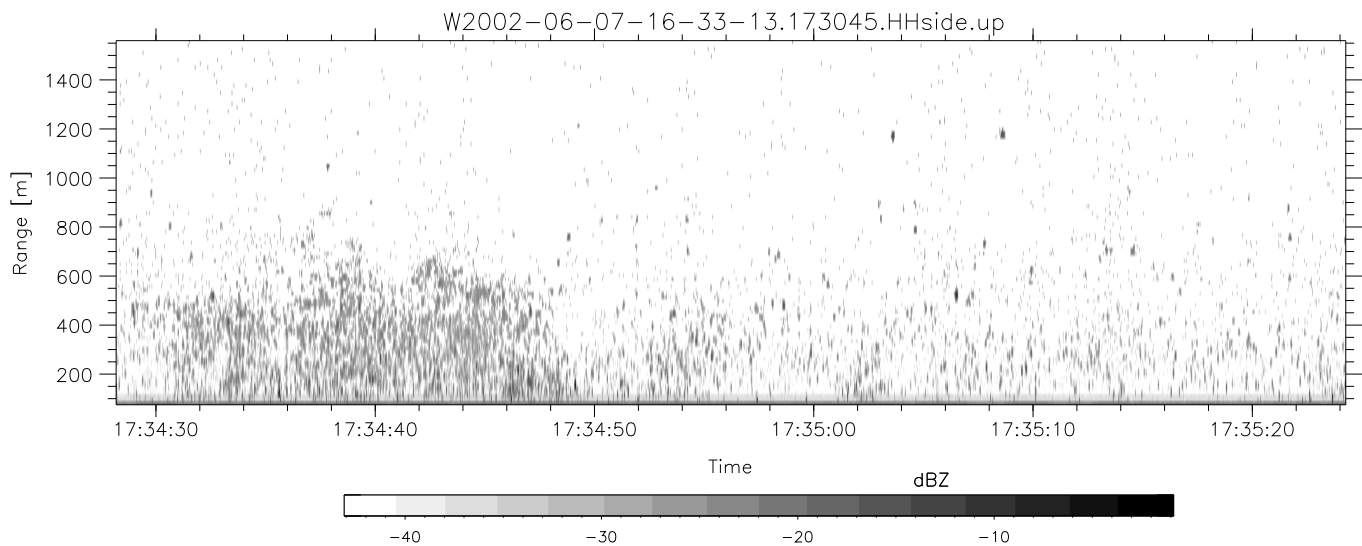
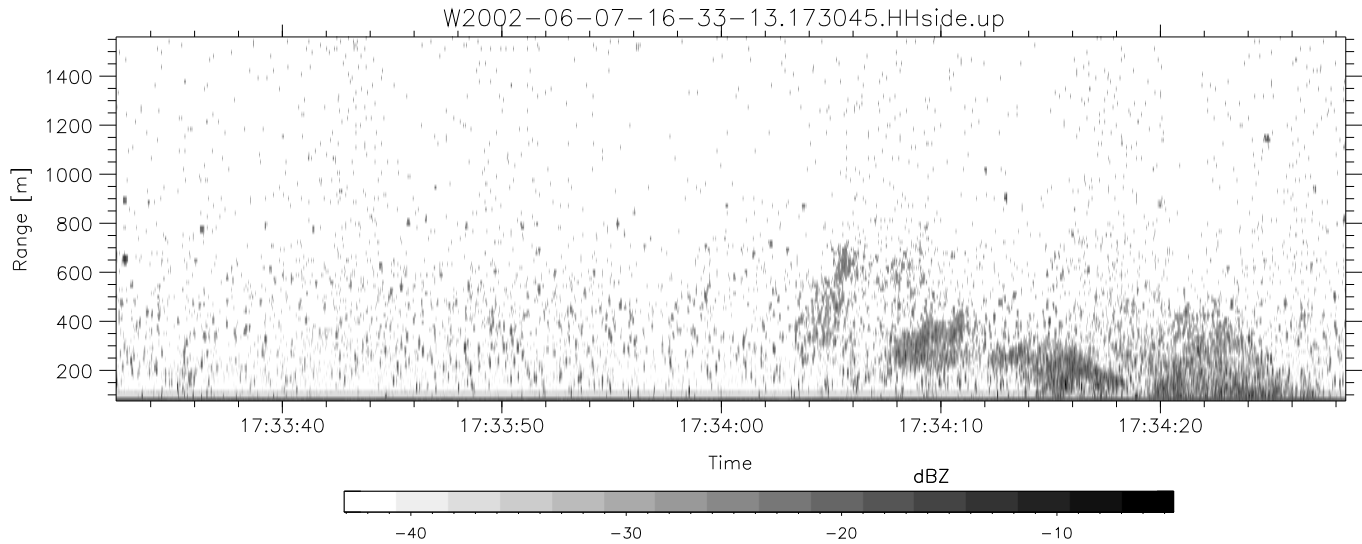


IHOP 2002 (dual-antenna config, modes 1,3,4,7) Data (cal: 49.0,50.0)

W2002-06-07-16-33-13 - PPMAG4  
 IRIG:0,Time: 16:33:12.64 to 18:41:58.06, Dur: 7726s  
 TimeLngth: 7725.42s, TimeInt: 29ms (34.4pps)  
 TimeCor=0.0s, DSPDif(mn,min,mx):28,28,315  
 PPS(min,max,std): 25,36,2.17  
 Prof: 536 to 266091, NumProf(t/r): 265555/17069  
 ProcTime/Recs: 17:30:45-17:38:59/119483-136551  
 MxACQtime: 33ms; DRate: 192.4KB/s; Flags: 0, 0, 0  
 Pulse: 275ns, IFfilt: 5.0MHz; ppPol: HH HV VV  
 TxPol: HHVV, PRF: 20 10 20 10 kHz  
 Range: Delay 75m, Spacing 15m, Gates 100  
 Ave. Pulses: 84, Rng/Prof Aspect@90m/s: 5.7

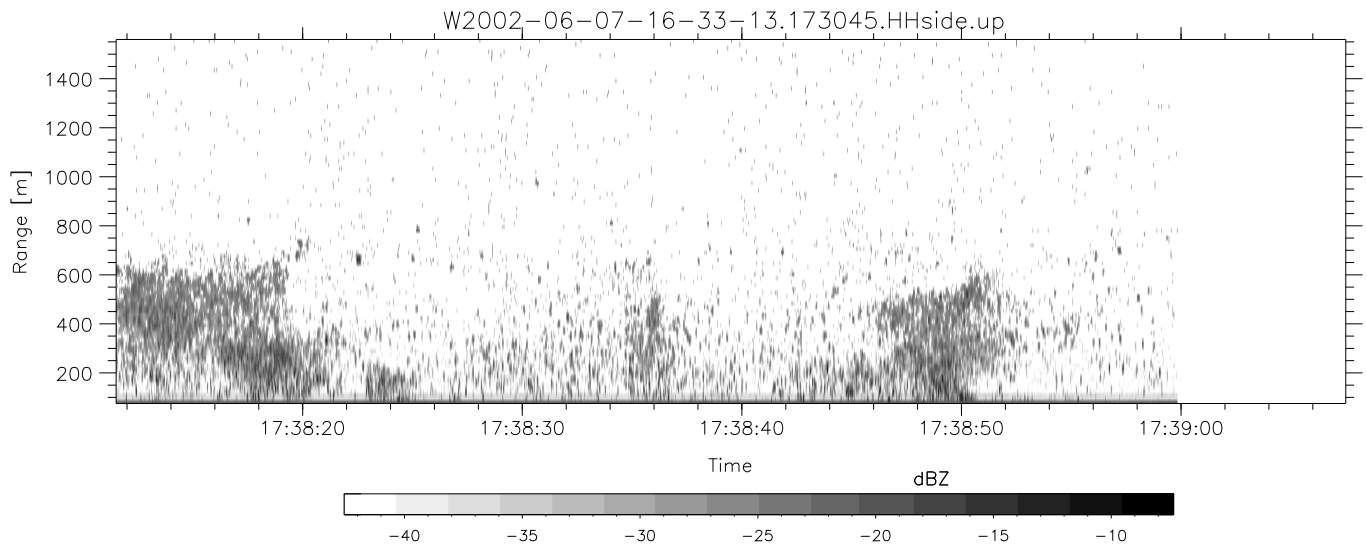
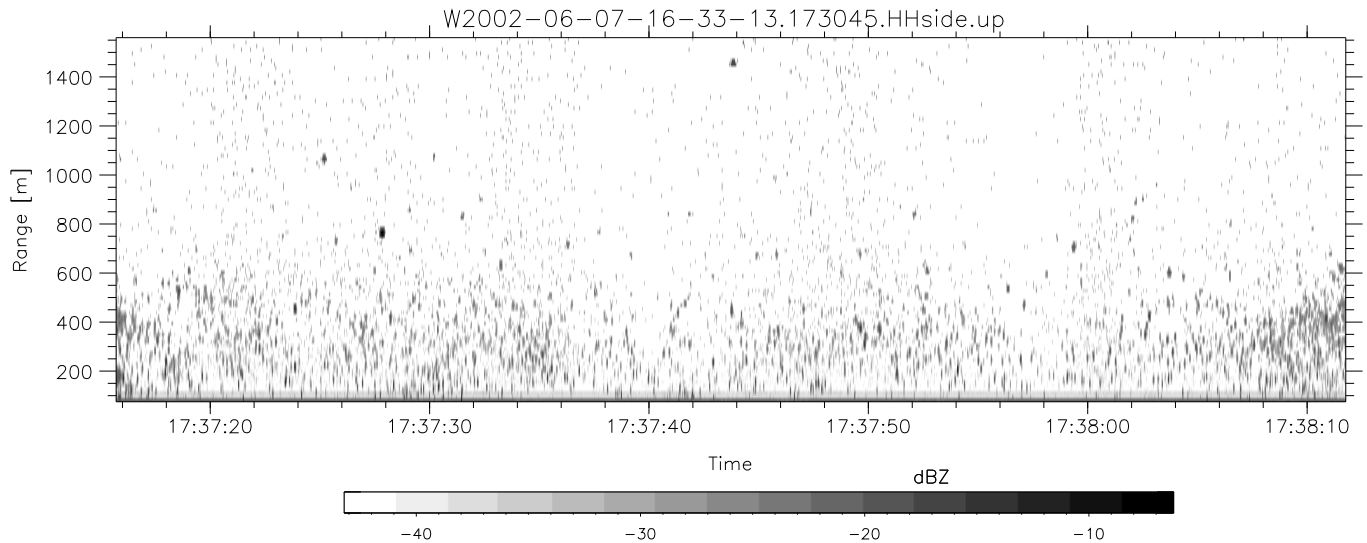
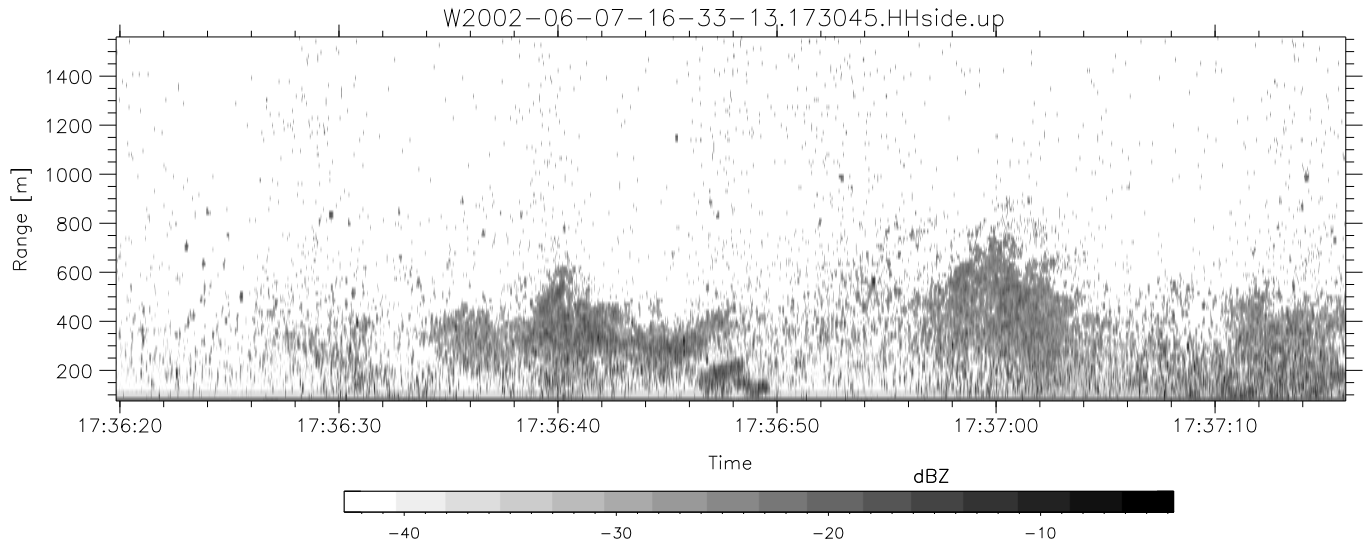
	Min	Max	Mean	Std	Varc%
hhN(dB)	-67.73	-64.38	-66.01	-75.89	10.3
vvN(dB)	-68.25	-64.90	-66.46	-76.43	10.1
hhL(dB)	-19.51	-10.29	-12.62	-20.62	15.9
vvL(dB)	-23.17	-13.15	-15.55	-22.42	20.5
ppN(m/s)	-12.13	12.24	-0.03	4.17	
ppT(m/s)	-95.86	96.70	-0.20	32.95	
hh/vv(dB)	-NaN	52.94	17.70	33.40	3714
vh/hh(dB)	-NaN	-2.13	-14.36	-8.66	370.
hv/vv(dB)	-NaN	-14.62	-34.52	-30.64	244.
hnjmp(dB)	-2.04	2.39	0.17	-8.39	13.9
vnjmp(dB)	-2.85	2.23	0.17	-8.34	14.1



IHOP 2002 (dual-antenna config, modes 1,3,4,7) Data (cal: 49.0,50.0)

W2002-06-07-16-33-13 - PPMAG4  
 IRIG:0,Time: 16:33:12.64 to 18:41:58.06, Dur: 7726s  
 TimeLngth: 7725.42s, TimeInt: 29ms (34.4pps)  
 TimeCor=0.0s, DSPDif(mn,min,mx):28,28,315  
 PPS(min,max,std): 25,36,2.17  
 Prof: 536 to 266091, NumProf(t/r): 265555/17069  
 ProcTime/Recs: 17:30:45-17:38:59/119483-136551  
 MxACQtime: 33ms; DRate: 192.4KB/s; Flags: 0, 0, 0  
 Pulse: 275ns, IFilt: 5.0MHz; ppPol: HH HV VV  
 TxPol: HHVV, PRF: 20 10 20 10 kHz  
 Range: Delay 75m, Spacing 15m, Gates 100  
 Ave. Pulses: 84, Rng/Prof Aspect@90m/s: 5.7

	Min	Max	Mean	Std	Varc%
hhN (dB)	-67.73	-64.38	-66.01	-75.89	10.3
vvN (dB)	-68.25	-64.90	-66.46	-76.43	10.1
hhL (dB)	-19.51	-10.29	-12.62	-20.62	15.9
vvL (dB)	-23.17	-13.15	-15.55	-22.42	20.5
ppN (m/s)	-12.13	12.24	-0.03	4.17	
ppT (m/s)	-95.86	96.70	-0.20	32.95	
hh/vv (dB)	-NaN	52.94	17.70	33.40	3714
vh/hh (dB)	-NaN	-2.13	-14.36	-8.66	370.
hv/vv (dB)	-NaN	-14.62	-34.52	-30.64	244.
hnjmp (dB)	-2.04	2.39	0.17	-8.39	13.9
vnjmp (dB)	-2.85	2.23	0.17	-8.34	14.1



IHOP 2002 (dual-antenna config, modes 1,3,4,7) Data (cal: 49.0,50.0)

W2002-06-07-16-33-13 - PPMAG4  
 IRIG:0,Time: 16:33:12.64 to 18:41:58.06, Dur: 7726s  
 TimeLngth: 7725.42s, TimeInt: 29ms (34.4pps)  
 TimeCor=0.0s, DSPDif(mn,min,mx):28,28,315  
 PPS(min,max,std): 25,36,2.17  
 Prof: 536 to 266091, NumProf(t/r): 265555/17069  
 ProcTime/Recs: 17:30:45-17:38:59/119483-136551  
 MxACQtime: 33ms; DRate: 192.4KB/s; Flags: 0, 0, 0  
 Pulse: 275ns, IFfilt: 5.0MHz; ppPol: HH HV VV  
 TxPol: HHVV, PRF: 20 10 20 10 kHz  
 Range: Delay 75m, Spacing 15m, Gates 100  
 Ave. Pulses: 84, Rng/Prof Aspect@90m/s: 5.7

	Min	Max	Mean	Std	Varc%
hhN (dB)	-67.73	-64.38	-66.01	-75.89	10.3
vvN (dB)	-68.25	-64.90	-66.46	-76.43	10.1
hhL (dB)	-19.51	-10.29	-12.62	-20.62	15.9
vvL (dB)	-23.17	-13.15	-15.55	-22.42	20.5
ppN (m/s)	-12.13	12.24	-0.03	4.17	
ppT (m/s)	-95.86	96.70	-0.20	32.95	
hh/vv (dB)	-NaN	52.94	17.70	33.40	3714
vh/hh (dB)	-NaN	-2.13	-14.36	-8.66	370.
hv/vv (dB)	-NaN	-14.62	-34.52	-30.64	244.
hnjmp (dB)	-2.04	2.39	0.17	-8.39	13.9
vnjmp (dB)	-2.85	2.23	0.17	-8.34	14.1