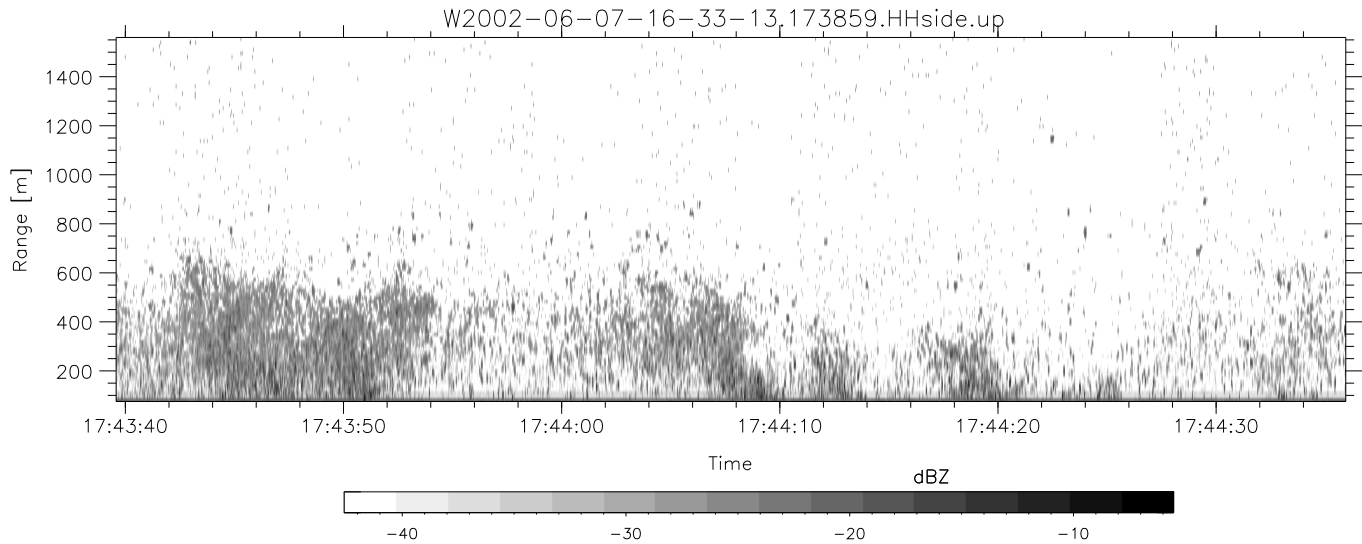
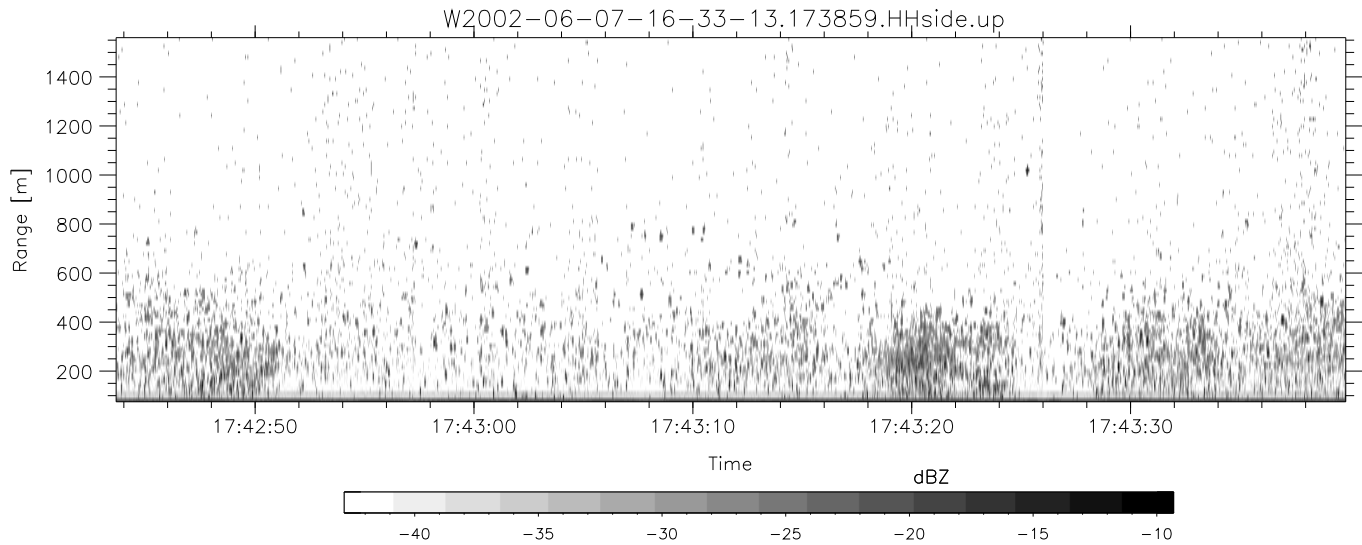
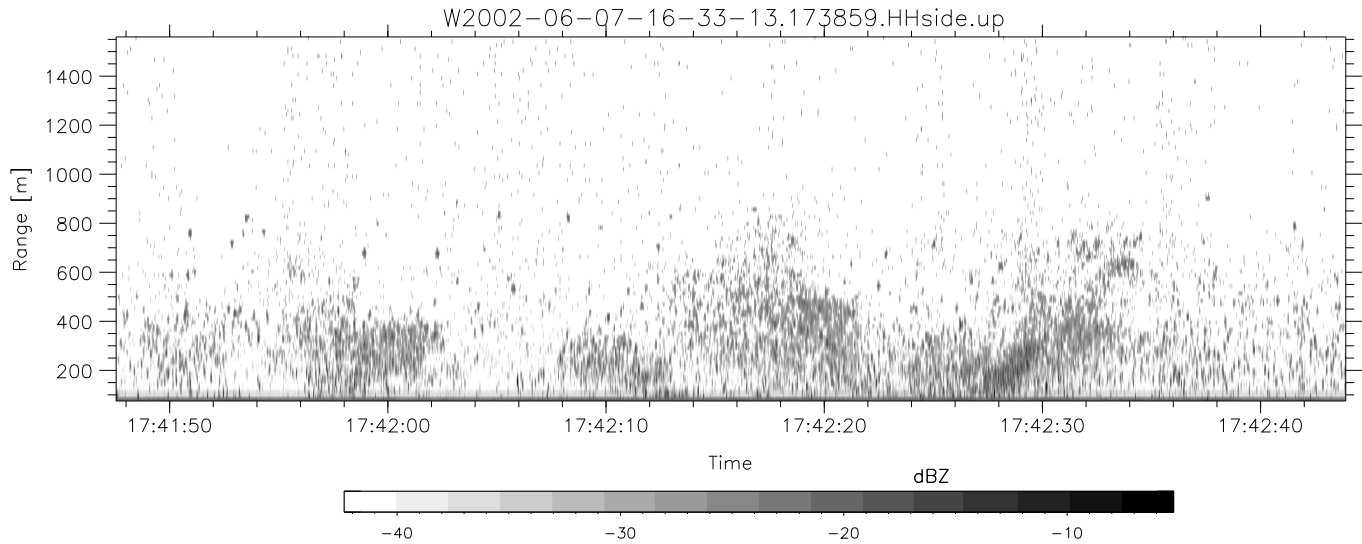


IHOP 2002 (dual-antenna config, modes 1,3,4,7) Data (cal: 49.0,50.0)

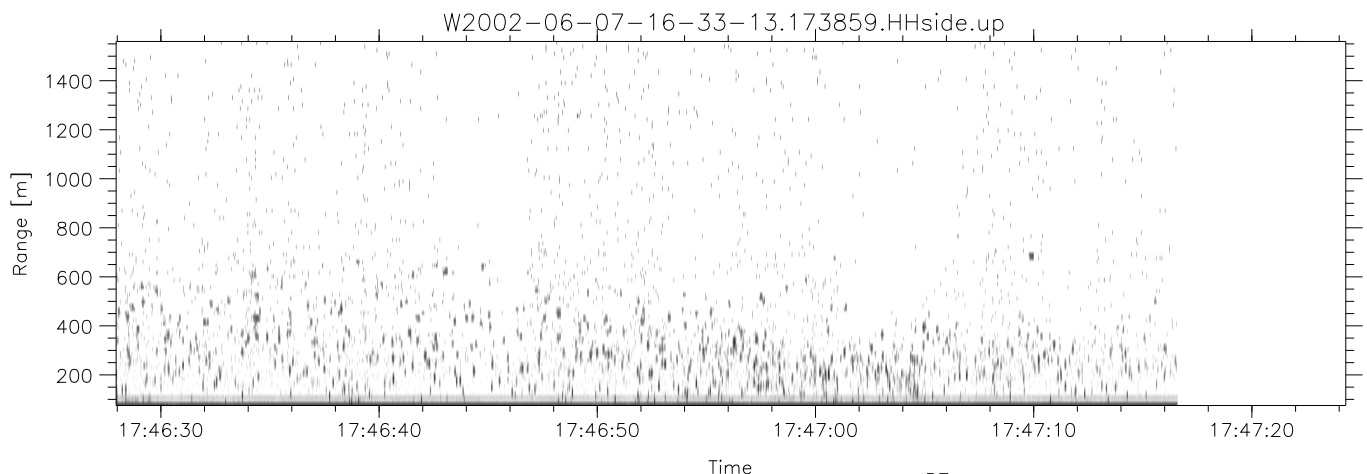
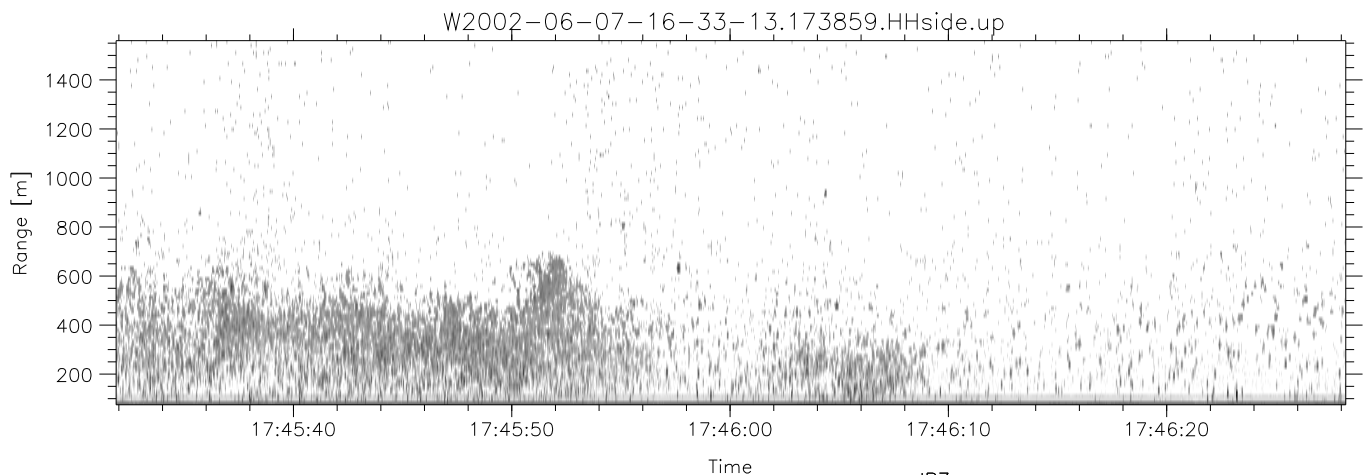
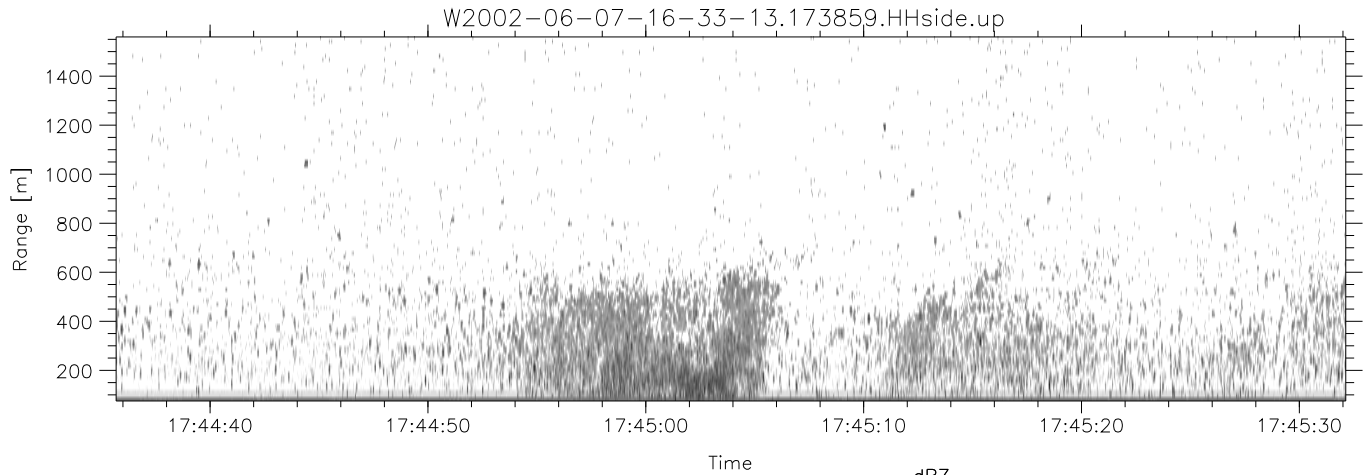
W2002-06-07-16-33-13 - PPMAG4  
 IRIG:0,Time: 16:33:12.64 to 18:41:58.06, Dur: 7726s  
 TimeLngth: 7725.42s, TimeInt: 29ms (34.4pps)  
 TimeCor=0.0s, DSPDif(mn,min,mx):29,28,314  
 PPS(min,max,std): 24,36,2.23  
 Prof: 536 to 266091, NumProf(t/r): 265555/17069  
 ProcTime/Recs: 17:38:59-17:47:16/136552-153620  
 MxACQtime: 33ms; DRate: 192.4KB/s; Flags: 0, 0, 0  
 Pulse: 275ns, IFilt: 5.0MHz; ppPol: HH HV VV  
 TxPol: HHVV, PRF: 20 10 20 10 kHz  
 Range: Delay 75m, Spacing 15m, Gates 100  
 Ave. Pulses: 84, Rng/Prof Aspect@90m/s: 5.7

	Min	Max	Mean	Std	Varc%
hhN (dB)	-67.88	-64.08	-65.85	-75.60	10.6
vvN (dB)	-68.41	-64.92	-66.58	-76.54	10.1
hhL (dB)	-17.12	-10.86	-12.85	-21.08	15.0
vvL (dB)	-24.54	-13.50	-15.48	-21.99	22.3
ppN (m/s)	-12.32	12.87	-0.05	4.15	
ppT (m/s)	-97.31	101.64	-0.36	32.79	
hh/vv (dB)	-NaN	45.92	16.02	28.10	1612
vh/hh (dB)	-NaN	-12.50	-23.86	-19.74	257.
hv/vv (dB)	-NaN	-11.90	-33.18	-30.39	190.
hh_jmp (dB)	-2.51	2.25	-0.08	-8.58	14.1
vv_jmp (dB)	-2.63	2.14	-0.09	-8.54	14.3



IHOP 2002 (dual-antenna config, modes 1,3,4,7) Data (cal: 49.0,50.0)

W2002-06-07-16-33-13 - PPMAG4	Min	Max	Mean	Std	Varc%	
IRIG:0,Time: 16:33:12.64 to 18:41:58.06, Dur: 7726s	-67.88	-64.08	-65.85	-75.60	10.6	
TimeLngth: 7725.42s, TimeInt: 29ms (34.4pps)	vvN (dB)	-68.41	-64.92	-66.58	-76.54	10.1
TimeCor=0.0s, DSPDif(mn,min,mx):29,28,314	hhL (dB)	-17.12	-10.86	-12.85	-21.08	15.0
PPS(min,max,std): 24,36,2.23	vvL (dB)	-24.54	-13.50	-15.48	-21.99	22.3
Prof: 536 to 266091, NumProf(t/r): 265555/17069	ppN(m/s)	-12.32	12.87	-0.05	4.15	
ProcTime/Recs: 17:38:59-17:47:16/136552-153620	ppT(m/s)	-97.31	101.64	-0.36	32.79	
MxACQtime: 33ms; DRate: 192.4KB/s; Flags: 0, 0, 0	hh/vv (dB)	-NaN	45.92	16.02	28.10	1612
Pulse: 275ns, IFfilt: 5.0MHz; ppPol: HH HV VV	vh/hh (dB)	-NaN	-12.50	-23.86	-19.74	257.
TxPol: HHVV, PRF: 20 10 20 10 kHz	hv/vv (dB)	-NaN	-11.90	-33.18	-30.39	190.
Range: Delay 75m, Spacing 15m, Gates 100	hnjmp (dB)	-2.51	2.25	-0.08	-8.58	14.1
Ave. Pulses: 84, Rng/Prof Aspect@90m/s: 5.7	vnjmp (dB)	-2.63	2.14	-0.09	-8.54	14.3



IHOP 2002 (dual-antenna config, modes 1,3,4,7) Data (cal: 49.0,50.0)

W2002-06-07-16-33-13 - PPMAG4  
 IRIG:0,Time: 16:33:12.64 to 18:41:58.06, Dur: 7726s  
 TimeLngth: 7725.42s, TimeInt: 29ms (34.4pps)  
 TimeCor=0.0s, DSPDif(mn,min,mx):29,28,314  
 PPS(min,max,std): 24,36,2.23  
 Prof: 536 to 266091, NumProf(t/r): 265555/17069  
 ProcTime/Recs: 17:38:59-17:47:16/136552-153620  
 MxACQtime: 33ms; DRate: 192.4KB/s; Flags: 0, 0, 0  
 Pulse: 275ns, IFfilt: 5.0MHz; ppPol: HH HV VV  
 TxPol: HHVV, PRF: 20 10 20 10 kHz  
 Range: Delay 75m, Spacing 15m, Gates 100  
 Ave. Pulses: 84, Rng/Prof Aspect@90m/s: 5.7

	Min	Max	Mean	Std	Varc%
hhN(dB)	-67.88	-64.08	-65.85	-75.60	10.6
vvN(dB)	-68.41	-64.92	-66.58	-76.54	10.1
hhL(dB)	-17.12	-10.86	-12.85	-21.08	15.0
vvL(dB)	-24.54	-13.50	-15.48	-21.99	22.3
ppN(m/s)	-12.32	12.87	-0.05	4.15	
ppT(m/s)	-97.31	101.64	-0.36	32.79	
hh/vv(dB)	-NaN	45.92	16.02	28.10	1612
vh/hh(dB)	-NaN	-12.50	-23.86	-19.74	257.
hv/vv(dB)	-NaN	-11.90	-33.18	-30.39	190.
hnjmp(dB)	-2.51	2.25	-0.08	-8.58	14.1
vnjmp(dB)	-2.63	2.14	-0.09	-8.54	14.3