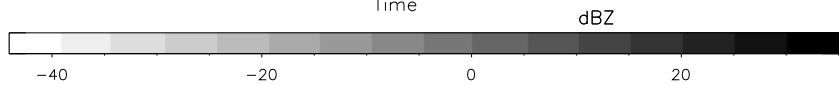
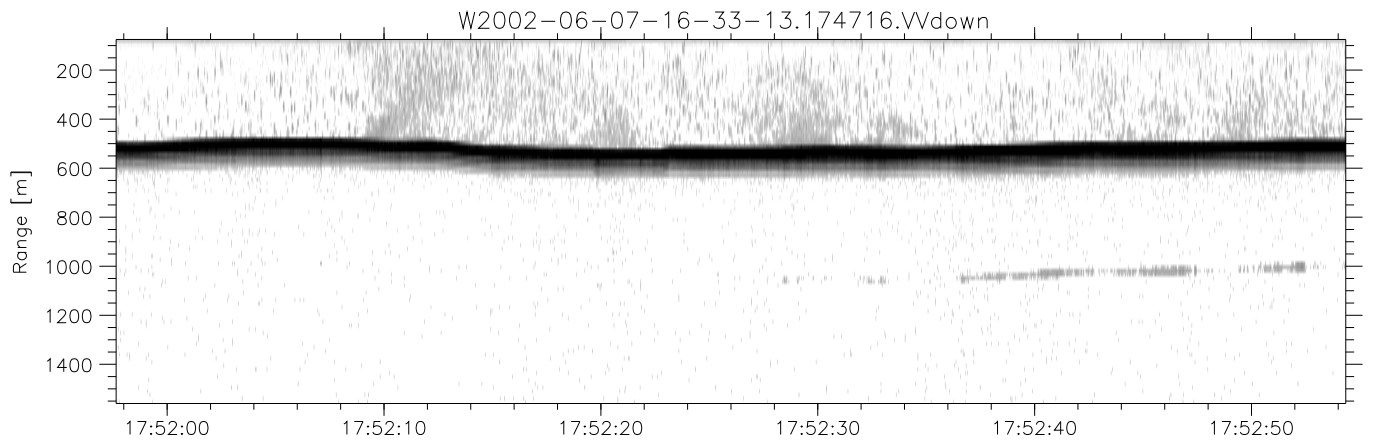
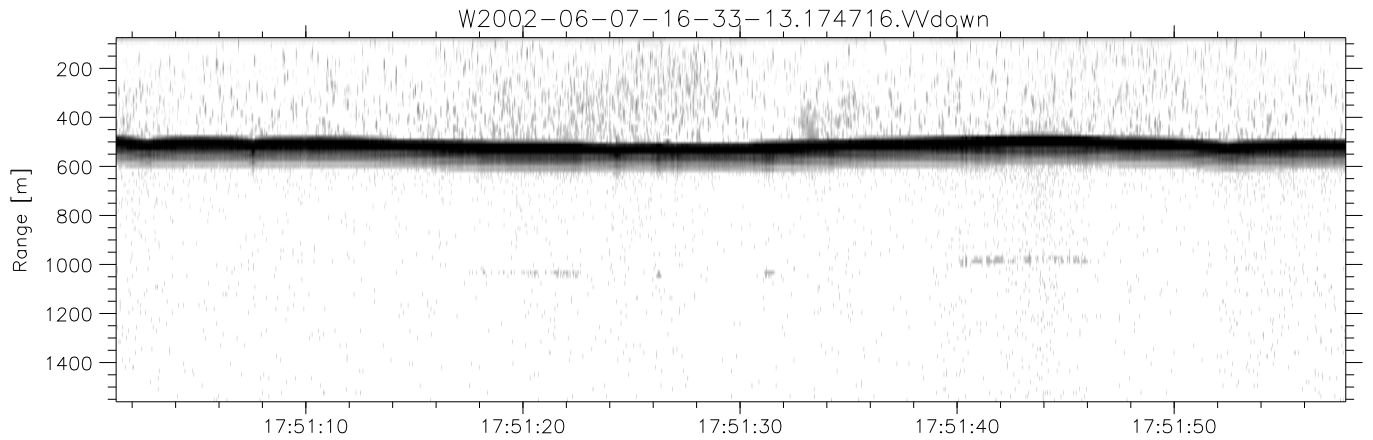
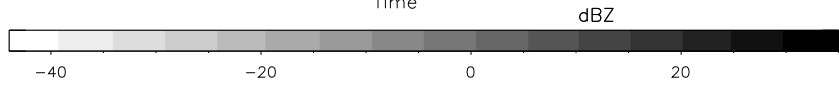
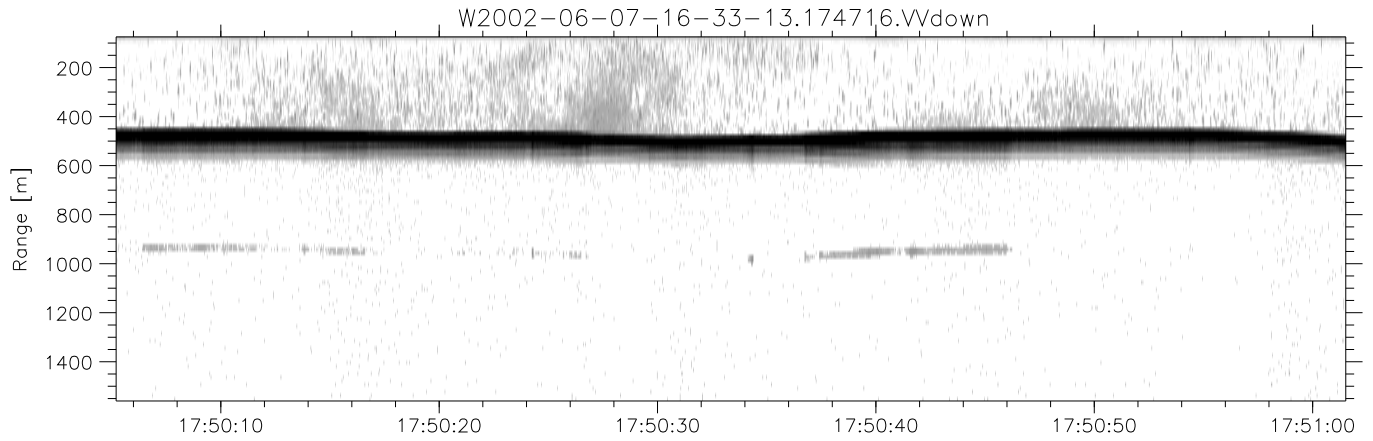


IHOP 2002 (dual-antenna config, modes 1,3,4,7) Data (cal: 49.0,50.0)

W2002-06-07-16-33-13 - PPMAG4
 IRIG:0,Time: 16:33:12.64 to 18:41:58.06, Dur: 7726s
 TimeLngth: 7725.42s, TimeInt: 29ms (34.4pps)
 TimeCor=0.0s, DSPDif(mn,min,mx):29,28,361
 PPS(min,max,std): 23,36,2.28
 Prof: 536 to 266091, NumProf(t/r): 265555/17069
 ProcTime/Recs: 17:47:16-17:55:35/153621-170689
 MxACQtime: 33ms; DRate: 192.4KB/s; Flags: 0, 0, 0
 Pulse: 275ns, IFfilt: 5.0MHz; ppPol: HH HV VV
 TxPol: HHVV, PRF: 20 10 20 10 kHz
 Range: Delay 75m, Spacing 15m, Gates 100
 Ave. Pulses: 84, Rng/Prof Aspect@90m/s: 5.7

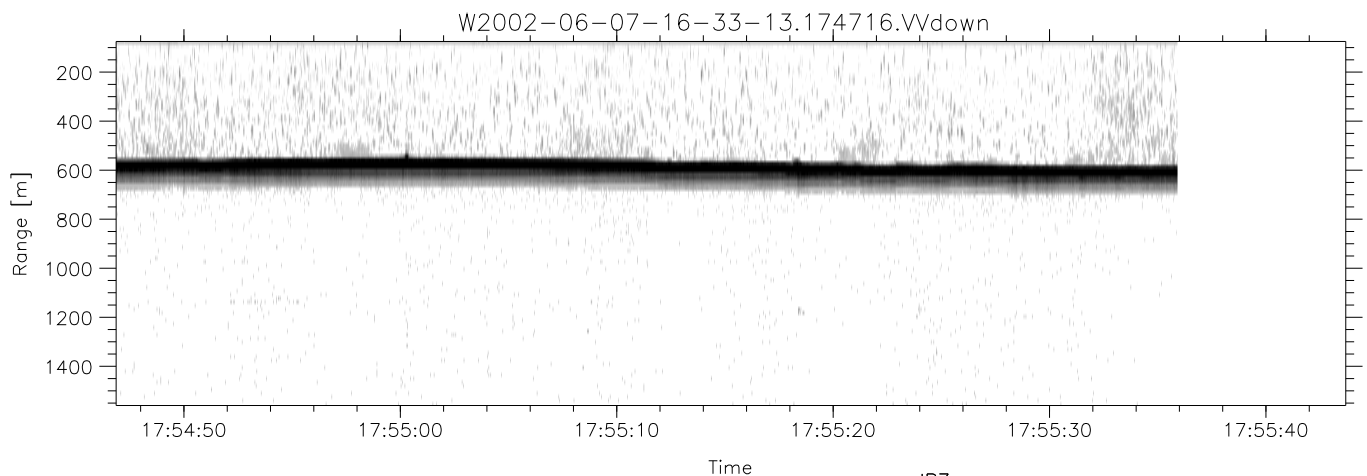
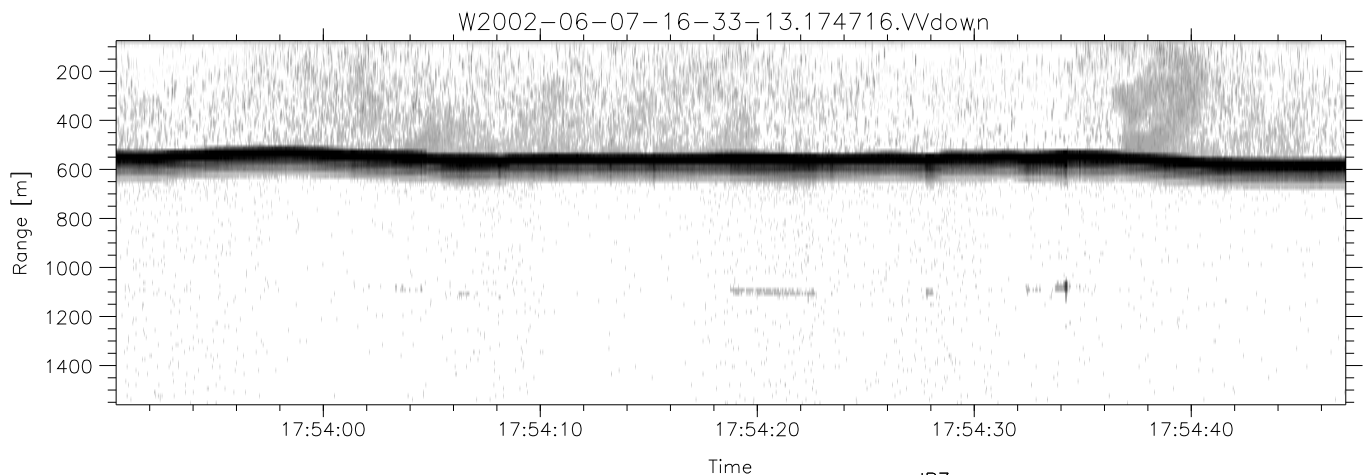
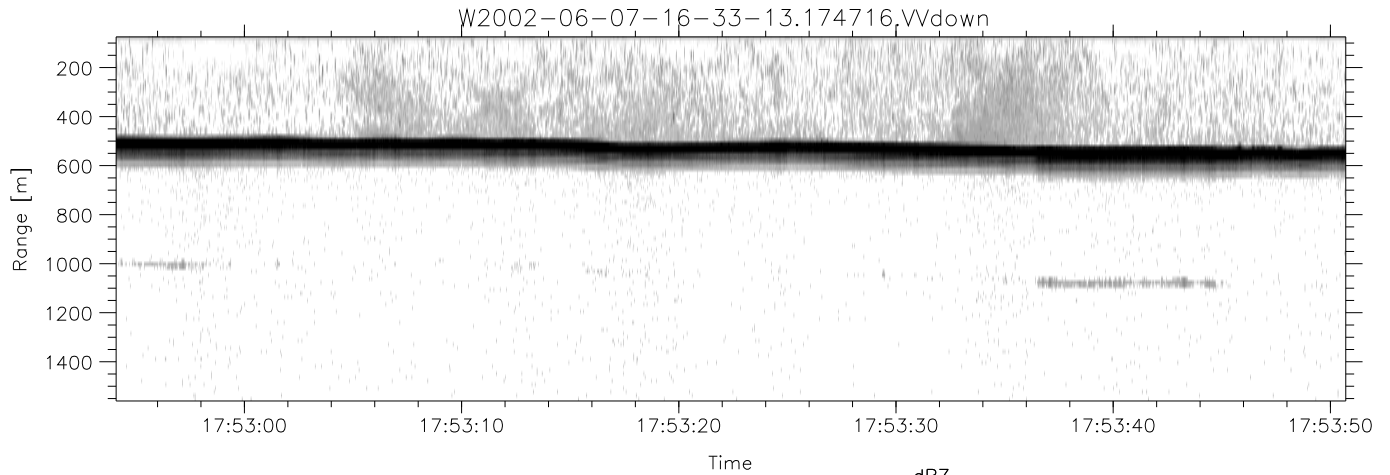
	Min	Max	Mean	Std	Varc%
hhN(dB)	-67.84	-64.12	-66.08	-75.62	11.1
vvN(dB)	-68.58	-64.99	-66.67	-76.64	10.1
hhL(dB)	-14.36	-10.52	-11.79	-21.33	11.1
vvL(dB)	-22.61	-13.29	-17.10	-22.30	30.2
ppN(m/s)	-12.01	12.70	-0.00	4.13	
ppT(m/s)	-94.87	100.31	-0.04	32.64	
hh/vv(dB)	-NaN	49.69	16.65	36.17	8964
vh/hh(dB)	-41.73	-31.36	-34.65	-36.67	62.9
hv/vv(dB)	-NaN	-33.54	-54.16	-45.96	660.
hnjmp(dB)	-1.98	2.31	0.19	-8.32	14.1
vnjmp(dB)	-2.55	2.41	0.18	-8.35	14.0



IHOP 2002 (dual-antenna config, modes 1,3,4,7) Data (cal: 49.0,50.0)

W2002-06-07-16-33-13 - PPMAG4
 IRIG:0,Time: 16:33:12.64 to 18:41:58.06, Dur: 7726s
 TimeLngth: 7725.42s, TimeInt: 29ms (34.4pps)
 TimeCor=0.0s, DSPDif(mn,min,mx):29,28,361
 PPS(min,max,std): 23,36,2.28
 Prof: 536 to 266091, NumProf(t/r): 265555/17069
 ProcTime/Recs: 17:47:16-17:55:35/153621-170689
 MxAcQtime: 33ms; DRate: 192.4KB/s; Flags: 0, 0, 0
 Pulse: 275ns, IFilt: 5.0MHz; ppPol: HH HV VV
 TxPol: HHVV, PRF: 20 10 20 10 kHz
 Range: Delay 75m, Spacing 15m, Gates 100
 Ave. Pulses: 84, Rng/Prof Aspect@90m/s: 5.7

	Min	Max	Mean	Std	Varc%
hhN(dB)	-67.84	-64.12	-66.08	-75.62	11.1
vvN(dB)	-68.58	-64.99	-66.67	-76.64	10.1
hhL(dB)	-14.36	-10.52	-11.79	-21.33	11.1
vvL(dB)	-22.61	-13.29	-17.10	-22.30	30.2
ppN(m/s)	-12.01	12.70	-0.00	4.13	
ppT(m/s)	-94.87	100.31	-0.04	32.64	
hh/vv(dB)	-NaN	49.69	16.65	36.17	8964
vh/hh(dB)	-41.73	-31.36	-34.65	-36.67	62.9
hv/vv(dB)	-NaN	-33.54	-54.16	-45.96	660.
hnjmp(dB)	-1.98	2.31	0.19	-8.32	14.1
vnjmp(dB)	-2.55	2.41	0.18	-8.35	14.0



IHOP 2002 (dual-antenna config, modes 1,3,4,7) Data (cal: 49.0,50.0)

W2002-06-07-16-33-13 - PPMAG4
 IRIG:0,Time: 16:33:12.64 to 18:41:58.06, Dur: 7726s
 TimeLngth: 7725.42s, TimeInt: 29ms (34.4pps)
 TimeCor=0.0s, DSPDif(mn,min,mx):29,28,361
 PPS(min,max,std): 23,36,2.28
 Prof: 536 to 266091, NumProf(t/r): 265555/17069
 ProcTime/Recs: 17:47:16-17:55:35/153621-170689
 MxACQtime: 33ms; DRate: 192.4KB/s; Flags: 0, 0, 0
 Pulse: 275ns, IFilt: 5.0MHz; ppPol: HH HV VV
 TxPol: HHVV, PRF: 20 10 20 10 kHz
 Range: Delay 75m, Spacing 15m, Gates 100
 Ave. Pulses: 84, Rng/Prof Aspect@90m/s: 5.7

	Min	Max	Mean	Std	Varc%
hhN(dB)	-67.84	-64.12	-66.08	-75.62	11.1
vvN(dB)	-68.58	-64.99	-66.67	-76.64	10.1
hhL(dB)	-14.36	-10.52	-11.79	-21.33	11.1
vvL(dB)	-22.61	-13.29	-17.10	-22.30	30.2
ppN(m/s)	-12.01	12.70	-0.00	4.13	
ppT(m/s)	-94.87	100.31	-0.04	32.64	
hh/vv(dB)	-NaN	49.69	16.65	36.17	8964
vh/hh(dB)	-41.73	-31.36	-34.65	-36.67	62.9
hv/vv(dB)	-NaN	-33.54	-54.16	-45.96	660.
hnjmp(dB)	-1.98	2.31	0.19	-8.32	14.1
vnjmp(dB)	-2.55	2.41	0.18	-8.35	14.0