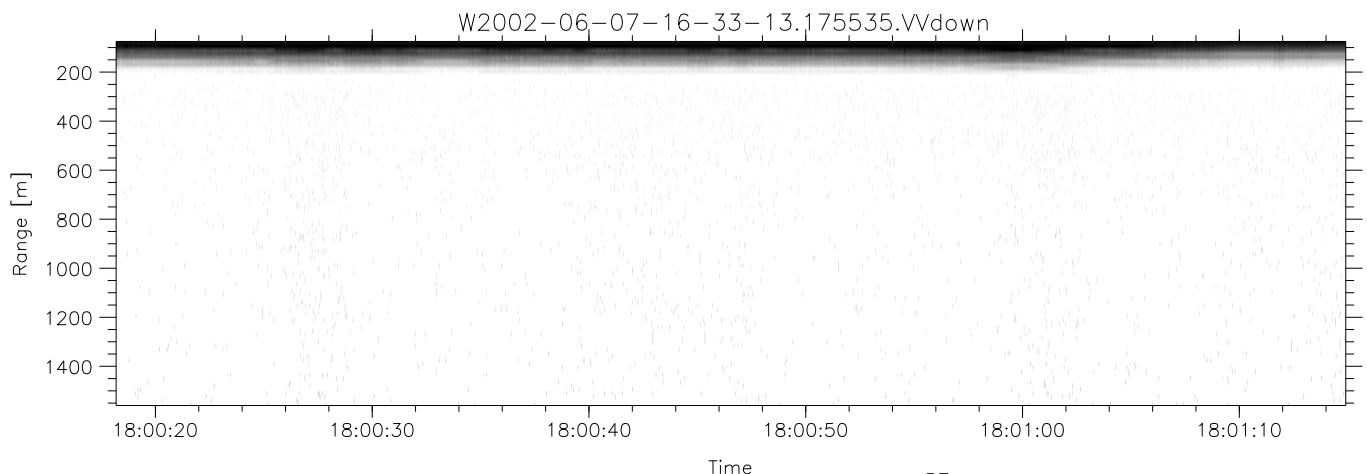
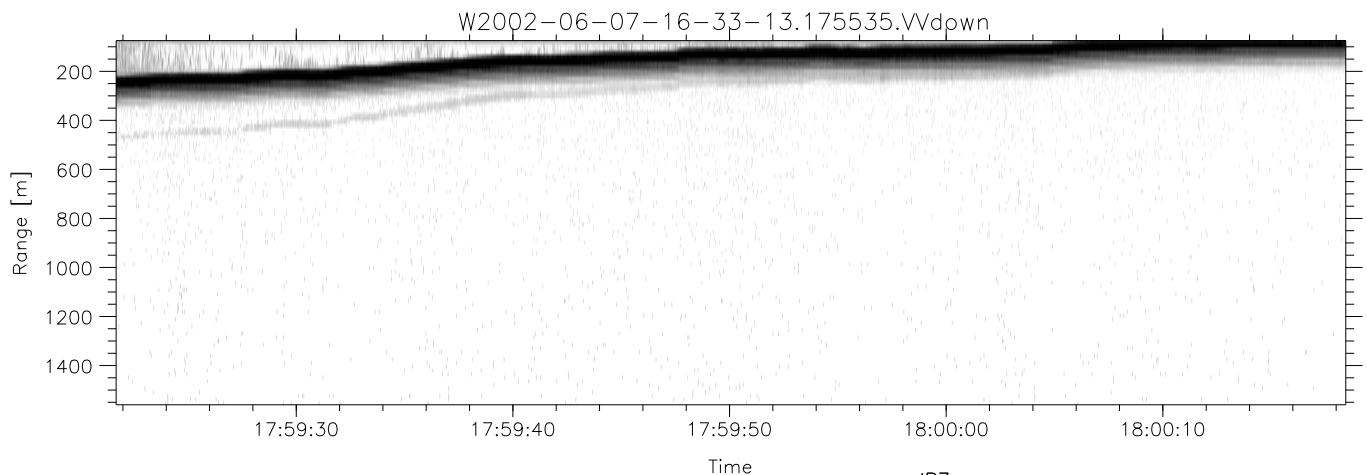
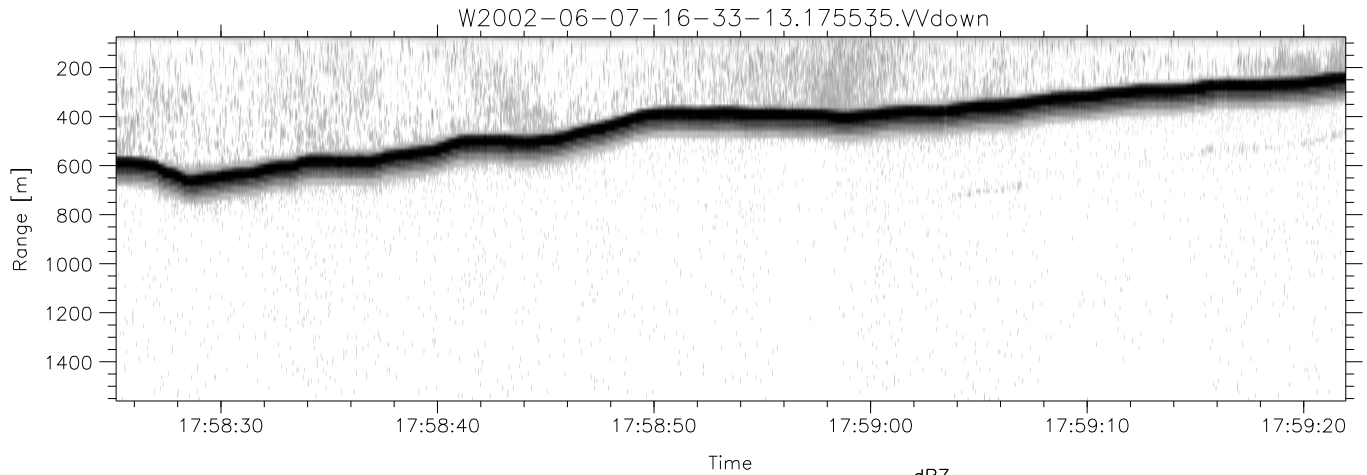


IHOP 2002 (dual-antenna config, modes 1,3,4,7) Data (cal: 49.0,50.0)

W2002-06-07-16-33-13 - PPMAG4
 IRIG:0,Time: 16:33:12.64 to 18:41:58.06, Dur: 7726s
 TimeLngth: 7725.42s, TimeInt: 29ms (34.4pps)
 TimeCor=0.0s, DSPDif(mn,min,mx):29,28,314
 PPS(min,max,std): 24,36,2.33
 Prof: 536 to 266091, NumProf(t/r): 265555/17069
 ProcTime/Recs: 17:55:35-18:03:56/170690-187758
 MxAcQtime: 33ms; DRate: 192.4KB/s; Flags: 0, 0, 0
 Pulse: 275ns, IFilt: 5.0MHz; ppPol: HH HV VV
 TxPol: HHVV, PRF: 20 10 20 10 kHz
 Range: Delay 75m, Spacing 15m, Gates 100
 Ave. Pulses: 84, Rng/Prof Aspect@90m/s: 5.7

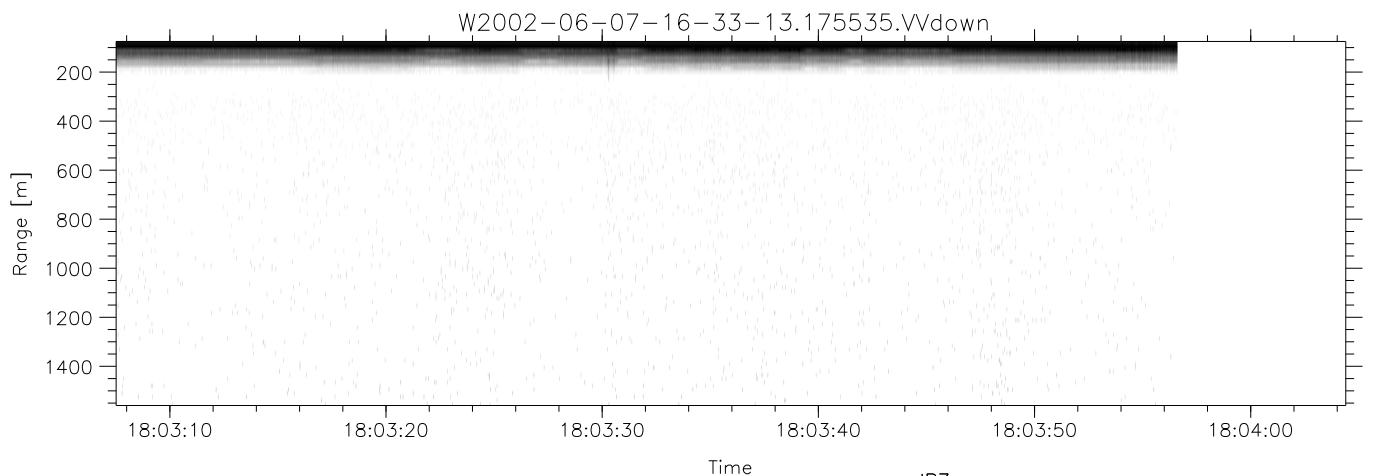
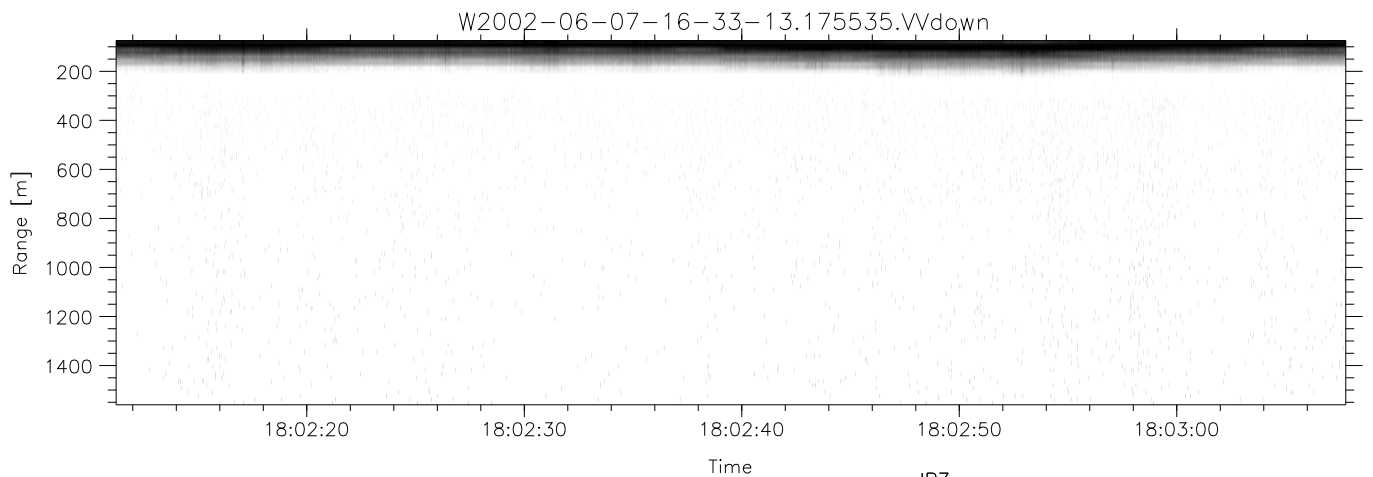
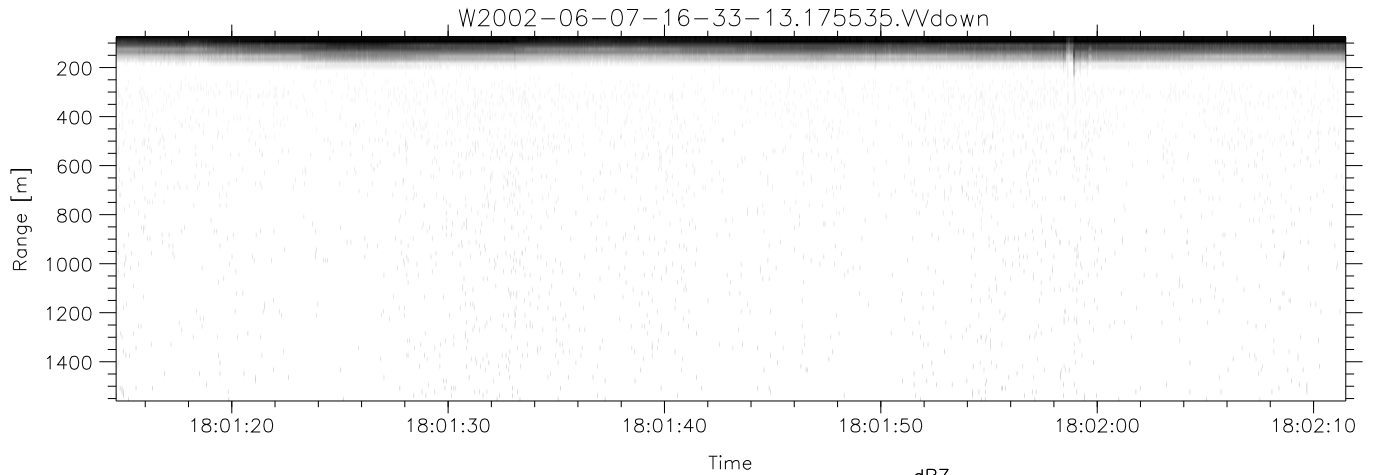
	Min	Max	Mean	Std	Varc%
hhN (dB)	-68.04	-64.24	-66.02	-75.52	11.2
vvN (dB)	-68.56	-65.22	-66.78	-76.75	10.1
hhL (dB)	-16.51	-10.54	-12.75	-19.13	23.0
vvL (dB)	-21.29	-12.58	-15.51	-20.61	30.9
ppN (m/s)	-12.47	12.70	0.01	4.17	
ppT (m/s)	-98.48	100.31	0.10	32.93	
hh/vv (dB)	-NaN	51.54	18.48	32.40	2465
vh/hh (dB)	-NaN	-6.54	-17.45	-12.91	285.
hv/vv (dB)	-NaN	-17.46	-40.40	-34.54	385.
hnjmp (dB)	-2.64	2.17	-0.08	-8.60	14.1
vnjmp (dB)	-2.39	1.84	-0.09	-8.59	14.2



IHOP 2002 (dual-antenna config, modes 1,3,4,7) Data (cal: 49.0,50.0)

W2002-06-07-16-33-13 - PPMAG4
 IRIG:0,Time: 16:33:12.64 to 18:41:58.06, Dur: 7726s
 TimeLngth: 7725.42s, TimeInt: 29ms (34.4pps)
 TimeCor=0.0s, DSPDif(mn,min,mx):29,28,314
 PPS(min,max,std): 24,36,2.33
 Prof: 536 to 266091, NumProf(t/r): 265555/17069
 ProcTime/Recs: 17:55:35-18:03:56/170690-187758
 MxAcQtime: 33ms; DRate: 192.4KB/s; Flags: 0, 0, 0
 Pulse: 275ns, IFilt: 5.0MHz; ppPol: HH HV VV
 TxPol: HHVV, PRF: 20 10 20 10 kHz
 Range: Delay 75m, Spacing 15m, Gates 100
 Ave. Pulses: 84, Rng/Prof Aspect@90m/s: 5.7

	Min	Max	Mean	Std	Varc%
hhN(dB)	-68.04	-64.24	-66.02	-75.52	11.2
vvN(dB)	-68.56	-65.22	-66.78	-76.75	10.1
hhL(dB)	-16.51	-10.54	-12.75	-19.13	23.0
vvL(dB)	-21.29	-12.58	-15.51	-20.61	30.9
ppN(m/s)	-12.47	12.70	0.01	4.17	
ppT(m/s)	-98.48	100.31	0.10	32.93	
hh/vv(dB)	-NaN	51.54	18.48	32.40	2465
vh/hh(dB)	-NaN	-6.54	-17.45	-12.91	285.
hv/vv(dB)	-NaN	-17.46	-40.40	-34.54	385.
hnjmp(dB)	-2.64	2.17	-0.08	-8.60	14.1
vnjmp(dB)	-2.39	1.84	-0.09	-8.59	14.2



IHOP 2002 (dual-antenna config, modes 1,3,4,7) Data (cal: 49.0,50.0)

W2002-06-07-16-33-13 - PPMAG4	Min	Max	Mean	Std	Varc%
IRIG:0,Time: 16:33:12.64 to 18:41:58.06, Dur: 7726s	-68.04	-64.24	-66.02	-75.52	11.2
TimeLngth: 7725.42s, TimeInt: 29ms (34.4pps)	-68.56	-65.22	-66.78	-76.75	10.1
TimeCor=0.0s, DSPDif(mn,min,mx):29,28,314	-16.51	-10.54	-12.75	-19.13	23.0
PPS(min,max,std): 24,36,2.33	-21.29	-12.58	-15.51	-20.61	30.9
Prof: 536 to 266091, NumProf(t/r): 265555/17069	ppN(m/s)	-12.47	12.70	0.01	4.17
ProcTime/Recs: 17:55:35-18:03:56/170690-187758	ppT(m/s)	-98.48	100.31	0.10	32.93
MxAcQtime: 33ms; DRate: 192.4KB/s; Flags: 0, 0, 0	hh/vv(dB)	-NaN	51.54	18.48	32.40 2465
Pulse: 275ns, IFilt: 5.0MHz; ppPol: HH HV VV	vh/hh(dB)	-NaN	-6.54	-17.45	-12.91 285.
TxPol: HHVV, PRF: 20 10 20 10 kHz	hv/vv(dB)	-NaN	-17.46	-40.40	-34.54 385.
Range: Delay 75m, Spacing 15m, Gates 100	hnjmp(dB)	-2.64	2.17	-0.08	-8.60 14.1
Ave. Pulses: 84, Rng/Prof Aspect@90m/s: 5.7	vnjmp(dB)	-2.39	1.84	-0.09	-8.59 14.2