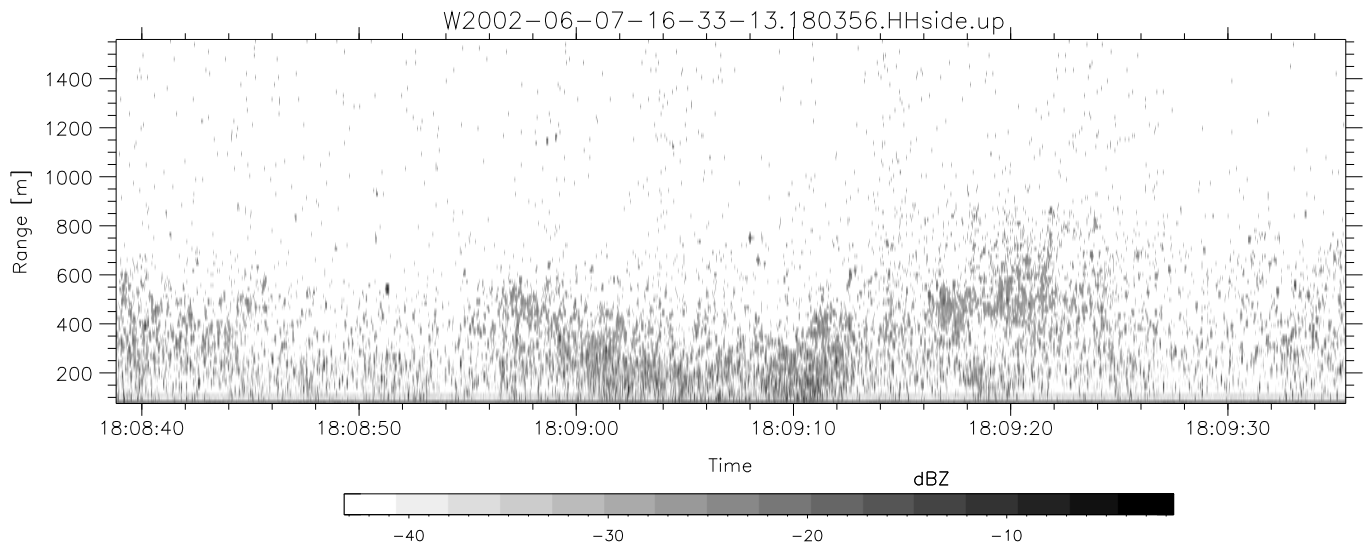
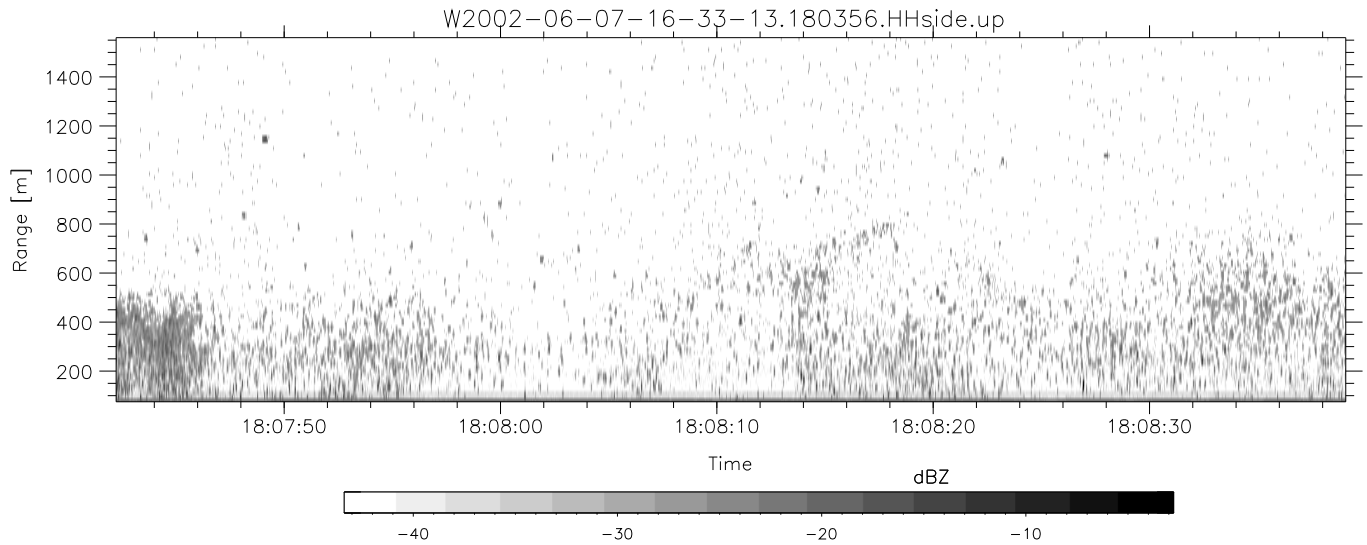
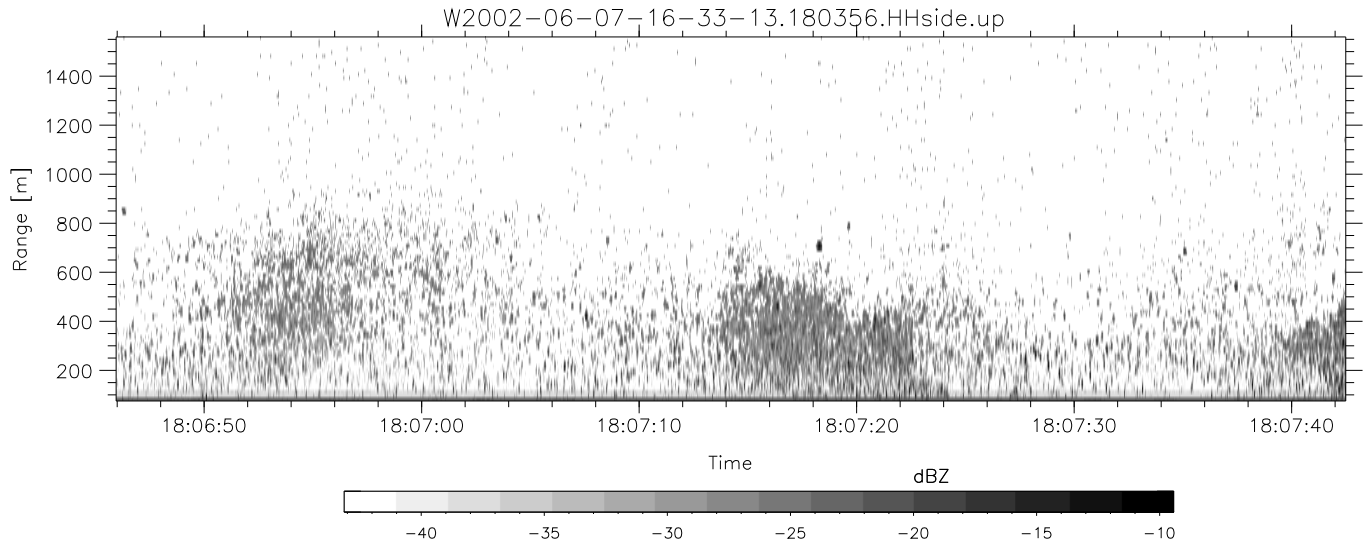


IHOP 2002 (dual-antenna config, modes 1,3,4,7) Data (cal: 49.0,50.0)

W2002-06-07-16-33-13 - PPMAG4  
 IRIG:0,Time: 16:33:12.64 to 18:41:58.06, Dur: 7726s  
 TimeLngth: 7725.42s, TimeInt: 29ms (34.4pps)  
 TimeCor=0.0s, DSPDif(mn,min,mx):29,28,328  
 PPS(min,max,std): 23,36,2.33  
 Prof: 536 to 266091, NumProf(t/r): 265555/17069  
 ProcTime/Recs: 18:03:56-18:12:17/187759-204827  
 MxACQtime: 33ms; DRate: 192.4KB/s; Flags: 0, 0, 0  
 Pulse: 275ns, IFfilt: 5.0MHz; ppPol: HH HV VV  
 TxPol: HHVV, PRF: 20 10 20 10 kHz  
 Range: Delay 75m, Spacing 15m, Gates 100  
 Ave. Pulses: 84, Rng/Prof Aspect@90m/s: 5.7

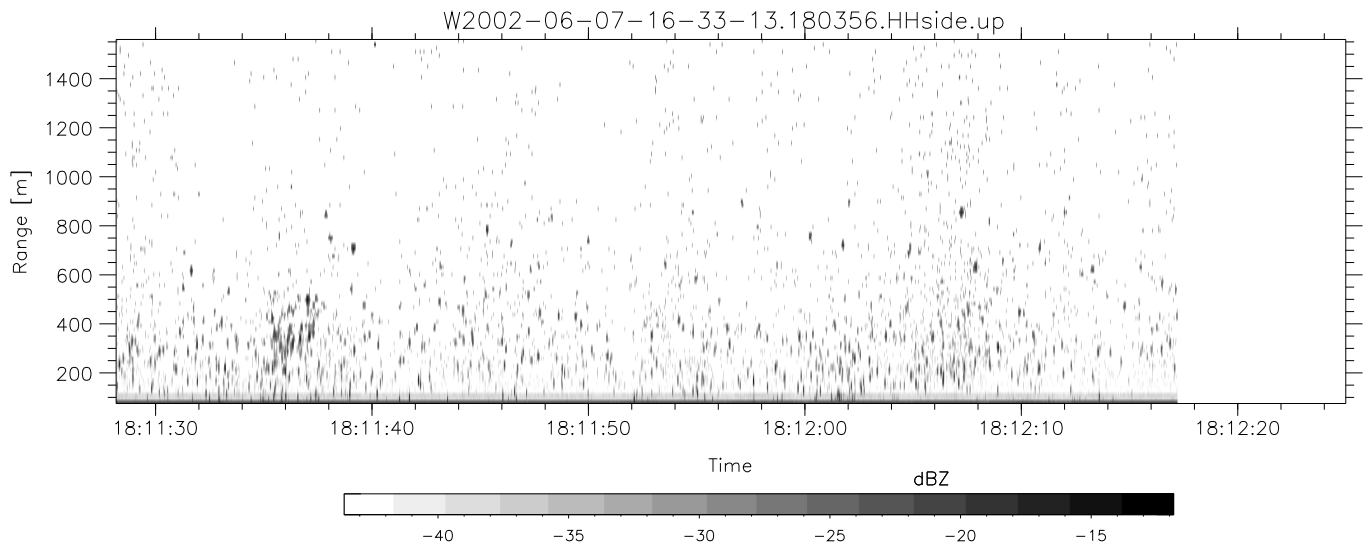
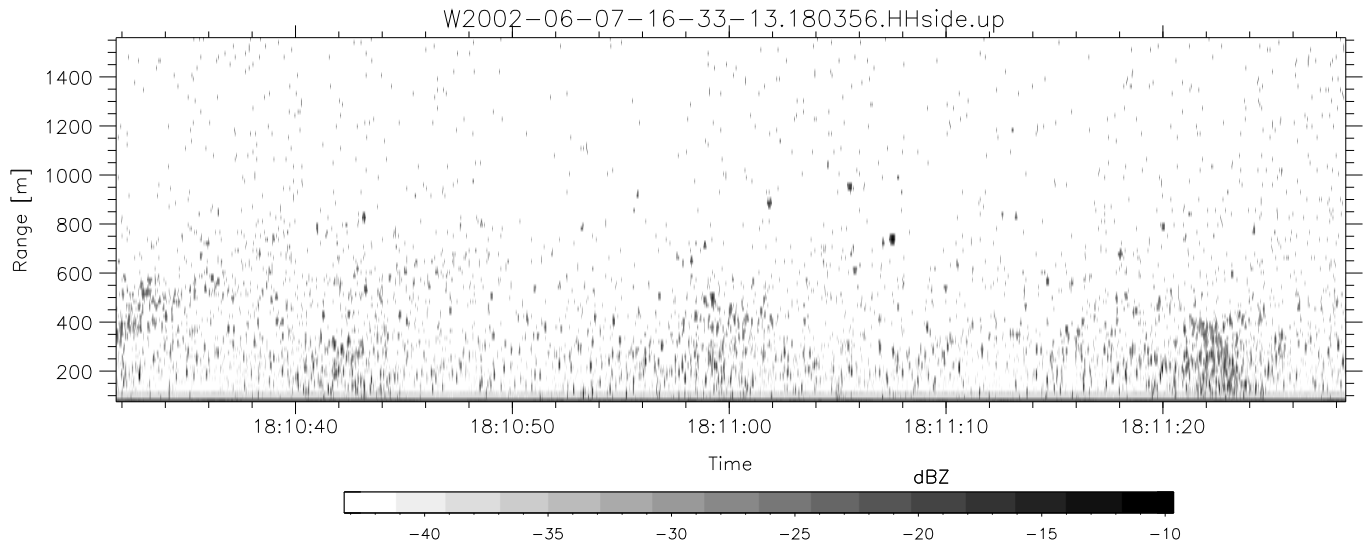
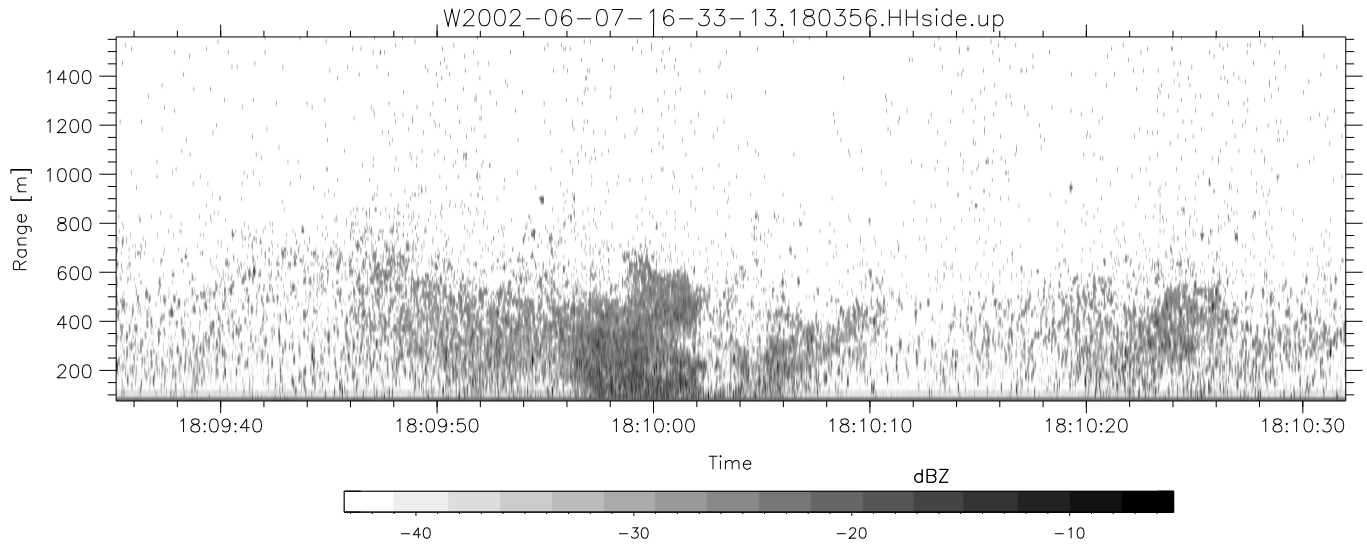
	Min	Max	Mean	Std	Varc%
hhN(dB)	-68.13	-64.87	-66.38	-76.39	10.0
vvN(dB)	-68.67	-65.36	-66.90	-76.88	10.1
hhL(dB)	-17.12	-12.16	-13.98	-22.04	15.6
vvL(dB)	-20.98	-13.01	-15.20	-21.92	21.3
ppN(m/s)	-12.39	12.40	-0.01	4.16	
ppT(m/s)	-97.89	97.95	-0.08	32.84	
hh/vv(dB)	-NaN	62.01	22.29	41.50	8330
vh/hh(dB)	-43.87	-11.72	-22.79	-18.61	261.
hv/vv(dB)	-NaN	-15.35	-32.53	-28.94	228.
hnjmp(dB)	-2.19	2.24	0.17	-8.38	14.0
vnjmp(dB)	-2.50	2.56	0.16	-8.32	14.2



IHOP 2002 (dual-antenna config, modes 1,3,4,7) Data (cal: 49.0,50.0)

W2002-06-07-16-33-13 - PPMAG4  
 IRIG:0,Time: 16:33:12.64 to 18:41:58.06, Dur: 7726s  
 TimeLngth: 7725.42s, TimeInt: 29ms (34.4pps)  
 TimeCor=0.0s, DSPDif(mn,min,mx):29,28,328  
 PPS(min,max,std): 23,36,2.33  
 Prof: 536 to 266091, NumProf(t/r): 265555/17069  
 ProcTime/Recs: 18:03:56-18:12:17/187759-204827  
 MxACQtime: 33ms; DRate: 192.4KB/s; Flags: 0, 0, 0  
 Pulse: 275ns, IFfilt: 5.0MHz; ppPol: HH HV VV  
 TxPol: HHVV, PRF: 20 10 20 10 kHz  
 Range: Delay 75m, Spacing 15m, Gates 100  
 Ave. Pulses: 84, Rng/Prof Aspect@90m/s: 5.7

	Min	Max	Mean	Std	Varc%
hhN (dB)	-68.13	-64.87	-66.38	-76.39	10.0
vvN (dB)	-68.67	-65.36	-66.90	-76.88	10.1
hhL (dB)	-17.12	-12.16	-13.98	-22.04	15.6
vvL (dB)	-20.98	-13.01	-15.20	-21.92	21.3
ppN (m/s)	-12.39	12.40	-0.01	4.16	
ppT (m/s)	-97.89	97.95	-0.08	32.84	
hh/vv (dB)	-NaN	62.01	22.29	41.50	8330
vh/hh (dB)	-43.87	-11.72	-22.79	-18.61	261.
hv/vv (dB)	-NaN	-15.35	-32.53	-28.94	228.
hnjmp (dB)	-2.19	2.24	0.17	-8.38	14.0
vnjmp (dB)	-2.50	2.56	0.16	-8.32	14.2



IHOP 2002 (dual-antenna config, modes 1,3,4,7) Data (cal: 49.0,50.0)

W2002-06-07-16-33-13 - PPMAG4	Min	Max	Mean	Std	Varc%	
IRIG:0,Time: 16:33:12.64 to 18:41:58.06, Dur: 7726s	hhN (dB)	-68.13	-64.87	-66.38	-76.39	10.0
TimeLngth: 7725.42s, TimeInt: 29ms (34.4pps)	vvN (dB)	-68.67	-65.36	-66.90	-76.88	10.1
TimeCor=0.0s, DSPDif(mn,min,mx):29,28,328	hhL (dB)	-17.12	-12.16	-13.98	-22.04	15.6
PPS(min,max,std): 23,36,2.33	vvL (dB)	-20.98	-13.01	-15.20	-21.92	21.3
Prof: 536 to 266091, NumProf(t/r): 265555/17069	ppN(m/s)	-12.39	12.40	-0.01	4.16	
ProcTime/Recs: 18:03:56-18:12:17/187759-204827	ppT(m/s)	-97.89	97.95	-0.08	32.84	
MxACQtime: 33ms; DRate: 192.4KB/s; Flags: 0, 0, 0	hh/vv (dB)	-NaN	62.01	22.29	41.50	8330
Pulse: 275ns, IFilt: 5.0MHz; ppPol: HH HV VV	vh/hh (dB)	-43.87	-11.72	-22.79	-18.61	261.
TxPol: HHVV, PRF: 20 10 20 10 kHz	hv/vv (dB)	-NaN	-15.35	-32.53	-28.94	228.
Range: Delay 75m, Spacing 15m, Gates 100	hn/jmp (dB)	-2.19	2.24	0.17	-8.38	14.0
Ave. Pulses: 84, Rng/Prof Aspect@90m/s: 5.7	vn/jmp (dB)	-2.50	2.56	0.16	-8.32	14.2