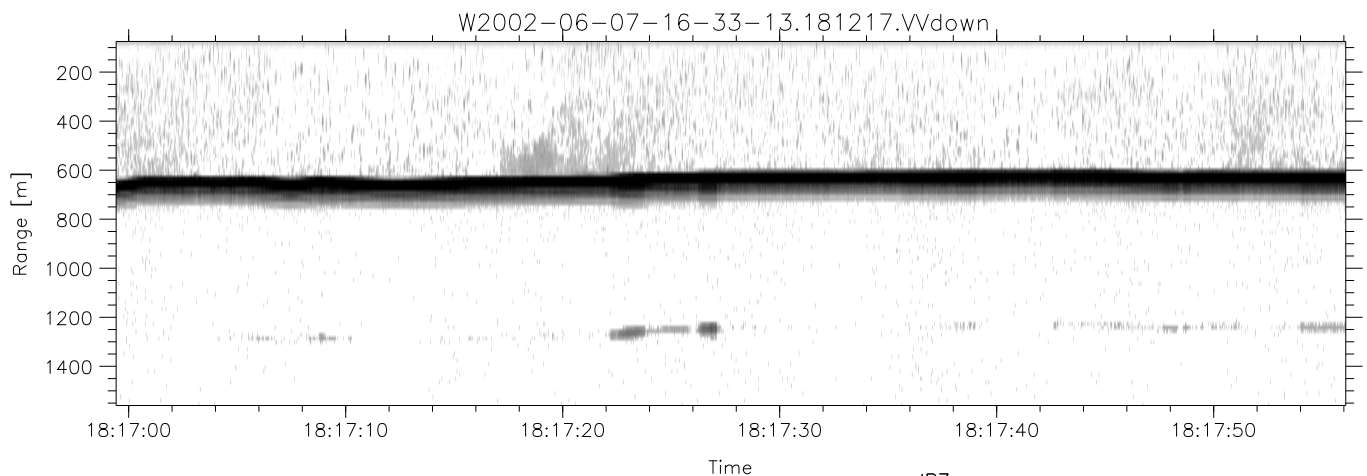
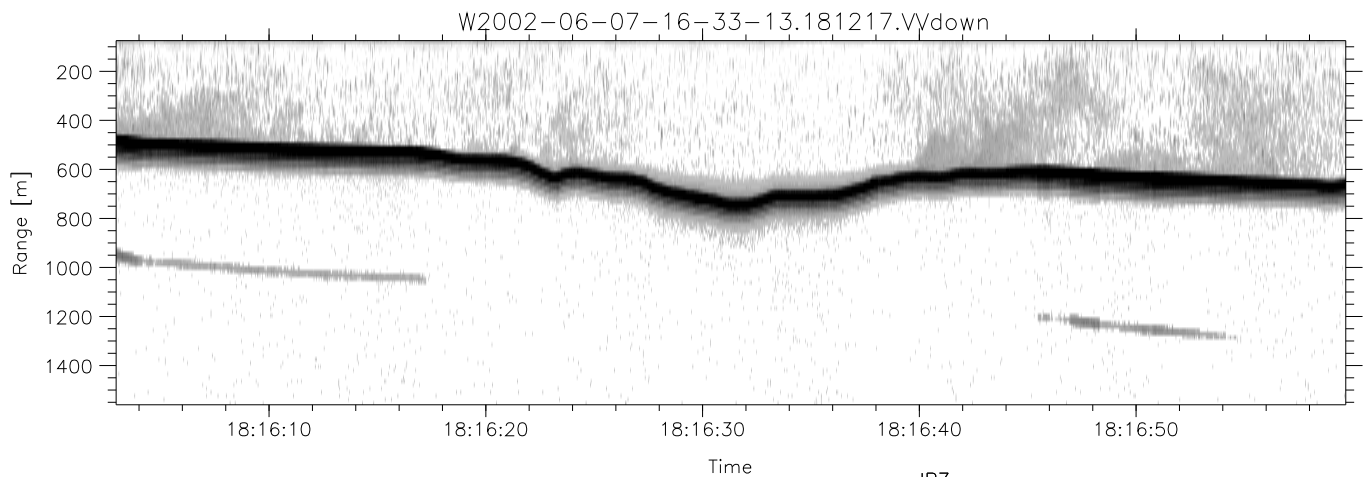
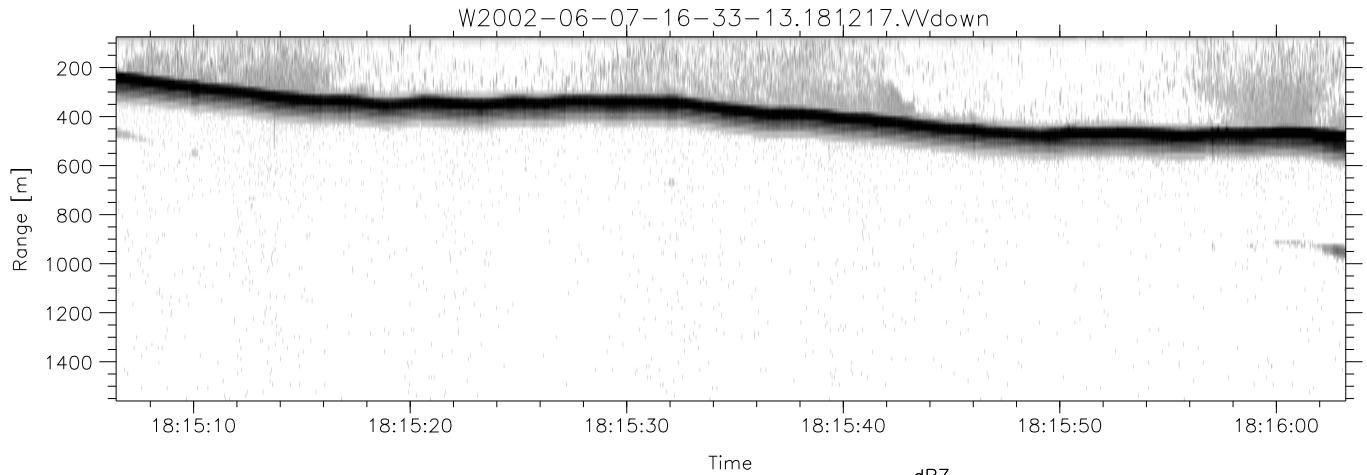


IHOP 2002 (dual-antenna config, modes 1,3,4,7) Data (cal: 49.0,50.0)

W2002-06-07-16-33-13 - PPMAG4
 IRIG:0,Time: 16:33:12.64 to 18:41:58.06, Dur: 7726s
 TimeLngth: 7725.42s, TimeInt: 29ms (34.4pps)
 TimeCor=0.0s, DSPDif(mn,min,mx):29,28,383
 PPS(min,max,std): 23,36,2.28
 Prof: 536 to 266091, NumProf(t/r): 265555/17069
 ProcTime/Recs: 18:12:17-18:20:37/204828-221896
 MxACQtime: 33ms; DRate: 192.4KB/s; Flags: 0, 0, 0
 Pulse: 275ns, IFilt: 5.0MHz; ppPol: HH HV VV
 TxPol: HHVV, PRF: 20 10 20 10 kHz
 Range: Delay 75m, Spacing 15m, Gates 100
 Ave. Pulses: 84, Rng/Prof Aspect@90m/s: 5.7

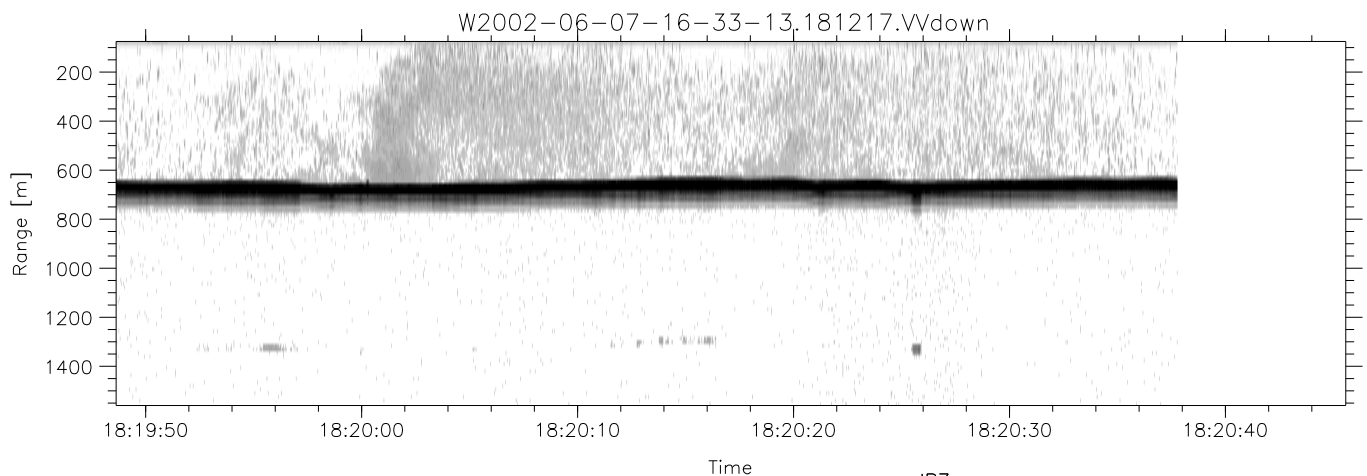
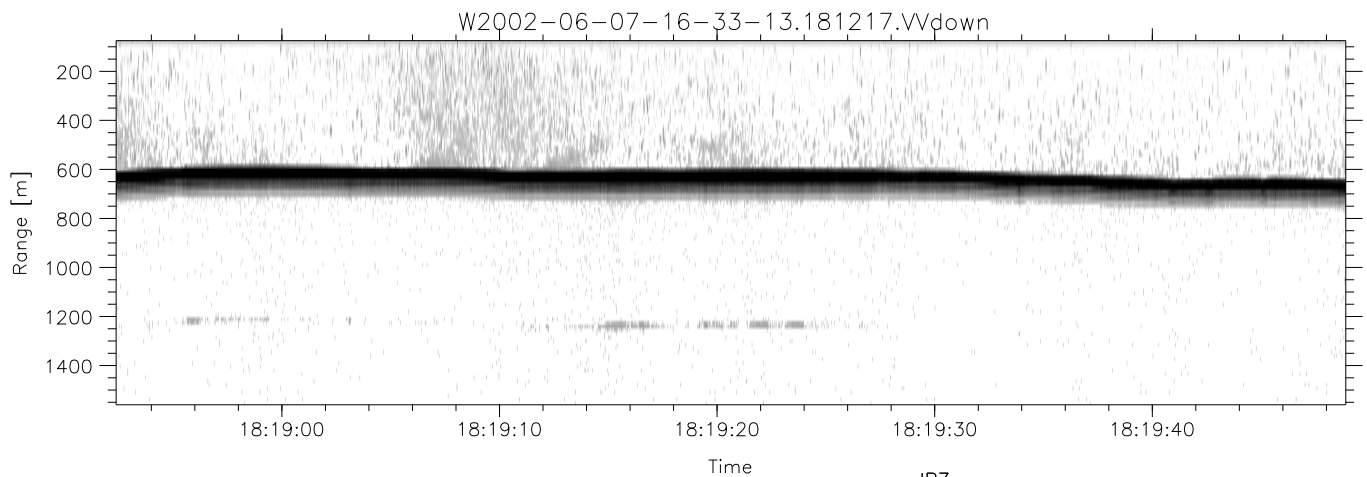
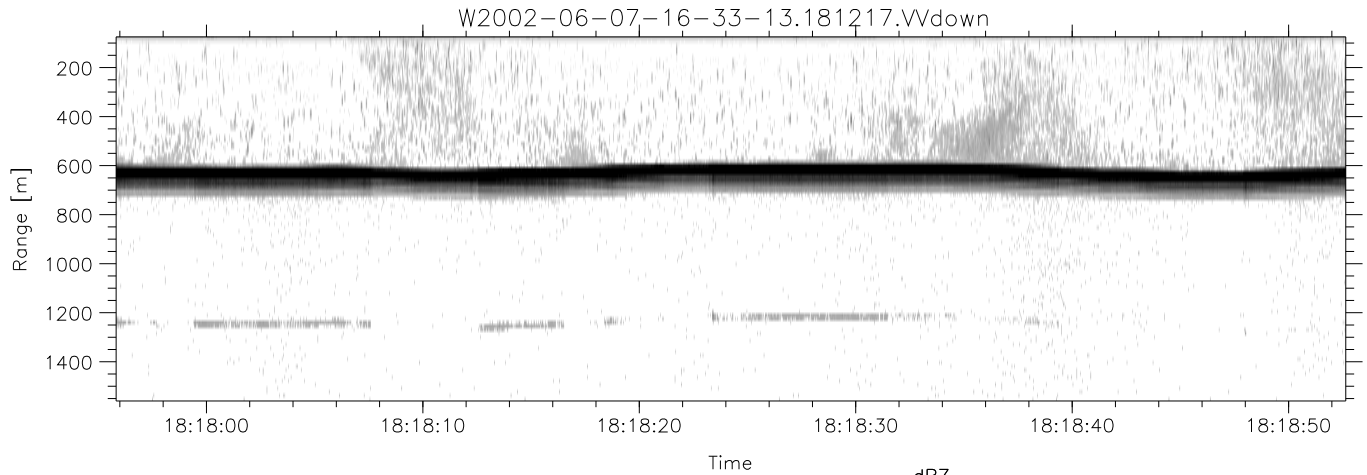
	Min	Max	Mean	Std	Varc%
hhN(dB)	-68.17	-64.82	-66.37	-76.24	10.3
vvN(dB)	-68.90	-65.28	-66.95	-76.90	10.1
hhL(dB)	-17.44	-11.50	-13.34	-20.59	18.8
vvL(dB)	-25.19	-13.02	-16.48	-20.57	39.0
ppN(m/s)	-11.97	12.90	-0.04	4.18	
ppT(m/s)	-94.60	101.87	-0.33	33.02	
hh/vv(dB)	-NaN	47.03	-NaN	37.41	-338
vh/hh(dB)	-NaN	-22.29	-29.58	-27.82	150.
hv/vv(dB)	-NaN	-10.61	-38.50	-31.74	473.
hnjmp(dB)	-2.31	2.03	-0.08	-8.60	14.1
vnjmp(dB)	-2.84	2.38	-0.10	-8.51	14.4



IHOP 2002 (dual-antenna config, modes 1,3,4,7) Data (cal: 49.0,50.0)

W2002-06-07-16-33-13 - PPMAG4
 IRIG:0,Time: 16:33:12.64 to 18:41:58.06, Dur: 7726s
 TimeLngth: 7725.42s, TimeInt: 29ms (34.4pps)
 TimeCor=0.0s, DSPDif(mn,min,mx):29,28,383
 PPS(min,max,std): 23,36,2.28
 Prof: 536 to 266091, NumProf(t/r): 265555/17069
 ProcTime/Recs: 18:12:17-18:20:37/204828-221896
 MxACQtime: 33ms; DRate: 192.4KB/s; Flags: 0, 0, 0
 Pulse: 275ns, IFfilt: 5.0MHz; ppPol: HH HV VV
 TxPol: HHVV, PRF: 20 10 20 10 kHz
 Range: Delay 75m, Spacing 15m, Gates 100
 Ave. Pulses: 84, Rng/Prof Aspect@90m/s: 5.7

	Min	Max	Mean	Std	Varc%
hhN(dB)	-68.17	-64.82	-66.37	-76.24	10.3
vvN(dB)	-68.90	-65.28	-66.95	-76.90	10.1
hhL(dB)	-17.44	-11.50	-13.34	-20.59	18.8
vvL(dB)	-25.19	-13.02	-16.48	-20.57	39.0
ppN(m/s)	-11.97	12.90	-0.04	4.18	
ppT(m/s)	-94.60	101.87	-0.33	33.02	
hh/vv(dB)	-NaN	47.03	-NaN	37.41	-338
vh/hh(dB)	-NaN	-22.29	-29.58	-27.82	150.
hv/vv(dB)	-NaN	-10.61	-38.50	-31.74	473.
hnjmp(dB)	-2.31	2.03	-0.08	-8.60	14.1
vnjmp(dB)	-2.84	2.38	-0.10	-8.51	14.4



IHOP 2002 (dual-antenna config, modes 1,3,4,7) Data (cal: 49.0,50.0)

W2002-06-07-16-33-13 - PPMAG4
 IRIG:0,Time: 16:33:12.64 to 18:41:58.06, Dur: 7726s
 TimeLngth: 7725.42s, TimeInt: 29ms (34.4pps)
 TimeCor=0.0s, DSPDif(mn,min,mx):29,28,383
 PPS(min,max,std): 23,36,2.28
 Prof: 536 to 266091, NumProf(t/r): 265555/17069
 ProcTime/Recs: 18:12:17-18:20:37/204828-221896
 MxACQtime: 33ms; DRate: 192.4KB/s; Flags: 0, 0, 0
 Pulse: 275ns, IFfilt: 5.0MHz; ppPol: HH HV VV
 TxPol: HHVV, PRF: 20 10 20 10 kHz
 Range: Delay 75m, Spacing 15m, Gates 100
 Ave. Pulses: 84, Rng/Prof Aspect@90m/s: 5.7

	Min	Max	Mean	Std	Varc%
hhN (dB)	-68.17	-64.82	-66.37	-76.24	10.3
vvN (dB)	-68.90	-65.28	-66.95	-76.90	10.1
hhL (dB)	-17.44	-11.50	-13.34	-20.59	18.8
vvL (dB)	-25.19	-13.02	-16.48	-20.57	39.0
ppN (m/s)	-11.97	12.90	-0.04	4.18	
ppT (m/s)	-94.60	101.87	-0.33	33.02	
hh/vv (dB)	-NaN	47.03	-NaN	37.41	-338
vh/hh (dB)	-NaN	-22.29	-29.58	-27.82	150.
hv/vv (dB)	-NaN	-10.61	-38.50	-31.74	473.
hnjmp (dB)	-2.31	2.03	-0.08	-8.60	14.1
vnjmp (dB)	-2.84	2.38	-0.10	-8.51	14.4