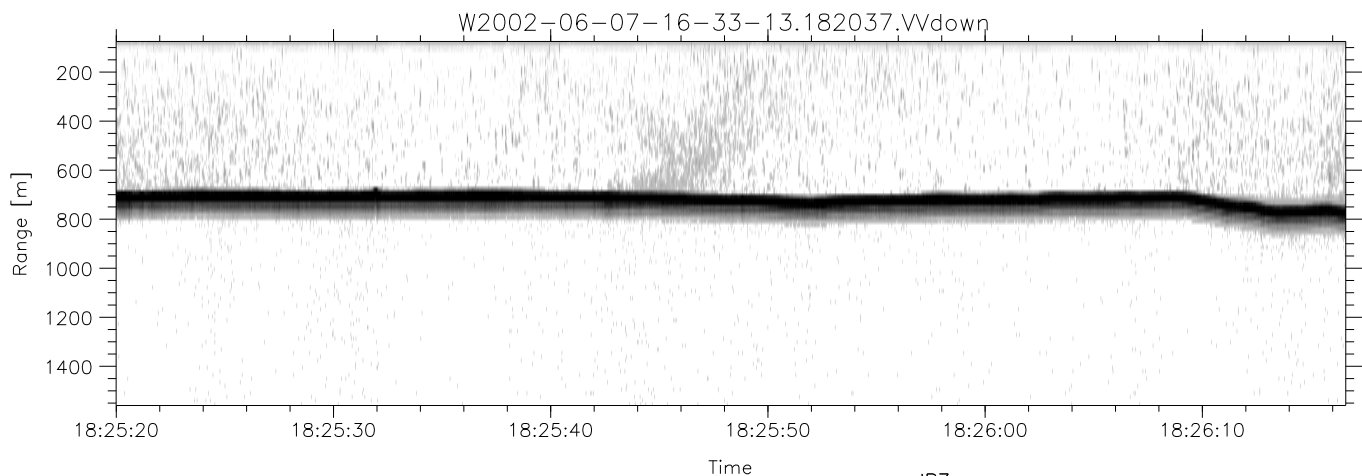
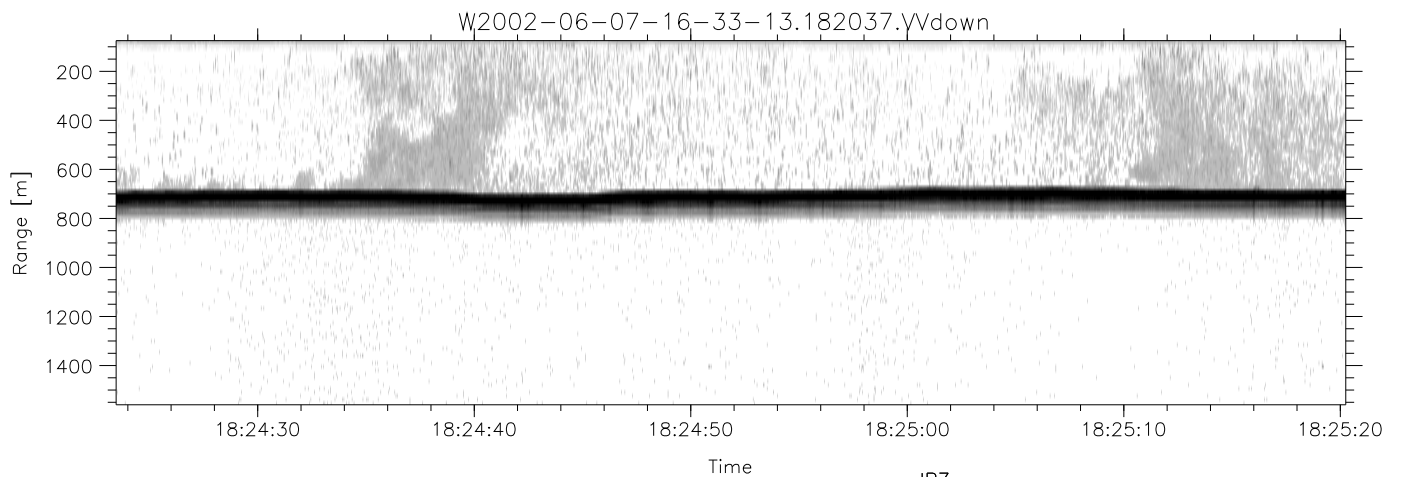
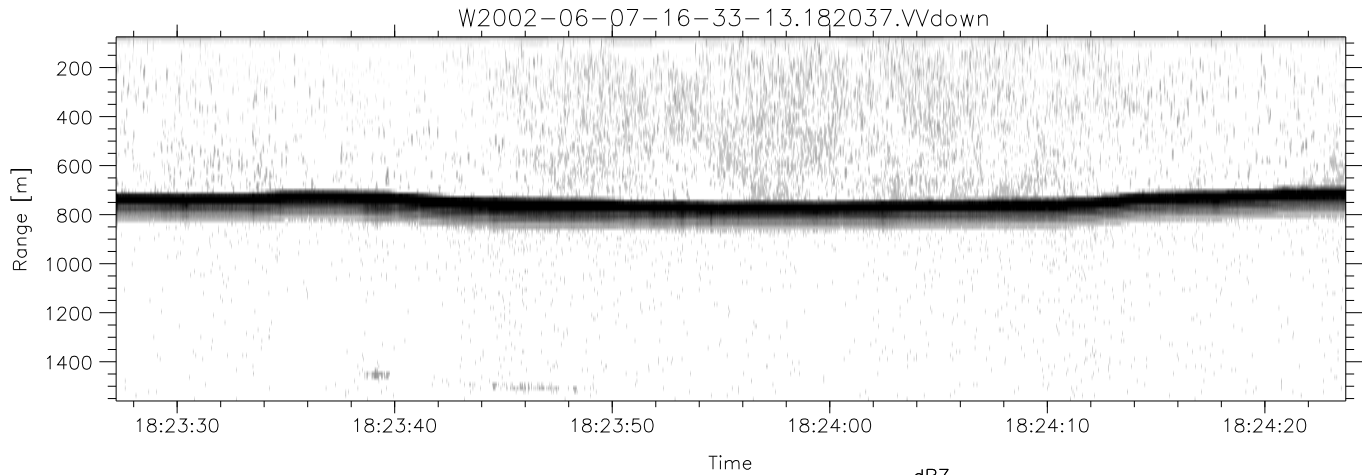


IHOP 2002 (dual-antenna config, modes 1,3,4,7) Data (cal: 49.0,50.0)

W2002-06-07-16-33-13 - PPMAG4  
 IRIG:0,Time: 16:33:12.64 to 18:41:58.06, Dur: 7726s  
 TimeLngth: 7725.42s, TimeInt: 29ms (34.4pps)  
 TimeCor=0.0s, DSPDif(mn,min,mx):29,28,379  
 PPS(min,max,std): 23,36,2.37  
 Prof: 536 to 266091, NumProf(t/r): 265555/17069  
 ProcTime/Recs: 18:20:37-18:28:58/221897-238965  
 MxACQtime: 33ms; DRate: 192.4KB/s; Flags: 0, 0, 0  
 Pulse: 275ns, IFfilt: 5.0MHz; ppPol: HH HV VV  
 TxPol: HHVV, PRF: 20 10 20 10 kHz  
 Range: Delay 75m, Spacing 15m, Gates 100  
 Ave. Pulses: 84, Rng/Prof Aspect@90m/s: 5.7

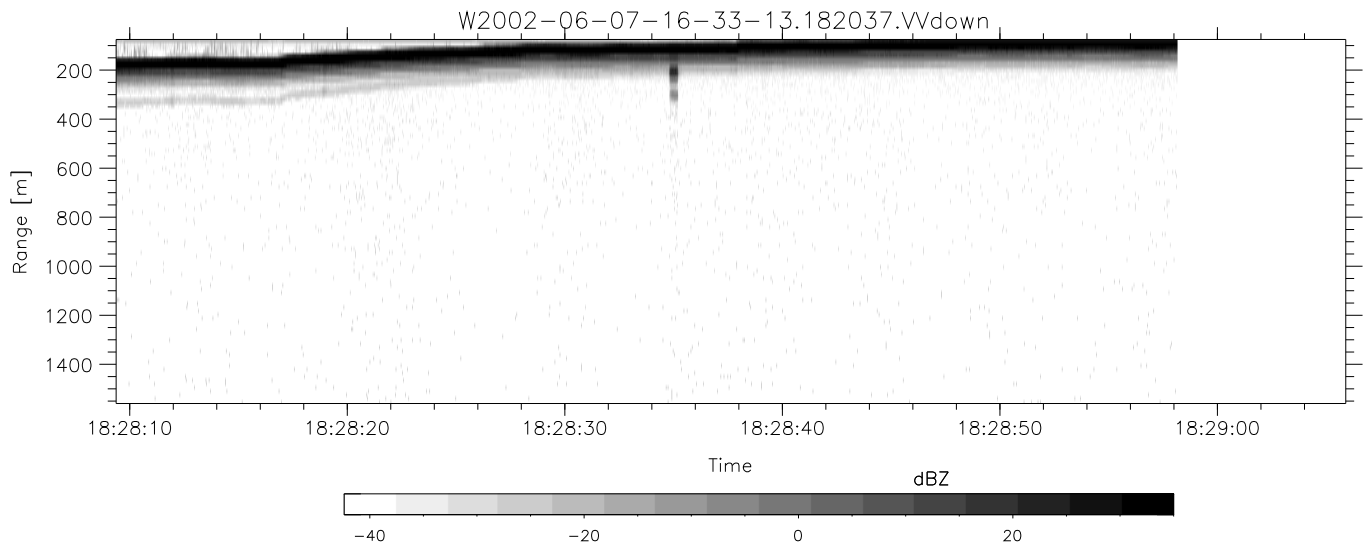
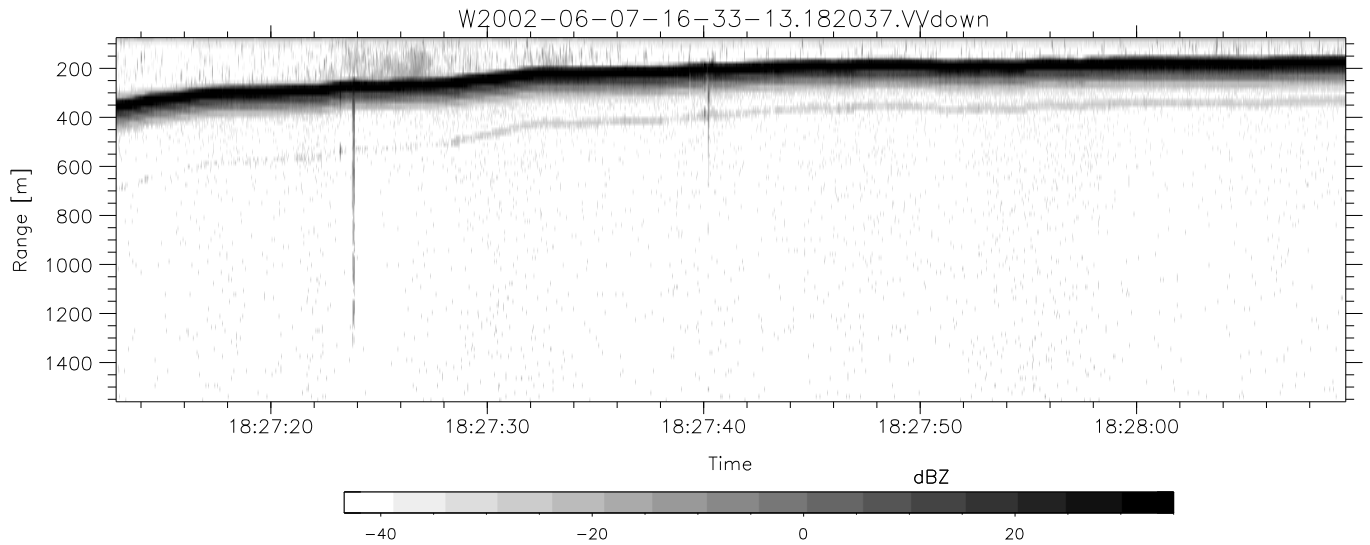
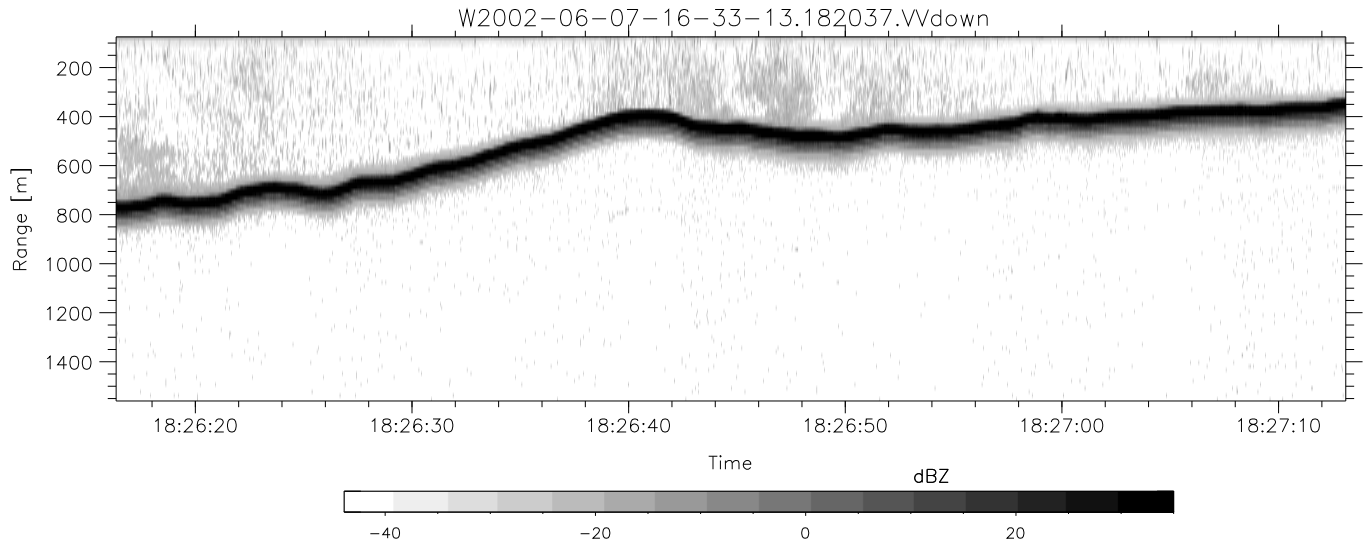
	Min	Max	Mean	Std	Varc%
hhN(dB)	-68.28	-64.86	-66.47	-76.28	10.4
vvN(dB)	-68.76	-65.45	-67.02	-76.97	10.1
hhL(dB)	-20.12	-11.75	-13.56	-21.05	17.8
vvL(dB)	-24.11	-12.39	-15.58	-20.06	35.6
ppN(m/s)	-12.99	12.47	-0.02	4.16	
ppT(m/s)	-102.5	98.51	-0.19	32.84	
hh/vv(dB)	-NaN	49.96	20.37	34.29	2463
vh/hh(dB)	-NaN	-17.08	-25.90	-22.20	234.
hv/vv(dB)	-NaN	-23.34	-50.01	-41.60	692.
hnjmp(dB)	-2.15	2.41	0.18	-8.25	14.4
vnjmp(dB)	-2.29	2.58	0.19	-8.26	14.3



IHOP 2002 (dual-antenna config, modes 1,3,4,7) Data (cal: 49.0,50.0)

W2002-06-07-16-33-13 - PPMAG4  
 IRIG:0,Time: 16:33:12.64 to 18:41:58.06, Dur: 7726s  
 TimeLngth: 7725.42s, TimeInt: 29ms (34.4pps)  
 TimeCor=0.0s, DSPDif(mn,min,mx):29,28,379  
 PPS(min,max,std): 23,36,2.37  
 Prof: 536 to 266091, NumProf(t/r): 265555/17069  
 ProcTime/Recs: 18:20:37-18:28:58/221897-238965  
 MxACQtime: 33ms; DRate: 192.4KB/s; Flags: 0, 0, 0  
 Pulse: 275ns, IFfilt: 5.0MHz; ppPol: HH HV VV  
 TxPol: HHVV, PRF: 20 10 20 10 kHz  
 Range: Delay 75m, Spacing 15m, Gates 100  
 Ave. Pulses: 84, Rng/Prof Aspect@90m/s: 5.7

	Min	Max	Mean	Std	Varc%
hhN(dB)	-68.28	-64.86	-66.47	-76.28	10.4
vvN(dB)	-68.76	-65.45	-67.02	-76.97	10.1
hhL(dB)	-20.12	-11.75	-13.56	-21.05	17.8
vvL(dB)	-24.11	-12.39	-15.58	-20.06	35.6
ppN(m/s)	-12.99	12.47	-0.02	4.16	
ppT(m/s)	-102.5	98.51	-0.19	32.84	
hh/vv(dB)	-NaN	49.96	20.37	34.29	2463
vh/hh(dB)	-NaN	-17.08	-25.90	-22.20	234.
hv/vv(dB)	-NaN	-23.34	-50.01	-41.60	692.
hhjmp(dB)	-2.15	2.41	0.18	-8.25	14.4
vvjmp(dB)	-2.29	2.58	0.19	-8.26	14.3



IHOP 2002 (dual-antenna config, modes 1,3,4,7) Data (cal: 49.0,50.0)

W2002-06-07-16-33-13 - PPMAG4  
 IRIG:0,Time: 16:33:12.64 to 18:41:58.06, Dur: 7726s  
 TimeLngth: 7725.42s, TimeInt: 29ms (34.4pps)  
 TimeCor=0.0s, DSPDif(mn,min,mx):29,28,379  
 PPS(min,max,std): 23,36,2.37  
 Prof: 536 to 266091, NumProf(t/r): 265555/17069  
 ProcTime/Recs: 18:20:37-18:28:58/221897-238965  
 MxACQtime: 33ms; DRate: 192.4KB/s; Flags: 0, 0, 0  
 Pulse: 275ns, IFfilt: 5.0MHz; ppPol: HH HV VV  
 TxPol: HHVV, PRF: 20 10 20 10 kHz  
 Range: Delay 75m, Spacing 15m, Gates 100  
 Ave. Pulses: 84, Rng/Prof Aspect@90m/s: 5.7

	Min	Max	Mean	Std	Varc%
hhN(dB)	-68.28	-64.86	-66.47	-76.28	10.4
vvN(dB)	-68.76	-65.45	-67.02	-76.97	10.1
hhL(dB)	-20.12	-11.75	-13.56	-21.05	17.8
vvL(dB)	-24.11	-12.39	-15.58	-20.06	35.6
ppN(m/s)	-12.99	12.47	-0.02	4.16	
ppT(m/s)	-102.5	98.51	-0.19	32.84	
hh/vv(dB)	-NaN	49.96	20.37	34.29	2463
vh/hh(dB)	-NaN	-17.08	-25.90	-22.20	234.
hv/vv(dB)	-NaN	-23.34	-50.01	-41.60	692.
hnjmp(dB)	-2.15	2.41	0.18	-8.25	14.4
vnjmp(dB)	-2.29	2.58	0.19	-8.26	14.3