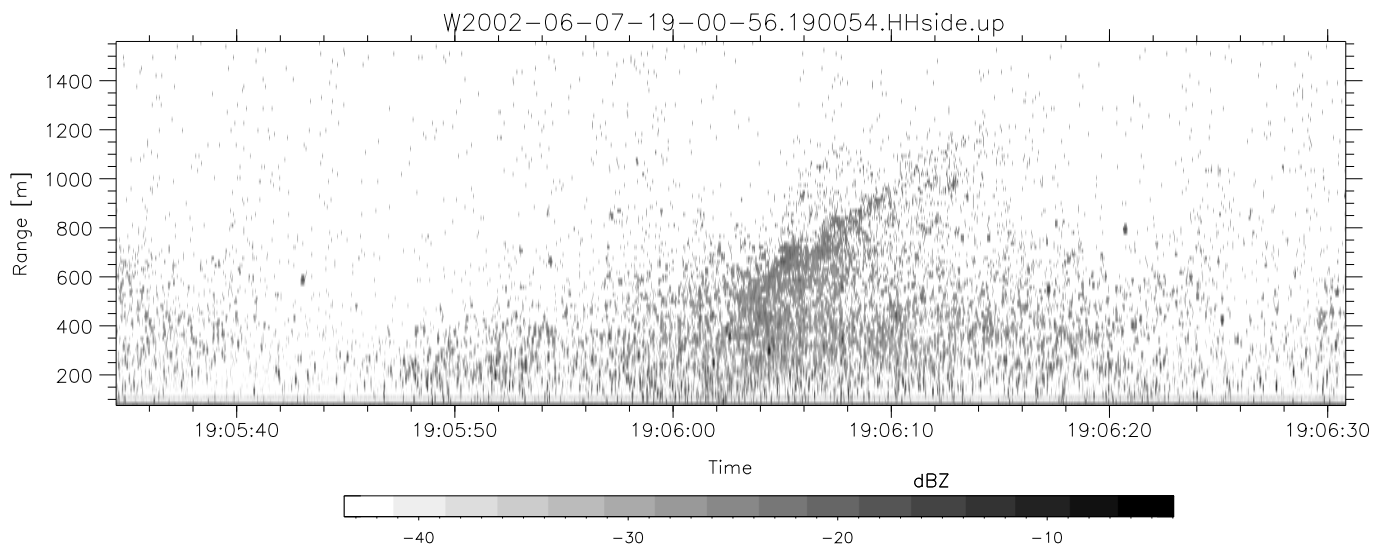
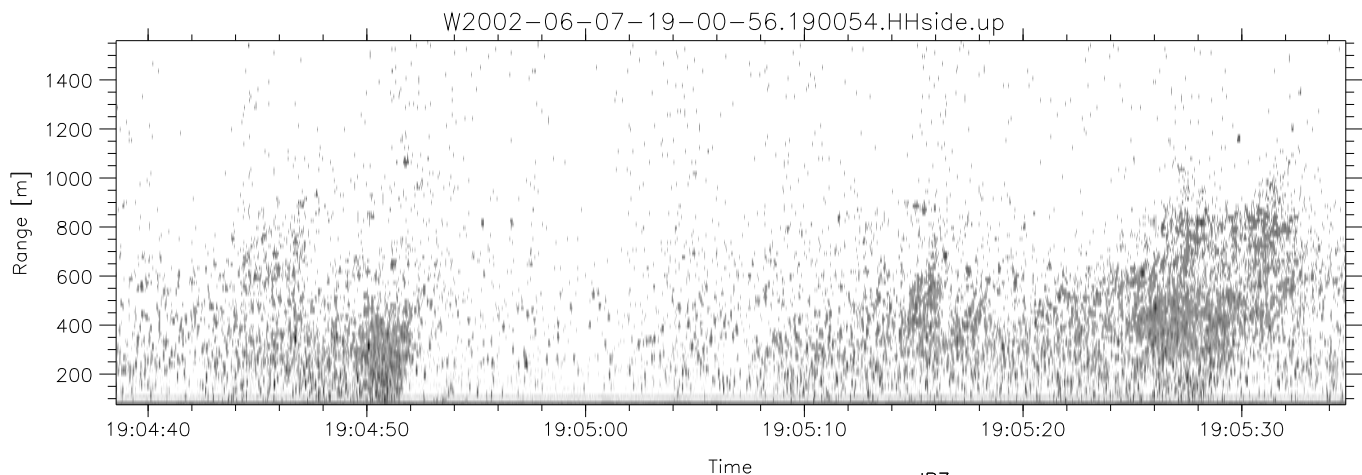
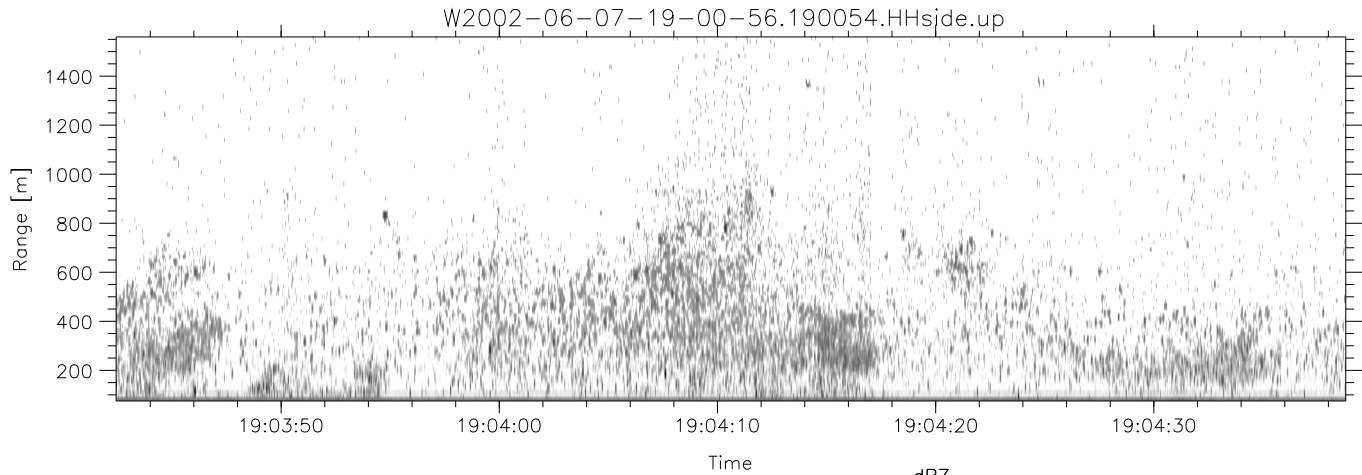


IHOP 2002 (dual-antenna config, modes 1,3,4,7) Data (cal: 49.0,50.0)

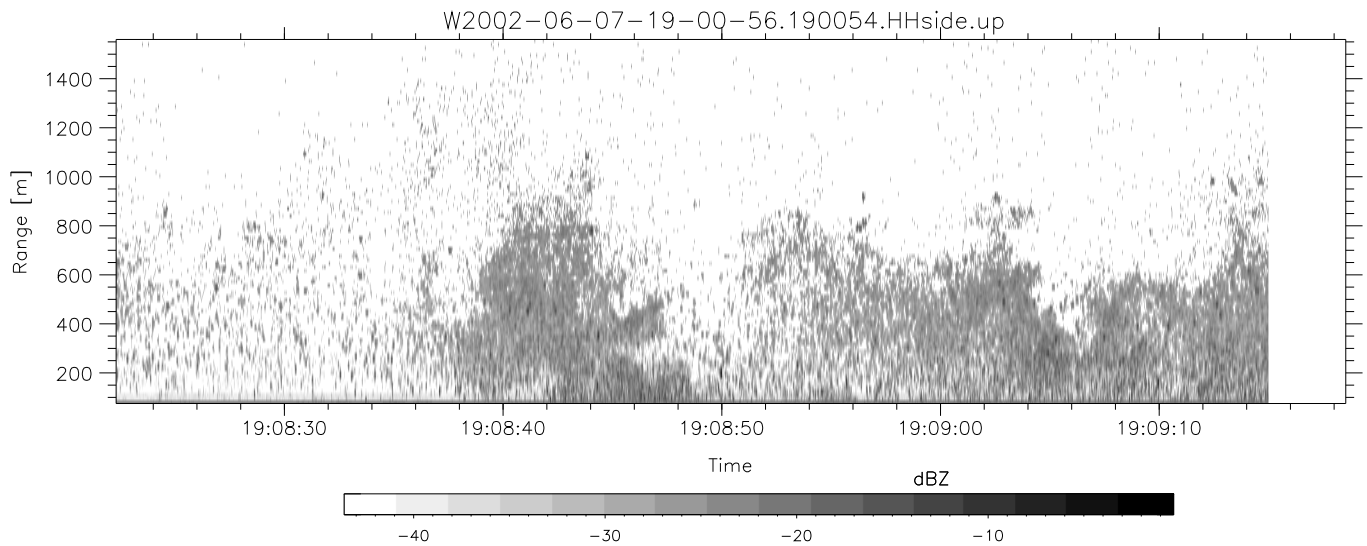
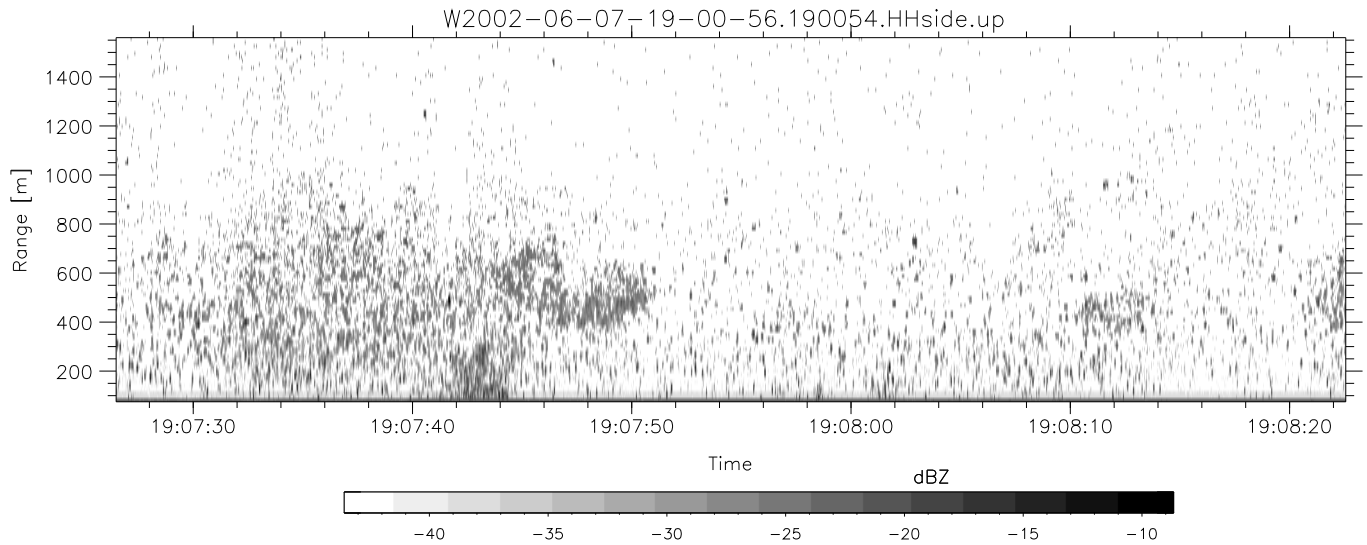
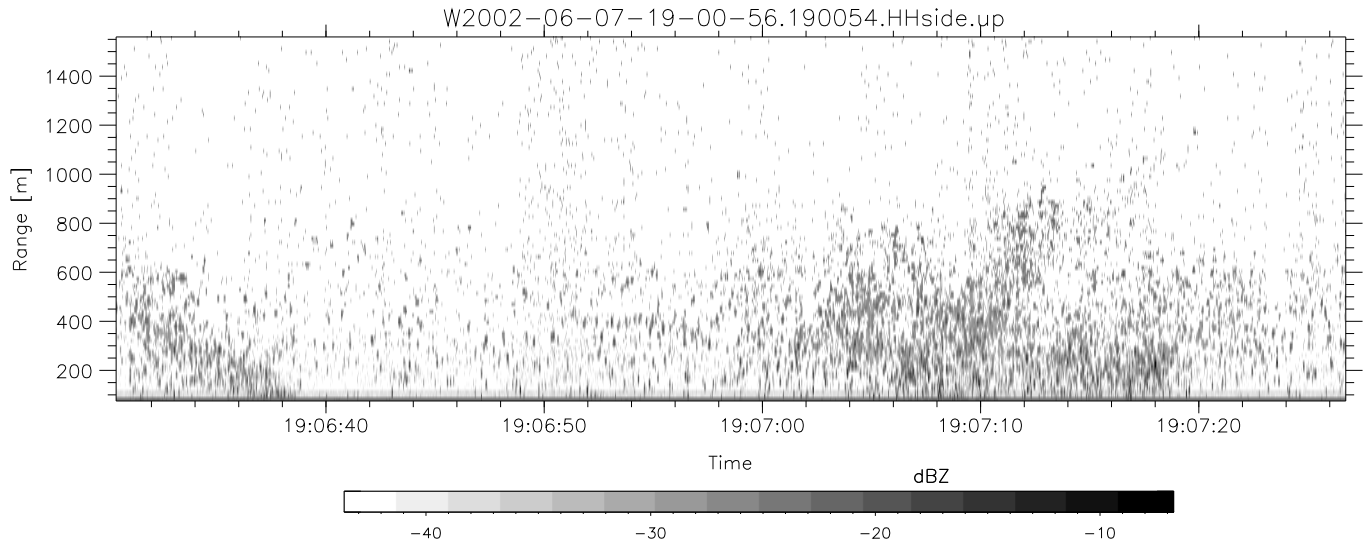
W2002-06-07-19-00-56 - PPMAG4  
 IRIG:0,Time: 19:00:54.52 to 19:15:34.06, Dur: 880s  
 TimeLngth: 879.54s, TimeInt: 29ms (34.1pps)  
 TimeCor=0.0s, DSPDif(mn,min,mx):29,28,385  
 PPS(min,max,std): 22,36,2.32  
 Prof: 369 to 30355, NumProf(t/r): 29986/17069  
 ProcTime/Recs: 19:00:54-19:09:14/0-17068  
 MxACQtime: 33ms; DRate: 190.8KB/s; Flags: 0, 0, 0  
 Pulse: 275ns, IFfilt: 5.0MHz; ppPol: HH HV VV  
 TxPol: HHVV, PRF: 20 10 20 10 kHz  
 Range: Delay 75m, Spacing 15m, Gates 100  
 Ave. Pulses: 84, Rng/Prof Aspect@90m/s: 5.7

	Min	Max	Mean	Std	Varc%
hhN(dB)	-68.60	-64.34	-66.39	-75.83	11.4
vvN(dB)	-69.09	-65.59	-67.21	-77.14	10.2
hhL(dB)	-17.40	-11.63	-14.80	-21.94	19.3
vvL(dB)	-25.08	-12.82	-14.94	-21.54	21.9
ppN(m/s)	-11.92	12.84	-0.01	4.18	
ppT(m/s)	-94.17	101.47	-0.11	32.99	
hh/vv(dB)	-NaN	51.16	17.71	31.18	2223
vh/hh(dB)	-NaN	-19.71	-27.74	-25.25	177.
hv/vv(dB)	-NaN	-14.27	-33.97	-30.26	234.
hnjmp(dB)	-2.09	2.27	0.17	-8.34	14.1
vnjmp(dB)	-2.19	2.39	0.18	-8.27	14.3



IHOP 2002 (dual-antenna config, modes 1,3,4,7) Data (cal: 49.0,50.0)

	Min	Max	Mean	Std	Varc%	
W2002-06-07-19-00-56 - PPMAG4						
IRIG:0,Time: 19:00:54.52 to 19:15:34.06, Dur: 880s	hhN (dB)	-68.60	-64.34	-66.39	-75.83	11.4
TimeLngth: 879.54s, TimeInt: 29ms (34.1pps)	vvN (dB)	-69.09	-65.59	-67.21	-77.14	10.2
TimeCor=0.0s, DSPDif(mn,min,mx):29,28,385	hhL (dB)	-17.40	-11.63	-14.80	-21.94	19.3
PPS(min,max,std): 22,36,2.32	vvL (dB)	-25.08	-12.82	-14.94	-21.54	21.9
Prof: 369 to 30355, NumProf(t/r): 29986/17069	ppN (m/s)	-11.92	12.84	-0.01	4.18	
ProcTime/Recs: 19:00:54-19:09:14/0-17068	ppT (m/s)	-94.17	101.47	-0.11	32.99	
MxACQtime: 33ms; DRate: 190.8KB/s; Flags: 0, 0, 0	hh/vv (dB)	-NaN	51.16	17.71	31.18	2223
Pulse: 275ns, IFfilt: 5.0MHz; ppPol: HH HV VV	vh/hh (dB)	-NaN	-19.71	-27.74	-25.25	177.
TxPol: HHVV, PRF: 20 10 20 10 kHz	hv/vv (dB)	-NaN	-14.27	-33.97	-30.26	234.
Range: Delay 75m, Spacing 15m, Gates 100	hnjmp (dB)	-2.09	2.27	0.17	-8.34	14.1
Ave. Pulses: 84, Rng/Prof Aspect@90m/s: 5.7	vnjmp (dB)	-2.19	2.39	0.18	-8.27	14.3



IHOP 2002 (dual-antenna config, modes 1,3,4,7) Data (cal: 49.0,50.0)

W2002-06-07-19-00-56 - PPMAG4	Min	Max	Mean	Std	Varc%	
IRIG:0,Time: 19:00:54.52 to 19:15:34.06, Dur: 880s	hhN (dB)	-68.60	-64.34	-66.39	-75.83	11.4
TimeLngth: 879.54s, TimeInt: 29ms (34.1pps)	vvN (dB)	-69.09	-65.59	-67.21	-77.14	10.2
TimeCor=0.0s, DSPDif(mn,min,mx):29,28,385	hhL (dB)	-17.40	-11.63	-14.80	-21.94	19.3
PPS(min,max,std): 22,36,2.32	vvL (dB)	-25.08	-12.82	-14.94	-21.54	21.9
Prof: 369 to 30355, NumProf(t/r): 29986/17069	ppN (m/s)	-11.92	12.84	-0.01	4.18	
ProcTime/Recs: 19:00:54-19:09:14/0-17068	ppT (m/s)	-94.17	101.47	-0.11	32.99	
MxACQtime: 33ms; DRate: 190.8KB/s; Flags: 0, 0, 0	hh/vv (dB)	-NaN	51.16	17.71	31.18	2223
Pulse: 275ns, IFilt: 5.0MHz; ppPol: HH HV VV	vh/hh (dB)	-NaN	-19.71	-27.74	-25.25	177.
TxPol: HHVV, PRF: 20 10 20 10 kHz	hv/vv (dB)	-NaN	-14.27	-33.97	-30.26	234.
Range: Delay 75m, Spacing 15m, Gates 100	hn_jmp (dB)	-2.09	2.27	0.17	-8.34	14.1
Ave. Pulses: 84, Rng/Prof Aspect@90m/s: 5.7	vn_jmp (dB)	-2.19	2.39	0.18	-8.27	14.3