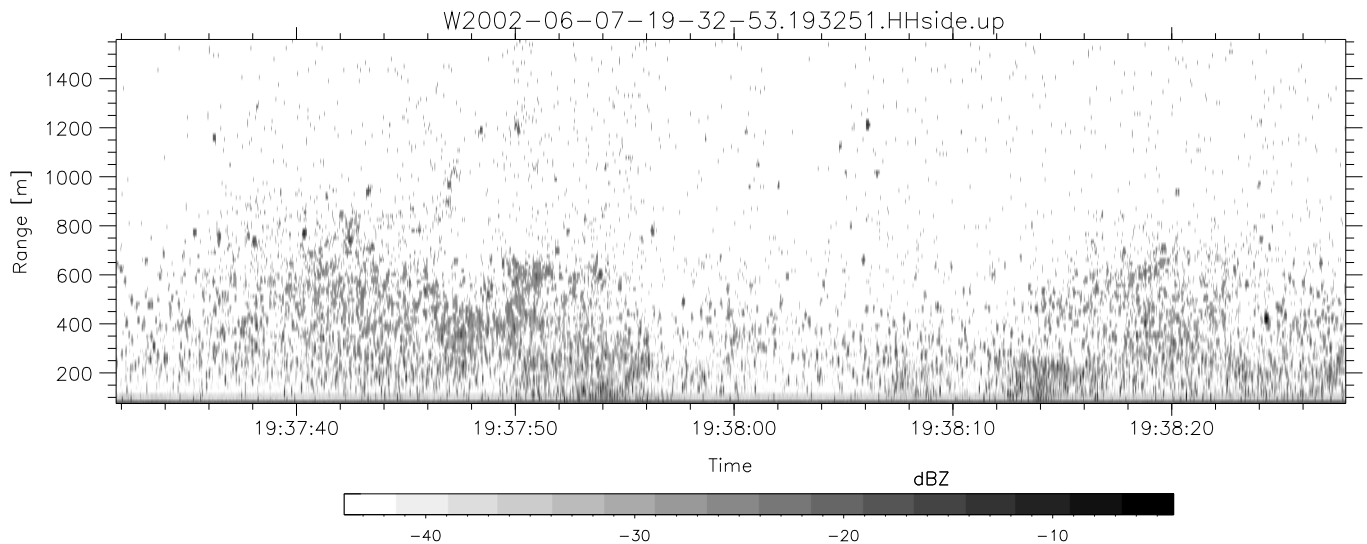
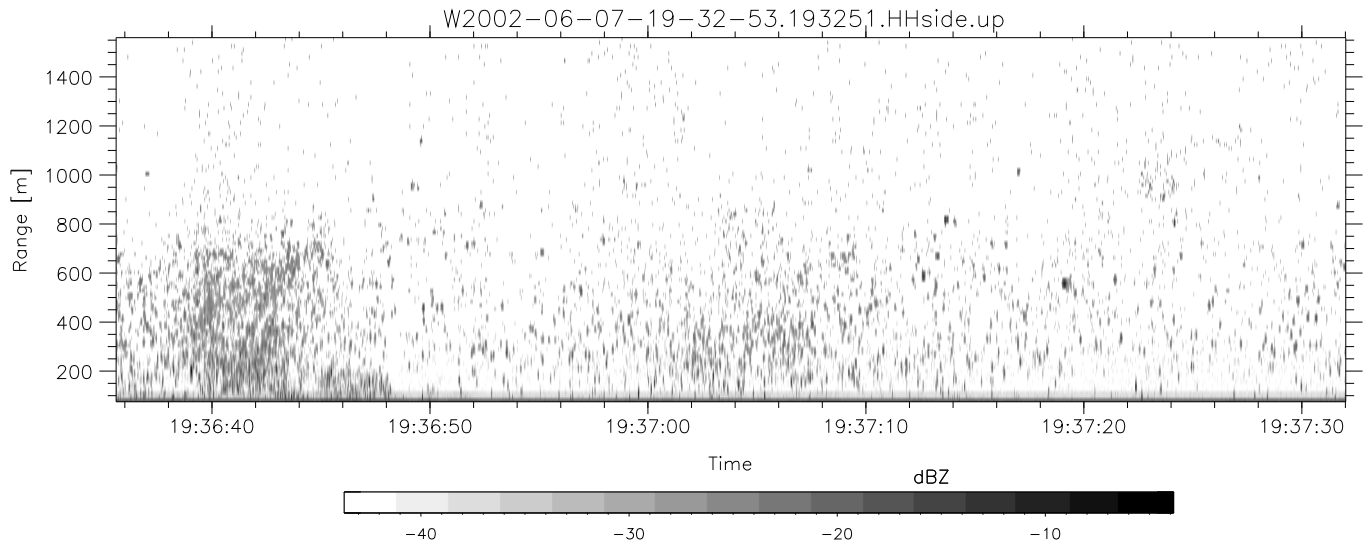
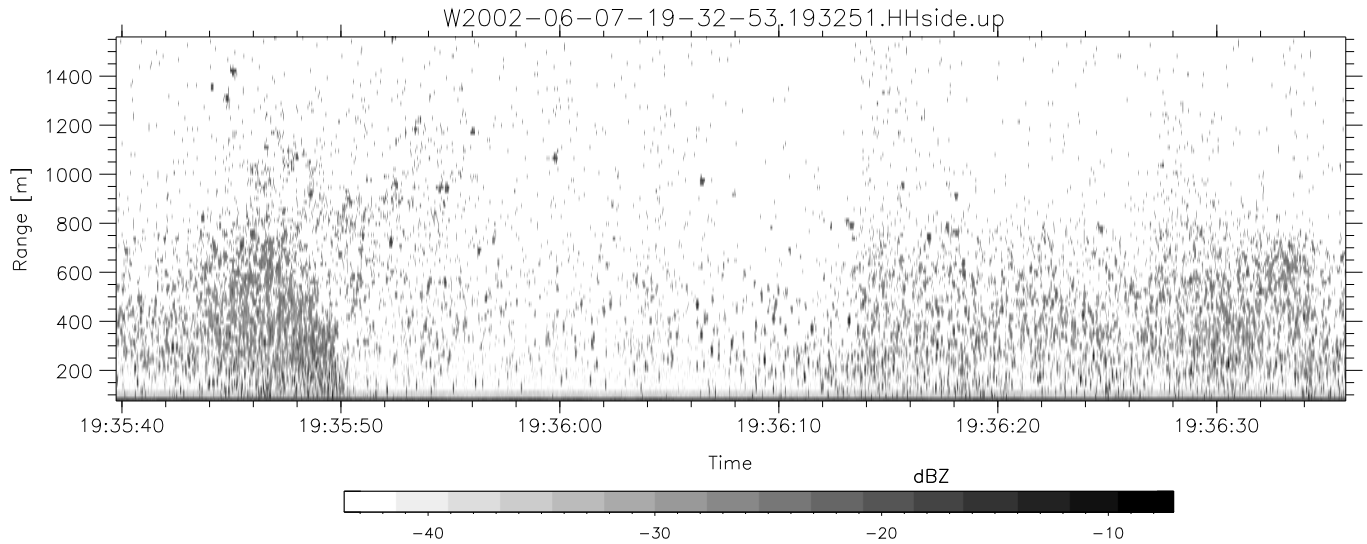


IHOP 2002 (dual-antenna config, modes 1,3,4,7) Data (cal: 49.0,50.0)

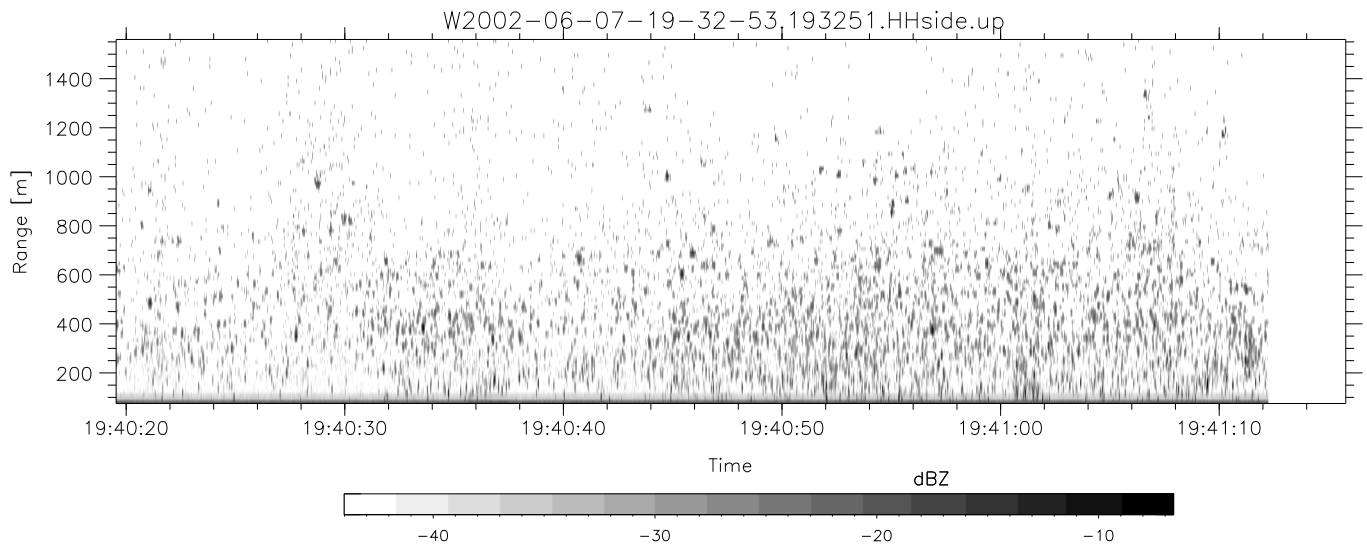
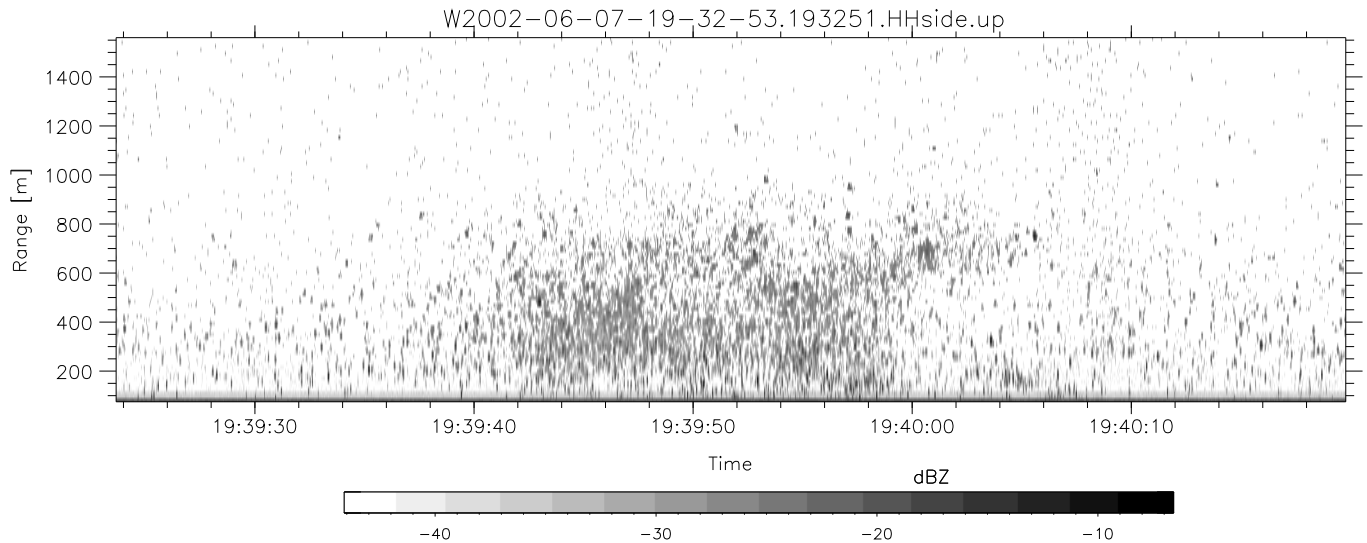
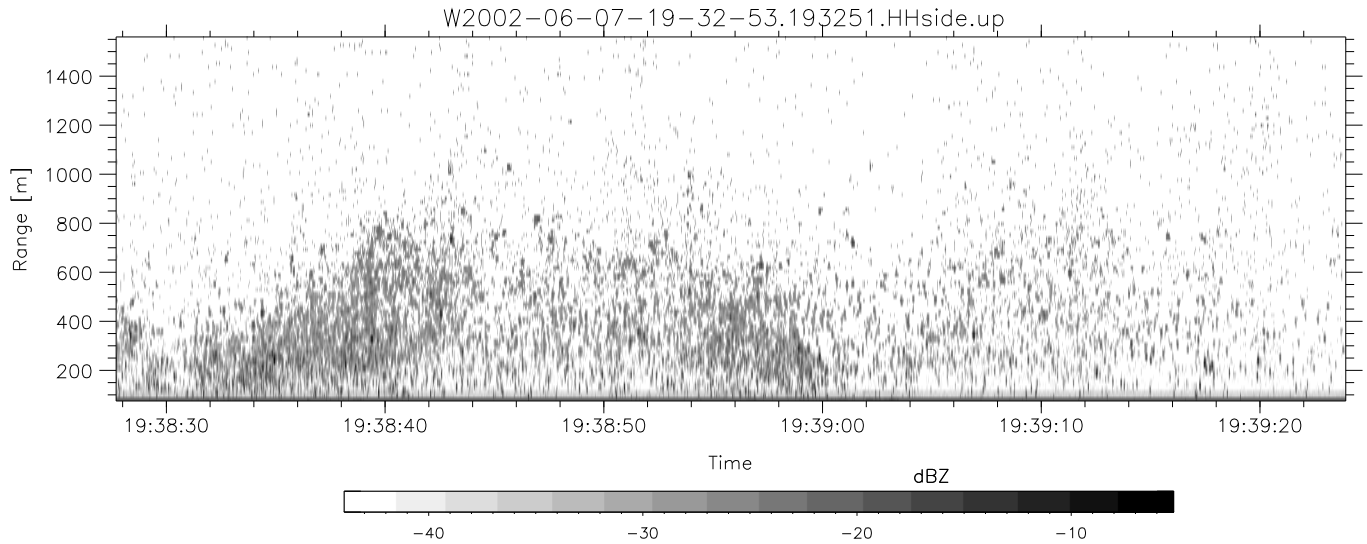
W2002-06-07-19-32-53 - PPMAG4
 IRIG:0,Time: 19:32:51.79 to 19:47:04.49, Dur: 853s
 TimeLngth: 852.70s, TimeInt: 29ms (34.1pps)
 TimeCor=0.0s, DSPDif(mn,min,mx):29,28,371
 PPS(min,max,std): 23,36,2.31
 Prof: 465 to 29536, NumProf(t/r): 29071/17069
 ProcTime/Recs: 19:32:51-19:41:12/0-17068
 MxACQtime: 33ms; DRate: 190.8KB/s; Flags: 0, 0, 0
 Pulse: 275ns, IFilt: 5.0MHz; ppPol: HH HV VV
 TxPol: HHVV, PRF: 20 10 20 10 kHz
 Range: Delay 75m, Spacing 15m, Gates 100
 Ave. Pulses: 84, Rng/Prof Aspect@90m/s: 5.7

	Min	Max	Mean	Std	Varc%
hhN(dB)	-68.91	-65.33	-66.86	-76.83	10.1
vvN(dB)	-69.14	-65.72	-67.33	-77.30	10.1
hhL(dB)	-13.75	-9.16	-11.84	-20.59	13.3
vvL(dB)	-20.40	-12.57	-14.87	-21.52	21.6
ppN(m/s)	-12.13	12.43	0.02	4.15	
ppT(m/s)	-95.80	98.17	0.13	32.76	
hh/vv(dB)	-NaN	66.43	26.23	46.01	9489
vh/hh(dB)	-NaN	-20.65	-28.50	-26.74	150.
hv/vv(dB)	-NaN	-15.77	-33.89	-30.69	209.
hnjmp(dB)	-2.13	2.39	0.17	-8.30	14.2
vnjmp(dB)	-2.28	2.42	0.19	-8.32	14.1



IHOP 2002 (dual-antenna config, modes 1,3,4,7) Data (cal: 49.0,50.0)

W2002-06-07-19-32-53 - PPMAG4	Min	Max	Mean	Std	Varc%
IRIG:0,Time: 19:32:51.79 to 19:47:04.49, Dur: 853s	-68.91	-65.33	-66.86	-76.83	10.1
TimeLngth: 852.70s, TimeInt: 29ms (34.1pps)	-69.14	-65.72	-67.33	-77.30	10.1
TimeCor=0.0s, DSPDif(mn,min,mx):29,28,371	-13.75	-9.16	-11.84	-20.59	13.3
PPS(min,max,std): 23,36,2.31	-20.40	-12.57	-14.87	-21.52	21.6
Prof: 465 to 29536, NumProf(t/r): 29071/17069	ppN(m/s)	-12.13	12.43	0.02	4.15
ProcTime/Recs: 19:32:51-19:41:12/0-17068	ppT(m/s)	-95.80	98.17	0.13	32.76
MxACQtime: 33ms; DRate: 190.8KB/s; Flags: 0, 0, 0	hh/vv(dB)	-NaN	66.43	26.23	46.01 9489
Pulse: 275ns, IFilt: 5.0MHz; ppPol: HH HV VV	vh/hh(dB)	-NaN	-20.65	-28.50	-26.74 150.
TxPol: HHVV, PRF: 20 10 20 10 kHz	hv/vv(dB)	-NaN	-15.77	-33.89	-30.69 209.
Range: Delay 75m, Spacing 15m, Gates 100	hnjmp(dB)	-2.13	2.39	0.17	-8.30 14.2
Ave. Pulses: 84, Rng/Prof Aspect@90m/s: 5.7	vnjmp(dB)	-2.28	2.42	0.19	-8.32 14.1



IHOP 2002 (dual-antenna config, modes 1,3,4,7) Data (cal: 49.0,50.0)

W2002-06-07-19-32-53 - PPMAG4	Min	Max	Mean	Std	Varc%	
IRIG:0,Time: 19:32:51.79 to 19:47:04.49, Dur: 853s	hhN (dB)	-68.91	-65.33	-66.86	-76.83	10.1
TimeLngth: 852.70s, TimeInt: 29ms (34.1pps)	vvN (dB)	-69.14	-65.72	-67.33	-77.30	10.1
TimeCor=0.0s, DSPDif(mn,min,mx):29,28,371	hhL (dB)	-13.75	-9.16	-11.84	-20.59	13.3
PPS(min,max,std): 23,36,2.31	vvL (dB)	-20.40	-12.57	-14.87	-21.52	21.6
Prof: 465 to 29536, NumProf(t/r): 29071/17069	ppN (m/s)	-12.13	12.43	0.02	4.15	
ProcTime/Recs: 19:32:51-19:41:12/0-17068	ppT (m/s)	-95.80	98.17	0.13	32.76	
MxACQtime: 33ms; DRate: 190.8KB/s; Flags: 0, 0, 0	hh/vv (dB)	-NaN	66.43	26.23	46.01	9489
Pulse: 275ns, IFfilt: 5.0MHz; ppPol: HH HV VV	vh/hh (dB)	-NaN	-20.65	-28.50	-26.74	150.
TxPol: HHVV, PRF: 20 10 20 10 kHz	hv/vv (dB)	-NaN	-15.77	-33.89	-30.69	209.
Range: Delay 75m, Spacing 15m, Gates 100	hn/jmp (dB)	-2.13	2.39	0.17	-8.30	14.2
Ave. Pulses: 84, Rng/Prof Aspect@90m/s: 5.7	vn/jmp (dB)	-2.28	2.42	0.19	-8.32	14.1