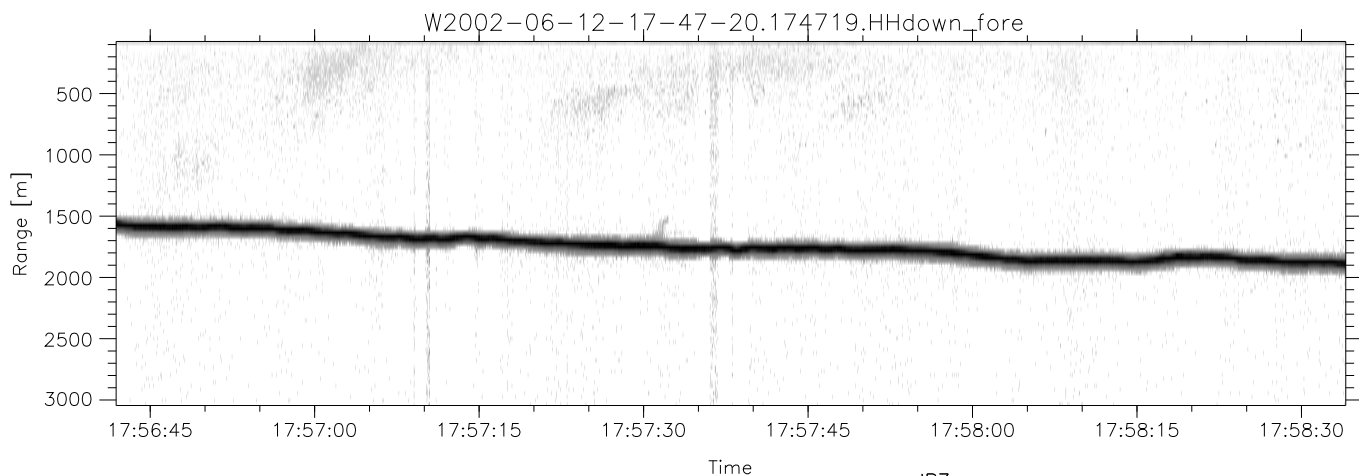
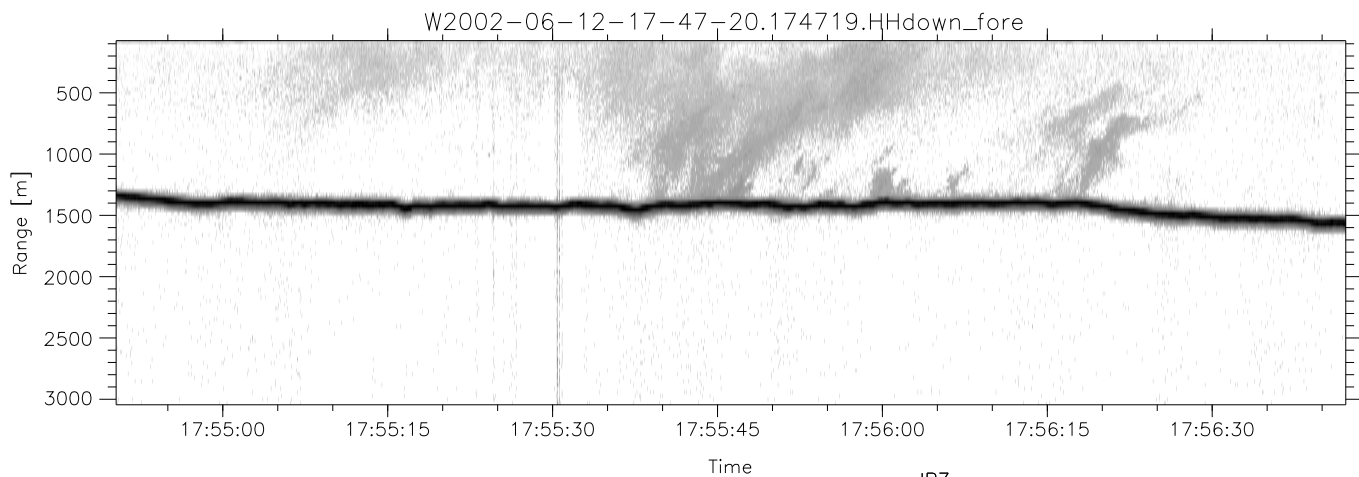
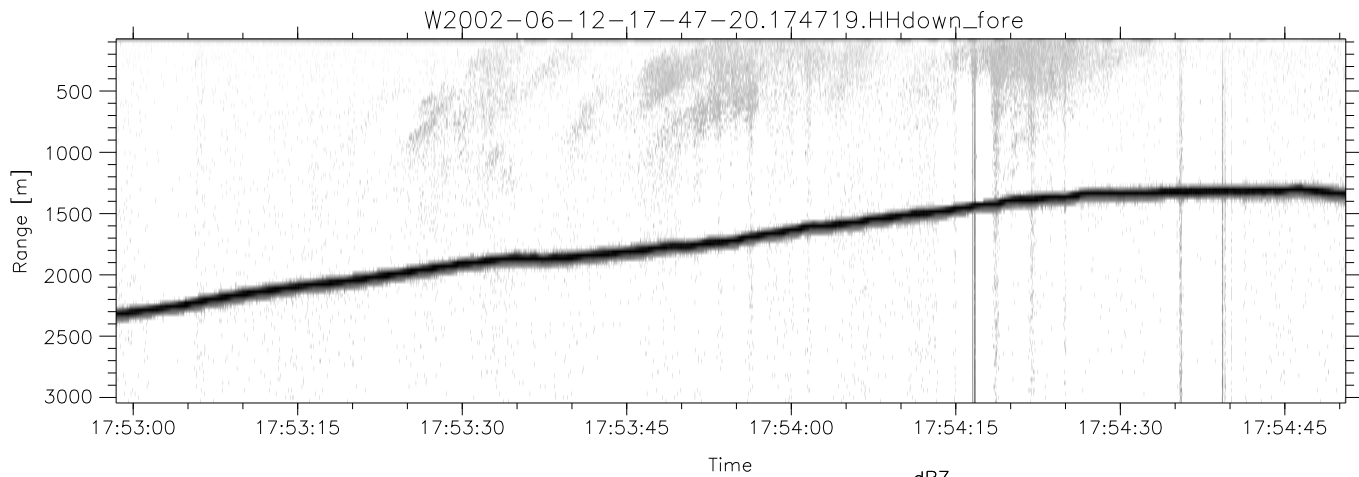


IHOP 2002 (dual-antenna config, modes 1,3,4,7) Data (cal: 55.0,50.0)

W2002-06-12-17-47-20 - PPMAG4  
 IRIG:0,Time: 17:47:19.79 to 19:08:44.20, Dur: 4885s  
 TimeLngth: 4884.41s, TimeInt: 28ms (34.7pps)  
 TimeCor=0.0s, DSPDif(mn,min,mx):28,28,394  
 PPS(min,max,std): 18,36,2.48  
 Prof: 617 to 170097, NumProf(t/r): 169480/34138  
 ProcTime/Recs: 17:47:19-18:03:42/0-34137  
 MxAcQtime: 33ms; DRate: 194.2KB/s; Flags: 0, 0, 0  
 Pulse: 275ns, IFilt: 5.0MHz; ppPol: HH HV VV  
 TxPol: HHVV, PRF: 20 10 20 10 kHz  
 Range: Delay 75m, Spacing 30m, Gates 100  
 Ave. Pulses: 84, Rng/Prof Aspect@90m/s: 11.6

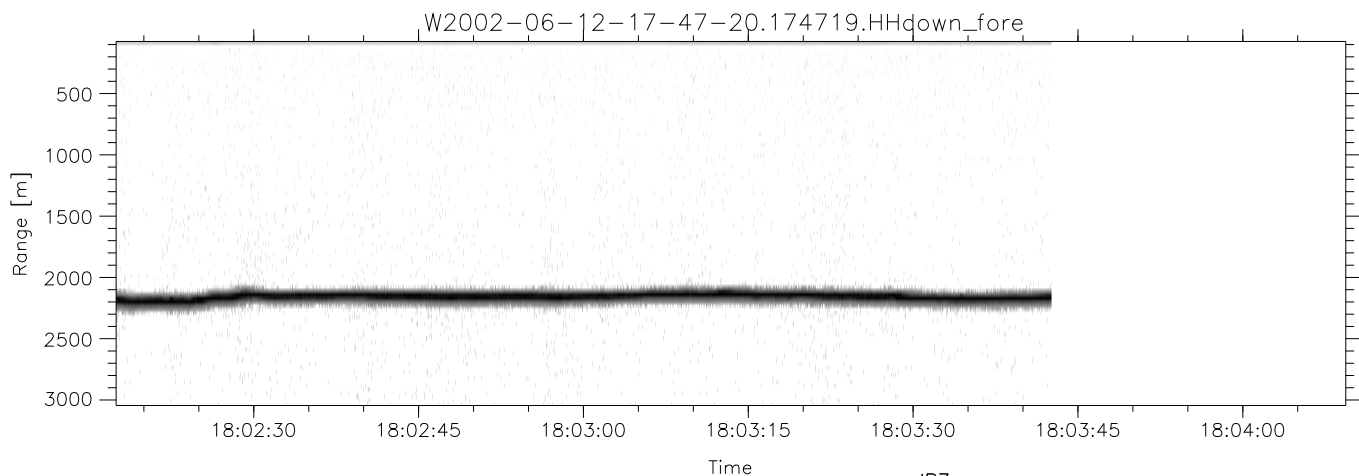
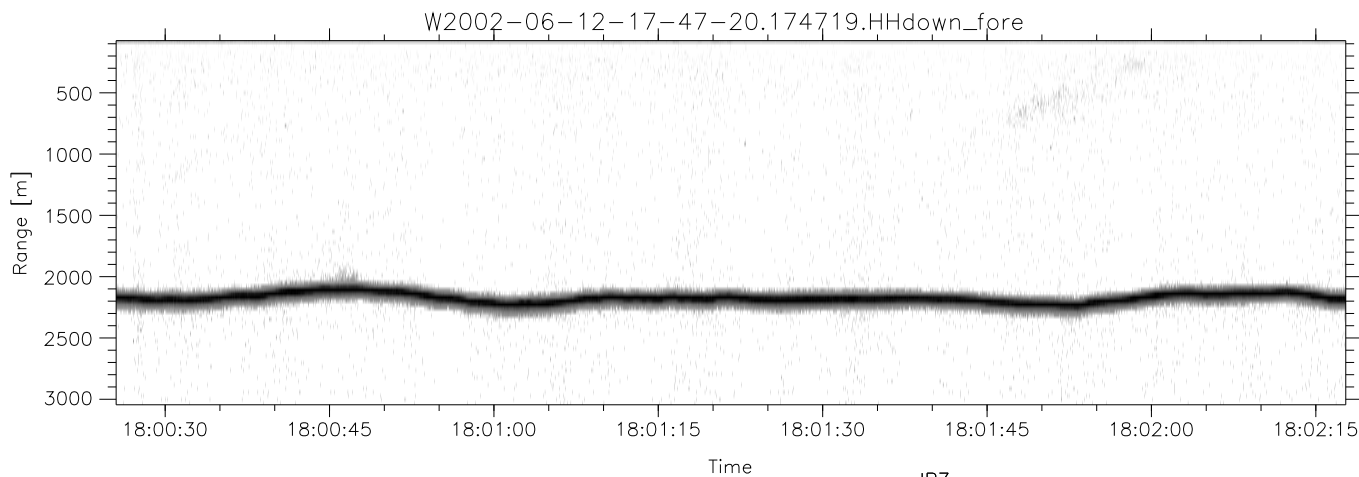
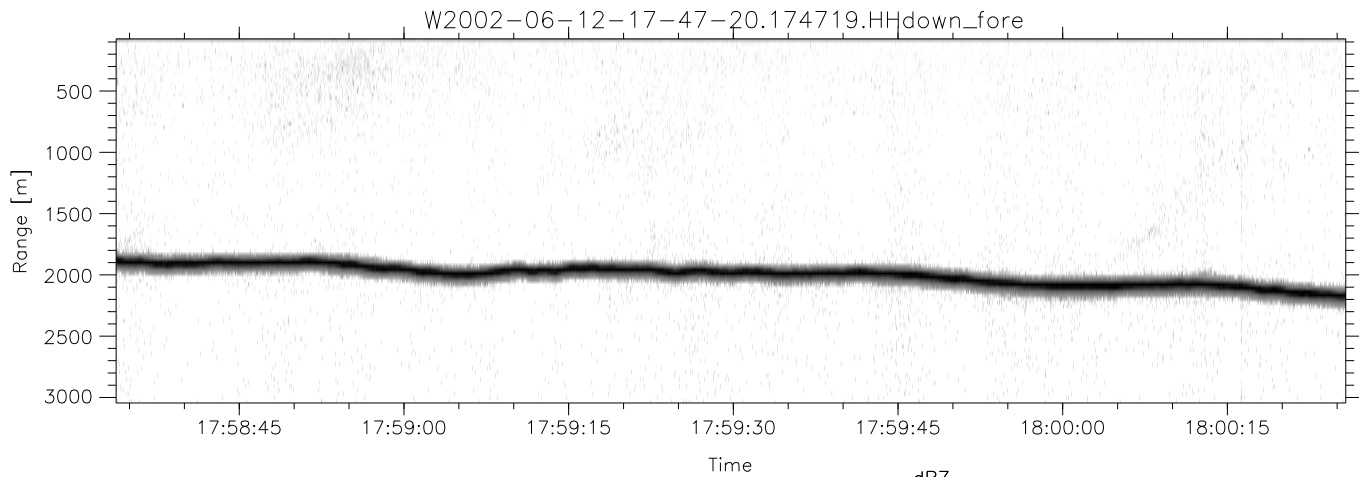
	Min	Max	Mean	Std	Varc%
hhN(dB)	-68.56	-61.91	-66.67	-75.81	12.2
vvN(dB)	-69.01	-61.11	-67.09	-75.77	13.6
hhL(dB)	-30.24	-7.47	-14.39	-15.61	75.5
vvL(dB)	-13.39	-4.67	-8.16	-12.54	36.5
ppN(m/s)	-12.55	12.58	0.33	4.19	
ppT(m/s)	-99.14	99.42	2.58	33.13	
hh/vv(dB)	-NaN	98.11	-NaN	75.99	-894
vh/hh(dB)	-NaN	-25.66	-49.37	-40.37	794.
hv/vv(dB)	-NaN	-28.63	-52.78	-46.11	464.
hnjmp(dB)	-2.28	2.50	0.20	-8.26	14.3
vnjmp(dB)	-2.27	2.49	0.21	-8.28	14.1



IHOP 2002 (dual-antenna config, modes 1,3,4,7) Data (cal: 55.0,50.0)

W2002-06-12-17-47-20 - PPMAG4  
 IRIG:0,Time: 17:47:19.79 to 19:08:44.20, Dur: 4885s  
 TimeLngth: 4884.41s, TimeInt: 28ms (34.7pps)  
 TimeCor=0.0s, DSPDif(mn,min,mx):28,28,394  
 PPS(min,max,std): 18,36,2.48  
 Prof: 617 to 170097, NumProf(t/r): 169480/34138  
 ProcTime/Recs: 17:47:19-18:03:42/0-34137  
 MxACQtime: 33ms; DRate: 194.2KB/s; Flags: 0, 0, 0  
 Pulse: 275ns, IFfilt: 5.0MHz; ppPol: HH HV VV  
 TxPol: HHVV, PRF: 20 10 20 10 kHz  
 Range: Delay 75m, Spacing 30m, Gates 100  
 Ave. Pulses: 84, Rng/Prof Aspect@90m/s: 11.6

	Min	Max	Mean	Std	Varc%
hhN (dB)	-68.56	-61.91	-66.67	-75.81	12.2
vvN (dB)	-69.01	-61.11	-67.09	-75.77	13.6
hhL (dB)	-30.24	-7.47	-14.39	-15.61	75.5
vvL (dB)	-13.39	-4.67	-8.16	-12.54	36.5
ppN (m/s)	-12.55	12.58	0.33	4.19	
ppT (m/s)	-99.14	99.42	2.58	33.13	
hh/vv (dB)	-NaN	98.11	-NaN	75.99	-894
vh/hh (dB)	-NaN	-25.66	-49.37	-40.37	794.
hv/vv (dB)	-NaN	-28.63	-52.78	-46.11	464.
hnjmp (dB)	-2.28	2.50	0.20	-8.26	14.3
vnjmp (dB)	-2.27	2.49	0.21	-8.28	14.1



IHOP 2002 (dual-antenna config, modes 1,3,4,7) Data (cal: 55.0,50.0)

W2002-06-12-17-47-20 - PPMAG4  
 IRIG:0,Time: 17:47:19.79 to 19:08:44.20, Dur: 4885s  
 TimeLngth: 4884.41s, TimeInt: 28ms (34.7pps)  
 TimeCor=0.0s, DSPDif(mn,min,mx):28,28,394  
 PPS(min,max,std): 18,36,2.48  
 Prof: 617 to 170097, NumProf(t/r): 169480/34138  
 ProcTime/Recs: 17:47:19-18:03:42/0-34137  
 MxACQtime: 33ms; DRate: 194.2KB/s; Flags: 0, 0, 0  
 Pulse: 275ns, IFilt: 5.0MHz; ppPol: HH HV VV  
 TxPol: HHVV, PRF: 20 10 20 10 kHz  
 Range: Delay 75m, Spacing 30m, Gates 100  
 Ave. Pulses: 84, Rng/Prof Aspect@90m/s: 11.6

	Min	Max	Mean	Std	Varc%
hhN(dB)	-68.56	-61.91	-66.67	-75.81	12.2
vvN(dB)	-69.01	-61.11	-67.09	-75.77	13.6
hhL(dB)	-30.24	-7.47	-14.39	-15.61	75.5
vvL(dB)	-13.39	-4.67	-8.16	-12.54	36.5
ppN(m/s)	-12.55	12.58	0.33	4.19	
ppT(m/s)	-99.14	99.42	2.58	33.13	
hh/vv(dB)	-NaN	98.11	-NaN	75.99	-894
vh/hh(dB)	-NaN	-25.66	-49.37	-40.37	794.
hv/vv(dB)	-NaN	-28.63	-52.78	-46.11	464.
hnjmp(dB)	-2.28	2.50	0.20	-8.26	14.3
vnjmp(dB)	-2.27	2.49	0.21	-8.28	14.1