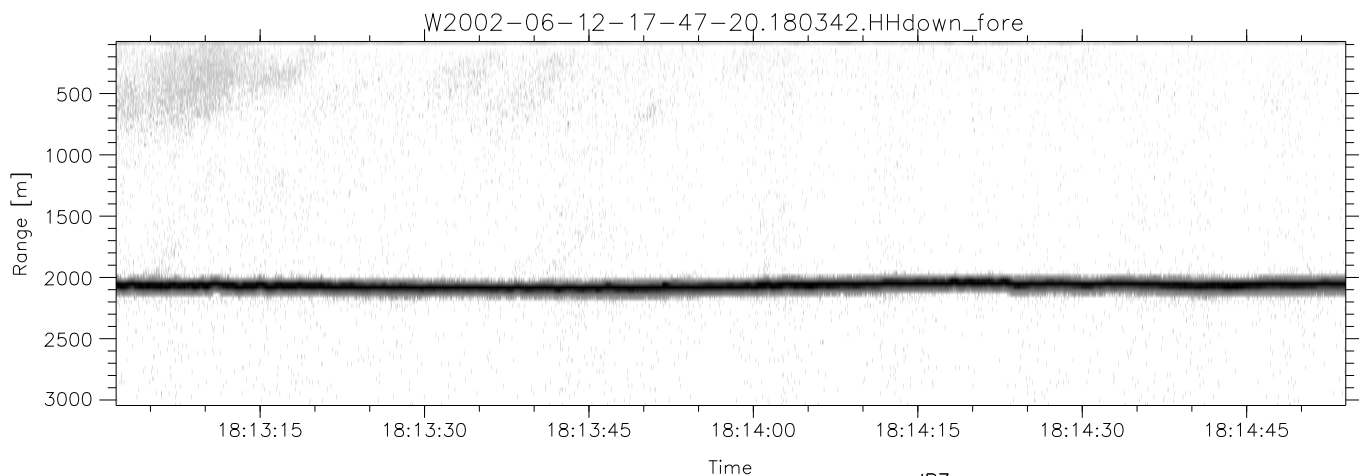
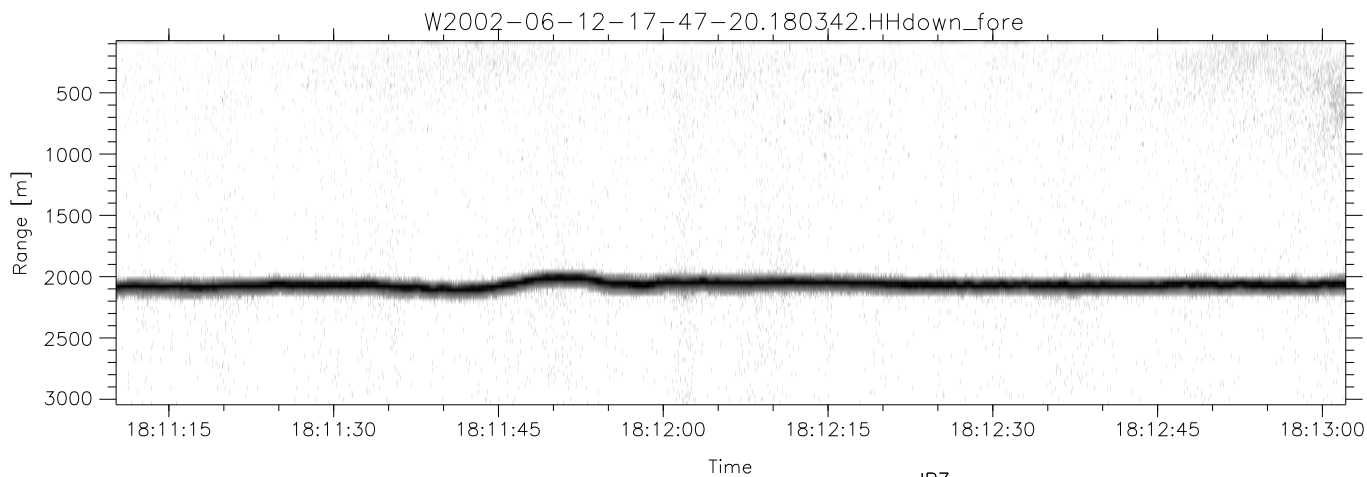
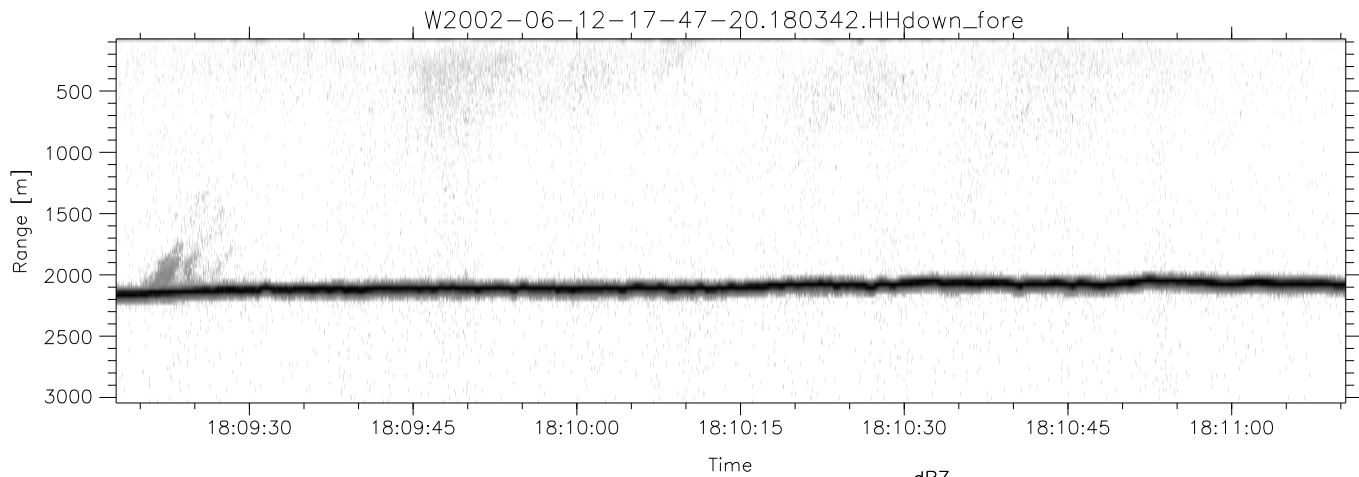


IHOP 2002 (dual-antenna config, modes 1,3,4,7) Data (cal: 55.0,50.0)

W2002-06-12-17-47-20 - PPMAG4
 IRIG:0,Time: 17:47:19.79 to 19:08:44.20, Dur: 4885s
 TimeLngth: 4884.41s, TimeInt: 28ms (34.7pps)
 TimeCor=0.0s, DSPDif(mn,min,mx):28,28,314
 PPS(min,max,std): 25,36,2.19
 Prof: 617 to 170097, NumProf(t/r): 169480/34138
 ProcTime/Recs: 18:03:42-18:20:02/34138-68275
 MxAcQtime: 33ms; DRate: 194.2KB/s; Flags: 0, 0, 0
 Pulse: 275ns, IFfilt: 5.0MHz; ppPol: HH HV VV
 TxPol: HHVV, PRF: 20 10 20 10 kHz
 Range: Delay 75m, Spacing 30m, Gates 100
 Ave. Pulses: 84, Rng/Prof Aspect@90m/s: 11.6

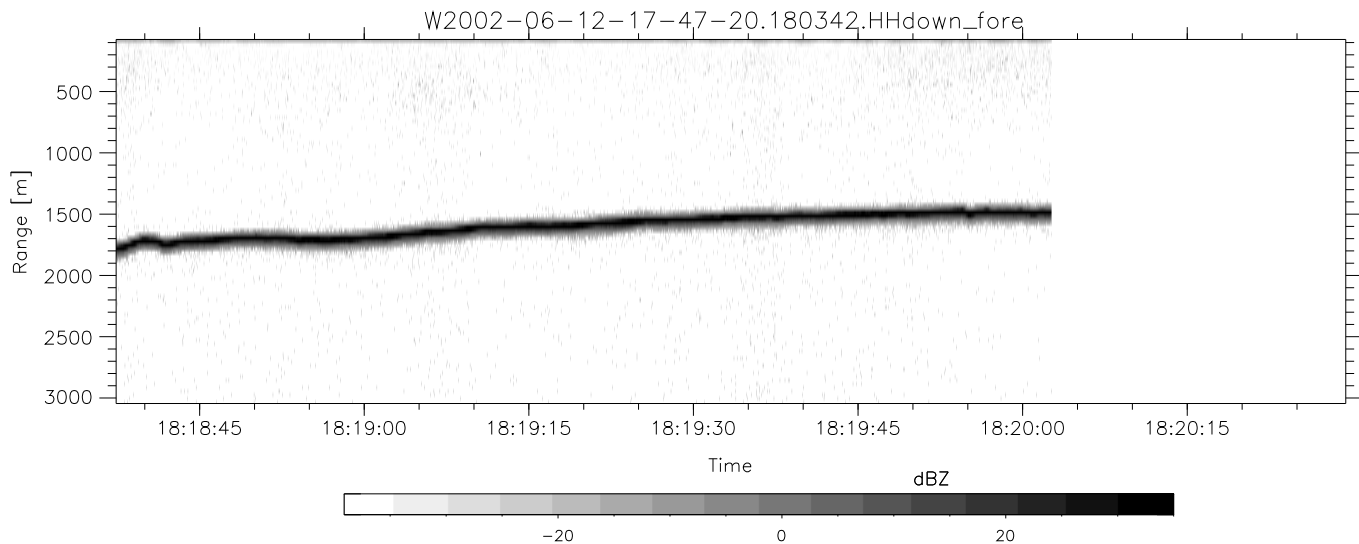
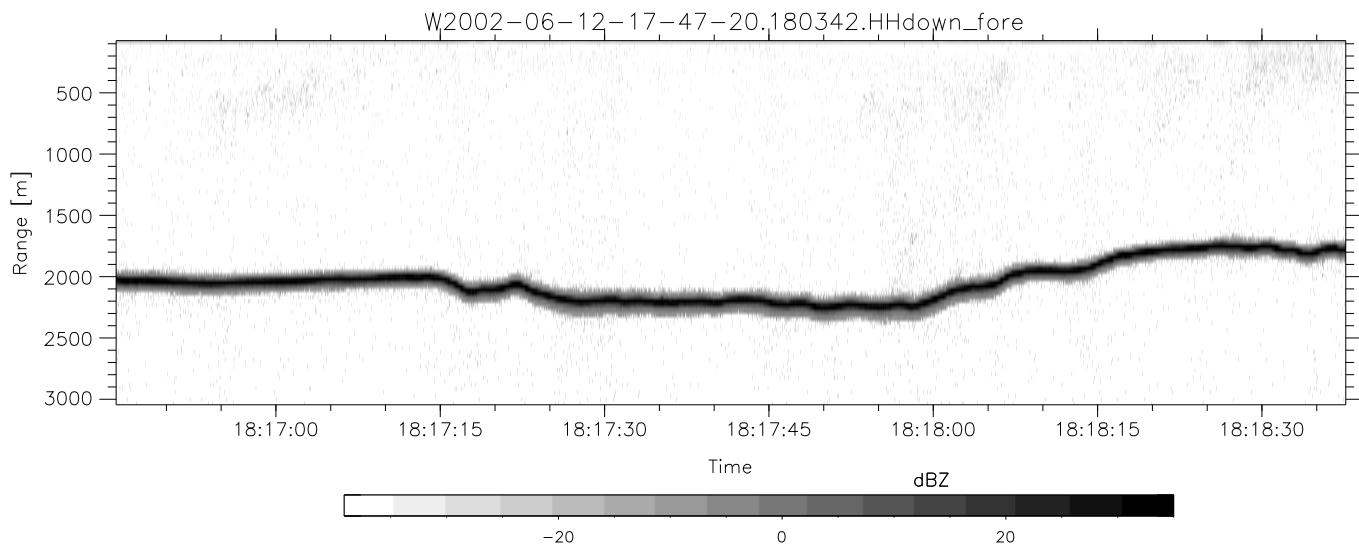
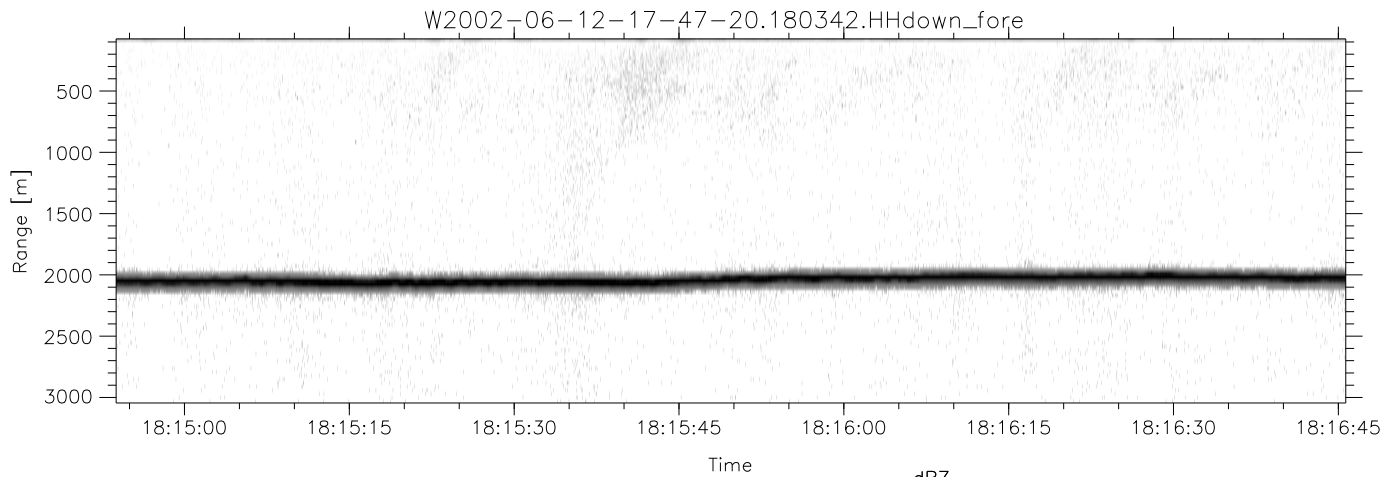
	Min	Max	Mean	Std	Varc%
hhN(dB)	-68.95	-65.36	-67.00	-76.91	10.2
vvN(dB)	-69.34	-65.57	-67.45	-77.24	10.5
hhL(dB)	-29.51	-8.28	-17.60	-18.94	73.5
vvL(dB)	-11.72	-5.84	-8.70	-16.63	16.1
ppN(m/s)	-12.54	12.47	-0.01	4.13	
ppT(m/s)	-99.05	98.54	-0.10	32.65	
hh/vv(dB)	-NaN	92.83	45.27	69.48	2632
vh/hh(dB)	-NaN	-31.83	-49.83	-42.48	544.
hv/vv(dB)	-NaN	-36.18	-52.86	-47.89	313.
hnjmp(dB)	-2.22	2.62	0.20	-8.28	14.2
vnjmp(dB)	-2.18	2.83	0.21	-8.24	14.3



IHOP 2002 (dual-antenna config, modes 1,3,4,7) Data (cal: 55.0,50.0)

W2002-06-12-17-47-20 - PPMAG4
 IRIG:0,Time: 17:47:19.79 to 19:08:44.20, Dur: 4885s
 TimeLngth: 4884.41s, TimeInt: 28ms (34.7pps)
 TimeCor=0.0s, DSPDif(mn,min,mx):28,28,314
 PPS(min,max,std): 25,36,2.19
 Prof: 617 to 170097, NumProf(t/r): 169480/34138
 ProcTime/Recs: 18:03:42-18:20:02/34138-68275
 MxAcQtime: 33ms; DRate: 194.2KB/s; Flags: 0, 0, 0
 Pulse: 275ns, IFilt: 5.0MHz; ppPol: HH HV VV
 TxPol: HHVV, PRF: 20 10 20 10 kHz
 Range: Delay 75m, Spacing 30m, Gates 100
 Ave. Pulses: 84, Rng/Prof Aspect@90m/s: 11.6

	Min	Max	Mean	Std	Varc%
hhN(dB)	-68.95	-65.36	-67.00	-76.91	10.2
vvN(dB)	-69.34	-65.57	-67.45	-77.24	10.5
hhL(dB)	-29.51	-8.28	-17.60	-18.94	73.5
vvL(dB)	-11.72	-5.84	-8.70	-16.63	16.1
ppN(m/s)	-12.54	12.47	-0.01	4.13	
ppT(m/s)	-99.05	98.54	-0.10	32.65	
hh/vv(dB)	-NaN	92.83	45.27	69.48	2632
vh/hh(dB)	-NaN	-31.83	-49.83	-42.48	544.
hv/vv(dB)	-NaN	-36.18	-52.86	-47.89	313.
hnjmp(dB)	-2.22	2.62	0.20	-8.28	14.2
vnjmp(dB)	-2.18	2.83	0.21	-8.24	14.3



IHOP 2002 (dual-antenna config, modes 1,3,4,7) Data (cal: 55.0,50.0)

W2002-06-12-17-47-20 - PPMAG4
 IRIG:0,Time: 17:47:19.79 to 19:08:44.20, Dur: 4885s
 TimeLngth: 4884.41s, TimeInt: 28ms (34.7pps)
 TimeCor=0.0s, DSPDif(mn,min,mx):28,28,314
 PPS(min,max,std): 25,36,2.19
 Prof: 617 to 170097, NumProf(t/r): 169480/34138
 ProcTime/Recs: 18:03:42-18:20:02/34138-68275
 MxAcQtime: 33ms; DRate: 194.2KB/s; Flags: 0, 0, 0
 Pulse: 275ns, IFilt: 5.0MHz; ppPol: HH HV VV
 TxPol: HHVV, PRF: 20 10 20 10 kHz
 Range: Delay 75m, Spacing 30m, Gates 100
 Ave. Pulses: 84, Rng/Prof Aspect@90m/s: 11.6

	Min	Max	Mean	Std	Varc%
hhN (dB)	-68.95	-65.36	-67.00	-76.91	10.2
vvN (dB)	-69.34	-65.57	-67.45	-77.24	10.5
hhL (dB)	-29.51	-8.28	-17.60	-18.94	73.5
vvL (dB)	-11.72	-5.84	-8.70	-16.63	16.1
ppN (m/s)	-12.54	12.47	-0.01	4.13	
ppT (m/s)	-99.05	98.54	-0.10	32.65	
hh/vv (dB)	-NaN	92.83	45.27	69.48	2632
vh/hh (dB)	-NaN	-31.83	-49.83	-42.48	544.
hv/vv (dB)	-NaN	-36.18	-52.86	-47.89	313.
hnjmp (dB)	-2.22	2.62	0.20	-8.28	14.2
vnjmp (dB)	-2.18	2.83	0.21	-8.24	14.3