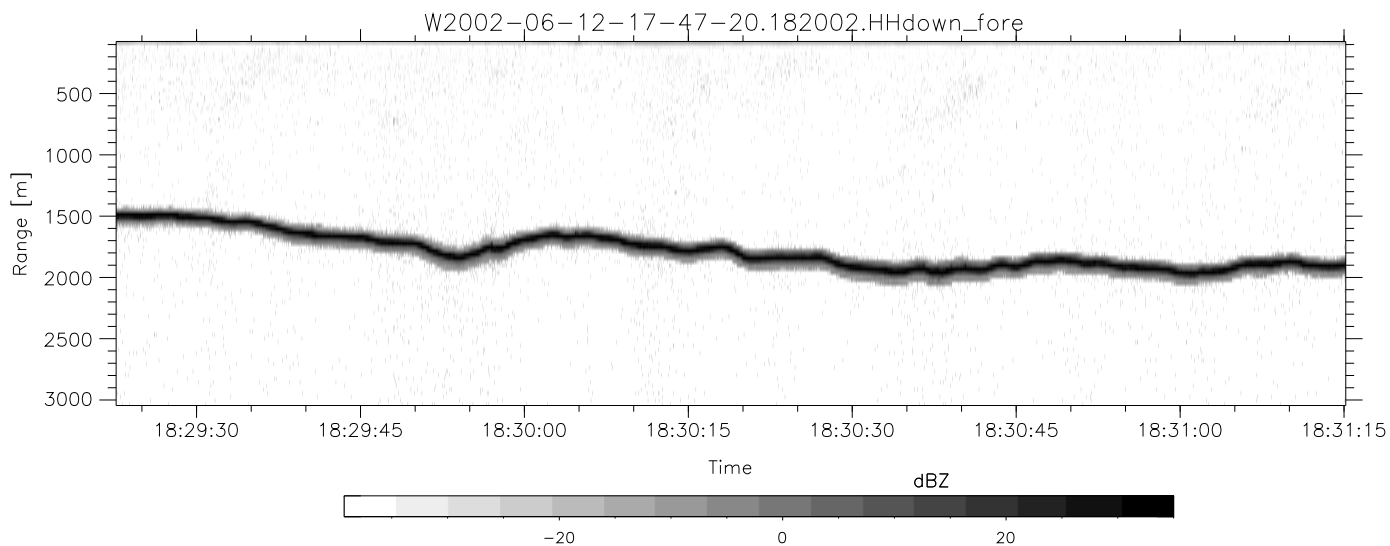
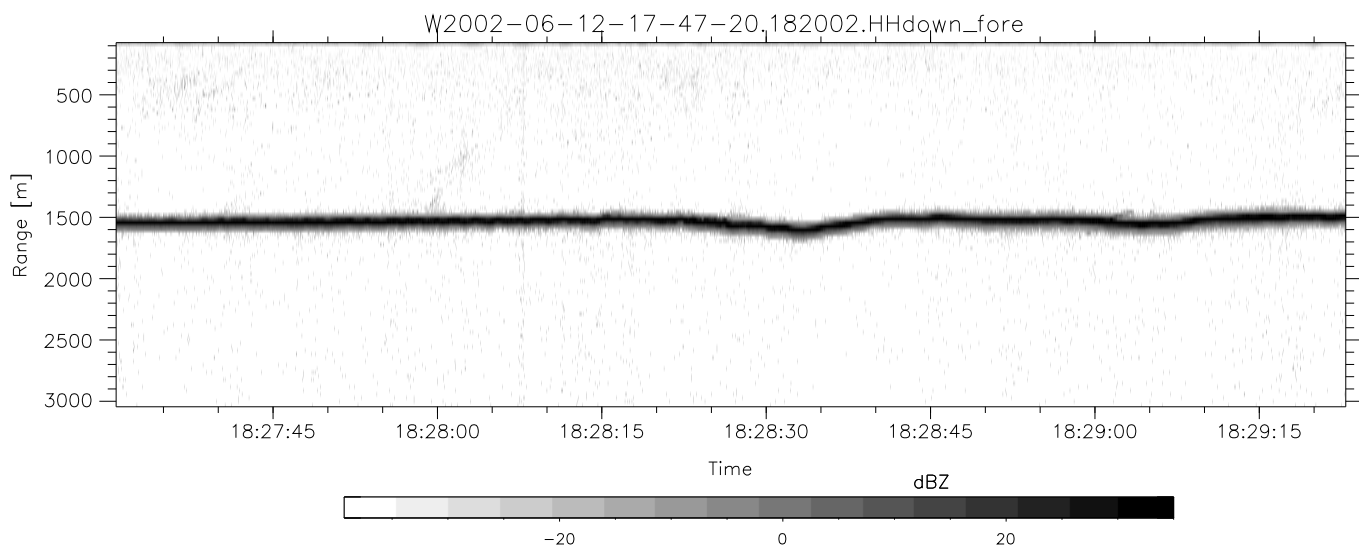
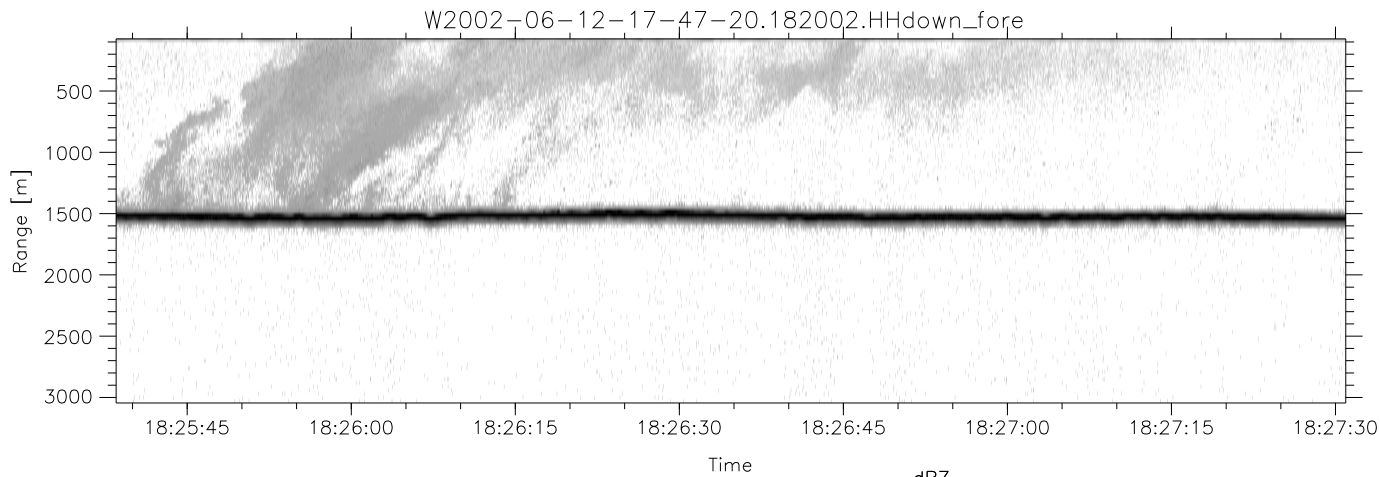


IHOP 2002 (dual-antenna config, modes 1,3,4,7) Data (cal: 55.0,50.0)

W2002-06-12-17-47-20 - PPMAG4  
 IRIG:0,Time: 17:47:19.79 to 19:08:44.20, Dur: 4885s  
 TimeLngth: 4884.41s, TimeInt: 28ms (34.7pps)  
 TimeCor=0.0s, DSPDif(mn,min,mx):28,28,332  
 PPS(min,max,std): 24,36,2.22  
 Prof: 617 to 170097, NumProf(t/r): 169480/34138  
 ProcTime/Recs: 18:20:02-18:36:24/68276-102413  
 MxACQtime: 33ms; DRate: 194.2KB/s; Flags: 0, 0, 0  
 Pulse: 275ns, IFilt: 5.0MHz; ppPol: HH HV VV  
 TxPol: HHVV, PRF: 20 10 20 10 kHz  
 Range: Delay 75m, Spacing 30m, Gates 100  
 Ave. Pulses: 84, Rng/Prof Aspect@90m/s: 11.6

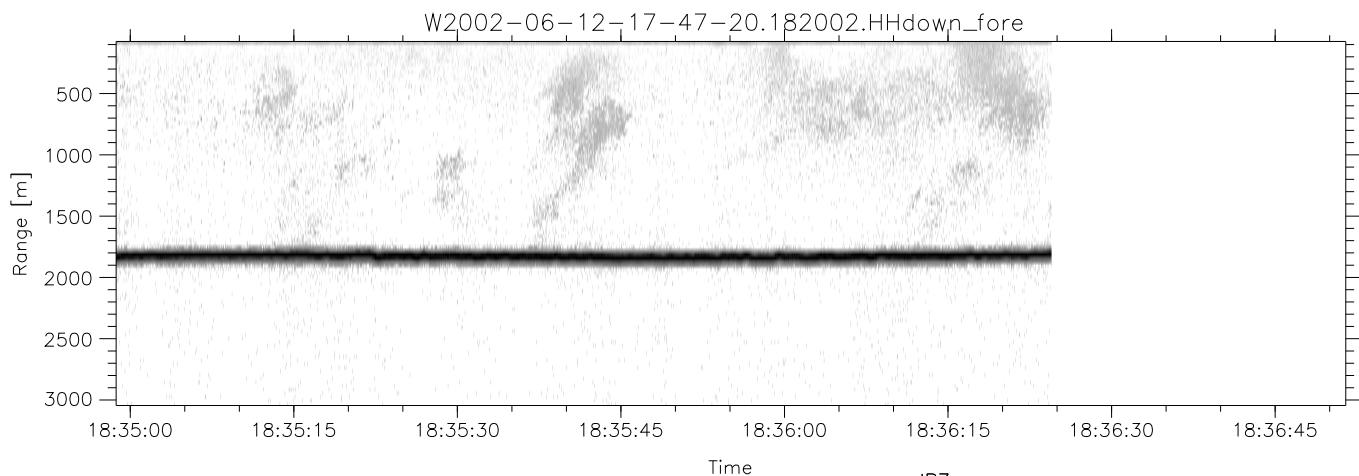
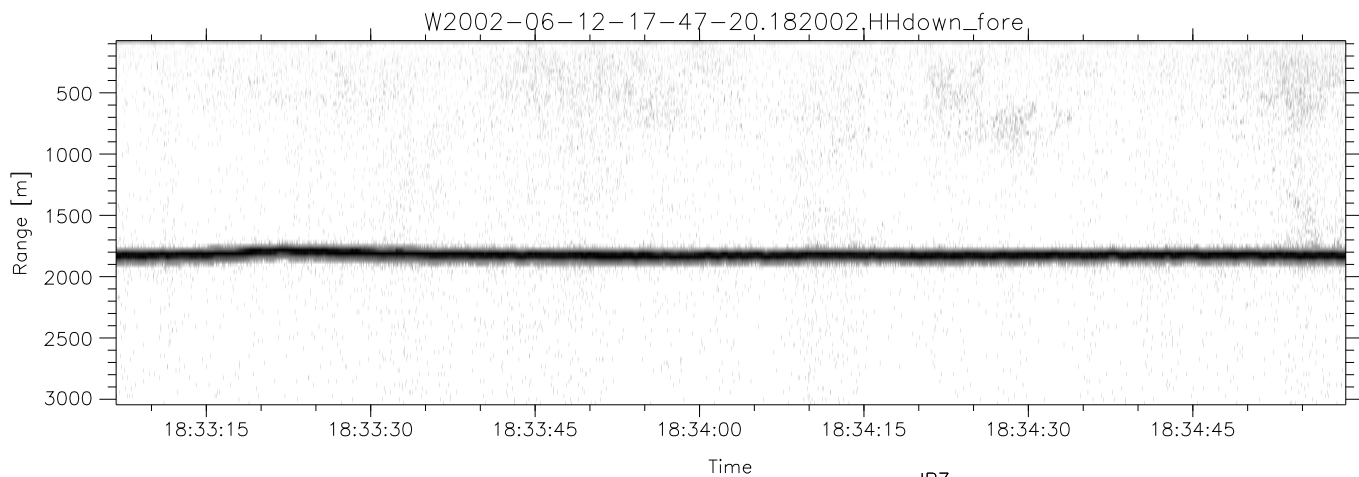
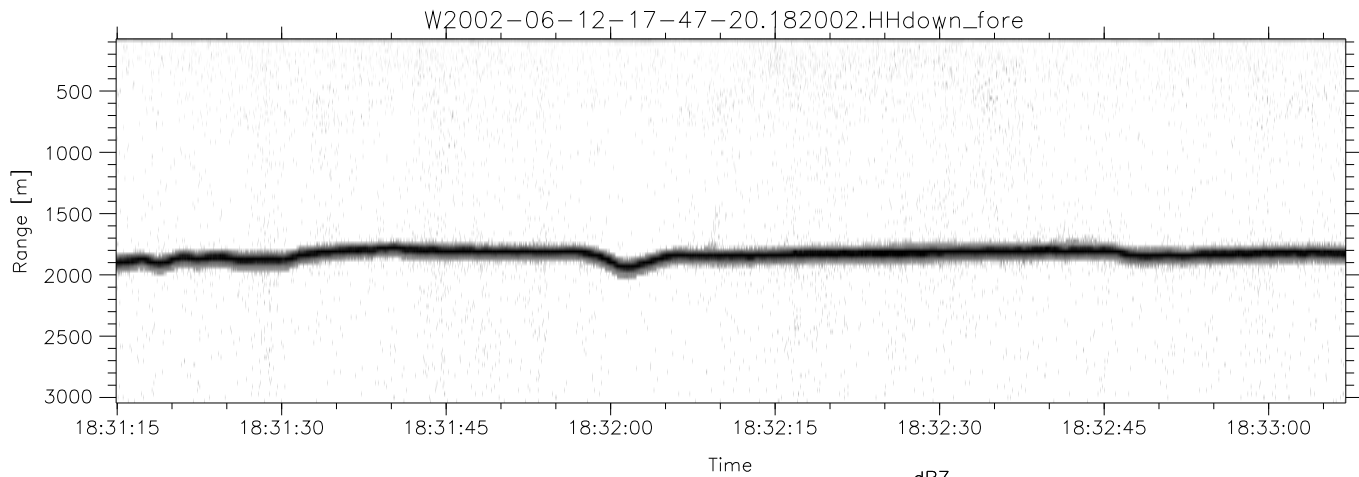
	Min	Max	Mean	Std	Varc%
hhN(dB)	-68.94	-65.37	-67.13	-77.06	10.2
vvN(dB)	-69.43	-65.54	-67.62	-77.47	10.4
hhL(dB)	-25.07	-7.36	-15.77	-17.61	65.5
vvL(dB)	-12.97	-5.82	-8.61	-14.36	26.6
ppN(m/s)	-12.52	12.51	-0.09	4.12	
ppT(m/s)	-98.89	98.79	-0.74	32.51	
hh/vv(dB)	-NaN	95.21	-NaN	91.57	-317
vh/hh(dB)	-NaN	-31.49	-49.87	-43.28	455.
hv/vv(dB)	-NaN	-36.40	-52.82	-47.79	318.
hnjmp(dB)	-2.41	2.75	0.20	-8.29	14.2
vnjmp(dB)	-2.27	2.51	0.21	-8.20	14.4



IHOP 2002 (dual-antenna config, modes 1,3,4,7) Data (cal: 55.0,50.0)

W2002-06-12-17-47-20 - PPMAG4  
 IRIG:0,Time: 17:47:19.79 to 19:08:44.20, Dur: 4885s  
 TimeLngth: 4884.41s, TimeInt: 28ms (34.7pps)  
 TimeCor=0.0s, DSPDif(mn,min,mx):28,28,332  
 PPS(min,max,std): 24,36,2.22  
 Prof: 617 to 170097, NumProf(t/r): 169480/34138  
 ProcTime/Recs: 18:20:02-18:36:24/68276-102413  
 MxAcQtime: 33ms; DRate: 194.2KB/s; Flags: 0, 0, 0  
 Pulse: 275ns, IFilt: 5.0MHz; ppPol: HH HV VV  
 TxPol: HHVV, PRF: 20 10 20 10 kHz  
 Range: Delay 75m, Spacing 30m, Gates 100  
 Ave. Pulses: 84, Rng/Prof Aspect@90m/s: 11.6

	Min	Max	Mean	Std	Varc%
hhN(dB)	-68.94	-65.37	-67.13	-77.06	10.2
vvN(dB)	-69.43	-65.54	-67.62	-77.47	10.4
hhL(dB)	-25.07	-7.36	-15.77	-17.61	65.5
vvL(dB)	-12.97	-5.82	-8.61	-14.36	26.6
ppN(m/s)	-12.52	12.51	-0.09	4.12	
ppT(m/s)	-98.89	98.79	-0.74	32.51	
hh/vv(dB)	-NaN	95.21	-NaN	91.57	-317
vh/hh(dB)	-NaN	-31.49	-49.87	-43.28	455.
hv/vv(dB)	-NaN	-36.40	-52.82	-47.79	318.
hh_jmp(dB)	-2.41	2.75	0.20	-8.29	14.2
vv_jmp(dB)	-2.27	2.51	0.21	-8.20	14.4



IHOP 2002 (dual-antenna config, modes 1,3,4,7) Data (cal: 55.0,50.0)

W2002-06-12-17-47-20 - PPMAG4  
 IRIG:0,Time: 17:47:19.79 to 19:08:44.20, Dur: 4885s  
 TimeLngth: 4884.41s, TimeInt: 28ms (34.7pps)  
 TimeCor=0.0s, DSPDif(mn,min,mx):28,28,332  
 PPS(min,max,std): 24,36,2.22  
 Prof: 617 to 170097, NumProf(t/r): 169480/34138  
 ProcTime/Recs: 18:20:02-18:36:24/68276-102413  
 MxACQtime: 33ms; DRate: 194.2KB/s; Flags: 0, 0, 0  
 Pulse: 275ns, IFilt: 5.0MHz; ppPol: HH HV VV  
 TxPol: HHVV, PRF: 20 10 20 10 kHz  
 Range: Delay 75m, Spacing 30m, Gates 100  
 Ave. Pulses: 84, Rng/Prof Aspect@90m/s: 11.6

	Min	Max	Mean	Std	Varc%
hhN(dB)	-68.94	-65.37	-67.13	-77.06	10.2
vvN(dB)	-69.43	-65.54	-67.62	-77.47	10.4
hhL(dB)	-25.07	-7.36	-15.77	-17.61	65.5
vvL(dB)	-12.97	-5.82	-8.61	-14.36	26.6
ppN(m/s)	-12.52	12.51	-0.09	4.12	
ppT(m/s)	-98.89	98.79	-0.74	32.51	
hh/vv(dB)	-NaN	95.21	-NaN	91.57	-317
vh/hh(dB)	-NaN	-31.49	-49.87	-43.28	455.
hv/vv(dB)	-NaN	-36.40	-52.82	-47.79	318.
hnjmp(dB)	-2.41	2.75	0.20	-8.29	14.2
vnjmp(dB)	-2.27	2.51	0.21	-8.20	14.4