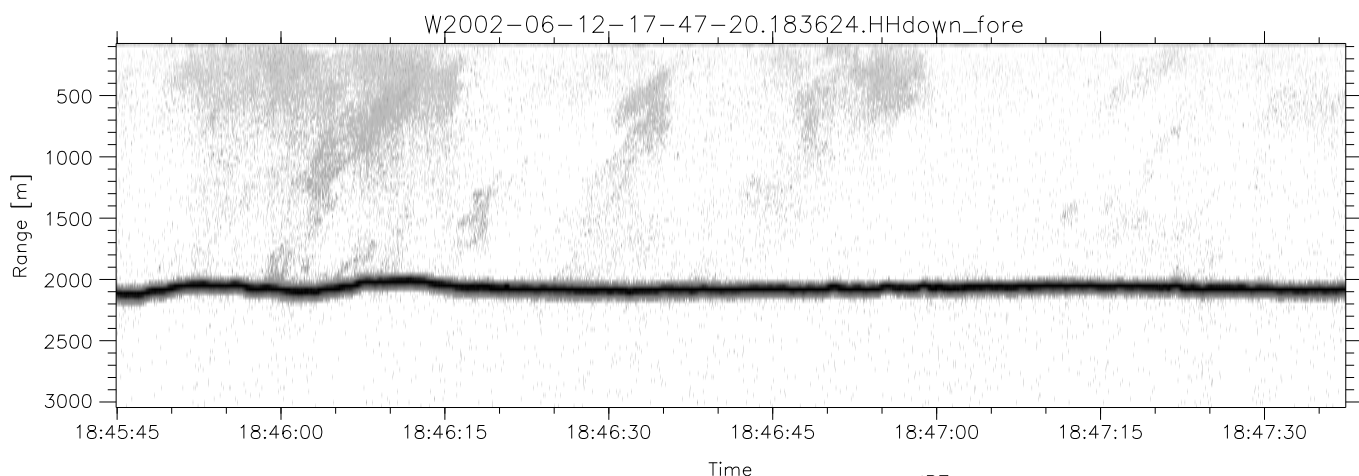
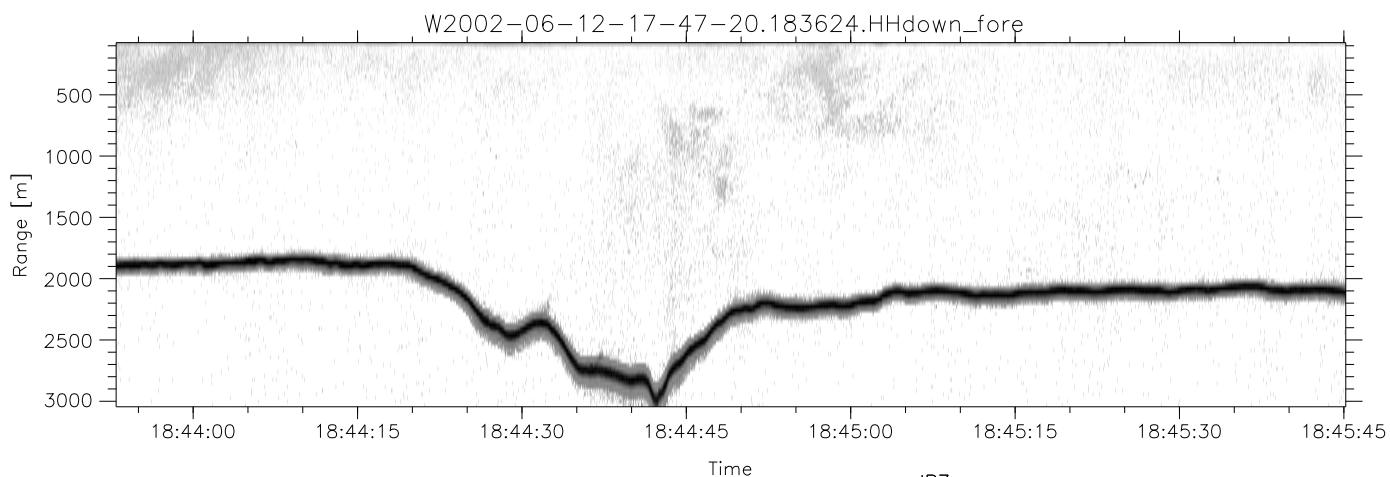
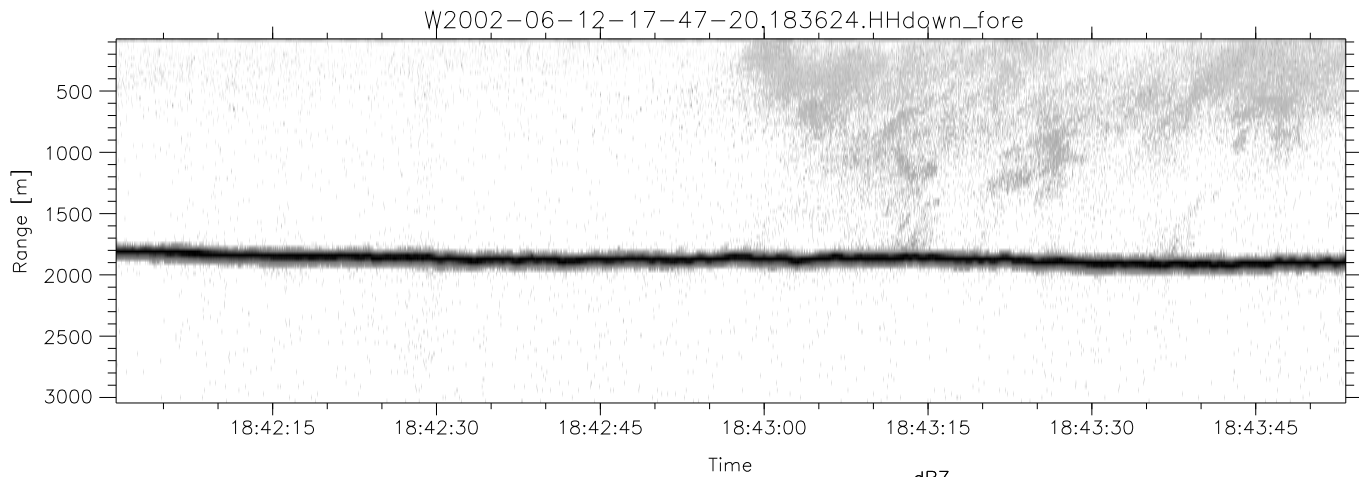


IHOP 2002 (dual-antenna config, modes 1,3,4,7) Data (cal: 55.0,50.0)

W2002-06-12-17-47-20 - PPMAG4
 IRIG:0,Time: 17:47:19.79 to 19:08:44.20, Dur: 4885s
 TimeLngth: 4884.41s, TimeInt: 28ms (34.7pps)
 TimeCor=0.0s, DSPDif(mn,min,mx):28,28,496
 PPS(min,max,std): 19,36,2.36
 Prof: 617 to 170097, NumProf(t/r): 169480/34138
 ProcTime/Recs: 18:36:24-18:52:48/102414-136551
 MxACQtime: 33ms; DRate: 194.2KB/s; Flags: 0, 0, 0
 Pulse: 275ns, IFfilt: 5.0MHz; ppPol: HH HV VV
 TxPol: HHVV, PRF: 20 10 20 10 kHz
 Range: Delay 75m, Spacing 30m, Gates 100
 Ave. Pulses: 84, Rng/Prof Aspect@90m/s: 11.6

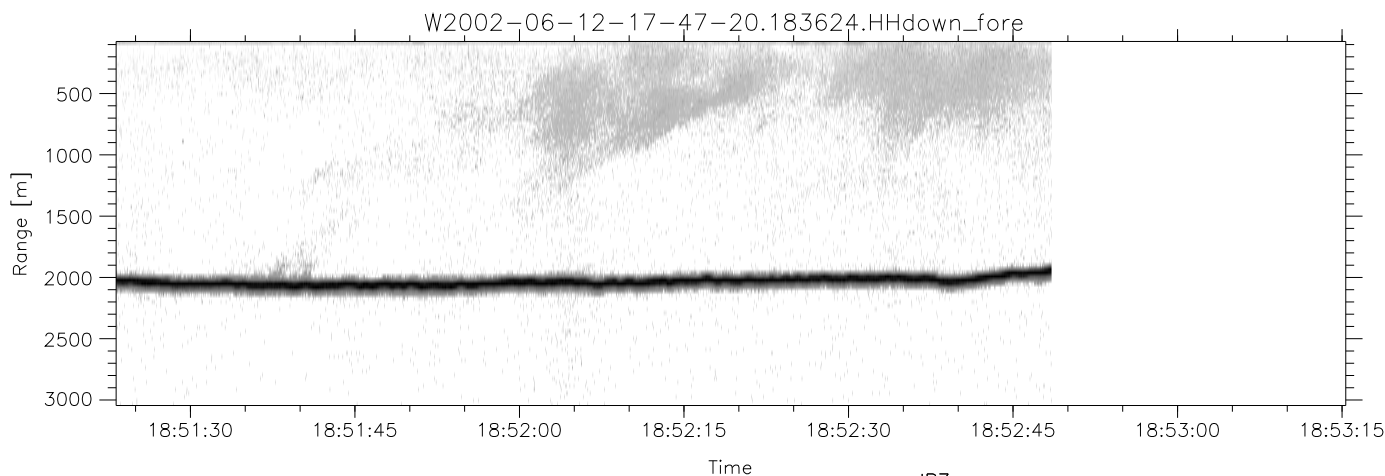
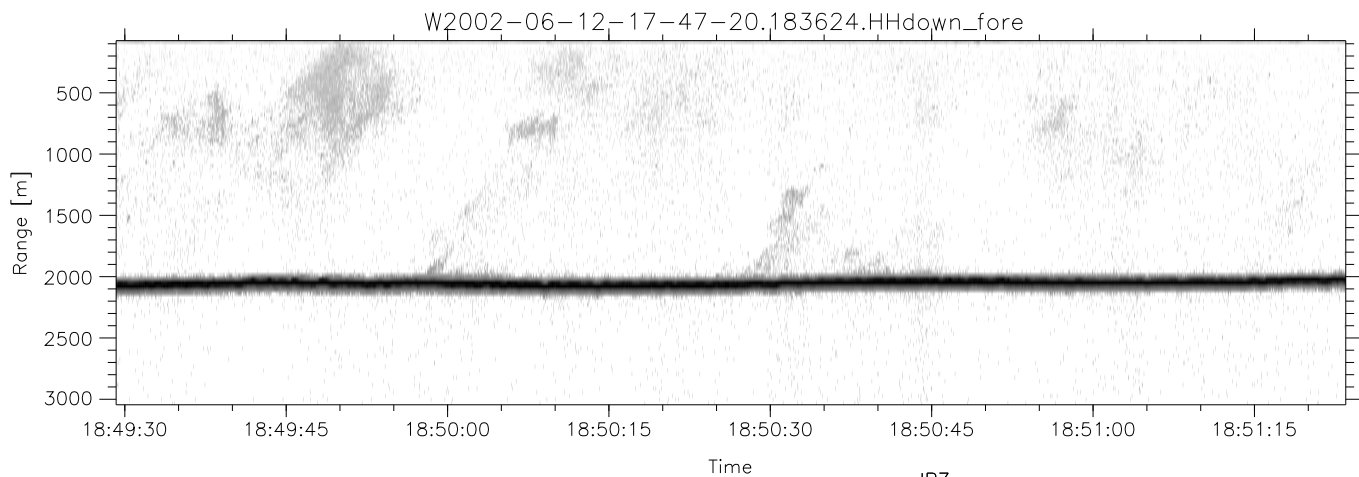
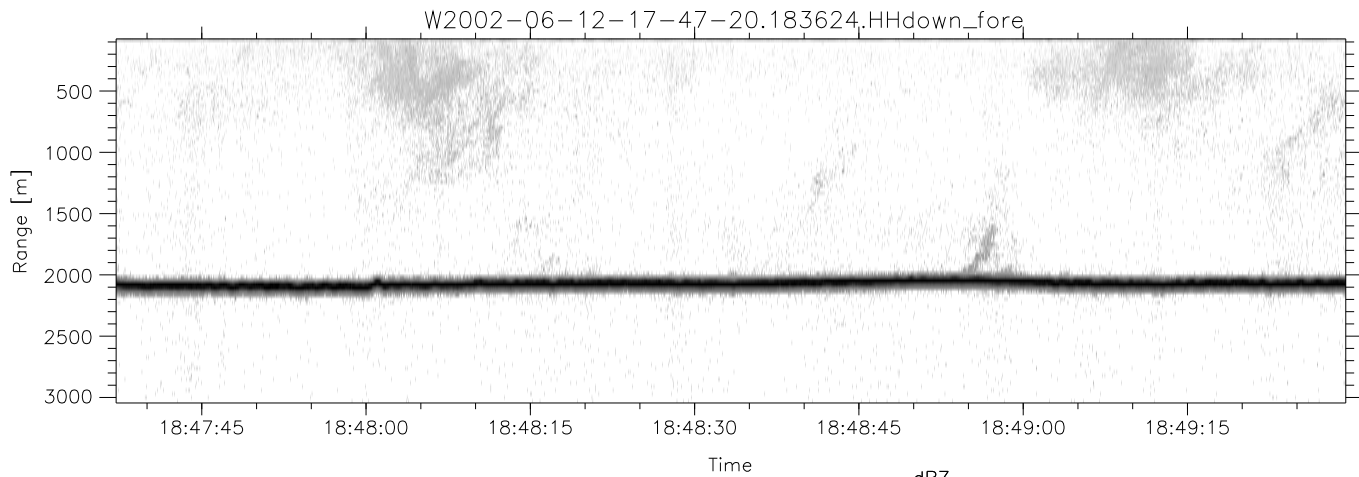
	Min	Max	Mean	Std	Varc%
hhN(dB)	-69.04	-65.66	-67.20	-77.09	10.3
vvN(dB)	-70.00	-65.96	-67.72	-77.56	10.4
hhL(dB)	-29.48	-9.24	-18.24	-19.22	80.0
vvL(dB)	-13.07	-5.65	-9.16	-16.38	18.9
ppN(m/s)	-12.51	12.60	-0.05	4.10	
ppT(m/s)	-98.85	99.55	-0.39	32.38	
hh/vv(dB)	-NaN	100.39	50.91	76.00	3232
vh/hh(dB)	-NaN	-29.61	-50.11	-42.92	522.
hv/vv(dB)	-NaN	-36.28	-53.13	-47.90	333.
hnjmp(dB)	-2.22	2.48	0.20	-8.25	14.3
vnjmp(dB)	-2.27	3.05	0.22	-8.23	14.3



IHOP 2002 (dual-antenna config, modes 1,3,4,7) Data (cal: 55.0,50.0)

W2002-06-12-17-47-20 - PPMAG4
 IRIG:0,Time: 17:47:19.79 to 19:08:44.20, Dur: 4885s
 TimeLngth: 4884.41s, TimeInt: 28ms (34.7pps)
 TimeCor=0.0s, DSPDif(mn,min,mx):28,28,496
 PPS(min,max,std): 19,36,2.36
 Prof: 617 to 170097, NumProf(t/r): 169480/34138
 ProcTime/Recs: 18:36:24-18:52:48/102414-136551
 MxACQtime: 33ms; DRate: 194.2KB/s; Flags: 0, 0, 0
 Pulse: 275ns, IFfilt: 5.0MHz; ppPol: HH HV VV
 TxPol: HHVV, PRF: 20 10 20 10 kHz
 Range: Delay 75m, Spacing 30m, Gates 100
 Ave. Pulses: 84, Rng/Prof Aspect@90m/s: 11.6

	Min	Max	Mean	Std	Varc%
hhN (dB)	-69.04	-65.66	-67.20	-77.09	10.3
vvN (dB)	-70.00	-65.96	-67.72	-77.56	10.4
hhL (dB)	-29.48	-9.24	-18.24	-19.22	80.0
vvL (dB)	-13.07	-5.65	-9.16	-16.38	18.9
ppN (m/s)	-12.51	12.60	-0.05	4.10	
ppT (m/s)	-98.85	99.55	-0.39	32.38	
hh/vv (dB)	-NaN	100.39	50.91	76.00	3232
vh/hh (dB)	-NaN	-29.61	-50.11	-42.92	522.
hv/vv (dB)	-NaN	-36.28	-53.13	-47.90	333.
hnjmp (dB)	-2.22	2.48	0.20	-8.25	14.3
vnjmp (dB)	-2.27	3.05	0.22	-8.23	14.3



IHOP 2002 (dual-antenna config, modes 1,3,4,7) Data (cal: 55.0,50.0)

W2002-06-12-17-47-20 - PPMAG4
 IRIG:0,Time: 17:47:19.79 to 19:08:44.20, Dur: 4885s
 TimeLngth: 4884.41s, TimeInt: 28ms (34.7pps)
 TimeCor=0.0s, DSPDif(mn,min,mx):28,28,496
 PPS(min,max,std): 19,36,2.36
 Prof: 617 to 170097, NumProf(t/r): 169480/34138
 ProcTime/Recs: 18:36:24-18:52:48/102414-136551
 MxAcQtime: 33ms; DRate: 194.2KB/s; Flags: 0, 0, 0
 Pulse: 275ns, IFfilt: 5.0MHz; ppPol: HH HV VV
 TxPol: HHVV, PRF: 20 10 20 10 kHz
 Range: Delay 75m, Spacing 30m, Gates 100
 Ave. Pulses: 84, Rng/Prof Aspect@90m/s: 11.6

	Min	Max	Mean	Std	Varc%
hhN(dB)	-69.04	-65.66	-67.20	-77.09	10.3
vvN(dB)	-70.00	-65.96	-67.72	-77.56	10.4
hhL(dB)	-29.48	-9.24	-18.24	-19.22	80.0
vvL(dB)	-13.07	-5.65	-9.16	-16.38	18.9
ppN(m/s)	-12.51	12.60	-0.05	4.10	
ppT(m/s)	-98.85	99.55	-0.39	32.38	
hh/vv(dB)	-NaN	100.39	50.91	76.00	3232
vh/hh(dB)	-NaN	-29.61	-50.11	-42.92	522.
hv/vv(dB)	-NaN	-36.28	-53.13	-47.90	333.
hh_jmp(dB)	-2.22	2.48	0.20	-8.25	14.3
vv_jmp(dB)	-2.27	3.05	0.22	-8.23	14.3