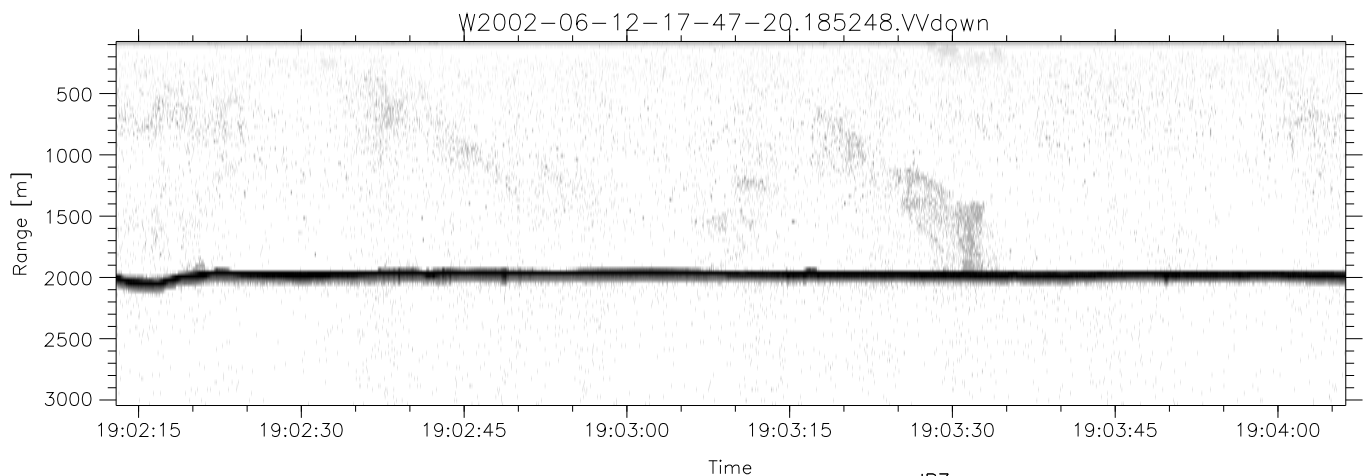
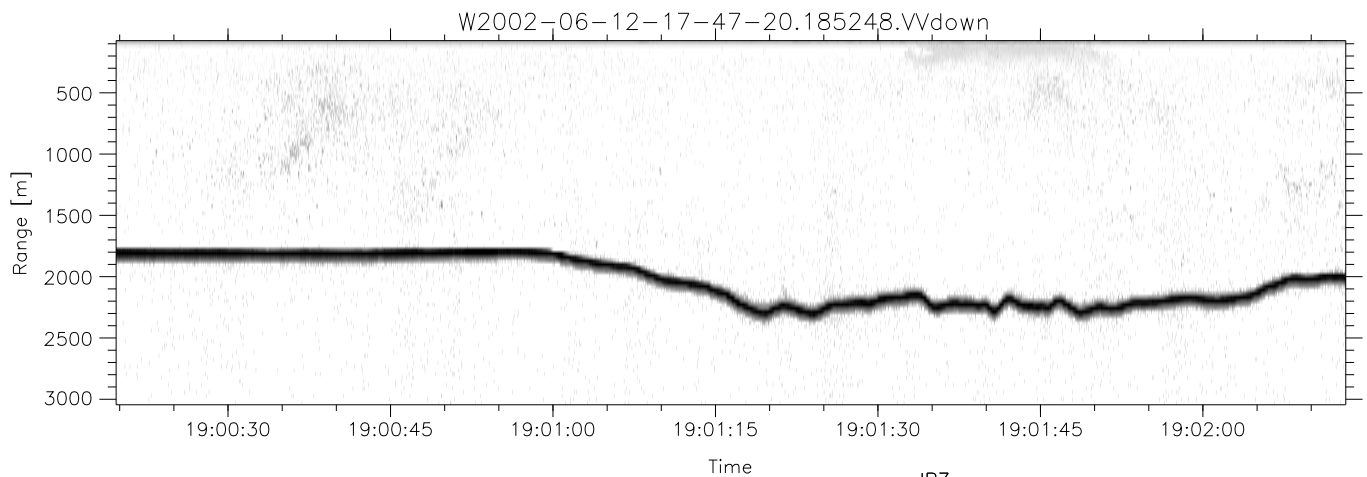
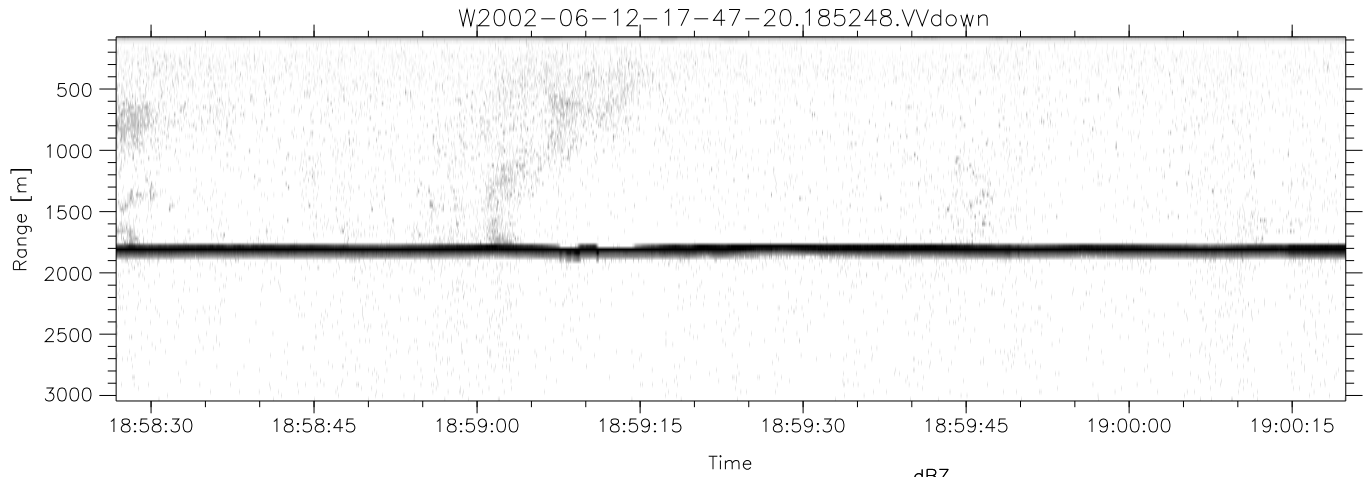


IHOP 2002 (dual-antenna config, modes 1,3,4,7) Data (cal: 55.0,50.0)

W2002-06-12-17-47-20 - PPMAG4
 IRIG:0,Time: 17:47:19.79 to 19:08:44.20, Dur: 4885s
 TimeLngth: 4884.41s, TimeInt: 28ms (34.7pps)
 TimeCor=0.0s, DSPDif(mn,min,mx):29,28,372
 PPS(min,max,std): 24,36,2.20
 Prof: 617 to 170097, NumProf(t/r): 169480/32928
 ProcTime/Recs: 18:52:48-19:08:44/136552-169479
 MxACQtime: 33ms; DRate: 194.2KB/s; Flags: 0, 0, 0
 Pulse: 275ns, IFilt: 5.0MHz; ppPol: HH HV VV
 TxPol: HHVV, PRF: 20 10 20 10 kHz
 Range: Delay 75m, Spacing 30m, Gates 100
 Ave. Pulses: 84, Rng/Prof Aspect@90m/s: 11.6

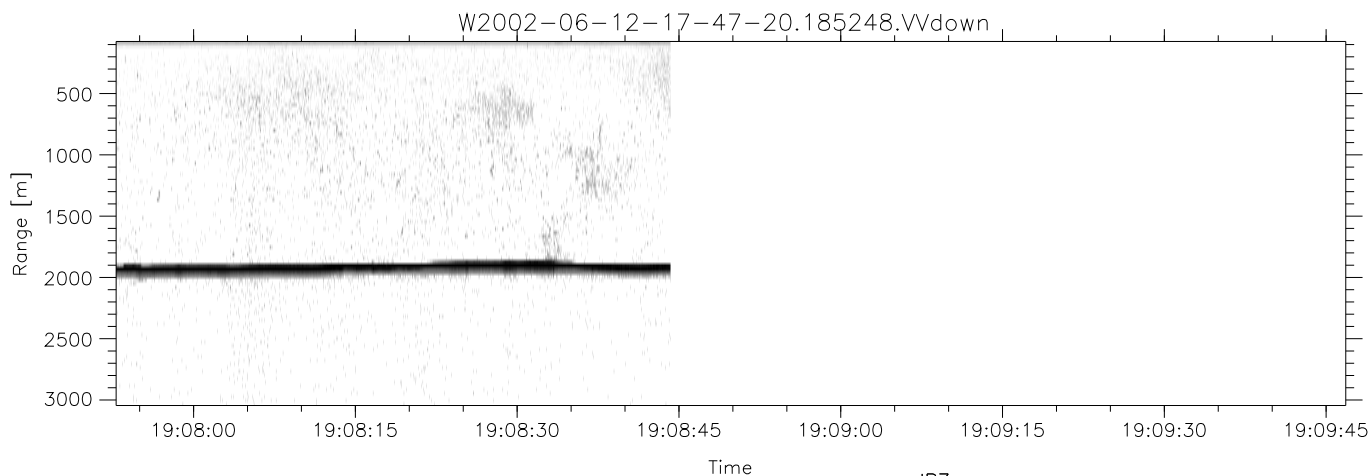
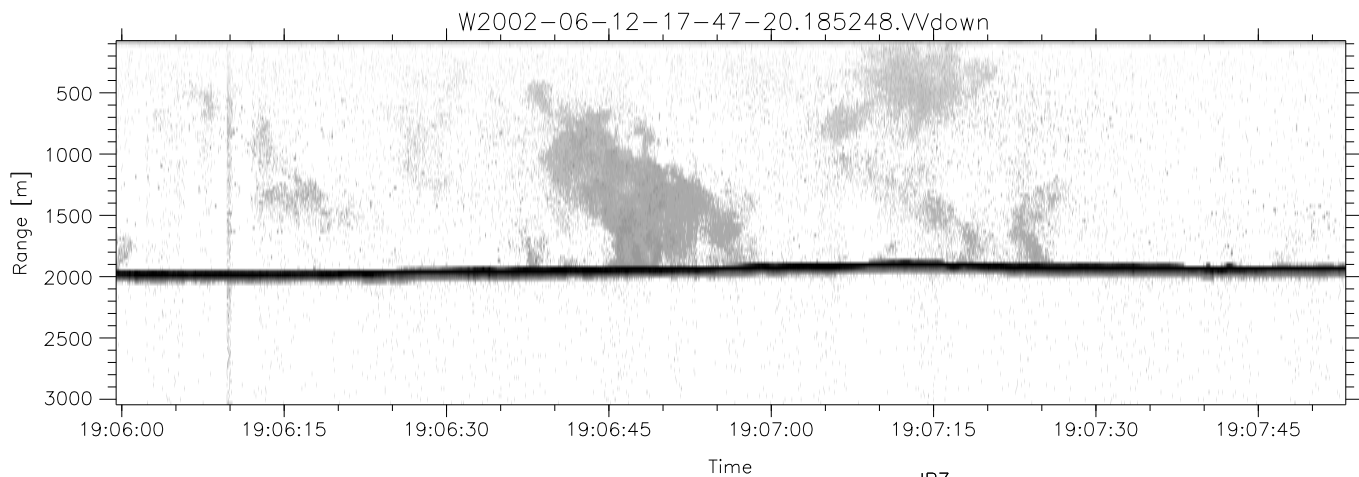
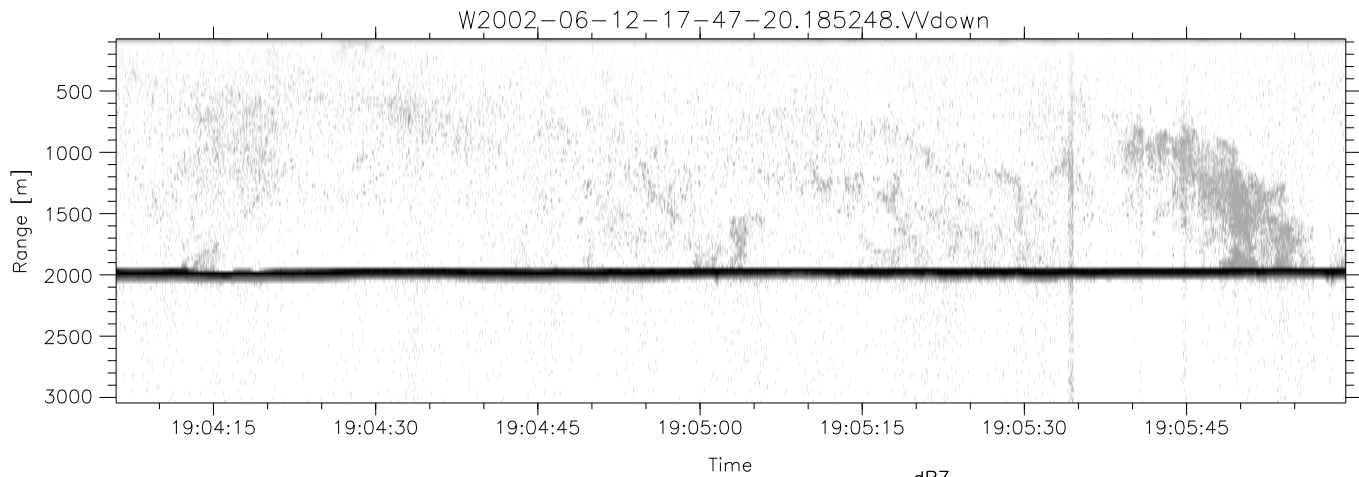
	Min	Max	Mean	Std	Varc%
hhN(dB)	-69.25	-65.48	-67.23	-77.14	10.2
vvN(dB)	-69.73	-65.23	-67.76	-77.46	10.7
hhL(dB)	-29.27	-8.58	-15.94	-17.55	69.0
vvL(dB)	-10.69	-4.53	-8.01	-16.13	15.4
ppN(m/s)	-12.96	12.39	0.03	4.12	
ppT(m/s)	-102.3	97.90	0.26	32.51	
hh/vv(dB)	-NaN	90.17	39.51	71.94	1749
vh/hh(dB)	-NaN	-30.89	-49.91	-42.42	560.
hv/vv(dB)	-NaN	-36.45	-53.27	-47.88	345.
hnjmp(dB)	-2.41	2.32	0.19	-8.26	14.3
vnjmp(dB)	-2.19	2.45	0.21	-8.22	14.3



IHOP 2002 (dual-antenna config, modes 1,3,4,7) Data (cal: 55.0,50.0)

W2002-06-12-17-47-20 - PPMAG4
 IRIG:0,Time: 17:47:19.79 to 19:08:44.20, Dur: 4885s
 TimeLngth: 4884.41s, TimeInt: 28ms (34.7pps)
 TimeCor=0.0s, DSPDif(mn,min,mx):29,28,372
 PPS(min,max,std): 24,36,2.20
 Prof: 617 to 170097, NumProf(t/r): 169480/32928
 ProcTime/Recs: 18:52:48-19:08:44/136552-169479
 MxAcQtime: 33ms; DRate: 194.2KB/s; Flags: 0, 0, 0
 Pulse: 275ns, IFilt: 5.0MHz; ppPol: HH HV VV
 TxPol: HHVV, PRF: 20 10 20 10 kHz
 Range: Delay 75m, Spacing 30m, Gates 100
 Ave. Pulses: 84, Rng/Prof Aspect@90m/s: 11.6

	Min	Max	Mean	Std	Varc%
hhN(dB)	-69.25	-65.48	-67.23	-77.14	10.2
vvN(dB)	-69.73	-65.23	-67.76	-77.46	10.7
hhL(dB)	-29.27	-8.58	-15.94	-17.55	69.0
vvL(dB)	-10.69	-4.53	-8.01	-16.13	15.4
ppN(m/s)	-12.96	12.39	0.03	4.12	
ppT(m/s)	-102.3	97.90	0.26	32.51	
hh/vv(dB)	-NaN	90.17	39.51	71.94	1749
vh/hh(dB)	-NaN	-30.89	-49.91	-42.42	560.
hv/vv(dB)	-NaN	-36.45	-53.27	-47.88	345.
hh_jmp(dB)	-2.41	2.32	0.19	-8.26	14.3
vv_jmp(dB)	-2.19	2.45	0.21	-8.22	14.3



IHOP 2002 (dual-antenna config, modes 1,3,4,7) Data (cal: 55.0,50.0)

W2002-06-12-17-47-20 - PPMAG4
 IRIG:0,Time: 17:47:19.79 to 19:08:44.20, Dur: 4885s
 TimeLngth: 4884.41s, TimeInt: 28ms (34.7pps)
 TimeCor=0.0s, DSPDif(mn,min,mx):29,28,372
 PPS(min,max,std): 24,36,2.20
 Prof: 617 to 170097, NumProf(t/r): 169480/32928
 ProcTime/Recs: 18:52:48-19:08:44/136552-169479
 MxACQtime: 33ms; DRate: 194.2KB/s; Flags: 0, 0, 0
 Pulse: 275ns, IFilt: 5.0MHz; ppPol: HH HV VV
 TxPol: HHVV, PRF: 20 10 20 10 kHz
 Range: Delay 75m, Spacing 30m, Gates 100
 Ave. Pulses: 84, Rng/Prof Aspect@90m/s: 11.6

	Min	Max	Mean	Std	Varc%
hhN(dB)	-69.25	-65.48	-67.23	-77.14	10.2
vvN(dB)	-69.73	-65.23	-67.76	-77.46	10.7
hhL(dB)	-29.27	-8.58	-15.94	-17.55	69.0
vvL(dB)	-10.69	-4.53	-8.01	-16.13	15.4
ppN(m/s)	-12.96	12.39	0.03	4.12	
ppT(m/s)	-102.3	97.90	0.26	32.51	
hh/vv(dB)	-NaN	90.17	39.51	71.94	1749
vh/hh(dB)	-NaN	-30.89	-49.91	-42.42	560.
hv/vv(dB)	-NaN	-36.45	-53.27	-47.88	345.
hnjmp(dB)	-2.41	2.32	0.19	-8.26	14.3
vnjmp(dB)	-2.19	2.45	0.21	-8.22	14.3