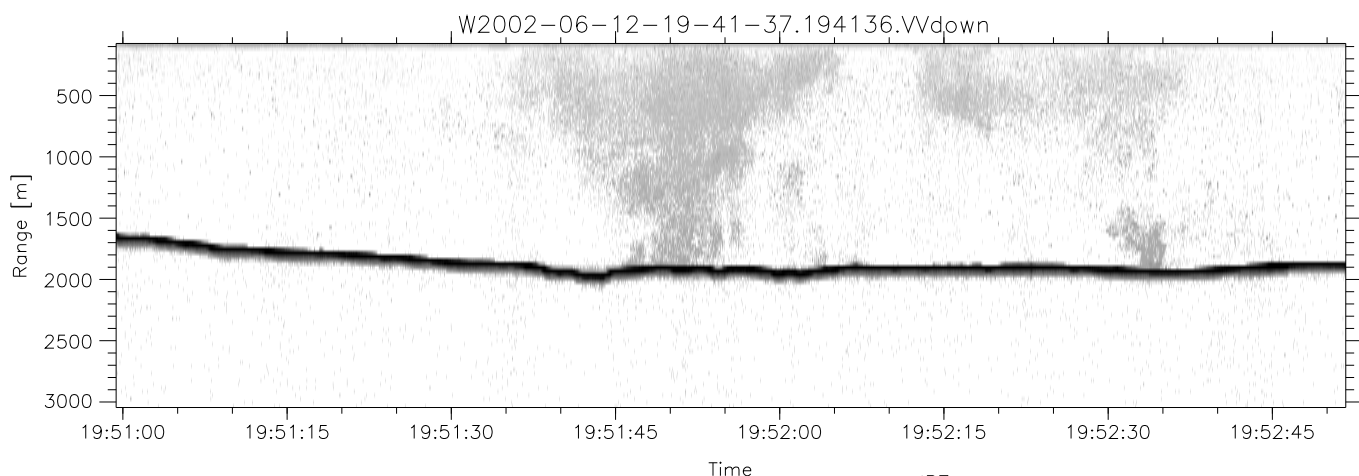
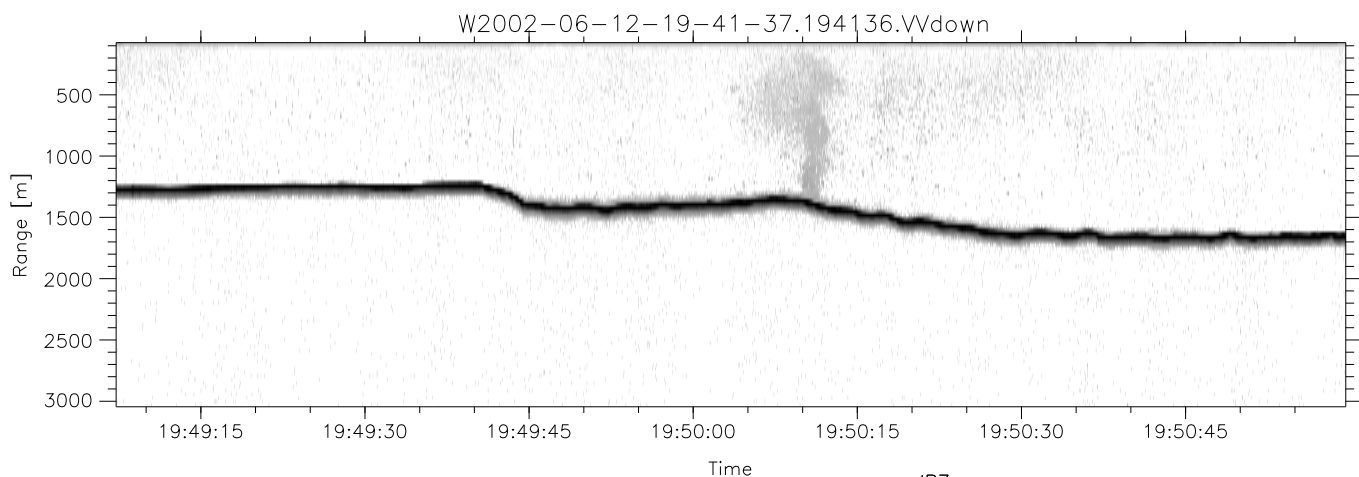
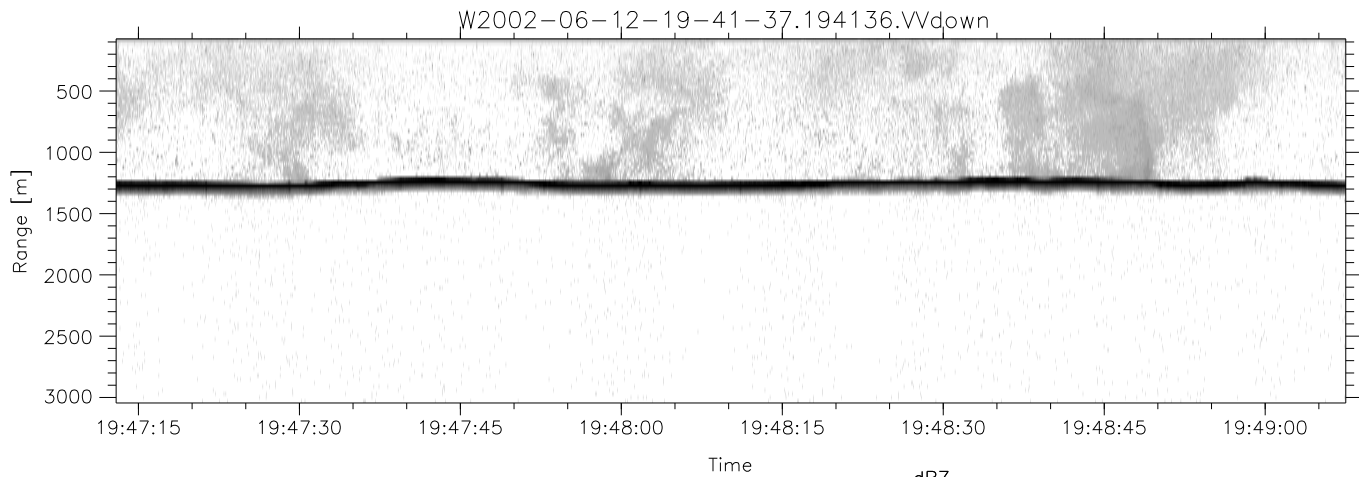


IHOP 2002 (dual-antenna config, modes 1,3,4,7) Data (cal: 55.0,50.0)

W2002-06-12-19-41-37 - PPMAG4
 IRIG:0,Time: 19:41:36.37 to 20:25:39.10, Dur: 2643s
 TimeLngth: 2642.73s, TimeInt: 29ms (34.2pps)
 TimeCor=0.0s, DSPDif(mn,min,mx):29,28,412
 PPS(min,max,std): 15,36,2.45
 Prof: 385 to 90890, NumProf(t/r): 90505/34138
 ProcTime/Recs: 19:41:36-19:58:14/0-34137
 MxACQtime: 33ms; DRate: 191.7KB/s; Flags: 0, 0, 0
 Pulse: 275ns, IFilt: 5.0MHz; ppPol: HH HV VV
 TxPol: HHVV, PRF: 20 10 20 10 kHz
 Range: Delay 75m, Spacing 30m, Gates 100
 Ave. Pulses: 84, Rng/Prof Aspect@90m/s: 11.4

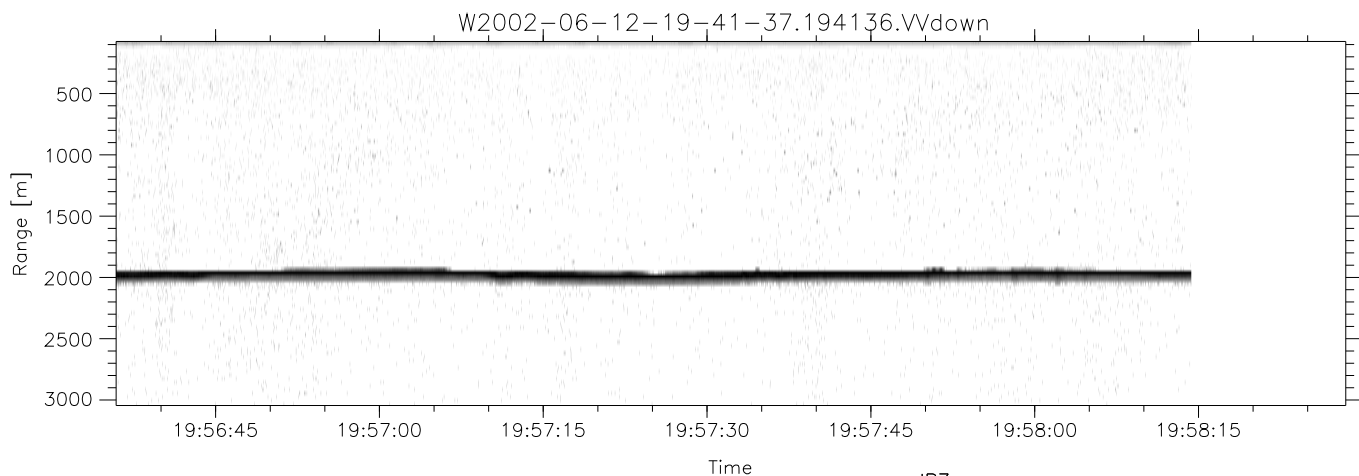
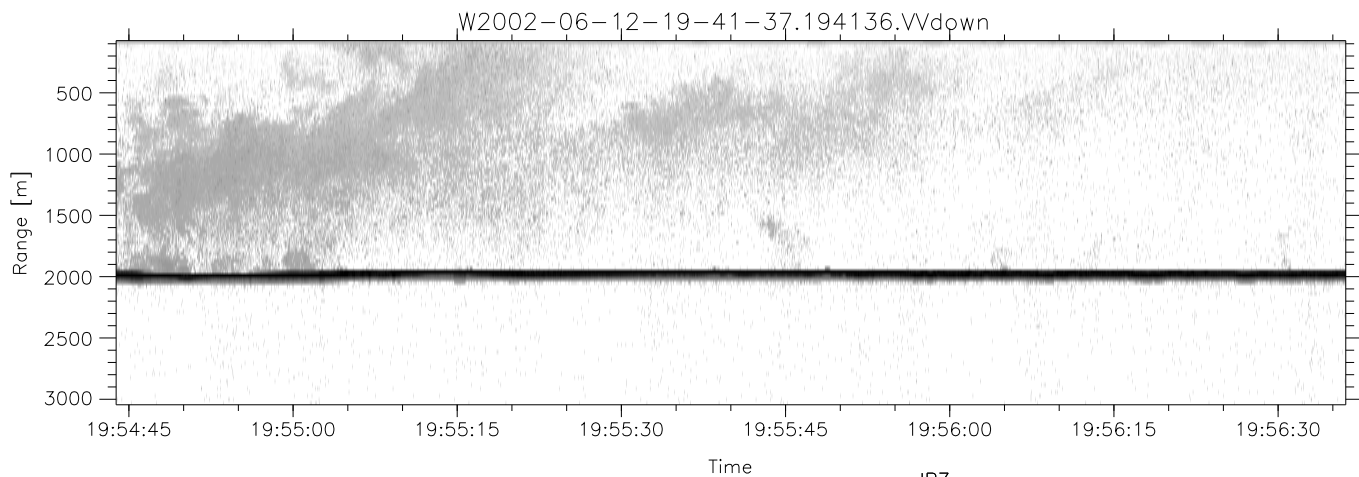
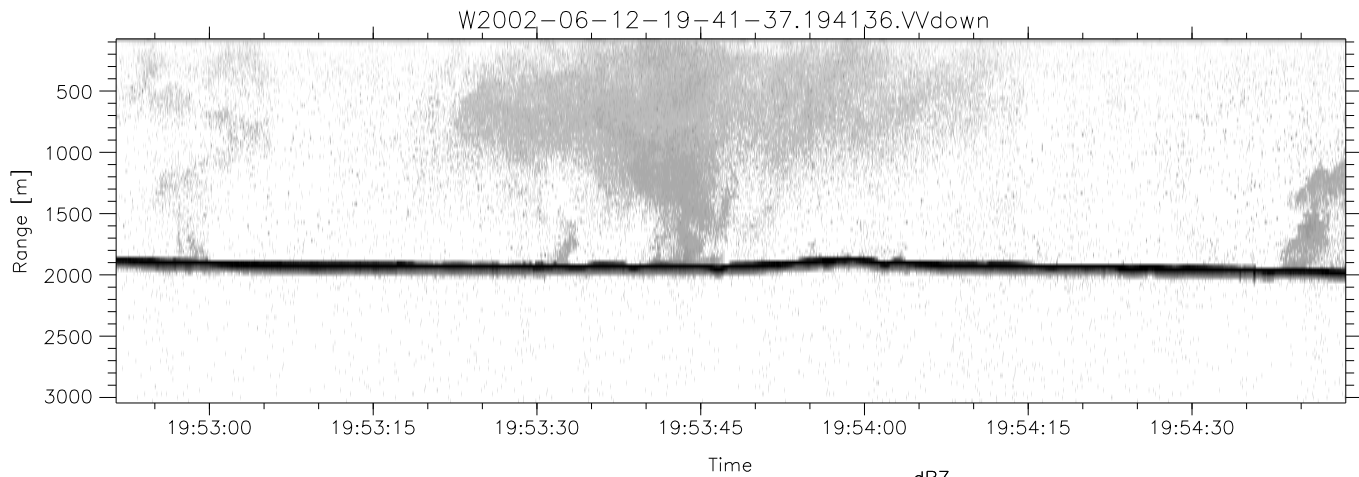
	Min	Max	Mean	Std	Varc%
hhN(dB)	-69.46	-64.98	-67.28	-76.43	12.2
vvN(dB)	-70.09	-66.32	-68.12	-77.96	10.4
hhL(dB)	-22.68	-5.63	-11.44	-13.39	63.8
vvL(dB)	-17.99	-4.00	-9.94	-15.17	29.9
ppN(m/s)	-12.89	12.71	-0.07	4.12	
ppT(m/s)	-101.8	100.40	-0.58	32.59	
hh/vv(dB)	-NaN	96.39	43.86	74.90	1271
vh/hh(dB)	-NaN	-31.97	-50.93	-43.49	554.
hv/vv(dB)	-NaN	-35.07	-53.80	-47.00	478.
hnjmp(dB)	-2.30	2.58	0.21	-8.19	14.4
vnjmp(dB)	-2.36	2.60	0.23	-8.18	14.4



IHOP 2002 (dual-antenna config, modes 1,3,4,7) Data (cal: 55.0,50.0)

W2002-06-12-19-41-37 - PPMAG4
 IRIG:0,Time: 19:41:36.37 to 20:25:39.10, Dur: 2643s
 TimeLngth: 2642.73s, TimeInt: 29ms (34.2pps)
 TimeCor=0.0s, DSPDif(mn,min,mx):29,28,412
 PPS(min,max,std): 15,36,2.45
 Prof: 385 to 90890, NumProf(t/r): 90505/34138
 ProcTime/Recs: 19:41:36-19:58:14/0-34137
 MxACQtime: 33ms; DRate: 191.7KB/s; Flags: 0, 0, 0
 Pulse: 275ns, IFilt: 5.0MHz; ppPol: HH HV VV
 TxPol: HHVV, PRF: 20 10 20 10 kHz
 Range: Delay 75m, Spacing 30m, Gates 100
 Ave. Pulses: 84, Rng/Prof Aspect@90m/s: 11.4

	Min	Max	Mean	Std	Varc%
hhN(dB)	-69.46	-64.98	-67.28	-76.43	12.2
vvN(dB)	-70.09	-66.32	-68.12	-77.96	10.4
hhL(dB)	-22.68	-5.63	-11.44	-13.39	63.8
vvL(dB)	-17.99	-4.00	-9.94	-15.17	29.9
ppN(m/s)	-12.89	12.71	-0.07	4.12	
ppT(m/s)	-101.8	100.40	-0.58	32.59	
hh/vv(dB)	-NaN	96.39	43.86	74.90	1271
vh/hh(dB)	-NaN	-31.97	-50.93	-43.49	554.
hv/vv(dB)	-NaN	-35.07	-53.80	-47.00	478.
hnjmp(dB)	-2.30	2.58	0.21	-8.19	14.4
vnjmp(dB)	-2.36	2.60	0.23	-8.18	14.4



IHOP 2002 (dual-antenna config, modes 1,3,4,7) Data (cal: 55.0,50.0)

W2002-06-12-19-41-37 - PPMAG4
 IRIG:0,Time: 19:41:36.37 to 20:25:39.10, Dur: 2643s
 TimeLngth: 2642.73s, TimeInt: 29ms (34.2pps)
 TimeCor=0.0s, DSPDif(mn,min,mx):29,28,412
 PPS(min,max,std): 15,36,2.45
 Prof: 385 to 90890, NumProf(t/r): 90505/34138
 ProcTime/Recs: 19:41:36-19:58:14/0-34137
 MxACQtime: 33ms; DRate: 191.7KB/s; Flags: 0, 0, 0
 Pulse: 275ns, IFilt: 5.0MHz; ppPol: HH HV VV
 TxPol: HHVV, PRF: 20 10 20 10 kHz
 Range: Delay 75m, Spacing 30m, Gates 100
 Ave. Pulses: 84, Rng/Prof Aspect@90m/s: 11.4

	Min	Max	Mean	Std	Varc%
hhN(dB)	-69.46	-64.98	-67.28	-76.43	12.2
vvN(dB)	-70.09	-66.32	-68.12	-77.96	10.4
hhL(dB)	-22.68	-5.63	-11.44	-13.39	63.8
vvL(dB)	-17.99	-4.00	-9.94	-15.17	29.9
ppN(m/s)	-12.89	12.71	-0.07	4.12	
ppT(m/s)	-101.8	100.40	-0.58	32.59	
hh/vv(dB)	-NaN	96.39	43.86	74.90	1271
vh/hh(dB)	-NaN	-31.97	-50.93	-43.49	554.
hv/vv(dB)	-NaN	-35.07	-53.80	-47.00	478.
hnjmp(dB)	-2.30	2.58	0.21	-8.19	14.4
vnjmp(dB)	-2.36	2.60	0.23	-8.18	14.4