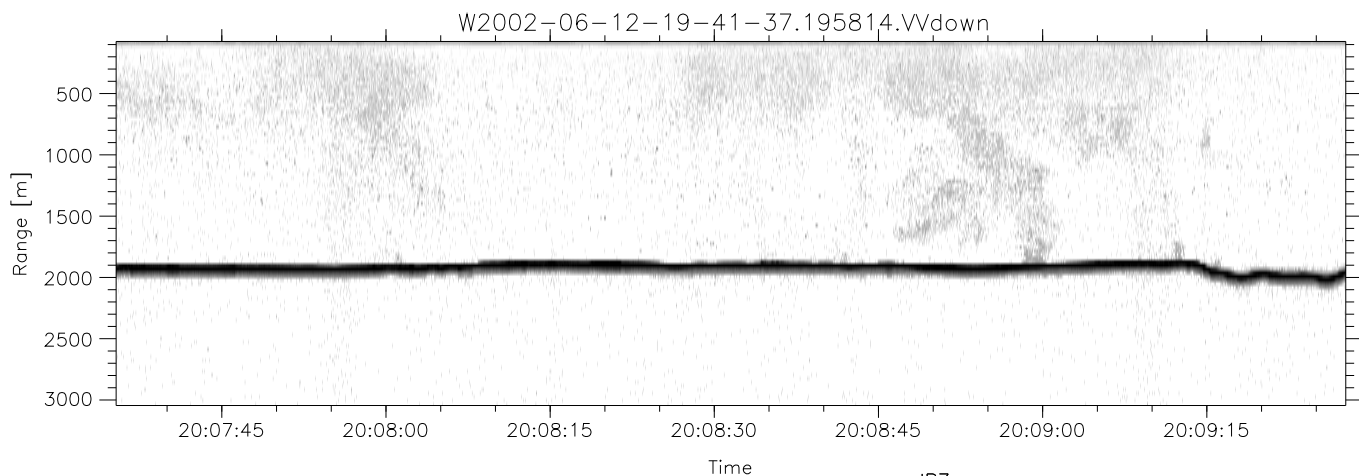
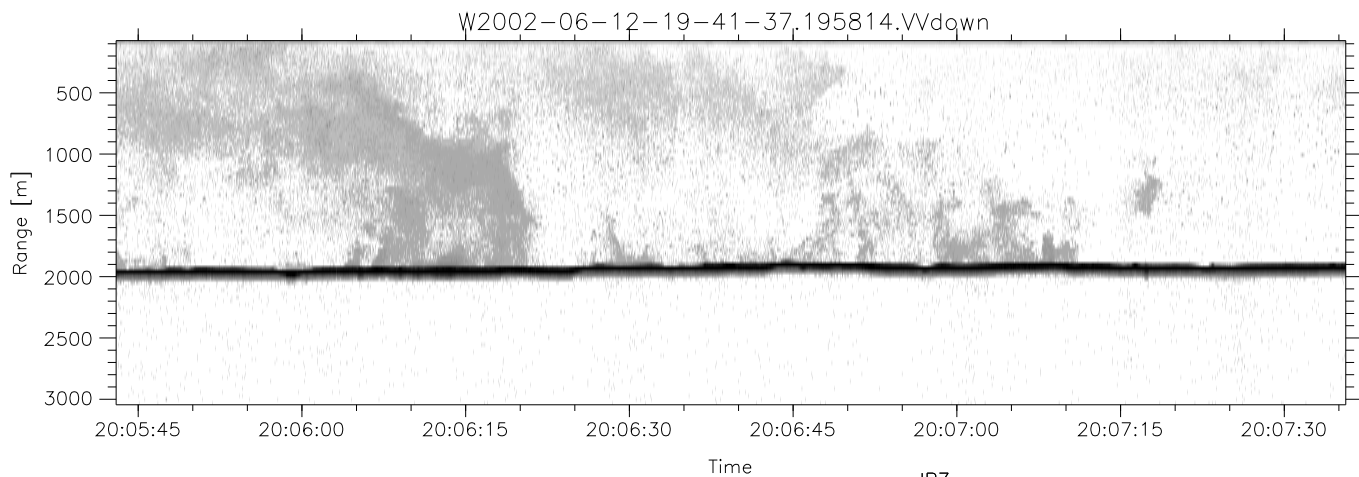
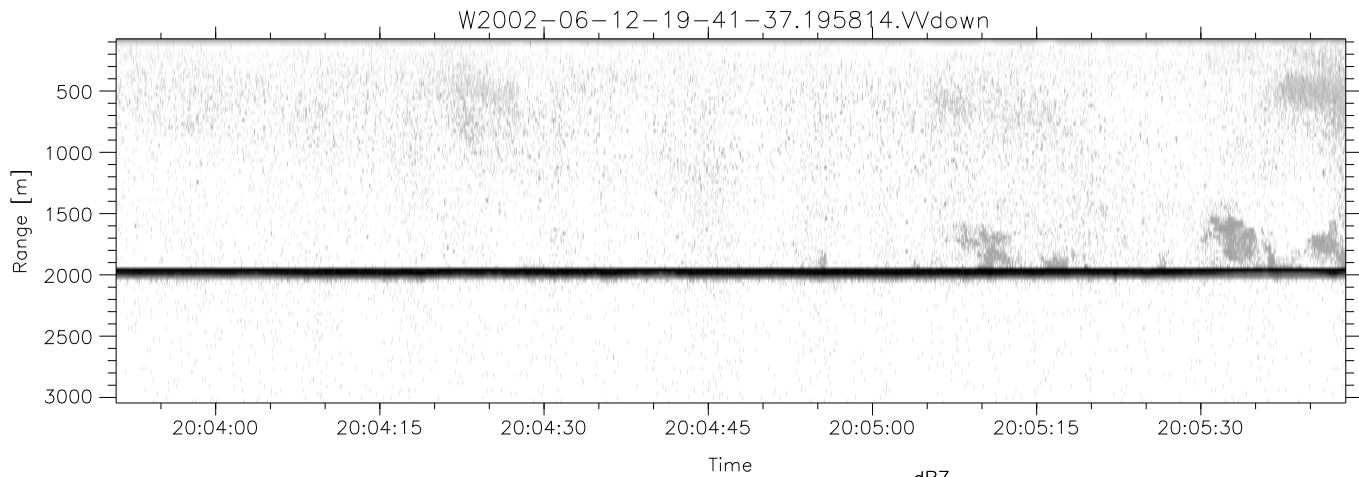


IHOP 2002 (dual-antenna config, modes 1,3,4,7) Data (cal: 55.0,50.0)

W2002-06-12-19-41-37 - PPMAG4  
 IRIG:0,Time: 19:41:36.37 to 20:25:39.10, Dur: 2643s  
 TimeLngth: 2642.73s, TimeInt: 29ms (34.2pps)  
 TimeCor=0.0s, DSPDif(mn,min,mx):29,28,369  
 PPS(min,max,std): 23,36,2.20  
 Prof: 385 to 90890, NumProf(t/r): 90505/34138  
 ProcTime/Recs: 19:58:14-20:14:50/34138-68275  
 MxACQtime: 33ms; DRate: 191.7KB/s; Flags: 0, 0, 0  
 Pulse: 275ns, IFilt: 5.0MHz; ppPol: HH HV VV  
 TxPol: HHVV, PRF: 20 10 20 10 kHz  
 Range: Delay 75m, Spacing 30m, Gates 100  
 Ave. Pulses: 84, Rng/Prof Aspect@90m/s: 11.4

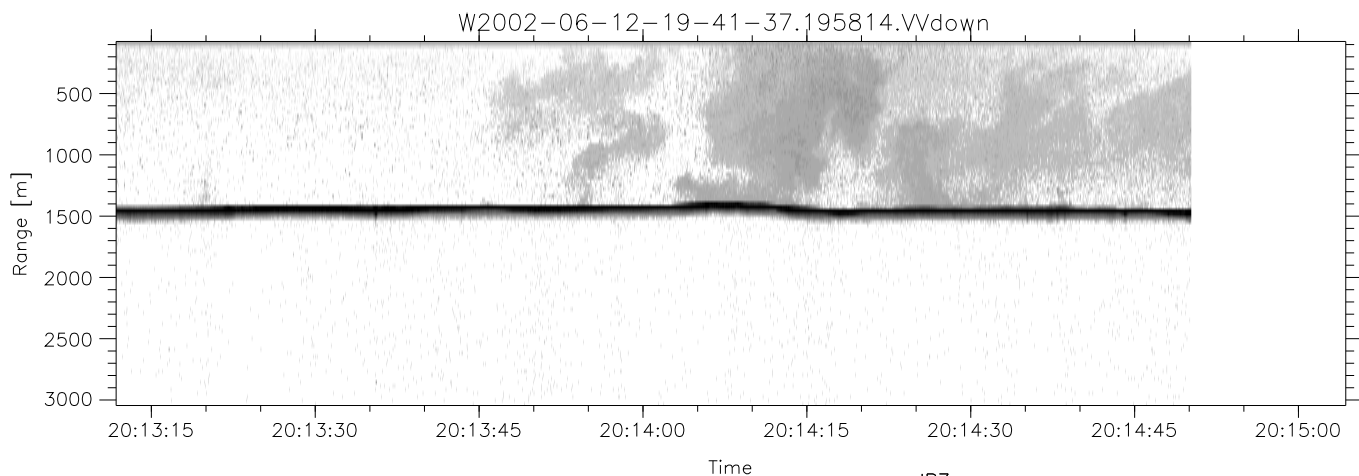
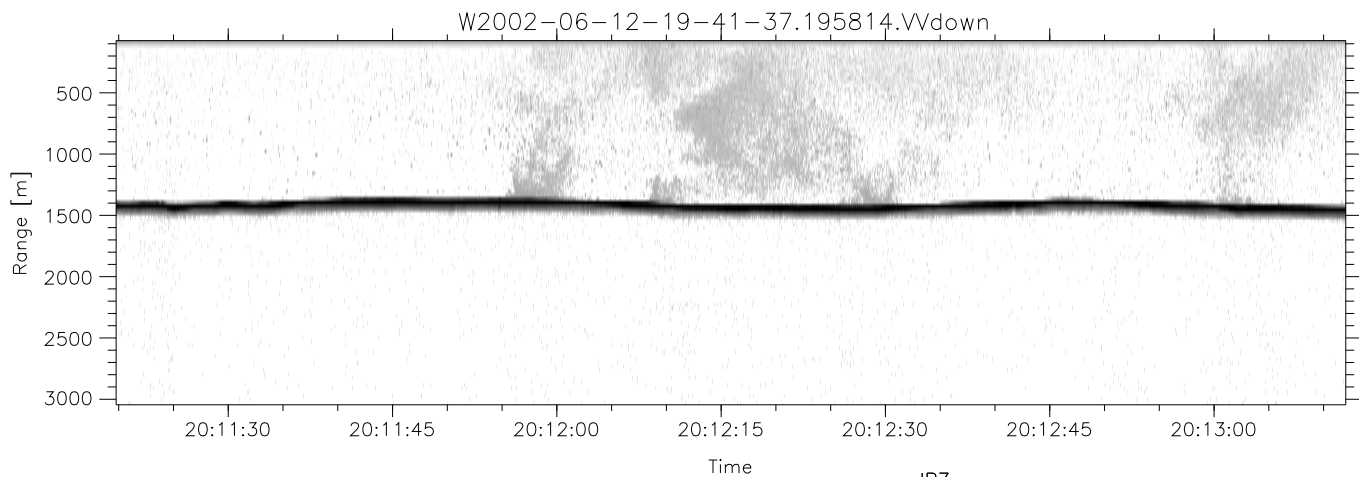
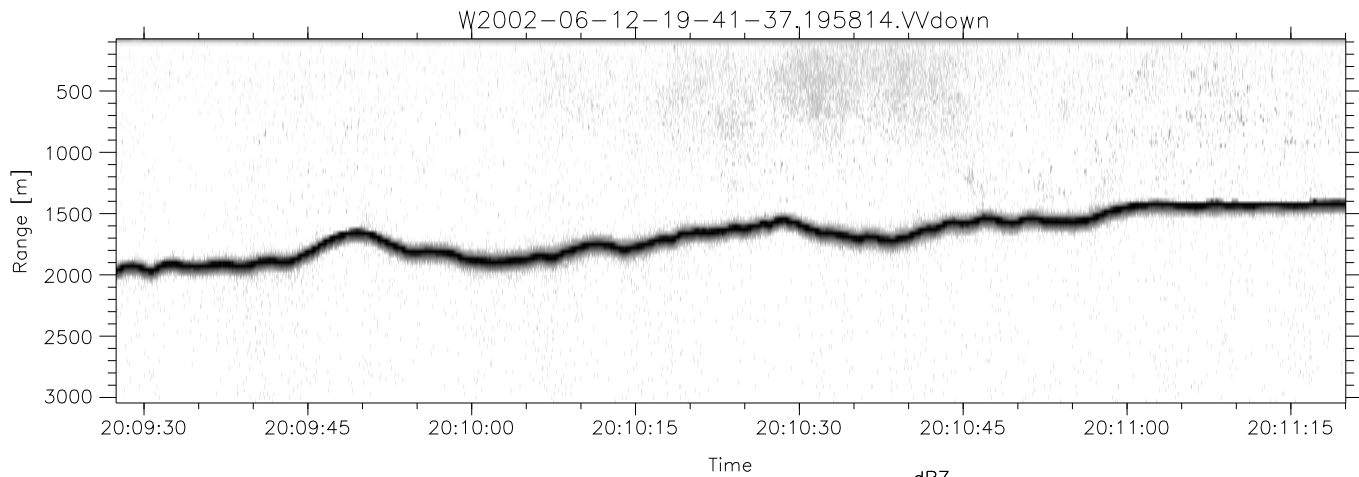
	Min	Max	Mean	Std	Varc%
hhN(dB)	-69.19	-65.42	-67.11	-76.96	10.3
vvN(dB)	-69.96	-66.32	-67.92	-77.60	10.8
hhL(dB)	-29.48	-4.05	-9.09	-10.96	65.1
vvL(dB)	-14.91	-3.29	-7.26	-10.32	49.4
ppN(m/s)	-12.92	12.51	-0.02	4.13	
ppT(m/s)	-102.1	98.85	-0.17	32.64	
hh/vv(dB)	-NaN	91.84	49.03	69.74	1178
vh/hh(dB)	-NaN	-30.85	-51.49	-42.61	771.
hv/vv(dB)	-NaN	-34.62	-54.64	-47.47	520.
hnjmp(dB)	-2.15	2.49	0.17	-8.30	14.2
vnjmp(dB)	-2.29	2.37	0.19	-8.26	14.3



IHOP 2002 (dual-antenna config, modes 1,3,4,7) Data (cal: 55.0,50.0)

W2002-06-12-19-41-37 - PPMAG4  
 IRIG:0,Time: 19:41:36.37 to 20:25:39.10, Dur: 2643s  
 TimeLngth: 2642.73s, TimeInt: 29ms (34.2pps)  
 TimeCor=0.0s, DSPDif(mn,min,mx):29,28,369  
 PPS(min,max,std): 23,36,2.20  
 Prof: 385 to 90890, NumProf(t/r): 90505/34138  
 ProcTime/Recs: 19:58:14-20:14:50/34138-68275  
 MxACQtime: 33ms; DRate: 191.7KB/s; Flags: 0, 0, 0  
 Pulse: 275ns, IFilt: 5.0MHz; ppPol: HH HV VV  
 TxPol: HHVV, PRF: 20 10 20 10 kHz  
 Range: Delay 75m, Spacing 30m, Gates 100  
 Ave. Pulses: 84, Rng/Prof Aspect@90m/s: 11.4

	Min	Max	Mean	Std	Varc%
hhN(dB)	-69.19	-65.42	-67.11	-76.96	10.3
vvN(dB)	-69.96	-66.32	-67.92	-77.60	10.8
hhL(dB)	-29.48	-4.05	-9.09	-10.96	65.1
vvL(dB)	-14.91	-3.29	-7.26	-10.32	49.4
ppN(m/s)	-12.92	12.51	-0.02	4.13	
ppT(m/s)	-102.1	98.85	-0.17	32.64	
hh/vv(dB)	-NaN	91.84	49.03	69.74	1178
vh/hh(dB)	-NaN	-30.85	-51.49	-42.61	771.
hv/vv(dB)	-NaN	-34.62	-54.64	-47.47	520.
hnjmp(dB)	-2.15	2.49	0.17	-8.30	14.2
vnjmp(dB)	-2.29	2.37	0.19	-8.26	14.3



IHOP 2002 (dual-antenna config, modes 1,3,4,7) Data (cal: 55.0,50.0)

W2002-06-12-19-41-37 - PPMAG4  
 IRIG:0,Time: 19:41:36.37 to 20:25:39.10, Dur: 2643s  
 TimeLngth: 2642.73s, TimeInt: 29ms (34.2pps)  
 TimeCor=0.0s, DSPDif(mn,min,mx):29,28,369  
 PPS(min,max,std): 23,36,2.20  
 Prof: 385 to 90890, NumProf(t/r): 90505/34138  
 ProcTime/Recs: 19:58:14-20:14:50/34138-68275  
 MxACQtime: 33ms; DRate: 191.7KB/s; Flags: 0, 0, 0  
 Pulse: 275ns, IFilt: 5.0MHz; ppPol: HH HV VV  
 TxPol: HHVV, PRF: 20 10 20 10 kHz  
 Range: Delay 75m, Spacing 30m, Gates 100  
 Ave. Pulses: 84, Rng/Prof Aspect@90m/s: 11.4

	Min	Max	Mean	Std	Varc%
hhN(dB)	-69.19	-65.42	-67.11	-76.96	10.3
vvN(dB)	-69.96	-66.32	-67.92	-77.60	10.8
hhL(dB)	-29.48	-4.05	-9.09	-10.96	65.1
vvL(dB)	-14.91	-3.29	-7.26	-10.32	49.4
ppN(m/s)	-12.92	12.51	-0.02	4.13	
ppT(m/s)	-102.1	98.85	-0.17	32.64	
hh/vv(dB)	-NaN	91.84	49.03	69.74	1178
vh/hh(dB)	-NaN	-30.85	-51.49	-42.61	771.
hv/vv(dB)	-NaN	-34.62	-54.64	-47.47	520.
hnjmp(dB)	-2.15	2.49	0.17	-8.30	14.2
vnjmp(dB)	-2.29	2.37	0.19	-8.26	14.3