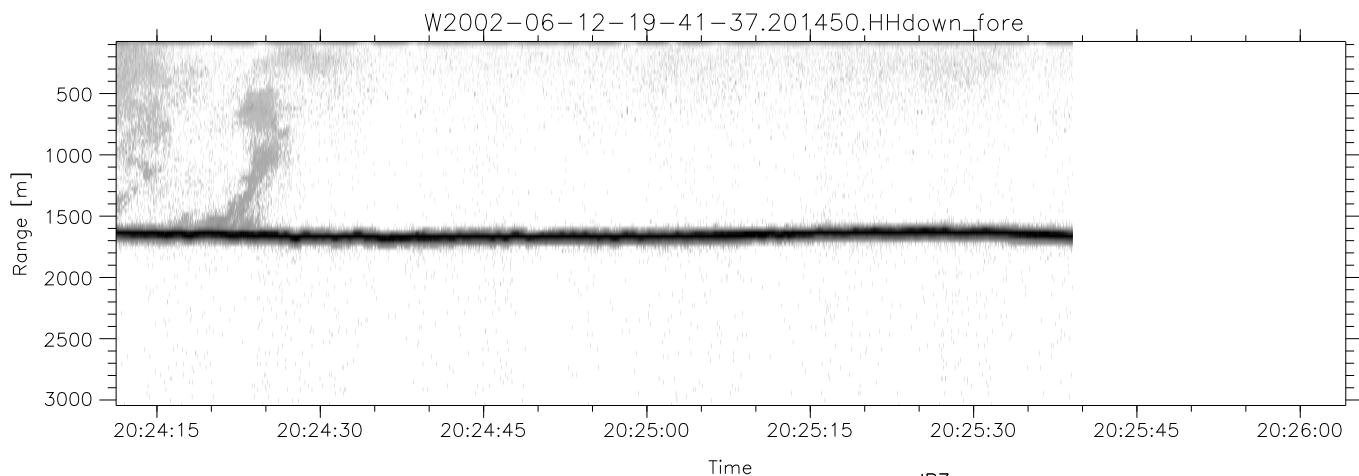
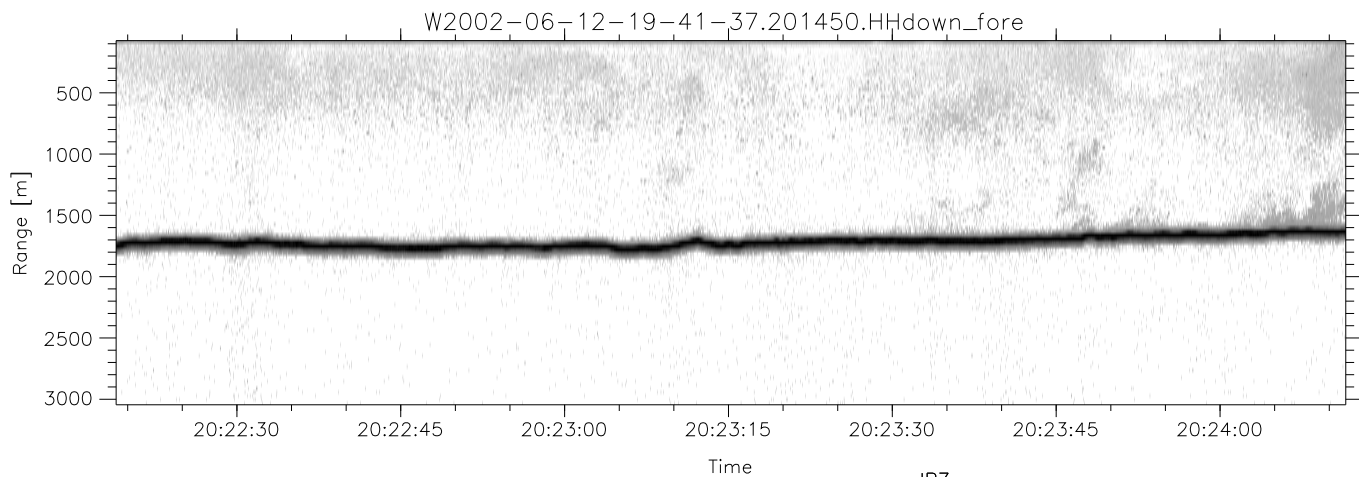
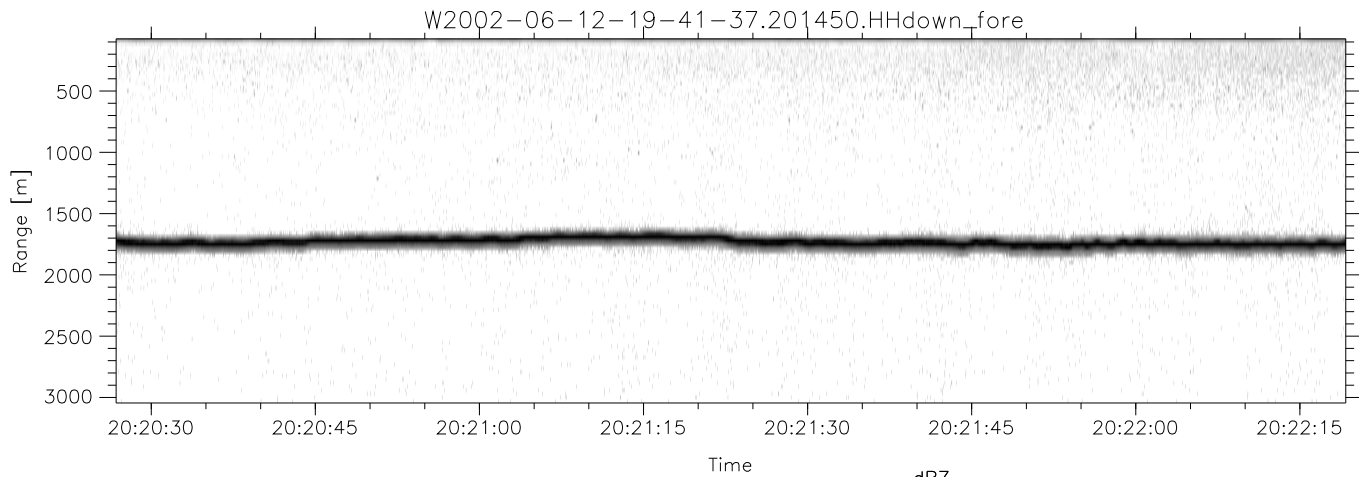


IHOP 2002 (dual-antenna config, modes 1,3,4,7) Data (cal: 55.0,50.0)

W2002-06-12-19-41-37 - PPMAG4
 IRIG:0,Time: 19:41:36.37 to 20:25:39.10, Dur: 2643s
 TimeLngth: 2642.73s, TimeInt: 29ms (34.2pps)
 TimeCor=0.0s, DSPDif(mn,min,mx):29,28,374
 PPS(min,max,std): 23,36,2.31
 Prof: 385 to 90890, NumProf(t/r): 90505/22229
 ProcTime/Recs: 20:14:50-20:25:39/68276-90504
 MxACQtime: 33ms; DRate: 191.7KB/s; Flags: 0, 0, 0
 Pulse: 275ns, IFilt: 5.0MHz; ppPol: HH HV VV
 TxPol: HHVV, PRF: 20 10 20 10 kHz
 Range: Delay 75m, Spacing 30m, Gates 100
 Ave. Pulses: 84, Rng/Prof Aspect@90m/s: 11.4

	Min	Max	Mean	Std	Varc%
hhN(dB)	-68.88	-65.15	-66.84	-76.75	10.2
vvN(dB)	-69.74	-65.91	-67.54	-77.30	10.6
hhL(dB)	-24.56	-4.07	-6.87	-12.31	28.6
vvL(dB)	-14.32	-3.30	-4.99	-11.98	20.0
ppN(m/s)	-12.27	12.72	0.00	4.14	
ppT(m/s)	-96.90	100.49	0.01	32.71	
hh/vv(dB)	-NaN	97.91	49.83	74.24	2759
vh/hh(dB)	-NaN	-31.84	-49.62	-42.65	498.
hv/vv(dB)	-NaN	-35.36	-53.87	-47.67	417.
hh_jmp(dB)	-1.97	2.31	0.18	-8.32	14.1
vv_jmp(dB)	-2.22	2.27	0.18	-8.30	14.2



IHOP 2002 (dual-antenna config, modes 1,3,4,7) Data (cal: 55.0,50.0)

W2002-06-12-19-41-37 - PPMAG4
 IRIG:0,Time: 19:41:36.37 to 20:25:39.10, Dur: 2643s
 TimeLngth: 2642.73s, TimeInt: 29ms (34.2pps)
 TimeCor=0.0s, DSPDif(mn,min,mx):29,28,374
 PPS(min,max,std): 23,36,2.31
 Prof: 385 to 90890, NumProf(t/r): 90505/22229
 ProcTime/Recs: 20:14:50-20:25:39/68276-90504
 MxACQtime: 33ms; DRate: 191.7KB/s; Flags: 0, 0, 0
 Pulse: 275ns, IFfilt: 5.0MHz; ppPol: HH HV VV
 TxPol: HHVV, PRF: 20 10 20 10 kHz
 Range: Delay 75m, Spacing 30m, Gates 100
 Ave. Pulses: 84, Rng/Prof Aspect@90m/s: 11.4

	Min	Max	Mean	Std	Varc%
hhN(dB)	-68.88	-65.15	-66.84	-76.75	10.2
vvN(dB)	-69.74	-65.91	-67.54	-77.30	10.6
hhL(dB)	-24.56	-4.07	-6.87	-12.31	28.6
vvL(dB)	-14.32	-3.30	-4.99	-11.98	20.0
ppN(m/s)	-12.27	12.72	0.00	4.14	
ppT(m/s)	-96.90	100.49	0.01	32.71	
hh/vv(dB)	-NaN	97.91	49.83	74.24	2759
vh/hh(dB)	-NaN	-31.84	-49.62	-42.65	498.
hv/vv(dB)	-NaN	-35.36	-53.87	-47.67	417.
hh_jmp(dB)	-1.97	2.31	0.18	-8.32	14.1
vv_jmp(dB)	-2.22	2.27	0.18	-8.30	14.2