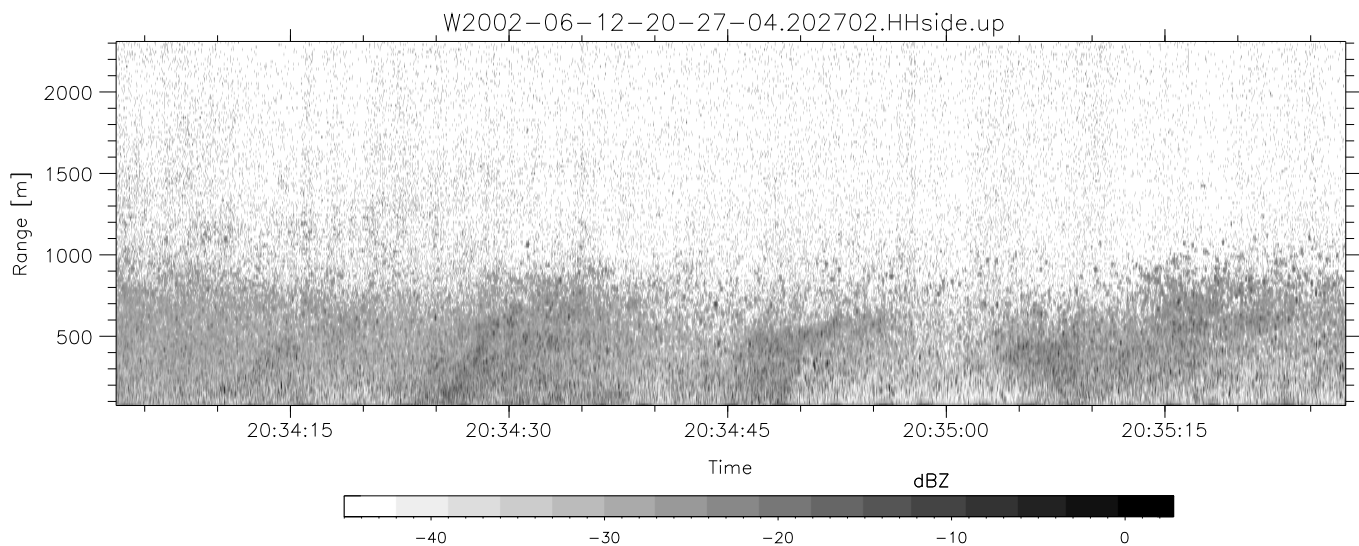
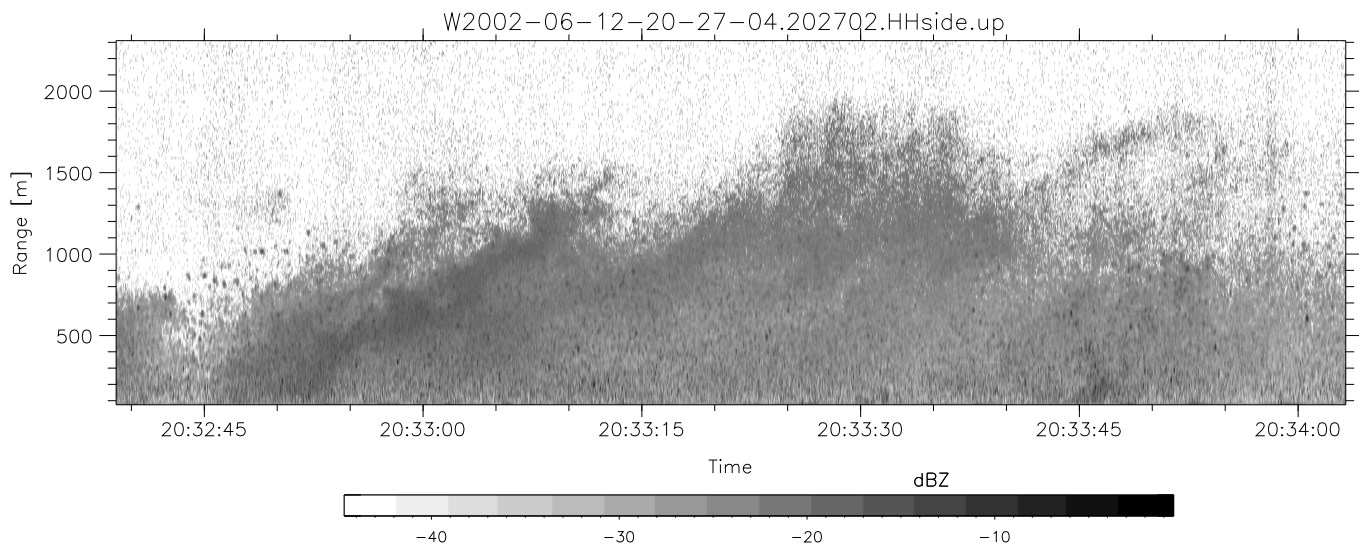
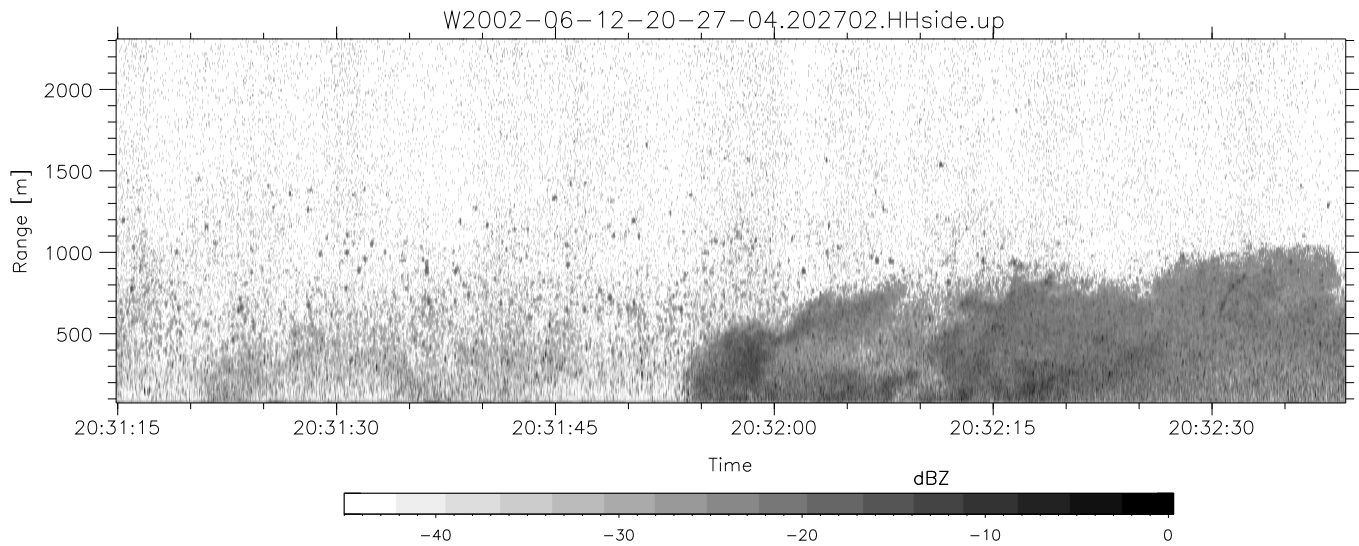


IHOP 2002 (dual-antenna config, modes 1,3,4,7) Data (cal: 49.0,50.0)

W2002-06-12-20-27-04 - SPPMAG
 IRIG:0,Time: 20:27:02.44 to 20:52:17.03, Dur: 1515s
 TimeLngth: 1514.59s, TimeInt: 24ms (40.6pps)
 TimeCor=0.0s, DSPDif(mn,min,mx):24,20,449
 PPS(min,max,std): 24,42,2.43
 Prof: 674 to 62217, NumProf(t/r): 61543/30122
 ProcTime/Recs: 20:27:02-20:39:23/0-30121
 MxACQtime: 17ms; DRate: 97.3KB/s; Flags: 0, 0, 0
 Pulse: 275ns, IFfilt: 5.0MHz; ppPol: HH
 TxPol: H, PRF: 20 kHz
 Range: Delay 75m, Spacing 15m, Gates 150
 Ave. Pulses: 348, Rng/Prof Aspect@90m/s: 6.8

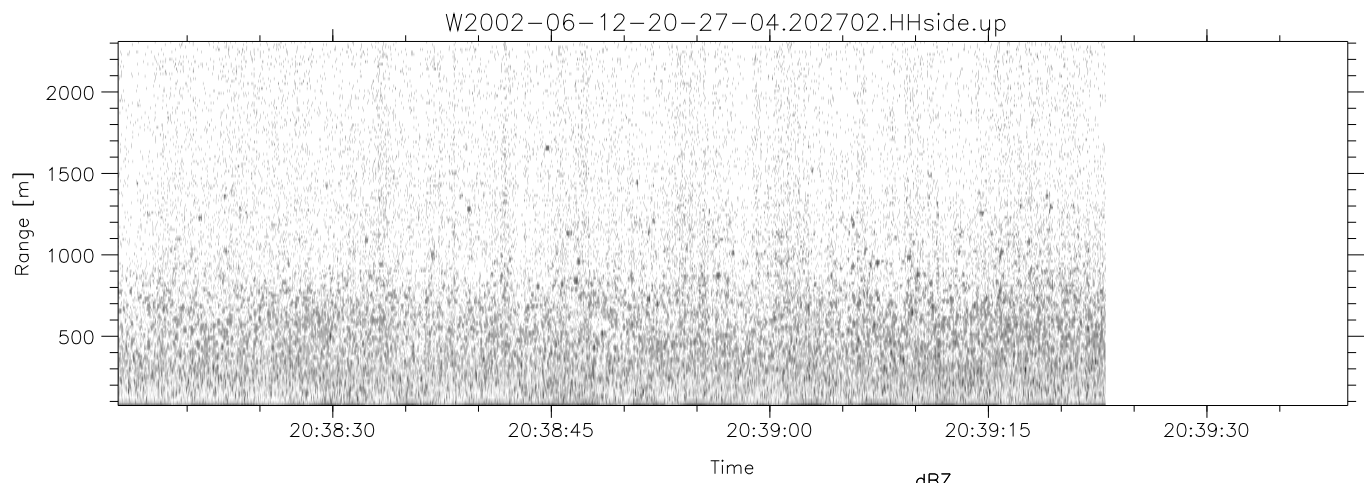
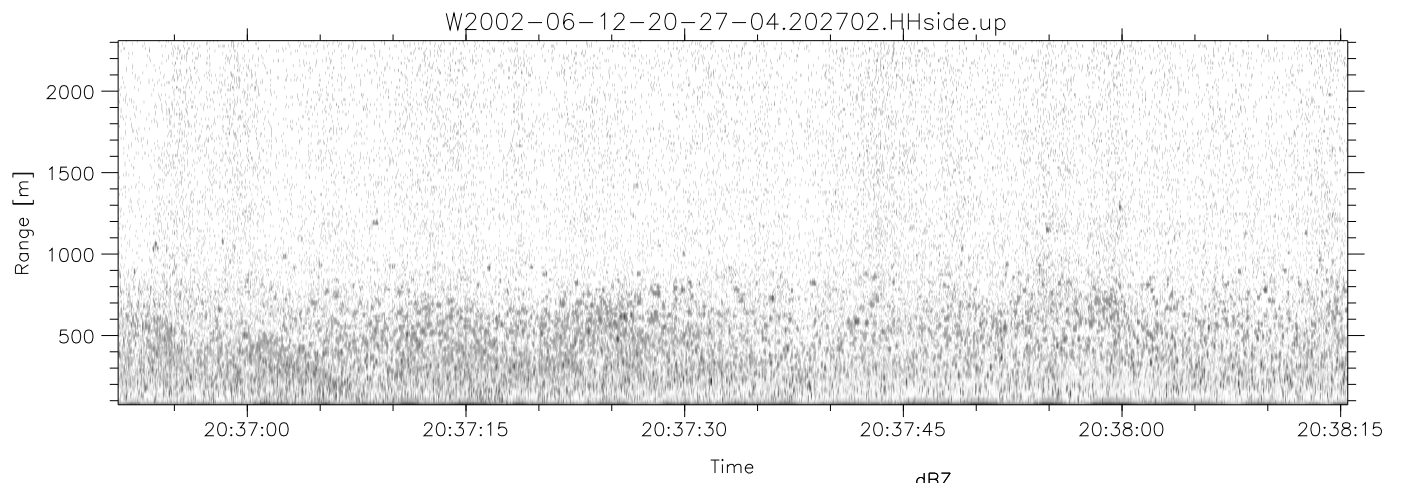
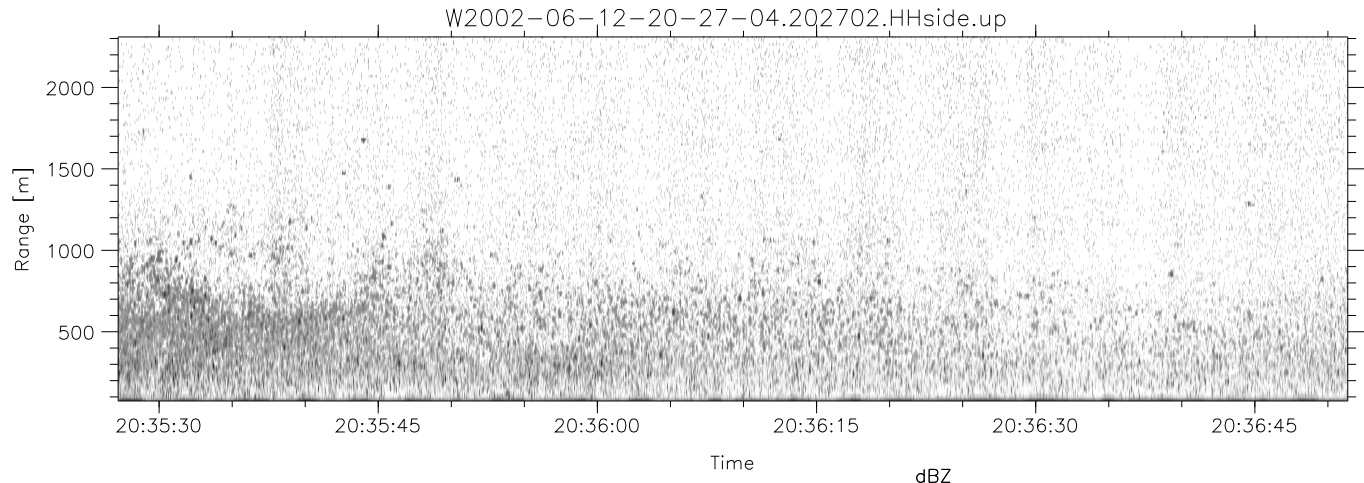
	Min	Max	Mean	Std	Varc%
hhN (dB)	-67.89	-65.39	-66.85	-78.83	6.3
vvN (dB)	-68.31	-66.33	-67.35	-79.89	5.6
hhL (dB)	-30.56	-5.21	-13.59	-13.06	113.
vhL (dB)	-29.50	-3.71	-11.28	-12.45	76.5
ppN (m/s)	-15.80	15.80	0.19	8.89	
ppT (m/s)	-0.32	0.23	-0.01	0.03	
vh/hh (dB)	-NaN	8.96	-10.82	-3.29	566.
hn_jmp (dB)	-1.23	1.07	-0.11	-11.78	6.8
vn_jmp (dB)	-1.29	0.91	-0.13	-11.64	7.1



IHOP 2002 (dual-antenna config, modes 1,3,4,7) Data (cal: 49.0,50.0)

W2002-06-12-20-27-04 - SPPMAG
 IRIG:0,Time: 20:27:02.44 to 20:52:17.03, Dur: 1515s
 TimeLngth: 1514.59s, TimeInt: 24ms (40.6pps)
 TimeCor=0.0s, DSPDif(mn,min,mx):24,20,449
 PPS(min,max,std): 24,42,2.43
 Prof: 674 to 62217, NumProf(t/r): 61543/30122
 ProcTime/Recs: 20:27:02-20:39:23/0-30121
 MxACQtime: 17ms; DRate: 97.3KB/s; Flags: 0, 0, 0
 Pulse: 275ns, IFfilt: 5.0MHz; ppPol: HH
 TxPol: H, PRF: 20 kHz
 Range: Delay 75m, Spacing 15m, Gates 150
 Ave. Pulses: 348, Rng/Prof Aspect@90m/s: 6.8

	Min	Max	Mean	Std	Varc%
hhN (dB)	-67.89	-65.39	-66.85	-78.83	6.3
vvN (dB)	-68.31	-66.33	-67.35	-79.89	5.6
hhL (dB)	-30.56	-5.21	-13.59	-13.06	113.
vhL (dB)	-29.50	-3.71	-11.28	-12.45	76.5
ppN (m/s)	-15.80	15.80	0.19	8.89	
ppT (m/s)	-0.32	0.23	-0.01	0.03	
vh/hh (dB)	-NaN	8.96	-10.82	-3.29	566.
hn_jmp (dB)	-1.23	1.07	-0.11	-11.78	6.8
vn_jmp (dB)	-1.29	0.91	-0.13	-11.64	7.1



IHOP 2002 (dual-antenna config, modes 1,3,4,7) Data (cal: 49.0,50.0)

W2002-06-12-20-27-04 - SPPMAG
 IRIG:0,Time: 20:27:02.44 to 20:52:17.03, Dur: 1515s
 TimeLngth: 1514.59s, TimeInt: 24ms (40.6pps)
 TimeCor=0.0s, DSPDif(mn,min,mx):24,20,449
 PPS(min,max,std): 24,42,2.43
 Prof: 674 to 62217, NumProf(t/r): 61543/30122
 ProcTime/Recs: 20:27:02-20:39:23/0-30121
 MxACQtime: 17ms; DRate: 97.3KB/s; Flags: 0, 0, 0
 Pulse: 275ns, IFfilt: 5.0MHz; ppPol: HH
 TxPol: H, PRF: 20 kHz
 Range: Delay 75m, Spacing 15m, Gates 150
 Ave. Pulses: 348, Rng/Prof Aspect@90m/s: 6.8

	Min	Max	Mean	Std	Varc%
hhN (dB)	-67.89	-65.39	-66.85	-78.83	6.3
vvN (dB)	-68.31	-66.33	-67.35	-79.89	5.6
hhL (dB)	-30.56	-5.21	-13.59	-13.06	113.
vhL (dB)	-29.50	-3.71	-11.28	-12.45	76.5
ppN (m/s)	-15.80	15.80	0.19	8.89	
ppT (m/s)	-0.32	0.23	-0.01	0.03	
vh/hh (dB)	-NaN	8.96	-10.82	-3.29	566.
hn_jmp (dB)	-1.23	1.07	-0.11	-11.78	6.8
vn_jmp (dB)	-1.29	0.91	-0.13	-11.64	7.1