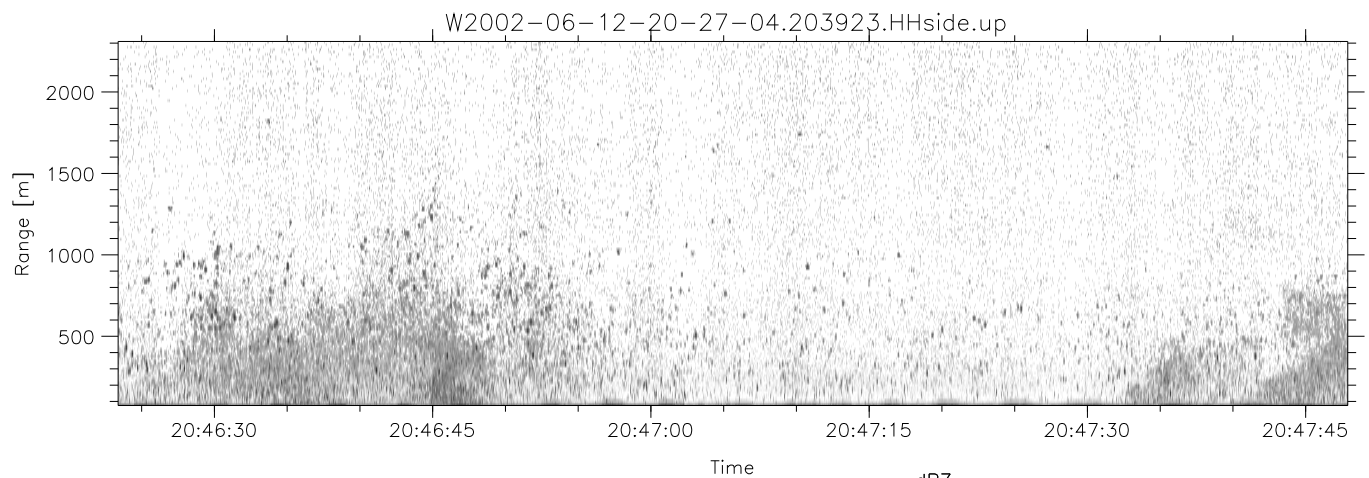
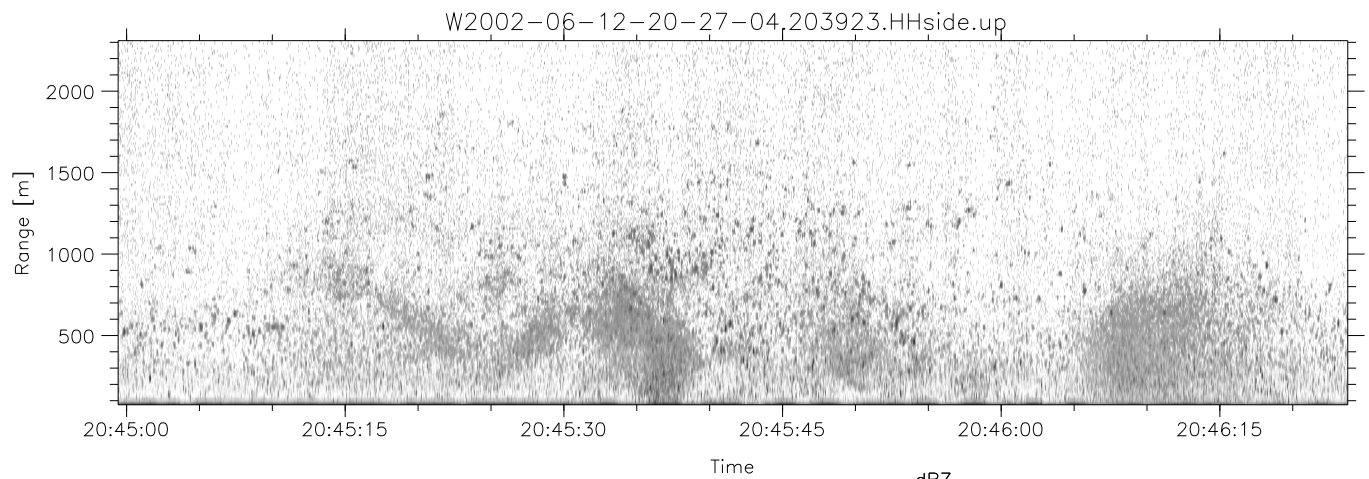
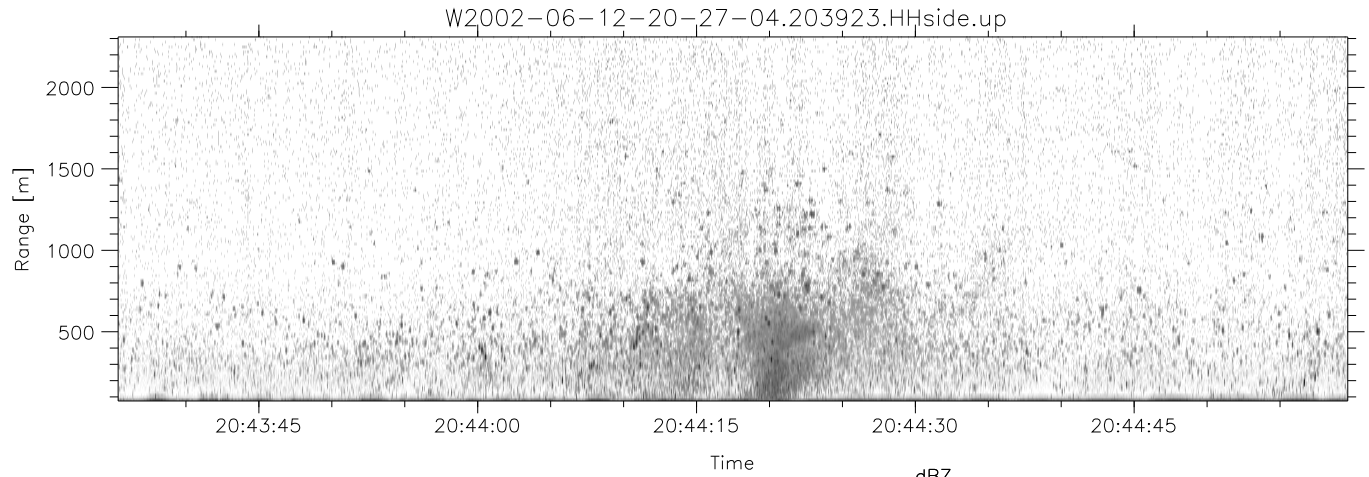


IHOP 2002 (dual-antenna config, modes 1,3,4,7) Data (cal: 49.0,50.0)

W2002-06-12-20-27-04 - SPPMAG  
 IRIG:0,Time: 20:27:02.44 to 20:52:17.03, Dur: 1515s  
 TimeLngth: 1514.59s, TimeInt: 24ms (40.6pps)  
 TimeCor=0.0s, DSPDif(mn,min,mx):25,20,365  
 PPS(min,max,std): 20,42,2.74  
 Prof: 674 to 62217, NumProf(t/r): 61543/30122  
 ProcTime/Recs: 20:39:23-20:51:45/30122-60243  
 MxACQtime: 17ms; DRate: 97.3KB/s; Flags: 0, 0, 0  
 Pulse: 275ns, IFfilt: 5.0MHz; ppPol: HH  
 TxPol: H, PRF: 20 kHz  
 Range: Delay 75m, Spacing 15m, Gates 150  
 Ave. Pulses: 348, Rng/Prof Aspect@90m/s: 6.8

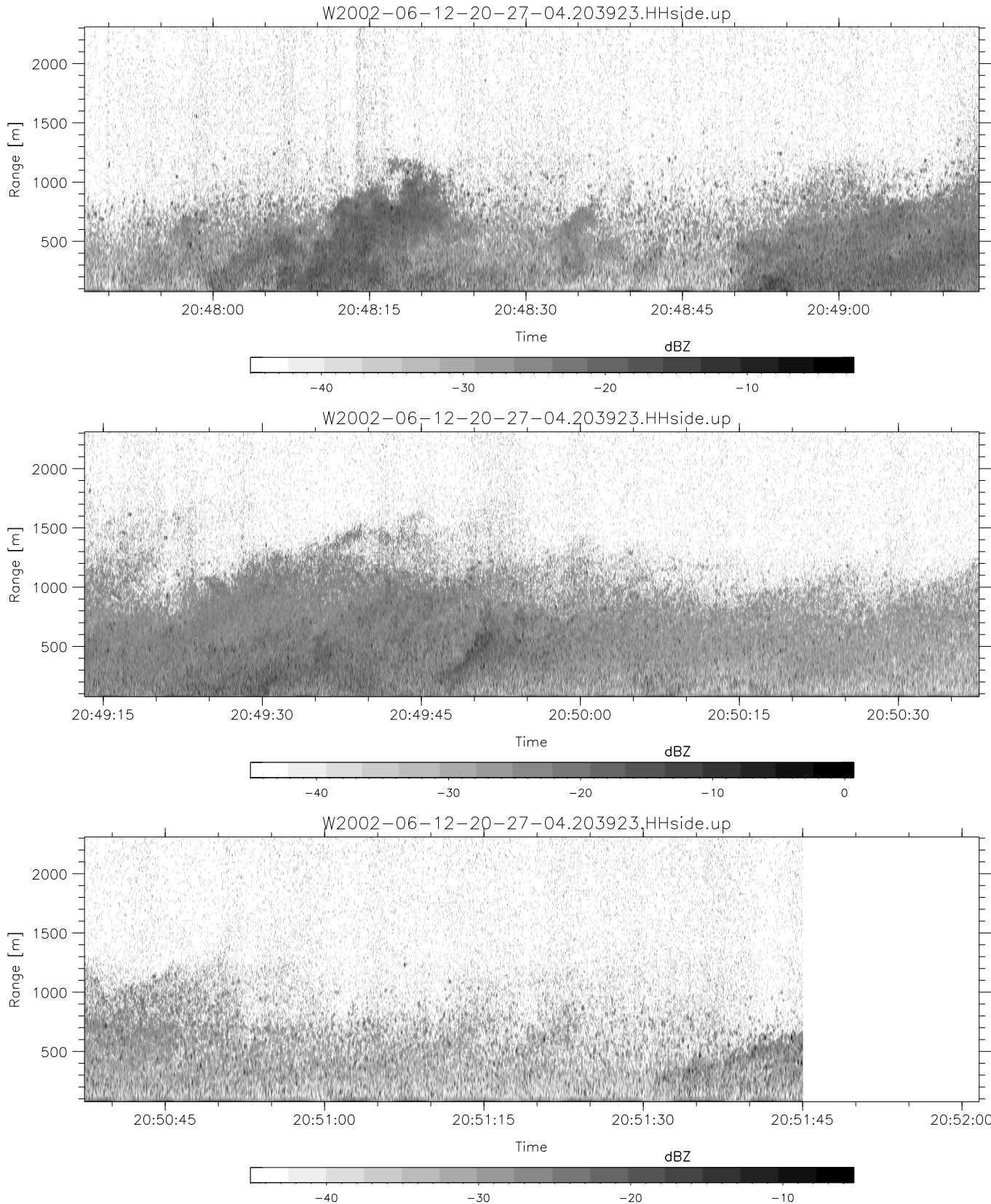
	Min	Max	Mean	Std	Varc%
hhN(dB)	-67.80	-65.03	-66.49	-77.20	8.5
vvN(dB)	-68.18	-66.23	-67.26	-79.93	5.4
hhL(dB)	-30.21	-5.22	-11.70	-12.82	77.3
vhL(dB)	-26.48	-5.01	-10.71	-13.73	49.9
ppN(m/s)	-15.80	15.80	0.11	8.96	
ppT(m/s)	-0.26	0.09	-0.01	0.01	
vh/hh(dB)	-NaN	3.08	-16.51	-8.91	575.
hnjmp(dB)	-1.30	1.04	-0.11	-11.71	6.9
vnjmp(dB)	-1.40	0.95	-0.13	-11.70	7.0



IHOP 2002 (dual-antenna config, modes 1,3,4,7) Data (cal: 49.0,50.0)

W2002-06-12-20-27-04 - SPPMAG  
 IRIG:0,Time: 20:27:02.44 to 20:52:17.03, Dur: 1515s  
 TimeLngth: 1514.59s, TimeInt: 24ms (40.6pps)  
 TimeCor=0.0s, DSPDif(mn,min,mx):25,20,365  
 PPS(min,max,std): 20,42,2.74  
 Prof: 674 to 62217, NumProf(t/r): 61543/30122  
 ProcTime/Recs: 20:39:23-20:51:45/30122-60243  
 MxACQtime: 17ms; DRate: 97.3KB/s; Flags: 0, 0, 0  
 Pulse: 275ns, IFfilt: 5.0MHz; ppPol: HH  
 TxPol: H, PRF: 20 kHz  
 Range: Delay 75m, Spacing 15m, Gates 150  
 Ave. Pulses: 348, Rng/Prof Aspect@90m/s: 6.8

	Min	Max	Mean	Std	Varc%
hhN(dB)	-67.80	-65.03	-66.49	-77.20	8.5
vvN(dB)	-68.18	-66.23	-67.26	-79.93	5.4
hhL(dB)	-30.21	-5.22	-11.70	-12.82	77.3
vhL(dB)	-26.48	-5.01	-10.71	-13.73	49.9
ppN(m/s)	-15.80	15.80	0.11	8.96	
ppT(m/s)	-0.26	0.09	-0.01	0.01	
vh/hh(dB)	-NaN	3.08	-16.51	-8.91	575.
hnjmp(dB)	-1.30	1.04	-0.11	-11.71	6.9
vnjmp(dB)	-1.40	0.95	-0.13	-11.70	7.0



IHOP 2002 (dual-antenna config, modes 1,3,4,7) Data (cal: 49.0,50.0)

W2002-06-12-20-27-04 - SPPMAG	Min	Max	Mean	Std	Varc%	
IRIG:0,Time: 20:27:02.44 to 20:52:17.03, Dur: 1515s	hhN (dB)	-67.80	-65.03	-66.49	-77.20	8.5
TimeLngth: 1514.59s, TimeInt: 24ms (40.6pps)	vvN (dB)	-68.18	-66.23	-67.26	-79.93	5.4
TimeCor=0.0s, DSPDif(mn,min,mx):25,20,365	hhL (dB)	-30.21	-5.22	-11.70	-12.82	77.3
PPS(min,max,std): 20,42,2.74	vhL (dB)	-26.48	-5.01	-10.71	-13.73	49.9
Prof: 674 to 62217, NumProf(t/r): 61543/30122	ppN (m/s)	-15.80	15.80	0.11	8.96	
ProcTime/Recs: 20:39:23-20:51:45/30122-60243	ppT (m/s)	-0.26	0.09	-0.01	0.01	
MxACQtime: 17ms; DRate: 97.3KB/s; Flags: 0, 0, 0	vh/hh (dB)	-NaN	3.08	-16.51	-8.91	575.
Pulse: 275ns, IFfilt: 5.0MHz; ppPol: HH	hn_jmp (dB)	-1.30	1.04	-0.11	-11.71	6.9
TxPol: H, PRF: 20 kHz	vn_jmp (dB)	-1.40	0.95	-0.13	-11.70	7.0
Range: Delay 75m, Spacing 15m, Gates 150						
Ave. Pulses: 348, Rng/Prof Aspect@90m/s: 6.8						