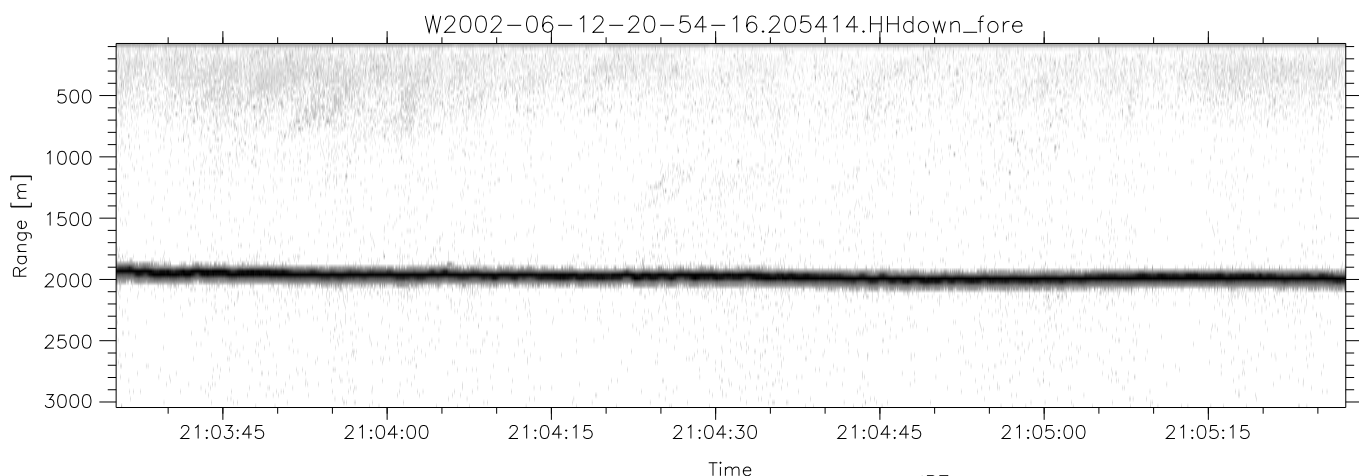
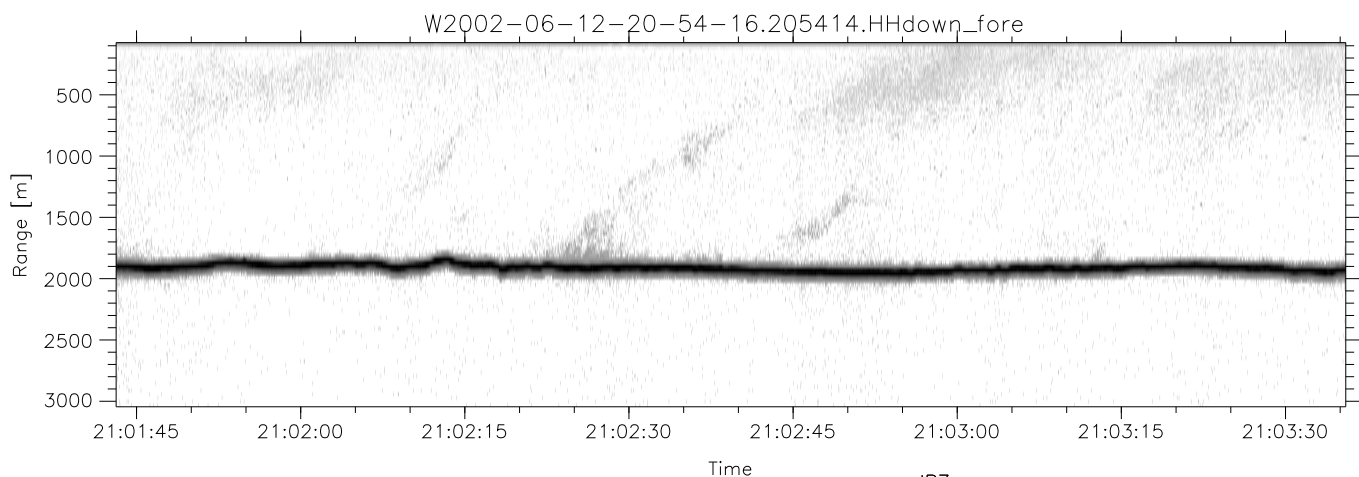
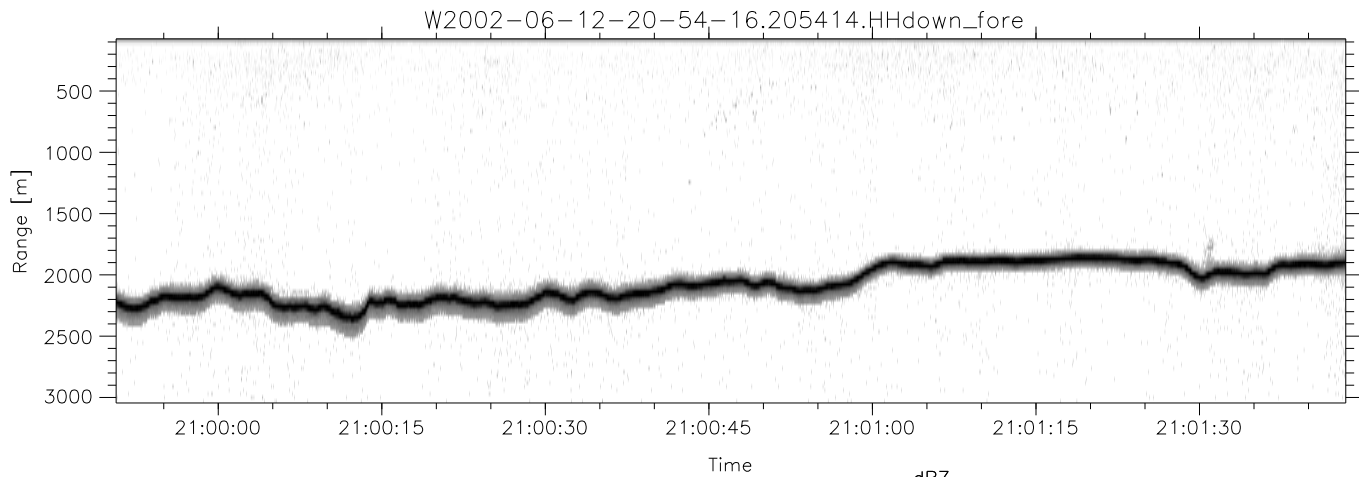


IHOP 2002 (dual-antenna config, modes 1,3,4,7) Data (cal: 55.0,50.0)

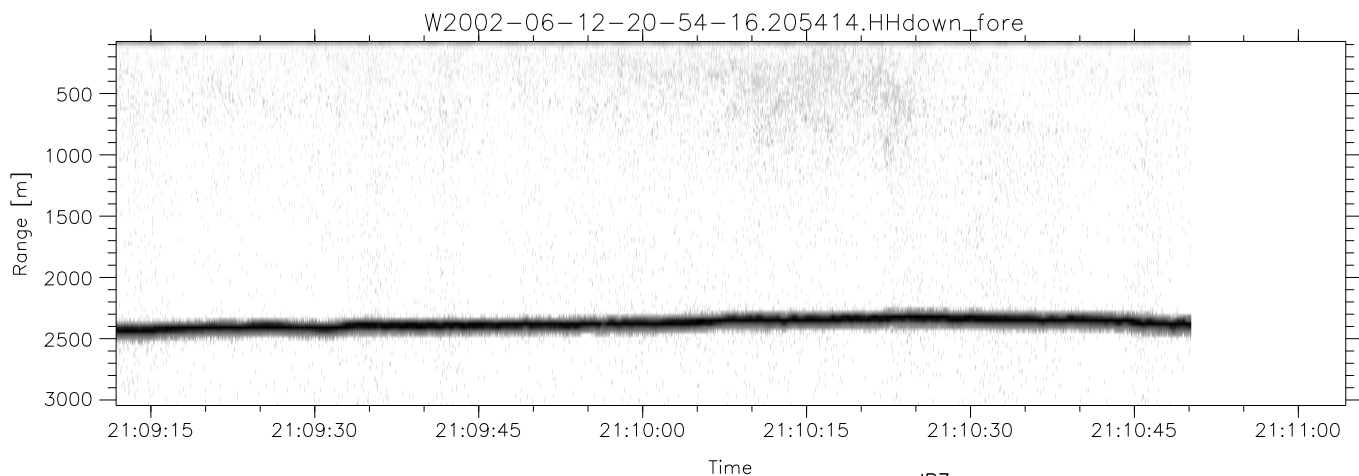
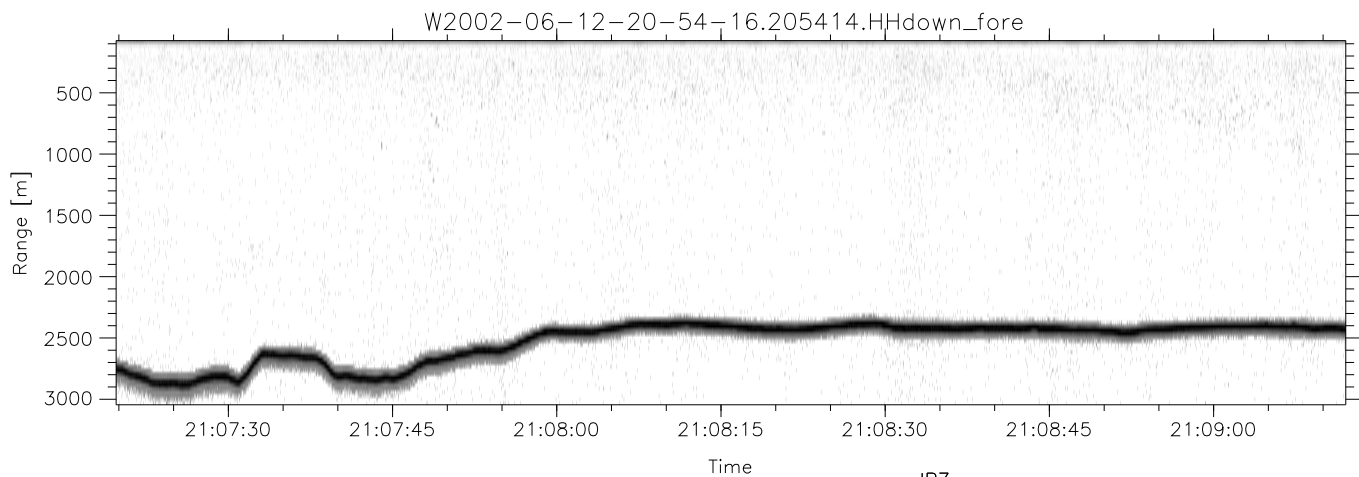
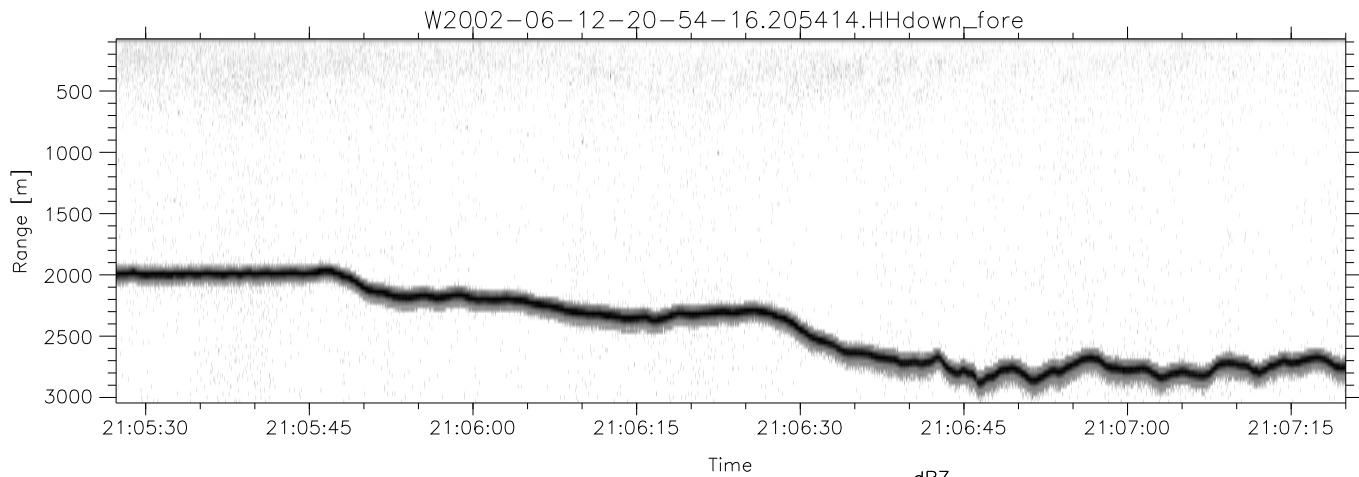
W2002-06-12-20-54-16 - PPMAG4	Min	Max	Mean	Std	Varc%	
IRIG:0,Time: 20:54:14.16 to 21:49:01.08, Dur: 3287s	hhN(dB)	-68.51	-62.92	-66.68	-76.40	10.7
TimeLngth: 3286.92s, TimeInt: 29ms (34.3pps)	vvN(dB)	-69.18	-64.76	-67.23	-76.94	10.7
TimeCor=0.0s, DSPDif(mn,min,mx):29,28,385	hhL(dB)	-20.67	-4.37	-9.65	-14.02	36.5
PPS(min,max,std): 23,36,2.27	vvL(dB)	-13.69	-2.69	-7.39	-13.39	25.2
Prof: 583 to 113176, NumProf(t/r): 112593/34138	ppN(m/s)	-12.78	12.56	-0.04	4.12	
ProcTime/Recs: 20:54:14-21:10:50/0-34137	ppT(m/s)	-100.9	99.23	-0.31	32.55	
MxAcQtime: 33ms; DRate: 191.7KB/s; Flags: 0, 0, 0	hh/vv(dB)	-NaN	96.70	48.37	72.10	2358
Pulse: 275ns, IFilt: 5.0MHz; ppPol: HH HV VV	vh/hh(dB)	-NaN	-27.13	-50.55	-42.10	700.
TxPol: HHVV, PRF: 20 10 20 10 kHz	hv/vv(dB)	-NaN	-32.73	-54.18	-47.23	495.
Range: Delay 75m, Spacing 30m, Gates 100	hnjmp(dB)	-3.07	2.97	0.17	-8.31	14.2
Ave. Pulses: 84, Rng/Prof Aspect@90m/s: 11.4	vnjmp(dB)	-2.31	2.53	0.20	-8.25	14.3



IHOP 2002 (dual-antenna config, modes 1,3,4,7) Data (cal: 55.0,50.0)

W2002-06-12-20-54-16 - PPMAG4  
 IRIG:0,Time: 20:54:14.16 to 21:49:01.08, Dur: 3287s  
 TimeLngth: 3286.92s, TimeInt: 29ms (34.3pps)  
 TimeCor=0.0s, DSPDif(mn,min,mx):29,28,385  
 PPS(min,max,std): 23,36,2.27  
 Prof: 583 to 113176, NumProf(t/r): 112593/34138  
 ProcTime/Recs: 20:54:14-21:10:50/0-34137  
 MxACQtime: 33ms; DRate: 191.7KB/s; Flags: 0, 0, 0  
 Pulse: 275ns, IFfilt: 5.0MHz; ppPol: HH HV VV  
 TxPol: HHVV, PRF: 20 10 20 10 kHz  
 Range: Delay 75m, Spacing 30m, Gates 100  
 Ave. Pulses: 84, Rng/Prof Aspect@90m/s: 11.4

	Min	Max	Mean	Std	Varc%
hhN(dB)	-68.51	-62.92	-66.68	-76.40	10.7
vvN(dB)	-69.18	-64.76	-67.23	-76.94	10.7
hhL(dB)	-20.67	-4.37	-9.65	-14.02	36.5
vvL(dB)	-13.69	-2.69	-7.39	-13.39	25.2
ppN(m/s)	-12.78	12.56	-0.04	4.12	
ppT(m/s)	-100.9	99.23	-0.31	32.55	
hh/vv(dB)	-NaN	96.70	48.37	72.10	2358
vh/hh(dB)	-NaN	-27.13	-50.55	-42.10	700.
hv/vv(dB)	-NaN	-32.73	-54.18	-47.23	495.
hnjmp(dB)	-3.07	2.97	0.17	-8.31	14.2
vnjmp(dB)	-2.31	2.53	0.20	-8.25	14.3



IHOP 2002 (dual-antenna config, modes 1,3,4,7) Data (cal: 55.0,50.0)

W2002-06-12-20-54-16 - PPMAG4  
 IRIG:0,Time: 20:54:14.16 to 21:49:01.08, Dur: 3287s  
 TimeLngth: 3286.92s, TimeInt: 29ms (34.3pps)  
 TimeCor=0.0s, DSPDif(mn,min,mx):29,28,385  
 PPS(min,max,std): 23,36,2.27  
 Prof: 583 to 113176, NumProf(t/r): 112593/34138  
 ProcTime/Recs: 20:54:14-21:10:50/0-34137  
 MxACQtime: 33ms; DRate: 191.7KB/s; Flags: 0, 0, 0  
 Pulse: 275ns, IFilt: 5.0MHz; ppPol: HH HV VV  
 TxPol: HHVV, PRF: 20 10 20 10 kHz  
 Range: Delay 75m, Spacing 30m, Gates 100  
 Ave. Pulses: 84, Rng/Prof Aspect@90m/s: 11.4

	Min	Max	Mean	Std	Varc%
hhN(dB)	-68.51	-62.92	-66.68	-76.40	10.7
vvN(dB)	-69.18	-64.76	-67.23	-76.94	10.7
hhL(dB)	-20.67	-4.37	-9.65	-14.02	36.5
vvL(dB)	-13.69	-2.69	-7.39	-13.39	25.2
ppN(m/s)	-12.78	12.56	-0.04	4.12	
ppT(m/s)	-100.9	99.23	-0.31	32.55	
hh/vv(dB)	-NaN	96.70	48.37	72.10	2358
vh/hh(dB)	-NaN	-27.13	-50.55	-42.10	700.
hv/vv(dB)	-NaN	-32.73	-54.18	-47.23	495.
hnjmp(dB)	-3.07	2.97	0.17	-8.31	14.2
vnjmp(dB)	-2.31	2.53	0.20	-8.25	14.3