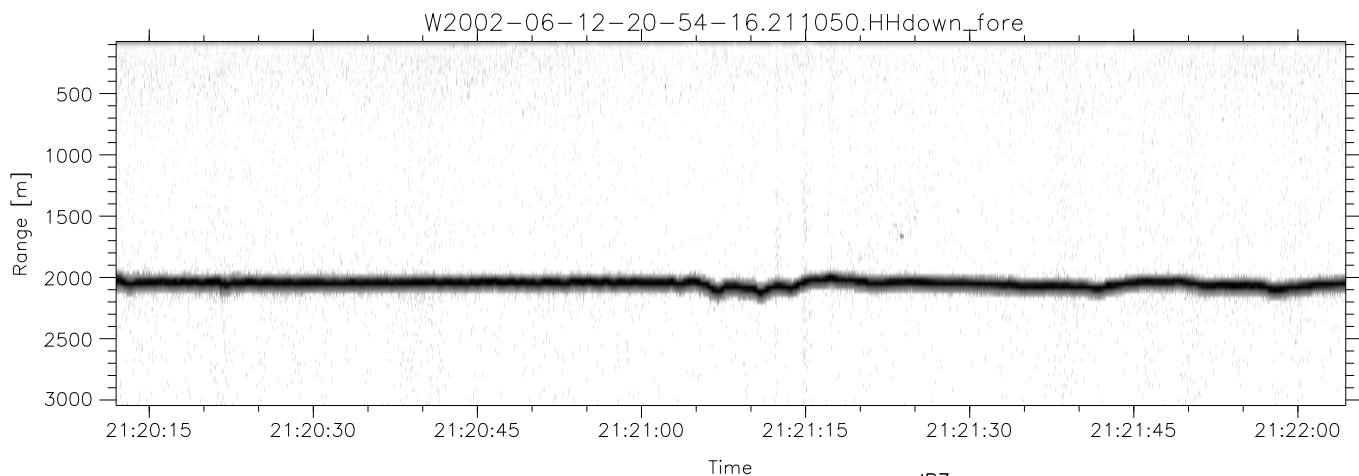
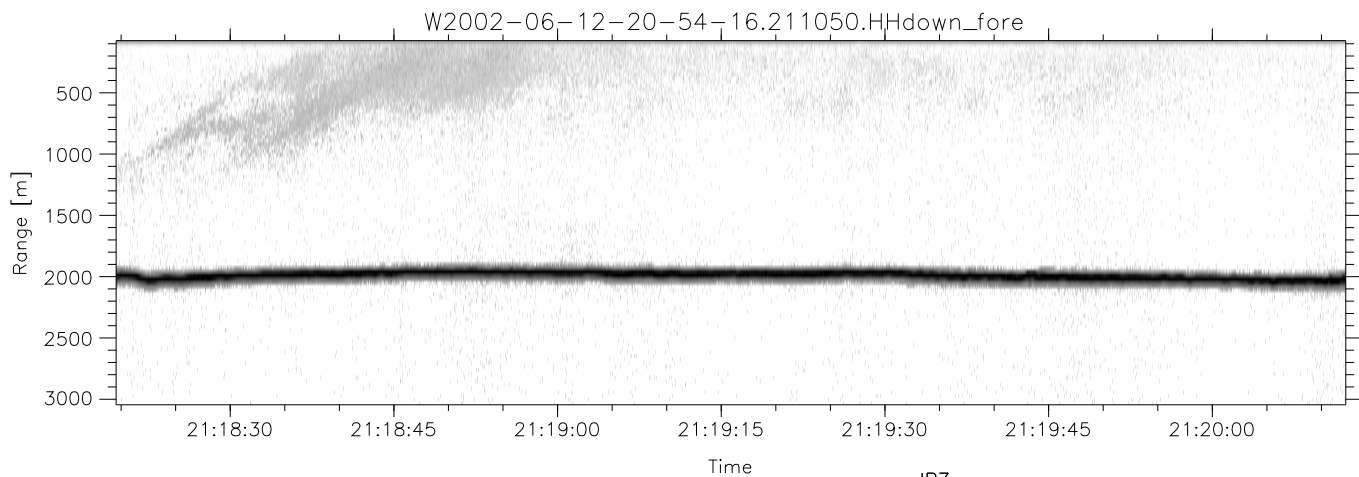
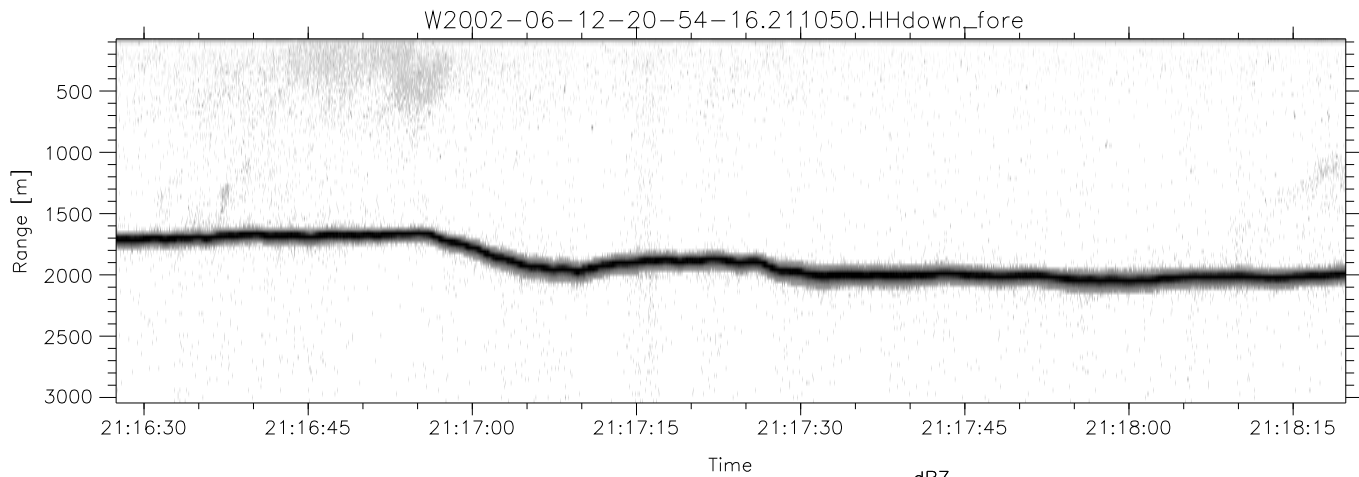


IHOP 2002 (dual-antenna config, modes 1,3,4,7) Data (cal: 55.0,50.0)

W2002-06-12-20-54-16 - PPMAG4
 IRIG:0,Time: 20:54:14.16 to 21:49:01.08, Dur: 3287s
 TimeLngth: 3286.92s, TimeInt: 29ms (34.3pps)
 TimeCor=0.0s, DSPDif(mn,min,mx):29,28,368
 PPS(min,max,std): 23,36,2.33
 Prof: 583 to 113176, NumProf(t/r): 112593/34138
 ProcTime/Recs: 21:10:50-21:27:27/34138-68275
 MxACQtime: 33ms; DRate: 191.7KB/s; Flags: 0, 0, 0
 Pulse: 275ns, IFfilt: 5.0MHz; ppPol: HH HV VV
 TxPol: HHVV, PRF: 20 10 20 10 kHz
 Range: Delay 75m, Spacing 30m, Gates 100
 Ave. Pulses: 84, Rng/Prof Aspect@90m/s: 11.4

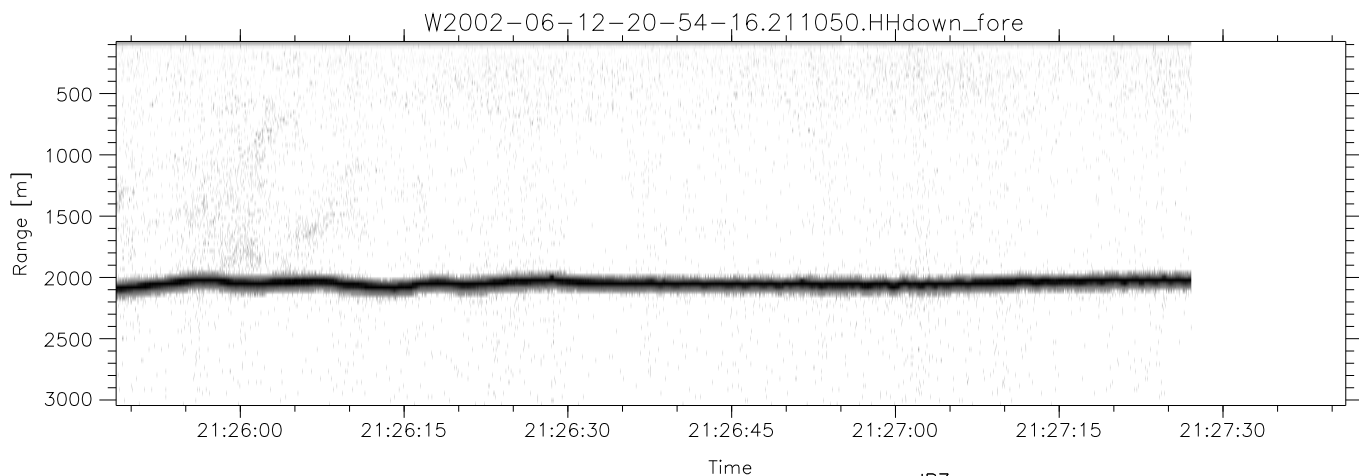
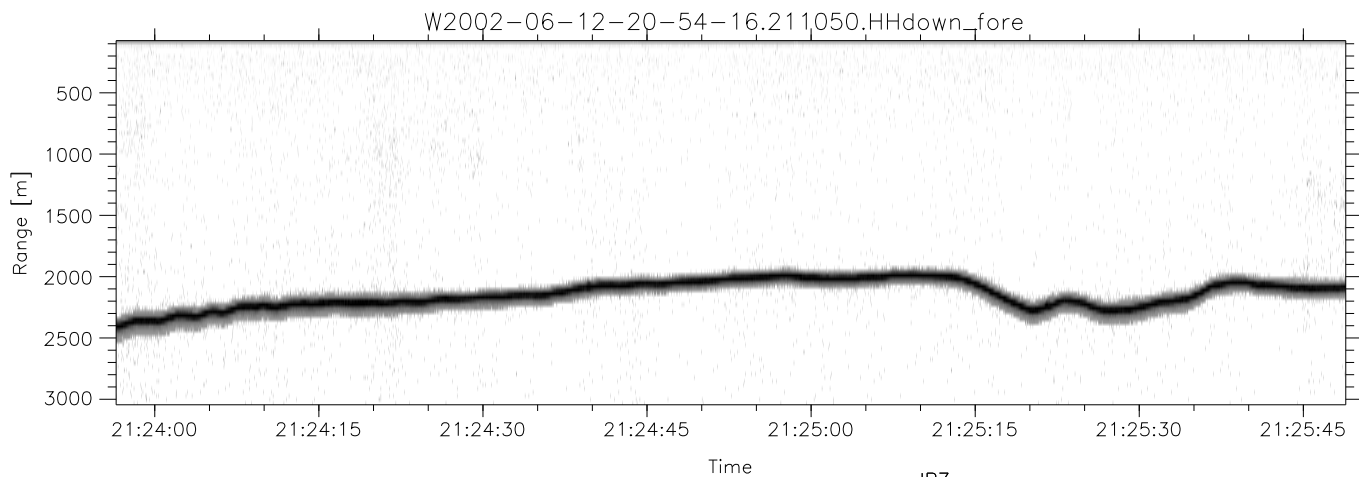
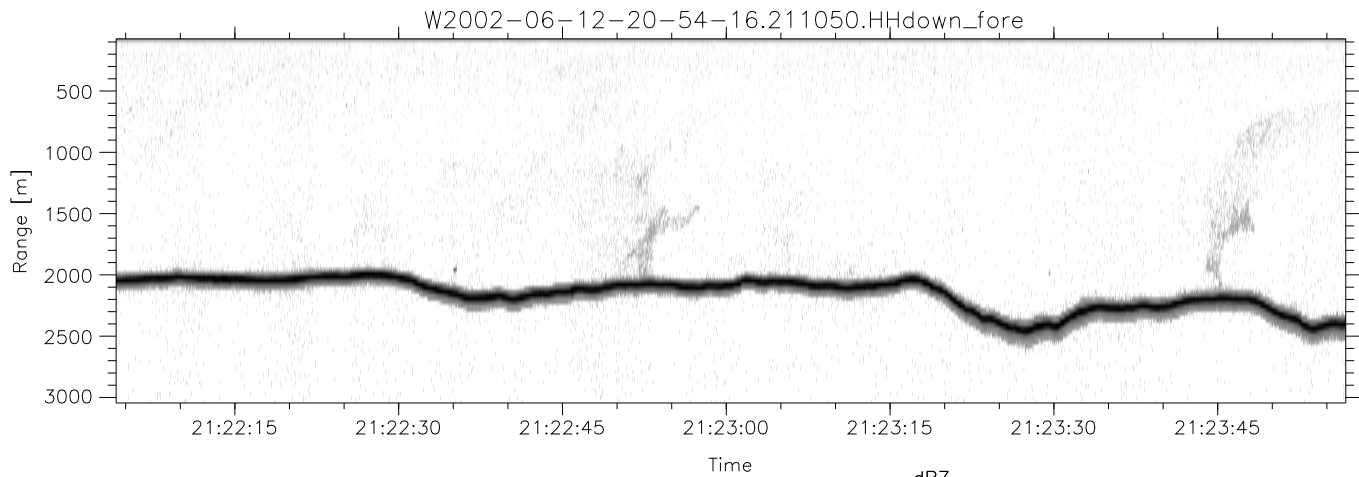
	Min	Max	Mean	Std	Varc%
hhN(dB)	-68.67	-64.92	-66.61	-76.53	10.2
vvN(dB)	-69.24	-65.35	-67.21	-77.08	10.3
hhL(dB)	-23.71	-4.37	-9.46	-13.93	35.7
vvL(dB)	-11.74	-2.83	-7.36	-12.56	30.3
ppN(m/s)	-12.79	12.93	-0.02	4.15	
ppT(m/s)	-101.0	102.18	-0.16	32.75	
hh/vv(dB)	-NaN	99.84	-NaN	78.23	-708
vh/hh(dB)	-NaN	-29.87	-50.16	-42.38	600.
hv/vv(dB)	-NaN	-35.53	-54.25	-47.36	488.
hnjmp(dB)	-2.47	2.59	0.17	-8.29	14.2
vnjmp(dB)	-2.66	2.30	0.19	-8.26	14.3



IHOP 2002 (dual-antenna config, modes 1,3,4,7) Data (cal: 55.0,50.0)

W2002-06-12-20-54-16 - PPMAG4
 IRIG:0,Time: 20:54:14.16 to 21:49:01.08, Dur: 3287s
 TimeLngth: 3286.92s, TimeInt: 29ms (34.3pps)
 TimeCor=0.0s, DSPDif(mn,min,mx):29,28,368
 PPS(min,max,std): 23,36,2.33
 Prof: 583 to 113176, NumProf(t/r): 112593/34138
 ProcTime/Recs: 21:10:50-21:27:27/34138-68275
 MxACQtime: 33ms; DRate: 191.7KB/s; Flags: 0, 0, 0
 Pulse: 275ns, IFfilt: 5.0MHz; ppPol: HH HV VV
 TxPol: HHVV, PRF: 20 10 20 10 kHz
 Range: Delay 75m, Spacing 30m, Gates 100
 Ave. Pulses: 84, Rng/Prof Aspect@90m/s: 11.4

	Min	Max	Mean	Std	Varc%
hhN(dB)	-68.67	-64.92	-66.61	-76.53	10.2
vvN(dB)	-69.24	-65.35	-67.21	-77.08	10.3
hhL(dB)	-23.71	-4.37	-9.46	-13.93	35.7
vvL(dB)	-11.74	-2.83	-7.36	-12.56	30.3
ppN(m/s)	-12.79	12.93	-0.02	4.15	
ppT(m/s)	-101.0	102.18	-0.16	32.75	
hh/vv(dB)	-NaN	99.84	-NaN	78.23	-708
vh/hh(dB)	-NaN	-29.87	-50.16	-42.38	600.
hv/vv(dB)	-NaN	-35.53	-54.25	-47.36	488.
hnjmp(dB)	-2.47	2.59	0.17	-8.29	14.2
vnjmp(dB)	-2.66	2.30	0.19	-8.26	14.3



IHOP 2002 (dual-antenna config, modes 1,3,4,7) Data (cal: 55.0,50.0)

W2002-06-12-20-54-16 - PPMAG4
 IRIG:0,Time: 20:54:14.16 to 21:49:01.08, Dur: 3287s
 TimeLngth: 3286.92s, TimeInt: 29ms (34.3pps)
 TimeCor=0.0s, DSPDif(mn,min,mx):29,28,368
 PPS(min,max,std): 23,36,2.33
 Prof: 583 to 113176, NumProf(t/r): 112593/34138
 ProcTime/Recs: 21:10:50-21:27:27/34138-68275
 MxACQtime: 33ms; DRate: 191.7KB/s; Flags: 0, 0, 0
 Pulse: 275ns, IFilt: 5.0MHz; ppPol: HH HV VV
 TxPol: HHVV, PRF: 20 10 20 10 kHz
 Range: Delay 75m, Spacing 30m, Gates 100
 Ave. Pulses: 84, Rng/Prof Aspect@90m/s: 11.4

	Min	Max	Mean	Std	Varc%
hhN(dB)	-68.67	-64.92	-66.61	-76.53	10.2
vvN(dB)	-69.24	-65.35	-67.21	-77.08	10.3
hhL(dB)	-23.71	-4.37	-9.46	-13.93	35.7
vvL(dB)	-11.74	-2.83	-7.36	-12.56	30.3
ppN(m/s)	-12.79	12.93	-0.02	4.15	
ppT(m/s)	-101.0	102.18	-0.16	32.75	
hh/vv(dB)	-NaN	99.84	-NaN	78.23	-708
vh/hh(dB)	-NaN	-29.87	-50.16	-42.38	600.
hv/vv(dB)	-NaN	-35.53	-54.25	-47.36	488.
hh_jmp(dB)	-2.47	2.59	0.17	-8.29	14.2
vv_jmp(dB)	-2.66	2.30	0.19	-8.26	14.3