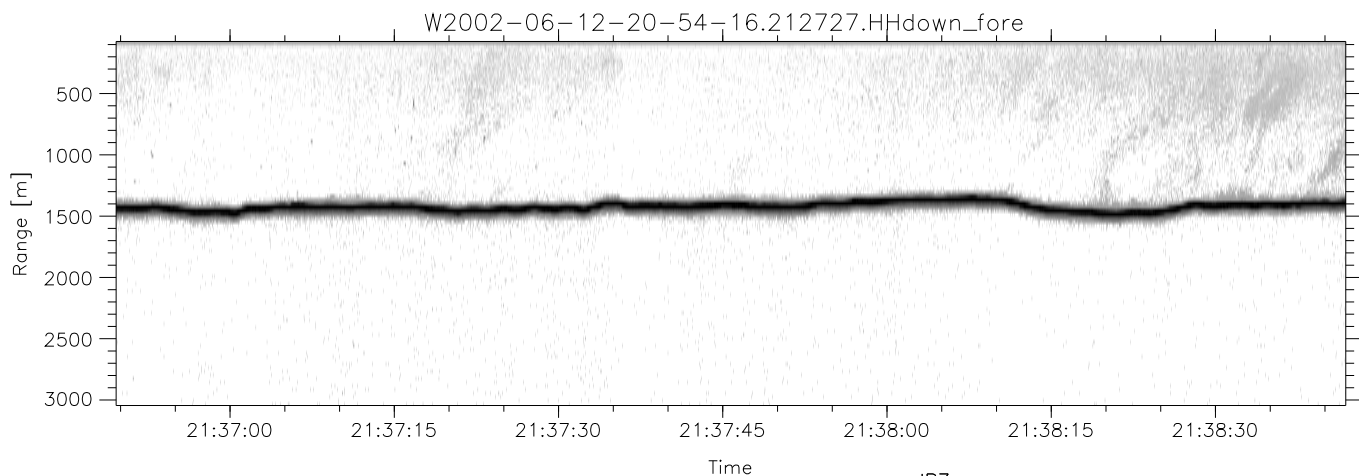
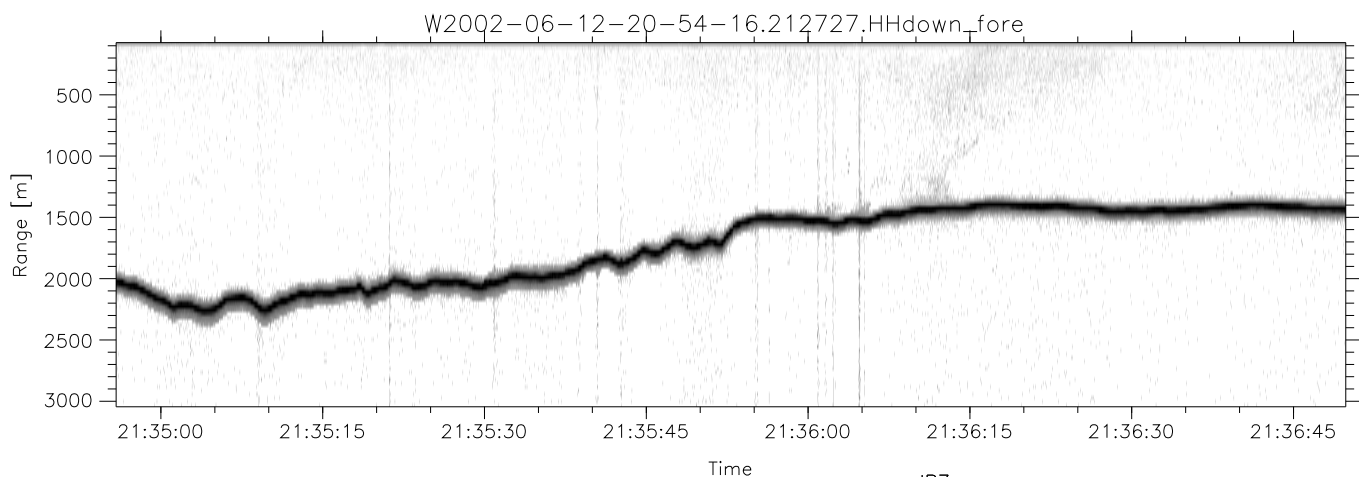
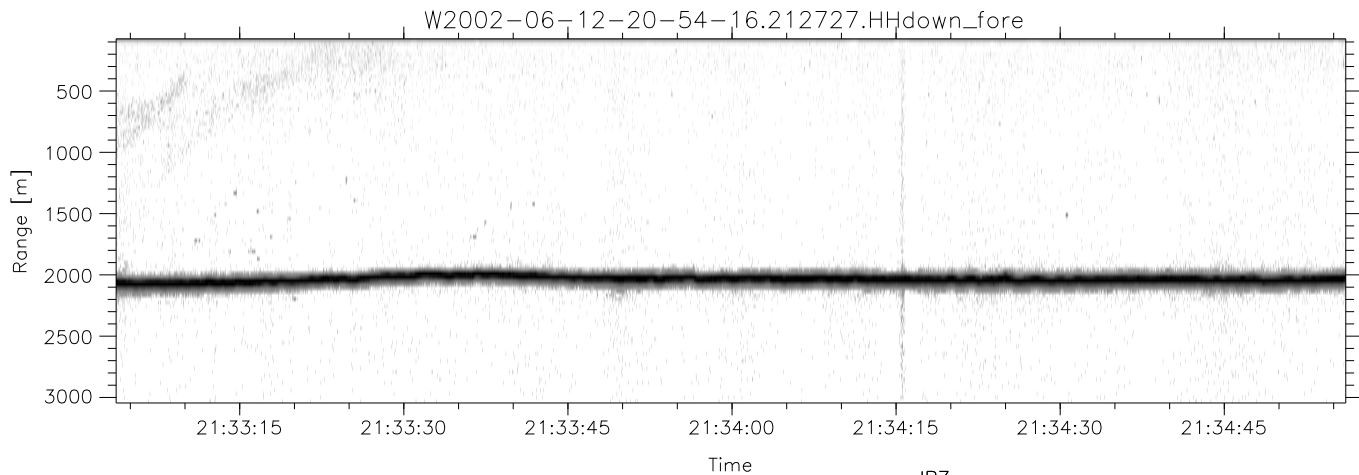


IHOP 2002 (dual-antenna config, modes 1,3,4,7) Data (cal: 55.0,50.0)

W2002-06-12-20-54-16 - PPMAG4
 IRIG:0,Time: 20:54:14.16 to 21:49:01.08, Dur: 3287s
 TimeLngth: 3286.92s, TimeInt: 29ms (34.3pps)
 TimeCor=0.0s, DSPDif(mn,min,mx):29,28,369
 PPS(min,max,std): 23,36,2.33
 Prof: 583 to 113176, NumProf(t/r): 112593/34138
 ProcTime/Recs: 21:27:27-21:44:04/68276-102413
 MxACQtime: 33ms; DRate: 191.7KB/s; Flags: 0, 0, 0
 Pulse: 275ns, IFfilt: 5.0MHz; ppPol: HH HV VV
 TxPol: HHVV, PRF: 20 10 20 10 kHz
 Range: Delay 75m, Spacing 30m, Gates 100
 Ave. Pulses: 84, Rng/Prof Aspect@90m/s: 11.4

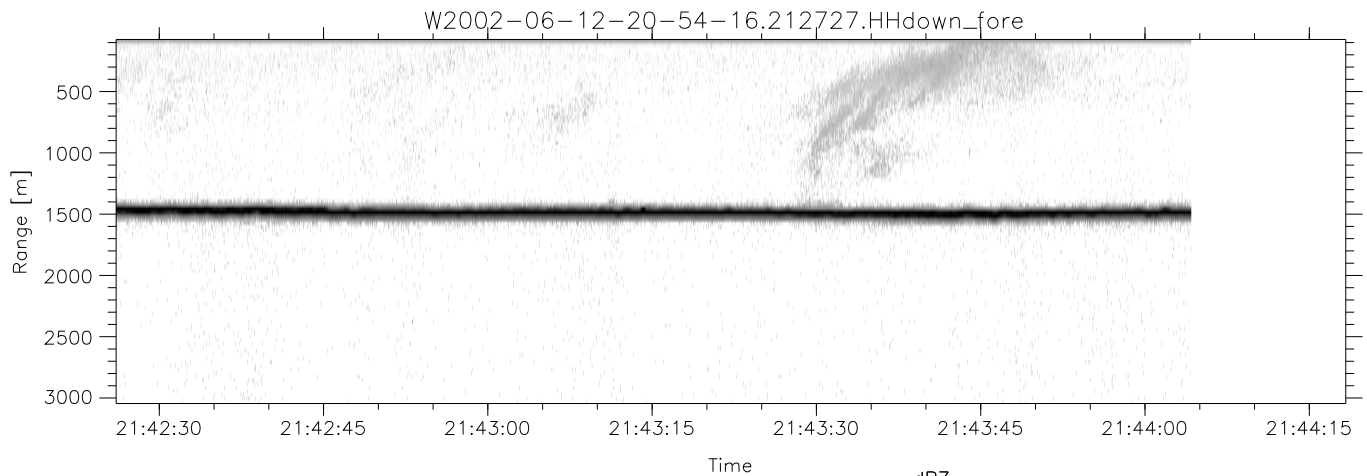
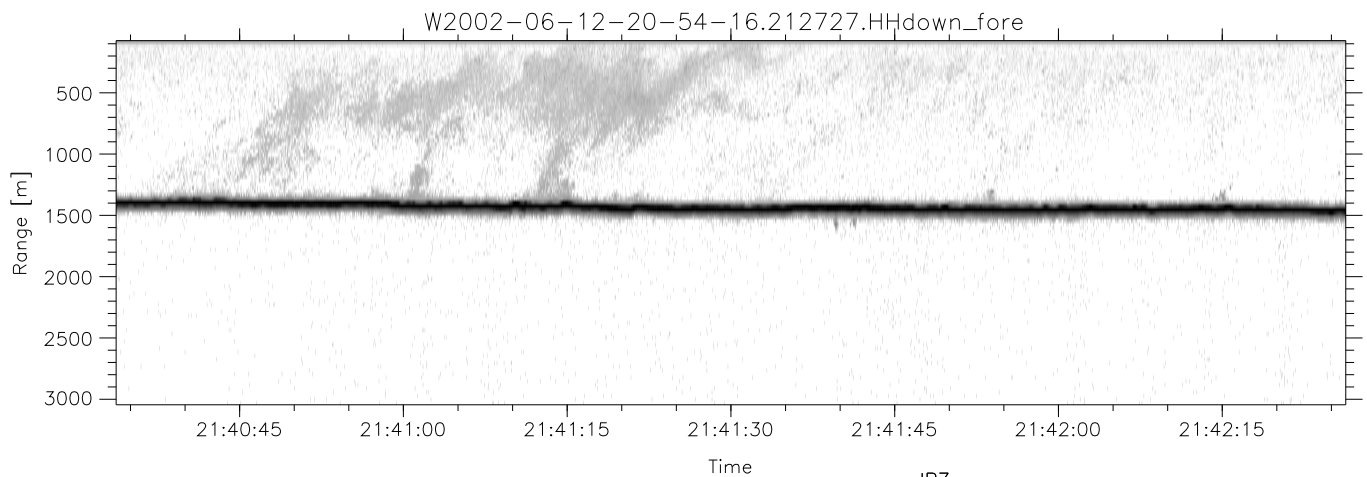
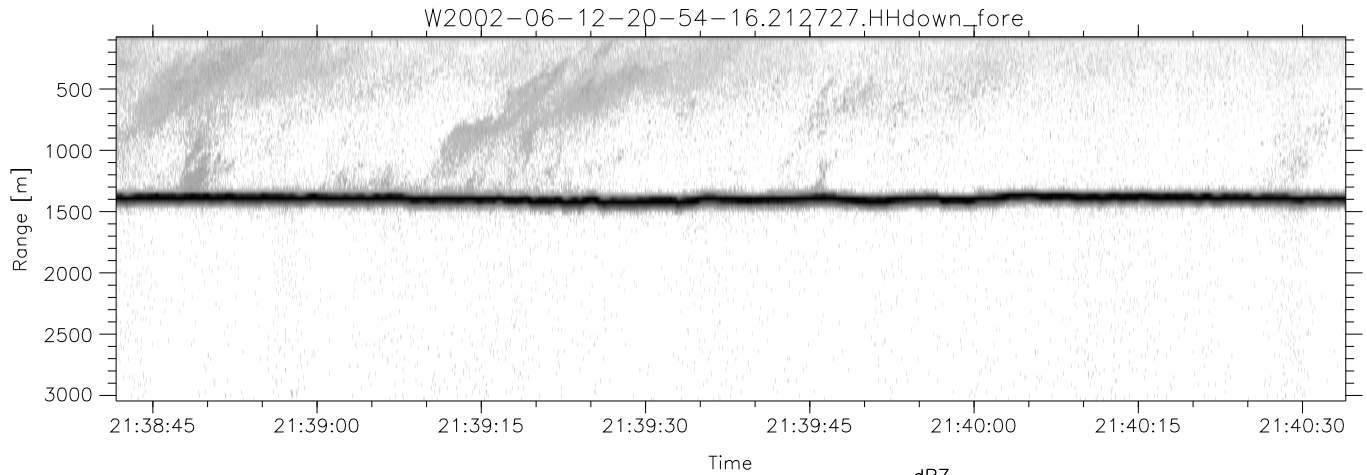
	Min	Max	Mean	Std	Varc%
hhN(dB)	-68.60	-64.46	-66.60	-76.54	10.1
vvN(dB)	-69.04	-63.58	-67.12	-76.49	11.6
hhL(dB)	-19.78	-7.92	-10.21	-17.37	19.2
vvL(dB)	-13.27	-3.26	-7.27	-13.63	23.1
ppN(m/s)	-12.50	12.56	0.09	4.14	
ppT(m/s)	-98.73	99.24	0.75	32.69	
hh/vv(dB)	-NaN	96.61	49.82	74.44	2899
vh/hh(dB)	-NaN	-26.47	-50.17	-42.06	647.
hv/vv(dB)	-NaN	-34.90	-53.10	-47.20	389.
hh_jmp(dB)	-2.28	2.68	0.17	-8.35	14.1
vv_jmp(dB)	-2.49	2.58	0.19	-8.25	14.3



IHOP 2002 (dual-antenna config, modes 1,3,4,7) Data (cal: 55.0,50.0)

W2002-06-12-20-54-16 - PPMAG4
 IRIG:0,Time: 20:54:14.16 to 21:49:01.08, Dur: 3287s
 TimeLngth: 3286.92s, TimeInt: 29ms (34.3pps)
 TimeCor=0.0s, DSPDif(mn,min,mx):29,28,369
 PPS(min,max,std): 23,36,2.33
 Prof: 583 to 113176, NumProf(t/r): 112593/34138
 ProcTime/Recs: 21:27:27-21:44:04/68276-102413
 MxAcQtime: 33ms; DRate: 191.7KB/s; Flags: 0, 0, 0
 Pulse: 275ns, IFilt: 5.0MHz; ppPol: HH HV VV
 TxPol: HHVV, PRF: 20 10 20 10 kHz
 Range: Delay 75m, Spacing 30m, Gates 100
 Ave. Pulses: 84, Rng/Prof Aspect@90m/s: 11.4

	Min	Max	Mean	Std	Varc%
hhN(dB)	-68.60	-64.46	-66.60	-76.54	10.1
vvN(dB)	-69.04	-63.58	-67.12	-76.49	11.6
hhL(dB)	-19.78	-7.92	-10.21	-17.37	19.2
vvL(dB)	-13.27	-3.26	-7.27	-13.63	23.1
ppN(m/s)	-12.50	12.56	0.09	4.14	
ppT(m/s)	-98.73	99.24	0.75	32.69	
hh/vv(dB)	-NaN	96.61	49.82	74.44	2899
vh/hh(dB)	-NaN	-26.47	-50.17	-42.06	647.
hv/vv(dB)	-NaN	-34.90	-53.10	-47.20	389.
hh_jmp(dB)	-2.28	2.68	0.17	-8.35	14.1
vv_jmp(dB)	-2.49	2.58	0.19	-8.25	14.3



IHOP 2002 (dual-antenna config, modes 1,3,4,7) Data (cal: 55.0,50.0)

W2002-06-12-20-54-16 - PPMAG4
 IRIG:0,Time: 20:54:14.16 to 21:49:01.08, Dur: 3287s
 TimeLngth: 3286.92s, TimeInt: 29ms (34.3pps)
 TimeCor=0.0s, DSPDif(mn,min,mx):29,28,369
 PPS(min,max,std): 23,36,2.33
 Prof: 583 to 113176, NumProf(t/r): 112593/34138
 ProcTime/Recs: 21:27:27-21:44:04/68276-102413
 MxAcQtime: 33ms; DRate: 191.7KB/s; Flags: 0, 0, 0
 Pulse: 275ns, IFfilt: 5.0MHz; ppPol: HH HV VV
 TxPol: HHVV, PRF: 20 10 20 10 kHz
 Range: Delay 75m, Spacing 30m, Gates 100
 Ave. Pulses: 84, Rng/Prof Aspect@90m/s: 11.4

	Min	Max	Mean	Std	Varc%
hhN(dB)	-68.60	-64.46	-66.60	-76.54	10.1
vvN(dB)	-69.04	-63.58	-67.12	-76.49	11.6
hhL(dB)	-19.78	-7.92	-10.21	-17.37	19.2
vvL(dB)	-13.27	-3.26	-7.27	-13.63	23.1
ppN(m/s)	-12.50	12.56	0.09	4.14	
ppT(m/s)	-98.73	99.24	0.75	32.69	
hh/vv(dB)	-NaN	96.61	49.82	74.44	2899
vh/hh(dB)	-NaN	-26.47	-50.17	-42.06	647.
hv/vv(dB)	-NaN	-34.90	-53.10	-47.20	389.
hnjmp(dB)	-2.28	2.68	0.17	-8.35	14.1
vnjmp(dB)	-2.49	2.58	0.19	-8.25	14.3